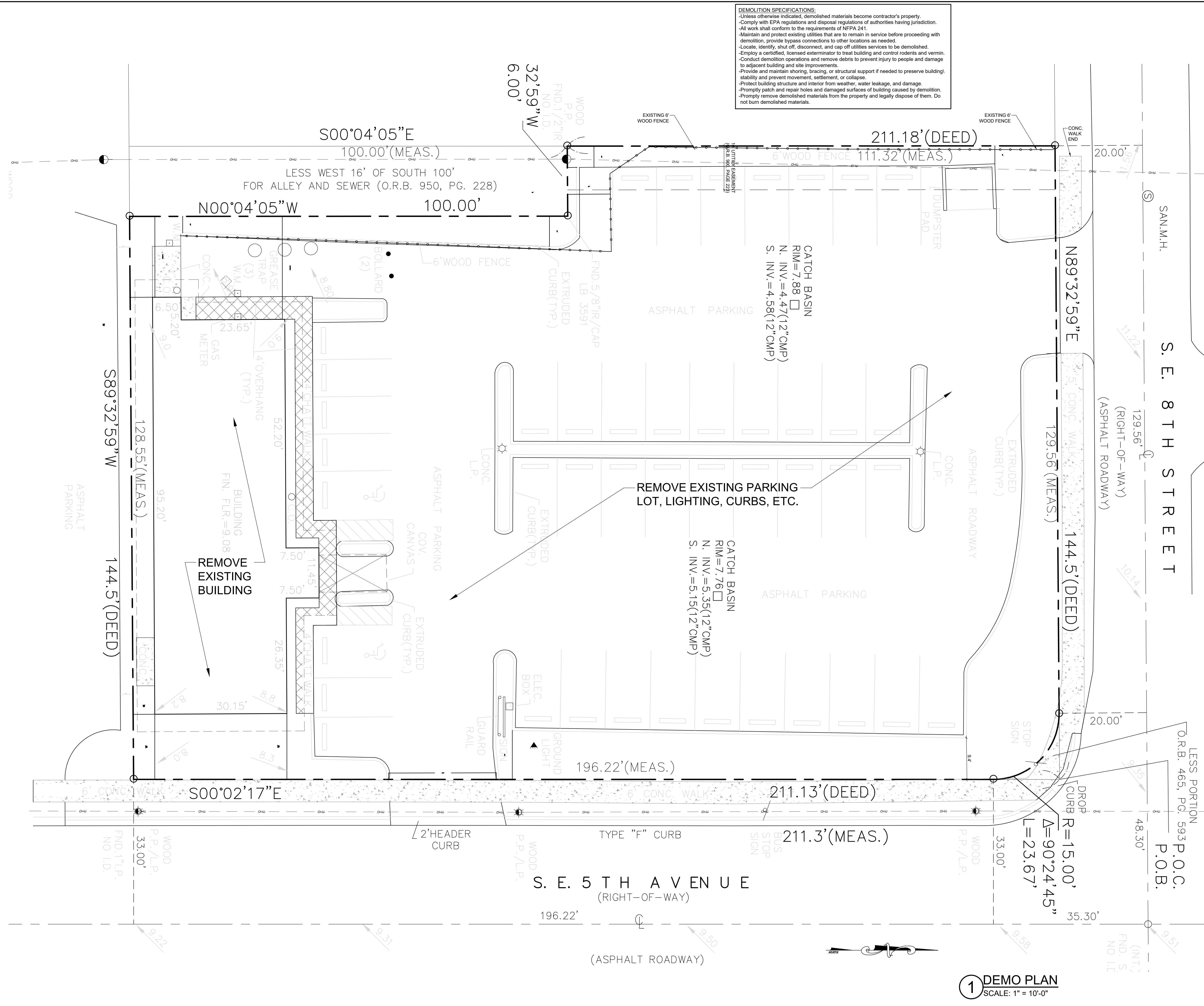
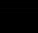


DELRAY DERMATOLOGY
802 SE 5th Avenue
DELRAY BEACH, FL

Job No. 2404036

FL-00010035 FIRM-AA003379

ALL DESIGN CORRECTIONS & PLANS INDICATED OR REFERENCED BY THIS DRAWING ARE OWNED BY, & THE PROPERTY OF, THE OFFICE & FIRM CREATING SAME, & DEVELOPED FOR USE IN A CONNECTION WITH THE SPECIFIED PROJECT. NONE OF SUCH DESIGN ARRANGEMENTS OR PLANS SHALL BE USED BY OR DISCLOSED TO ANY PERSON, FIRM OR CORPORATION FOR ANY PURPOSE WITHOUT THE WRITTEN PERMISSION OF RANDALL & ASSOCIATES. RANDALL & ASSOCIATES, BY WRITING PERMISSIONS ON THESE DRAWINGS, SHALL HAVE PRECEDENCE OVER SCALE DIMENSIONS, CONTRACTORS' VARIATIONS & BE RESPONSIBLE FOR ANY DIMENSIONS & CONDITIONS ON THE DRAWING. CONTRACTOR MUST BE NOTIFIED OF ANY VARIATION FROM THE DIMENSIONS AND CONDITIONS SHOWN BY THIS DRAWING. (FOR DETAILS OF APPROVAL, BEFORE PROCEEDING WITH FABRICATION ON ITEMS NOT NOTED THEREON, ALL RIGHTS RESERVED. RANDALL STOFF ASSOCIATES P.A.



300 SERIES KEYNOTES

- 300 - WOOD FASCIA FINISH
301 - SMOOTH STUCCO FINISH
302 - STONE WALL CLADDING
303 - WOOD WALL CLADDING
304 - CONCRETE EYEBROW
305 - ALUMINUM BAHAMA SHUTTER
306 - ALUMINUM FALSE LOUVERED PANELS
307 - 6" SCALLOPED WALL EDGE
308 - WOOD OUTRIGGERS
309 - 7" RAISED STUCCO SILL
310 - GLASS RAIL w/ WOOD CAP
311 - ROLLING ALUMINUM GATE
312 - 1 1/2" STUCCO REGLET
313 - EXIT DOOR CLAD TO MATCH
314 - STONE WALL BASE
315 - LOUVERED ALUMINUM PANEL
316 - 6" ROLLING ALUMINUM GATES (BRONZE) TO
CLOSE OFF PARKING LOT AFTER HOURS
317 - 6" RAISED SMOOTH STUCCO BAND
318 - 12" RAISED SMOOTH STUCCO HEADER
319 - SLOPE PARAPET w/ ROOF
320 - FLAT CEMENT ROOF TILE (WHITE)

6-4-2025

REVISIONS	BY	DATE
1. B.O.	GS	4.9.2024
1st SPRAB comments	GS	12.23.2024
2nd SPRAB comments	GS	2.28.2025
3rd SPRAB comments	GS	5.27.2025

DELRAY DERMATOLOGY
802 SE 5th Avenue
DELRAY BEACH, FL

Site Plan Review Set
File No. 2024-254

RANDALL STOFFT
ARCHITECTS
distinctive. inspirational. architecture.

Job No. 2404036

FL-001105 FIRM-AA0003379

ALL DESIGN, CONSTRUCTION, AND FINISHES INDICATED ON THESE DRAWINGS ARE THE PROPERTY OF RANDALL E. STOFFT, ARCHITECTS, P.A. UNLESS OTHERWISE NOTED. CONTRACTORS SHALL VERIFY & BE RESPONSIBLE FOR ALL CONDITIONS, CONDITIONS OF USE, AND A TRUE PRICE THAT BE WITHIN OF ANY JURISDICTION. THE CONTRACTOR SHALL BE RESPONSIBLE FOR VERIFYING THE CONDITIONS AND APPROVALS BEFORE PROCEEDING WITH FABRICATION ON ITEMS SO NOTED. FURTHER, ALL RIGHTS RESERVED RANDALL E. STOFFT, ARCHITECTS, P.A.

A301



6-4-2025

REVISIONS	BY	DATE
△ I.B.O.	GS	4.9.2024
△ 1st SPRAB comments	GS	12.23.2024
△ 2nd SPRAB comments	GS	2.28.2025
△ 3rd SPRAB comments	GS	5.27.2025

DELRAY DERMATOLOGY
802 SE 5th Avenue
DELRAY BEACH, FL

Site Plan Review Set
File No. 2024-254

RANDALL STOFFT
ARCHITECTS
distinctive. inspirational. architecture.

42 N SWINTON AVE, DELRAY BEACH, FL 33444 (561) 244-0099 NAPLES, FL (239) 362-7677 WWW.STOFFT.COM

Job No. 2404036

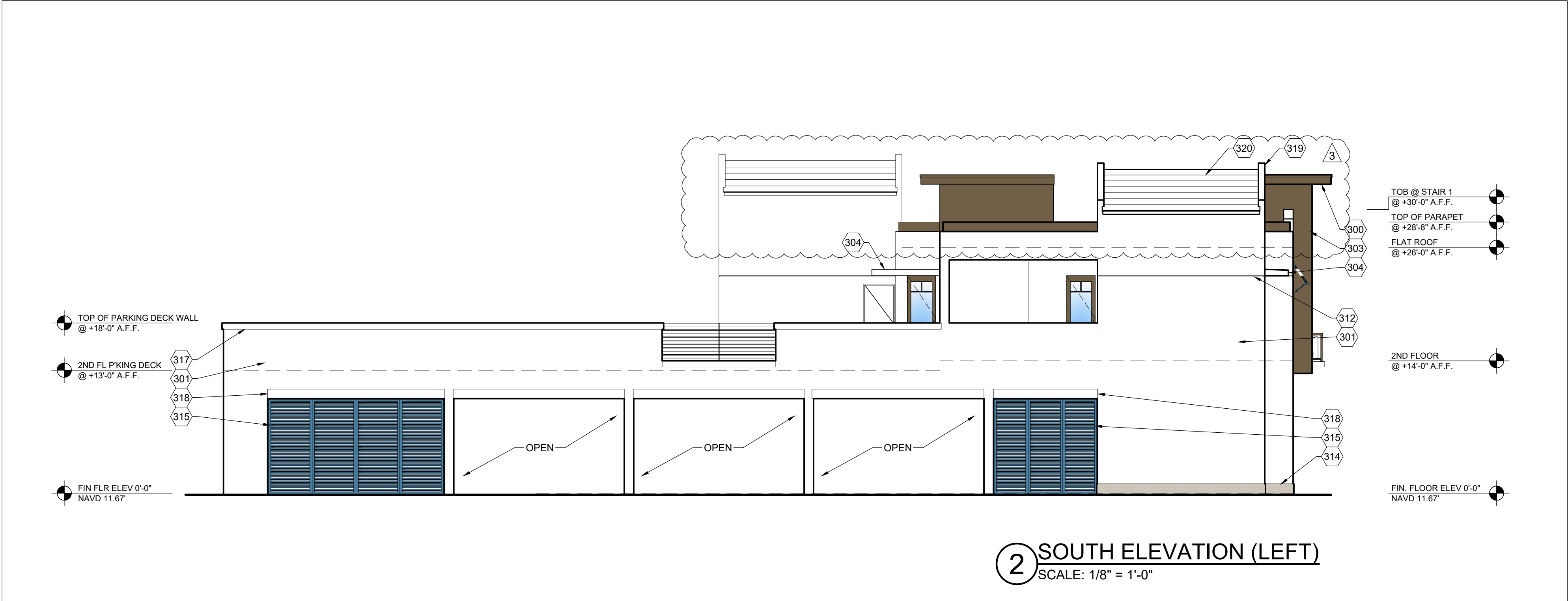
FL-001105 FIRM-AA003379

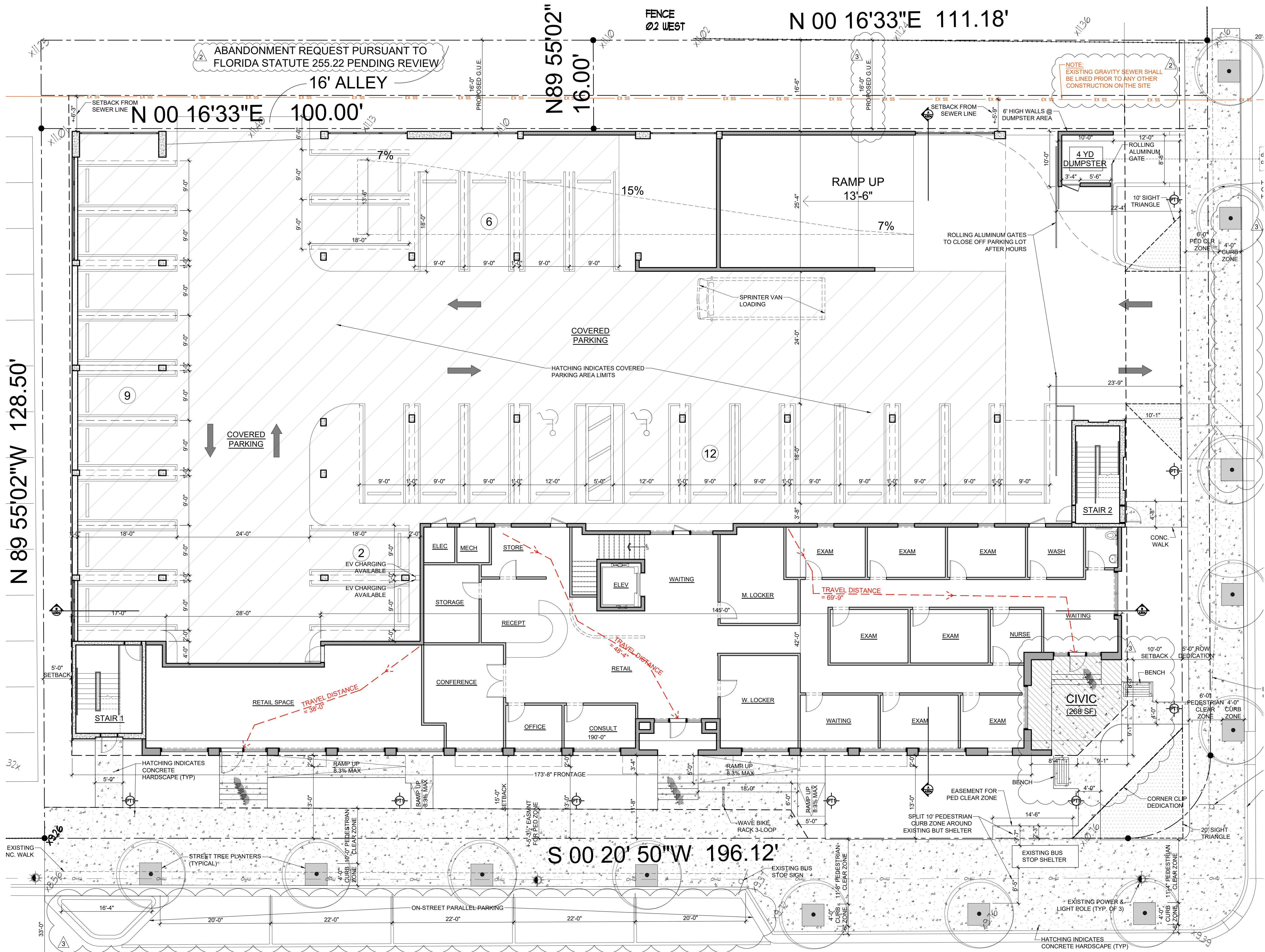
ALL DESIGN, CONSTRUCTION, AND FINISHES INDICATED ON THESE DRAWINGS ARE THE PROPERTY OF RANDALL STOFFT ARCHITECTS, P.A. NO PART OF THESE DRAWINGS SHALL BE REPRODUCED OR TRANSMITTED IN ANY FORM OR BY ANY MEANS, ELECTRONIC OR MECHANICAL, INCLUDING PHOTOCOPYING, RECORDING, OR BY ANY INFORMATION STORAGE AND RETRIEVAL SYSTEM, WITHOUT THE WRITTEN PERMISSION OF RANDALL STOFFT ARCHITECTS, P.A. CONTRACTORS SHALL VERIFY ALL DIMENSIONS AND CONDITIONS ON THE JOB. A TRUE PRICE MAY BE OFFERED BY ANY CONTRACTOR THAT DIFFERS FROM THE CONDITIONS SHOWN BY THESE DRAWINGS, SUCH DETAILS OF CONSTRUCTION SHALL BE THE RESPONSIBILITY OF THE CONTRACTOR. APPROVAL BEFORE PROCEEDING WITH FABRICATION ON THESE DRAWINGS IS REQUIRED. ALL RIGHTS RESERVED RANDALL STOFFT ARCHITECTS, P.A.

A302

300 SERIES KEYNOTES

- 300 - WOOD FASCIA FINISH
- 301 - SMOOTH STUCCO FINISH
- 302 - STONE WALL CLADDING
- 303 - WOOD WALL CLADDING
- 304 - CONCRETE EYEBROW
- 305 - ALUMINUM BAHAMA SHUTTER
- 306 - ALUMINUM FALSE LOUVERED PANELS
- 307 - 6" SCALLOPED WALL EDGE
- 308 - WOOD OUTRIGGERS
- 309 - 7" RAISED STUCCO SILL
- 310 - GLASS RAIL w/ WOOD CAP
- 311 - ROLLING ALUMINUM GATE
- 312 - 1 1/2" STUCCO REGLET
- 313 - EXIT DOOR CLAD TO MATCH
- 314 - STONE WALL BASE
- 315 - LOUVERED ALUMINUM PANEL
- 316 - 6" ROLLING ALUMINUM GATES (BRONZE) TO CLOSE OFF PARKING LOT AFTER HOURS
- 317 - 8" RAISED SMOOTH STUCCO BAND
- 318 - 12" RAISED SMOOTH STUCCO HEADER
- 319 - SLOPE PARAPET w/ ROOF
- 320 - FLAT CEMENT ROOF TILE (WHITE)





1 1ST FLOOR PLAN
SCALE: 1/8" = 1'-0"

REVISIONS	BY	DATE
1. B.O.	GS	4.9.2024
1st SPRAB comments	GS	12.23.2024
2nd SPRAB comments	GS	2.28.2025
3rd SPRAB comments	GS	5.27.2025

6-4-2025

DELRAY DERMATOLOGY
802 SE 5th Avenue
DELRAY BEACH, FL

Site Plan Review Set
File No. 2024-254

RANDALL STOFFT
ARCHITECTS
distinctive. inspirational. architecture.

42 N SWINTON AVE, DELRAY BEACH, FL 33444 (561) 248-0799 NARLES, FL (239) 362-7677 WWW.STOFFT.COM

Job No. 2404036

FL-001105 FIRM-AA003379

A201

	REVISIONS	BY	DATE
1	I.B.O.	GS	4.9.2024
2	1st SPRAB comments	GS	12.23.2024
3	2nd SPRAB comments	GS	2.28.2025
4	3rd SPRAB comments	GS	5.27.2025

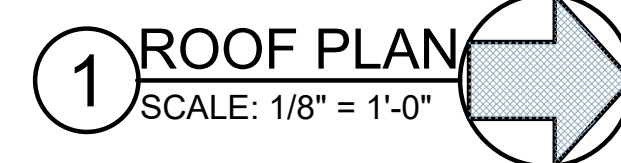
Site Plan Review Set
File No. 2024-254

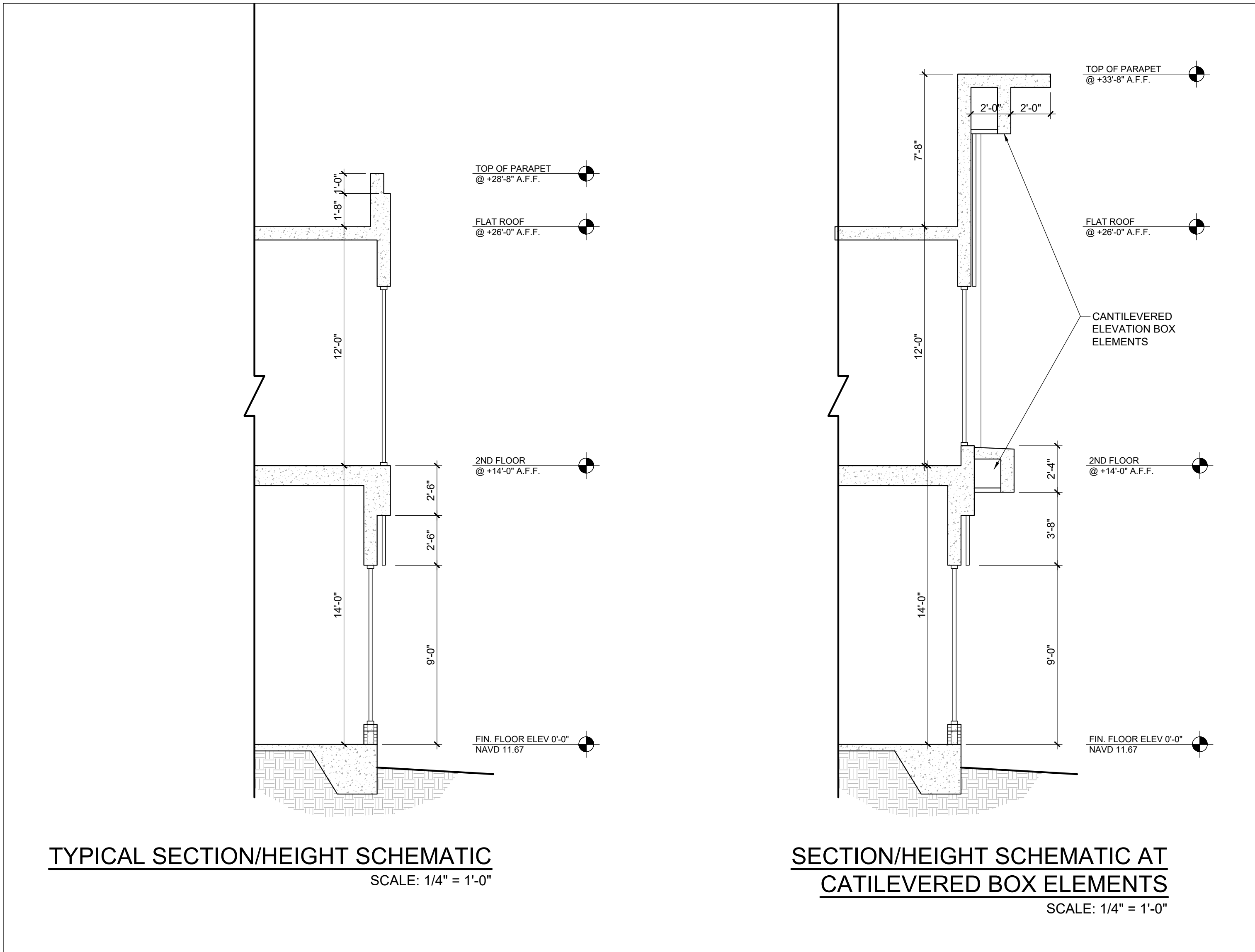
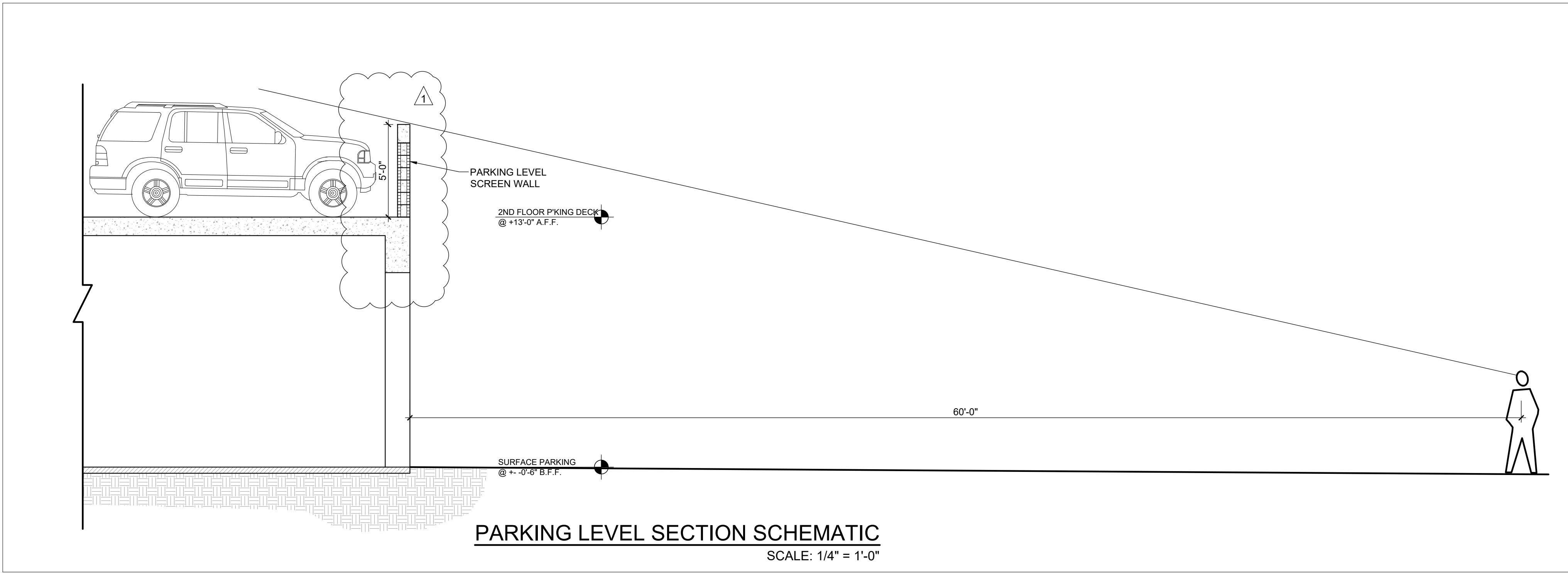
42 N SWINTON AVE, DELRAY BEACH, FL 33444 (561) 243-0799 NAPLES, FL (239) 262-7677 WWW.STOFFT.COM

FL-0011105 FIRM-AA003379

ALL IDEAS, DESIGNS, ARRANGEMENTS, & PLANS INDICATED OR REPRESENTED BY THIS DRAWING ARE OWNED BY: A. THE PROPERTY OF RANDALL L. STOFF, ARCHITECT, 10000 W. 10TH AVE. HOWE, CO. IN A CONNECTION WITH THE SPECIFIED PROJECT; NONE OF SUCH IDEAS, DESIGNS, ARRANGEMENTS, OR PLANS SHALL BE USED, OR DISCLOSED TO ANY PERSON, FIRM, OR CORPORATION FOR ANY PURPOSE, WITHOUT THE WRITTEN PERMISSION OF RANDALL L. STOFF, ARCHITECT, P.A. ANY REVISIONS ON THESE DRAWINGS SHALL HAVE PRECEDENCE OVER SCALE DIMENSIONS. CONTRACTORS SHALL VERIFY & BE RESPONSIBLE FOR ALL DIMENSIONS & CONDITIONS ON THE JOB. & THIS OFFICE MUST BE NOTIFIED IN WRITING OF ANY DISCREPANCIES. ALL DIMENSIONS & CONDITIONS SHOWN BY THESE DRAWINGS, SHOW DETAILS OF ADEQUATE SCALE MUST BE SUBMITTED TO THIS OFFICE FOR APPROVAL BEFORE PROCEEDING WITH FABRICATION ON ITEMS SO NOTED. ©2004, ALL RIGHTS RESERVED RANDALL STOFF ARCHITECT P.A.

(A211)





3-24-2025

REVISIONS	BY	DATE
△ I.B.O.	GS	4.9.2024
△ 1st SPRAB comments	GS	12.23.2024
△ 2nd SPRAB comments	GS	2.28.2025

DELRAY DERMATOLOGY

802 SE 5th Avenue

DELRAY BEACH, FL

Site Plan Review Set

File No. 2024-254

RANDALL STOFFT

ARCHITECTS

distinctive. inspirational. architecture.

42 N SWINTON AVE, DELRAY BEACH, FL 33444 (561) 245-0799 NAPLES, FL (239) 382-7677 WWW.STOFFT.COM

Job No. 2404036

FL-001105 FIRM-AA003379

ALL DESIGN, CONSTRUCTION, AND PLANS INDICATED ON THESE DRAWINGS ARE THE PROPERTY OF RANDALL STOFFT ARCHITECTS, P.A. AND SHALL REMAIN THE PROPERTY OF RANDALL STOFFT ARCHITECTS, P.A. NO PART OF THESE DRAWINGS SHALL BE REPRODUCED OR TRANSMITTED IN ANY FORM OR BY ANY MEANS, ELECTRONIC OR MECHANICAL, INCLUDING PHOTOCOPYING, RECORDING, OR BY ANY INFORMATION STORAGE AND RETRIEVAL SYSTEM, WITHOUT THE WRITTEN PERMISSION OF RANDALL STOFFT ARCHITECTS, P.A. CONTRACTORS SHALL VERIFY ALL DIMENSIONS AND CONDITIONS ON THE JOB. A FIRM OFFICE MAY BE NOTIFIED OF ANY VIOLATIONS OF THE DIMENSIONS AND CONDITIONS SHOWN BY THESE DRAWINGS, SUCH DETAILS OF APPROVALS SHALL BE SUBMITTED TO THE OFFICE FOR APPROVAL BEFORE PROCEEDING WITH FABRICATION ON THE JOB. NOTED: (NOTE) ALL RIGHTS RESERVED RANDALL STOFFT ARCHITECTS, P.A.

6-4-2025

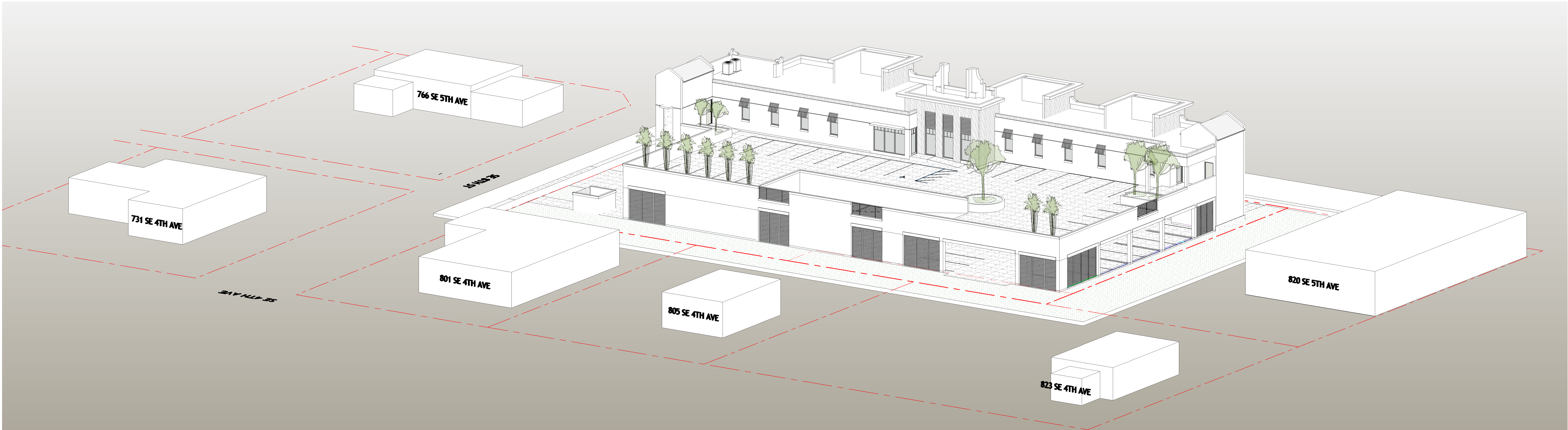
Site Plan Review Set
File No. 2024-254

Job No. 2404036

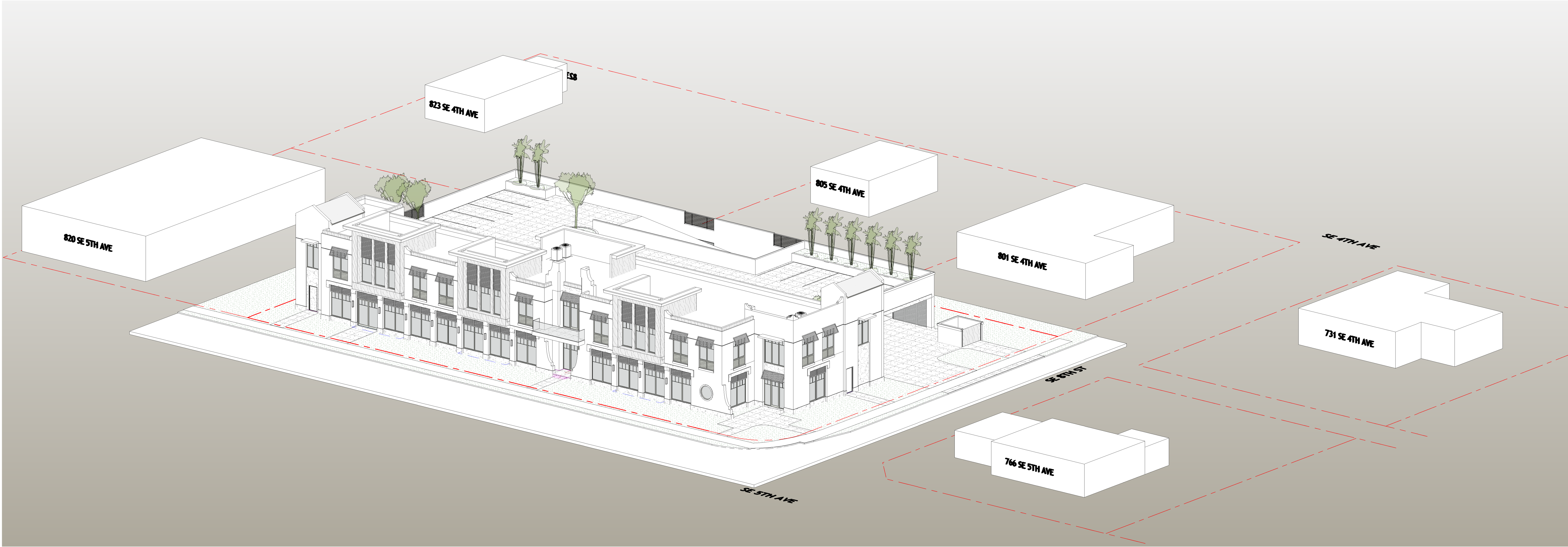
ALL IDEAS, DESIGNS, ARRANGEMENTS, I PLAN INDICATED OR REPRESENTED IN THIS DRAWING ARE OWNED BY & THE PROPERTY OF THIS OFFICE. I HEREBY CREATED, EVOLVED, & DEVELOPED FOR USE ON A CONNECTION WITH THE SPECIFIED PROJECT, NONE OF SUCH IDEAS, DESIGNS, ARRANGEMENTS, OR PLANS SHALL BE USED BY OR DISCLOSED TO ANY PERSON OR ENTITY WITHOUT THE WRITTEN PERMISSION OF RANDALL E. SIOFFIT, ARCHITECTS. PL WRITTEN DIMENSIONS ON THESE DRAWINGS SHALL HAVE PRECEDENCE OVER SCALE DIMENSIONS. CONFORMERS SHALL VERIFY & BE RESPONSIBLE FOR ALL DIMENSIONS. VARIATIONS FROM THESE DIMENSIONS MUST BE NOTICED AT ANY CONDITIONS IN THESE DRAWINGS. SHOW DETAILS OF ADEQUATE SCALE MUST BE SUBMITTED TO THIS OFFICE FOR APPROVAL BEFORE PROCEEDING WITH CONSTRUCTION. ITEMS 80, 81, 82, 83, 84, 85, 86, 87, 88, 89, 90, 91, 92, 93, 94, 95, 96, 97, 98, 99, 100, 101, 102, 103, 104, 105, 106, 107, 108, 109, 110, 111, 112, 113, 114, 115, 116, 117, 118, 119, 120, 121, 122, 123, 124, 125, 126, 127, 128, 129, 130, 131, 132, 133, 134, 135, 136, 137, 138, 139, 140, 141, 142, 143, 144, 145, 146, 147, 148, 149, 150, 151, 152, 153, 154, 155, 156, 157, 158, 159, 160, 161, 162, 163, 164, 165, 166, 167, 168, 169, 170, 171, 172, 173, 174, 175, 176, 177, 178, 179, 180, 181, 182, 183, 184, 185, 186, 187, 188, 189, 190, 191, 192, 193, 194, 195, 196, 197, 198, 199, 200, 201, 202, 203, 204, 205, 206, 207, 208, 209, 210, 211, 212, 213, 214, 215, 216, 217, 218, 219, 220, 221, 222, 223, 224, 225, 226, 227, 228, 229, 230, 231, 232, 233, 234, 235, 236, 237, 238, 239, 240, 241, 242, 243, 244, 245, 246, 247, 248, 249, 250, 251, 252, 253, 254, 255, 256, 257, 258, 259, 260, 261, 262, 263, 264, 265, 266, 267, 268, 269, 270, 271, 272, 273, 274, 275, 276, 277, 278, 279, 280, 281, 282, 283, 284, 285, 286, 287, 288, 289, 290, 291, 292, 293, 294, 295, 296, 297, 298, 299, 300, 301, 302, 303, 304, 305, 306, 307, 308, 309, 310, 311, 312, 313, 314, 315, 316, 317, 318, 319, 320, 321, 322, 323, 324, 325, 326, 327, 328, 329, 330, 331, 332, 333, 334, 335, 336, 337, 338, 339, 340, 341, 342, 343, 344, 345, 346, 347, 348, 349, 350, 351, 352, 353, 354, 355, 356, 357, 358, 359, 360, 361, 362, 363, 364, 365, 366, 367, 368, 369, 370, 371, 372, 373, 374, 375, 376, 377, 378, 379, 380, 381, 382, 383, 384, 385, 386, 387, 388, 389, 390, 391, 392, 393, 394, 395, 396, 397, 398, 399, 400, 401, 402, 403, 404, 405, 406, 407, 408, 409, 410, 411, 412, 413, 414, 415, 416, 417, 418, 419, 420, 421, 422, 423, 424, 425, 426, 427, 428, 429, 430, 431, 432, 433, 434, 435, 436, 437, 438, 439, 440, 441, 442, 443, 444, 445, 446, 447, 448, 449, 450, 451, 452, 453, 454, 455, 456, 457, 458, 459, 460, 461, 462, 463, 464, 465, 466, 467, 468, 469, 470, 471, 472, 473, 474, 475, 476, 477, 478, 479, 480, 481, 482, 483, 484, 485, 486, 487, 488, 489, 490, 491, 492, 493, 494, 495, 496, 497, 498, 499, 500, 501, 502, 503, 504, 505, 506, 507, 508, 509, 510, 511, 512, 513, 514, 515, 516, 517, 518, 519, 520, 521, 522, 523, 524, 525, 526, 527, 528, 529, 530, 531, 532, 533, 534, 535, 536, 537, 538, 539, 540, 541, 542, 543, 544, 545, 546, 547, 548, 549, 550, 551, 552, 553, 554, 555, 556, 557, 558, 559, 560, 561, 562, 563, 564, 565, 566, 567, 568, 569, 570, 571, 572, 573, 574, 575, 576, 577, 578, 579, 580, 581, 582, 583, 584, 585, 586, 587, 588, 589, 590, 591, 592, 593, 594, 595, 596, 597, 598, 599, 600, 601, 602, 603, 604, 605, 606, 607, 608, 609, 610, 611, 612, 613, 614, 615, 616, 617, 618, 619, 620, 621, 622, 623, 624, 625, 626, 627, 628, 629, 630, 631, 632, 633, 634, 635, 636, 637, 638, 639, 640, 641, 642, 643, 644, 645, 646, 647, 648, 649, 650, 651, 652, 653, 654, 655, 656, 657, 658, 659, 660, 661, 662, 663, 664, 665, 666, 667, 668, 669, 670, 671, 672, 673, 674, 675, 676, 677, 678, 679, 680, 681, 682, 683, 684, 685, 686, 687, 688, 689, 690, 691, 692, 693, 694, 695, 696, 697, 698, 699, 700, 701, 702, 703, 704, 705, 706, 707, 708, 709, 710, 711, 712, 713, 714, 715, 716, 717, 718, 719, 720, 721, 722, 723, 724, 725, 726, 727, 728, 729, 730, 731, 732, 733, 734, 735, 736, 737, 738, 739, 740, 741, 742, 743, 744, 745, 746, 747, 748, 749, 750, 751, 752, 753, 754, 755, 756, 757, 758, 759, 760, 761, 762, 763, 764, 765, 766, 767, 768, 769, 770, 771, 772, 773, 774, 775, 776, 777, 778, 779, 780, 781, 782, 783, 784, 785, 786, 787, 788, 789, 790, 791, 792, 793, 794, 795, 796, 797, 798, 799, 800, 801, 802, 803, 804, 805, 806, 807, 808, 809, 810, 811, 812, 813, 814, 815, 816, 817, 818, 819, 820, 821, 822, 823, 824, 825, 826, 827, 828, 829, 830, 831, 832, 833, 834, 835, 836, 837, 838, 839, 840, 841, 842, 843, 844, 845, 846, 847, 848, 849, 850, 851, 852, 853, 854, 855, 856, 857, 858, 859, 860, 861, 86

A304





2 SW View



1 NE View

REVISIONS

2	2nd Sprink Comments	2.28.2025
---	---------------------	-----------

DELRAY DERMATOLOGY

802 SE 5th Avenue

DELRAY BEACH, FL

Site Plan Review Set

File No. 2024-254

RANDALL STOFFT

ARCHITECTS

distinctive. inspirational. architecture.

42 N SWINTON AVE, DELRAY BEACH, FL 33444 (561) 243-0799 NAPLES, FL (239) 262-7677 WWW.STOFFT.COM

2404036

FL-0011105 FIRM-AA003379

ALL IDEAS, DESIGN, ARRANGEMENTS & PLANS INDICATED OR REPRESENTED BY THIS DRAWING ARE OWNED BY A THE PROPERTY OF THE OFFICE & ARE NOT TO BE USED, REPRODUCED OR FOR ANY OTHER PURPOSES WITHOUT THE WRITTEN PERMISSION OF RANDALL STOFFT ARCHITECTS, P.A. ANY REUSE OR MODIFICATION OF THESE DRAWINGS WITHOUT THE WRITTEN PERMISSION OF RANDALL STOFFT ARCHITECTS, P.A. IS STRICTLY PROHIBITED. RANDALL STOFFT ARCHITECTS, P.A. AND ITS AFFILIATES SHALL BE RESPONSIBLE FOR ALL VIOLATIONS OF THESE TERMS. RANDALL STOFFT ARCHITECTS, P.A. AND ITS AFFILIATES SHALL BE RESPONSIBLE FOR ALL VIOLATIONS OF THESE TERMS. RANDALL STOFFT ARCHITECTS, P.A. AND ITS AFFILIATES SHALL BE RESPONSIBLE FOR ALL VIOLATIONS OF THESE TERMS.

A306

6/5/2025 12:26:15 PM

3-24-2025

REVISIONS	BY	DATE
△ I.B.O.	GS	4.9.2024
△ 1st SPRAB comments	GS	12.23.2024
△ 2nd SPRAB comments	GS	2.28.2025

DELRAY DERMATOLOGY
802 SE 5th Avenue
DELRAY BEACH, FL

Site Plan Review Set
File No. 2024-254

RANDALL STOFFT
ARCHITECTS
distinctive. inspirational. architecture.

42 N SWINTON AVE, DELRAY BEACH, FL 33444 (561) 245-0799 NAPERES, FL (239) 382-7677 WWW.STOFFT.COM

Job No. 2404036

FL-001105 FIRM-AA003379

ALL DESIGN, DESIGN, ARRANGEMENTS, & PLANS INDICATED OR REPRESENTED BY THIS DRAWING ARE OWNED BY, & ARE THE PROPERTY OF THIS OFFICE. THESE DRAWINGS ARE NOT TO BE REPRODUCED, COPIED, OR IN CONNECTION WITH THE SPECIFIED PROJECT, NONE OF SUCH. NO OTHER ARRANGEMENTS OR PLANS SHALL BE MADE BY OR DISCLOSED TO ANY PERSON FIRM OR CORPORATION FOR ANY PURPOSES WITHOUT THE WRITTEN PERMISSION OF RANDALL E. STOFFT, ARCHITECTS, P.A. UNLESS OTHERWISE NOTED. CONTRACTORS SHALL VERIFY & BE RESPONSIBLE FOR ALL CONDITIONS & CONDITIONS ON THE JOB. A FIRM OFFICE MUST BE NOTIFIED OF ANY VIOLATION THAT THE CONTRACTOR AND ASSOCIATE SCALE MAY BE LIMITED TO THE OFFICE FOR APPROVAL BEFORE PROCEEDING WITH FABRICATION ON ITEMS SO NOTED. (NOTE: ALL RIGHTS RESERVED RANDALL, STOFFT, ARCHITECTS P.A.)

A305

