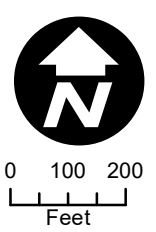
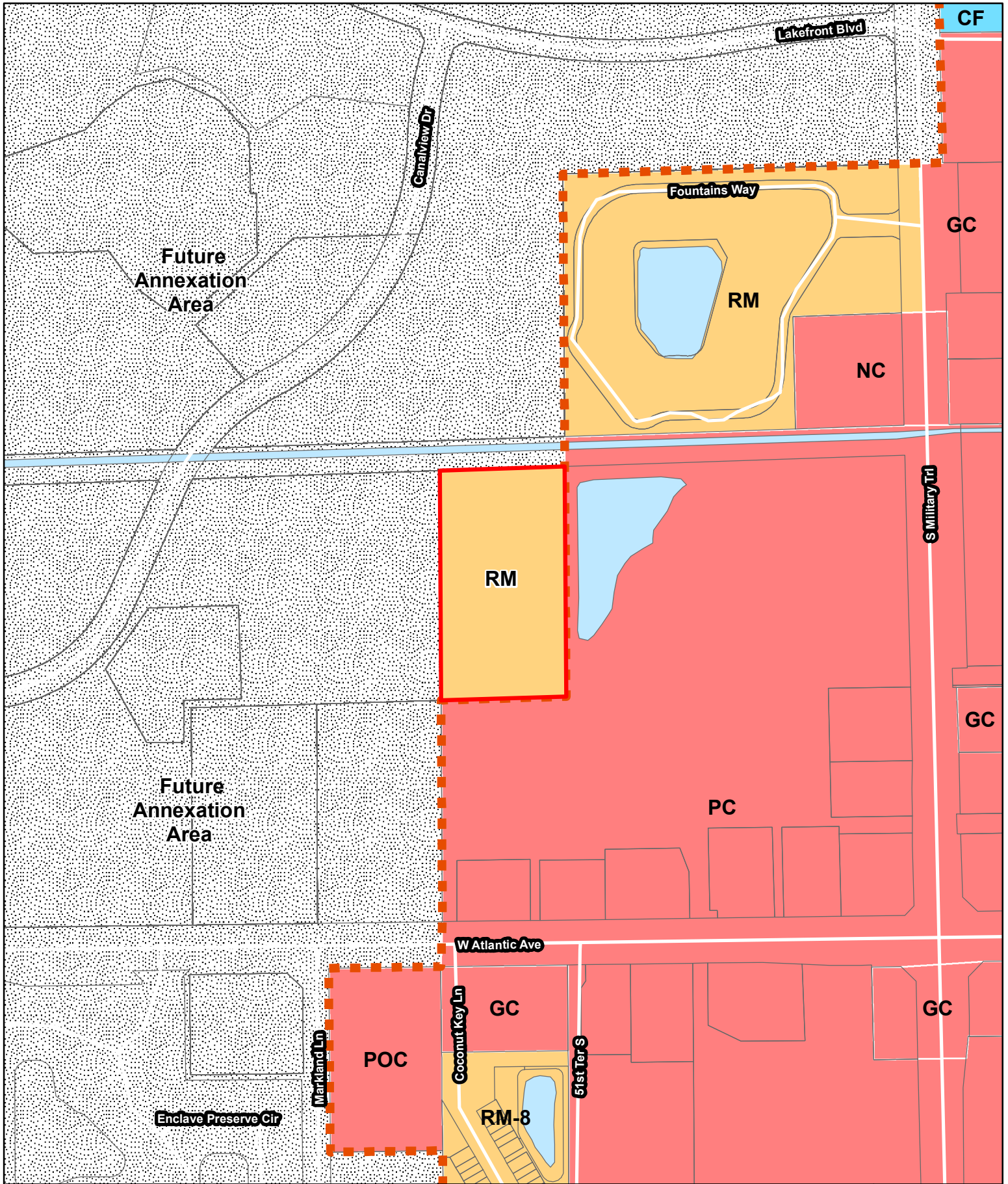








Existing Zoning

- Subject Property
 - Municipal City Limits
 - Future Annexation
 - Commercial
 - Institutional
 - Multiple Family Residential
- PBC AR - Palm Beach County Agricultural Residential
 RM and RM-8 - Multiple Family Residential
 CF - Community Facilities
 GC - General Commercial
 NC - Neighborhood Commercial
 PC - Planned Commercial
 POC - Planned Office Center





Proposed Zoning

- | | | | | | |
|---|-----------------------|---|-------------------|--|-----------------------------|
|  | Subject Property |  | Future Annexation |  | Institutional |
|  | Municipal City Limits |  | Commercial |  | Multiple Family Residential |
-
- | | |
|---|------------------------------|
| RM and RM-8 - Multiple Family Residential | NC - Neighborhood Commercial |
| CF - Community Facilities | PC - Planned Commercial |
| GC - General Commercial | POC - Planned Office Center |

