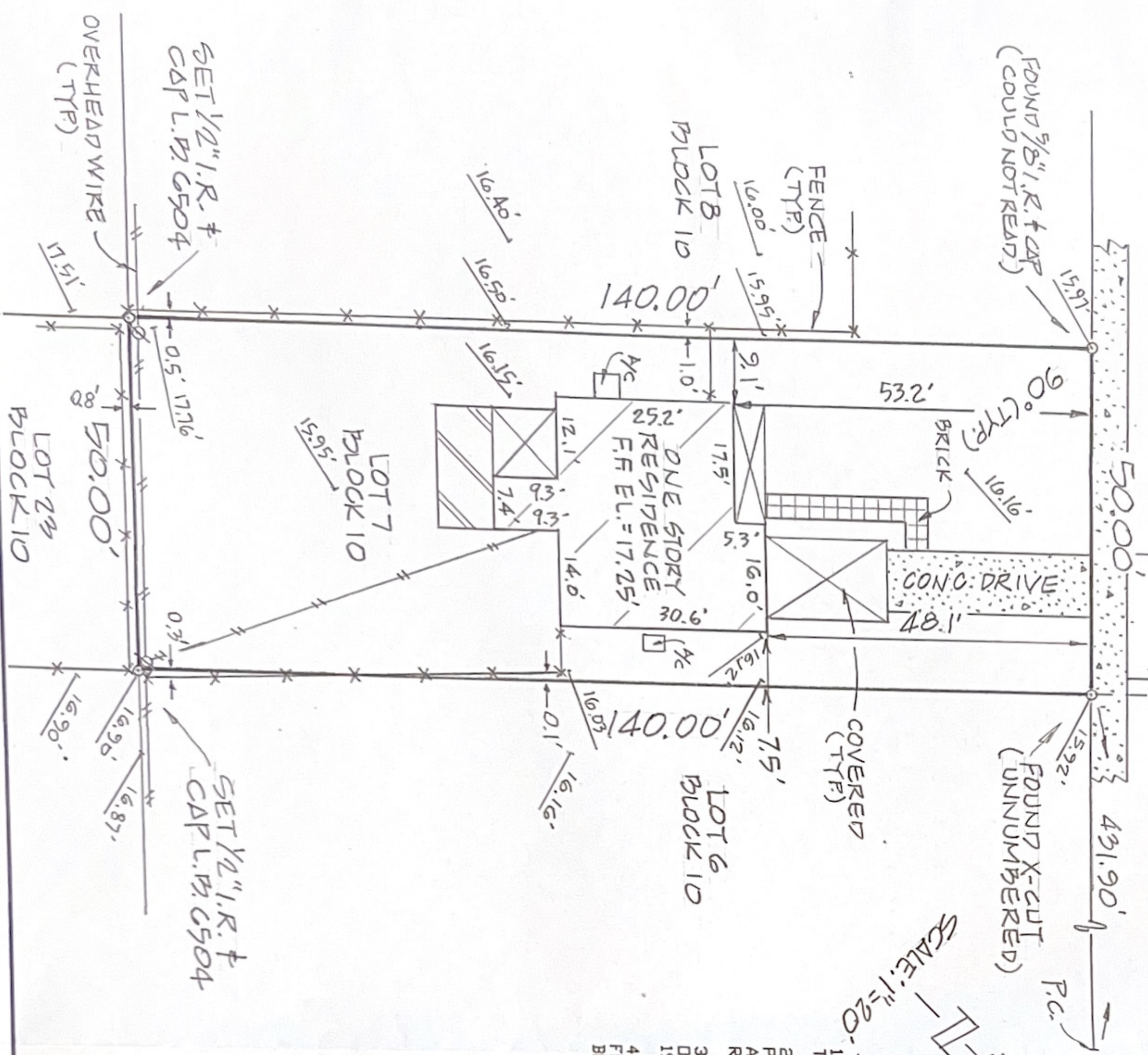


240 N. DIXIE BOULEVARD

DEL-IDA PARK

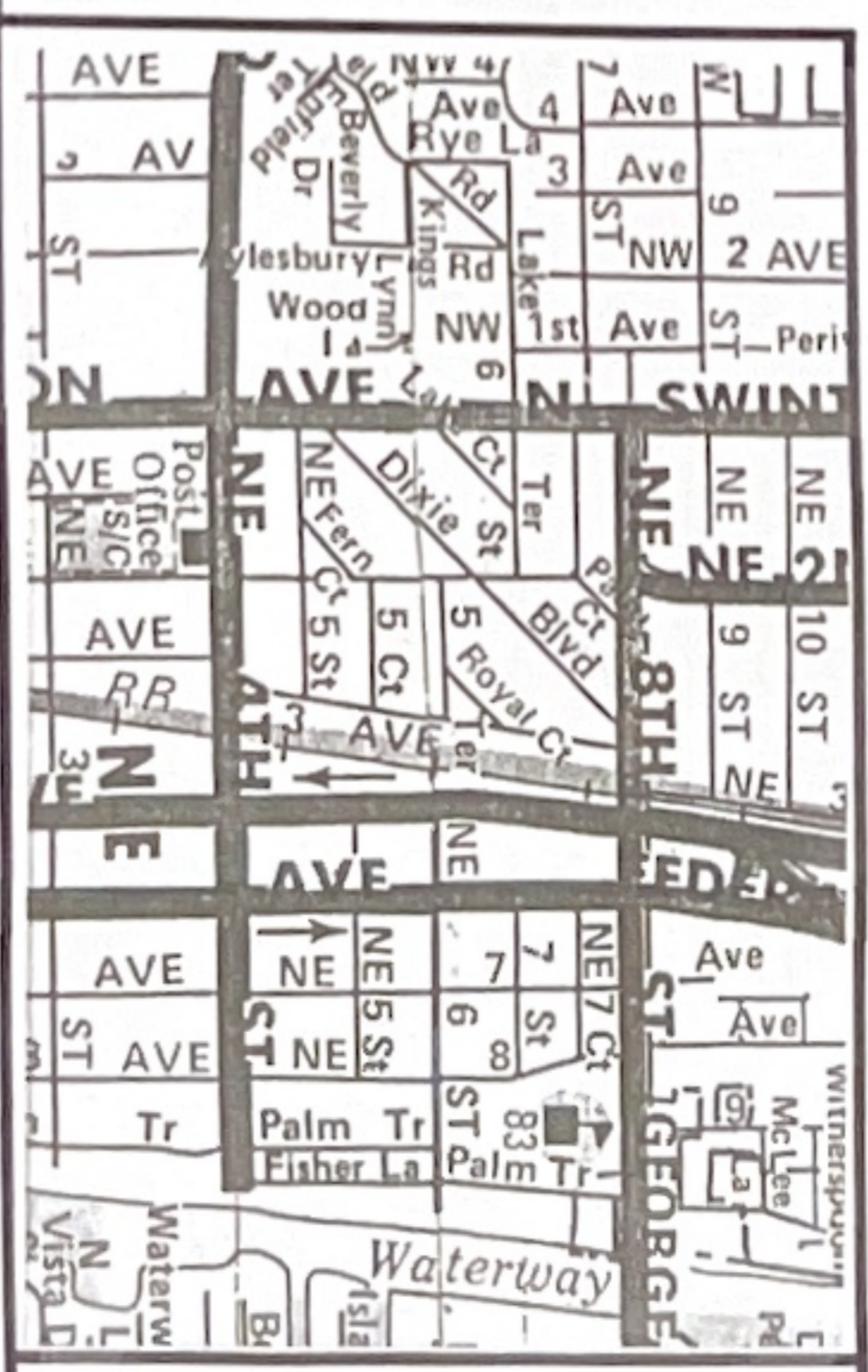
LOT 7, BLOCK 10

According to the plat recorded in Plat Book 9, Page 52, recorded in the public records of Palm Beach County, Florida; said land situate, lying, and being in Palm Beach County, Florida.



SCALE: 1" = 20'

- NOTES:**
- 1) BEARINGS SHOWN HEREON ARE RELIATIVE TO PLAT AND ARE ASSUMED.
 - 2) NO ABSTRACT OR TITLE SEARCH WAS PERFORMED TO DISCOVER THE EXISTENCE OF ANY EASEMENTS OR RESTRICTIONS OF RECORD.
 - 3) ELEVATIONS SHOWN HEREON ARE BASED ON NORTH AMERICA VERTICAL DATUM OF 1988 UNLESS OTHERWISE NOTED.
 - 4) NO BELOW GROUND IMPROVEMENTS, FOOTERS, FOUNDATIONS OR UTILITIES HAVE BEEN LOCATED OR SHOWN ON THIS SURVEY.



NORTH
NOT TO SCALE
VICINITY
MAP

DRB = official record book
 CAS = concrete block structure
 P.C. = point of compound curve
 P.P.C. = permanent control point
 P.I.C. = point of intersection
 P.T. = point of tangency
 D/E = drainage easement
 CAP = corrugated metal pipe
 R.L.S. = registered land surveyor
 L.B. = licensed business

 TRAN = transformer pad
 F.P.A.L. = Florida power and light
 CH = concrete monument
 P.R.C. = point of reverse
 P.I. = point of intersection
 P.T. = point of tangency
 N.F. = not field measured
 V.P.F. = wood privacy fence
 CHATT = chattahoochee
 ELEV = elevation

 P.B. = plat book
 TYP. = typical
 R.V. = right-of-way
 C.A. = central angle
 L.P. = bearing basis line
 ASPH = asphalt
 M.H. = manhole
 U/E = utility easement
 CLF = chain link fence
 P.R.M. = permanent reference monument

 P.G. = page
 I.R. = iron rod
 R = radius
 D = deed
 D/S = offset
 CONC. = concrete
 ESHI. = easement
 CALC. = calculated
 CURV. = curvature

801 S.E. 6th Ave., Suite 203
 Delray Beach, FL 33483
 Phone 561-243-4624
 Fax 243-4869

AUTHORIZATION NUMBER LB6504

I HEREBY CERTIFY THAT THE SKETCH OF BOUNDARY SURVEY SHOWN HEREON MEETS THE STANDARDS OF PRACTICE SET FORTH IN CHAPTER SL-17-050-052, FLORIDA ADMINISTRATIVE CODE PURSUANT TO SECTION 472.027, FLORIDA STATUTES.

HARRY A. BURGESS PLS 8089

CERTIFIED TO: **TIM MCKINNEY SR.**

FLOOD ZONE: "X"

MAP NO: 12099C 0977F
 MAP DATE: 10-5-17
 DATE: 3-28-22
 JOB NO: 03-22-059
 REVISED:

**NOT VALID
UNLESS SEALED
WITH EMBOSSED
SURVEYOR'S SEAL**