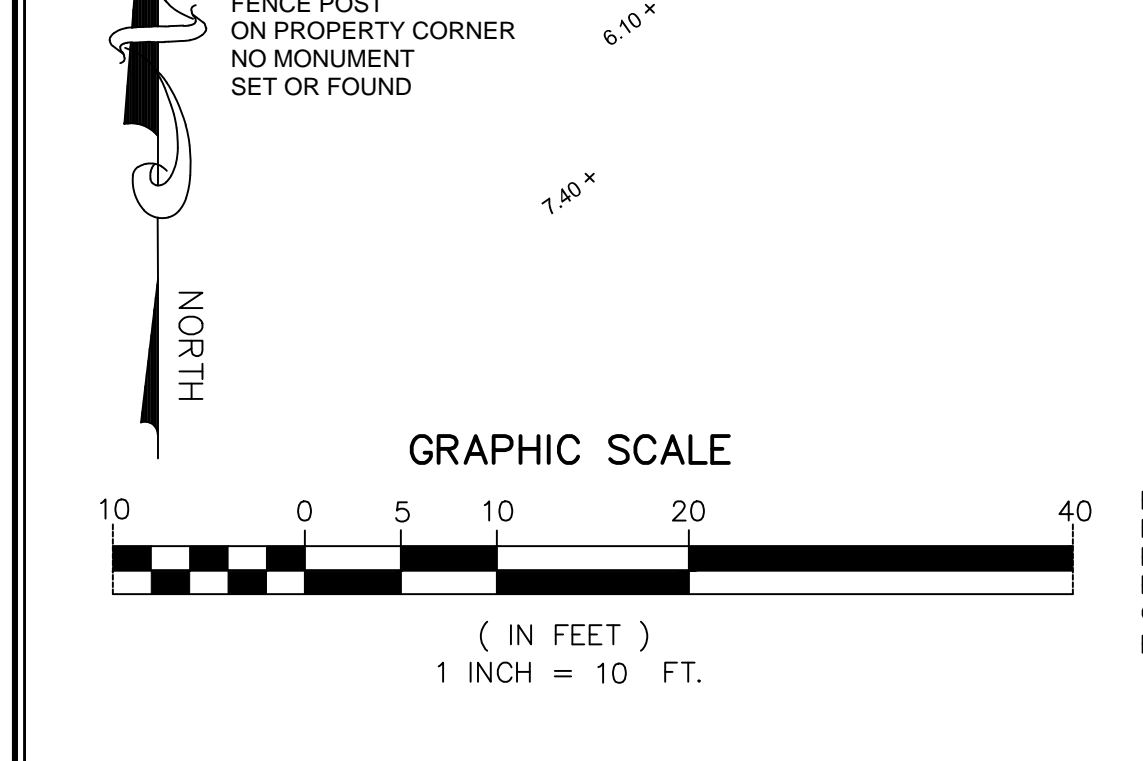


TREE NUMBER	TREE TYPE	DIAMETER (INCHES)	CANOPY (FEET)
1	CABAGGE PALM		12
2	CABAGGE PALM		12
3	PALM		28
4	PALM		25
5	PALM		25
6	PALM		25
7	PALM		23
8	PALM		22
9	CABAGGE PALM		12
10	CABAGGE PALM		12
11	CABAGGE PALM		12
12	COCONUT PLAM		28
13	COCONUT PLAM		30
14	CABAGGE PALM		12
15	MULTI TRUNK PALM		20
16	FISHTAIL PALM		20
17	MULTI TRUNK PALM		20
18	MULTI TRUNK PALM		20
19	PALM		20
20	MULTI TRUNK PALM		20
21	CABAGGE PALM		12
22	CABAGGE PALM		12
23	MULTI TRUNK PALM		12
24	MULTI TRUNK PALM		12
25	PALM		15
26	PALM		15
27	PALM		20
28	MULTI TRUNK PALM		12
29	MULTI TRUNK PALM		12
30	PALM		23
31	MULTI TRUNK PALM		20
32	EXOTIC PALM		12
33	PALM		20
34	PALM		20
35	PALM		20
36	PALM		20
37	CABAGGE PALM		20
38	PALM		30
39	PALM		30
40	PALM		30
41	MULTI TRUNK PALM		20
42	MULTI TRUNK PALM		20
43	MULTI TRUNK PALM		20
44	MULTI TRUNK PALM		20
45	MULTI TRUNK PALM		20
46	MULTI TRUNK PALM		20
47	MULTI TRUNK PALM		20
48	MULTI TRUNK PALM		20
49	MULTI TRUNK PALM		12
50	MULTI TRUNK PALM		12
51	MULTI TRUNK PALM		12
52	EXOTIC SHADE	12	
53	CABAGGE PALM		12
54	CABAGGE PALM		12
55	CABAGGE PALM		12
56	FISHTAIL PALM		20
57	MULTI TRUNK PALM		20
58	MULTI TRUNK PALM		20
59	MULTI TRUNK PALM		20
60	MULTI TRUNK PALM		20
61	MULTI TRUNK PALM		20
62	CABAGGE PALM		24
63	MULTI TRUNK PALM		20
64	MULTI TRUNK PALM		20
65	MULTI TRUNK PALM		20
66	CABAGGE PALM		12
67	MULTI TRUNK PALM		22
68	MULTI TRUNK PALM		24
69	CABAGGE PALM		12
70	MULTI TRUNK PALM		20
71	MULTI TRUNK PALM		20
72	CABAGGE PALM		12
73	MULTI TRUNK PALM		20
74	MULTI TRUNK PALM		20
75	MULTI TRUNK PALM		21
76	MULTI TRUNK PALM		18
77	MULTI TRUNK PALM		20



SCHEDULE B-II EXCEPTIONS
 6. ALL MATTERS CONTAINED ON THE PLAN OF MODEL LAND COMPANY'S SUBDIVISION OF SECTION 9, TOWNSHIP 46 SOUTH, RANGE 43 EAST, AS RECORDED IN PLAT BOOK 8, PAGE 40, PUBLIC RECORDS OF PALM BEACH COUNTY, FLORIDA; (DOES AFFECT. BLANKET IN NATURE. NO EASEMENTS SHOWN ON PLAT. NOT PLOTTED HEREON)

LEGEND

⊙	ANCHOR
⊠	CABLE BOX
⊡	CATCH BASIN
⊕	CLEANOUT
⊖	DRAINAGE MANHOLE
⊗	ELECTRIC BOX
⊘	FIRE HYDRANT
⊙	HANDICAP PARKING
⊚	LIGHT POLE
⊛	POWER POLE
⊜	SANITARY MANHOLE
⊝	SIGN
⊞	VALVE
⊟	WATER METER
—	FOUND
—	FLORIDA POWER & LIGHT
—	PLAT BOOK
—	PAGE
—	OFFICIAL RECORDS BOOK
—	RIGHT-OF-WAY

DESCRIPTION
 NO PLATTED
 ALL OF THAT CERTAIN TRACT OF LAND LOCATED IN DELRAY BEACH, PALM BEACH COUNTY, FLORIDA, DESCRIBED AS FOLLOWS:
 BEGINNING AT A POINT IN THE SOUTH LINE OF THE NORTH ONE-HALF (N 1/2) OF LOTS 28 AND 29 OF MODEL LAND COMPANY'S SUBDIVISION OF SECTION 9, TOWNSHIP 46 SOUTH, RANGE 43 EAST, ACCORDING TO A PLAT ON FILE IN PLAT BOOK 8, PAGE 40, PALM BEACH COUNTY PUBLIC RECORDS, WHICH POINT IS 230.54 FEET WEST OF THE SOUTHEAST CORNER OF SAID LOT 28 AND MEASURED ALONG THE SOUTH LINE OF THE NORTH ONE-HALF (N 1/2) OF SAID LOT 28; THENCE RUN WESTERLY ALONG THE SOUTH LINE OF THE NORTH ONE-HALF (N 1/2) OF SAID LOTS 28 AND 29 A DISTANCE OF 200 FEET; THENCE RUN NORTHERLY ON A LINE PARALLEL TO THE WEST LINE OF SAID LOT 29 A DISTANCE OF 165.14 FEET, MORE OR LESS, TO THE NORTH LINE OF SAID LOT 29; THENCE RUN EASTERLY ALONG THE NORTH LINE OF SAID LOTS 28 AND 29, A DISTANCE OF 200.68 FEET, MORE OR LESS; THENCE RUN SOUTHERLY ALONG A LINE PARALLEL TO THE WEST RIGHT OF WAY LINE OF OCEAN BOULEVARD (STATE ROAD A-1-A), A DISTANCE OF 165.10 FEET, MORE OR LESS, TO THE POINT OF BEGINNING, LESS THE RIGHT-OF-WAY FOR NORTHEAST EIGHTH STREET (GEORGE BUSH BOULEVARD).
 SAID LANDS SITUATE IN THE CITY OF DELRAY BEACH, PALM BEACH COUNTY, FLORIDA AND CONTAINING 27,073 SQUARE FEET, OR 0.622 ACRES, MORE OR LESS.
 SUBJECT TO EASEMENTS, RESTRICTIONS, RESERVATIONS, COVENANTS, AND RIGHTS-OF-WAY OF RECORD.

NOTES

- SURVEY MAP OR THE COPIES THEREOF ARE NOT VALID WITHOUT THE SIGNATURE AND THE ORIGINAL SEAL OF A FLORIDA LICENSED PROFESSIONAL LAND SURVEYOR.
- LANDS SHOWN HEREON WERE ABSTRACTED BY OLD REPUBLIC NATIONAL TITLE INSURANCE COMPANY, COMMITMENT NUMBER 719056, WITH A COMMITMENT DATE OF MARCH 2, 2021 AT 11:00PM. TITLE EXCEPTIONS WERE REVIEWED BY THIS OFFICE AND ALL PLOTTABLE EXCEPTIONS ARE SHOWN HEREON.
- ELEVATIONS SHOWN HEREON ARE RELATIVE TO THE NORTH AMERICAN VERTICAL DATUM OF 1988 AND ARE BASED ON FLORIDA DEPARTMENT OF TRANSPORTATION BENCHMARK "91 18 CW" WITH A PUBLISHED ELEVATION OF 5.92.
- BEARINGS SHOWN HEREON ARE RELATIVE TO THE NORTH LINE OF LOTS 28 AND 29 HAVING A BEARING OF SOUTH 89°39'02" WEST.
- THE "DESCRIPTION" SHOWN HEREON IS IN ACCORD WITH THE DESCRIPTION PROVIDED BY THE CLIENT.
- UNDERGROUND FOUNDATIONS WERE NOT LOCATED.
- ADDITIONS OR DELETIONS TO SURVEY MAPS BY OTHER THAN THE SIGNING PARTY OR PARTIES IS PROHIBITED WITHOUT WRITTEN CONSENT OF THE SIGNING PARTY OR PARTIES.
- FLOOD ZONE: "X" (SHADED); FLOOD INSURANCE RATE MAP NO. 12099C 0981 F; COMMUNITY NO. 125102; DATE: OCTOBER 5, 2017.
- PROPERTY ADDRESS: 1236 GEORGE BUSH BLVD, DELRAY BEACH, FL

CERTIFICATE:
 I HEREBY CERTIFY THAT THE ATTACHED BOUNDARY SURVEY OF THE HEREON DESCRIBED PROPERTY IS TRUE AND CORRECT TO THE BEST OF MY KNOWLEDGE AND BELIEF AS SURVEYED UNDER MY DIRECTION ON APRIL 7, 2021. I FURTHER CERTIFY THAT THIS BOUNDARY SURVEY MEETS THE STANDARDS OF PRACTICE SET FORTH IN CHAPTER 5J-17 ADOPTED BY THE FLORIDA BOARD OF PROFESSIONAL SURVEYORS AND MAPPERS, PURSUANT TO FLORIDA STATUTES 472.027.

DAVID P. LINDLEY, PLS
 REG. LAND SURVEYOR #5005
 STATE OF FLORIDA - LB #3591

REVISIONS	DATE	BY
FILE NAME: CAULFIELD STYLINGS		

CAULFIELD & WHEELER, INC.
 CIVIL ENGINEERING - SURVEYING
 LANDSCAPE ARCHITECTURE - SUITE 100
 7900 GLADES ROAD, 33434
 BOCA RATON, FLORIDA, 33434
 PHONE: (561)-392-1981 / FAX: (561)-750-1452

**1236 GEORGE BUSH BOULEVARD
 BOUNDARY SURVEY**

DATE: MAR 2021
 DRAWN BY: TMS
 F.B./PG. ELEC.
 SCALE: 1"=10'

JOB # 9356
 SHT. NO. 1
 OF 1 SHEETS