



Draft Climate Action Plan (CAP)

Always Delay Comprehensive Plan

Objective CSR 7.1 City Sustainability Practices- Develop a baseline of City sustainable practices and determine methods to increase the sustainability of the city with prioritized actions that result in the greatest greenhouse gas reductions.

Policy CSR 7.1.2 Build on the work of the Green Implementation Advancement Board, previous Sustainability Reports and recommendations of the City's Green Task Force by developing a Sustainability and Climate Action Plan that prioritizes actions, recommendations and outcomes to reduce greenhouse gas emissions. Update the Sustainability and Climate Action Plan recommendations every five (5) years. [Complete by 2025]



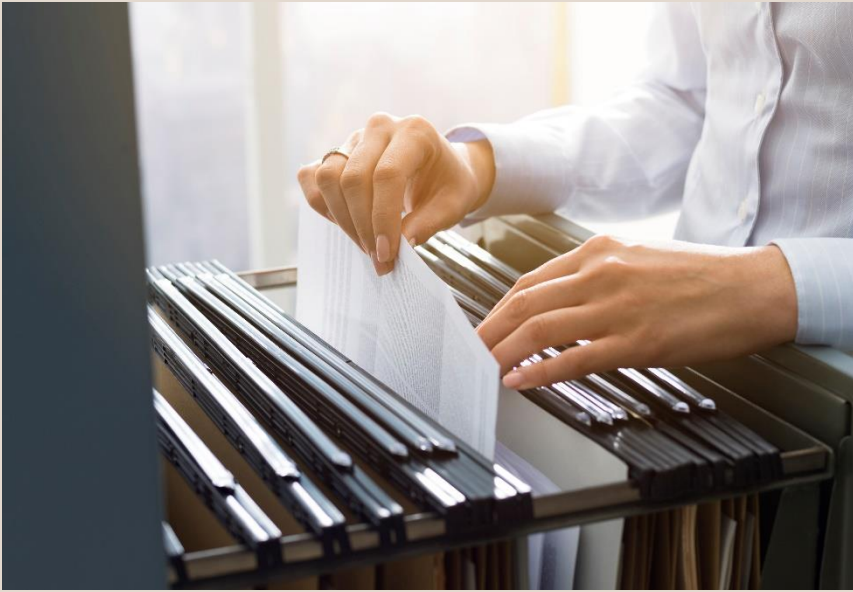
Climate Action - Preliminary Steps

Green Implementation Advancement Board (GIAB)- Presentation Feb 2022 to City Commission, also memos sent July 2023, and March 2024

Oct 2022 – Greenhouse Gas (GHG) Inventory completed for Delray Beach

Office of Sustainability and Resilience (OSAR)- Presentations Earth Month 2023, Climate & Art 2023, City Commission Sep 2023

Resolution 201-23 adopted Nov 7, 2023- Regional Climate Action Plan v3



Climate Action Plan Input

More than 350 responses were submitted to the Climate Action Plan Survey.

More than 80% of responses indicated that a CAP should be developed addressing six Section Topics.

Section Topics: Energy – Built Environment, Green Infrastructure & Natural Environment, Water, Waste, Transportation, and Climate Resilience

City staff and partners developed strategies to address the challenges identified within each of the sections.





GUIDING PRINCIPLES

FAIRNESS

OUTREACH



ENERGY – BUILT ENVIRONMENT

Energy Efficiency of City Facilities

Energy Savings Performance Contracting (ESPC)
Electrical Usage Analysis, Benchmarking
Retrofits, Thermostats, Controllers, LED Lighting
Building Operations & Maintenance Staff Training
Capital Improvement Plan

Community Energy Efficiency (Residential and Business)

FPL Dashboard, Benchmarking
Green Building Ordinance
Building Operations & Maintenance Staff Training
Grants, Earmarks, Incentives, Vouchers
Solar Energy

ENERGY – BUILT ENVIRONMENT

Renewable Energy and Storage at City Facilities

Energy Savings Performance Contracting (ESPC)

Emergency and Recovery Planning

Battery Storage

Solar Site Assessments

Capital Improvement Plan

Other – From Public Comments

Control Development, Promote Density

Address Gas-Powered Lawn Equipment

Green Roofs



GREEN INFRASTRUCTURE & NATURAL ENVIRONMENT

Dune Restoration

- Dune Management Plan

- Encourage Research, Partner with Universities and
Non-governmental Organizations

Tree Planting Program

- Tree Drop-Off

- Right Tree Right Place

- Diversity of Species

- Tree Maintenance



GREEN INFRASTRUCTURE & NATURAL ENVIRONMENT

Protection of Existing Trees

- Ordinance, Enforcement
- Specimen Trees
- City Arborist/Forester
- Control Invasive Species

Parks Habitat Restoration

- Restoration Plans, Functional Linkages
- Pocket Refuges, Pollinator Gardens
- Herbicide Application License
- Legislative Priorities

An aerial photograph of a lush green landscape. A winding path or road cuts through a dense forest of trees. In the upper left, there's a small clearing with some structures and a circular feature. The overall scene is a mix of greenery and man-made elements.

GREEN INFRASTRUCTURE & NATURAL ENVIRONMENT

Coral Reef Restoration

- Coral Nursery
- Coral Outplanting
- Reef Monitoring
- Reef Consortium Support Group



WATER

Enhance Stormwater System to Manage Extreme Rainfall Events

Swales

Permeable Surfaces, “Low Impact Development”

Stormwater Master Plan Revision

Tidal/ Sunny Day Flooding Protection

Municipal Separate Storm Sewer System (MS4)

Water Use Efficiency/Conservation Program

Water Audit- continuous

High Usage Customers

Enforce Watering Ordinance

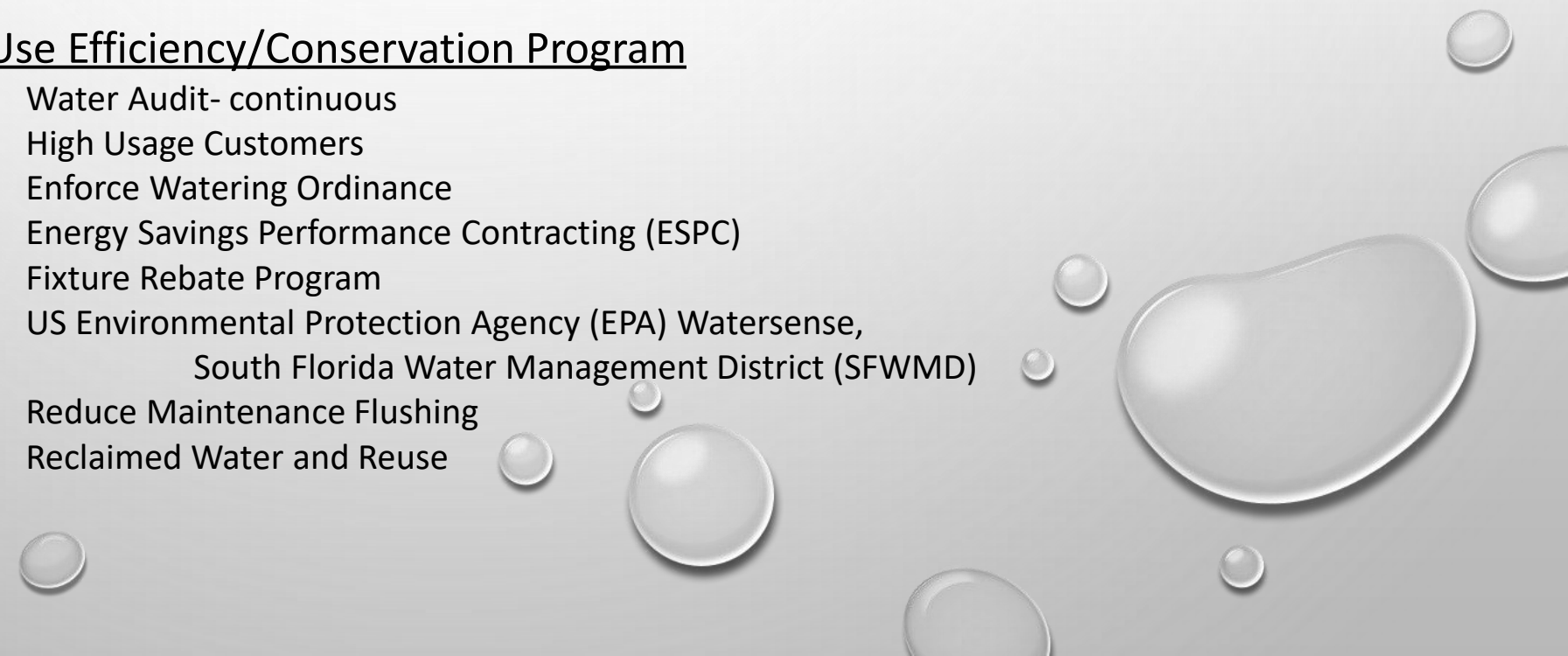
Energy Savings Performance Contracting (ESPC)

Fixture Rebate Program

US Environmental Protection Agency (EPA) Watersense,
South Florida Water Management District (SFWMD)

Reduce Maintenance Flushing

Reclaimed Water and Reuse





WATER

Hardening of Water-related Infrastructure

Treatment Plant

Distribution System

Collection System

Alternative Energy, Generators, Batteries

Maintenance Plan

Aquifer Protection



WASTE

Waste Reduction

Awareness of Environmentally Preferred Products

City Policies, Manual, City as Example

Single-use Plastics

Material Declarations

Special Events, Recycle Right Events

Old School Square, Green Market, Coco Market, Schools, etc.

Straw Ordinance Revision

Microplastics, Health

Adopt-a-Street

Beach Art Receptacles

WASTE

Expand City's Recycling Program (Multi-family, Commercial)

Multi-family Residential Developments

Commercial- Individual Agreement with Vendor

Reduce and Reuse Strategies

Outreach- Waste to Energy, Dual Stream

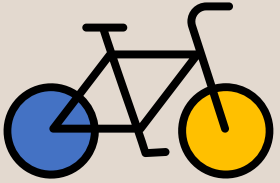
Awareness of Environmentally Preferred Products

Waste Reduction

Other – From Public Comments

Composting

TRANSPORTATION



Multi-modal Transportation

Bike and Pedestrian Master Plan

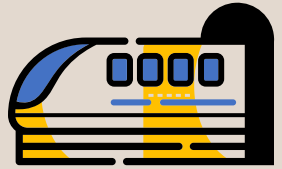
Freebee, Shuttle, Trolley

Tri-Rail

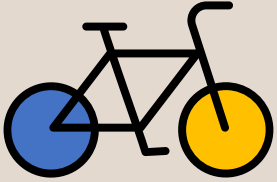
Fixed and On-Demand Transit, Special Event Access

Commuting Workers, Incentives

Demand-Based Parking Fees

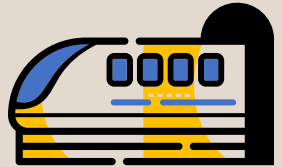


TRANSPORTATION



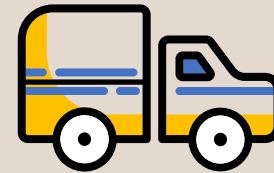
Regional Public Transportation

Palm Beach Transportation Planning Agency, Palm Tran, WPBGo
Florida Department of Transportation (FDOT) District 4
Countywide Transportation Master Plan
Bike and Pedestrian Master Plan
Rail, Bus Connectivity- Atlantic Ave, Congress Blvd, Major Centers



Increase Fuel Efficiency of City Fleet

Fleet Transition Plan
Low Speed Vehicles (LSVs)



CLIMATE RESILIENCE

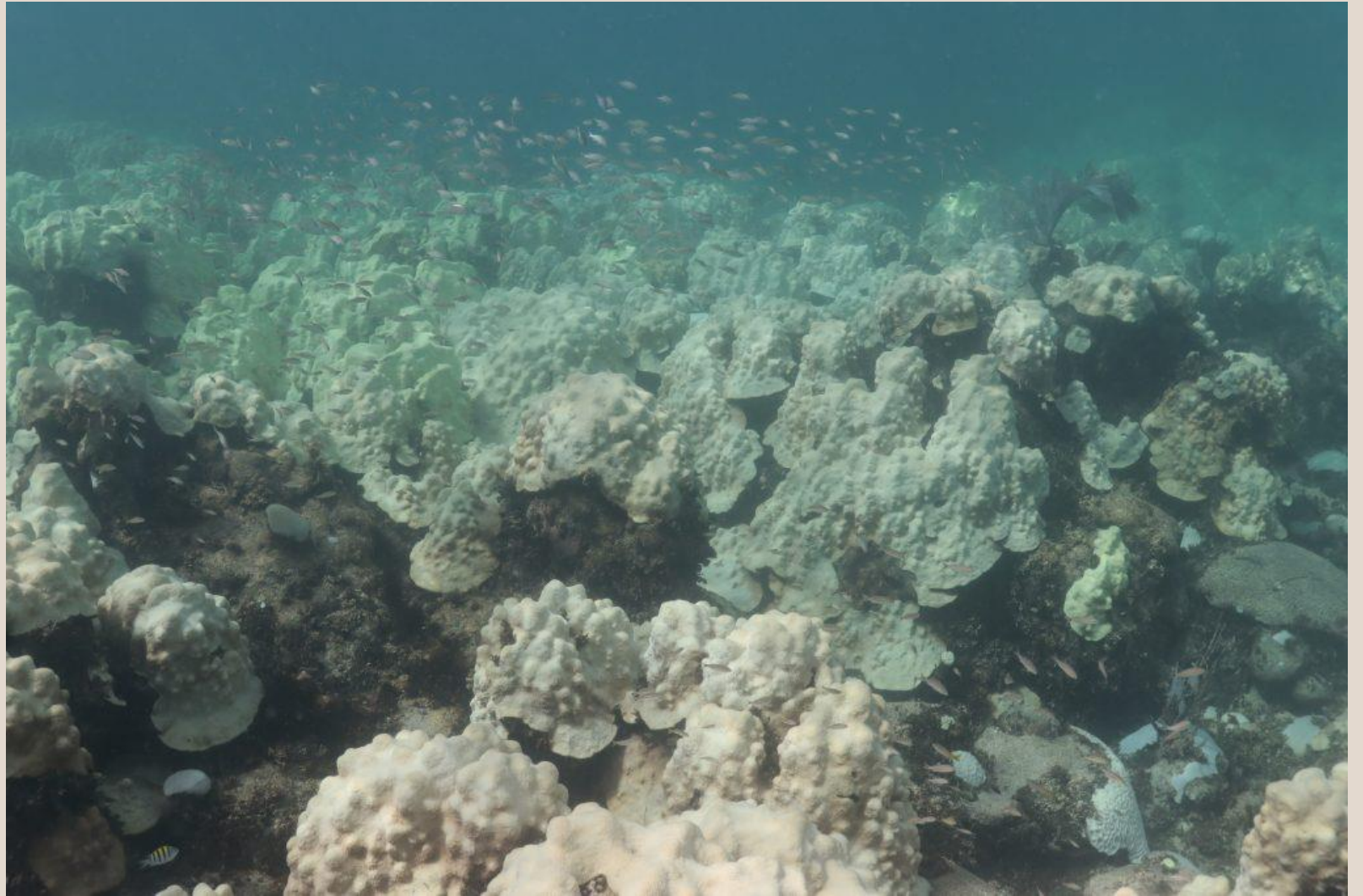
Tree Planting Program

Enhance Stormwater System to Manage Extreme Rainfall Events

Dune Restoration

Coral Reef Restoration

THANK YOU



Orbicella Faveolata (Mountainous Star Coral) bleached at Cheeca Rocks on July 31st, 2023.
(NOAA)