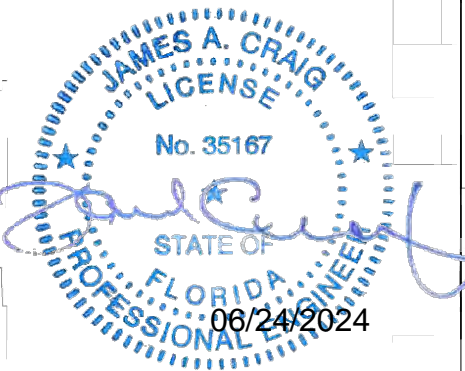


DESIGN AND ENGINEERING INC.

STRUCTURAL AND CIVIL ENGINEERS
423 Aspen Grove Dr., Suite 300, Franklin, TN 37067
Phone: 615.370.1779 www.dandenginc.us

FL COA #00007756



JAMES A. CRAIG, P.E. (CERT #35167)
FLORIDA COA #0007756

DO NOT SCALE DRAWINGS
CONTRACTOR TO VERIFY
ALL EXISTING CONDITIONS AND
DIMENSIONS. NOTIFY ARCHITECT
OF ANY DISCREPANCIES PRIOR
TO BEGINNING CONSTRUCTION

PROJECT NUMBER
670234

BRICKTOP'S
12 NE 5TH AVENUE
DELRAY BEACH, FL 33483

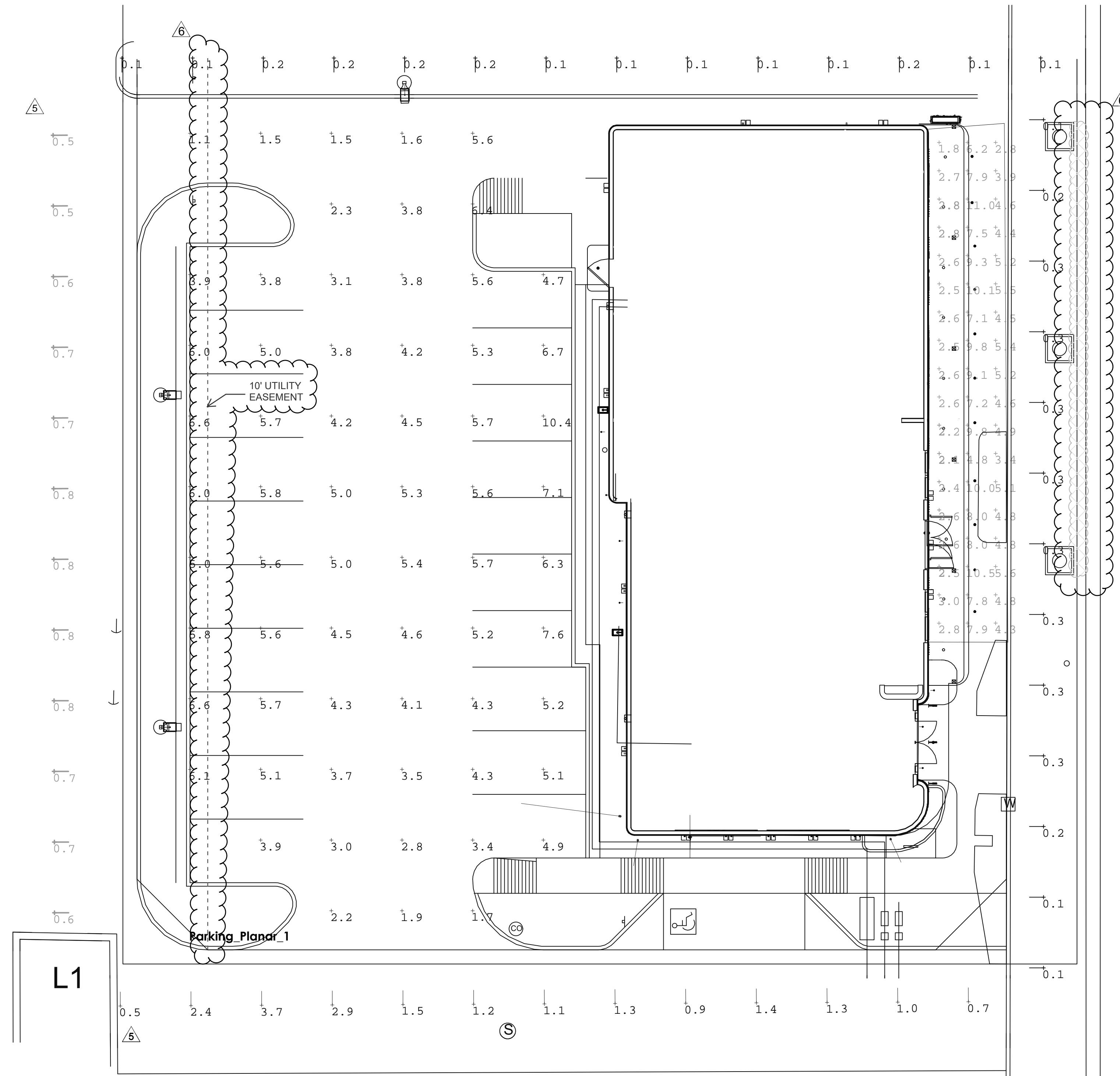
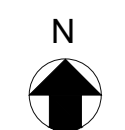
DRAWING ISSUE

NO	REVISION DESCRIPTION	DATE	TBD
6	City Comments	6/24/2024	PERMIT SET
5	City Comments	6/18/2024	
3	City Comments	9/7/2023	
2	City Comments	5/12/2023	
1	City Comments	3/15/2023	

Drawing Title

**EXTERIOR
PHOTOMETRIC**

PH - 001



Luminaire Schedule

Project: BRICKTOP DELRAY BEACH, FL. IFC REV 1: 10-4-2020

Symbol	Qty	Label	Arrangement	LUF	MANUFACT	Description	Mounting Height	Luminaire Width	Total Width	Flare/Beam	IES Rating
18	8		Single	0.900	ARRISMADE	14211N400	7.44, 7.44, 14.88	7	126	8.5m	80-UD-G0
17	1	C	Single	0.900	HK LIGHTING GROUP	ZNL-16-WNF-8-12V-SW-S7	10.5, 18.33	10	70	ZNL-16-10W-WW-IES	81-SD-G0
13	0	D	Single	0.900	HK LIGHTING GROUP	ZNL-16-CNF-8-12V-SW-S7	7.25, 10	5	40	ZNL-16-10W-WW-IES	81-SD-G0
3	1	F	Single	1.000	IMPROV LIGHTING	PS-10-10-40-30-30W-100-TW	20.6	12.25	36.09	PS-10-40-IES	81-SD-G0
12	1A		Single	0.900	GARBCO	ECF-S-32L-1-2A-WW-G2-BLC	20	119.7863	129.297	ECF-S-32L-1-2A-WW-G2-BLC-IES	81-SD-G2
11	1C		Single	0.900	GARBCO	ECF-S-32L-100-WW-G2-LCL	20	71.82	71.82	ECF-S-32L-100-WW-G2-LCL-IES	80-UB-G1
12	1B		Single	0.900	VOSIGNARE	V5C-154-32-C-7-W-18V	15	74	148	V5C-154_32C_7_4E-IES	82-SD-G2

Calculation Summary

Label	CalcType	Units	Avg	Max	Min	Avg/Min	Max/Min
Alley Way South	Illuminance	Fc	0.9	3.7	0.5	5.1	12.3
Alley Way West	Illuminance	Fc	0.7	0.8	0.5	1.7	2.0
Calc PL5	Illuminance	Fc	0.0	0.4	0.1	2.8	4.0
Calc PL6	Illuminance	Fc	0.2	1.6	0.1	6.0	16.0
Outdoor Seating_Planor	Illuminance	Fc	5.2	11.0	1.8	2.9	6.1
Parking_Planor_1	Illuminance	Fc	4.6	10.4	1.1	4.2	9.5
SPILL VERTICAL	Illuminance	Fc	0.9	3.7	0.1	9.3	37.0