

Maintenance of Traffic

February 18, 2025

DELRAY



BEACH

SUNDY VILLAGE

CITY COMMISSION PRESENTATION

Sundy Village Block 69 Location



Atlantic Avenue

Block 61

SW 1st Avenue

Block 69

Swinton Avenue

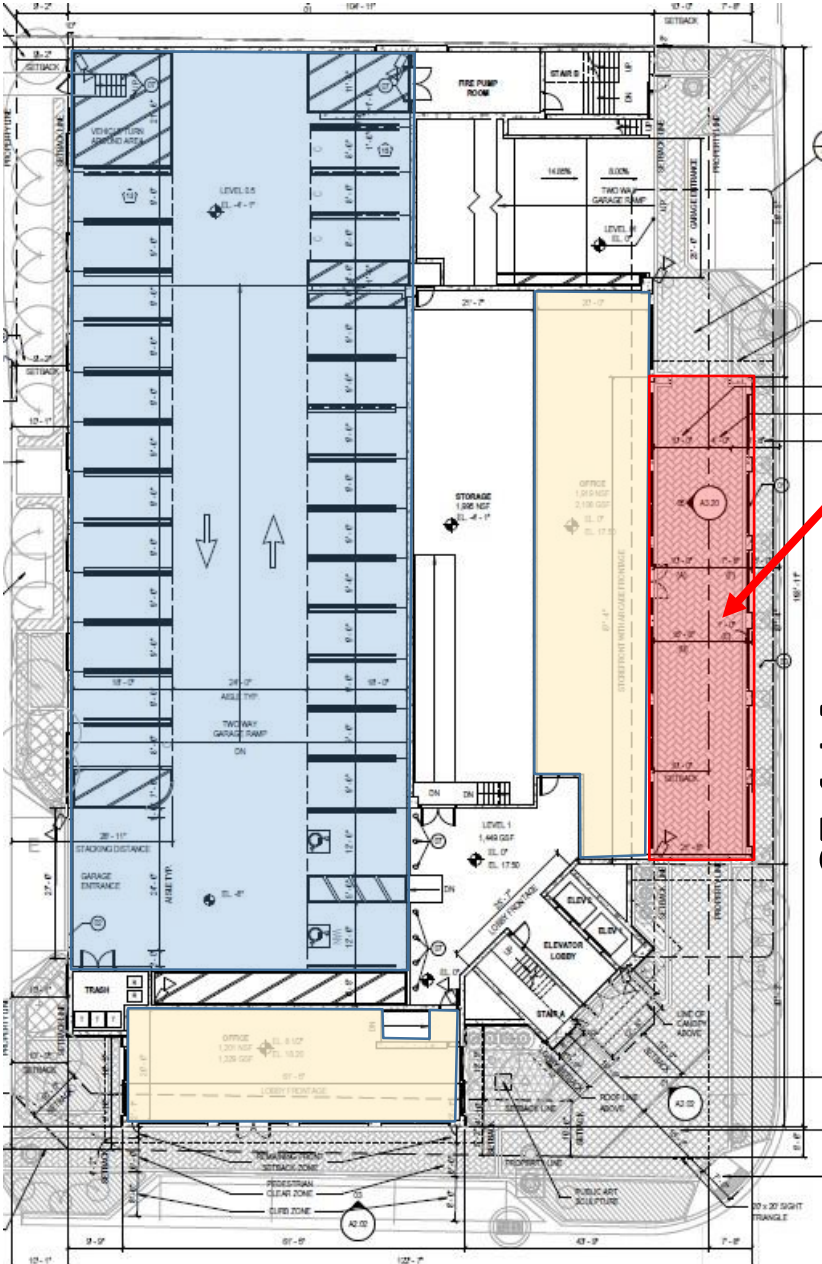
SE 1st Street

Block 70

SE 1st Avenue

Sundry House

Parking Garage Site Plan and Underground Level



Arcade

SE 1st Avenue

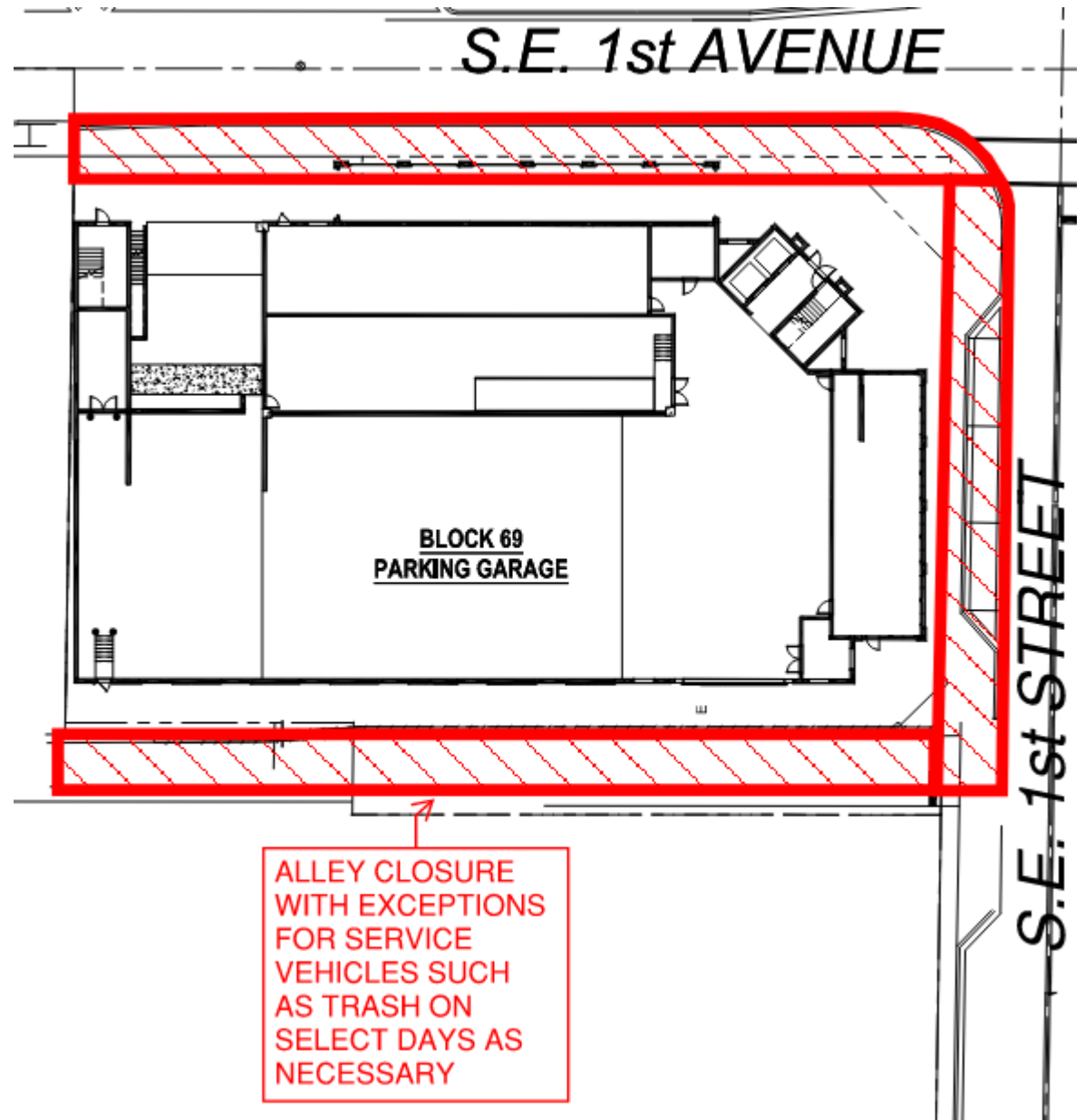
SE 1st Street

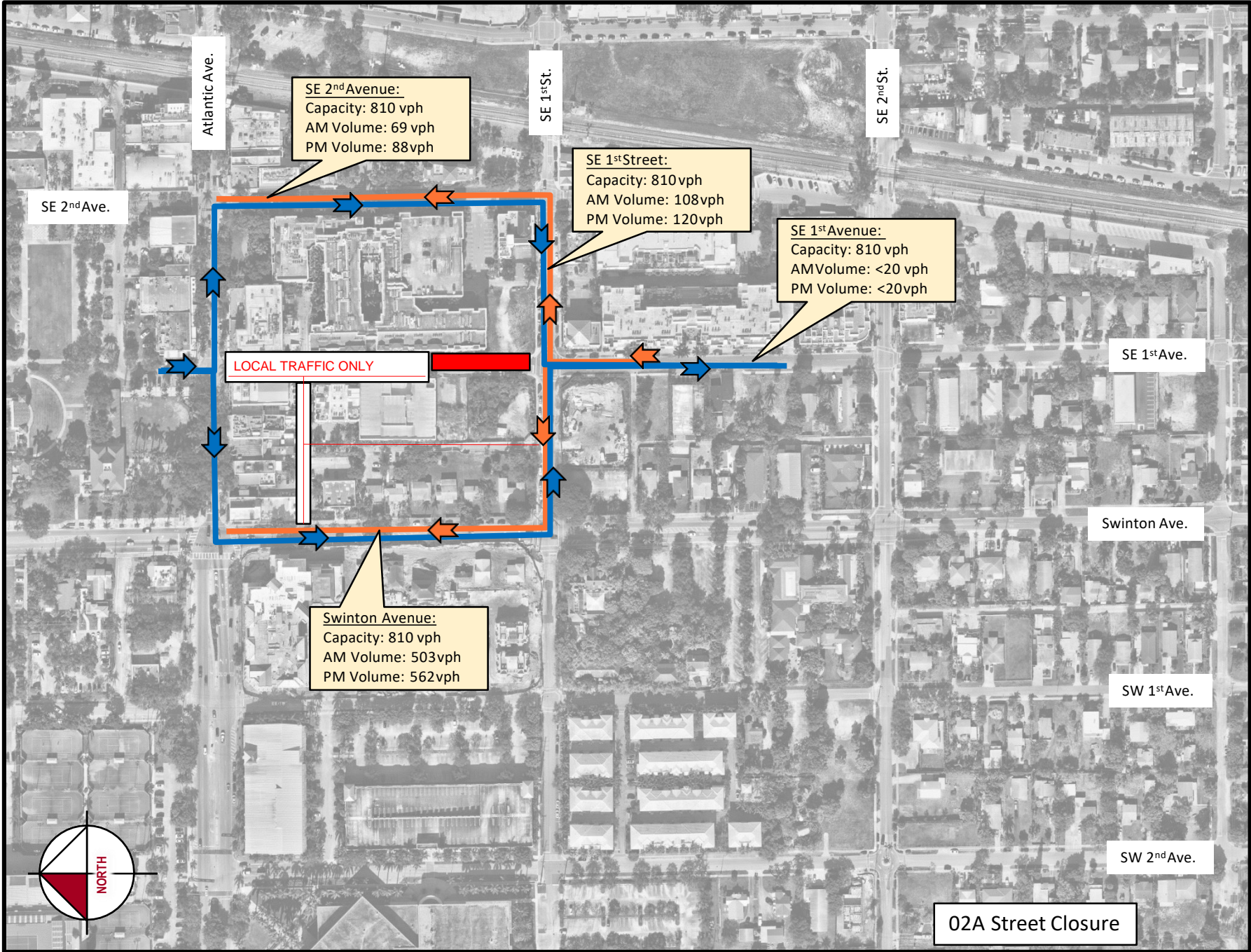
NW Corner of SE 1st Avenue and SE 1st Street

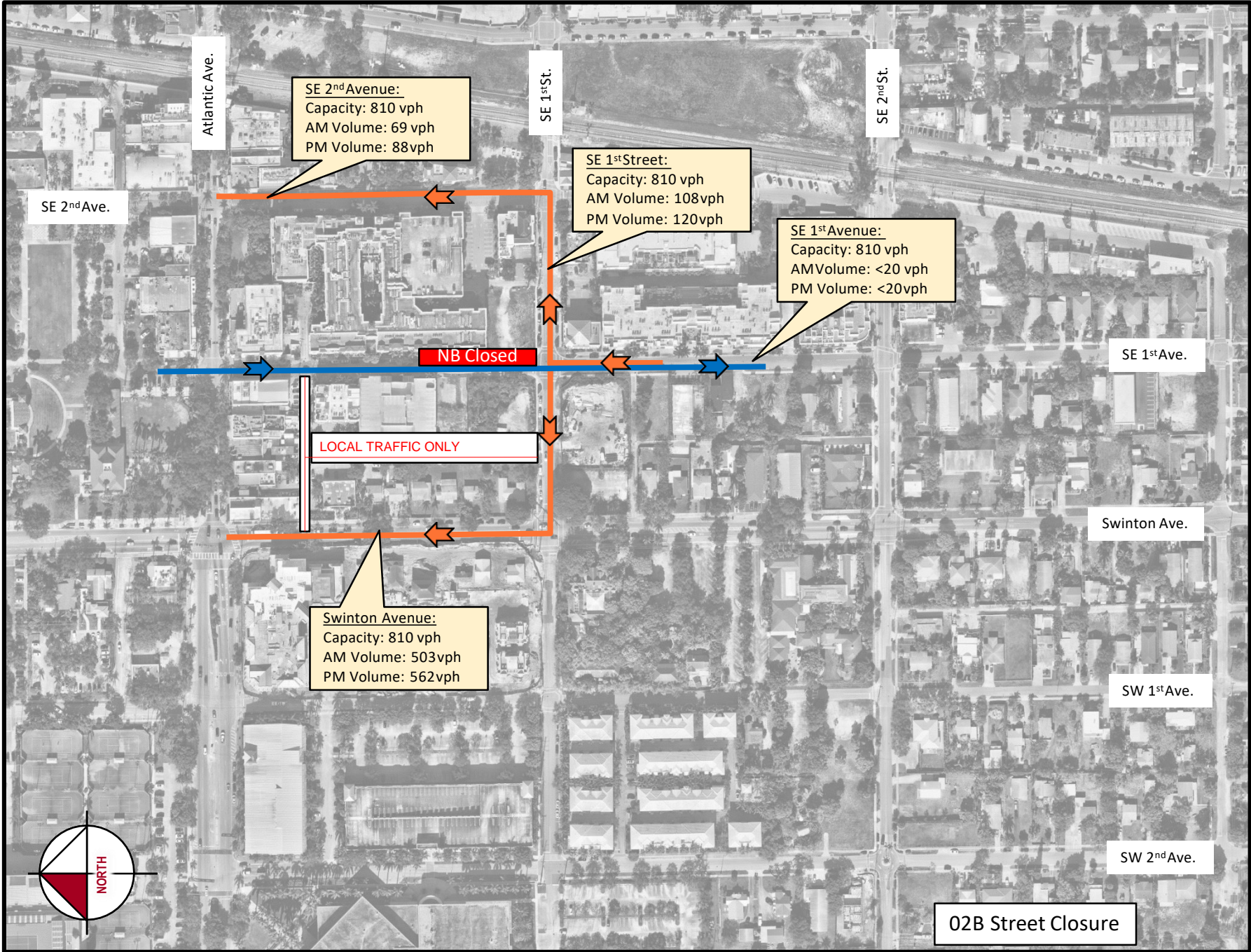


01: SIDEWALK & ALLEY CLOSURE

- START DATE + 14 MONTHS
- ADJACENT PROPERTY SAFETY CLOSURES







Sundy Village Block 70 Location



Atlantic Avenue

Block 61

SW 1st Avenue

Block 69

SE 1st Avenue

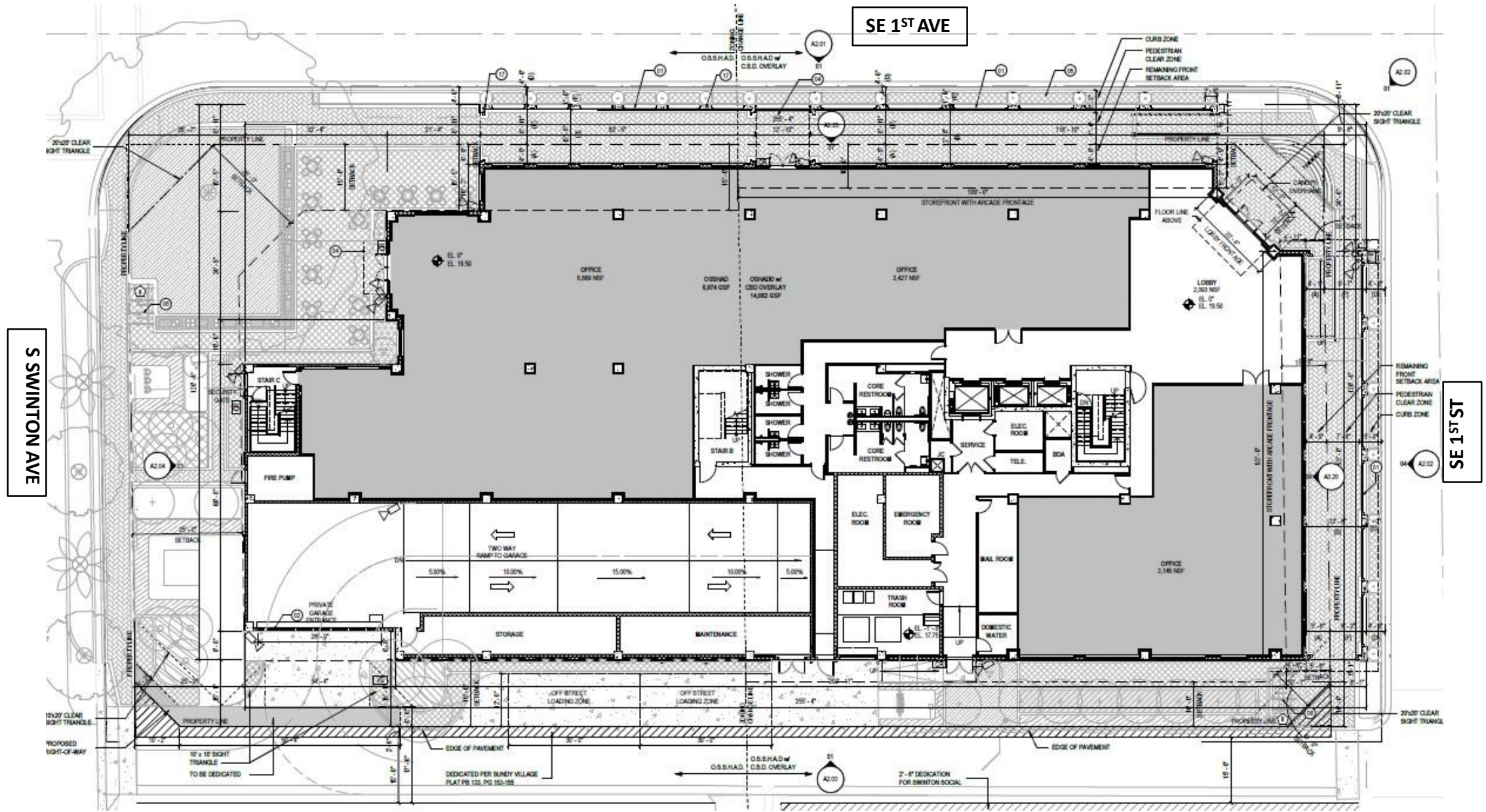
SE 1st Street

Block 70

Swinton Avenue

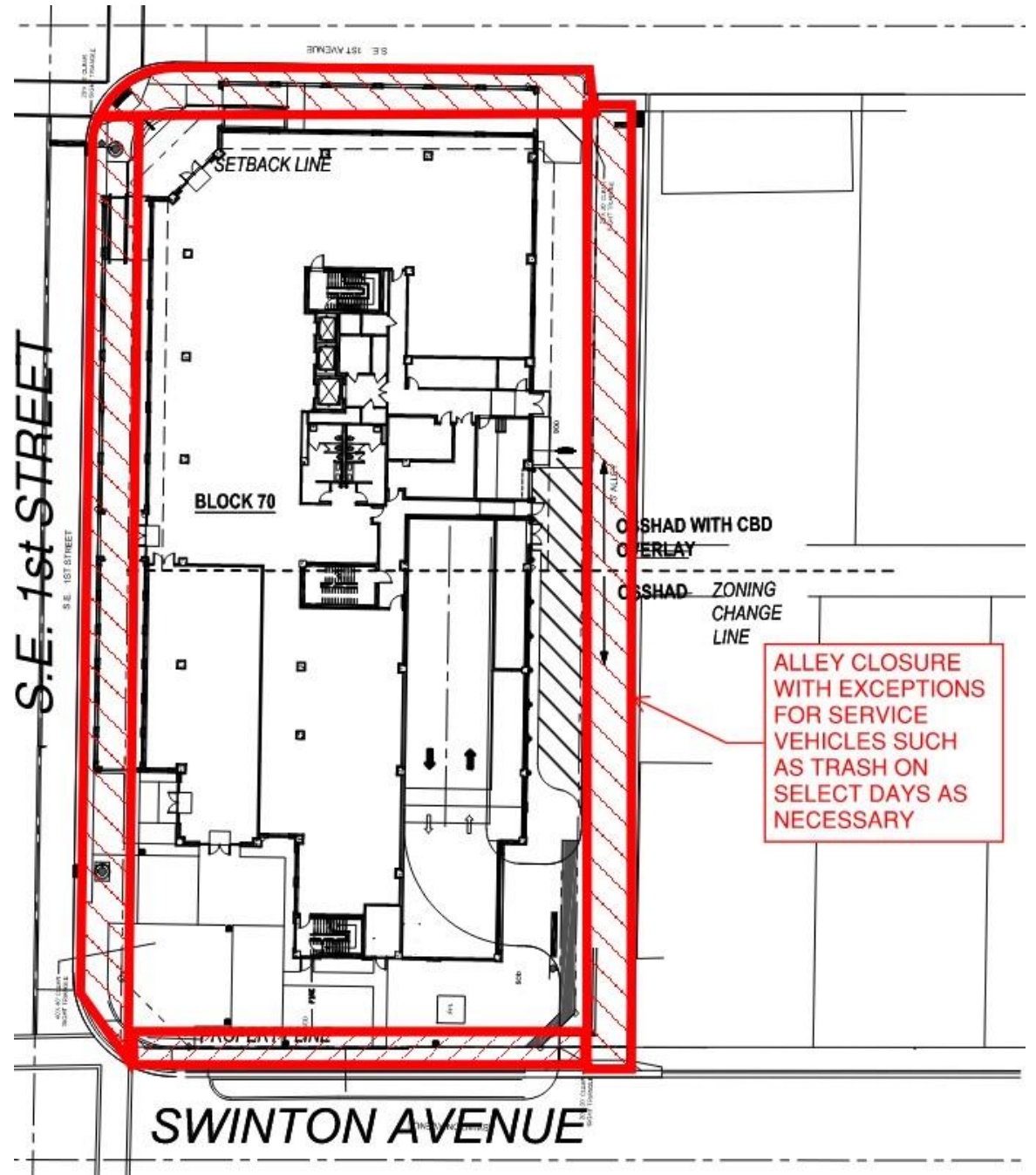
Sundry House

Block 70 Site Plan



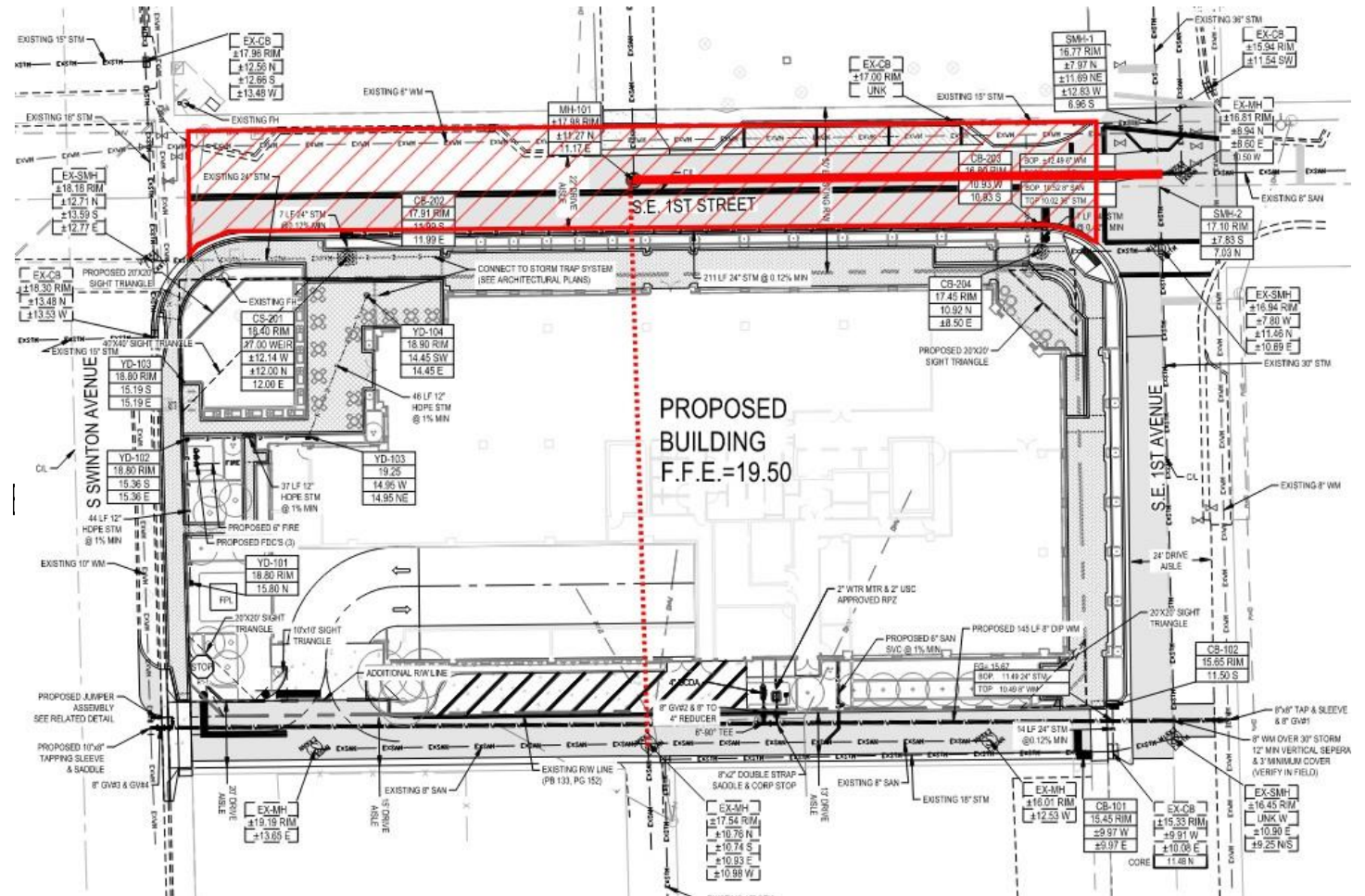
01: SIDEWALK & ALLEY CLOSURE

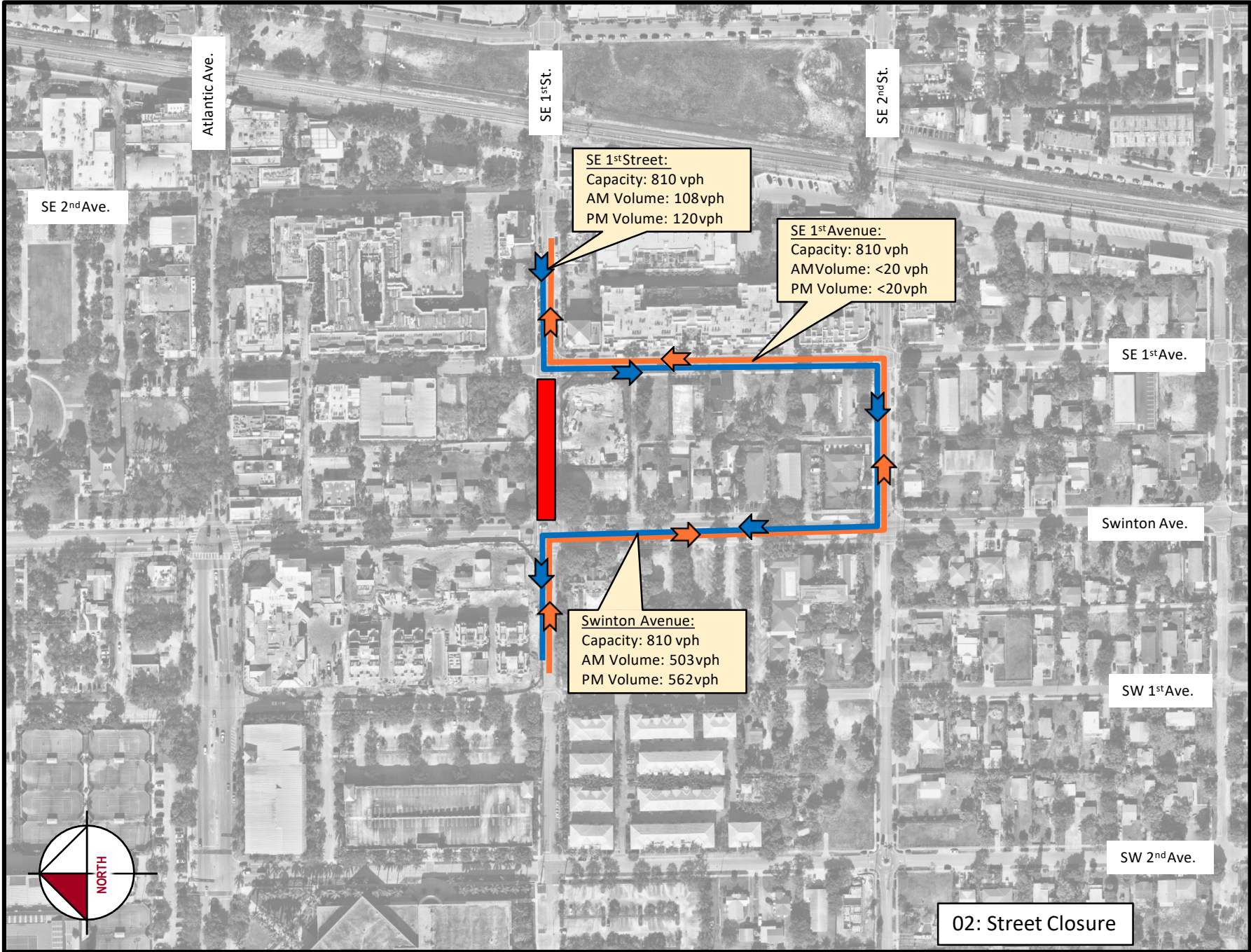
- START DATE + 15 MONTHS
- ADJACENT PROPERTY SAFETY CLOSURES

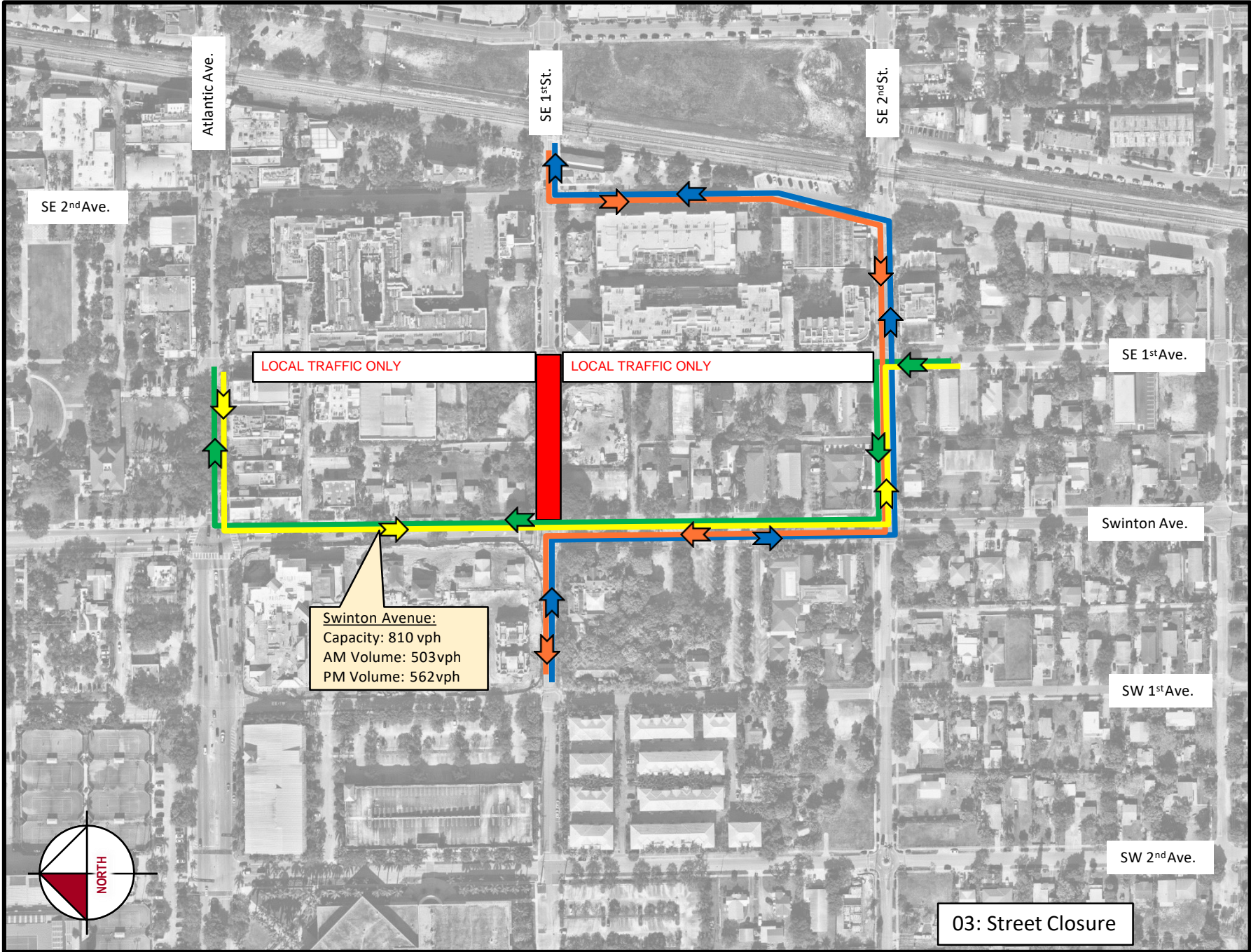


02: STREET CLOSURE

- START DATE + 4 WEEKS
- TO RE-ROUTE SEWER & STORM WITHIN S.E. 1ST ST

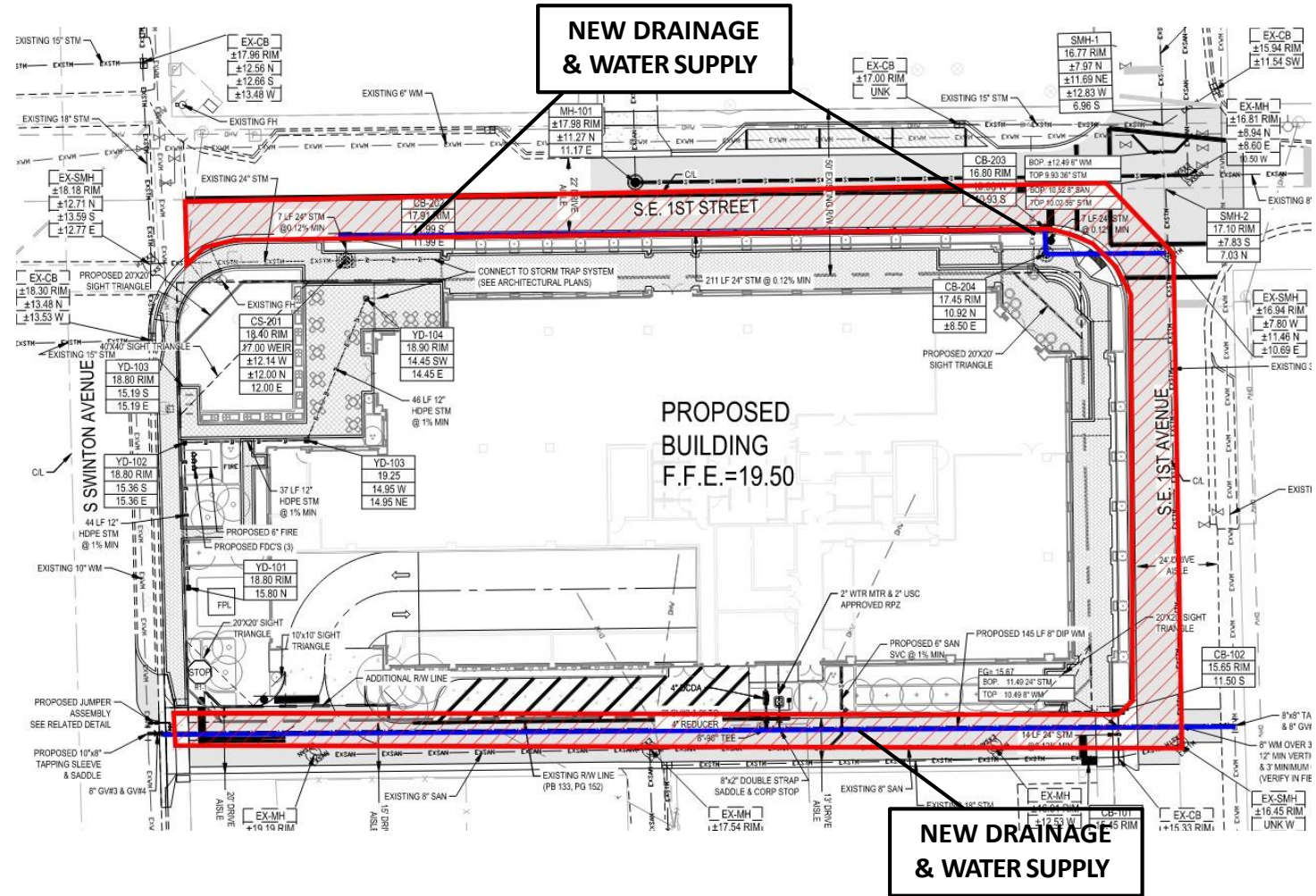


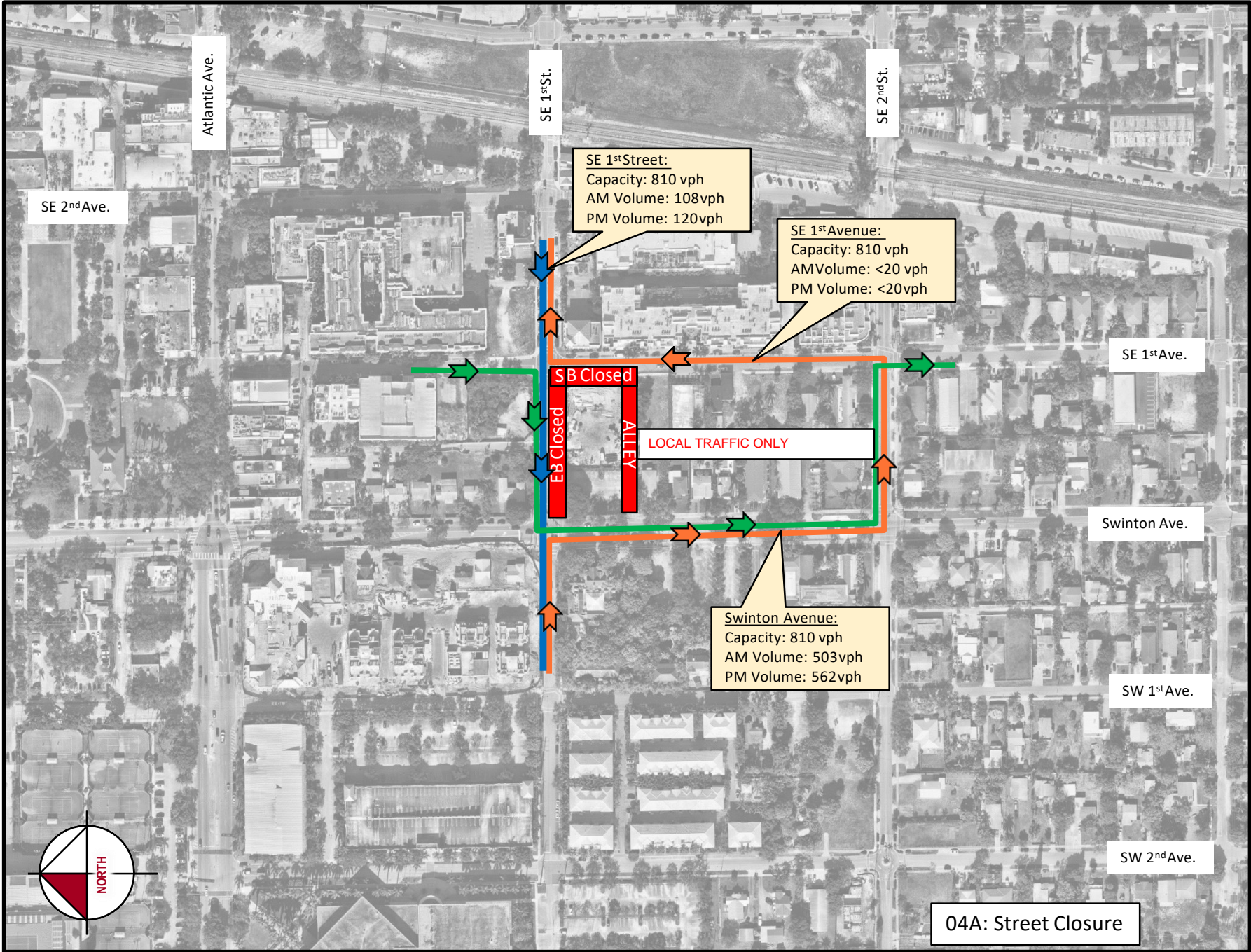




04A: STREET CLOSURE

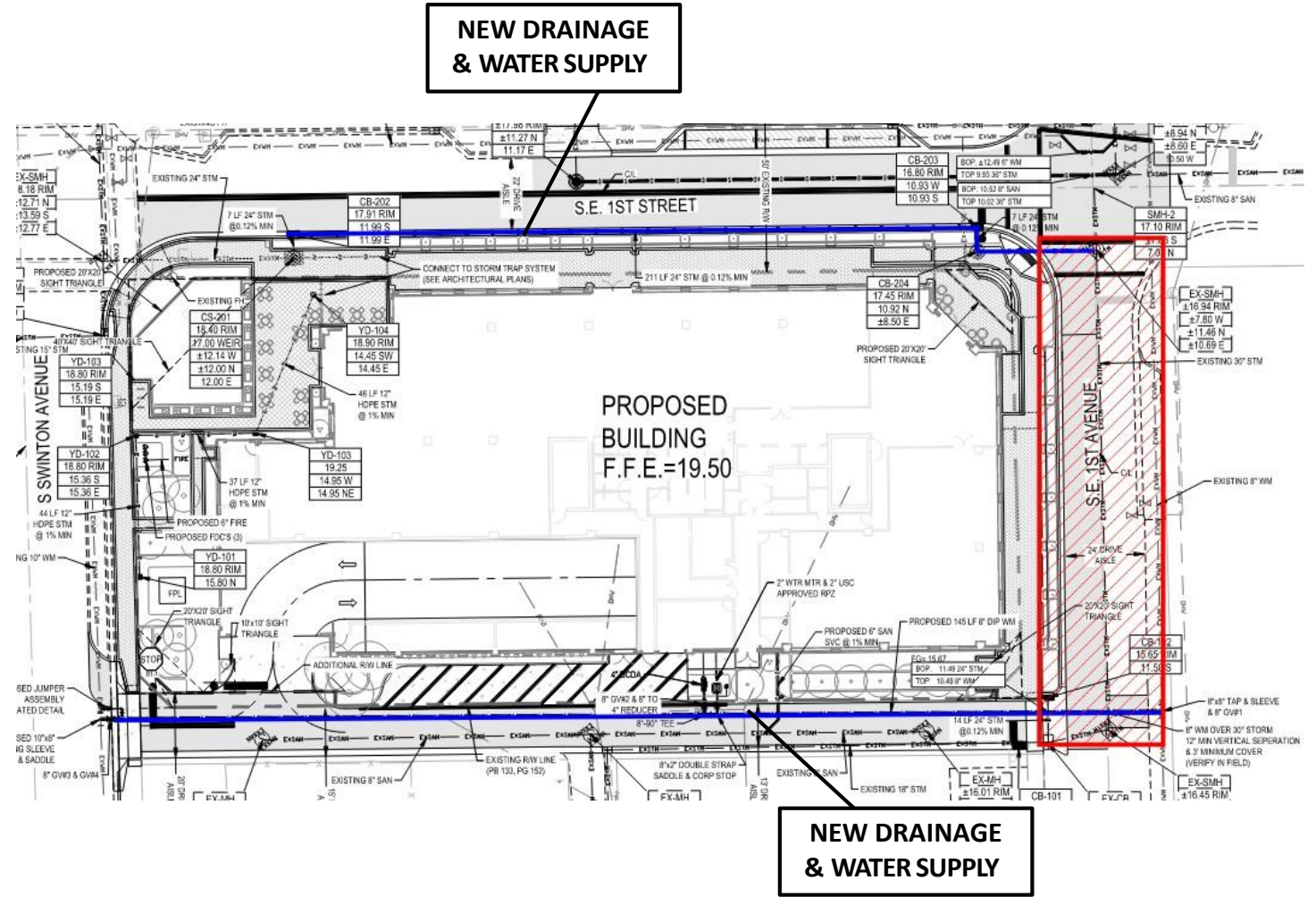
- START DATE + 8 WEEKS
- INSTALLATION & CONNECTION OF NEW DRAINAGE AND WATER SUPPLY FROM PROPERTY TO CITY UTILITIES.
- WILL REQUIRE CLOSURE OF SE 1ST STREET EASTBOUND AND CLOSURE OF SE 1ST AVE SOUTHBOUND

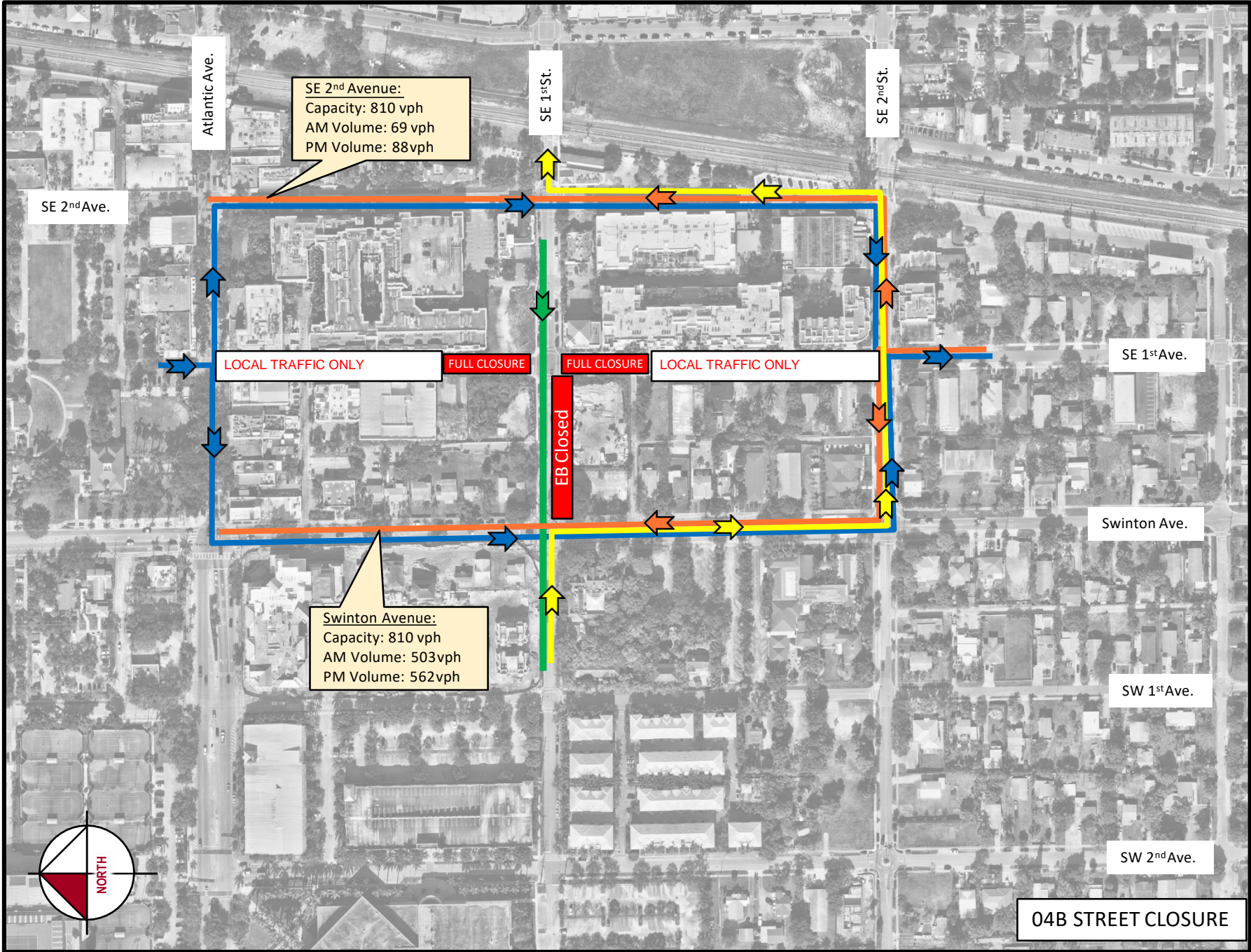


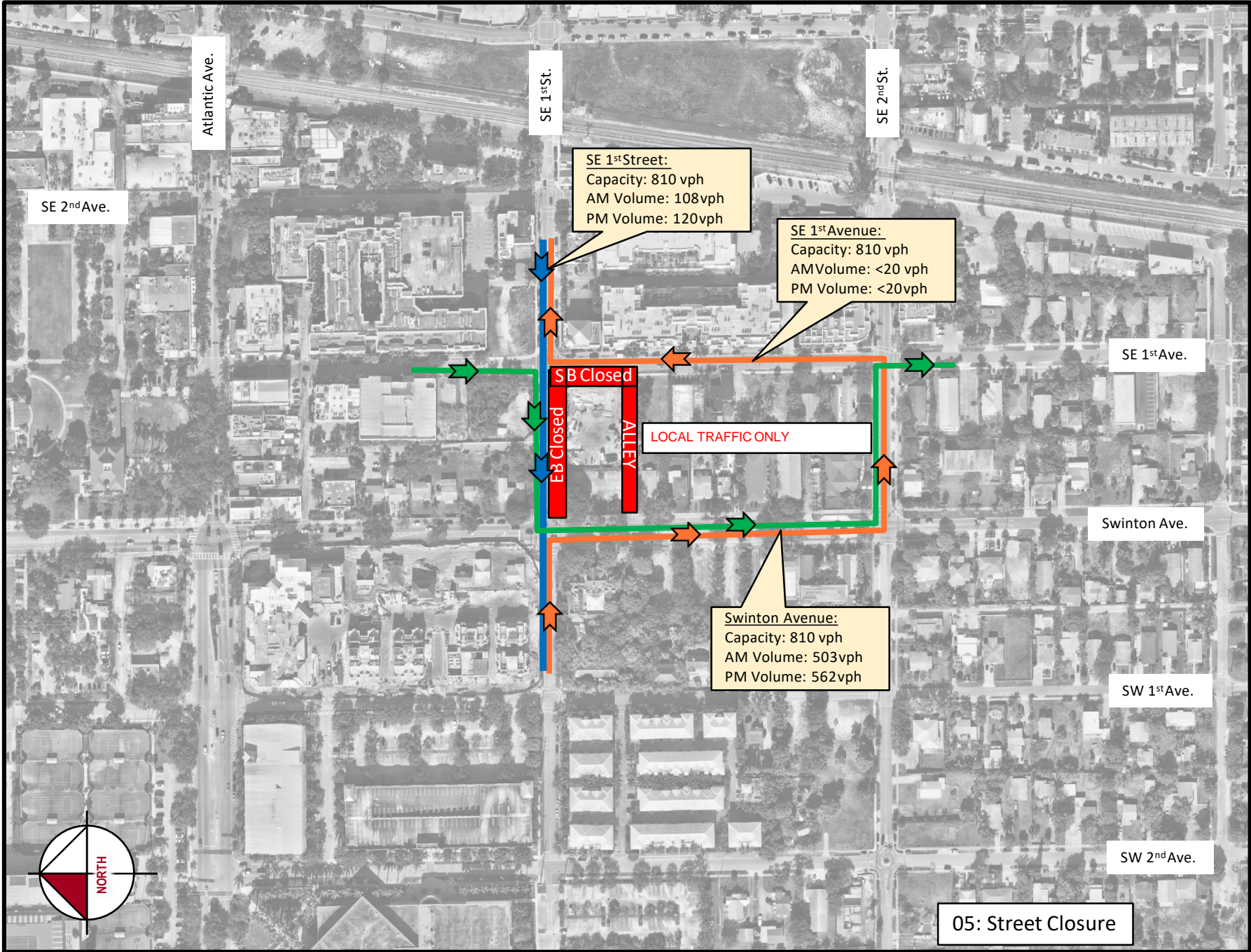


04B: STREET CLOSURE

- START DATE + 3 WEEKS
- ADDITIONAL CLOSURE OF SE 1ST AVE NORTH AND SOUTHBOUND LANES TO CONNECT WATER MAIN AND TAP

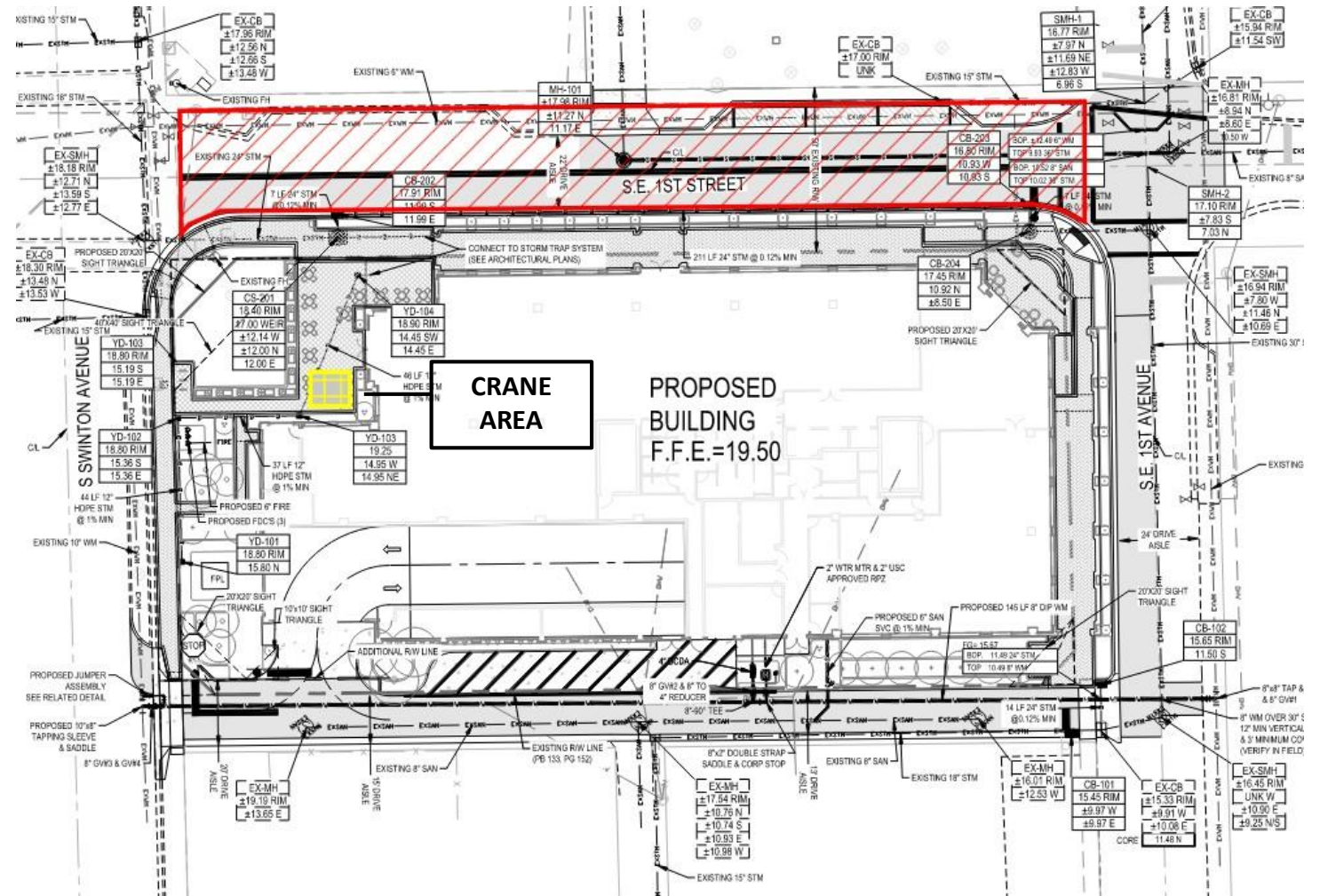


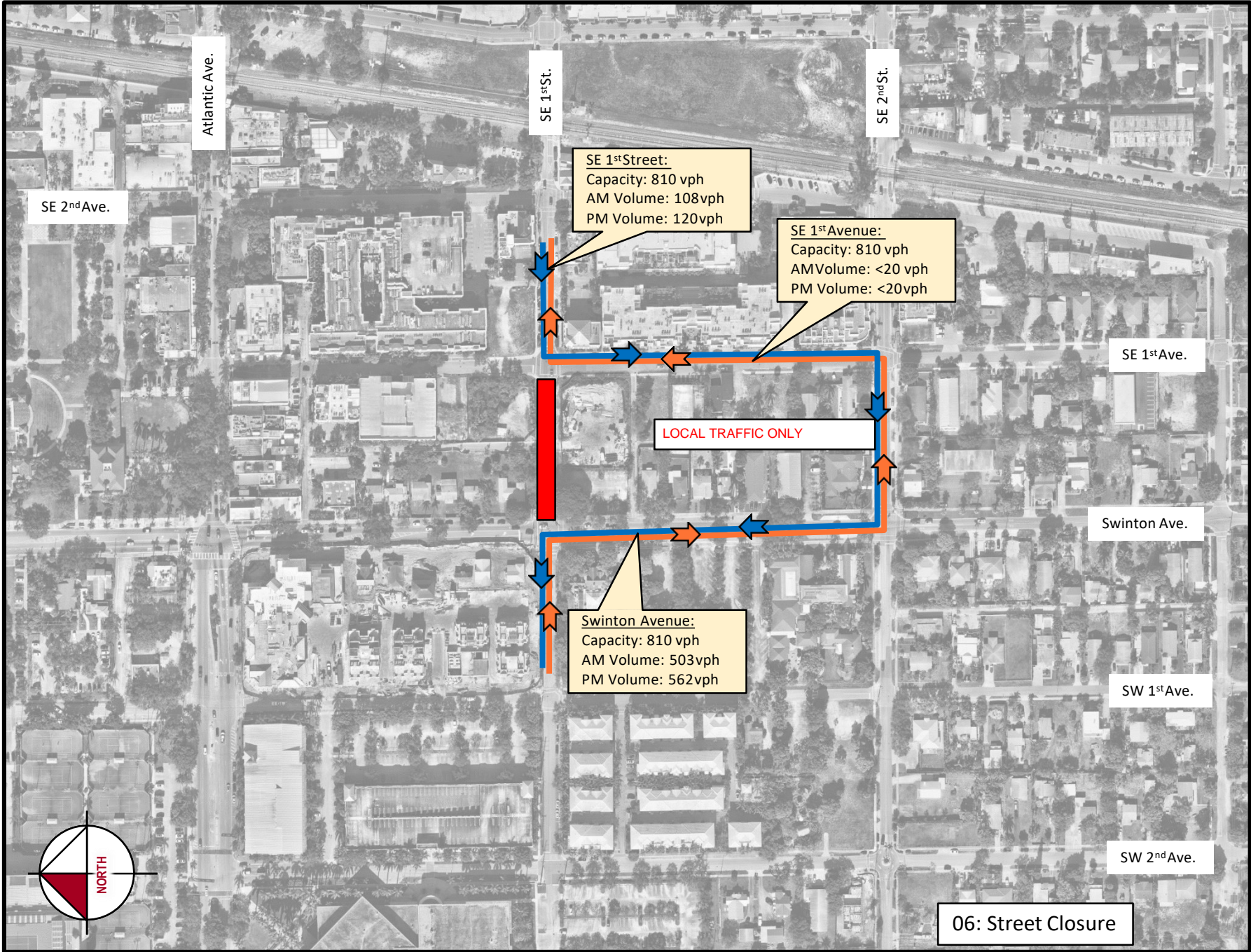




06: STREET CLOSURE

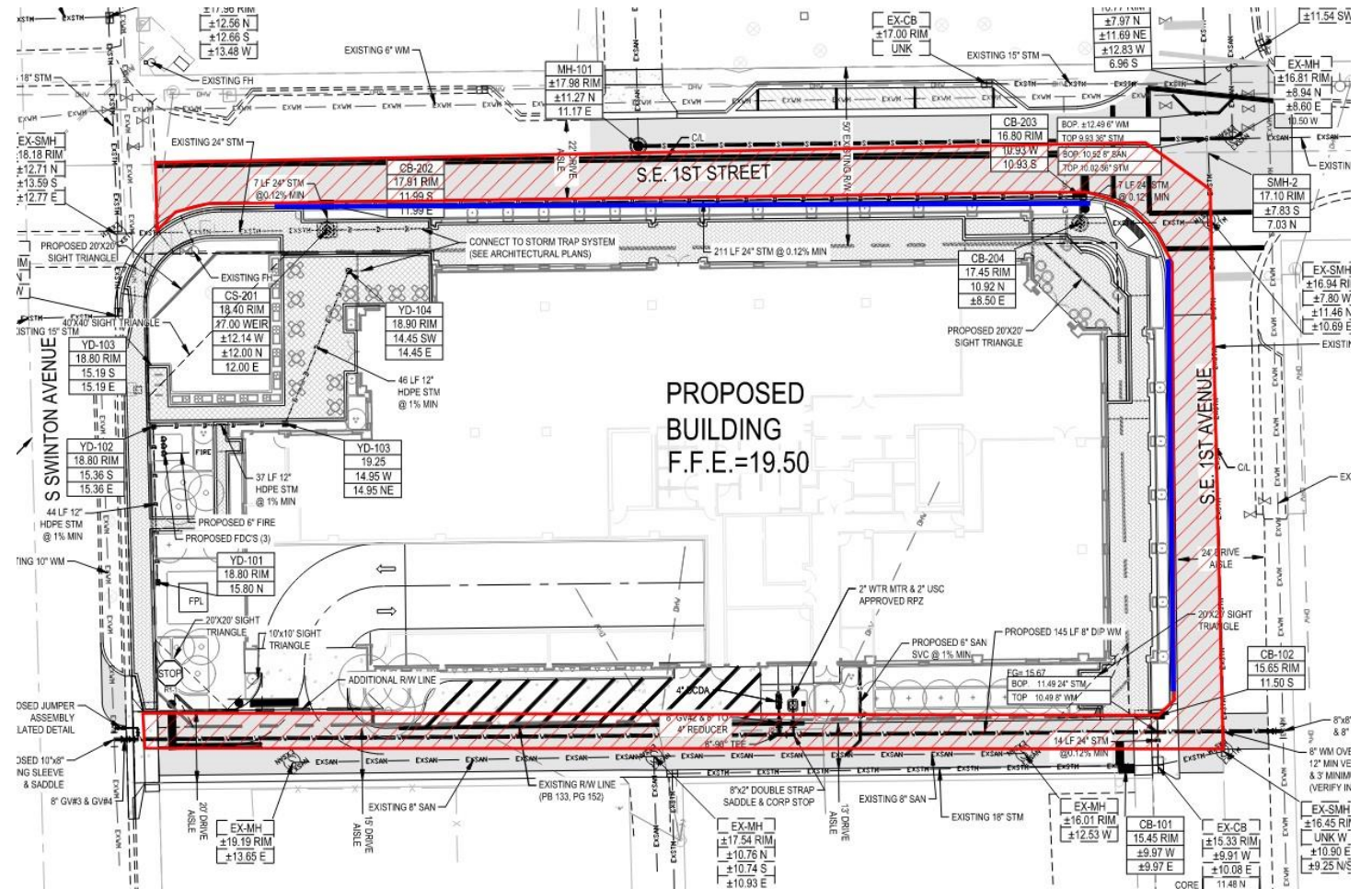
- START DATE + 1 WEEK
- DELIVERY AND ASSEMBLY OF CRANE

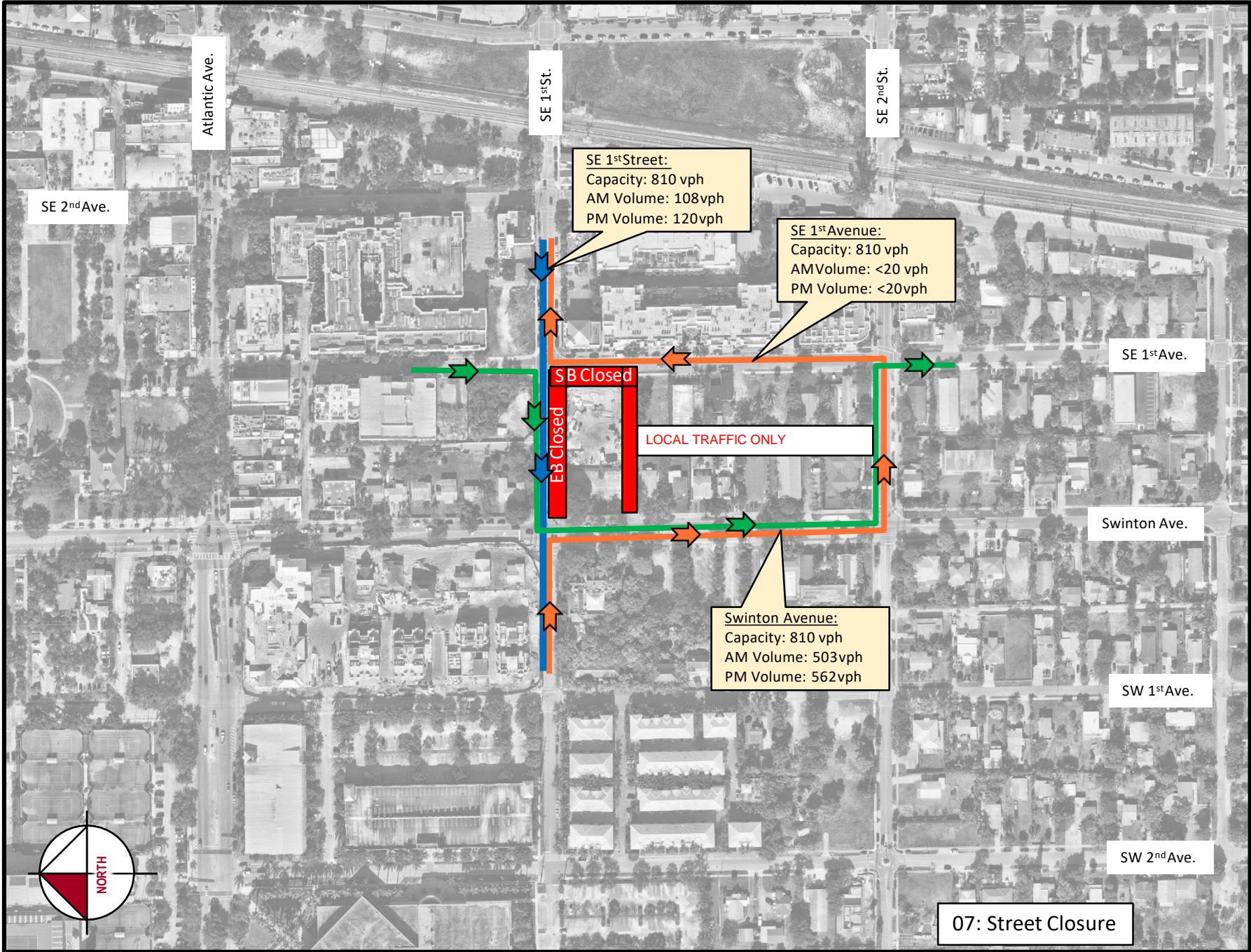




07: STREET CLOSURE

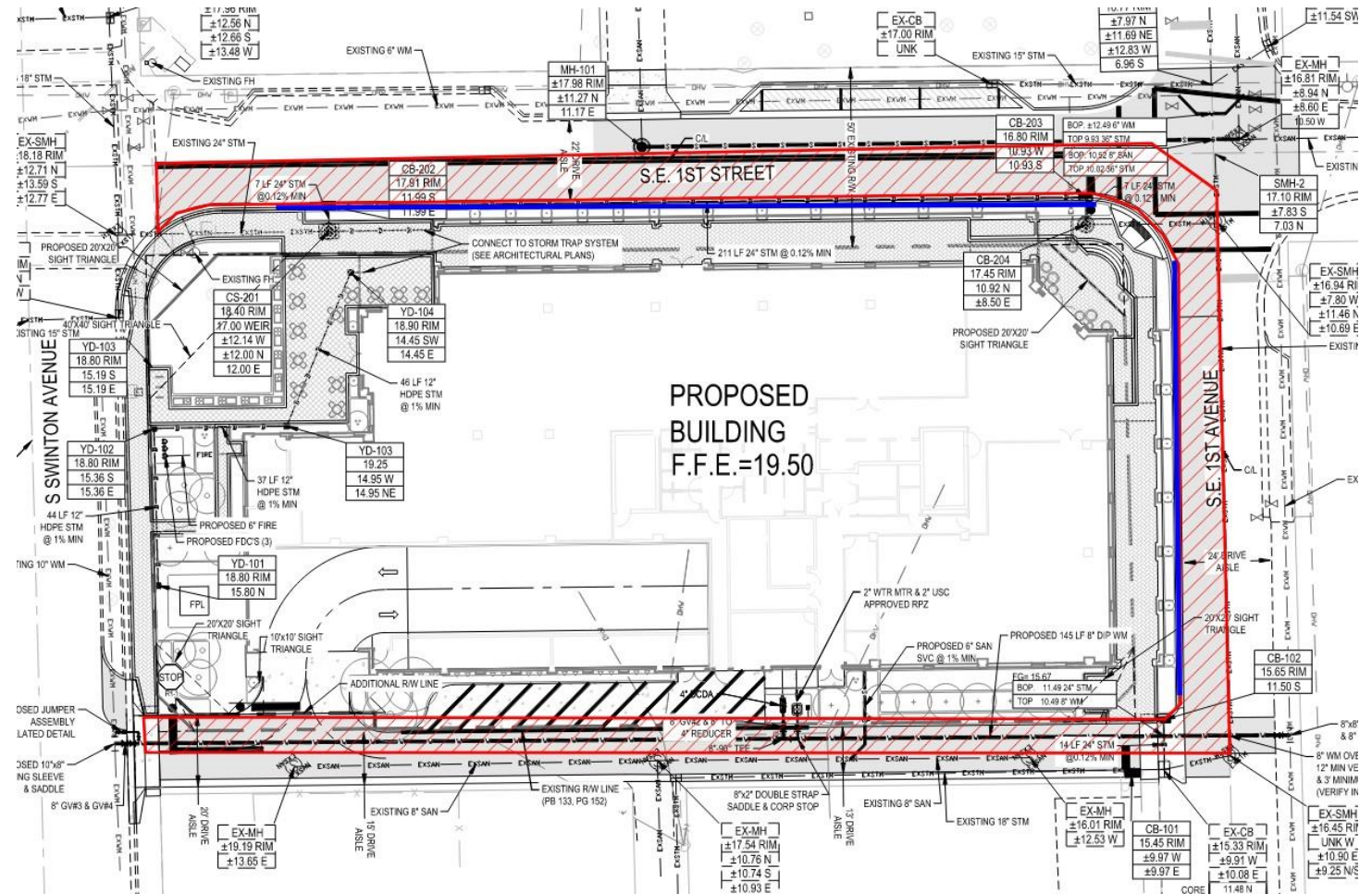
- START DATE + 17 WEEKS
- NORTH AND EAST FACADE CONSTRUCTION. CLOSURES OF EASTBOUND SE 1ST STREET AND SOUTHBOUND SE 1ST AVE AND ALLEY

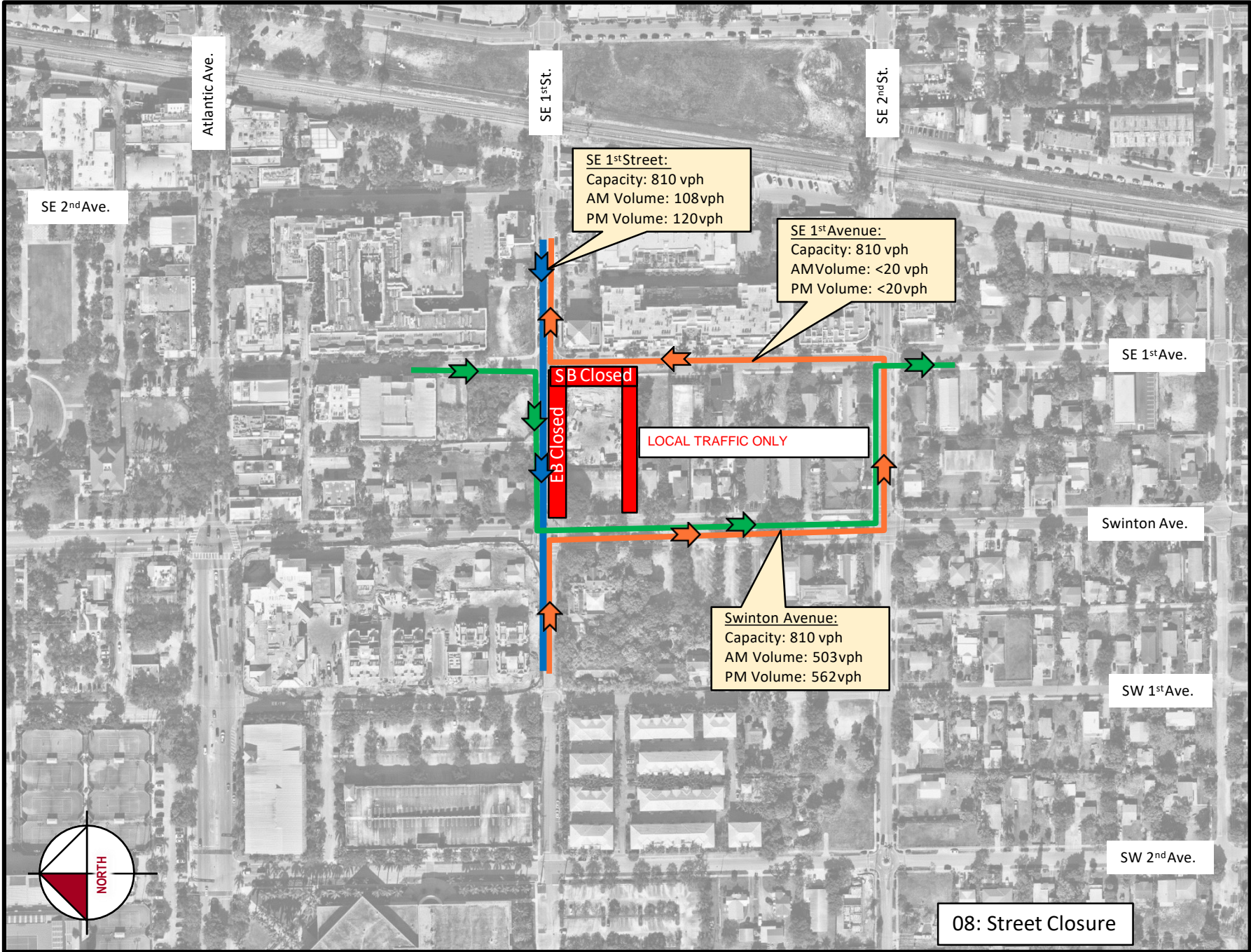




08: STREET CLOSURE

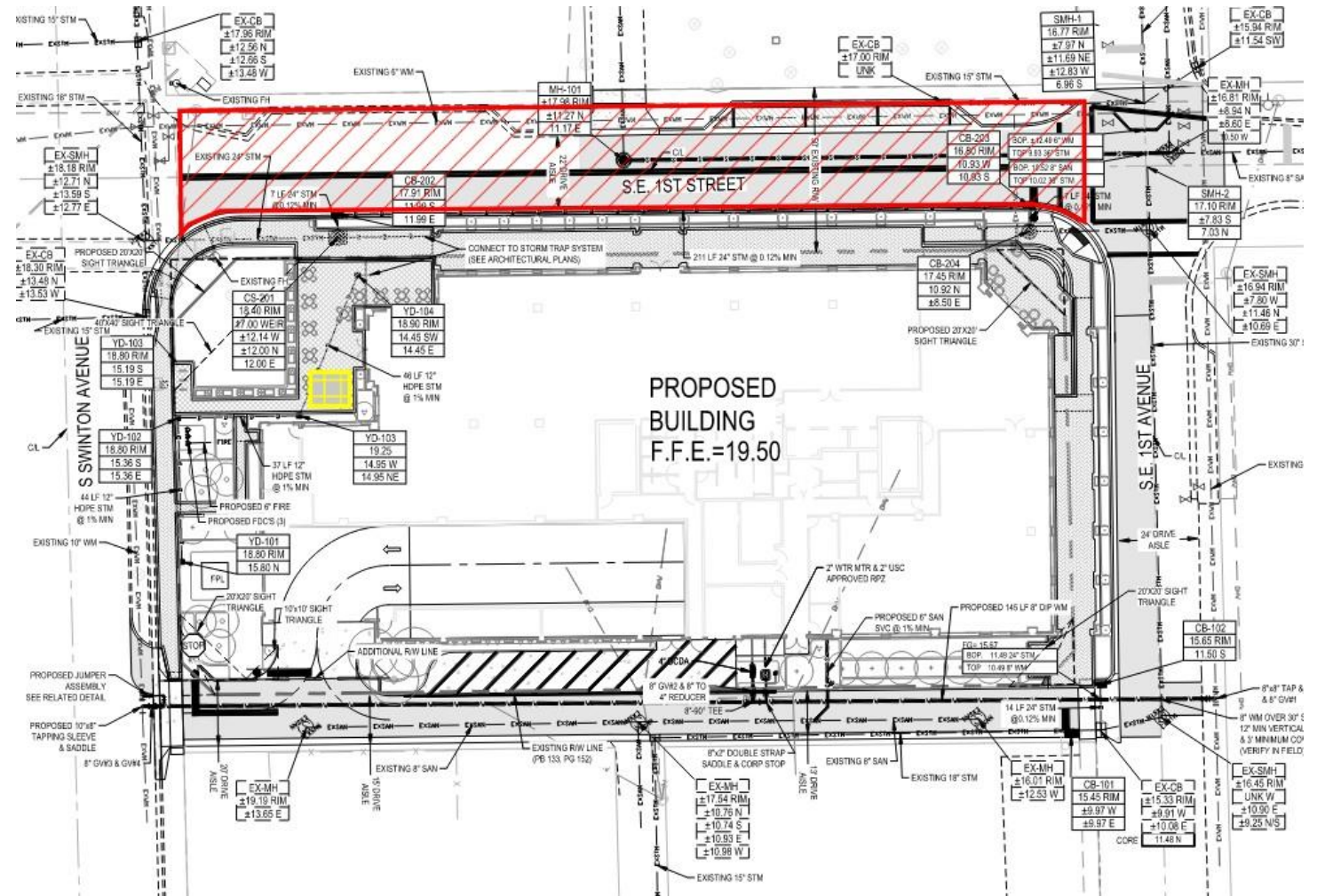
- START DATE + 1 WEEK - DAYTIME ONLY
- SHEETPILE REMOVAL ON THE NORTH AND EAST FOR ARCADE FOUNDATIONS. CLOSURES OF EASTBOUND SE 1ST STREET AND SOUTHBOUND SE 1ST AVE AND ALLEY

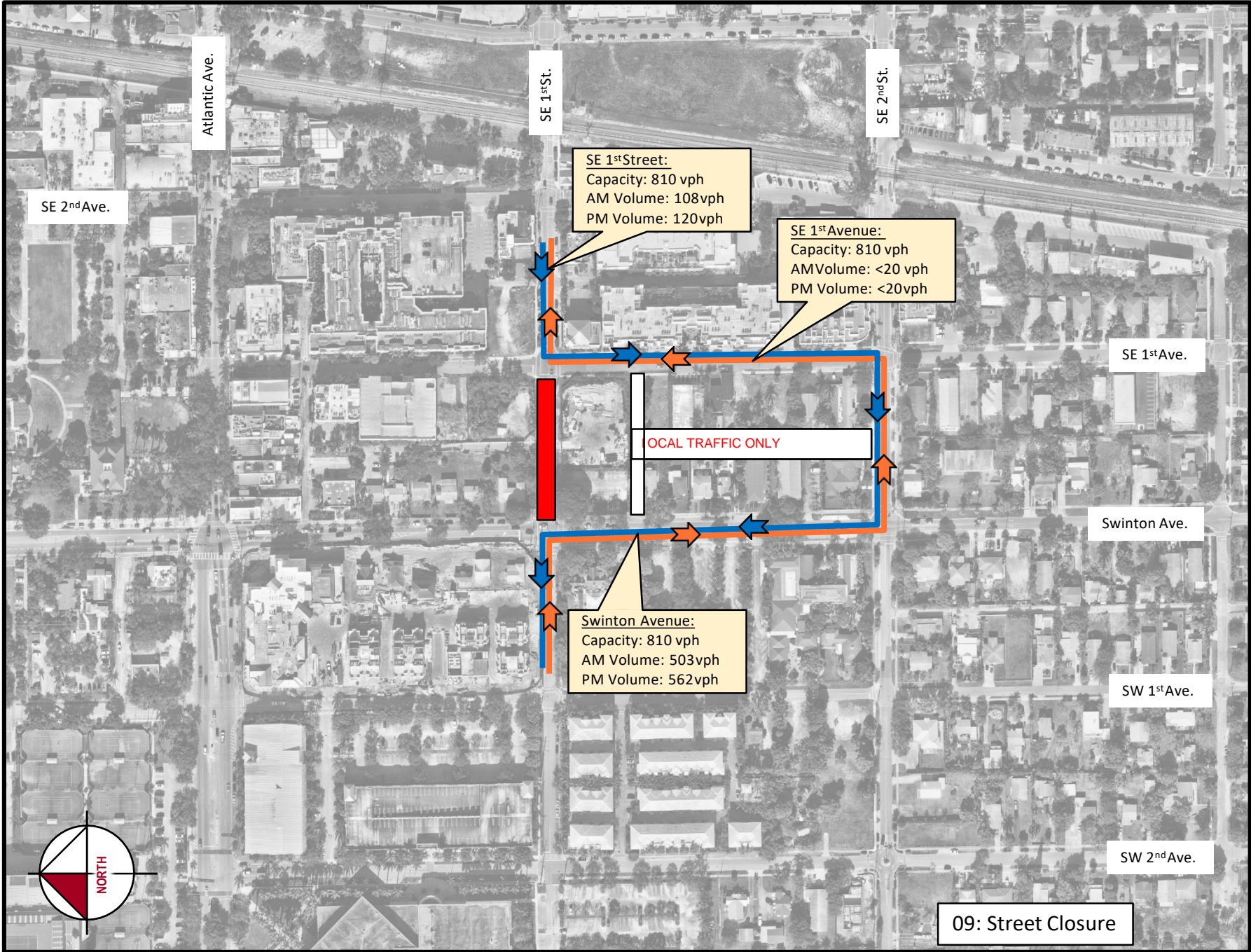




09: STREET CLOSURE

- START DATE + 1 WEEK
- DISMANTLE AND REMOVAL OF CRANE





Block 70 –SE 1st Street Terraces

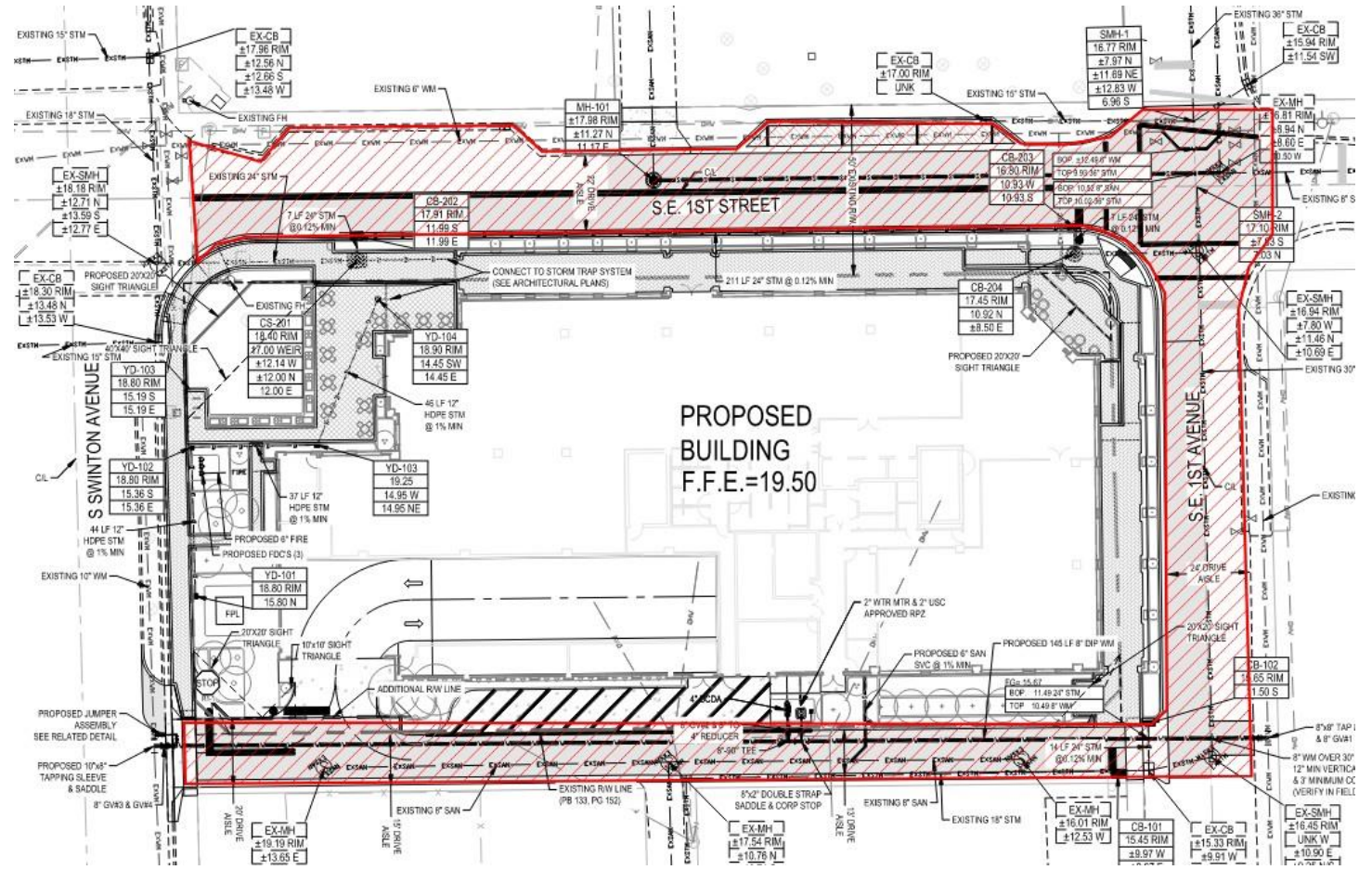


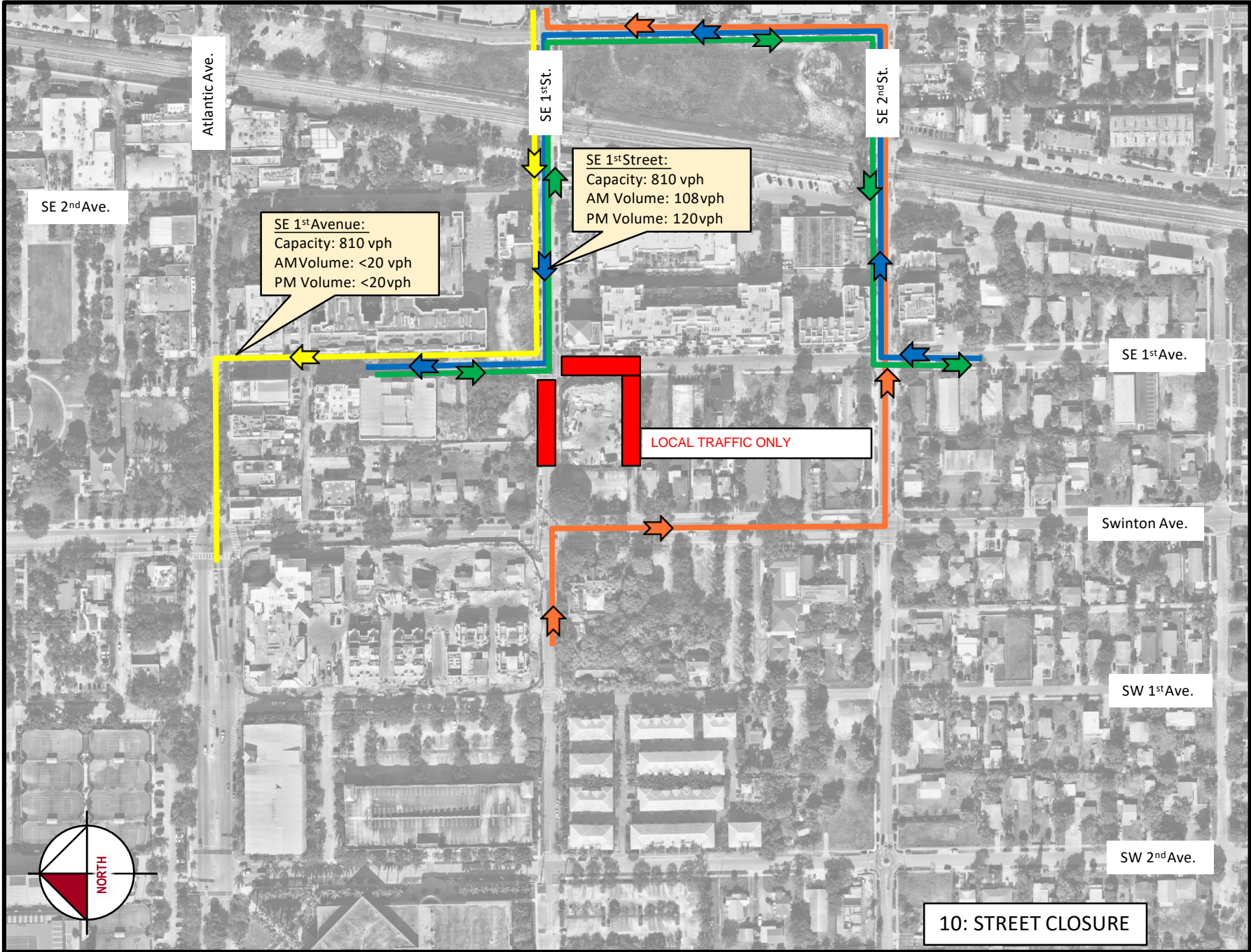
Block 70 –SE 1st Avenue Looking North



10: STREET CLOSURE

- START DATE + 3 WEEKS
- ROAD MILL & RESURFACE AND CONCRETE CURBS



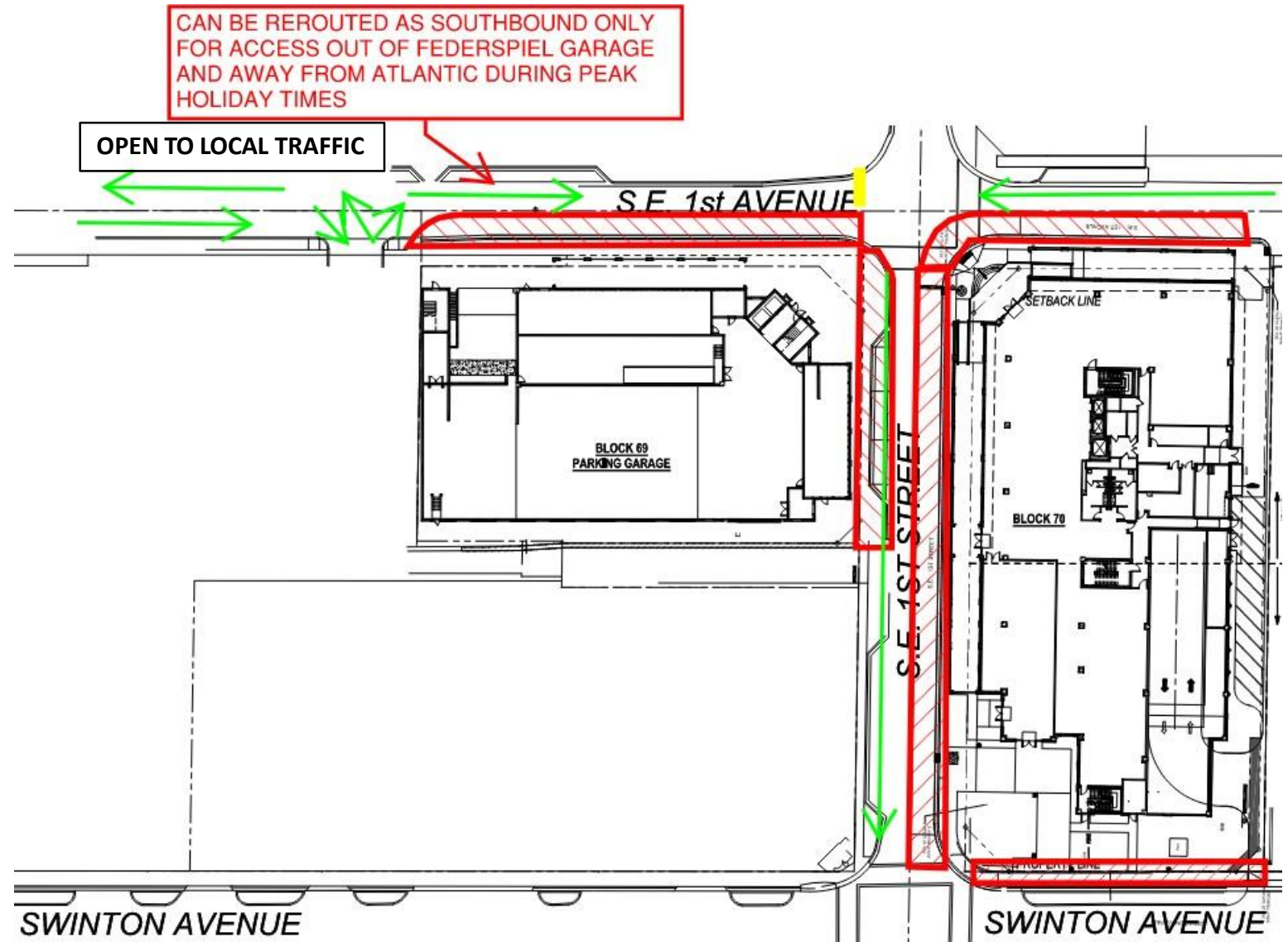


SUMMARY

- To protect the public, the following closures will be required to complete the construction of Sundy Village Block 70.
- **General Construction Access**
 - Perimeter sidewalks and South Alley
- **Underground Utility Installation in Street**
 - SE 1st Street and Intersection of 1st Street and 1st Ave
- **Sheet Pile Installation, Removal, and Exterior Façade**
 - Eastbound SE 1st Street and Southbound SE 1st Ave
- **Tower Crane Delivery and Erection**
 - SE 1st Street
- **Tower Crane Dismantle**
 - SE 1st Street
- **Asphalt Re-surfacing**
 - SE 1st Street, SE 1st Ave, and South Alley

COMPOSITE BLOCK 69-70 SE 1ST AVE CLOSURE

- START DATE + 4 MONTHS



COMPOSITE BLOCK 69-70 SE 1ST AVE CLOSURE

- START DATE + 1 MONTH DAYTIME

