

EXHIBIT B

IRRIGATION STATEMENT
 THIS PROJECT IS TO BE IRRIGATED BY AN AUTOMATED SPRINKLER SYSTEM UTILIZING A POTABLE WATER SOURCE. THE IRRIGATION SYSTEM WILL PROVIDE 100% COVERAGE OF ALL PLANTED AREAS.

PRIOR TO BRINGING ANY PLANT MATERIALS TO THE SITE, THE CONTRACTOR SHALL PROVIDE PHOTOGRAPHS OF EACH OF THE TYPES OF PLANT MATERIAL TO BE PROVIDED FOR THE APPROVAL OF THE OWNER. EACH PHOTOGRAPH SHALL BE OF A TYPICAL PLANT FROM THE SPECIFIC BLOCK OF PLANTS TO BE PROVIDED BY THE CONTRACTOR. APPROVED PHOTOGRAPHS WILL SERVE AS THE STANDARD FOR ACCEPTANCE OF OTHER PLANTS OF THE SAME SPECIES DELIVERED TO THE SITE.

ALL QUANTITIES ARE FOR THE USE OF THE CITY OF DELRAY BEACH ONLY. THE CONTRACTOR SHALL CHECK AND VERIFY ALL PLANT QUANTITIES PRIOR TO ORDERING. PLANT QUANTITIES ON THE PLANTING PLAN SHALL TAKE PRECEDENCE OVER THE QUANTITIES INDICATED ON THE PLANT LIST.

PLANT LIST

KEY	APPROX. QUANTITY	DESCRIPTION	HEIGHT	SPREAD	SPACING	COMMENTS
TR01	1	COCCONIA QUINQUEFIDA (PINK PALM)	18"	7' X 7'		SMALL TRUNK, IF ONE OF SEVERAL TRUNKS, COARSE GRASS
TR02	4	LAKE CHARLES (DAY PALM)	18"	7' X 7'		SMALL TRUNK, IF ONE OF SEVERAL TRUNKS, COARSE GRASS
TR03	1	LAKE CHARLES (DAY PALM)	18"	7' X 7'		3 TRUNKS, 10' TALL, 10' DIA. SPACING, FLORIDA FRUIT
TR04	4	LAKE CHARLES (DAY PALM)	18"	7' X 7'		3 TRUNKS, 10' TALL, 10' DIA. SPACING, FLORIDA FRUIT
TR05	1	LAKE CHARLES (DAY PALM)	18"	7' X 7'		ROOT PALM, SPACING, ACCENT, 10' TALL, 10' DIA. SPACING, FLORIDA FRUIT
TR06	2	LAKE CHARLES (DAY PALM)	18"	7' X 7'		SMALL TRUNKED PALM, FLORIDA FRUIT, SPACING, 10' TALL, 10' DIA. SPACING, FLORIDA FRUIT
GR01	4	COCCONIA QUINQUEFIDA (PINK PALM)	36"	18" X 18" @ 0'		3 GAL. MIN. PAIL TO GROUND
GR02	28	COCCONIA QUINQUEFIDA (PINK PALM)	36"	30" X 30" @ 0'		10 GAL. MIN. PAIL TO GROUND
GR03	136	COCCONIA QUINQUEFIDA (PINK PALM)	36"	18" X 18" @ 0'		3 GAL. MIN. PAIL TO GROUND, 20' TYPED WALKWAY (SEE)
GR04	43	COCCONIA QUINQUEFIDA (PINK PALM)	36"	18" X 18" @ 0'		3 GAL. MIN. PAIL TO GROUND
GR05	8	COCCONIA QUINQUEFIDA (PINK PALM)	36"	30" X 30" @ 0'		3 GAL. MIN. PAIL TO GROUND, FLORIDA FRUIT
GR06	2	COCCONIA QUINQUEFIDA (PINK PALM)	36"	18" X 18" @ 0'		3 GAL. MIN. PAIL TO GROUND, FLORIDA FRUIT
GR07	2	COCCONIA QUINQUEFIDA (PINK PALM)	36"	18" X 18" @ 0'		3 GAL. MIN. PAIL TO GROUND
GR08	18	COCCONIA QUINQUEFIDA (PINK PALM)	18"	18" X 18" @ 0'		3 GAL. MIN. PAIL TO GROUND, FLORIDA FRUIT
GR09	21	COCCONIA QUINQUEFIDA (PINK PALM)	18"	18" X 18" @ 0'		3 GAL. MIN. PAIL TO GROUND, FLORIDA FRUIT
GR10	18	COCCONIA QUINQUEFIDA (PINK PALM)	18"	18" X 18" @ 0'		3 GAL. MIN. PAIL TO GROUND, FLORIDA FRUIT
GR11	81	COCCONIA QUINQUEFIDA (PINK PALM)	18"	18" X 18" @ 0'		3 GAL. MIN. PAIL TO GROUND, FLORIDA FRUIT
GR12	27	COCCONIA QUINQUEFIDA (PINK PALM)	18"	18" X 18" @ 0'		3 GAL. MIN. PAIL TO GROUND, FLORIDA FRUIT
GR13	44	COCCONIA QUINQUEFIDA (PINK PALM)	36"	30" X 30" @ 0'		3 GAL. MIN. PAIL TO GROUND, FLORIDA FRUIT
GR14	8	COCCONIA QUINQUEFIDA (PINK PALM)	18"	18" X 18" @ 0'		3 GAL. MIN. PAIL TO GROUND, FLORIDA FRUIT
GR15	8	COCCONIA QUINQUEFIDA (PINK PALM)	18"	18" X 18" @ 0'		3 GAL. MIN. PAIL TO GROUND, FLORIDA FRUIT

PARTIAL LIST OF IRRIGATION ITEMS

IRRI-001	IRRI-002	IRRI-003	IRRI-004
SELECTION OF PIPES, JOINTS, COUPLERS, VALVES, ETC.	SELECTION OF PIPES, JOINTS, COUPLERS, VALVES, ETC.	SELECTION OF PIPES, JOINTS, COUPLERS, VALVES, ETC.	SELECTION OF PIPES, JOINTS, COUPLERS, VALVES, ETC.
SELECTION OF PIPES, JOINTS, COUPLERS, VALVES, ETC.	SELECTION OF PIPES, JOINTS, COUPLERS, VALVES, ETC.	SELECTION OF PIPES, JOINTS, COUPLERS, VALVES, ETC.	SELECTION OF PIPES, JOINTS, COUPLERS, VALVES, ETC.
SELECTION OF PIPES, JOINTS, COUPLERS, VALVES, ETC.	SELECTION OF PIPES, JOINTS, COUPLERS, VALVES, ETC.	SELECTION OF PIPES, JOINTS, COUPLERS, VALVES, ETC.	SELECTION OF PIPES, JOINTS, COUPLERS, VALVES, ETC.

LANDSCAPE NOTES

- ALL PLANT MATERIALS SHALL BE FLORIDA GROWN AND BE EITHER UNLINED OR DOUBLE TRUNKED.
- ALL PLANTING SHALL BE TO BE DONE WITH A 1" THICK LAYER OF REFINED SAND UNDER EACH PLANTING.
- ALL PLANTING SHALL BE DONE WITH A 1" THICK LAYER OF REFINED SAND UNDER EACH PLANTING.
- ALL PLANT MATERIALS SHALL BE DELIVERED TO THE SITE WITH A 1" THICK LAYER OF REFINED SAND UNDER EACH PLANTING.
- THE CONTRACTOR SHALL BE RESPONSIBLE FOR THE PROTECTION OF ALL EXISTING UTILITIES AND STRUCTURES AND SHALL BE RESPONSIBLE FOR THE PROTECTION OF ALL EXISTING UTILITIES AND STRUCTURES.
- THE CONTRACTOR SHALL BE RESPONSIBLE FOR THE PROTECTION OF ALL EXISTING UTILITIES AND STRUCTURES AND SHALL BE RESPONSIBLE FOR THE PROTECTION OF ALL EXISTING UTILITIES AND STRUCTURES.
- THE CONTRACTOR SHALL BE RESPONSIBLE FOR THE PROTECTION OF ALL EXISTING UTILITIES AND STRUCTURES AND SHALL BE RESPONSIBLE FOR THE PROTECTION OF ALL EXISTING UTILITIES AND STRUCTURES.
- THE CONTRACTOR SHALL BE RESPONSIBLE FOR THE PROTECTION OF ALL EXISTING UTILITIES AND STRUCTURES AND SHALL BE RESPONSIBLE FOR THE PROTECTION OF ALL EXISTING UTILITIES AND STRUCTURES.

NOTE: ANY TREES OR SHRUBS PLACED WITHIN WATER, SEWER OR DRAINAGE EASEMENTS SHALL CONFORM TO THE CITY OF DELRAY BEACH STANDARD DETAILS 4(L-2 AND 5/L-2.

TREE RELOCATION AND PRESERVATION NOTES

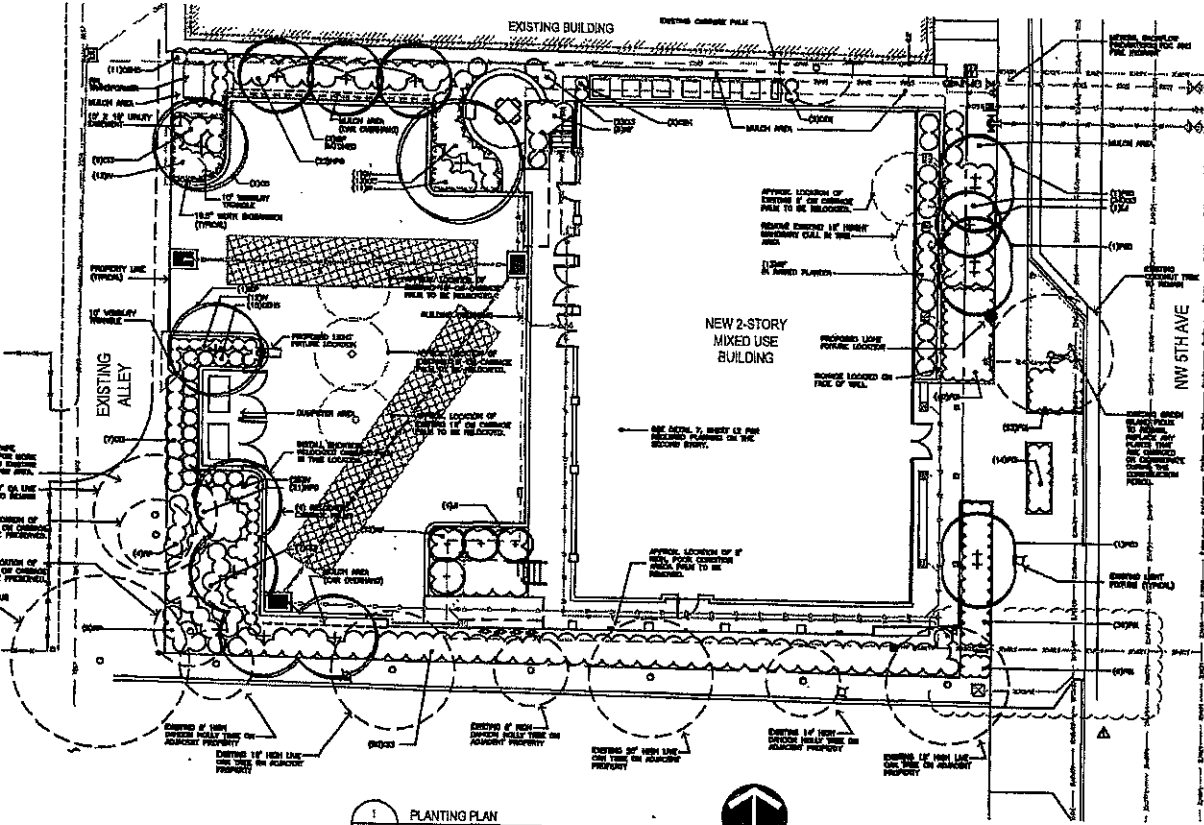
- ALL TREES TO BE RELOCATED SHALL BE PROTECTED BY A TREE PROTECTION SYSTEM (TPS) AND SHALL BE RELOCATED WITHIN 180 DAYS OF THE DATE OF THE PERMIT.
- ALL TREES TO BE RELOCATED SHALL BE PROTECTED BY A TREE PROTECTION SYSTEM (TPS) AND SHALL BE RELOCATED WITHIN 180 DAYS OF THE DATE OF THE PERMIT.
- ALL TREES TO BE RELOCATED SHALL BE PROTECTED BY A TREE PROTECTION SYSTEM (TPS) AND SHALL BE RELOCATED WITHIN 180 DAYS OF THE DATE OF THE PERMIT.
- ALL TREES TO BE RELOCATED SHALL BE PROTECTED BY A TREE PROTECTION SYSTEM (TPS) AND SHALL BE RELOCATED WITHIN 180 DAYS OF THE DATE OF THE PERMIT.

LANDSCAPE DATA

TOTAL PLANTING AREA - 2,747 SQ. FT.
TOTAL PLANTING AREA - 2,747 SQ. FT.
TOTAL PLANTING AREA - 2,747 SQ. FT.

XERISCAPE CALCULATIONS

XERISCAPE CALCULATIONS
XERISCAPE CALCULATIONS
XERISCAPE CALCULATIONS



1 PLANTING PLAN
 SCALE 1" = 10'-0"



COLONIE & Associates, Inc.
 AIA 0008489
 180 54TH STREET
 WEST PALM BEACH
 FLORIDA 33407
 (561) 833-9747

DELRAY BEACH HOUSING AUTHORITY
 82 N.W. 5TH AVENUE
 THE WEST BETHLETS OFFICE BUILDING
 DELRAY BEACH FLORIDA
 PROJECT NO. 20000

REVISIONS
 01/15
 01/15
 01/15

DESIGNED BY
 RCS

CHECKED BY
 RCS

DATE
 01/15

SCALE
 1" = 10'-0"