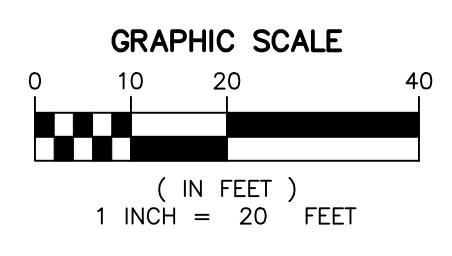
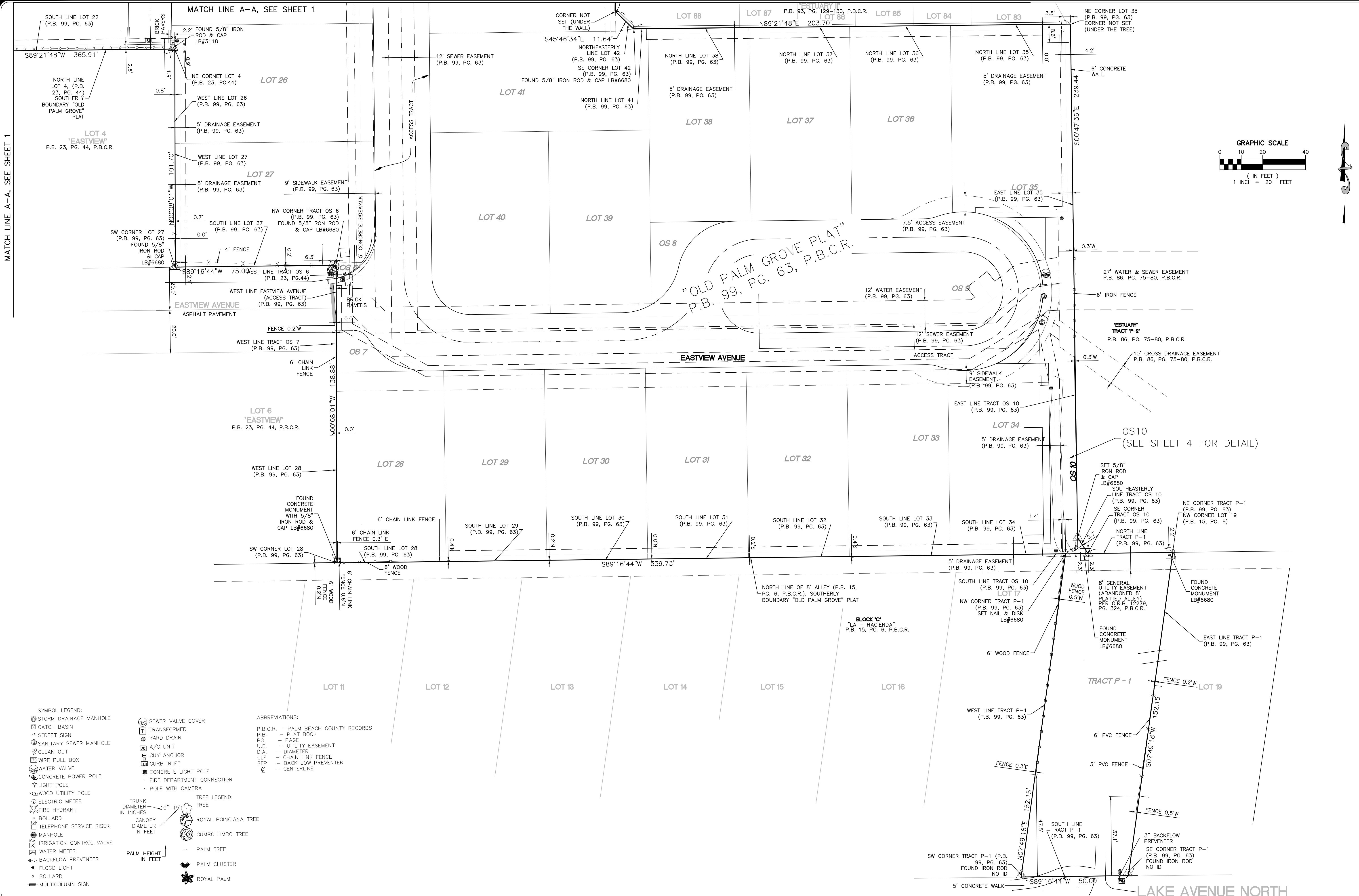


MATCH LINE A-A, SEE SHEET 1



SKETCH OF BOUNDARY & TOPOGRAPHIC SURVEY

- SYMBOL LEGEND:**
- STORM DRAINAGE MANHOLE
 - CATCH BASIN
 - STREET SIGN
 - SANITARY SEWER MANHOLE
 - CLEAN OUT
 - WIRE PULL BOX
 - WATER VALVE
 - CONCRETE POWER POLE
 - LIGHT POLE
 - WOOD UTILITY POLE
 - ELECTRIC METER
 - FIRE HYDRANT
 - BOLLARD
 - TELEPHONE SERVICE RISER
 - MANHOLE
 - IRRIGATION CONTROL VALVE
 - WATER METER
 - BACKFLOW PREVENTER
 - FLOOD LIGHT
 - BOLLARD
 - MULTICOLUMN SIGN
- SEWER VALVE COVER**
- TRANSFORMER
 - YARD DRAIN
 - A/C UNIT
 - GUY ANCHOR
 - CURB INLET
 - CONCRETE LIGHT POLE
 - FIRE DEPARTMENT CONNECTION
 - POLE WITH CAMERA
- TREE LEGEND:**
- TREE
 - ROYAL POINCIANA TREE
 - GUMBO LIMBO TREE
 - PALM TREE
 - PALM CLUSTER
 - ROYAL PALM
- ABBREVIATIONS:**
- P.B.C.R. - PALM BEACH COUNTY RECORDS
 - P.B. - PLAT BOOK
 - P.C. - PAGE
 - U.E. - UTILITY EASEMENT
 - DIA. - DIAMETER
 - CLF - CHAIN LINK FENCE
 - BFP - BACKFLOW PREVENTER
 - C - CENTERLINE
- PALM HEIGHT IN FEET**

OLD PALM GROVE

CITY OF DELRAY BEACH, PALM BEACH COUNTY, FLORIDA

I HEREBY CERTIFY THAT THIS SURVEY MEETS STANDARDS OF PRACTICE AS SET FORTH BY THE FLORIDA DEPARTMENT OF AGRICULTURE AND CONSUMER SERVICES OF PROFESSIONAL SURVEYORS IN P. AND MAPPERS IN CHAPTER 5J-17, FLORIDA ADMIN. CODE, PURSUANT TO SECTION 472.027, FLORIDA STATUTES, DATED THIS 28th DAY OF MARCH, 2024.

Martin P. Rossi
MARTIN P. ROSSI
PROFESSIONAL SURVEYOR AND MAPPER
STATE OF FLORIDA REGISTRATION NO. 5857

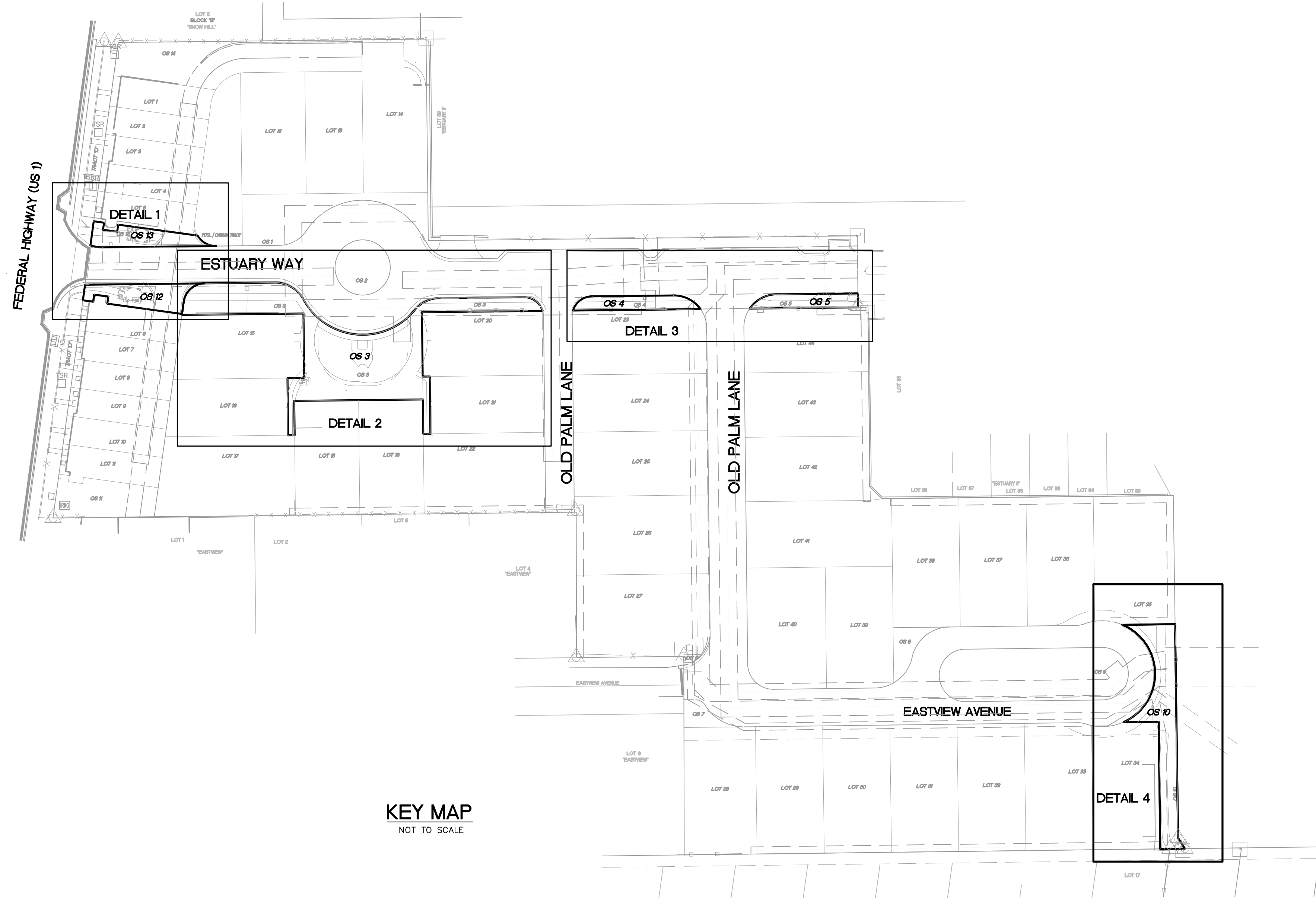
NOT VALID WITHOUT THE SIGNATURE AND THE RAISED SEAL OF A FLORIDA LICENSED SURVEYOR AND MAPPER.

MILLER LEGG

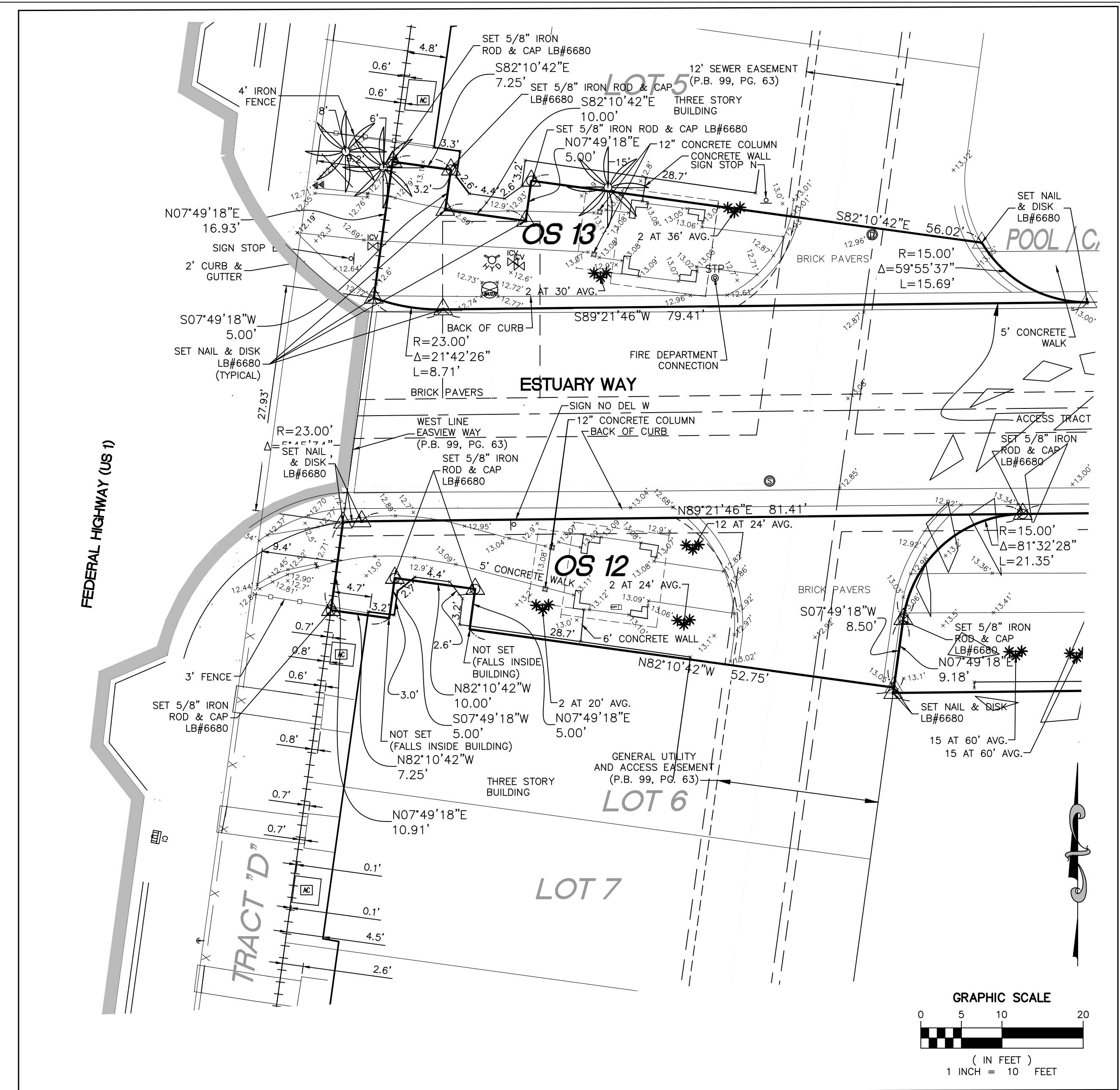
South Florida Office: 13680 NW 5th Street, Suite 200
Sunrise, Florida 33325
954-436-7000
www.millerlegg.com

CERTIFICATE OF AUTHORIZATION	
LP	MR
DES.	CHK.
PROJECT / FILE NO.	
22-00027	
DRAWING NO.	
SH-2	
DATE DRAWN:	3/7/24
SCALE:	1" = 20'
6	

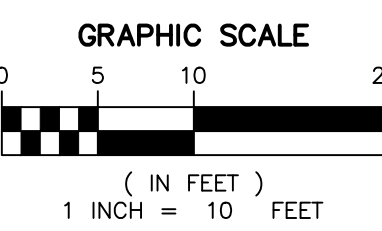
VA\PROJECTS\2022\22-00027 - OLD PALM GROVE PLAT PERIMETER BOUNDARY SURVEY\DRAWINGS\22-00027_ETS_PARCELINGS_4/7/24 BY DRODOLSK



KEY MAP
NOT TO SCALE



DETAIL 1



DESCRIPTION:

ALL OF TRACTS OS3, OS4, OS5, OS10, OS12 AND OS13 OF "OLD PALM GROVE PLAT" ACCORDING TO THE PLAT THEREOF AS RECORDED IN PLAT BOOK 99, PAGE 63 OF THE PUBLIC RECORDS OF PALM BEACH COUNTY, FLORIDA.

AREA TABULATION CHART		
PARCEL NAME	AREA IN SQUARE FEET ±	AREA IN ACRES ±
OS 3	7363.930	0.169
OS 4	779.660	0.018
OS 5	684.650	0.016
OS 10	2536.700	0.058
OS 12	1119.980	0.026
OS 13	931.650	0.021

- SYMBOL LEGEND:
- ⊗ STORM DRAINAGE MANHOLE
 - ⊠ CATCH BASIN
 - ⊙ STREET SIGN
 - ⊕ SANITARY SEWER MANHOLE
 - ⊖ CLEAN OUT
 - ⊗ WIRE PULL BOX
 - ⊘ WATER VALVE
 - ⊙ CONCRETE POWER POLE
 - ⊙ LIGHT POLE
 - ⊙ WOOD UTILITY POLE
 - ⊙ ELECTRIC METER
 - ⊙ FIRE HYDRANT
 - ⊙ BOLLARD
 - ⊙ TELEPHONE SERVICE RISER
 - ⊙ MANHOLE
 - ⊙ IRRIGATION CONTROL VALVE
 - ⊙ WATER METER
 - ⊙ BACKFLOW PREVENTER
 - ⊙ FLOOD LIGHT
 - ⊙ BOLLARD
 - ⊙ MULTICOLUMN SIGN
- ABBREVIATIONS:
- P.B.C.R. - PALM BEACH COUNTY RECORDS
 - P.B. - PLAT BOOK
 - PG. - PAGE
 - U.E. - UTILITY EASEMENT
 - DIA. - DIAMETER
 - CLF - CHAIN LINK FENCE
 - BFP - BACKFLOW PREVENTER
 - CL - CENTERLINE
- TREE LEGEND:
- ⊙ TREE
 - ⊙ ROYAL POINCIANA TREE
 - ⊙ GUMBO LIMBO TREE
 - ⊙ PALM TREE
 - ⊙ PALM CLUSTER
 - ⊙ ROYAL PALM

VA PROJECTS\2021\22-00027 - OLD PALM GROVE PLAT PERMETER BOUNDARY SURVEY\DRAWINGS\22-00027_L1TS_PARELLELS 4/7/24 BY DRODOLSK

SKETCH OF BOUNDARY & TOPOGRAPHIC SURVEY

OLD PALM GROVE

CITY OF DELRAY BEACH, PALM BEACH COUNTY, FLORIDA

I HEREBY CERTIFY THAT THIS SURVEY MEETS STANDARDS OF PRACTICE AS SET FORTH BY THE FLORIDA DEPARTMENT OF AGRICULTURE, FORESTRY AND CONSUMER SERVICES OF PROFESSIONAL SURVEYORS AND MAPPERS IN CHAPTER 5J-17, FLORIDA ADMINIS... PURSUANT TO SECTION 472.027, FLORIDA STATUTES, DATED THIS 28th DAY OF MARCH, 2024. A.D.

Martin P. Rossi
MARTIN P. ROSSI
PROFESSIONAL SURVEYOR AND MAPPER
STATE OF FLORIDA REGISTRATION No. 5857

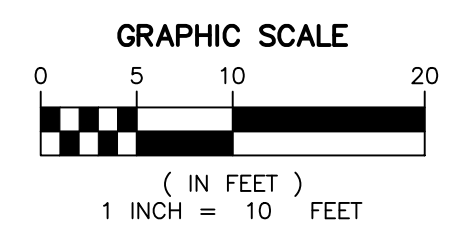
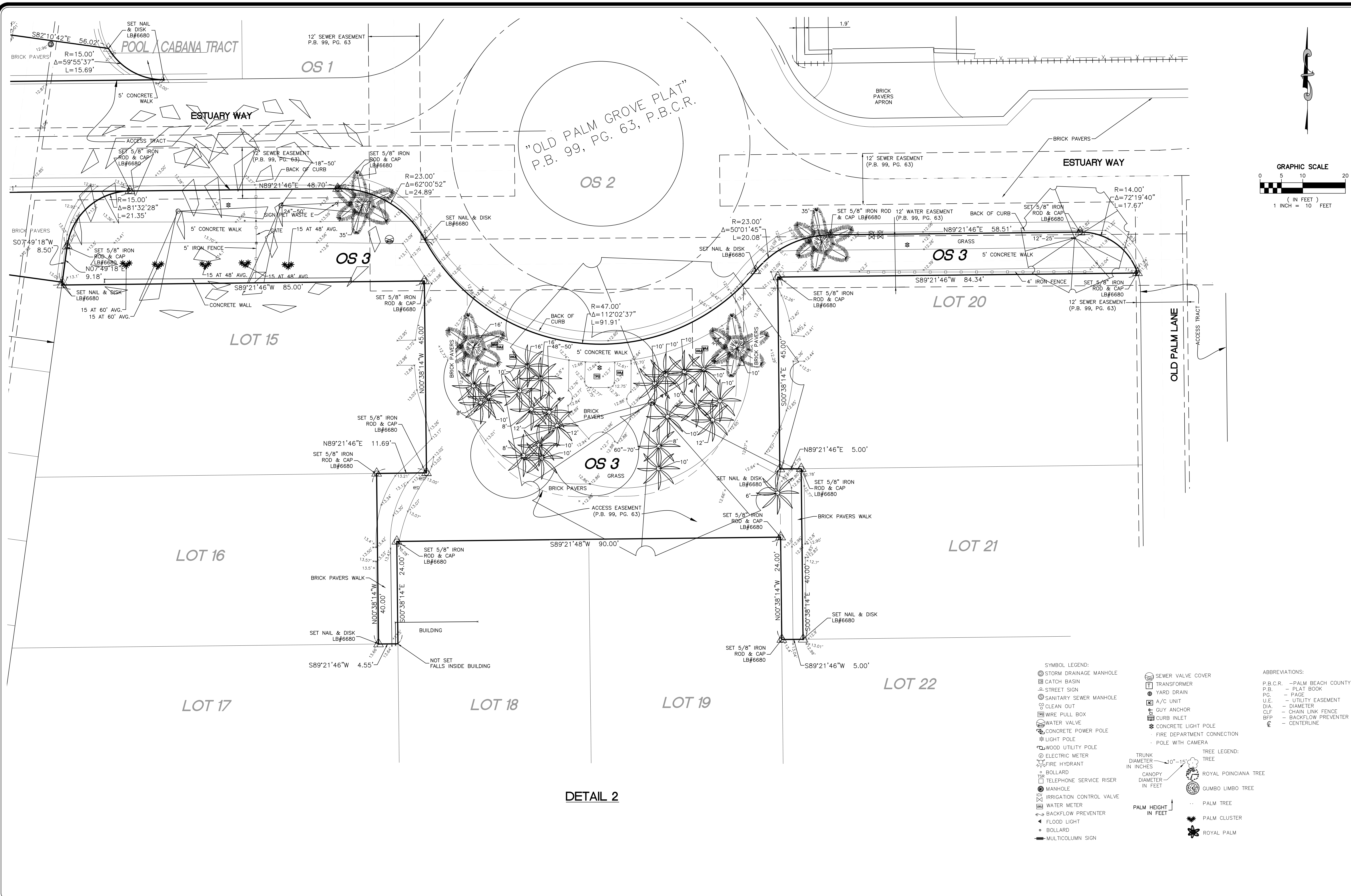
NOT VALID WITHOUT THE SIGNATURE AND THE ORIGINAL RAISED SEAL OF A FLORIDA LICENSED SURVEYOR AND MAPPER

MILLER LEGG

South Florida Office: 13680 NW 5th Street, Suite 200
Sunrise, Florida · 33325
954-436-7000
www.millerlegg.com

CERTIFICATE OF AUTHORIZATION	
LB6680	
LP	MR
DES.	CHK.
PROJECT / FILE NO.	
22-00027	
DRAWING NO.	
SH-3	
DATE DRAWN:	DATE CHECKED:
3/12/24	3
6	

V:\PROJECTS\2022\22-0007 - OLD PALM GROVE PLAT PERIMETER BOUNDARY SURVEY\DRAWINGS\22-0007_BTS_PARELLELS 4/7/24 BY UDODSK



DETAIL 2

- SYMBOL LEGEND:**
- ⊕ STORM DRAINAGE MANHOLE
 - ⊕ CATCH BASIN
 - ⊕ STREET SIGN
 - ⊕ SANITARY SEWER MANHOLE
 - ⊕ CLEAN OUT
 - ⊕ WIRE PULL BOX
 - ⊕ WATER VALVE
 - ⊕ CONCRETE POWER POLE
 - ⊕ LIGHT POLE
 - ⊕ WOOD UTILITY POLE
 - ⊕ ELECTRIC METER
 - ⊕ FIRE HYDRANT
 - ⊕ BOLLARD
 - ⊕ TELEPHONE SERVICE RISER
 - ⊕ MANHOLE
 - ⊕ IRRIGATION CONTROL VALVE
 - ⊕ WATER METER
 - ⊕ BACKFLOW PREVENTER
 - ⊕ FLOOD LIGHT
 - ⊕ BOLLARD
 - ⊕ MULTICOLUMN SIGN
- ABBREVIATIONS:**
- P.B.C.R. - PALM BEACH COUNTY RECORDS
 - P.B. - PLAT BOOK
 - P.C. - PAGE
 - U.E. - UTILITY EASEMENT
 - DIA. - DIAMETER
 - CLF - CHAIN LINK FENCE
 - BFP - BACKFLOW PREVENTER
 - ℄ - CENTERLINE
- TREE LEGEND:**
- TRUNK DIAMETER IN INCHES
 - CANOPY DIAMETER IN FEET
 - ROYAL POINCIANA TREE
 - GUMBO LIMBO TREE
 - PALM TREE
 - PALM CLUSTER
 - ROYAL PALM

SKETCH OF BOUNDARY & TOPOGRAPHIC SURVEY

OLD PALM GROVE

CITY OF DELRAY BEACH, PALM BEACH COUNTY, FLORIDA

HEREBY CERTIFY THAT THIS SURVEY MEETS STANDARDS OF PRACTICE AS SET FORTH BY THE FLORIDA DEPARTMENT OF AGRICULTURE AND CONSUMER SERVICES OF PROFESSIONAL SURVEYORS AND MAPPERS IN CHAPTER 5J-17, FLORIDA ADMINIS... PURSUANT TO SECTION 472.027, FLORIDA STATUTES... DATED THIS 28th DAY OF MARCH, 2024. A.D.

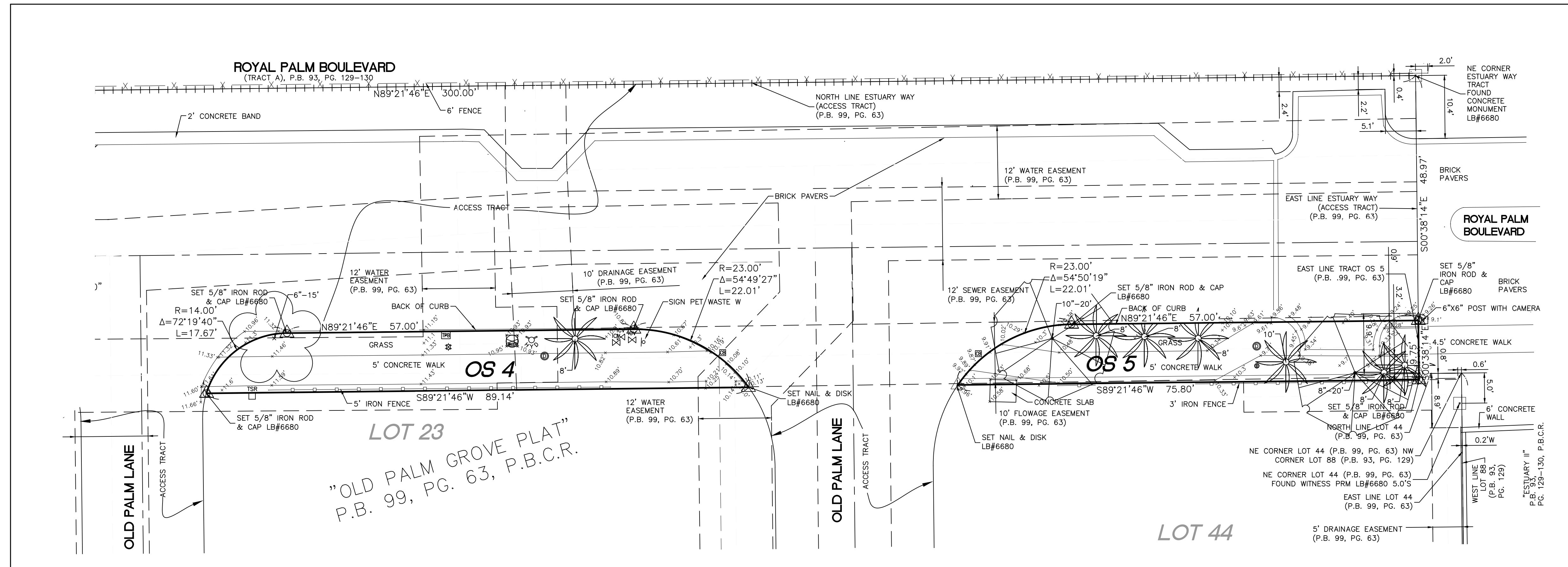
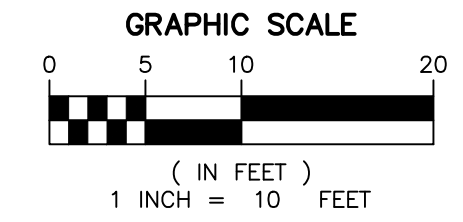
Martin P. Rossi
MARTIN P. ROSSI
PROFESSIONAL SURVEYOR AND MAPPER
STATE OF FLORIDA REGISTRATION No. 5857

NOT VALID WITHOUT THE SIGNATURE AND THE ORIGINAL RAISED SEAL OF A FLORIDA LICENSED SURVEYOR AND MAPPER

MILLER LEGG

South Florida Office: 13680 NW 5th Street, Suite 200
Sunrise, Florida 33325
954-436-7000
www.millerlegg.com

CERTIFICATE OF AUTHORIZATION	
LB6680	
DES.	MR
CHK.	CHK.
PROJECT / FILE NO.	
22-00027	
DRAWING NO.	
SH-4	
DATE DRAWN	
3/12/24	
SHEET	
4 OF 6	



DETAIL 3

- SYMBOL LEGEND:
- ☉ STORM DRAINAGE MANHOLE
 - ☐ CATCH BASIN
 - △ STREET SIGN
 - ⊙ SANITARY SEWER MANHOLE
 - CLEAN OUT
 - ☒ WIRE PULL BOX
 - ⊕ WATER VALVE
 - ⊕ CONCRETE POWER POLE
 - ⊕ LIGHT POLE
 - ⊕ WOOD UTILITY POLE
 - ⊕ ELECTRIC METER
 - ⊕ FIRE HYDRANT
 - ⊕ BOLLARD
 - ⊕ TELEPHONE SERVICE RISER
 - ⊕ MANHOLE
 - ⊕ IRRIGATION CONTROL VALVE
 - ⊕ WATER METER
 - ⊕ BACKFLOW PREVENTER
 - ⊕ FLOOD LIGHT
 - ⊕ BOLLARD
 - ⊕ MULTICOLUMN SIGN
- SEWER VALVE COVER
- ☐ TRANSFORMER
 - ⊕ YARD DRAIN
 - ⊕ A/C UNIT
 - ⊕ GUY ANCHOR
 - ⊕ CURB INLET
 - ⊕ CONCRETE LIGHT POLE
 - ⊕ FIRE DEPARTMENT CONNECTION
 - ⊕ POLE WITH CAMERA
- ABBREVIATIONS:
- P.B.C.R. - PALM BEACH COUNTY RECORDS
 - P.B. - PLAT BOOK
 - PG. - PAGE
 - U.E. - UTILITY EASEMENT
 - DIA. - DIAMETER
 - CLF - CHAIN LINK FENCE
 - BFP - BACKFLOW PREVENTER
 - CL - CENTERLINE
- TREE LEGEND:
- TREE
 - ROYAL POINCIANA TREE
 - GUMBO LIMBO TREE
 - PALM TREE
 - PALM CLUSTER
 - ROYAL PALM

V:\PROJECTS\2022\22-00027 - OLD PALM GROVE PLAT PERIMETER BOUNDARY SURVEY\DRAWINGS\22-00027_BTS_PARCEL\DWG 4/2/24 BY UD00LSK

NO.	DATE	REVISIONS	DES.	CHK.	NO.	DATE	REVISIONS	DES.	CHK.

OLD PALM GROVE

CITY OF DELRAY BEACH, PALM BEACH COUNTY, FLORIDA

I HEREBY CERTIFY THAT THIS SURVEY MEETS STANDARDS OF PRACTICE AS SET FORTH BY THE FLORIDA DEPARTMENT OF AGRICULTURE, FORESTRY AND CONSUMER SERVICES OF PROFESSIONAL SURVEYORS AND MAPPERS IN CHAPTER 5J-17, FLORIDA ADMINISTRATIVE CODE, AND PURSUANT TO SECTION 472.027, FLORIDA STATUTES, DATED THIS 28th DAY OF MARCH, 2024. A.D.

Martin P. Rossi

MARTIN P. ROSSI
PROFESSIONAL SURVEYOR AND MAPPER
STATE OF FLORIDA REGISTRATION No. 5857

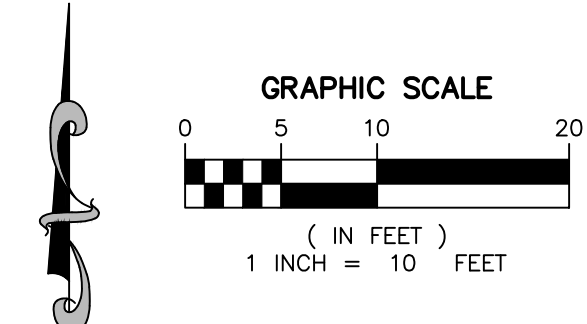
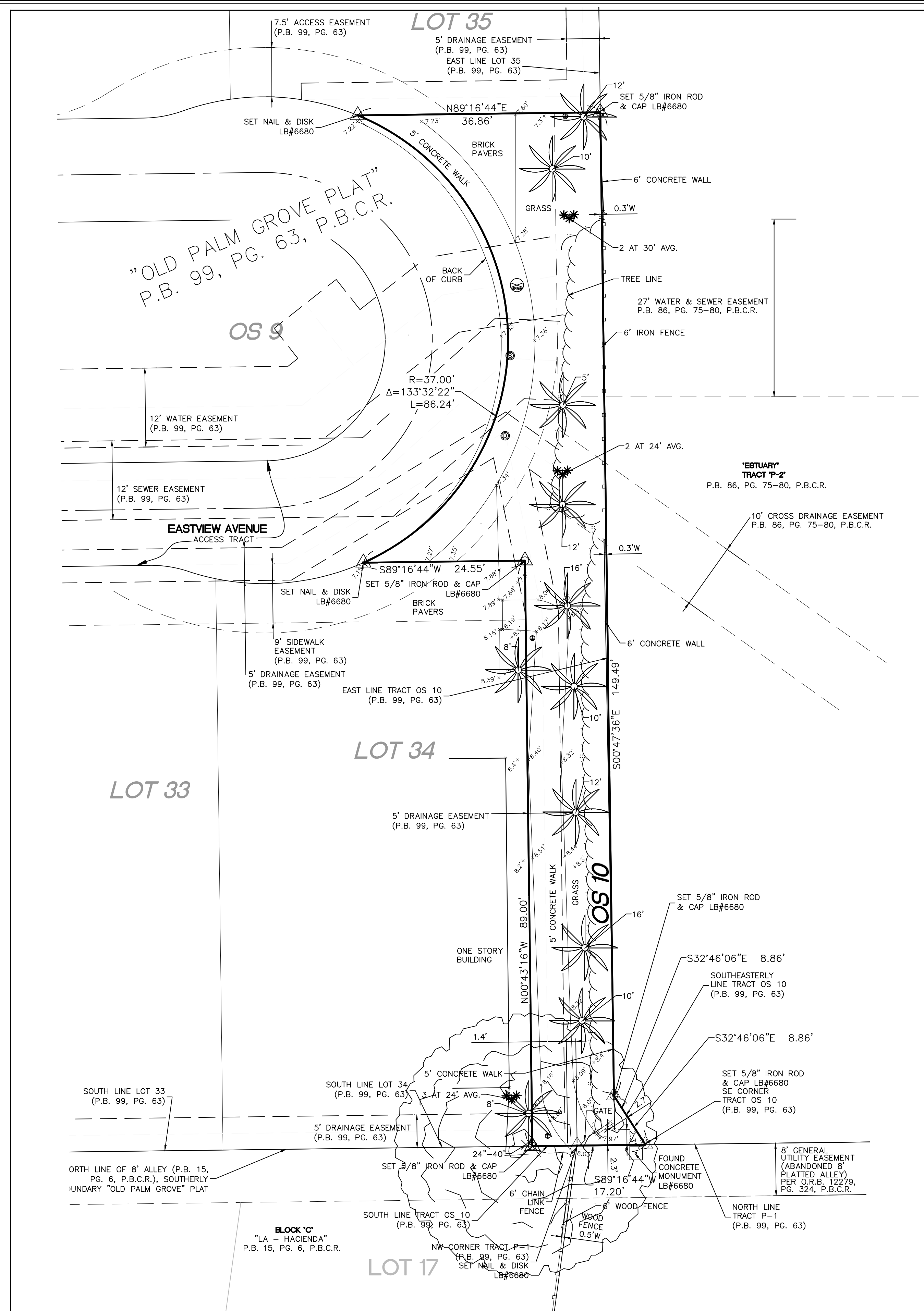
NOT VALID WITHOUT THE SIGNATURE AND THE ORIGINAL RAISED SEAL OF A FLORIDA LICENSED SURVEYOR AND MAPPER

South Florida Office: 13680 NW 5th Street, Suite 200
Sunrise, Florida 33325
954-436-7000
www.millerlegg.com

CERTIFICATE OF AUTHORIZATION			
LB6680			
DES.	LP	MR	CHK.
PROJECT / FILE NO.			
22-00027			
DRAWING NO.			
SH-5			
DATE DRAWN:	3/12/24	BY:	5
			6

SKETCH OF BOUNDARY & TOPOGRAPHIC SURVEY

V:\PROJECTS\2022\22-0007 - OLD PALM GROVE PLAT PERIMETER SURVEY\DRAWINGS\22-0007_ETS_PARCEL.DWG 4/27/24 BY UDROLSK



- SYMBOL LEGEND:**
- ⊙ STORM DRAINAGE MANHOLE
 - ⊠ CATCH BASIN
 - ⊙ STREET SIGN
 - ⊙ SANITARY SEWER MANHOLE
 - ⊙ CLEAN OUT
 - ⊙ WIRE PULL BOX
 - ⊙ WATER VALVE
 - ⊙ CONCRETE POWER POLE
 - ⊙ LIGHT POLE
 - ⊙ WOOD UTILITY POLE
 - ⊙ ELECTRIC METER
 - ⊙ FIRE HYDRANT
 - ⊙ BOLLARD
 - ⊙ TELEPHONE SERVICE RISER
 - ⊙ MANHOLE
 - ⊙ IRRIGATION CONTROL VALVE
 - ⊙ WATER METER
 - ⊙ BACKFLOW PREVENTER
 - ⊙ FLOOD LIGHT
 - ⊙ BOLLARD
 - ⊙ MULTICOLUMN SIGN
- SEWER VALVE COVER**
- ⊙ TRANSFORMER
 - ⊙ YARD DRAIN
 - ⊙ A/C UNIT
 - ⊙ GUY ANCHOR
 - ⊙ CURB INLET
 - ⊙ CONCRETE LIGHT POLE
 - ⊙ FIRE DEPARTMENT CONNECTION
 - ⊙ POLE WITH CAMERA
- ABBREVIATIONS:**
- P.B.C.R. - PALM BEACH COUNTY RECORDS
 - P.B. - PLAT BOOK
 - PG. - PAGE
 - U.E. - UTILITY EASEMENT
 - DIA. - DIAMETER
 - CLF - CHAIN LINK FENCE
 - BFP - BACKFLOW PREVENTER
 - CL - CENTERLINE
- TREE LEGEND:**
- ⊙ TREE
 - ⊙ ROYAL POINCIANA TREE
 - ⊙ GUMBO LIMBO TREE
 - ⊙ PALM TREE
 - ⊙ PALM CLUSTER
 - ⊙ ROYAL PALM
- TRUNK DIAMETER IN INCHES**
- ⊙ 10"-15"
 - ⊙ CANOPY DIAMETER IN FEET
- PALM HEIGHT IN FEET**
- ⊙

DETAIL 4

SKETCH OF BOUNDARY & TOPOGRAPHIC SURVEY

OLD PALM GROVE

CITY OF DELRAY BEACH, PALM BEACH COUNTY, FLORIDA

I HEREBY CERTIFY THAT THIS SURVEY MEETS STANDARDS OF PRACTICE AS SET FORTH BY THE FLORIDA DEPARTMENT OF AGRICULTURE AND CONSUMER SERVICES OF PROFESSIONAL SURVEYORS AND MAPPERS IN CHAPTER 5J-17, FLORIDA ADMINIS... PURSUANT TO SECTION 472.027, FLORIDA STATUTES, DATED THIS 28th DAY OF MARCH, 2024. A.D.

MARTIN P. ROSSI
 PROFESSIONAL SURVEYOR AND MAPPER
 STATE OF FLORIDA REGISTRATION No. 5857
 NOT VALID WITHOUT THE SIGNATURE AND THE ORIGINAL RAISED SEAL OF A FLORIDA LICENSED SURVEYOR AND MAPPING PROFESSIONAL

South Florida Office: 13680 NW 5th Street, Suite 200
 Sunrise, Florida 33325
 954-436-7000
 www.millerlegg.com

CERTIFICATE OF AUTHORIZATION			
LB6680			
DES.	LP	MR	CHK.
PROJECT / FILE NO.			
22-00027			
DRAWING NO.			
SH-6			
DATE DRAWN			
3/12/24			
SHEET			
6			