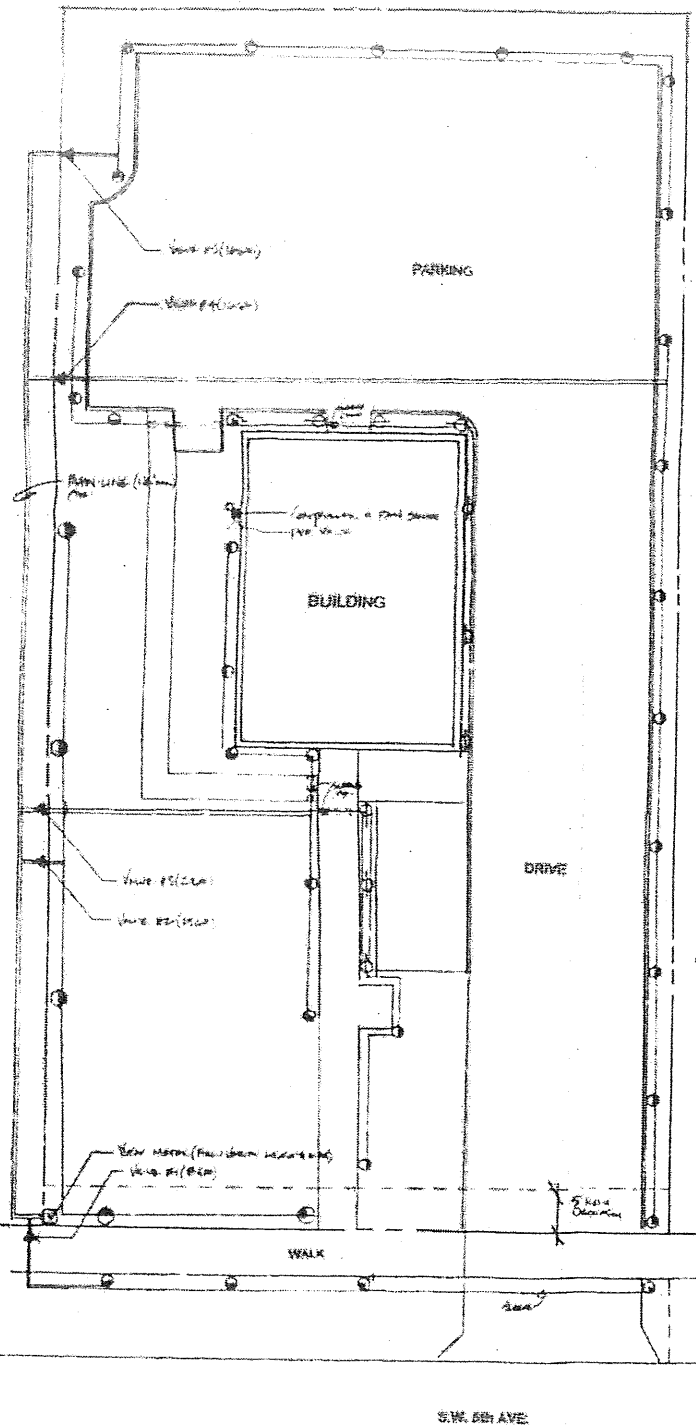


IRRIGATION LEGEND

- Top 570-8 pop-up series, pattern as shown
- Top 570-12 pop-up heads, with post, pattern as shown
- Huber rotary series
- 50psi/100 series valves, with bleed-off valve
- Reinforced polybutylene (RP) series
- Mini-circuits rain sensor

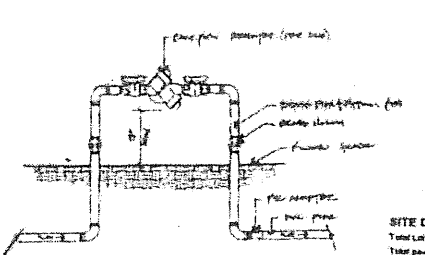
WATER SOURCE: City water meter, field verify location & size

NOTE: Main line & valve locations are shown for graphic clarity only. All main lines & valve are to be located within landscape areas on-site.



IRRIGATION NOTES

- Notes**
- Automatic Irrigation System
 - Use as shown
 - Pressure regulated
 - Under 1/2" pipe
- General**
- Systems shall be installed in accordance with local codes, manufacturer's instructions, and all applicable codes.
 - Improvement design based on "Irrigation Design Manual" dated 11/1/02.
 - Location shall refer to this plan for installation of all components and pipe systems.
 - The water source for this system shall be the existing city water meter located north of driveway & adjacent to building.
 - All meters shall be installed in a protected area and shall be accessible for inspection and repair.
 - Location shall refer to this plan for installation of all components and pipe systems.
 - The water source for this system shall be the existing city water meter located north of driveway & adjacent to building.
 - All meters shall be installed in a protected area and shall be accessible for inspection and repair.
 - Location shall refer to this plan for installation of all components and pipe systems.
 - The water source for this system shall be the existing city water meter located north of driveway & adjacent to building.
 - All meters shall be installed in a protected area and shall be accessible for inspection and repair.
- Piping**
- Flow rate in minimum size pipe shall be used for all main lines.
 - Flow rate shall be calculated in accordance with local codes and pipe manufacturer's recommendations.
 - Main line shall be installed in a protected area and shall be accessible for inspection and repair.
 - Main line shall be installed in a protected area and shall be accessible for inspection and repair.
 - Main line shall be installed in a protected area and shall be accessible for inspection and repair.
- Speakers**
- Speakers shall be installed in a protected area and shall be accessible for inspection and repair.
 - Speakers shall be installed in a protected area and shall be accessible for inspection and repair.
 - Speakers shall be installed in a protected area and shall be accessible for inspection and repair.
- Control System**
- Control system shall be installed in a protected area and shall be accessible for inspection and repair.
 - Control system shall be installed in a protected area and shall be accessible for inspection and repair.
 - Control system shall be installed in a protected area and shall be accessible for inspection and repair.
- Valves**
- Valves shall be installed in a protected area and shall be accessible for inspection and repair.
 - Valves shall be installed in a protected area and shall be accessible for inspection and repair.
 - Valves shall be installed in a protected area and shall be accessible for inspection and repair.
- Main Source**
- Main source shall be installed in a protected area and shall be accessible for inspection and repair.
 - Main source shall be installed in a protected area and shall be accessible for inspection and repair.
 - Main source shall be installed in a protected area and shall be accessible for inspection and repair.

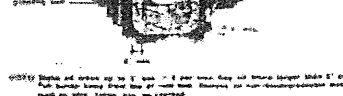


MATERIAL SCHEDULE

Qty.	Key	Botanical/ Common Name	Size
6	1C1	Box Calceolaria/ Dahoon Holly Tree	12-50"
1	1P1	Polypodium interjectum/ Yellow polka-dot plant	
3	1B1	Bursera simaruba/ Gumbo Limbo tree	
5	1D1	Quercus virginiana/ Live oak tree	
1	1F1	Paederia foetida/ Everglades palm	
25	1E1	Ficus bursariensis/ Fig	12" x 18" stock
28	1M1	Marrubium patens/ Owl/ Owl/ Owl	4 1/2" x 20" UC
153	1N1	Myrsine fragrans/ Sampson tree	15" x 20" UC
20	1J1	Jasminum volubile/ Wax Jasmine	24" x 20" UC
20	1K1	Chrysobalanus icaya/ Coccoloba	15" x 20" UC
32	1L1	Polypodium interjectum/ Yellow polka-dot plant	15" x 20" UC
50	1W1	Polypodium interjectum/ Yellow polka-dot plant	12" x 18" UC

NOTE: * indicates native tree drought tolerant plant materials per SWFWMD Xeriscaping Manual

REVISED 2/20/03 3/10/03



SITE DATA

Total lot area	10781.25 Sq. Ft.
Total paved area	6800 Sq. Ft.
Required permeable percentage (10% of total paved area)	680 Sq. Ft.
Current permeable area provided	1000 Sq. Ft.
Total # of trees required (1 tree/1200 sq. ft. required permeable)	5 Trees
Number of trees trees provided	3 Trees
Permeable percentage (required/required)	100.00 Sq. Ft.
Permeable percentage provided	100.00 Sq. Ft.
Number of 30" diameter trees (1 tree per 3000 sq. ft.)	12 Trees
Number of 18" diameter trees provided	12 Trees

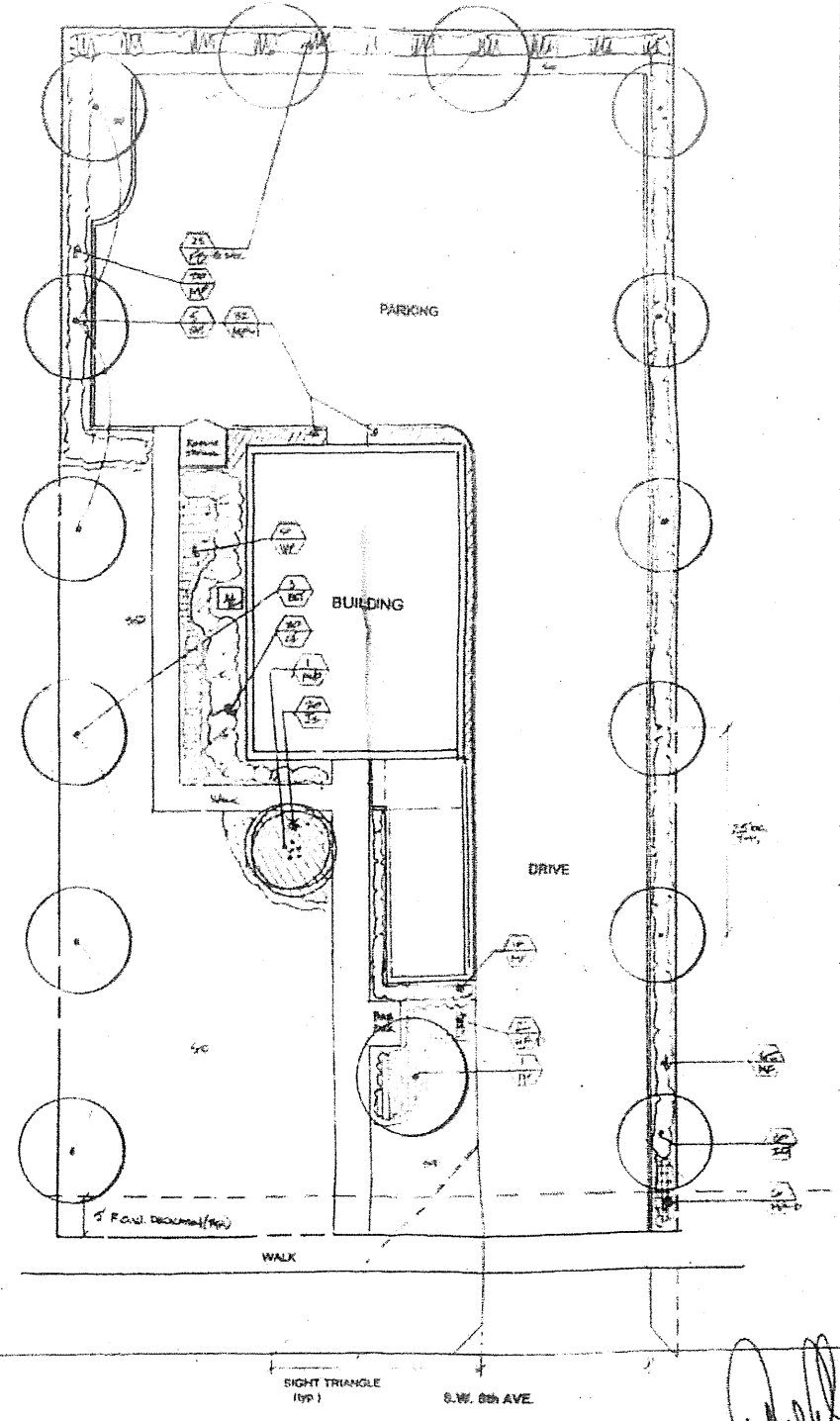
XERISCAPE CALCULATIONS

Required shrubs & ground covers (20% of required shrubs & ground covers)	408 Sq. Ft.
Required ground covers provided	947 Sq. Ft.
Required native plant materials (25% of required shrubs & ground covers)	124 Sq. Ft.
Native plant materials provided	675 Sq. Ft.
Number of native trees required (20% of required trees)	2 Trees
Native trees provided	12 Trees

INTERIOR TREE REQUIREMENTS
Due to the existing non-conforming site conditions, this requirement is not applicable to be met.

LANDSCAPE NOTES

- All plant materials shall be 100% native, drought tolerant, and shall be propagated by the landscape architect.
- All plant materials shall be 100% native, drought tolerant, and shall be propagated by the landscape architect.
- Planting shall be done in accordance with the landscape architect's instructions. All plant materials shall be installed in accordance with the landscape architect's instructions.
- Planting shall be done in accordance with the landscape architect's instructions. All plant materials shall be installed in accordance with the landscape architect's instructions.
- Planting shall be done in accordance with the landscape architect's instructions. All plant materials shall be installed in accordance with the landscape architect's instructions.
- Planting shall be done in accordance with the landscape architect's instructions. All plant materials shall be installed in accordance with the landscape architect's instructions.
- Planting shall be done in accordance with the landscape architect's instructions. All plant materials shall be installed in accordance with the landscape architect's instructions.
- Planting shall be done in accordance with the landscape architect's instructions. All plant materials shall be installed in accordance with the landscape architect's instructions.
- Planting shall be done in accordance with the landscape architect's instructions. All plant materials shall be installed in accordance with the landscape architect's instructions.
- Planting shall be done in accordance with the landscape architect's instructions. All plant materials shall be installed in accordance with the landscape architect's instructions.
- Planting shall be done in accordance with the landscape architect's instructions. All plant materials shall be installed in accordance with the landscape architect's instructions.
- Planting shall be done in accordance with the landscape architect's instructions. All plant materials shall be installed in accordance with the landscape architect's instructions.
- Planting shall be done in accordance with the landscape architect's instructions. All plant materials shall be installed in accordance with the landscape architect's instructions.
- Planting shall be done in accordance with the landscape architect's instructions. All plant materials shall be installed in accordance with the landscape architect's instructions.
- Planting shall be done in accordance with the landscape architect's instructions. All plant materials shall be installed in accordance with the landscape architect's instructions.



REVISIONS	BY
1	AS
2	AS

DESIGNED BY:
CARTER & ASSOCIATES
LANDSCAPE ARCHITECTS, INC.
74 N.E. 5th Ave., DELRAY BEACH, FL 33483
561.272.9821

Landscape & Irrigation Plans For:
STEVES OFFICE BUILDING
Delray Beach, FL
75 S.W. 5th Ave.

DRAWN	AS
CHECKED	AS
DATE	11.27.02
SCALE	1"=10'
JOB NO.	02-01-01
SHEET	1

Handwritten signature

