

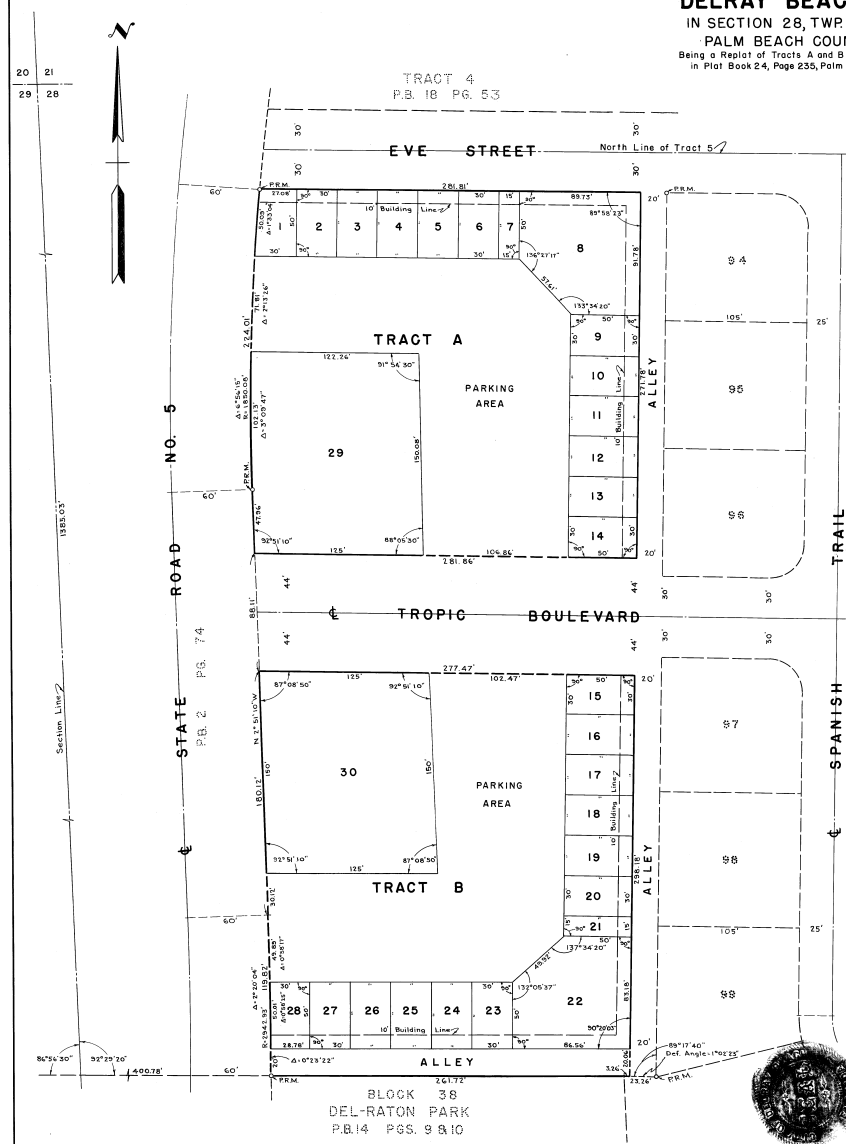
PL195700052

PLAT OF GATEWAY SHOPPING CENTER

DELRAY BEACH, FLORIDA
IN SECTION 28, TWP. 46 S., RGE. 43 E.
PALM BEACH COUNTY, FLORIDA
Being a Replot of Tracts A and B of TROPIC ISLE recorded
in Plat Book 24, Page 235, Palm Beach County Records.

76

STATE OF FLORIDA
COUNTY OF PALM BEACH } ss. 15
This Plat was filed for record on 5/10/57
this 15th day of May, 1957, at 10:00 A.M.
and duly recorded in Plat Book No.
25 on page 76.



STATE OF FLORIDA
COUNTY OF PALM BEACH ss
KNOW ALL MEN BY THESE PRESENTS, that KINGBEE COMPANY and
TENACE COMPANY, both Florida Corporations, the owners of the tract of land lying
and being in Section 28, Township 46 South, Range 43 East, Palm Beach County, Florida,
shown hereon as GATEWAY SHOPPING CENTER, and more particularly described as
follows, to wit:
Tract A (owned by KINGBEE COMPANY) and Tract B (owned by TENACE
COMPANY), TROPIC ISLE, recorded in Plat Book 24, Page 235, Public Records
of Palm Beach County, Florida,
have caused the same to be surveyed and plotted as shown hereon, and do hereby
dedicate to the perpetual use of the public, as a public highway, the Alley shown
hereon. Subject to an Easement for the construction and maintenance of Public
Utilities as shown in Plat Book 24, Page 235.
IN WITNESS WHEREOF the said Corporations have caused these presents to
be signed by their President and attested by their Secretary, and their corporate
seals to be affixed hereto, by and with the authority of their Board of Directors,
this 10th day of July, A.D. 1957.

Attest: Joel Hoch Secretary KINGBEE COMPANY
By: M. N. Sturtevant President
Attest: Joel Hoch Secretary TENACE COMPANY
By: M. N. Sturtevant President

STATE OF FLORIDA
COUNTY OF BROWARD ss
I HEREBY CERTIFY that on this day personally appeared before me, an officer
duly authorized to administer oaths and take acknowledgments, M. N. STURTEVANT and
JOEL HOCH, President and Secretary, respectively of both KINGBEE COMPANY and
TENACE COMPANY, Florida Corporations, to me well known and known to me to be
the individuals described in, and who executed the foregoing dedication, and they acknow-
ledged before me that they executed the same as such officers of said Corporations,
by and with the authority of their Board of Directors, and that their act and deed was
the act and deed of said Corporations.
IN WITNESS my hand and official seal of Deerfield Beach, County of
Broward, and State of Florida, this 10th day of July, A.D. 1957.

NOTE
Building Setback Lines shall be as required
by ordinances of the City of Delray Beach,
Florida.
My Commission expires: July 12, 1959
Notary Public

STATE OF FLORIDA
COUNTY OF PALM BEACH ss
I HEREBY CERTIFY that the plat shown hereon is a true and correct represen-
tation of a survey, made under my direction, of the foregoing described property, and
that said survey is accurate to the best of my knowledge and belief, and that permanent
reference monuments (P.R.M.) have been placed as required by law.
Subscribed and sworn to before me this 6th day of August, A.D. 1957.

My Commission expires: October 3, 1957
Notary Public

Approved: August 17th, A.D. 1957
City of Delray Beach, Florida

By: Samuel Warren Mayor

Approved: August 12, A.D. 1957
Board of County Commissioners

By: Rowan King City Clerk

By: John P. Fitzgerald Chairman

By: William S. Mudd Director of Public Works

By: William S. Mudd County Engineer

BROCKWAY, WEBER & BROCKWAY
ENGINEERS
WEST PALM BEACH, FLORIDA

GATEWAY SHOPPING CENTER

SCALE: 1" = 40'	Dwg. No.
DATE: JULY 1957	Job No. 57-655