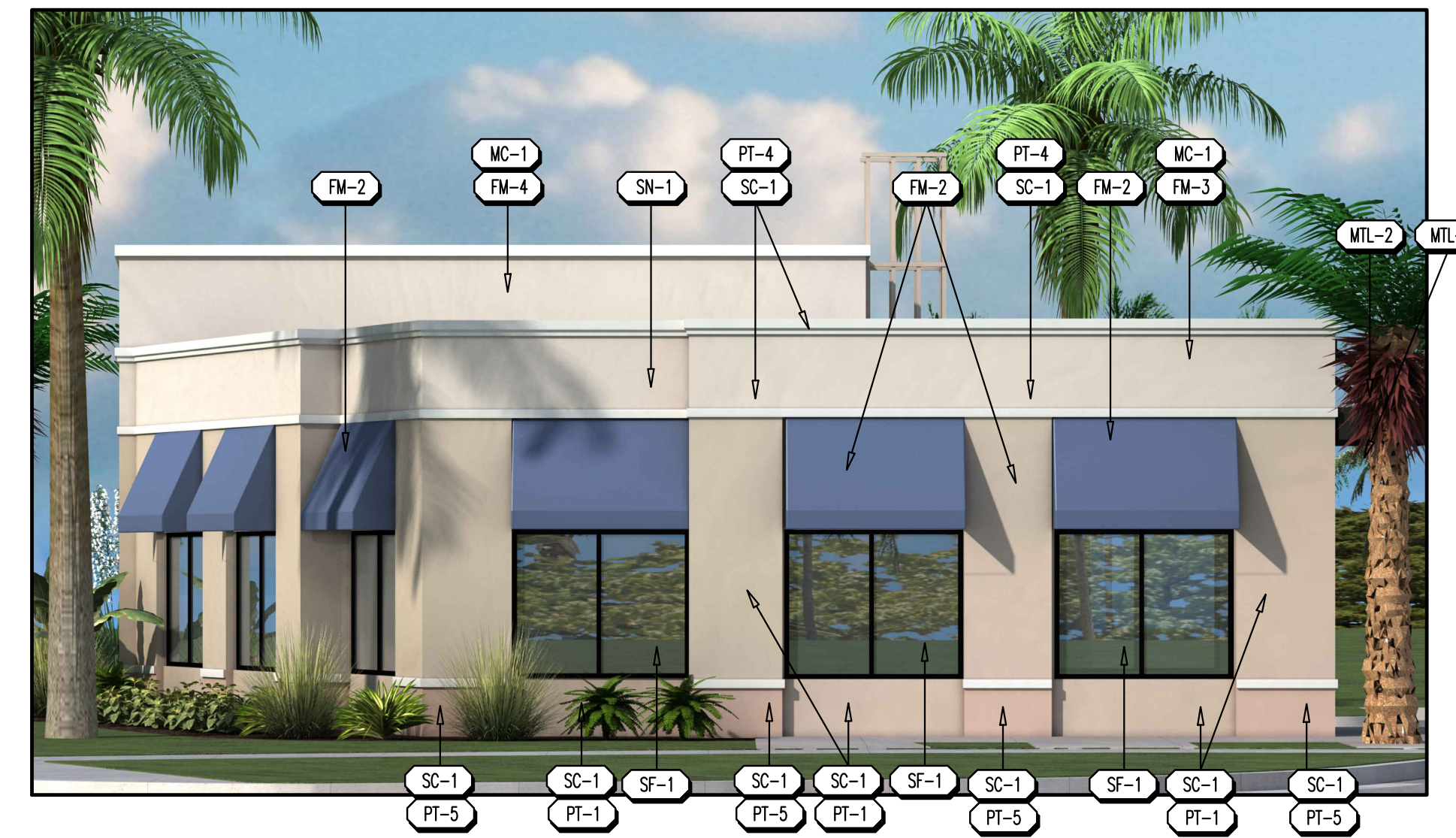
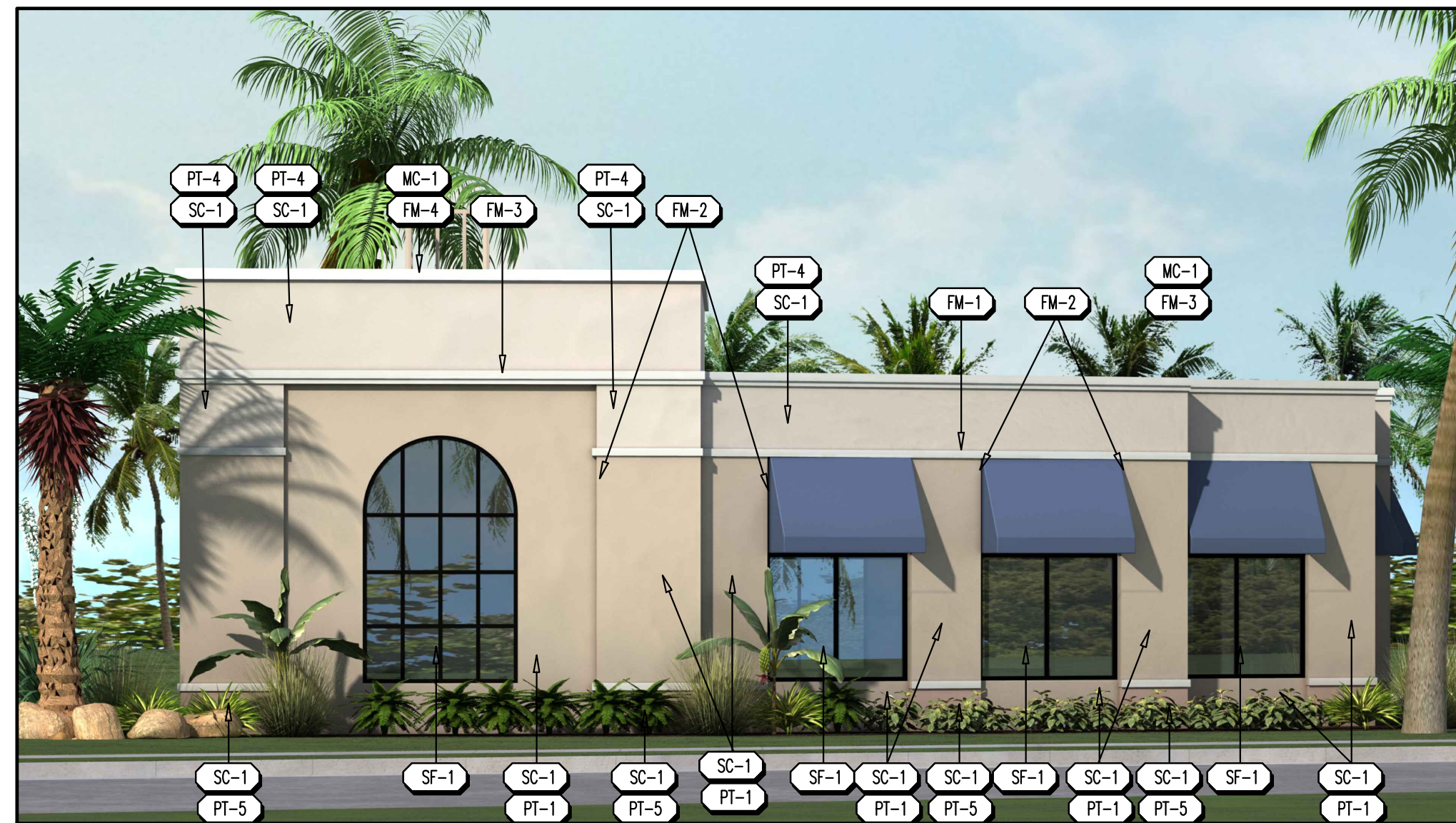


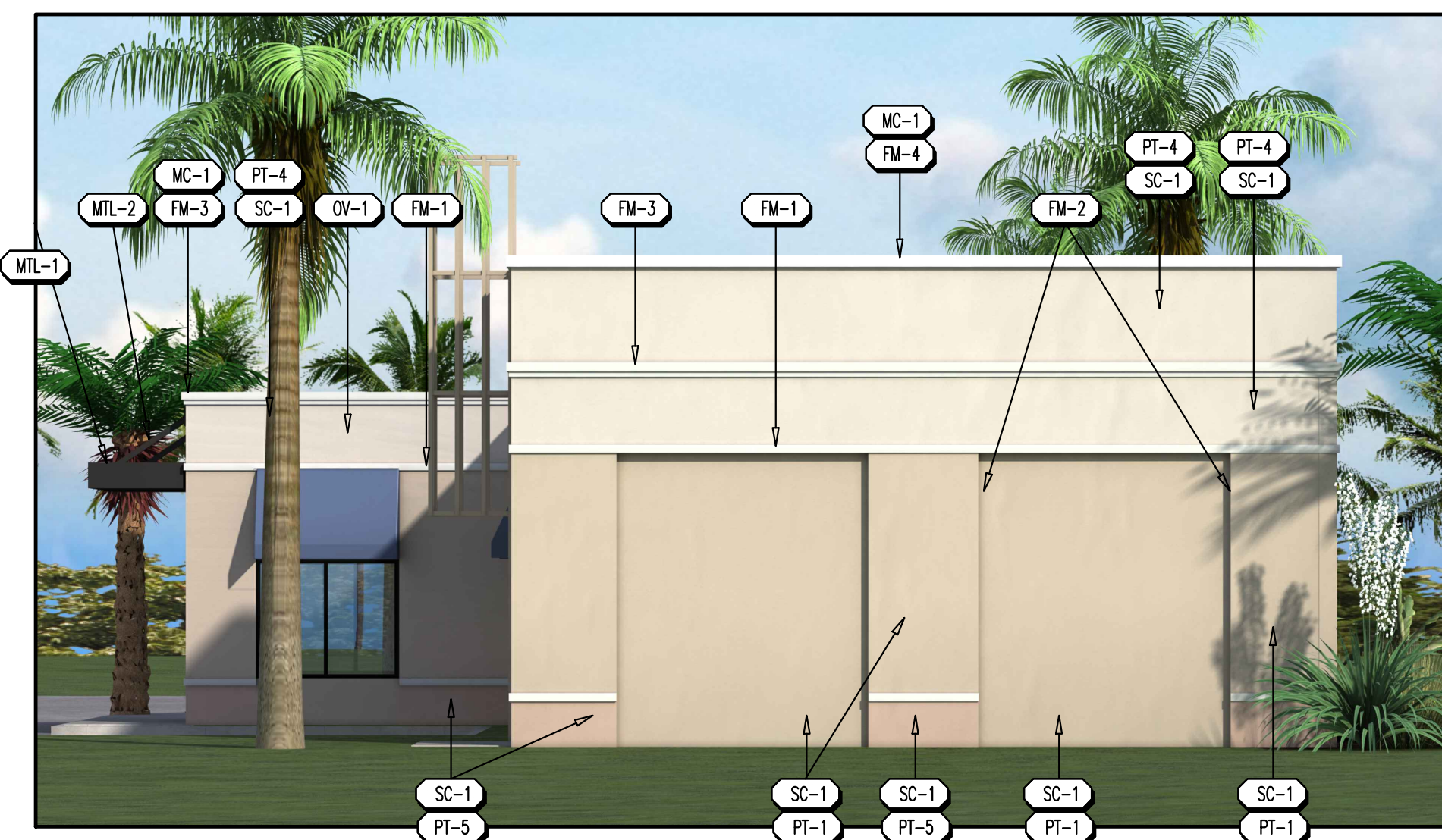
North Elevation
Scale: 3/16" = 1'-0"
1
A110.1



East Elevation
Scale: 3/16" = 1'-0"
36.1 % Transparency > 15% Required
2
A110.1



South Elevation
Scale: 3/16" = 1'-0"
37.1 % Transparency > 15% Required
3
A110.1



West Elevation
Scale: 3/16" = 1'-0"
4
A110.1

Exterior Elevation Schedule																
Symbol	Material	Manufacturer	Product	Color	Finish	Detail	Remarks	Symbol	Material	Manufacturer	Product	Color	Finish	Detail	Remarks	
SC-1	STUCCO	LOCAL SUPPLIER	3/8" THICKNESS (2 COAT APPLICATION)	SEE ELEVATIONS	MEDIUM TEXTURED			DR-1	DOOR	HAWNEER OR APPROVED EQUAL	350 IR	MEDIUM BRONZE			FLORIDA PRODUCT APPROVED - FL#6786.1	
FM-1	FOAM BAND	LOCAL SUPPLIER		PAINT: PT-2	MEDIUM TEXTURED		1/2" X 3"	DR-2	DOOR	ALLEGION OR APPROVED EQUAL	STEELESWAY H-SERIES	PAINT: PT-1			FLORIDA PRODUCT APPROVED - FL#1591.1	
FM-2	FOAM BAND	LOCAL SUPPLIER		PAINT: PT-2	MEDIUM TEXTURED		1" X 1"	OV-1	OVERFLOW SCUPPER			MATCH ADJACENT WALL			BY GENERAL CONTRACTOR	
FM-3	FOAM CORNICE	LOCAL SUPPLIER		PAINT: PT-2	MEDIUM TEXTURED		3" X 6"	MC-1	METAL CORNING OR DRIP EDGE			PAINT: PT-1			BY GENERAL CONTRACTOR	
FM-4	FOAM CORNICE	LOCAL SUPPLIER		PAINT: PT-2	MEDIUM TEXTURED		1" X 6"	MC-2	METAL DOOR RAIN GUARD			MATCH PT-1			BY GENERAL CONTRACTOR	
PT-1	PAIN	SHERWIN WILLIAMS	JERSEY CREAM	SW 6378			MAIN BUILDING	LF-1	WALL PACK LIGHT FIXTURE	LSI INDUSTRIES	(PFWG-FM-32-CT-F-120-BUF-PD120)					
PT-2	PAIN	SHERWIN WILLIAMS	ALABASTER	SW 7008			FOAM BANDING	ML-1	CUSTOM ALUMINUM OVERHANG	BY GENERAL CONTRACTOR		PAINT: PT-3			BY GENERAL CONTRACTOR WITH RECESSED LIGHTING	
PT-3	PAIN	SHERWIN WILLIAMS	PAVILION BEIGE	SW 7512			ANNING	ML-2	CUSTOM ALUMINUM ANGLED SUPPORTS	BY GENERAL CONTRACTOR		PAINT: PT-3			BY GENERAL CONTRACTOR	
PT-4	PAIN	SHERWIN WILLIAMS	CRISP LINEN	SW 6378			BUILDING CAP	HMC	MECHANICAL HANG UNIT	BY GENERAL CONTRACTOR					CONCEALED BY PARAPET	
PT-5	PAIN	SHERWIN WILLIAMS	NEIGHBORLY PEACH	SW 6632			BUILDING BASE	LOOR	ROOF ACCESS LADDER	BY GENERAL CONTRACTOR					SEE DETAIL 6/A190.1	
SF-1	STOREFRONT	WXX OR APPROVED EQUAL	PHS 50 - 1" INSULATED (LOW U" IF APPROVED BY CLIENT)		GLASS: CLEAR (NO TINTING)		FLORIDA PRODUCT APPROVED - FL#14218-89	SL-1	PROPOSED SIGN LOCATION						TO BE PERMITTED AND APPROVED BY OTHERS	
ANN-1	ANNING	LOCAL SUPPLIER		BLUE	ALUMINUM FRAME: BRONZE		SUPPLIER TO PROVIDE ENGINEERING FOR PERMITTING AND APPROVAL									

Notes:
1. PROVIDE PRIMER/SEALER PRIOR TO FINISH PAINT.
2. ALL MECHANICAL UNITS AND CONDENSING EQUIPMENT IS TO BE INSTALLED BEHIND PARAPET OF ROOF AND HIDDEN FROM VIEW. GENERAL CONTRACTOR IS TO PROVIDE SCREENING AS REQUIRED BY THE ZONING DEPARTMENT.
3. ALL EXPOSED PIPING AND CONDUIT TO MATCH ADJACENT SURFACE.

ARJS ARCHITECTS
11019 Northwest 19th Street
Coral Springs, Florida 33071

Corp Lic: AA-26001293 O: 954.753.0018
Robert Jordan Sopoun III F: 954.346.7723
Arch Lic: AR-0017057 E: jordy@rjsarchitects.com

A Building for:
Drutau Retail
Northwest Corner of
Atlantic Ave & NW 18 Ave
Delray Beach, Florida

ISSUANCE OF DOCUMENTATION:	
Description:	Date:
<input checked="" type="checkbox"/> PRELIMINARY DESIGN	6.24.2019
<input checked="" type="checkbox"/> CLIENT APPROVAL	8.5.2020
<input checked="" type="checkbox"/> LANDLORD APPROVAL	8.5.2020
<input type="checkbox"/> BIDDING	
<input type="checkbox"/> PERMIT	

REVISIONS:		
Number:	Date:	Description:
1	12.7.2020	ZONING REVIEW
2	11.11.2021	ZONING REVIEW

RENDERED ELEVATIONS

Project Number: **19016**
Principal: RJS
Project Manager: RJS
Drawn by: RJS

Architecture
A 200.1
Total Sheets: 4

This document is the property of ARJS Architects, Inc. It is to be used only for the project and location specified. No part of this document may be reproduced, stored in a retrieval system, or transmitted in any form or by any means, electronic, mechanical, photocopying, recording, or by any information storage and retrieval system, without the prior written permission of ARJS Architects, Inc. The user of this document is to be held responsible for any errors or omissions. ARJS Architects, Inc. does not warrant the accuracy or completeness of the information contained herein, and its use is at the user's sole risk.