

Arts WAREHOUSE

A Project of the Delray Beach CRA



DELRAY BEACH CRA
COMMUNITY REDEVELOPMENT AGENCY

MAY 2025 REPORT

Events

First Friday Art Walk - May 2nd (159 Visitors)
**Open Studio Days with the Cultural Council
for Palm Beach County - May 17th & 18th**
Co-Working Studio - Weekly

Art Education



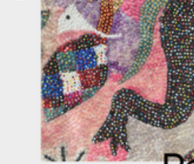
**20 Workshops
scheduled in April**

**22 Workshops
scheduled in May**

[Click Here](#) for Workshop Registration

Current Exhibitions

Kilti



**MAY 2 -
JUNE 28,
2025**

**Revisited
Haitian Art**

New on View



NEW Back Room Gallery



NEW East Room Gallery

Resident Artist Program

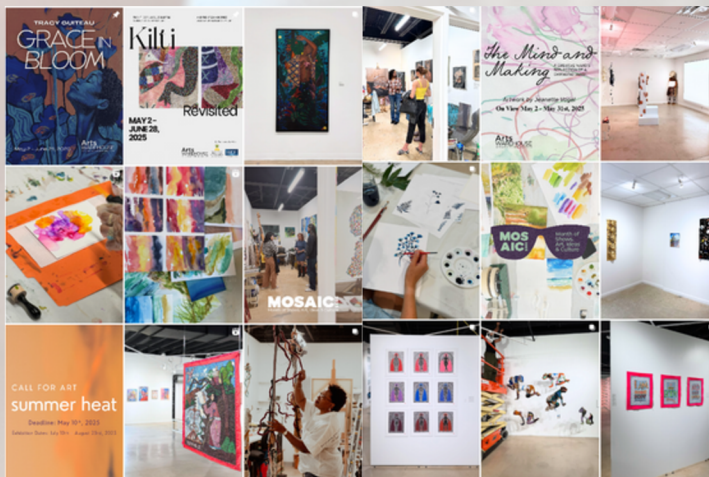


14 of 15 Studios occupied

Satellite Exhibition at
the BRIC including
past and present AW
Resident Artists



Social Media Outreach



**April 9 - May 8
Insights:**

Accounts Reached 9,505
Followers 7,622 +238
Views 36.6K



artswarehouse.org



[@artswarehousedelray](https://www.instagram.com/artswarehousedelray)

Arts Warehouse

Regular Business Hours for visitors are:

Wednesday - Friday 10am - 7pm,

Saturday 10am - 5pm, or by appointment



This Delray Beach Community Redevelopment Agency rehabilitated warehouse is located on Artist Alley in the Pineapple Grove district opened in late 2017. Arts Warehouse is an Art space that includes studio artists, holds gallery exhibitions, visual art workshops, professional development opportunities, talks, and special events. The 15,000 sq. ft. space is a catalyst for economic development and growth within the Pineapple Grove Arts District and the community as a whole, supporting artists as small businesses.

Click here to learn more about the CRA's Redevelopment Efforts