

**DESCRIPTION:**

THE WEST HALF (1/2) OF THE NORTHWEST QUARTER (1/4) OF THE NORTHEAST QUARTER (1/4) OF THE SOUTHEAST QUARTER (1/4) OF SECTION 14, TOWNSHIP 46 SOUTH, RANGE 42 EAST, PALM BEACH COUNTY, FLORIDA;

LESS THE NORTH 57.00 FEET AS CONVEYED TO LAKE WORTH DRAINAGE DISTRICT BY DEED RECORDED IN DEED BOOK 113, PAGE 429, PUBLIC RECORDS OF PALM BEACH COUNTY, FLORIDA.

SAID LANDS ALSO BEING DESCRIBED AS FOLLOWS:

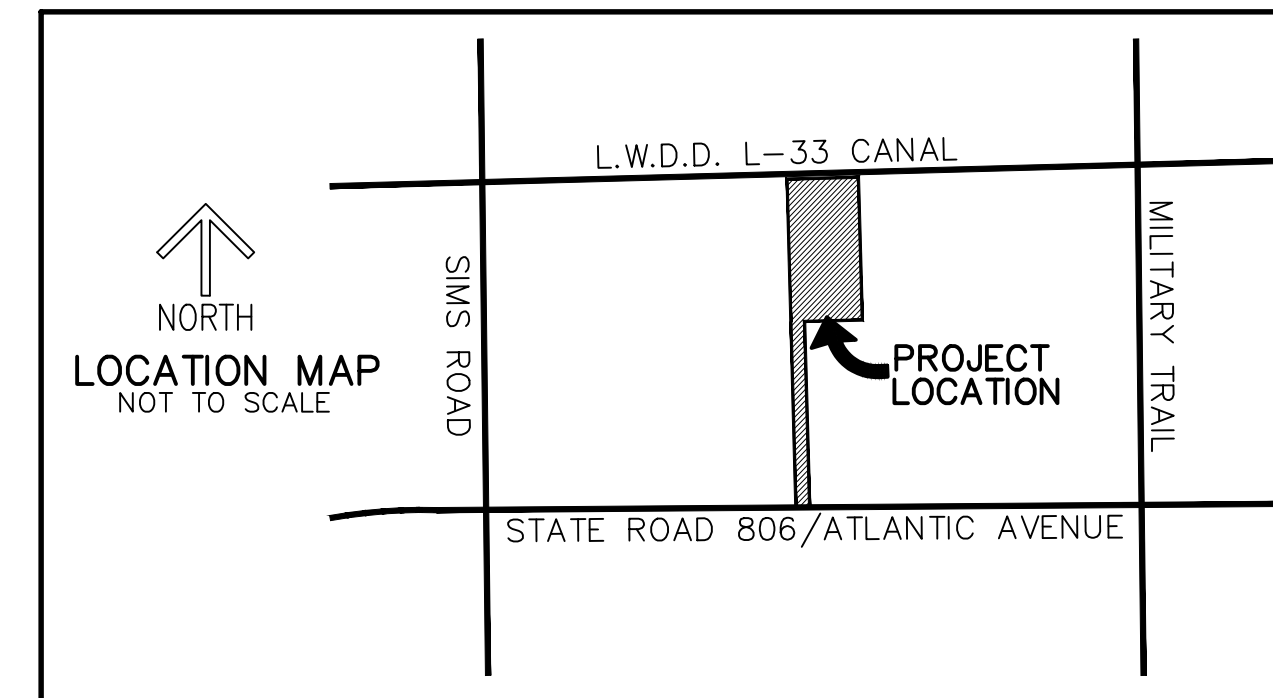
THE WEST ONE-HALF (W 1/2) OF THE NORTHWEST ONE-QUARTER (NW 1/4) OF THE NORTHEAST ONE-QUARTER (NE 1/4) OF THE SOUTHEAST ONE-QUARTER (SE 1/4), SECTION 14, TOWNSHIP 46 SOUTH, RANGE 42 EAST, PALM BEACH COUNTY, FLORIDA, MORE PARTICULARLY DESCRIBED AS FOLLOWS:

COMMENCING AT THE SOUTHEAST CORNER OF FOUNTAINS AT DELRAY BEACH, AS RECORDED IN PLAT BOOK 83, PAGES 37 AND 38 OF THE PUBLIC RECORDS OF PALM BEACH COUNTY, FLORIDA; THENCE S.88°06'33"W. ALONG THE SOUTH LINE THEREOF, SAID SOUTH LINE BEING THE NORTH RIGHT-OF-WAY LINE OF THE LAKE WORTH DRAINAGE DISTRICT L-33 CANAL, AS RECORDED IN OFFICIAL RECORD BOOK 3292, PAGE 941 OF SAID PUBLIC RECORDS, AND THE NORTH LINE OF THE SOUTHEAST ONE-QUARTER (1/4) OF SECTION 14, TOWNSHIP 46 SOUTH, RANGE 42 EAST, A DISTANCE OF 908.70 FEET ; THENCE S.00°21'11"E. ALONG THE WEST LINE OF THOSE CERTAIN LANDS DESCRIBED IN SAID OFFICIAL RECORD BOOK 3292, PAGE 941 AND OFFICIAL RECORD BOOK 18197, PAGE 16 OF SAID PUBLIC RECORDS, SAID LINE BEING THE EAST LINE OF THE WEST ONE-HALF (1/2) OF THE NORTHWEST ONE-QUARTER (1/4) OF THE NORTHEAST ONE-QUARTER (1/4) OF THE SOUTHEAST ONE-QUARTER (1/4) OF SAID SECTION 14, A DISTANCE OF 57.02 FEET TO A POINT OF INTERSECTION WITH THE SOUTH RIGHT-OF-WAY LINE OF THE LAKE WORTH DRAINAGE DISTRICT L-33 CANAL, AS RECORDED IN DEED BOOK 113, PAGE 429 OF SAID PUBLIC RECORDS, AND THE POINT OF BEGINNING; THENCE CONTINUE S.00°21'11"E. ALONG SAID LINE, A DISTANCE OF 635.42 FEET; THENCE S.88°23'03"W. ALONG THE WEST LINE OF THAT CERTAIN PARCEL OF LAND DESCRIBED IN SAID OFFICIAL RECORD BOOK 18197, PAGE 16, SAID LINE BEING THE SOUTH LINE OF THE WEST ONE-HALF (1/2) OF THE NORTHWEST ONE-QUARTER (1/4) OF THE NORTHEAST ONE-QUARTER (1/4) OF THE SOUTHEAST ONE-QUARTER (1/4) OF SAID SECTION 14, A DISTANCE OF 334.32 FEET TO A POINT OF INTERSECTION WITH THE WEST LINE OF THE WEST ONE-HALF (1/2) OF THE NORTHWEST ONE-QUARTER (1/4) OF THE NORTHEAST ONE-QUARTER (1/4) OF THE SOUTHEAST ONE-QUARTER (1/4) OF SAID SECTION 14; THENCE N.00°20'22"W. ALONG THE EAST LINE OF HIGH POINT OF DELRAY WEST - PLAT NO. 2, AS RECORDED IN PLAT BOOK 40, PAGES 114 AND 115 OF SAID PUBLIC RECORDS, AND WEST LINE OF THE WEST ONE-HALF (1/2) OF THE NORTHWEST ONE-QUARTER (1/4) OF THE NORTHEAST ONE-QUARTER (1/4) OF THE SOUTHEAST ONE-QUARTER (1/4) OF SAID SECTION 14, A DISTANCE OF 633.82 FEET TO A POINT OF INTERSECTION WITH THE SOUTH RIGHT-OF-WAY LINE OF SAID L-33 CANAL; THENCE N.88°06'33"E. ALONG SAID RIGHT-OF-WAY LINE, A DISTANCE OF 334.21 FEET TO THE POINT OF BEGINNING.

SAID LANDS LYING IN PALM BEACH COUNTY, FLORIDA.  
CONTAINING 212,066 SQUARE FEET/4.8684 ACRES MORE OR LESS.

**SCHEDULE B-II TITLE EXCEPTIONS**

- EASEMENT AGREEMENT CONTAINED IN INSTRUMENT RECORDED SEPTEMBER 25, 1981, UNDER O.R. BOOK 3602, PAGE 273; AFFECTED BY RELEASE OF OBLIGATIONS RECORDED IN O.R. BOOK 3730, PAGE 1255, PUBLIC RECORDS OF PALM BEACH COUNTY, FLORIDA. (AFFECTS AS SHOWN)
- TEMPORARY FENCING PERMIT RECORDED IN O.R. BOOK 7880, PAGE 732, PUBLIC RECORDS OF PALM BEACH COUNTY, FLORIDA.. (AFFECTS AS SHOWN)



**NOTES:**

- REPRODUCTIONS OF THIS SURVEY ARE NOT VALID UNLESS SEALED WITH AN EMBOSSED SURVEYOR'S SEAL.
- ADDITIONS OR DELETIONS TO SURVEY MAPS OR REPORTS BY OTHER THAN THE SIGNING PARTY OR PARTIES IS PROHIBITED WITHOUT WRITTEN CONSENT OF THE SIGNING PARTY OR PARTIES.
- THE LAND DESCRIPTION SHOWN HEREON WAS PROVIDED BY THE CLIENT.
- BEARINGS SHOWN HEREON ARE RELATIVE TO A GRID BEARING OF N.89°15'18"E. ALONG THE NORTH RIGHT-OF-WAY LINE OF STATE ROAD 806/ATLANTIC AVENUE, AS RECORDED IN ROAD PLAT BOOK 11, PAGE 1 OF THE PUBLIC RECORDS OF PALM BEACH COUNTY, FLORIDA, RELATIVE TO THE FLORIDA STATE PLANE COORDINATE SYSTEM, EAST ZONE, NORTH AMERICAN DATUM OF 1983 (1990 ADJUSTMENT).
- ELEVATIONS SHOWN HEREON ARE RELATIVE TO THE NORTH AMERICAN VERTICAL DATUM OF 1988, BASED ON PALM BEACH COUNTY ENGINEERING DEPARTMENT BENCHMARK "WALTER", ELEVATION 18.645 FEET.
- PLOTTABLE MATTERS CONTAINED IN FIRST AMERICAN TITLE INSURANCE COMPANY COMMITMENT, POLICY NUMBER 5011412-1014918e, EFFECTIVE DATE 04/28/2022 AT 3:00 PM ARE REFLECTED ON THE SURVEY SHOWN HEREON.

**CERTIFIED TO:**

WORTH STRECKER, OLD REPUBLIC TITLE INSURANCE CO., PHILLIP HARRIS, P.A. AND JJ BUJALSKI.

**CERTIFICATE:**

I HEREBY CERTIFY THAT THE ATTACHED BOUNDARY AND TOPOGRAPHIC SURVEY OF THE HEREON DESCRIBED PROPERTY IS TRUE AND CORRECT TO THE BEST OF MY KNOWLEDGE AND BELIEF AS PREPARED UNDER MY DIRECTION ON APRIL 10, 2023. I FURTHER CERTIFY THAT THIS BOUNDARY AND TOPOGRAPHIC SURVEY MEETS THE STANDARDS OF PRACTICE SET FORTH IN CHAPTER 5J-17, FLORIDA ADMINISTRATIVE CODE, ADOPTED BY THE FLORIDA BOARD OF PROFESSIONAL SURVEYORS AND MAPPERS, PURSUANT TO FLORIDA STATUTES 472.027.

FILE NAME	8344-1-SURVEY-7
REVISIONS	
UPDATE TREES	04/10/2023
TKM	
DATE	
BY	

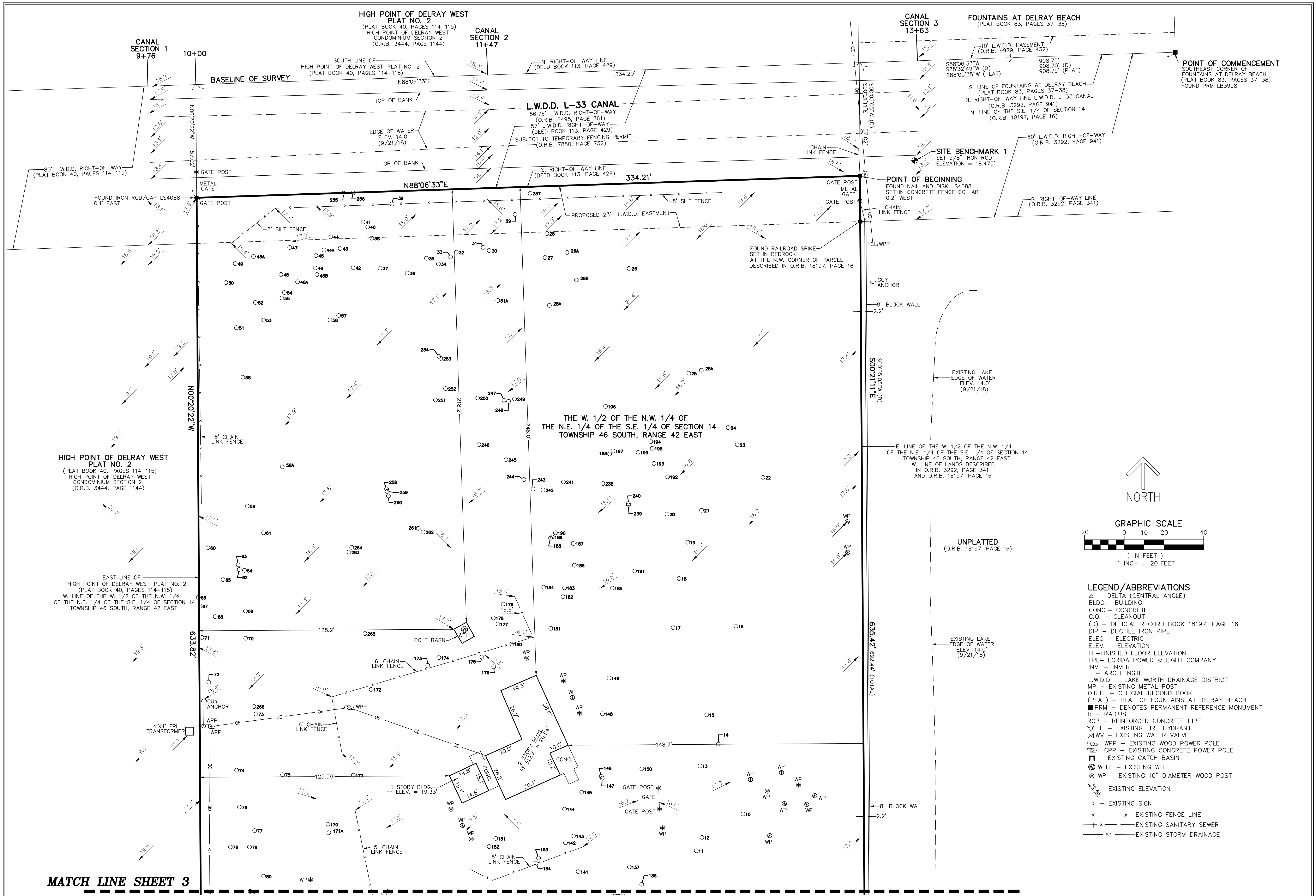
**CAULFIELD & WHEELER, INC.**  
 CIVIL ENGINEERING - LAND PLANNING  
 LANDSCAPE ARCHITECTURE - SURVEYING  
 7900 GLADES ROAD - SUITE 100  
 BOCA RATON, FLORIDA 33434  
 PHONE (561) 392-1991 / FAX (561) 750-1452

**THE FLO DELRAY  
 BOUNDARY AND TOPOGRAPHIC SURVEY  
 A PORTION OF SECTION 16,  
 TOWNSHIP 46 SOUTH, RANGE 42 EAST,  
 CITY OF DELRAY BEACH,  
 PALM BEACH COUNTY, FLORIDA**

DATE 4/10/2023  
 DRAWN BY rw  
 F.B./ PG. ELEC  
 SCALE AS SHOWN

DAVID P. LINDLEY  
 REGISTERED LAND  
 SURVEYOR NO. 5005  
 STATE OF FLORIDA  
 L.B. 3591

JOB # 8344-1  
 SHT. NO. 1  
 OF 5 SHEETS



**MATCH LINE SHEET 3**

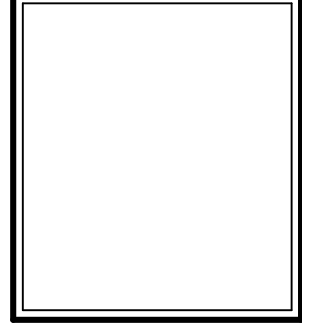
DATE	04/10/2023
BY	TKM
REVISIONS	
FILE NAME	8344-1-SURVEY-7

**CAULFIELD & WHEELER, INC.**  
 CIVIL ENGINEERING - LAND PLANNING  
 LANDSCAPE ARCHITECTURE - SURVEYING  
 7900 GLADES ROAD - SUITE 100  
 BOCA RATON, FLORIDA 33434  
 PHONE (561) 392-1991 / FAX (561) 750-1452

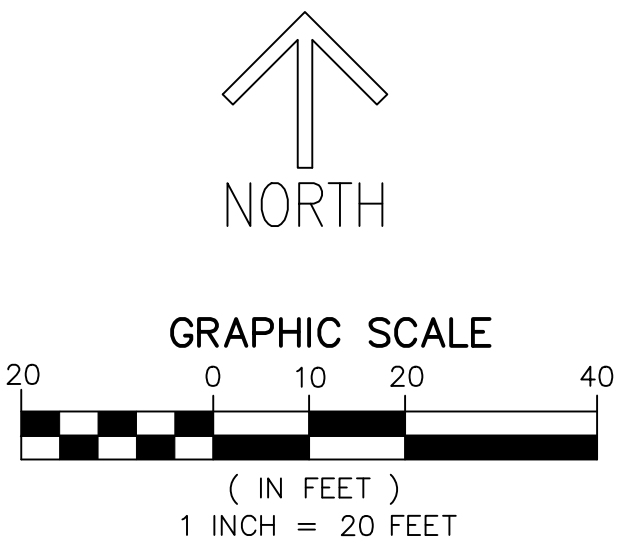


**THE FLO DELRAY**  
 BOUNDARY AND TOPOGRAPHIC SURVEY  
 A PORTION OF SECTION 16,  
 TOWNSHIP 46 SOUTH, RANGE 42 EAST,  
 CITY OF DELRAY BEACH,  
 PALM BEACH COUNTY, FLORIDA

DATE 4/10/2023  
 DRAWN BY rw  
 F.B./ PG. ELEC  
 SCALE AS SHOWN



JOB # 8344-1  
 SHT. NO. **2**  
 OF 5 SHEETS

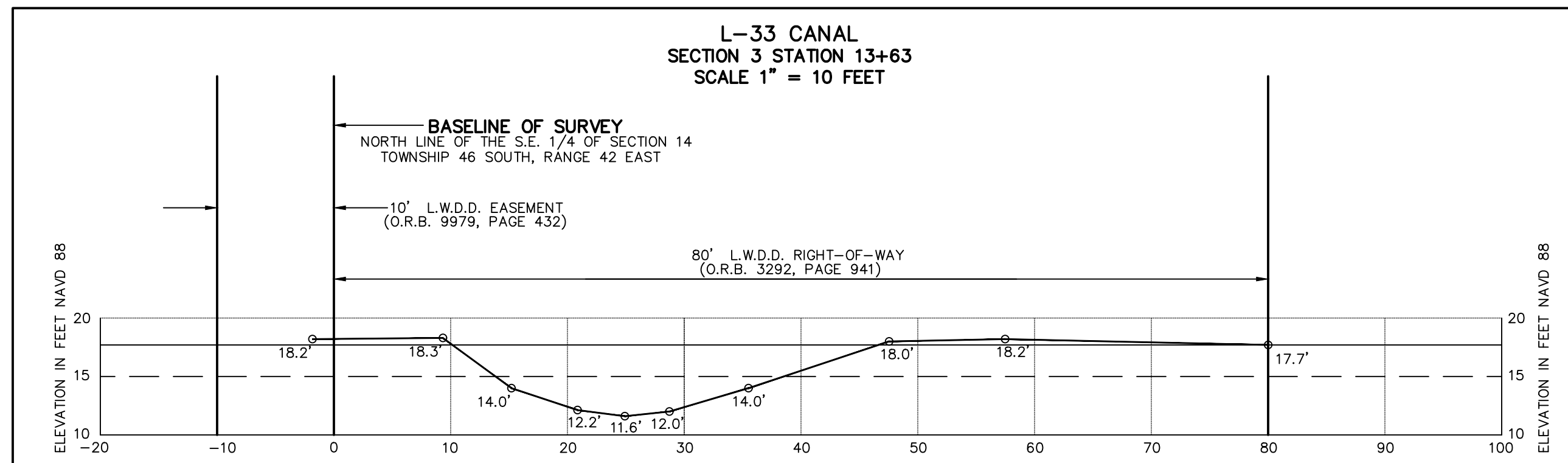
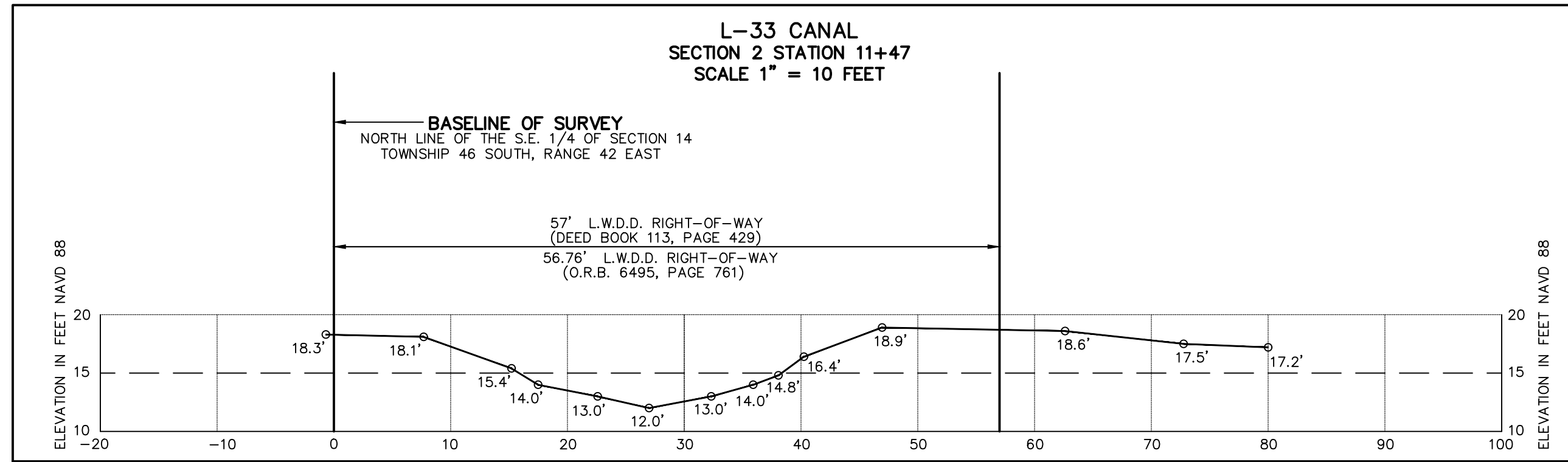
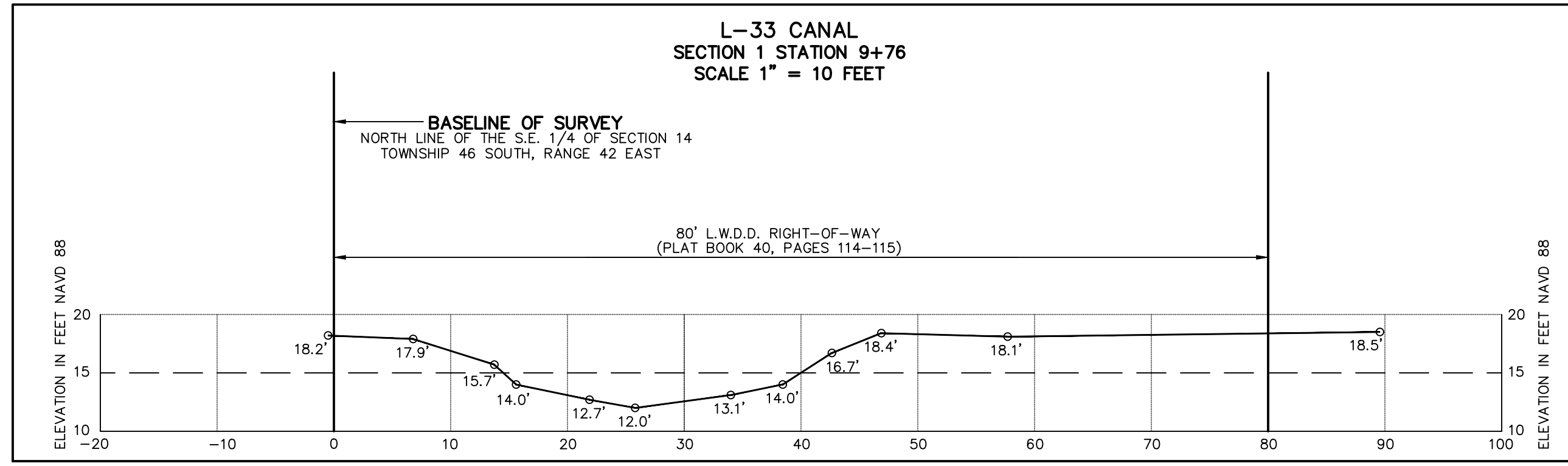


- LEGEND/ABBREVIATIONS**
- Δ - DELTA (CENTRAL ANGLE)
  - BLDG. - BUILDING
  - CONC. - CONCRETE
  - C.O. - CLEANOUT
  - (D) - OFFICIAL RECORD BOOK 18197, PAGE 16
  - DIP - DUCTILE IRON PIPE
  - ELEC - ELECTRIC
  - ELEV. - ELEVATION
  - FF - FINISHED FLOOR ELEVATION
  - FPL - FLORIDA POWER & LIGHT COMPANY
  - INV. - INVERT
  - L - ARC LENGTH
  - L.W.D.D. - LAKE WORTH DRAINAGE DISTRICT
  - MP - EXISTING METAL POST
  - O.R.B. - OFFICIAL RECORD BOOK
  - (PLAT) - PLAT OF FOUNTAINS AT DELRAY BEACH
  - PRM - DENOTES PERMANENT REFERENCE MONUMENT
  - R - RADIUS
  - RCP - REINFORCED CONCRETE PIPE
  - FH - EXISTING FIRE HYDRANT
  - WV - EXISTING WATER VALVE
  - WPP - EXISTING WOOD POWER POLE
  - CPP - EXISTING CONCRETE POWER POLE
  - CB - EXISTING CATCH BASIN
  - WELL - EXISTING WELL
  - WP - EXISTING 10" DIAMETER WOOD POST
  - ELEV. - EXISTING ELEVATION
  - ⊥ - EXISTING SIGN
  - x-x- - EXISTING FENCE LINE
  - s- - EXISTING SANITARY SEWER
  - sd- - EXISTING STORM DRAINAGE









TREE ID	DIAMETER	TREE TYPE
7	10	SABAL PALM
8	10	SABAL PALM
9	12	SABAL PALM
10	20	SLASH PINE
11	10	SLASH PINE
12	20	SLASH PINE
13	10	COCO PALM
14	9	COCO PALM
15	20	SLASH PINE
16	18	SLASH PINE
17	7	QUEEN PALM
18	16	SLASH PINE
19	15	SLASH PINE
20	16	SLASH PINE
21	16	SLASH PINE
22	14	SLASH PINE
23	13	SLASH PINE
24	14	SLASH PINE
25	18	SLASH PINE
26	24	SLASH PINE
27	10	PALM TREE
28	8	SLASH PINE
29	5	OAK TREE
30	7	COCO PALM
31	7	COCO PALM
32	8	COCO PALM
33	8	COCO PALM
34	7	COCO PALM
35	5	COCO PALM
36	7	COCO PALM
37	6	COCO PALM
38	6	COCO PALM
39	16	SLASH PINE
40	11	SABAL PALM
41	16	SLASH PINE
42	7	COCO PALM
43	10	COCO PALM
44	10	COCO PALM
45	10	SLASH PINE
46	24	SLASH PINE
47	8	QUEEN PALM
48	12	SLASH PINE
49	9	SLASH PINE
50	18	SLASH PINE
51	16	SABAL PALM
52	16	SLASH PINE
53	10	SLASH PINE
54	16	SLASH PINE
55	14	SLASH PINE
56	26	SLASH PINE
57	10	SLASH PINE
58	24	SLASH PINE
59	10	COCO PALM
60	18	SLASH PINE
61	10	COCO PALM
62	24	SLASH PINE
63	10	SLASH PINE
64	9	COCO PALM
65	8	COCO PALM
66	8	COCO PALM
67	8	COCO PALM
68	8	COCO PALM
69	12	SLASH PINE
70	10	COCO PALM
71	14	SLASH PINE
72	9	COCO PALM
73	14	SLASH PINE
74	18	SLASH PINE
75	14	SLASH PINE
76	14	SLASH PINE

TREE ID	DIAMETER	TREE TYPE
77	16	SABAL PALM
78	14	SLASH PINE
79	14	SLASH PINE
80	14	SLASH PINE
81	14	SLASH PINE
82	18	SLASH PINE
83	14	SABAL PALM
84	12	SLASH PINE
85	12	SLASH PINE
86	10	COCO PALM
87	8	FAN PALM
88	10	COCO PALM
89	10	COCO PALM
90	10	COCO PALM
91	16	SLASH PINE
92	10	COCO PALM
93	10	COCO PALM
94	10	COCO PALM
95	16	SLASH PINE
96	14	SABAL PALM
97	7	COCO PALM
98	14	SLASH PINE
99	13	SLASH PINE
100	12	SABAL PALM
101	16	SLASH PINE
102	11	SABAL PALM
103	20	SLASH PINE
104	14	SABAL PALM
105	8	SLASH PINE
106	12	SLASH PINE
107	6	SLASH PINE
108	12	SLASH PINE
109	14	SLASH PINE
110	14	SLASH PINE
111	14	SLASH PINE
112	16	SLASH PINE
113	10	COCO PALM
114	10	COCO PALM
115	12	SABAL PALM
116	12	SABAL PALM
117	10	SLASH PINE
118	15	SLASH PINE
119	16	SLASH PINE
120	13	SLASH PINE
121	10	SLASH PINE
122	12	SABAL PALM
123	11	SABAL PALM
124	12	SABAL PALM
125	12	SABAL PALM
126	12	SABAL PALM
127	12	SABAL PALM
128	12	SABAL PALM
129	12	SABAL PALM
130	16	SLASH PINE
131	12	SABAL PALM
132	12	SABAL PALM
133	12	SLASH PINE
134	16	SLASH PINE
135	14	SLASH PINE
136	14	SLASH PINE
137	12	SLASH PINE
138	12	SLASH PINE
139	8	SLASH PINE
140	14	SLASH PINE
141	14	SLASH PINE
142	14	SLASH PINE
143	14	SLASH PINE
144	10	SABAL PALM
145	14	SLASH PINE
146	14	SLASH PINE

TREE ID	DIAMETER	TREE TYPE
147	14	SLASH PINE
148	14	SABAL PALM
149	22	SLASH PINE
150	22	SLASH PINE
151	14	SLASH PINE
152	16	SLASH PINE
153	16	SLASH PINE
154	14	SLASH PINE
155	10	SLASH PINE
156	12	SLASH PINE
157	14	SLASH PINE
158	14	SLASH PINE
159	12	SLASH PINE
160	12	SLASH PINE
161	16	SLASH PINE
162	14	SLASH PINE
163	12	SABAL PALM
164	16	SABAL PALM
165	12	SLASH PINE
166	16	SLASH PINE
167	18	SLASH PINE
168	16	SLASH PINE
169	14	SLASH PINE
170	14	SLASH PINE
171	10	SABAL PALM
172	22	SLASH PINE
173	16	SLASH PINE
174	14	SLASH PINE
175	16	SLASH PINE
176	16	SLASH PINE
177	16	SLASH PINE
178	14	SLASH PINE
179	14	SLASH PINE
180	14	SLASH PINE
181	12	SLASH PINE
182	14	SLASH PINE
183	14	SLASH PINE
184	14	SLASH PINE
185	16	SLASH PINE
186	12	SABAL PALM
187	22	SLASH PINE
188	12	SABAL PALM
189	10	SABAL PALM
190	14	SLASH PINE
191	16	SLASH PINE
192	12	SLASH PINE
193	16	SLASH PINE
194	16	SLASH PINE
195	14	SLASH PINE
196	18	SLASH PINE
197	16	SLASH PINE
198	16	SLASH PINE
199	18	SLASH PINE
200	14	SLASH PINE
201	12	SLASH PINE
202	8	SABAL PALM
203	14	SLASH PINE
204	10	SABAL PALM
205	12	SLASH PINE
206	10	COCO PALM
207	8	COCO PALM
208	8	COCO PALM
209	8	COCO PALM
210	8	COCO PALM
211	8	COCO PALM
212	8	COCO PALM
213	12	SLASH PINE
214	24	SLASH PINE
215	6	COCO PALM
216	6	COCO PALM

TREE ID	DIAMETER	TREE TYPE
217	6	COCO PALM
218	8	COCO PALM
219	8	COCO PALM
220	6	COCO PALM
221	6	COCO PALM
222	6	COCO PALM
223	8	COCO PALM
224	8	COCO PALM
225	8	COCO PALM
226	8	COCO PALM
227	16	SLASH PINE
228	8	COCO PALM
229	10	SABAL PALM
230	14	SLASH PINE
231	14	SLASH PINE
232	10	COCO PALM
233	10	COCO PALM
234	12	COCO PALM
235	14	SLASH PINE
236	12	SLASH PINE
238	14	SABAL PALM
239	14	SLASH PINE
240	14	SLASH PINE
241	13	SLASH PINE
242	12	SABAL PALM
243	11	SABAL PALM
244	14	SLASH PINE
245	14	SLASH PINE
246	24	SLASH PINE
247	12	SABAL PALM
248	12	SABAL PALM
249	12	SABAL PALM
250	18	SLASH PINE
251	18	SLASH PINE
252	12	SABAL PALM
253	12	SLASH PINE
254	18	SLASH PINE
255	10	PALM TREE
256	10	PALM TREE
257	10	PALM TREE
258	14	SLASH PINE
259	14	SLASH PINE
260	14	SLASH PINE
261	16	SLASH PINE
262	14	SLASH PINE
263	18	SLASH PINE
264	14	SLASH PINE
265	14	SLASH PINE
266	20	SLASH PINE
300	8	GUMBO LI
301	7	GUMBO LI
302	5	PLUMERIA
303	7	GUMBO LI
304	9	GUMBO LI
305	5	GUMBO LI
306	6	PLUMERIA
307	7	GUMBO LI
308	7	GUMBO LI
309	5	PLUMERIA
310	7	GUMBO LI
311	6	GUMBO LI
312	6	GUMBO LI
313	5	GUMBO LI
314	7	GUMBO LI
315	5	GUMBO LI
316	7	GUMBO LI
317	4	GUMBO LI
318	5	GUMBO LI
319	9	GUMBO LI

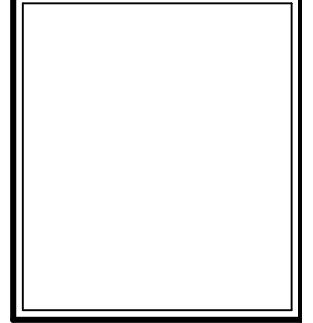
TREE ID	DIAMETER	TREE TYPE
25A	6	GUMBO LI
26A	5	PLUMERIA
26B	5	PLUMERIA
28A	9	GUMBO LI
31A	6	COCO PALM
44A	10	COCO PALM
46A	10	QUEEN PALM
46B	10	QUEEN PALM
48A	8	COCO PALM
58A	10	QUEEN PALM
89A	10	COCO PALM
99A	8	GUMBO LI
99B	8	GUMBO LI
100A	9	WASHING
160A	10	QUEEN PALM
164A	13	SLASH PINE
164B	11	SLASH PINE
171A	14	COCOPALM
205A	6	COCO PALM
206A	5	GUMBO LI
224A	8	GUMBO LI
236A	4	PLUMERIA

DATE	04/10/2023
REVISIONS	UPDATE TREES
FILE NAME	8344-1-SURVEY-7

**CAULFIELD & WHEELER, INC.**  
 CIVIL ENGINEERING - LAND PLANNING  
 LANDSCAPE ARCHITECTURE - SURVEYING  
 7900 GLADES ROAD - SUITE 100  
 BOCA RATON, FLORIDA 33434  
 PHONE (561) 392-1991 / FAX (561) 750-1452

**THE FLO DELRAY**  
 BOUNDARY AND TOPOGRAPHIC SURVEY  
 A PORTION OF SECTION 16,  
 TOWNSHIP 46 SOUTH, RANGE 42 EAST,  
 CITY OF DELRAY BEACH,  
 PALM BEACH COUNTY, FLORIDA

DATE 4/10/2023  
 DRAWN BY rw  
 F.B./ PG. ELEC  
 SCALE AS SHOWN



JOB # 8344-1  
 SHT. NO. 5  
 OF 5 SHEETS