

# Arts WAREHOUSE

A Project of the Delray Beach CRA



DELRAY BEACH CRA  
COMMUNITY REDEVELOPMENT AGENCY

## JUNE - JULY 2025 REPORT

### Events

**First Friday Art Walk - May 2<sup>nd</sup> (159 Visitors)**  
**Open Studio Days with the Cultural Council  
for Palm Beach County - May 17<sup>th</sup> & 18<sup>th</sup>**  
**Co-Working Studio - Weekly**

### Art Education

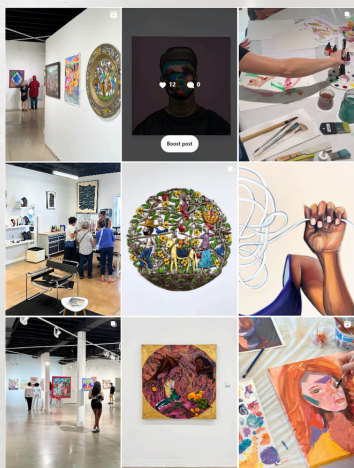


**20 Workshops  
scheduled in June**

**19 Workshops  
scheduled in July**

[Click Here](#) for Workshop Registration

### Social Media Outreach



**May 9 - June 22  
Insights:**

Accounts Reached 10.8k

Followers 7,740 +117

Views 43.9K



[artswarehouse.org](https://artswarehouse.org)



[@artswarehousedelray](https://www.instagram.com/artswarehousedelray)

### Current Exhibitions

**Kilti**



**MAY 2 -  
JUNE 28,  
2025**

**Revisited**

**Haitian Art**

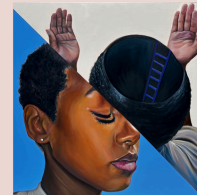
**New on View**



**Back Room Gallery**

**Unveiled  
Thoughts**

June 6 - July 19<sup>th</sup>, 2025



**NEW East Room Gallery**

**Shows Opening July 10th**



**summer heat**

Reflecting on the multifaceted nature of the season when days  
are longest and darkness is shortest.

July 10th - August 23rd, 2025

**Beyond  
Art &  
Architecture**

July 10 - Sep 5, 2025

### Resident Artist Program



**14 of 15 Studios occupied**

### Arts Warehouse

**Regular Business Hours for visitors are:**

**Wednesday - Friday 10am - 7pm,**

**Saturday 10am - 5pm, or by appointment**



This Delray Beach Community Redevelopment Agency rehabilitated warehouse is located on Artist Alley in the Pineapple Grove district opened in late 2017. Arts Warehouse is an Art space that includes studio artists, holds gallery exhibitions, visual art workshops, professional development opportunities, talks, and special events. The 15,000 sq. ft. space is a catalyst for economic development and growth within the Pineapple Grove Arts District and the community as a whole, supporting artists as small businesses.

**Click here** to learn more about the CRA's Redevelopment Efforts