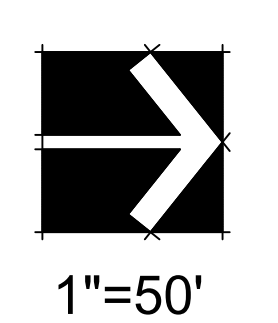
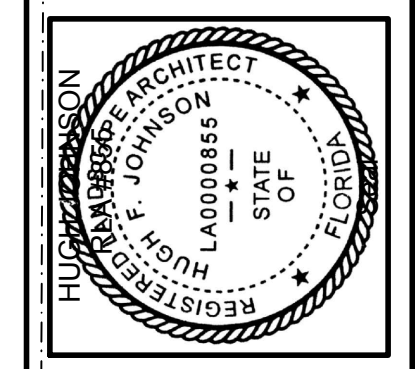


TREE DISPOSITION LEGEND	
	TREES/PALMS TO REMAIN
	TREES/PALMS TO BE RELOCATED
	TREES/PALMS TO BE REMOVED



**AAL**  
 Architectural Alliance Landscape  
 612 SW 4th Ave., Fort Lauderdale, FL 33315 LCC000237  
 TEL: 954-764-8858 E.M.A.I.L.:  
 H. J. O. N. N. S. O. S. O. S. L. E. S. G. I. I. I. S. S. E.



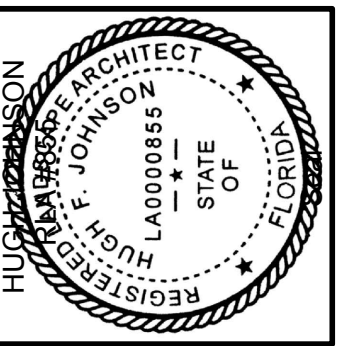
Revision Dates
TAC COMMENTS 08-06-21
TAC COMMENTS 10-13-21
TAC COMMENTS 1-18-22
TAC COMMENTS 2-28-22
TAC REVISIONS 4-27-22
TAC REVISIONS 1-09-23
TAC REVISIONS 2-13-23

LANDSCAPE PLAN

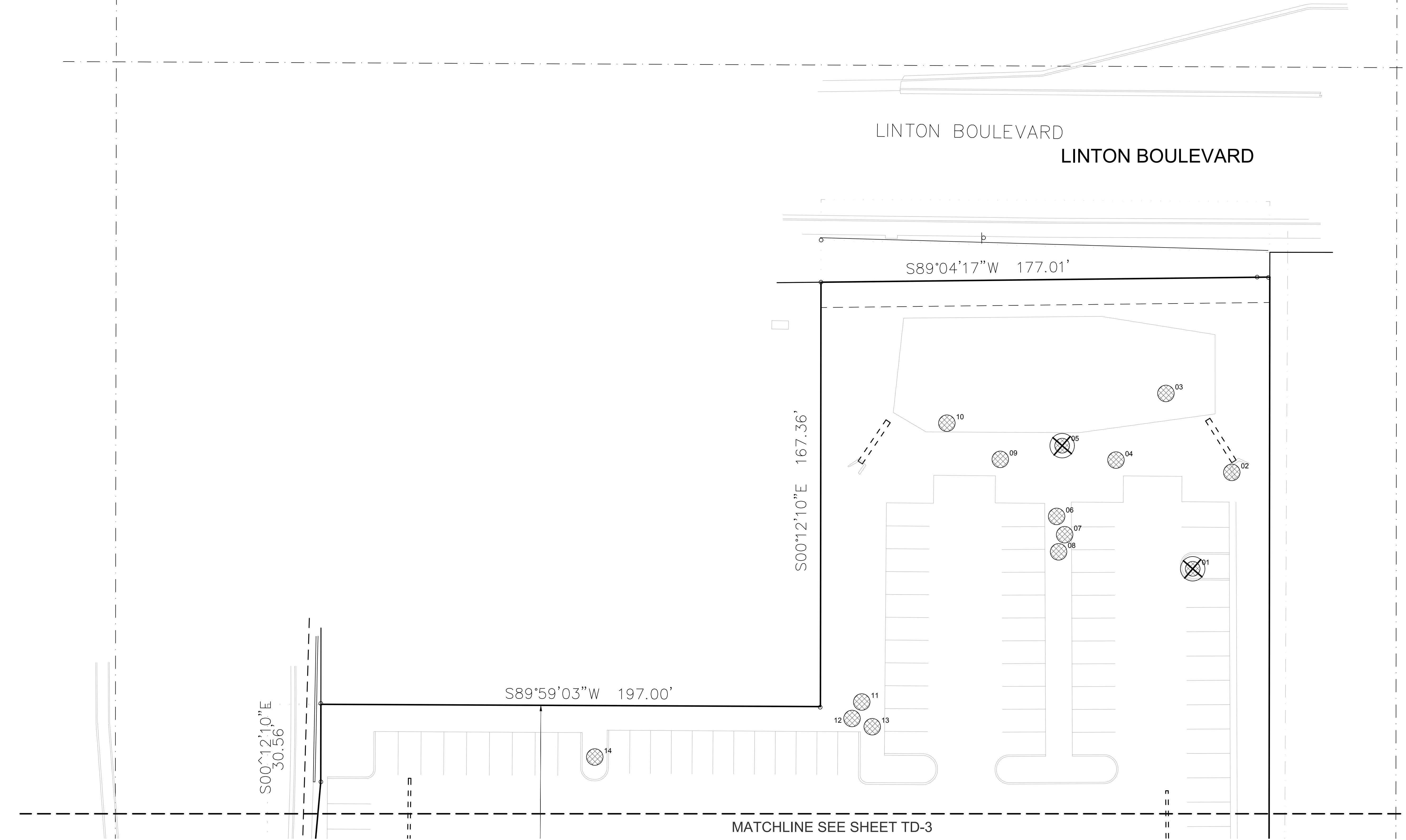
**DELRAY CENTRAL MULTI-FAMILY**  
 G&C Arbors Investors, LLC  
 Delray Beach, Florida

Sheet Description	TREE DISPOSITION PLAN
Release Date	04-01-2021
Project Number	2111
Drawing Number	<b>TD-1</b>
Sheet 1 of 6	

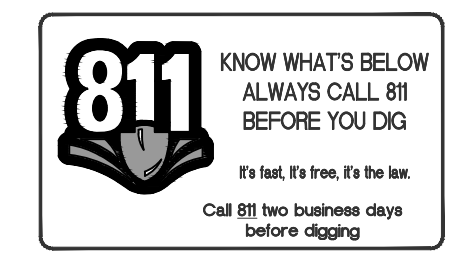
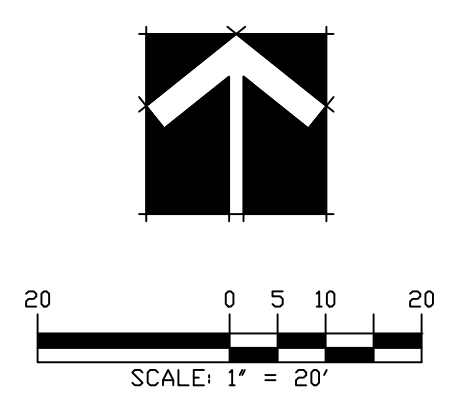
TREE DISPOSITION LEGEND	
	TREES/PALMS TO REMAIN
	TREES/PALMS TO BE RELOCATED
	TREES/PALMS TO BE REMOVED



Revision Dates	
TAC COMMENTS 08-06-21	
TAC COMMENTS 10-13-21	
TAC COMMENTS 1-18-22	
TAC COMMENTS 2-28-22	
TAC REVISIONS 4-27-22	
TAC REVISIONS 1-09-23	
TAC REVISIONS 2-13-23	



LANDSCAPE PLAN  
**DELRAY CENTRAL MULTI-FAMILY**  
 G&C Arbors Investors, LLC  
 Delray Beach, Florida

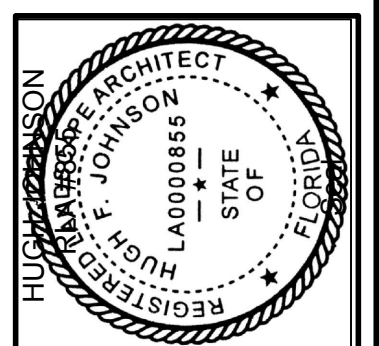
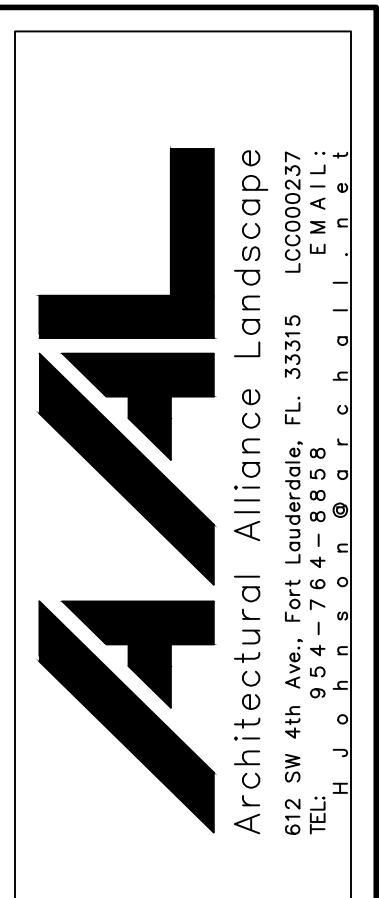


MATCHLINE SEE SHEET TD-3

Sheet Description	TREE DISPOSITION PLAN
Release Date	04-01-2021
Project Number	2111
Drawing Number	<b>TD-2</b>
Sheet 2 of 6	

MATCHLINE SEE SHEET TD-2

TREE DISPOSITION LEGEND	
	TREES/PALMS TO REMAIN
	TREES/PALMS TO BE RELOCATED
	TREES/PALMS TO BE REMOVED



Revision Dates	
TAC COMMENTS 08-06-21	
TAC COMMENTS 10-13-21	
TAC COMMENTS 1-18-22	
TAC REVISIONS 2-28-22	
TAC REVISIONS 4-27-22	
TAC REVISIONS 1-09-23	
TAC REVISIONS 2-13-23	

SOUTH CONGRESS AVENUE

CSX RAILROAD

S01°04'12"W 225.12'  
 S04°53'36"W 180.13'  
 S01°04'12"W 225.12'  
 S01°04'12"W 225.12'

N00°12'10"W 821.09'

MATCHLINE SEE SHEET TD-4

SCALE: 1" = 20'

LANDSCAPE PLAN  
**DELRAY CENTRAL MULTI-FAMILY**  
 G&C Arbors Investors, LLC  
 Delray Beach, Florida

Sheet Description	TREE DISPOSITION PLAN
Release Date	04-01-2021
Project Number	2111
Drawing Number	<b>TD-3</b>
Sheet 3 of 6	



SOUTH CONGRESS AVENUE

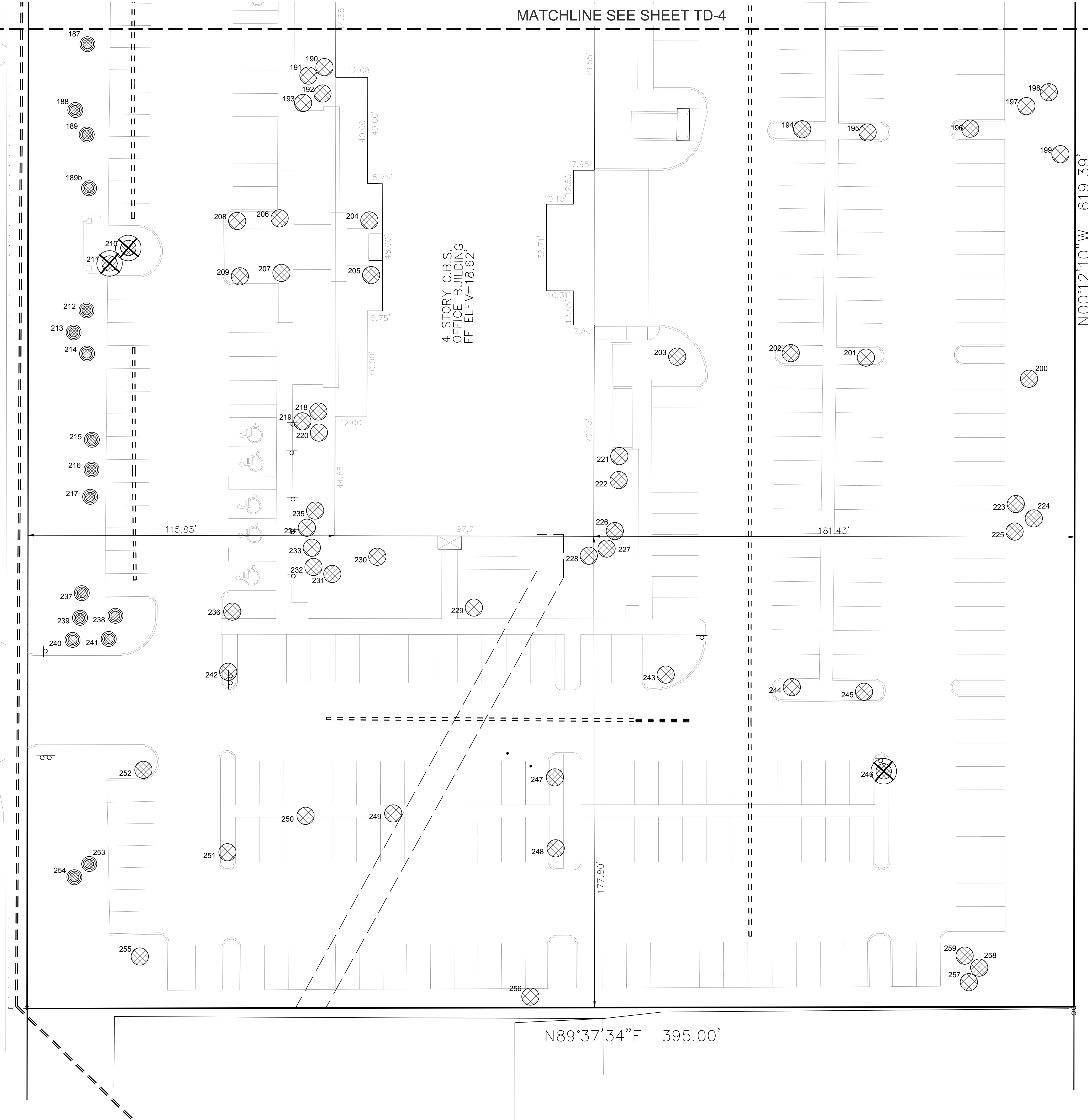
S00°12'10"E 472.28'

MATCHLINE SEE SHEET TD-4

N00°12'10"W 619.39'

CSX RAILROAD

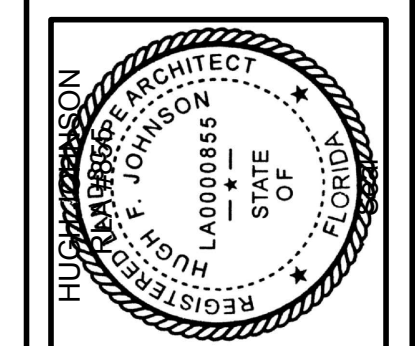
4 STORY C.B.S. OFFICE BUILDING  
FF ELEV=18.62



TREE DISPOSITION LEGEND

- TREES/PALMS TO REMAIN
- TREES/PALMS TO BE RELOCATED
- TREES/PALMS TO BE REMOVED

**AAL**  
 Architectural Alliance Landscape  
 612 SW 4th Ave., Fort Lauderdale, FL 33315 LCC000237  
 TEL: 954-764-8858 E.M.A.L.  
 H. J. O'NEILL, P.E., L.C.S., F.L.S., F.P.S., F.C.S.



Revision Dates	
TAC COMMENTS 08-06-21	
TAC COMMENTS 10-13-21	
TAC COMMENTS 1-18-22	
TAC REVISIONS 2-29-22	
TAC REVISIONS 4-27-22	
TAC REVISIONS 1-09-23	
TAC REVISIONS 2-13-23	

LANDSCAPE PLAN  
**DELRAY CENTRAL MULTI-FAMILY**  
 G&C Arbors Investors, LLC  
 Delray Beach, Florida

Sheet Description  
**TREE DISPOSITION PLAN**

Release Date  
 04-01-2021

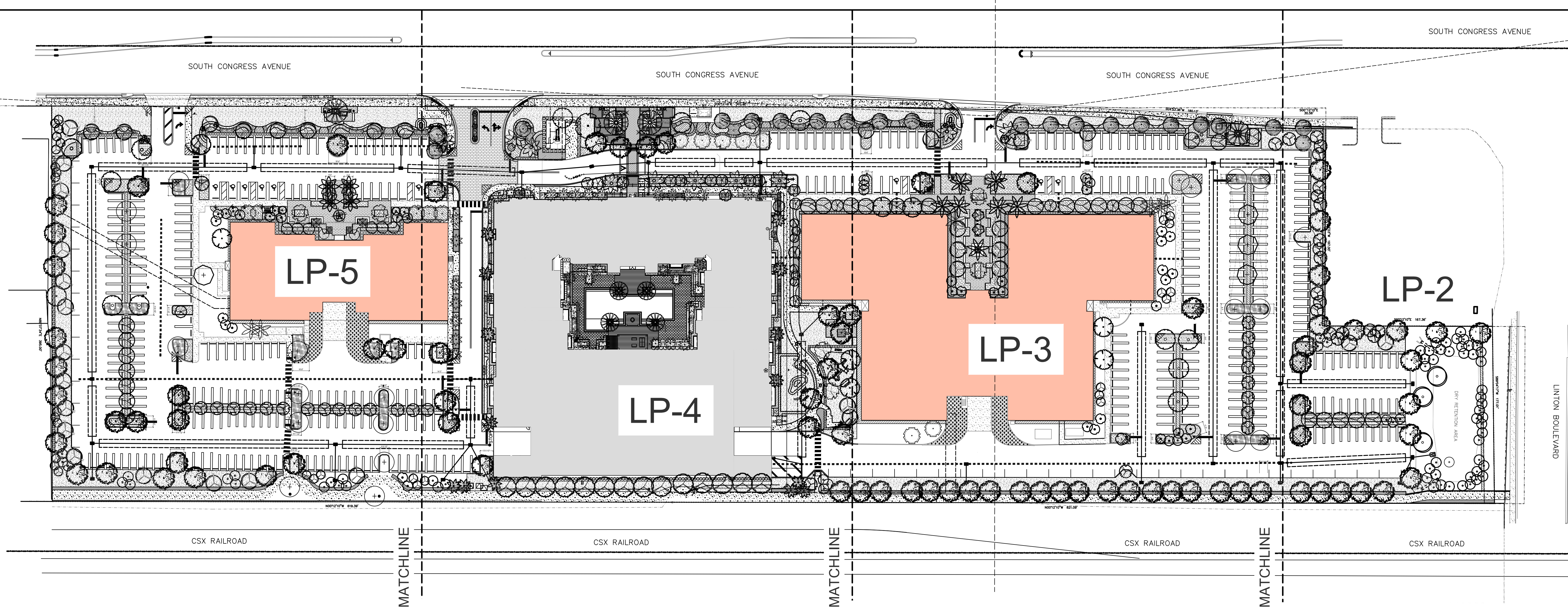
Project Number  
 2111

Drawing Number  
**TD-5**  
 Sheet 5 of 6

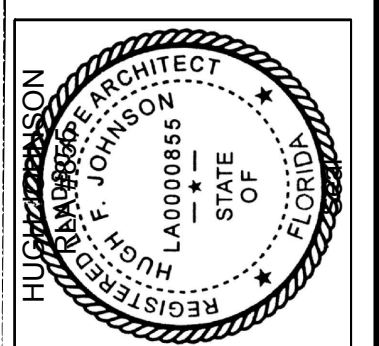
SCALE: 1" = 20'

**811** KNOW WHAT'S BELOW  
 ALWAYS CALL 811  
 BEFORE YOU DIG  
 It's fast. It's free. It's the law.  
 Call 811 two business days  
 before digging.





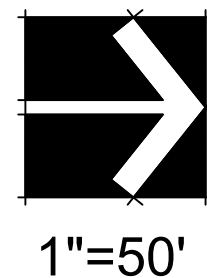
- ALL PLANT MATERIAL SHALL BE FLORIDA #1 GRADE OR BETTER.
- MULCH SHALL BE APPLIED TO A MINIMUM DEPTH OF THREE (3) INCHES IN ALL PLANTING BEDS.
- ALL PROHIBITED PLANT SPECIES SHALL BE ERADICATED FROM THE SITE.
- ALL LANDSCAPE AREAS SHALL BE PROVIDED WITH AN IRRIGATION SYSTEM, AUTOMATICALLY OPERATED, TO PROVIDE COMPLETE COVERAGE TO ALL PLANT MATERIALS AND GRASS TO BE MAINTAINED.
- SOD AND IRRIGATION SHALL BE PROVIDED WITHIN THE UNPAVED PORTION OF THE RIGHT-OF-WAY ADJACENT TO THE PROPERTY LINE.
- REINFORCED CONCRETE CURBING AT LEAST SIX (6) INCHES IN HEIGHT SHALL BE PROVIDED AROUND ALL LANDSCAPE ISLANDS AND AS A SEPARATOR BETWEEN ALL LANDSCAPED AREAS THAT ARE ADJACENT TO VEHICULAR USE AREAS UNLESS SUCH CURBING WILL INTERFERE WITH THE DRAINAGE.
- ANY TREES OR SHRUBS PLACED WITHIN WATER SEWER OR DRAINAGE EASEMENTS SHALL CONFORM TO THE CITY OF DELRAY BEACH STANDARD DETAILS LD 1.1 AND LD 1.2.
- TREE DIVERSIFICATION REQUIRES +41 TREES FOR THE PROPERTY- AT LEAST FIVE (5) SPECIES ARE PROVIDED AS REQUIRED IN LDR Section 4.6.16 (E)(5)



Revision Dates
TAC COMMENTS 08-06-21
TAC COMMENTS 10-13-21
TAC COMMENTS 1-18-22
TAC REVISIONS 2-23-22
TAC REVISIONS 4-27-22
TAC REVISIONS 5-10-22
TAC REVISIONS 5-07-22
TAC REVISIONS 2-13-23

LANDSCAPE PLAN  
**DELRAY CENTRAL MULTI-FAMILY**  
 G&C Arbors Investors, LLC  
 Delray Beach, Florida

Sheet Description
LANDSCAPE PLAN
Release Date
04-01-2021
Project Number
2111
Drawing Number
<b>LP-1</b>
Sheet 1 of 8



PLANT SCHEDULE		
TREES	BOTANICAL NAME	COMMON NAME
BV	BULNESIA ARBOREA	VERAWOOD
CG	CAESALPINIA GRANADILLO	BRIDAL VEIL TREE
CO	CHRYSOPHYLLUM OLIVIFORME	SATINLEAF
CR2	CLUSIA ROSEA 'PITCH APPLE'	PITCH APPLE
CE	CONOCARPUS ERECTUS	BUTTONWOOD
CS	CONOCARPUS ERECTUS SERICEUS	SILVER BUTTON WOOD
DR	DELONIX REGIA	ROYAL POINCIANA
ED	ELAEOCARPUS DECIPIENS	JAPANESE BLUEBERRY TREE
EF	EUGENIA FOETIDA	SPANISH STOPPER
LI	LAGERSTROEMIA INDICA 'MUSKOGEE'	MUSKOGEE GRAPE MYRTLE 'STANDARD'
LN	LAGERSTROEMIA INDICA 'NATCHEZ'	WHITE GRAPE MYRTLE
QV	QUERCUS VIRGINIANA	LIVE OAK
SM	SWIETENIA MAHAGONI	MAHOGANY
EXISTING PALMS		
BOTANICAL NAME		
COMMON NAME		
PRE	PHOENIX ROEBELENI	PYGMY DATE PALM
REE	ROYSTONIA ELATA	ROYAL PALM
SPE	SABAL PALMETTO	CABBAGE PALMETTO
SPR	SABAL PALMETTO	CABBAGE PALMETTO
SQE	SYAGRUS ROMANZOFFIANA	QUEEN PALM
EXISTING TREES		
BOTANICAL NAME		
COMMON NAME		
BBE	BUCIDA BUCERAS	BLACK OLIVE TREE
CGE	CALOPHYLLUM BRASILIENSE	BRAZILIAN BEAUTYLEAF
FA	FICUS AUREA	STRANGLER FIG
FBE	FICUS BENJAMINA	WEeping FIG
MPE	MELALEUCA VIMINALIS	WEEPING BOTTLEBRUSH
QNE	QUERCUS VIRGINIANA	SOUTHERN LIVE OAK
SME	SWIETENIA MAHOGANY	MAHOGANY
TCE	TABEBUIA CARAIBA	SILVER TRUMPET
TIE	TABEBUIA HETEROPHYLLA	PINK TRUMPET TREE
PALM TREES		
BOTANICAL NAME		
COMMON NAME		
CHT	COCOS NUCIFERA	COCONUT PALM 'GREEN MALAYAN'
PH2	PHOENIX DACTYLIFERA 'MEDJOL'	MEDJOL DATE PALM
PH3	PHOENIX RECLINATA X ROEBELENI	SENEGAL & PYGMY DATE HYBRID
PH4	PHOENIX ROEBELENI	PYGMY DATE PALM
PH5	PHOENIX SYLVESTRIS	WILD DATE PALM
PH6	PHYCHOSPERMA ELEGANS	SOLITAIRE PALM
PH7	ROYSTONIA REGIA	ROYAL PALM
PH8	VEITCHIA MONTGOMERYANA	MONTGOMERY PALM
SHRUBS		
BOTANICAL NAME		
COMMON NAME		
ALP	ALPINIA PURPURATA 'EILEEN McDONALD'	PINK GINGER
ALZ	ALPINIA ZERUMBET 'VARIEGATA'	VARIEGATED SHELL GINGER
CHC	CHAMAEROPS HUMILIS CERIFERA	MEDITERRANEAN FAN PALM
CHS	CHAMAEROPS HUMILIS CERIFERA 'SILVER SELECT'	SILVER MEDITERRANEAN FAN PALM
CLG	CLUSIA GUTTIFERA	SMALL-LEAF CLUSIA
COA	CORDYLINE FRUTICOSA 'AUNTIE LOU'	PINK TI PLANT
COB	CORDYLINE FRUTICOSA 'BOLERO'	BOLERO TI PLANT
CRN	CRINUM AUGUSTUM 'QUEEN EMMA'	'QUEEN EMMA' CRINUM
DIO	DIOON SPINULOSUM	CYCAD
ELD	ELAEOCARPUS DECIPIENS 'MONPROUD'	JAPANESE BLUEBERRY TREE DWARF
GLM	GARDENIA AUGUSTA 'MIAMI SUPREME'	MIAMI SUPREME GARDENIA

HS2	HIBISCUS ROSA-SINENSIS 'SEMINOLE PINK'	SEMINOLE PINK HIBISCUS
JIP	JATROPHA INTEGERRIMA	SPICY JATROPHA
LCR	LEEAE COCCINEA 'RUBRA'	RED LEEA
NPP	NEOREGELA X 'PETRA'	PINK BROMELIAD
PMM	PODOCARPUS MACROPHYLLUS MAKI	SHRUBBY YEW
REL	RHAPIS EXCELSA	LADY PALM
SBC	SANSEVIERIA TRIFASCIATA 'BLACK CORAL'	BLACK CORAL SANSEVIERIA
TMS	THRINAX MORRISII	KEY THATCH PALM
SHRUB AREAS		
BOTANICAL NAME		
COMMON NAME		
BSD	BOLGANVILLEA SPP.	DWARF BOLGANVILLEA
CIR	CHRYSOBALANUS ICACO 'REDTIP'	RED TIP COCOPLUM
CIE	CHRYSOBALANUS ICACO 'REDTIP'	RED TIP COCOPLUM
CGS	CLUSIA GUTTIFERA	SMALL-LEAF CLUSIA
CVG	CODIAEUM VARIEGATUM 'GOLDEN DUST'	GOLD DUST CROTON
CVP	CODIAEUM VARIEGATUM 'PETRA'	BRAVO CROTON
CES	CONOCARPUS ERECTUS SERICEUS	SILVER BUTTON WOOD
DEG	DURANTA ERECTA 'GOLD MOUND'	GOLD MOUND DURANTA
FIE	FICUS BENJAMINA	FICUS HEDGE EXISTING
FME	FICUS MICROCARPA	FICUS HEDGE EXISTING
GGT	GALPHIMIA GLAUCA	THRYSALIS
ING	IXORA COCCINEA 'NORA GRANT'	NORA GRANT IXORA
MCS	MYRCIANTHES FRAGRANS 'COMPACTA'	COMPACT SIMPSON'S STOPPER
PBM	PHILODENDRON X 'BURLIE MARX'	PHILODENDRON
PRC	PHILODENDRON X 'ROJO CONGO'	ROJO CONGO PHILODENDRON
PMP	PODOCARPUS MACROPHYLLUS	PODOCARPUS
SAG	SCHEFFLERA ARBORICOLA 'DWARF'	DWARF SCHEFFLERA
SGC	SCHEFFLERA ARBORICOLA 'GOLD CAPELLA'	GOLD CAPELLA ARBORICOLA
SAT	SCHEFFLERA ARBORICOLA 'TRINETTE'	SCHEFFLERA
SBS	SPARTINA BAKERI	SAND CORD GRASS
TAA	TABERNAEMONTANA AUSTRALIS	PINWHEEL JASMINE
GROUND COVERS		
BOTANICAL NAME		
COMMON NAME		
AGR	ARACHIS GLABRATA	PERENNIAL PEANUT 'LARGE LEAF'
ADM	ASPARAGUS DENSIFLORUS 'MYERS'	FOXTAIL FERN
CEM	CARISSA MACROCARPA 'EMERALD BLANKET'	EMERALD BLANKET CARISSA
CHH	CHRYSOBALANUS ICACO 'HORIZONTALIS'	HORIZONTAL COCOPLUM
CC	CURCULIGO CAPITULATA	PALM GRASS
DTB	DIANELLA TASMANICA	BLUEBERRY FLAX LILY
FMG	FICUS MICROCARPA 'GREEN ISLAND'	GREEN ISLAND FICUS
IVD	ILEX VOMITORIA 'STOKES DWARF'	DWARF YAUPON HOLLY
ICM	IXORA COCCINEA 'MAUI SUNSET'	MAUI SUNSET DWARF IXORA
JJ	JASMINUM VOLUBILE	WAX JASMINE
MSS	MICROSORUM SCOLOPENDRUM	WART FERN
NR	NEOMARICA CAERULEA 'REGINA'	GIANT WALKING IRIS
NES	NEPHROLEPIS EXALTATA	BOSTON FERN
SR	SERENOA REPENS	SAW PALMETTO
TMV	TRACHELOSPERMUM ASIATICUM 'MINIMA VARIEGATA'	MINIMA VARIEGATED JASMINE
TAM	TRACHELOSPERMUM ASIATICUM 'MINIMA'	MINIMA JASMINE
TMI	TRIMEZIA MARTINICENSIS	YELLOW WALKING IRIS
ZP	ZAMIA PUMILA	COONTIE CYCAD
SOD/SEED		
BOTANICAL NAME		
COMMON NAME		
SOD	STENOTAPHRUM SECUNDATUM 'FLORATAM'	FLORATAM ST. AUGUSTINE SOD
TALL GROUND COVERS		
BOTANICAL NAME		
COMMON NAME		
MCG	MUHLENBERGIA CAPILLARIS	PINK MUHLY GRASS
PAZ	PENNISETUM SETACEUM 'ALBA'	WHITE FOUNTAIN GRASS
TFG	TRIPSACUM FLORIDANA	FLORIDA GAMMA GRASS

SOUTH CONGRESS AVENUE

LINTON BOULEVARD

CSX RAILROAD

NOTE: REPAIR ALL SOD AREAS DAMAGED DURING CONSTRUCTION (TYP.)

OVERHEAD POWER LINES

10' SIDEWALK

LIGHT FIXTURE

DRAINAGE

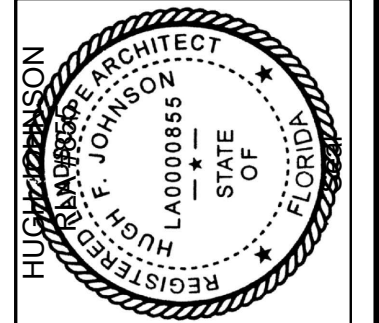
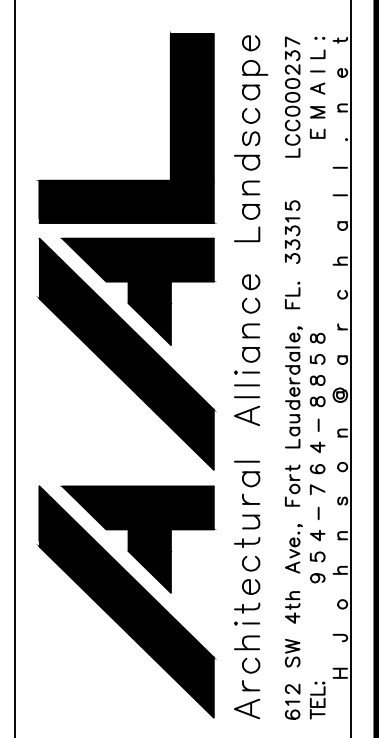
EXISTING PARKING

DRY RETENTION AREA

NOTE: REPAIR ALL SOD AREAS DAMAGED DURING CONSTRUCTION (TYP.)

LIGHT MATCHLINE SEE SHEET LP-3

1"=20'



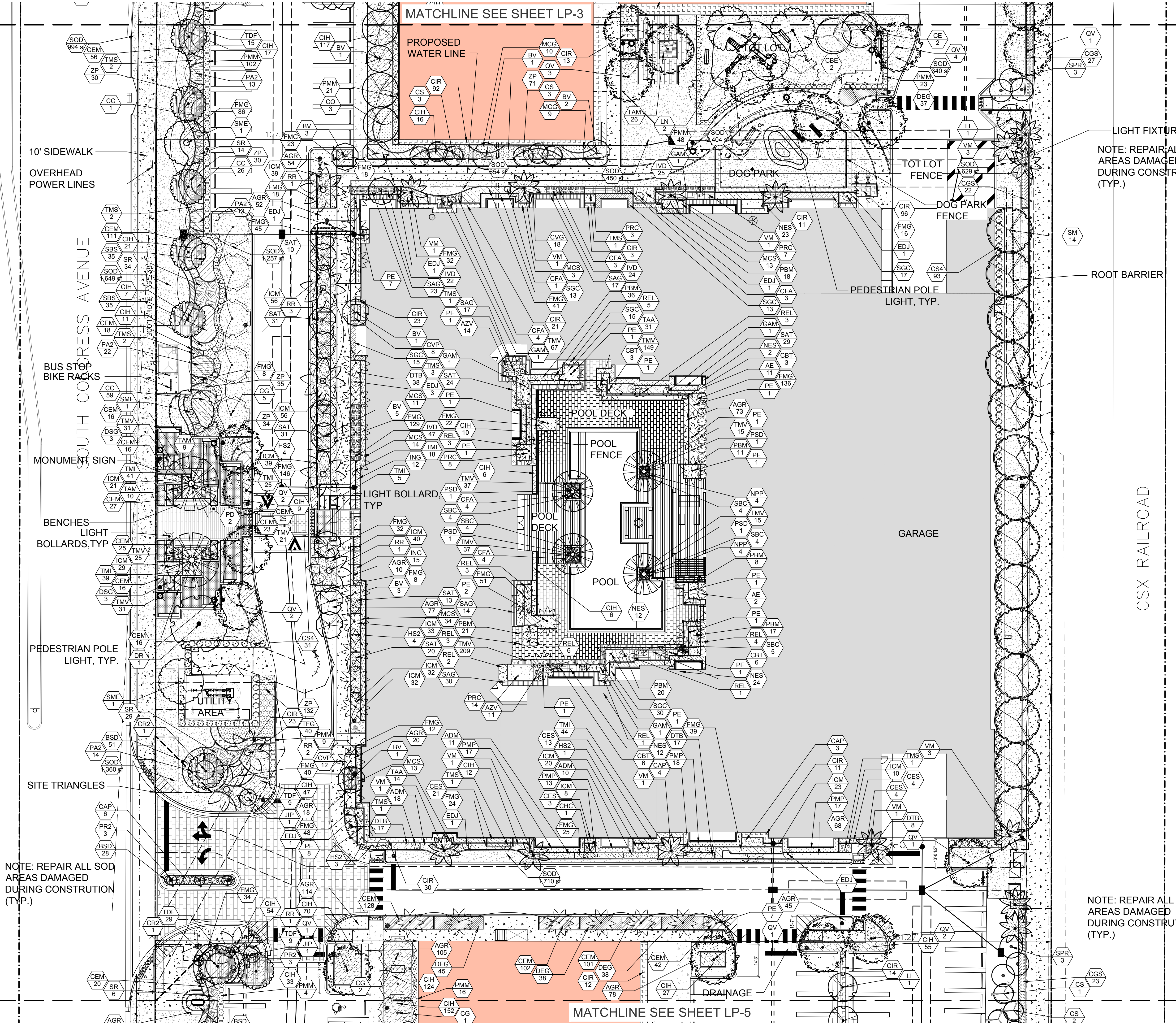
TAC COMMENTS 08-06-21  
TAC COMMENTS 10-13-21  
TAC COMMENTS 1-18-22  
TAC REVISIONS 2-23-22  
TAC REVISIONS 4-27-22  
TAC REVISIONS 5-07-22  
TAC REVISIONS 5-13-23

LANDSCAPE PLAN  
**DELRAY CENTRAL MULTI-FAMILY**  
G&C Arbors Investors, LLC  
Delray Beach, Florida

Sheet Description  
LANDSCAPE PLAN  
Release Date  
04-01-2021  
Project Number  
2111  
Drawing Number  
**LP-2**  
Sheet 2 of 8







10' SIDEWALK  
OVERHEAD POWER LINES

BUS STOP BIKE RACKS  
MONUMENT SIGN  
BENCHES  
LIGHT BOLLARDS, TYP.

PEDESTRIAN POLE LIGHT, TYP.

SITE TRIANGLES

NOTE: REPAIR ALL SOD AREAS DAMAGED DURING CONSTRUCTION (TYP.)

MATCHLINE SEE SHEET LP-3  
PROPOSED WATER LINE

DOG PARK

TOT LOT FENCE

DOG PARK FENCE

PEDESTRIAN POLE LIGHT, TYP.

ROOT BARRIER

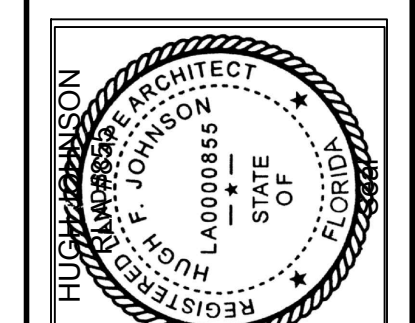
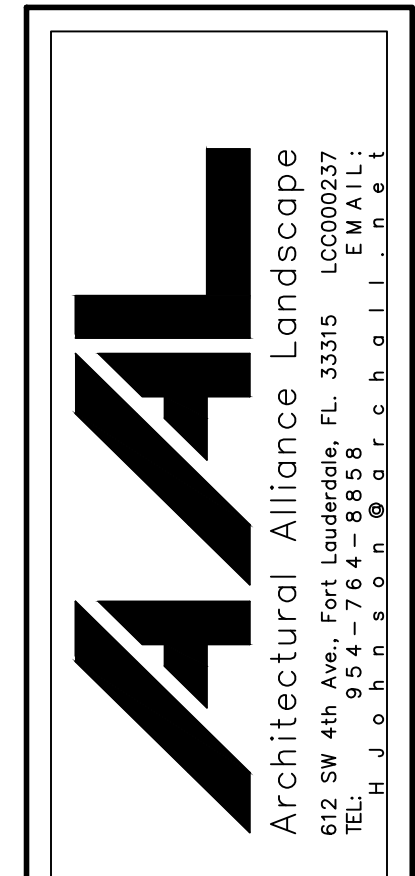
LIGHT FIXTURE  
NOTE: REPAIR ALL SOD AREAS DAMAGED DURING CONSTRUCTION (TYP.)

GARAGE

MATCHLINE SEE SHEET LP-5

NOTE: REPAIR ALL SOD AREAS DAMAGED DURING CONSTRUCTION (TYP.)

1"=20'



TAC COMMENTS 08-06-21	Revision Dates
TAC COMMENTS 10-13-21	
TAC COMMENTS 1-18-22	
TAC REVISIONS 2-23-22	
TAC REVISIONS 4-27-22	
TAC REVISIONS 6-07-22	
TAC REVISIONS 2-13-23	

LANDSCAPE PLAN  
**DELRAY CENTRAL MULTI-FAMILY**  
G&C Arbors Investors, LLC  
Delray Beach, Florida

Sheet Description	LANDSCAPE PLAN
Release Date	04-01-2021
Project Number	2111
Drawing Number	<b>LP-4</b>
	Sheet 4 of 8







