

# PLAN NOT TO SCALE SOUTH TOWER: PHASES 1,3.& 5

NO TRAFFIC CONTROL  
DEVICES TO BE PLACED  
BLOCKING DRIVEWAYS

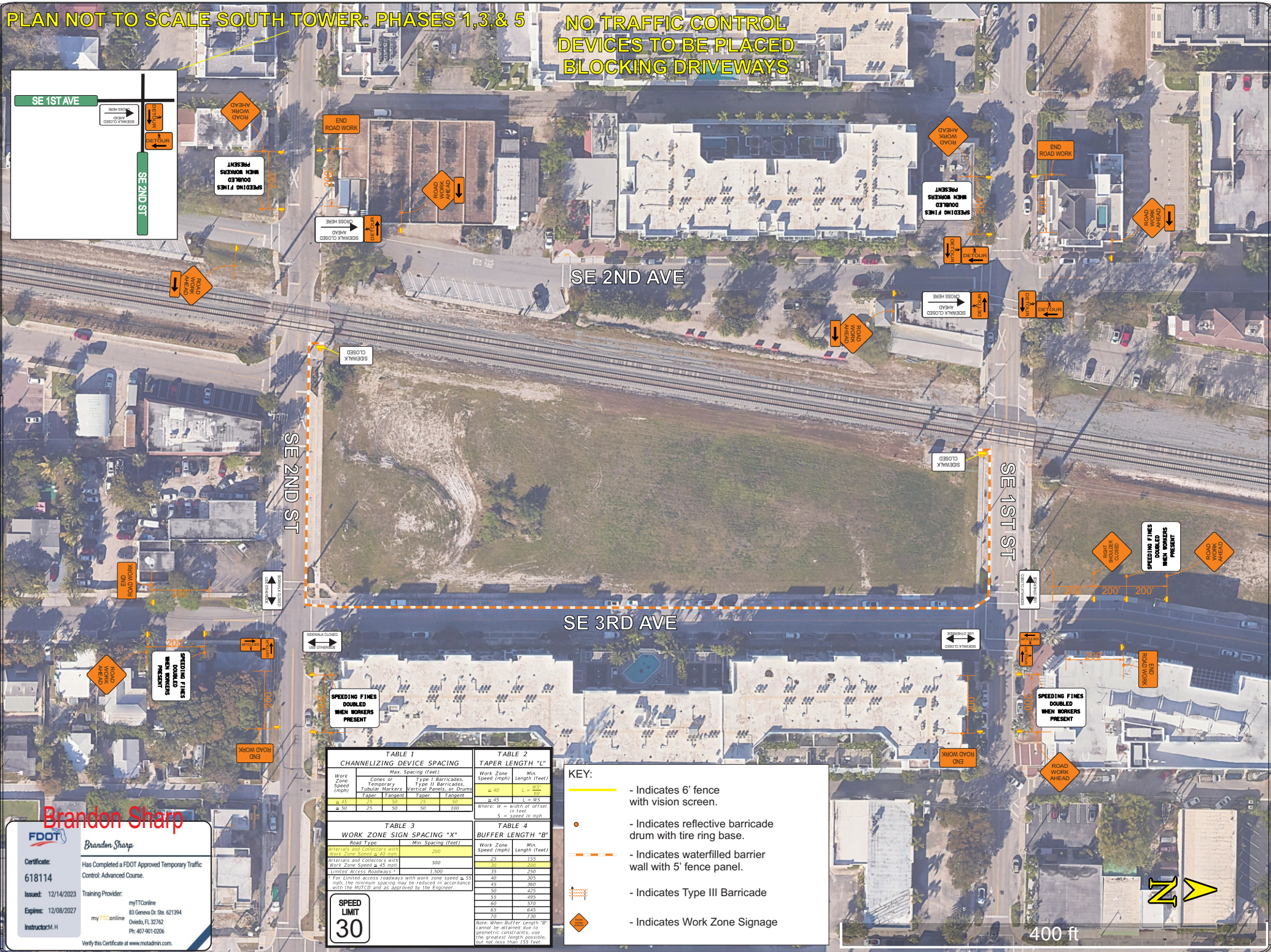
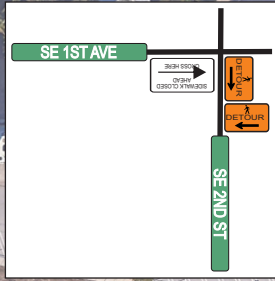


TABLE 1 CHANNELIZING DEVICE SPACING				
Work Zone Speed (mph)	Cones or Temporary Markers	Type I Barricades, Type II Barricades, Tubular Markers, Vertical Panels, or Drums	Max Spacing (feet)	
≤ 25	Taper	Taper	1,000	
26 - 35	Taper	Taper	500	
36 - 45	Taper	Taper	300	
46 - 55	Taper	Taper	200	
≥ 56	Taper	Taper	100	

TABLE 2 TAPER LENGTH "L"		
Work Zone Speed (mph)	Min. Length (feet)	Max. Length (feet)
≤ 40	L = 75	100
41 - 45	L = 100	150
46 - 55	L = 150	225
≥ 56	L = 225	300

TABLE 3 WORK ZONE SIGN SPACING "X"		
Road Type	Min. Spacing (feet)	Max. Spacing (feet)
Arterials and Collectors with Work Zone Speed ≤ 40 mph	200	300
Arterials and Collectors with Work Zone Speed 41 - 45 mph	300	450
Arterials and Collectors with Work Zone Speed 46 - 55 mph	450	600
Arterials and Collectors with Work Zone Speed ≥ 56 mph	600	900

TABLE 4 BUFFER LENGTH "B"		
Work Zone Speed (mph)	Min. Length (feet)	Max. Length (feet)
≤ 25	150	225
26 - 35	225	300
36 - 45	300	450
46 - 55	450	600
≥ 56	600	900

## KEY:

- Indicates 6' fence with vision screen.
- Indicates reflective barricade drum with tire ring base.
- Indicates waterfilled barrier wall with 5' fence panel.
- Indicates Type III Barricade
- Indicates Work Zone Signage

Brandon Sharp



Brandon Sharp

Certificate: 618114  
Expires: 12/14/2023  
Training Provider: myTTOnline  
Instructor: M.H.

Has Completed a FDOT Approved Temporary Traffic Control Advanced Course.  
83 Geneva Dr. Ste. 621394  
Oviedo, FL 32762  
Ph: 407-401-0206

Verify this Certificate at [www.mctadmn.com](http://www.mctadmn.com).



# PLAN NOT TO SCALE SOUTH TOWER: PHASES 2 & 4

NO TRAFFIC CONTROL DEVICES TO BE PLACED BLOCKING DRIVEWAYS

ALL SIDEWALK CLOSED SIGNS MOUNTED ON PEDESTRIAN LCD AS PER STANDARD 102-660

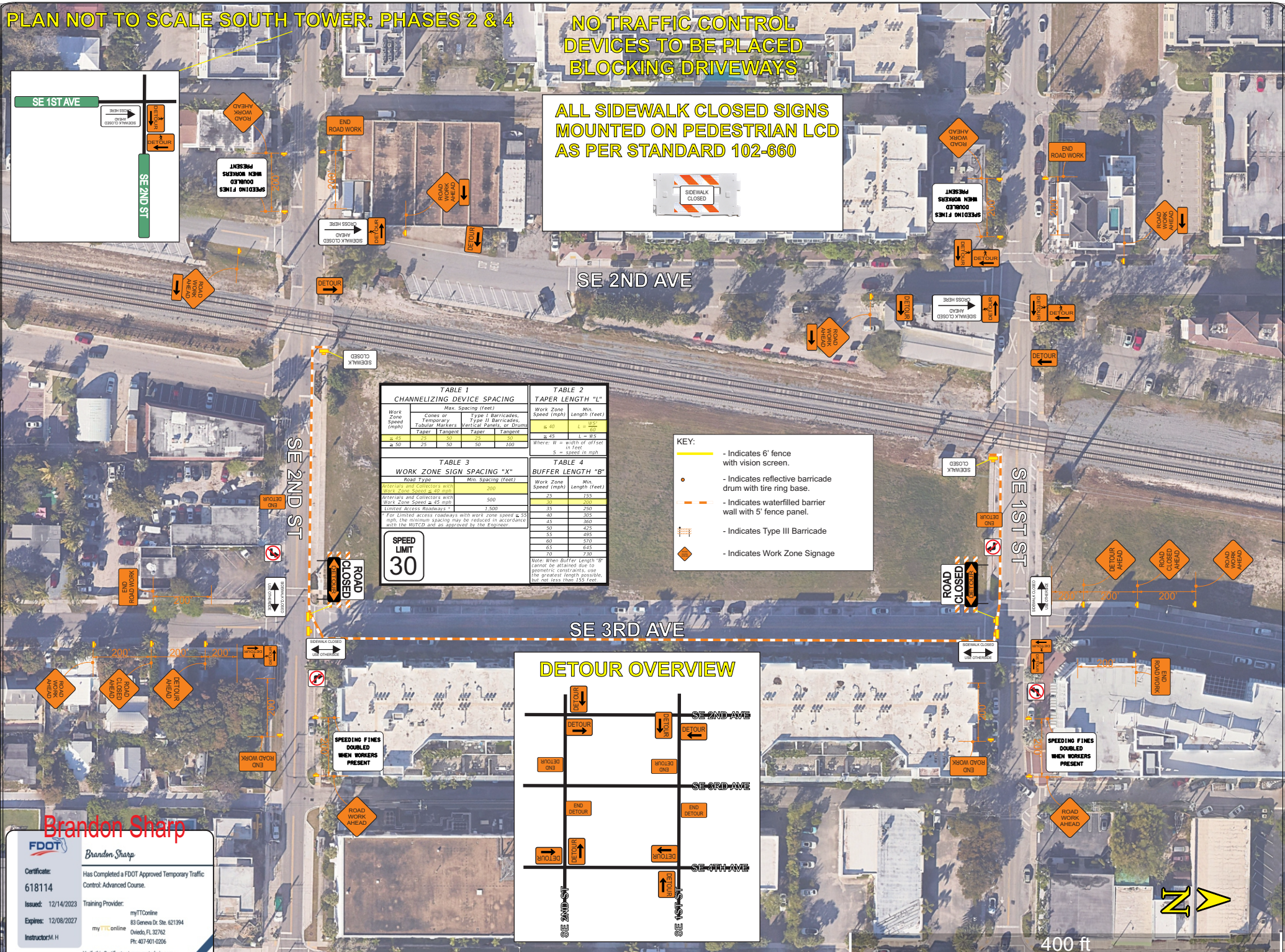
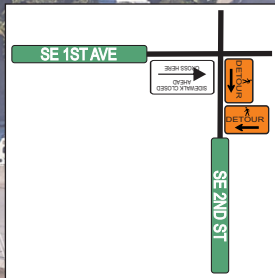


TABLE 1 CHANNELIZING DEVICE SPACING			
Work Zone Speed (mph)	Max Spacing (feet)	Cones or Temporary Taper	Type I Barricades, Tubular Markers, Vertical Panels, or Drum Taper
≤ 30	300	30	30
31 - 40	200	20	20
41 - 50	150	15	15
51 - 60	100	10	10
61 - 70	75	7.5	7.5
71 - 80	50	5	5
81 - 90	30	3	3
91 - 100	15	1.5	1.5

TABLE 2 TAPER LENGTH "L"			
Work Zone Speed (mph)	Min. Length (feet)	Max. Length (feet)	Notes
≤ 40	4	100	
41 - 50	4	85	
51 - 60	4	70	
61 - 70	4	55	
71 - 80	4	40	
81 - 90	4	25	
91 - 100	4	15	

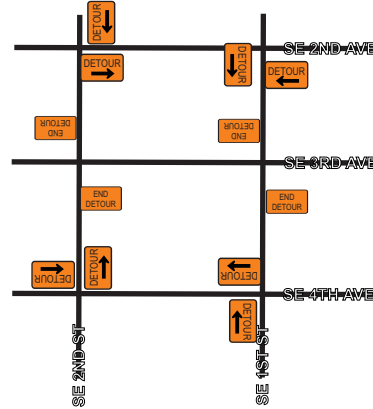
TABLE 3 WORK ZONE SIGN SPACING "X"			
Road Type	Min. Spacing (feet)	Max. Spacing (feet)	Notes
Interstates and Collectors with Work Zone Speed ≤ 40 mph	200	500	
Interstates and Collectors with Work Zone Speed ≤ 45 mph	300	1,500	
Limited Access Roadways	1,500	1,500	

TABLE 4 BUFFER LENGTH "B"			
Work Zone Speed (mph)	Min. Length (feet)	Max. Length (feet)	Notes
≤ 25	30	125	
26 - 30	30	100	
31 - 40	30	250	
41 - 50	30	300	
51 - 60	30	350	
61 - 70	30	425	
71 - 80	30	495	
81 - 90	30	570	
91 - 100	30	645	

- KEY:
- Indicates 6' fence with vision screen.
  - Indicates reflective barricade drum with tire ring base.
  - Indicates waterfilled barrier wall with 5' fence panel.
  - Indicates Type III Barricade
  - Indicates Work Zone Signage

## DETOUR OVERVIEW



Brandon Sharp

**FDOT**  
**Brandon Sharp**  
 Certificate: Has Completed a FDOT Approved Temporary Traffic Control: Advanced Course.  
 618114  
 Issued: 12/14/2023  
 Expires: 12/08/2027  
 Training Provider: myTTConline  
 83 Geneva Dr. Ste. 621394  
 Ocala, FL 32762  
 Ph: 407-401-0206  
 Verify this Certificate at [www.mctadmin.com](http://www.mctadmin.com).



SHEET	TABLE OF CONTENTS
1	General Notes, TTC Tables
2	Definitions Temporary Traffic Control Devices Overhead Work Railroads Sight Distance Above Ground Hazard
3	Clear Zone Widths For Work Zones Superelevation Length Of Lane Closures Overweight/Oversize Vehicles Lane Widths High-Visibility Safety Apparel Speed Reduction Signing
4	Flagger Control Survey Work Zones Signs
5	Work Zone Sign Supports
6	Commonly Used Warning and Regulatory Signs In Work Zones
7	Manholes/Crosswalks/Joints Truck Mounted Attenuators Signals Channelizing Devices Channelizing Devices Consistency Advanced Warning Arrow Boards
8	Drop-Offs In Work Zones
9	Business Entrance Temporary Asphalt Separator
10	Channelizing Devices Notes Temporary Barrier Notes
11	Pavement Markings

#### GENERAL NOTES:

- This Index contains information specific to the Federal and State guidelines and standards for the preparation of traffic control plans and for the execution of traffic control in work zones, for construction and maintenance operations and utility work on highways, roads and streets on the State Highway System. Certain requirements in this Index are based on the high volume nature of State Highways. For highways, roads and streets off the State Highway System, the local agency (City/County) having jurisdiction may adopt requirements based on the minimum requirements provided in the MUTCD.
- Use this Index in accordance with the Plans and Indexes 102-601 through 102-680. Indexes 102-601 through 102-680 are Department-specific typical applications of commonly encountered situations. Adjust device location or number thereof as recommended by the Worksite Traffic Supervisor and approved by the Engineer. Devices include, but are not limited to, flaggers, portable temporary signals, signs, pavement markings, and channelizing devices. Comply with MUTCD or applicable Department criteria for any changes and document the reason for the change.
- Except for emergencies, any road closure on State Highway System must comply with Section 335.15, F.S.


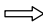
TABLE 1 CHANNELIZING DEVICE SPACING				
Work Zone Speed (mph)	Max. Spacing (feet)			
	Cones or Temporary Tubular Markers		Type I Barricades, Type II Barricades, Vertical Panels, or Drums	
	Taper	Tangent	Taper	Tangent
≤ 45	25	50	25	50
≥ 50	25	50	50	100

TABLE 2 TAPER LENGTH "L"	
Work Zone Speed (mph)	Min. Length (feet)
≤ 40	$L = \frac{WS^2}{60}$
≥ 45	$L = WS$
Where: W = width of offset in feet S = speed in mph	

TABLE 3 WORK ZONE SIGN SPACING "X"	
Road Type	Min. Spacing (feet)
Arterials and Collectors with Work Zone Speed ≤ 40 mph	200
Arterials and Collectors with Work Zone Speed ≥ 45 mph	500
Limited Access Roadways *	1,500
* For Limited access roadways with work zone speed ≤ 55 mph, the minimum spacing may be reduced in accordance with the MUTCD and as approved by the Engineer.	

TABLE 4 BUFFER LENGTH "B"	
Work Zone Speed (mph)	Min. Length (feet)
25	155
30	200
35	250
40	305
45	360
50	425
55	495
60	570
65	645
70	730
Note: When Buffer Length "B" cannot be attained due to geometric constraints, use the greatest length possible, but not less than 155 feet.	

#### SYMBOLS:

-  Work Area
-  Channelizing Device
-  Work Zone Sign
-  Type III Barricade
-  Lane Identification and Direction of Traffic

Brandon Sharp



Certificate:  
618114

Issued: 12/14/2023  
Expires: 12/08/2027  
Instructor: M. H.

Brandon Sharp

Has Completed a FDOT Approved Temporary Traffic Control: Advanced Course.

Training Provider:  
myTTOnline  
83 Geneva Dr. Ste. 621394  
Oviedo, FL 32762  
Ph: 407-901-0206

Verify this Certificate at [www.motadmin.com](http://www.motadmin.com).



FY 2024-25  
STANDARD PLANS

GENERAL INFORMATION FOR TRAFFIC  
CONTROL THROUGH WORK ZONES

INDEX  
102-600

SHEET  
1 of 11

LAST  
REVISION  
11/01/23

10/3/2023 10:53:44 AM

## Notes for Figure 6P-20—Typical Application 20 Detour for a Closed Street

### Guidance:

*This plan should be used for streets without posted route numbers.*

*On multi-lane streets, Detour signs with an Advance Turn Arrow should be used in advance of a turn.*

### Option:

Flashing warning lights and/or flags may be used to call attention to the advance warning signs.

Flashing warning lights may be used on Type 3 Barricades.

Detour signs may be located on the far side of intersections. A Detour sign with an advance arrow may be used in advance of a turn.

A Street Name sign may be mounted with the Detour sign. The Street Name sign may be either white on green or black on orange.

### Standard:

**When used, the Street Name sign shall be placed above the Detour sign.**

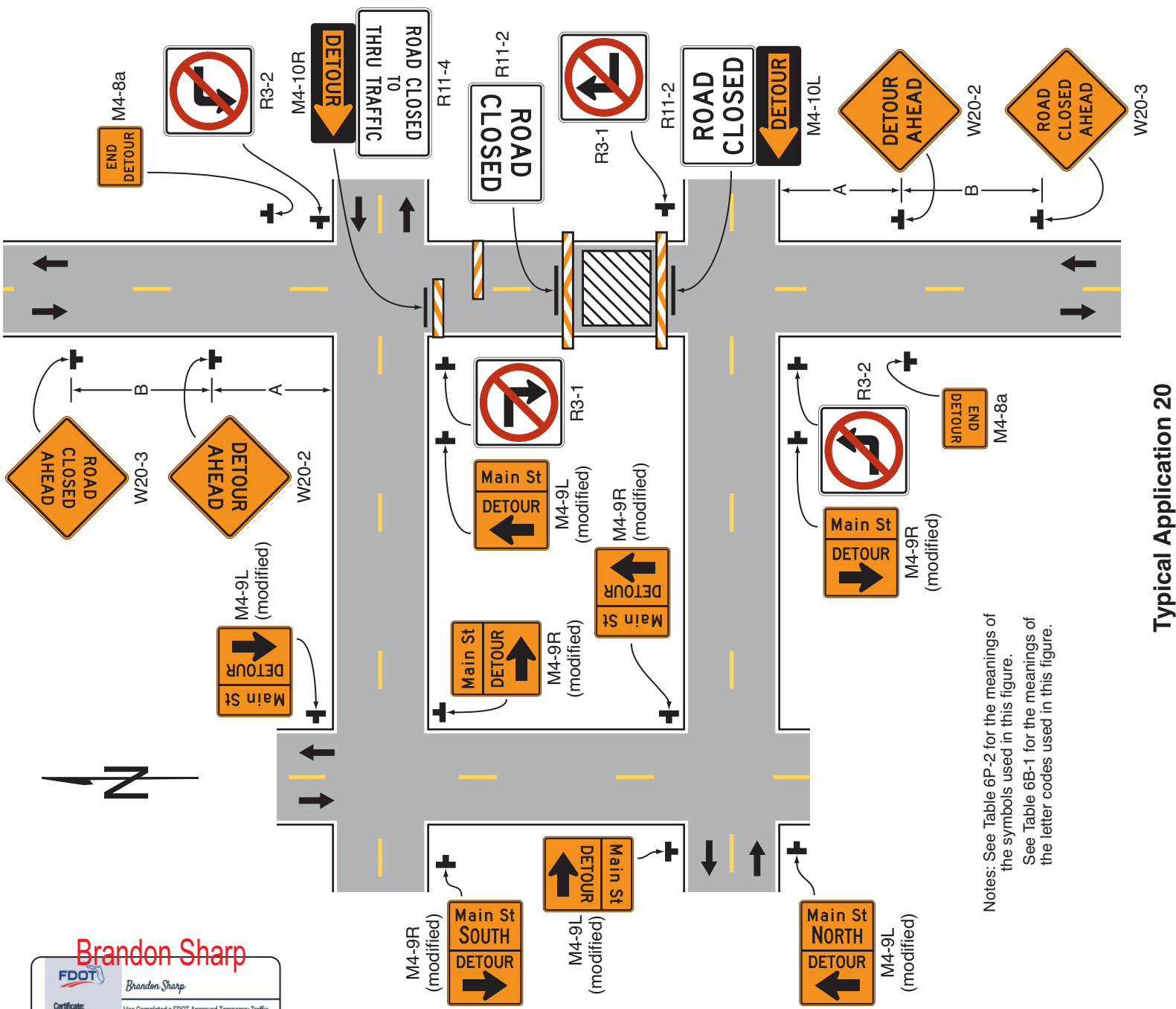
### Support:

Figure 6P-9 contains the information for detouring a numbered highway.





Figure 6P-20. Detour for a Closed Street (TA-20)



Typical Application 20







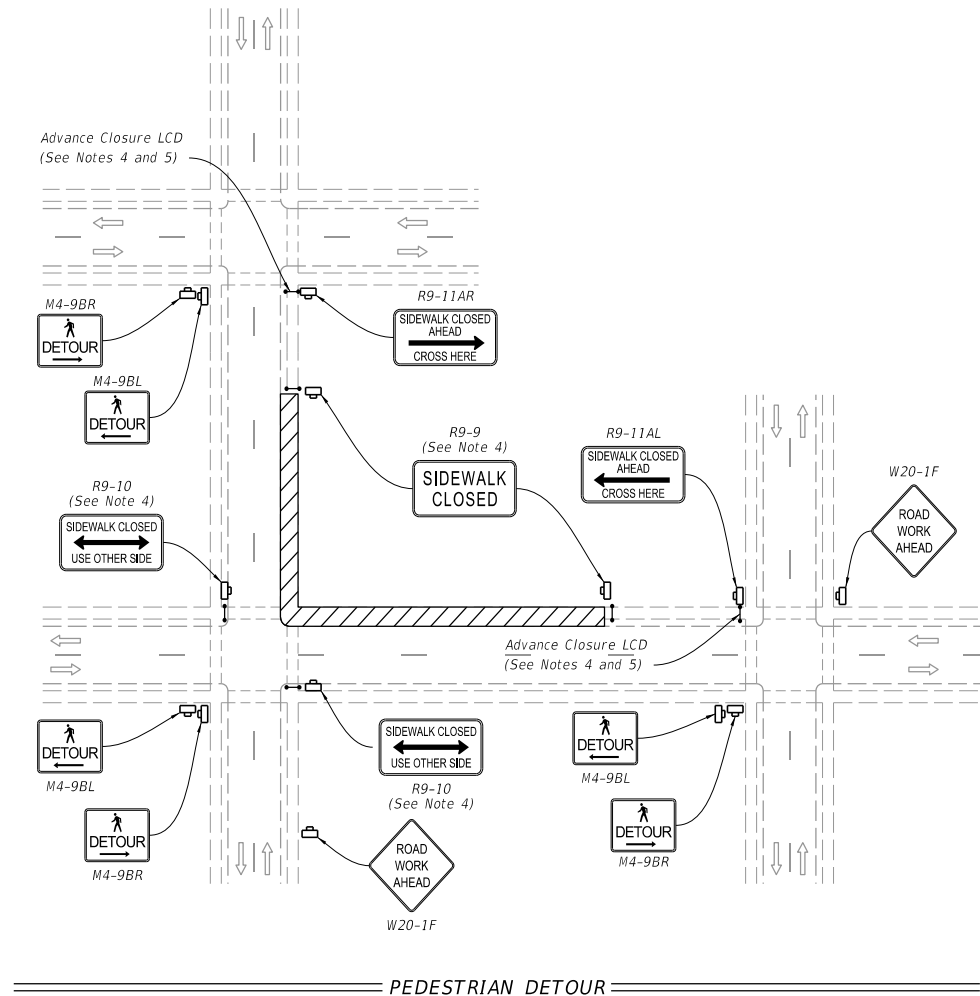


# NOTES:

1. Cover or deactivate pedestrian traffic signal display(s) controlling closed crosswalks.
2. Place pedestrian LCDs across the full width of the closed sidewalk.
3. For post mounted signs located near or adjacent to a sidewalk, maintain a minimum 7' clearance from the bottom of the sign panel to the surface of the sidewalk.
4. "Sidewalk Closed" signs (R9-XX) may be mounted on pedestrian LCDs in accordance with the manufacturer's instructions.
5. Omit the Advance Closure LCD if it blocks access to other pedestrian facilities (e.g., transit stops, residences, or business entrances).

## SYMBOLS:

-  Work Area
-  Work Zone Sign
-  Pedestrian Longitudinal Channelizing Device (LCD)
-  Lane Identification and Direction of Traffic



Brandon Sharp



**Brandon Sharp**

Certificate: 618114

Issued: 12/14/2023

Expires: 12/08/2027

Instructor: M.H.

Has Completed a FDOT Approved Temporary Traffic Control Advanced Course.

Training Provider: myTTOnline

83 Geneva Dr. Ste. 621394

Oviedo, FL 32762

Ph: 407-901-0206

Verify this Certificate at [www.motadmn.com](http://www.motadmn.com)



FY 2024-25  
STANDARD PLANS

SIDEWALK CLOSURE

INDEX  
102-660

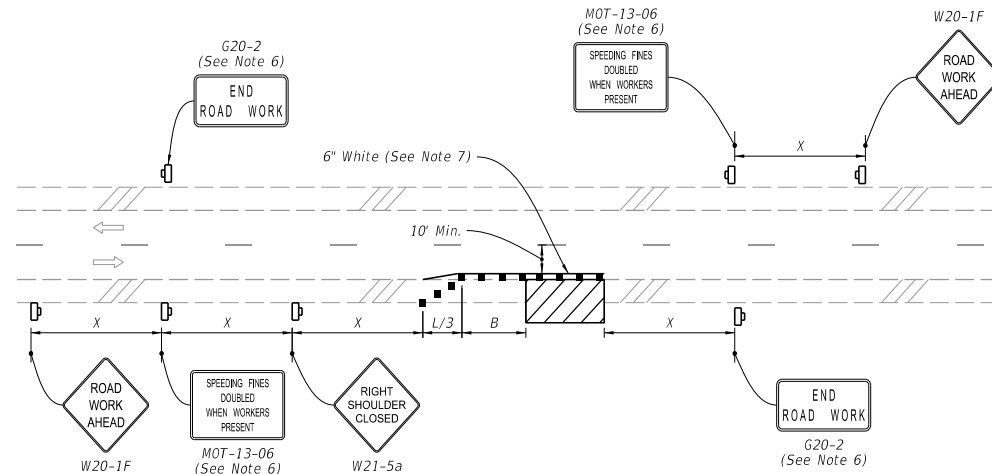
SHEET  
1 of 2

LAST REVISION	DESCRIPTION:
11/01/20	

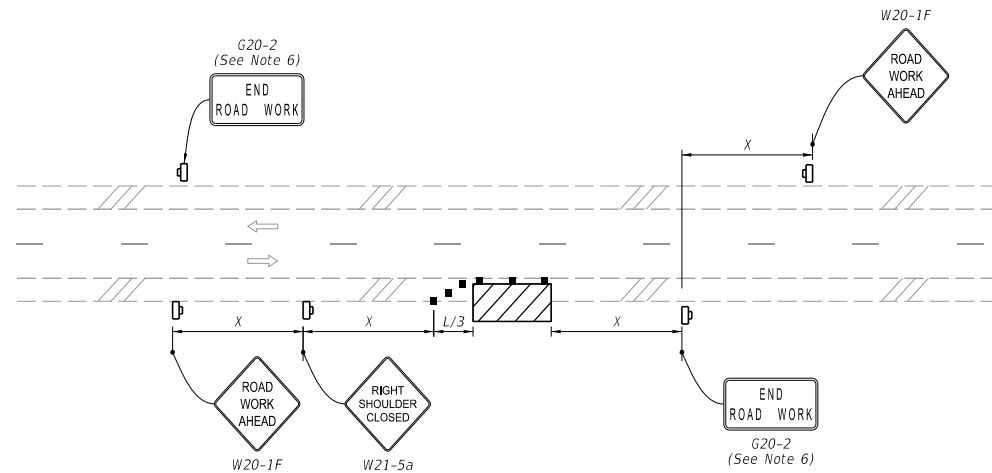


# NOTE:

1. This Index applies to Two-Lane, Two-Way and Multilane Roadways, including Medians of divided roadways, with work on the shoulder.
2.  $L$  = Taper Length  
 $X$  = Work Zone Sign Spacing  
 $B$  = Buffer Length  
See Index 102-600 for "L", "X", "B", and channelizing device spacing values.
3. Where work activities are between 2' and 15' from the edge of traveled way, the Engineer may omit signs and channelizing devices for work operations 60 minutes or less.
4. When four or more work vehicles enter the through traffic lanes in a one hour period (excluding establishing and terminating the work area), use a flagger or lane closure to accommodate work vehicle ingress and egress.
5. For work less than 2' from the traveled way and work zone speed is greater than 45 MPH, use a lane closure.
6. The "Speeding Fines Doubled When Workers Present" signs (MOT-13-06) and "End Road Work" Signs (G20-2) along with the associated work zone sign spacing distances may be omitted when the work operation is in place for 24 hours or less.
7. Temporary pavement markings may be omitted when the work operation is in place for 3 days or less.
8. Omit "Shoulder Closed" signs (W21-5a) along with associated work zone sign spacing distances for work on the median.
9. When there is no paved shoulder, the "Worker" sign (W21-1) may be used instead of the "Shoulder Closed" sign (W21-5a).



**TWO-LANE ROADWAY**  
**SHOULDER WORK LESS THAN 2' FROM THE TRAVELED WAY**  
**WITH WORK ZONE SPEED OF 45 MPH OR LESS**



**TWO-LANE ROADWAY**  
**SHOULDER WORK BETWEEN 2' AND 15' FROM THE TRAVELED WAY**

## SYMBOLS:

- Work Area
- Channelizing Device (See Index 102-600)
- Work Zone Sign
- Lane Identification and Direction of Traffic

**Brandon Sharp**

**FDOT**

Certificate: 618114

Issued: 12/14/2023

Expires: 12/08/2027

Instructor: M.H.

Training Provider: myTTConline

83 Geneva Dr. Ste. 621394

Oviedo, FL 32762

PH: 407-901-0206

Verify this Certificate at [www.motadmin.com](http://www.motadmin.com)



FY 2024-25  
STANDARD PLANS

TWO-LANE AND MULTILANE, WORK ON SHOULDER

INDEX  
102-602

SHEET  
1 of 2