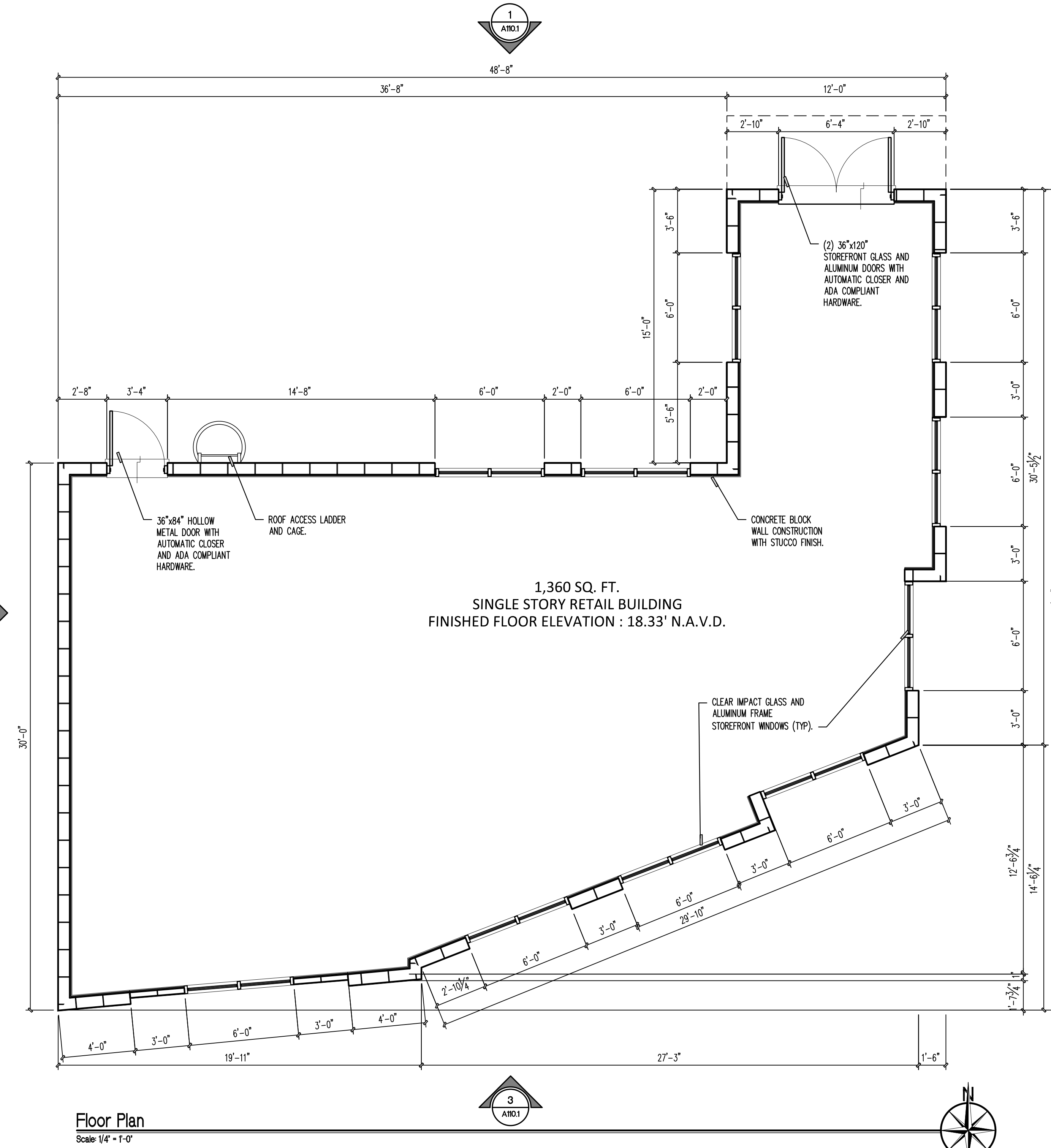
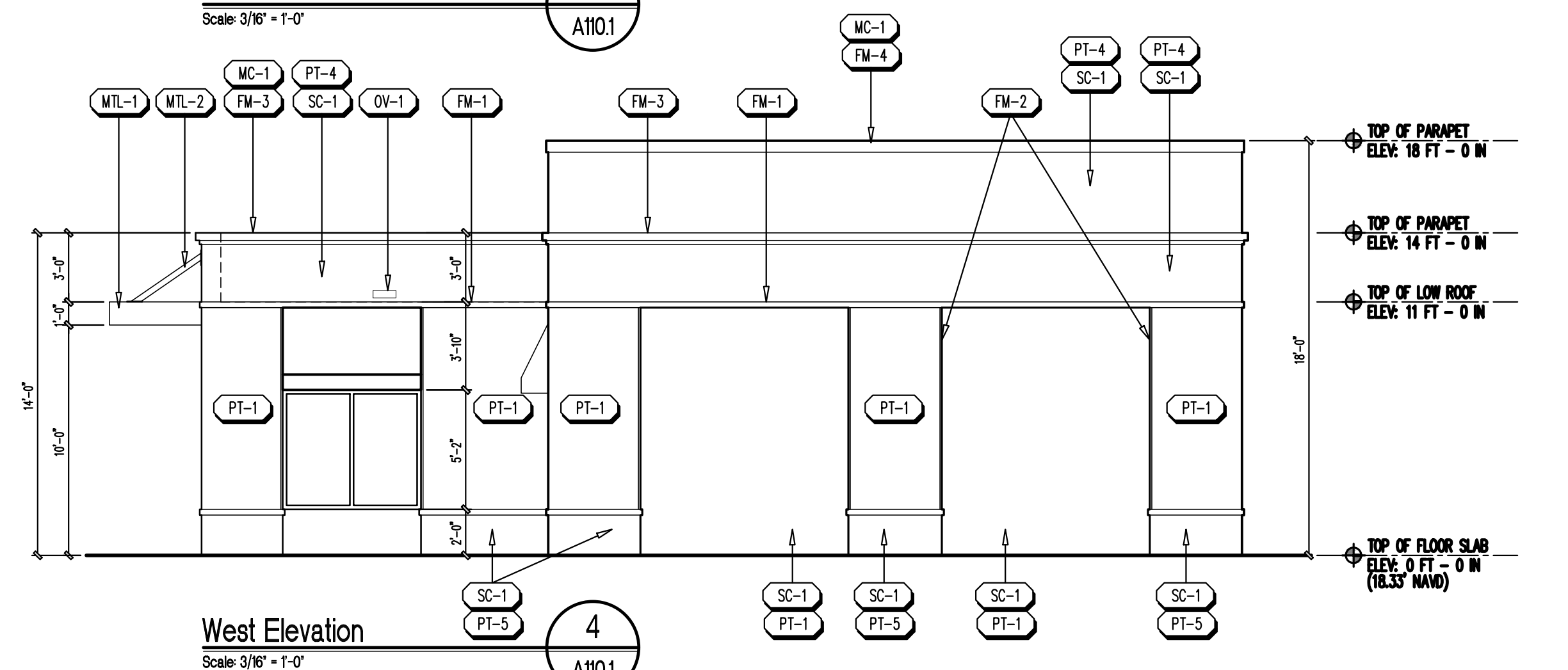
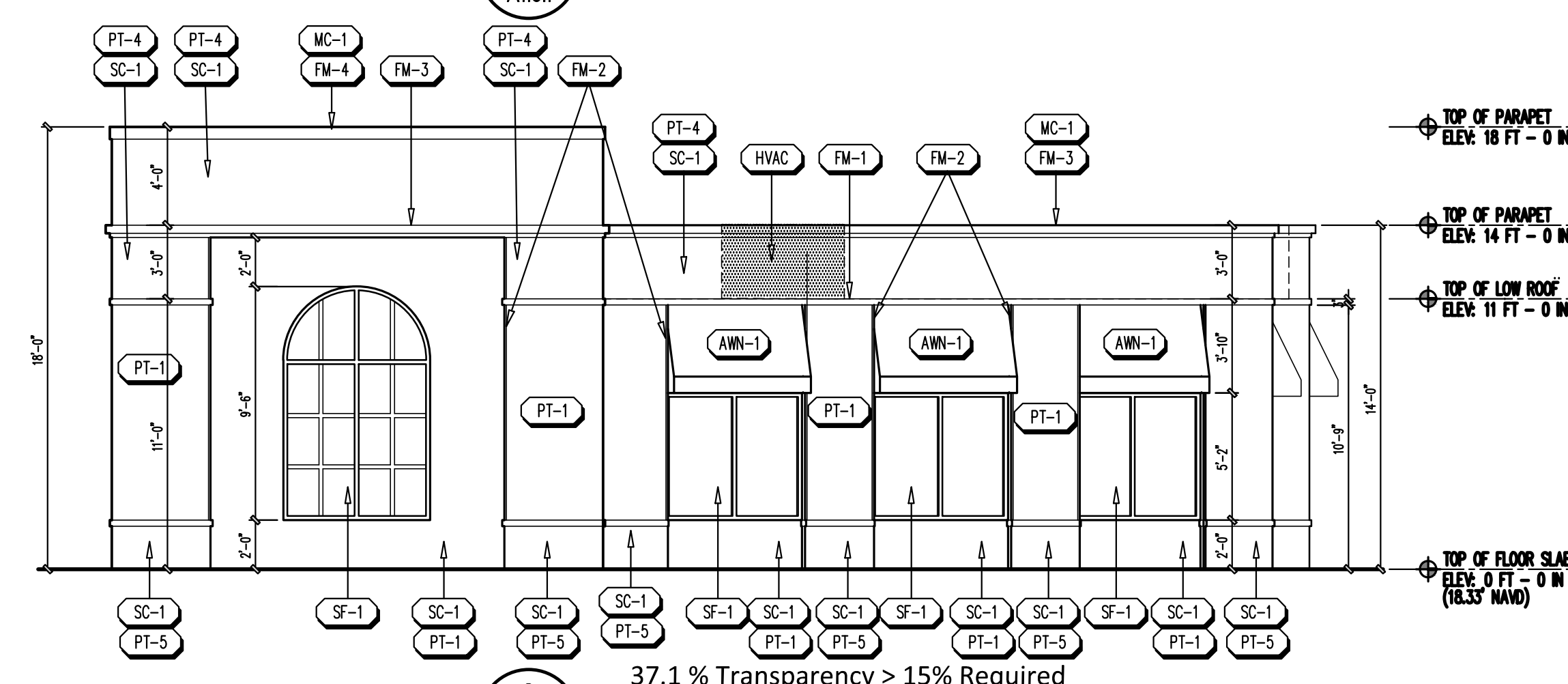
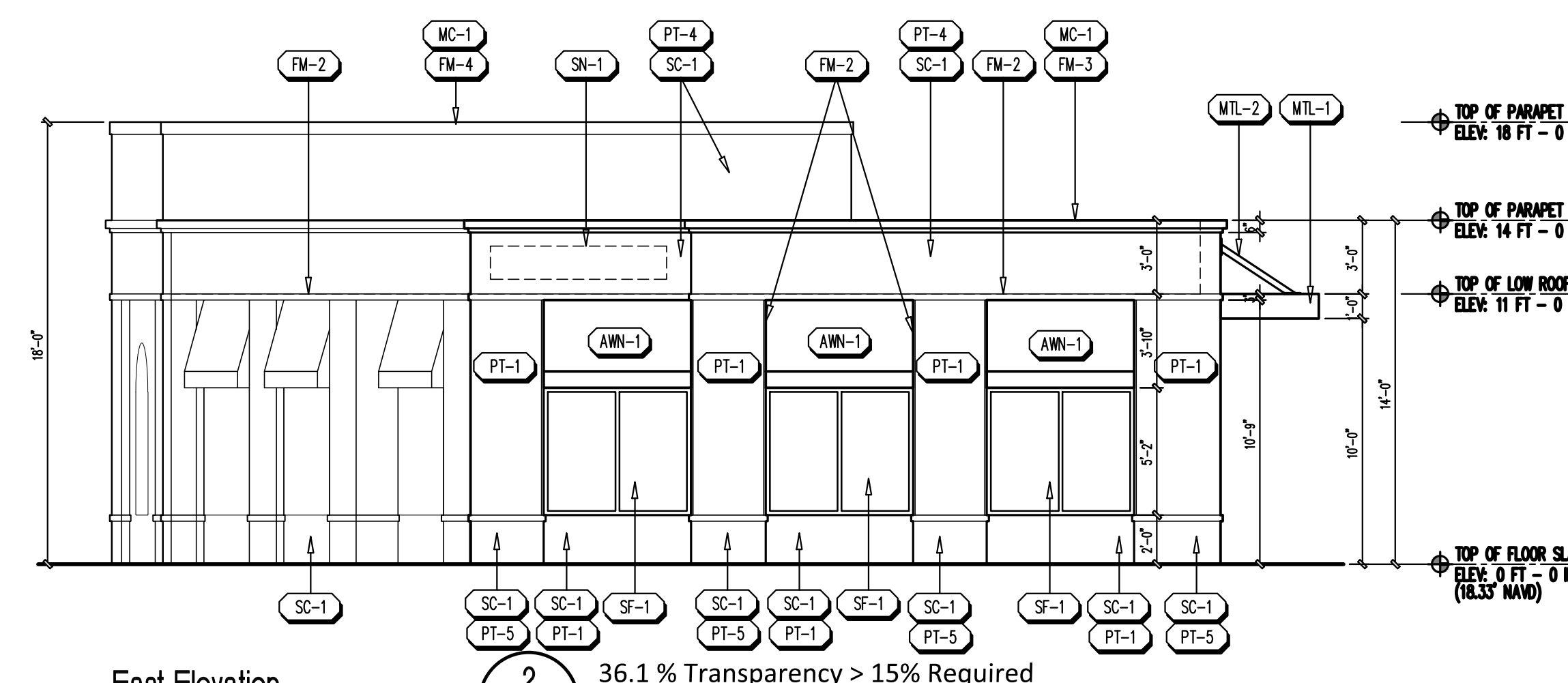
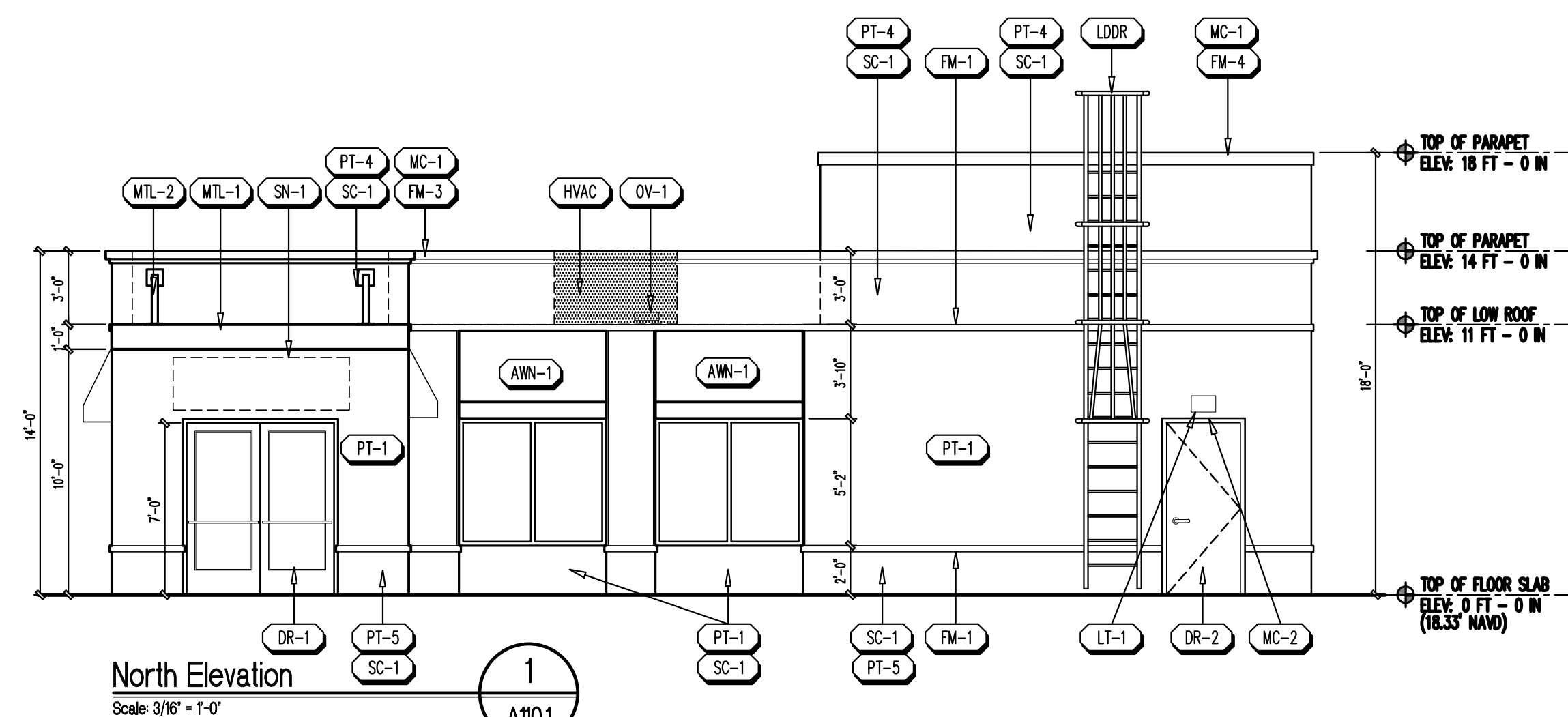


## A Building for: Drutau Retail

Northwest Corner of  
Atlantic Ave & NW 18 Ave  
Delray Beach, Florida

All plans, drawings, and specifications are prepared by the firm of RJS Architects, Inc. This document is prepared for the use of the client and is not to be used for any other purpose. The client is responsible for obtaining all necessary permits and approvals from the appropriate authorities. RJS Architects, Inc. is not responsible for any errors or omissions in this document. The client is responsible for providing all necessary information and data for the preparation of this document. The client is responsible for obtaining all necessary permits and approvals from the appropriate authorities. RJS Architects, Inc. is not responsible for any errors or omissions in this document. The client is responsible for providing all necessary information and data for the preparation of this document.



Exterior Elevation Schedule															
Symbol	Material	Manufacturer	Product	Color	Finish	Detail	Remarks	Symbol	Material	Manufacturer	Product	Color	Finish	Detail	Remarks
(SC-1)	STUCCO	LOCAL SUPPLIER	3/8" THICKNESS (2 COAT APPLICATION)	SEE ELEVATIONS	MEDIUM TEXTURED			(DR-1)	DOOR	KAMMER OR APPROVED EQUAL	350 IR	MEDIUM BRONZE			FLORIDA PRODUCT APPROVED - FL#87861
(FM-1)	FOAM BAND	LOCAL SUPPLIER		PAINT: PT-2	MEDIUM TEXTURED	1/2" X 3"		(DR-2)	DOOR	ALLEGION OR APPROVED EQUAL	STEELEKRAFT H-SERIES	PAINT: PT-1			FLORIDA PRODUCT APPROVED - FL#85911
(FM-2)	FOAM BAND	LOCAL SUPPLIER		PAINT: PT-2	MEDIUM TEXTURED	1" X 1"		(OV-1)	OVERFLOW SCOPPER						BY GENERAL CONTRACTOR
(FM-3)	FOAM CORNICE	LOCAL SUPPLIER		PAINT: PT-2	MEDIUM TEXTURED	3" X 6"		(MC-1)	METAL COPING OR DRIP EDGE						BY GENERAL CONTRACTOR
(FM-4)	FOAM CORNICE	LOCAL SUPPLIER		PAINT: PT-2	MEDIUM TEXTURED	1" X 6"		(MC-2)	METAL DOOR RAIN GUARD						BY GENERAL CONTRACTOR
(PT-1)	PANT	SHERWIN WILLIAMS	JERSEY CREAM	SW 6379			MAIN BUILDING	(LT-1)	WALL PACK LIGHT FIXTURE	LS INDUSTRIES	(PTNS-FM-32-CR-LF-120-RJ-PC102)				BY GENERAL CONTRACTOR
(PT-2)	PANT	SHERWIN WILLIAMS	ALABASTER	SW 7008			FOAM BANDING	(MTL-1)	CUSTOM ALUMINUM OVERHANG	BY GENERAL CONTRACTOR		PAINT: PT-3			BY GENERAL CONTRACTOR WITH RECESSED LIGHTING
(PT-3)	PANT	SHERWIN WILLIAMS	PAVILION BEIGE	SW 7512			AWNING	(MTL-2)	CUSTOM ALUMINUM ANGLED SUPPORTS	BY GENERAL CONTRACTOR		PAINT: PT-3			BY GENERAL CONTRACTOR
(PT-4)	PANT	SHERWIN WILLIAMS	CRISP LINEN	SW 6378			BUILDING CAP	(HVC)	MECHANICAL HVAC UNIT	BY GENERAL CONTRACTOR					CONCEALED BY PARAPET
(PT-5)	PANT	SHERWIN WILLIAMS	NEOBORLY PEACH	SW 6632			BUILDING BASE	(LDDR)	ROOF ACCESS LADDER	BY GENERAL CONTRACTOR					SEE DETAIL 6/A110.1
(SF-1)	STOREFRONT	XXX OR APPROVED EQUAL	1/2" INSULATED (LOW "E" IF APPROVED BY CLIENT)	BRONZE FRAME	GLASS: CLEAR (NO TINTING)		FLORIDA PRODUCT APPROVED - FL#4218-R8	(SN-1)	PROPOSED SIGN LOCATION						TO BE PERMITTED AND APPROVED BY OTHERS
(AWN-1)	AWNING	LOCAL SUPPLIER		BLUE	ALUMINUM FRAME: BRONZE		SUPPLIER TO PROVIDE ENGINEERING FOR PERMITTING AND APPROVAL.								

- Notes:**
1. PROVIDE PRIMER/SEALER PRIOR TO FINISH PAINT.
  2. ALL MECHANICAL UNITS AND CONDENSING EQUIPMENT IS TO BE INSTALLED BEHIND PARAPET OF ROOF AND HIDDEN FROM VIEW. GENERAL CONTRACTOR IS TO PROVIDE SCREENING AS REQUIRED BY THE ZONING DEPARTMENT.
  3. ALL EXPOSED PIPING AND CONDUIT TO MATCH ADJACENT SURFACE.

ISSUANCE OF DOCUMENTATION:	
Description:	Date:
PRELIMINARY DESIGN	6.24.2019
CLIENT APPROVAL	8.5.2020
LANDLORD APPROVAL	8.5.2020
BIDDING	
PERMIT	

REVISIONS:		
Number:	Date:	Description:
1	12.7.2020	ZONING REVIEW
2	11.11.2021	ZONING REVIEW

## PRELIMINARY FLOOR PLAN AND EXTERIOR ELEVATIONS

Project Number: **19016**  
Principal: RJS  
Project Manager: RJS  
Drawn by: RJS

Architecture  
A 130.1  
Date: 2/13/2024 12:50:20 PM  
Total Sheets: 4