

Prepared for:

HYDE PARK PRIME STEAKHOUSE

601 E. Atlantic Ave #109
Delray Beach, FL 33483



JAMES WENDEHOST

 j.wendehost@firstandmain signs.com

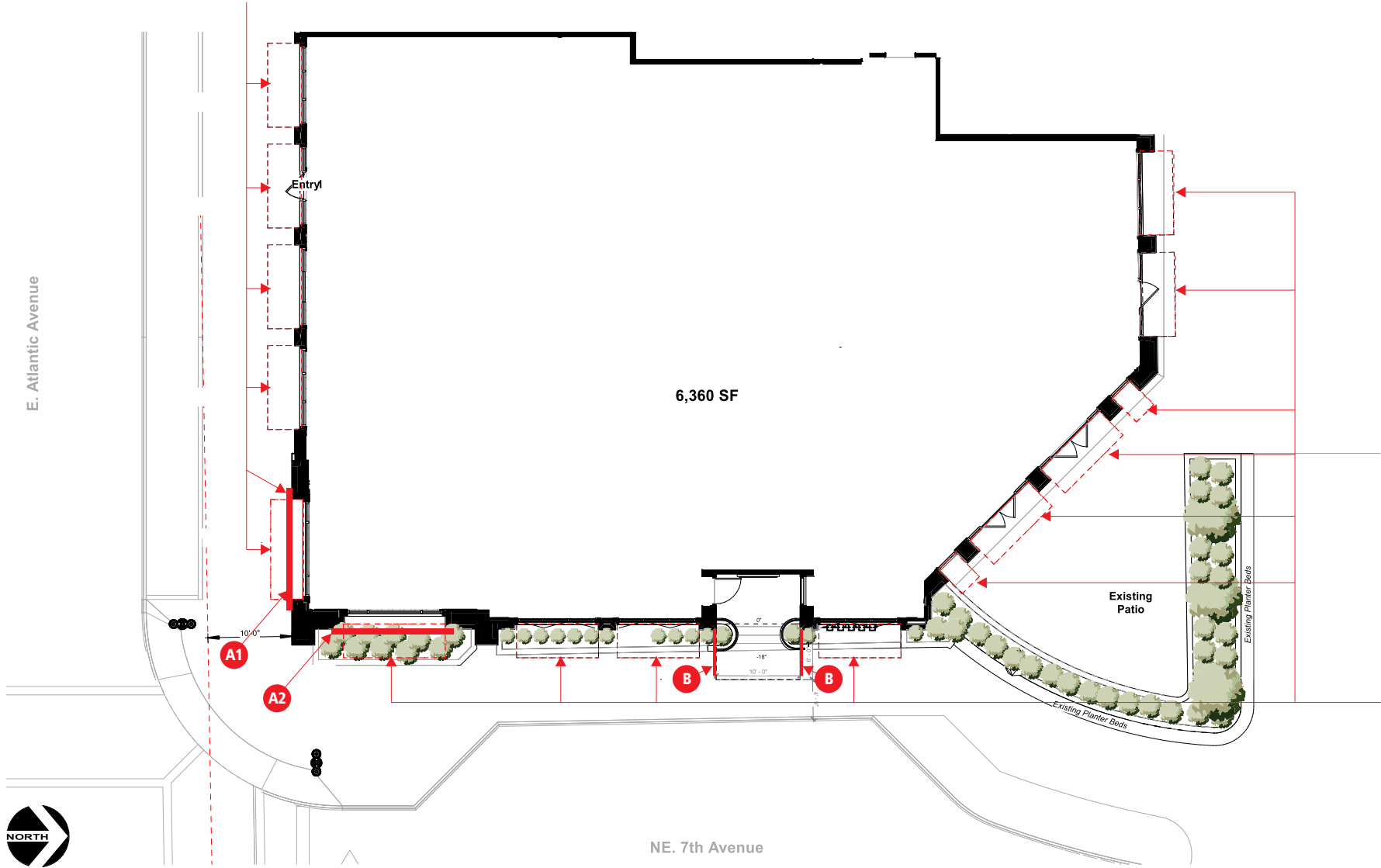
 234.458.0990

 Ohio California Colorado Indiana Oklahoma

EASE | INTEGRITY | PERFORMANCE

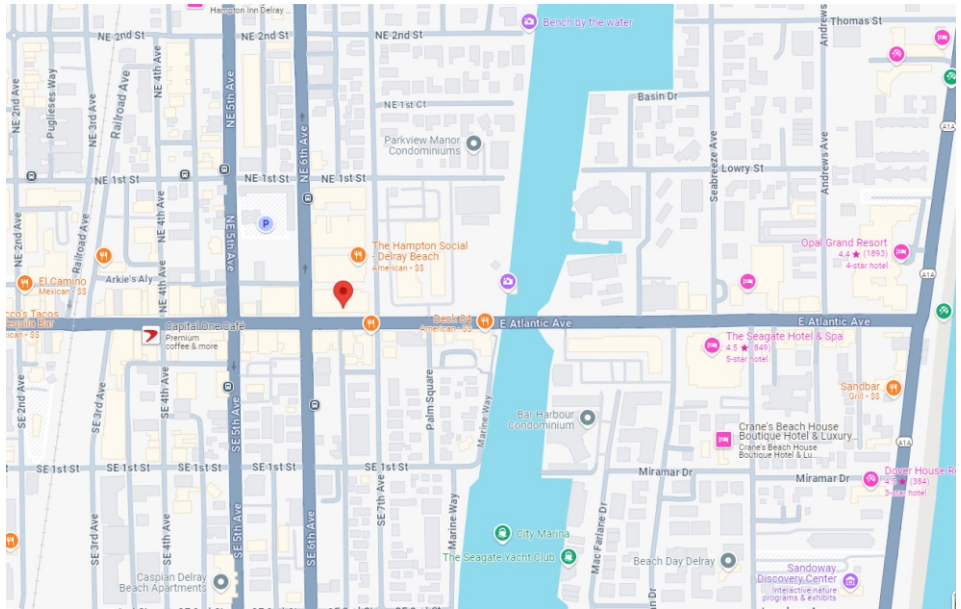
#24-3218-R09 (PERMIT)

AWNINGS NOT PART OF MSP AMENDMENT



AWNINGS NOT PART OF MSP AMENDMENT

1 SITE PLAN
SCALE: NTS



2 VICINTIY MAP
SCALE: NTS

FIRST & MAIN

SIGNAGE FOR MODERN BRANDS

2340 Shepler Church Ave SW
Canton, OH 44706
234.458.0990

OHIO • CALIFORNIA
COLORADO • INDIANA
OKLAHOMA

Location:

HYDE PARK
PRIME STEAKHOUSE
601 E. Atlantic Ave #109
Delray Beach, FL 33483

Revision:

- 1)10.11.24 BE: omit C, rev D
- 2)10.14.24 MG: Show the correct FCO's on awnings per arch dwg's
- 3)10.21.24 BE: revise D locations, add F
- 4)10.24.24 BE: updated awning specs; added detail 1.12
- 5)12.2.24 BE: updated per survey
- 6)12.9.24 BE: updated w/ provided vector art / font
- 7)1.6.25 PM: approving Sign A1/2 for production
- 8)1.16.25 MG: Modified tagline to meet 1 1/2" stroke width min. for production
- 9)1.17.25 BE: rev. to show low electrical penetrations req'd

- ☐ Approved
- ☐ Approved as Noted
- ☐ Revise & Resubmit

Drawing No: 24-3218-R09 (PERMIT)

Date: 09.12.2024 BE

Page No: 2.00

This is an original unpublished drawing created by First & Main Signs. It is submitted for your personal use in conjunction with a project being planned for you by First & Main Signs. It is not to be shown to anyone outside your organization, nor is it to be used, reproduced, copied or exhibited in any fashion without written permission from First & Main Signs.

2340 Shepler Church Ave SW
Canton, OH 44706
234.458.0990

OHIO • CALIFORNIA
COLORADO • INDIANA
OKLAHOMA

Location:
**HYDE PARK
PRIME STEAKHOUSE**
601 E. Atlantic Ave #109
Delray Beach, FL 33483

- Revision:
- 1)10.11.24 BE: omit C, rev D
 - 2)10.14.24 MG: Show the correct FCO's on awnings per arch dwg's
 - 3)10.21.24 BE: revise D locations, add F
 - 4)10.24.24 BE: updated awning specs; added detail 1.12
 - 5)12.2.24 BE: updated per survey
 - 6)12.9.24 BE: updated w/ provided vector art / font
 - 7)1.6.25 PM: approving Sign A1/2 for production
 - 8)1.16.25 MG: Modified tagline to meet 1½" stroke width min. for production
 - 9)1.17.25 BE: rev. to show low electrical penetrations req'd

- ☐ Approved
- ☐ Approved as Noted
- ☐ Revise & Resubmit

Drawing No: 24-3218-R09 (PERMIT)

Date: 09.12.2024 BE

Page No: 3.00

This is an original unpublished drawing created by First & Main Signs. It is submitted for your personal use in conjunction with a project being planned for you by First & Main Signs. It is not to be shown to anyone outside your organization, nor is it to be used, reproduced, copied or exhibited in any fashion without written permission from First & Main Signs.



AWNINGS AND WINDOW VINYL NOT PART OF MSP AMENDMENT

1 SOUTH ELEVATION
SCALE: 1/8" = 1' - 0"



AWNINGS AND WINDOW VINYL NOT PART OF MSP AMENDMENT

1 EAST ELEVATION
SCALE: 1/8" = 1' - 0"

FIRST & MAIN

SIGNAGE FOR MODERN BRANDS

2340 Shepler Church Ave SW
Canton, OH 44706
234.458.0990

OHIO • CALIFORNIA
COLORADO • INDIANA
OKLAHOMA

Location:

**HYDE PARK
PRIME STEAKHOUSE**
601 E. Atlantic Ave #109
Delray Beach, FL 33483

Revision:

- 1)10.11.24 BE: omit C, rev D
- 2)10.14.24 MG: Show the correct FCO's on awnings per arch dwgs
- 3)10.21.24 BE: revise D locations, add F
- 4)10.24.24 BE: updated awning specs; added detail 1.12
- 5)12.2.24 BE: updated per survey
- 6)12.9.24 BE: updated w/ provided vector art / font
- 7)1.6.25 PM: approving Sign A1/2 for production
- 8)1.16.25 MG: Modified tagline to meet 1 1/2" stroke width min. for production
- 9)1.17.25 BE: rev. to show low electrical penetrations req'd

- ☐ Approved
- ☐ Approved as Noted
- ☐ Revise & Resubmit

Drawing No: **24-3218-R09 (PERMIT)**

Date: **09.12.2024** BE

Page No: **4.00**

This is an original unpublished drawing created by First & Main Signs. It is submitted for your personal use in conjunction with a project being planned for you by First & Main Signs. It is not to be shown to anyone outside your organization, nor is it to be used, reproduced, copied or exhibited in any fashion without written permission from First & Main Signs.

Location:
**HYDE PARK
PRIME STEAKHOUSE**
601 E. Atlantic Ave #109
Delray Beach, FL 33483

- Revision:
- 1)10.11.24 BE: omit C, rev D
 - 2)10.14.24 MG: Show the correct FCO's on awnings per arch dwg's
 - 3)10.21.24 BE: revise D locations, add F
 - 4)10.24.24 BE: updated awning specs; added detail 1.12
 - 5)12.2.24 BE: updated per survey
 - 6)12.9.24 BE: updated w/ provided vector art / font
 - 7)1.6.25 PM: approving Sign A1/2 for production
 - 8)1.16.25 MG: Modified tagline to meet 1½" stroke width min. for production
 - 9)1.17.25 BE: rev. to show low electrical penetrations req'd

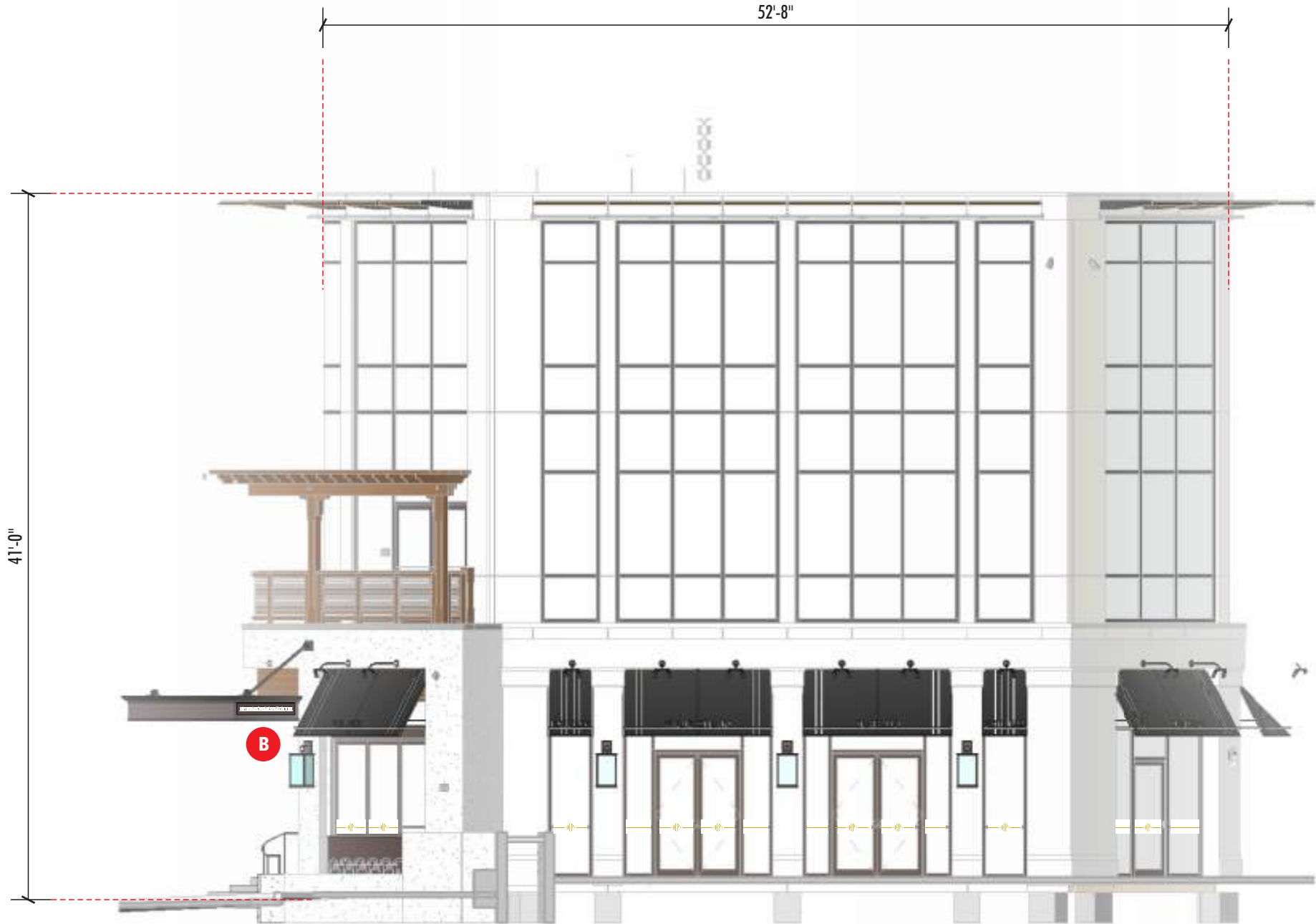
- ☐ Approved
- ☐ Approved as Noted
- ☐ Revise & Resubmit

Drawing No: 24-3218-R09 (PERMIT)

Date: 09.12.2024 BE

Page No: 5.00

This is an original unpublished drawing created by First & Main Signs. It is submitted for your personal use in conjunction with a project being planned for you by First & Main Signs. It is not to be shown to anyone outside your organization, nor is it to be used, reproduced, copied or exhibited in any fashion without written permission from First & Main Signs.



AWNINGS AND WINDOW VINYL NOT PART OF MSP AMENDMENT

A1

A2

HALO-ILLUMINATED LETTERS

SCALE: 1/2" = 1' - 0"

TWO (2) Sets Required

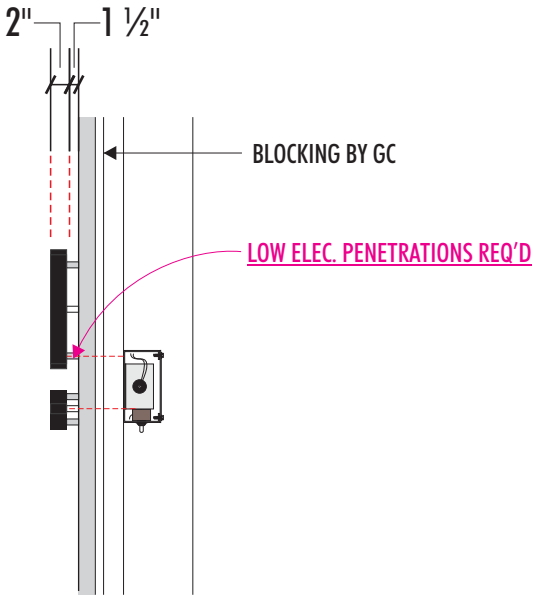
Sign Area = 20.63 sq. ft. ea.

LETTERS

- 2" thk. black PVC
 - Backs pocket-routed to house white 2700k LEDs
- Install to fascia with standoff 1 1/2" spacers and non-corrosive hardware per conditions
- LED power supply(s) to be remote located in UL approved enclosures
 - ACCESS REQUIRED FOR INSTALLATION AND SERVICE

NOTE:

- PRIMARY POWER BY OTHERS
- BLOCKING TO BE PROVIDED BY GC
- ALL EXPOSED MOUNTING HARDWARE & FASTENERS TO BE PAINTED TO MATCH ADJACENT SURFACES
- TOUCH-UP PAINT TO BE PROVIDED BY FIRST AND MAIN



END VIEW



NIGHT VIEW

FIRST & MAIN

SIGNAGE FOR MODERN BRANDS

2340 Shepler Church Ave SW
Canton, OH 44706
234.458.0990

OHIO • CALIFORNIA
COLORADO • INDIANA
OKLAHOMA

Location:

HYDE PARK
PRIME STEAKHOUSE
601 E. Atlantic Ave #109
Delray Beach, FL 33483

Revision:

1)10.11.24 BE: omit C, rev D

2)10.14.24 MG: Show the correct FCO's on awnings per arch dwg's

3)10.21.24 BE: revise D locations, add F

4)10.24.24 BE: updated awning specs; added detail 1.12

5)12.2.24 BE: updated per survey

6)12.9.24 BE: updated w/ provided vector art / font

7)1.6.25 PM: approving Sign A1/2 for production

8)1.16.25 MG: Modified tagline to meet 1 1/2" stroke width min. for production

9)1.17.25 BE: rev. to show low electrical penetrations req'd

☐ Approved

☐ Approved as Noted

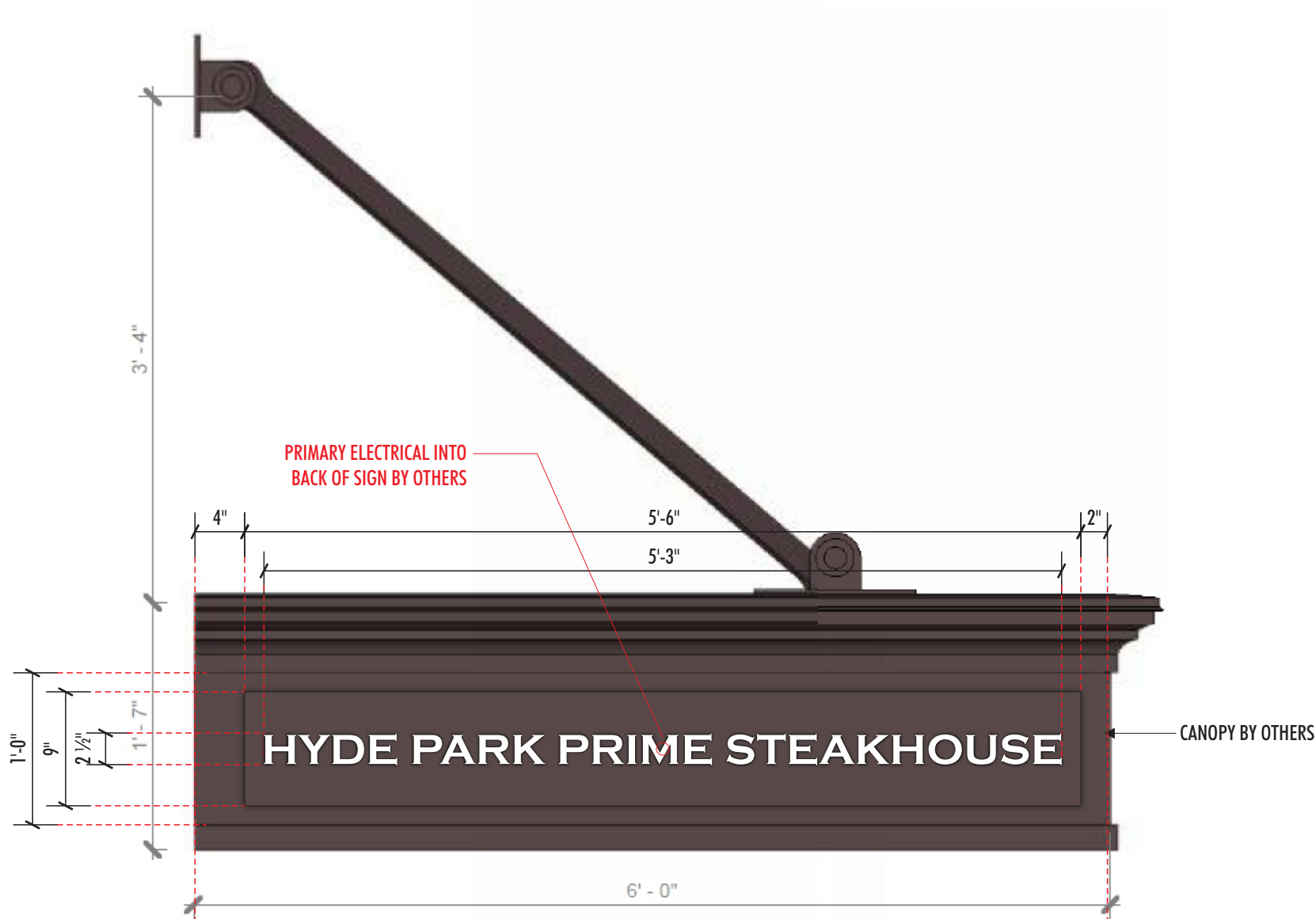
☐ Revise & Resubmit

Drawing No: 24-3218-R09 (PERMIT)

Date: 09.12.2024 BE

Page No: 6.00

This is an original unpublished drawing created by First & Main Signs. It is submitted for your personal use in conjunction with a project being planned for you by First & Main Signs. It is not to be shown to anyone outside your organization, nor is it to be used, reproduced, copied or exhibited in any fashion without written permission from First & Main Signs.



B

ILLUMINATED CABINET - ROUTE-OUT / PUSH-THRU

SCALE: 1" = 1' - 0"

TWO (2) Required

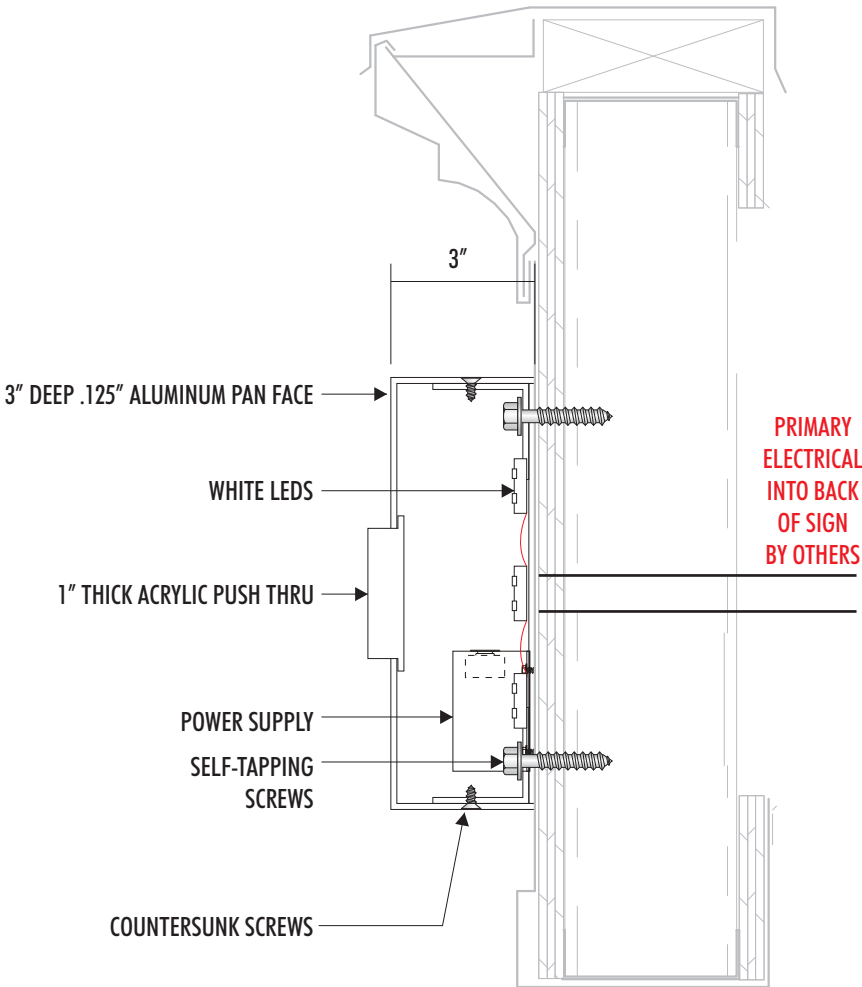
Sign Area = 15.0 sq. ft. ea.

SPECIFICATIONS

- 3" deep fabricated aluminum cabinet w/ route-out / push-thru copy
- - 1" thk. white acrylic (#7328), 3/4" proud of face
- Internally illuminated with white 2700k LEDs
- Install flush to side of canopy
- Coordinate installation with canopy manufacturer
- Primary power by others. Coordinate electrical requirements with GC.

COLOR SCHEDULE:

PTM CANOPY
SW 7069
IRON ORE



1

SECTION DETAIL

SCALE: 3" = 1'-0"



NIGHT VIEW

FIRST & MAIN

SIGNAGE FOR MODERN BRANDS

2340 Shepler Church Ave SW
Canton, OH 44706
234.458.0990

OHIO • CALIFORNIA
COLORADO • INDIANA
OKLAHOMA

Location:

HYDE PARK
PRIME STEAKHOUSE
601 E. Atlantic Ave #109
Delray Beach, FL 33483

Revision:

- 1)10.11.24 BE: omit C, rev D
- 2)10.14.24 MG: Show the correct FCO's on awnings per arch dwg's
- 3)10.21.24 BE: revise D locations, add F
- 4)10.24.24 BE: updated awning specs; added detail 1.12
- 5)12.2.24 BE: updated per survey
- 6)12.9.24 BE: updated w/ provided vector art / font
- 7)1.6.25 PM: approving Sign A1/2 for production
- 8)1.16.25 MG: Modified tagline to meet 1 1/2" stroke width min. for production
- 9)1.17.25 BE: rev. to show low electrical penetrations req'd

- ☐ Approved
- ☐ Approved as Noted
- ☐ Revise & Resubmit

Drawing No: 24-3218-R09 (PERMIT)

Date: 09.12.2024 BE

Page No: 7.00

This is an original unpublished drawing created by First & Main Signs. It is submitted for your personal use in conjunction with a project being planned for you by First & Main Signs. It is not to be shown to anyone outside your organization, nor is it to be used, reproduced, copied or exhibited in any fashion without written permission from First & Main Signs.

Location:

HYDE PARK
PRIME STEAKHOUSE
601 E. Atlantic Ave #109
Delray Beach, FL 33483

Revision:

- 1)10.11.24 BE: omit C, rev D
- 2)10.14.24 MG: Show the correct FCO's on awnings per arch drwgs
- 3)10.21.24 BE: revise D locations, add F
- 4)10.24.24 BE: updated awning specs; added detail 1.12
- 5)12.2.24 BE: updated per survey
- 6)12.9.24 BE: updated w/ provided vector art / font
- 7)1.6.25 PM: approving Sign A1/2 for production
- 8)1.16.25 MG: Modified tagline to meet 1½" stroke width min. for production
- 9)1.17.25 BE: rev. to show low electrical penetrations req'd

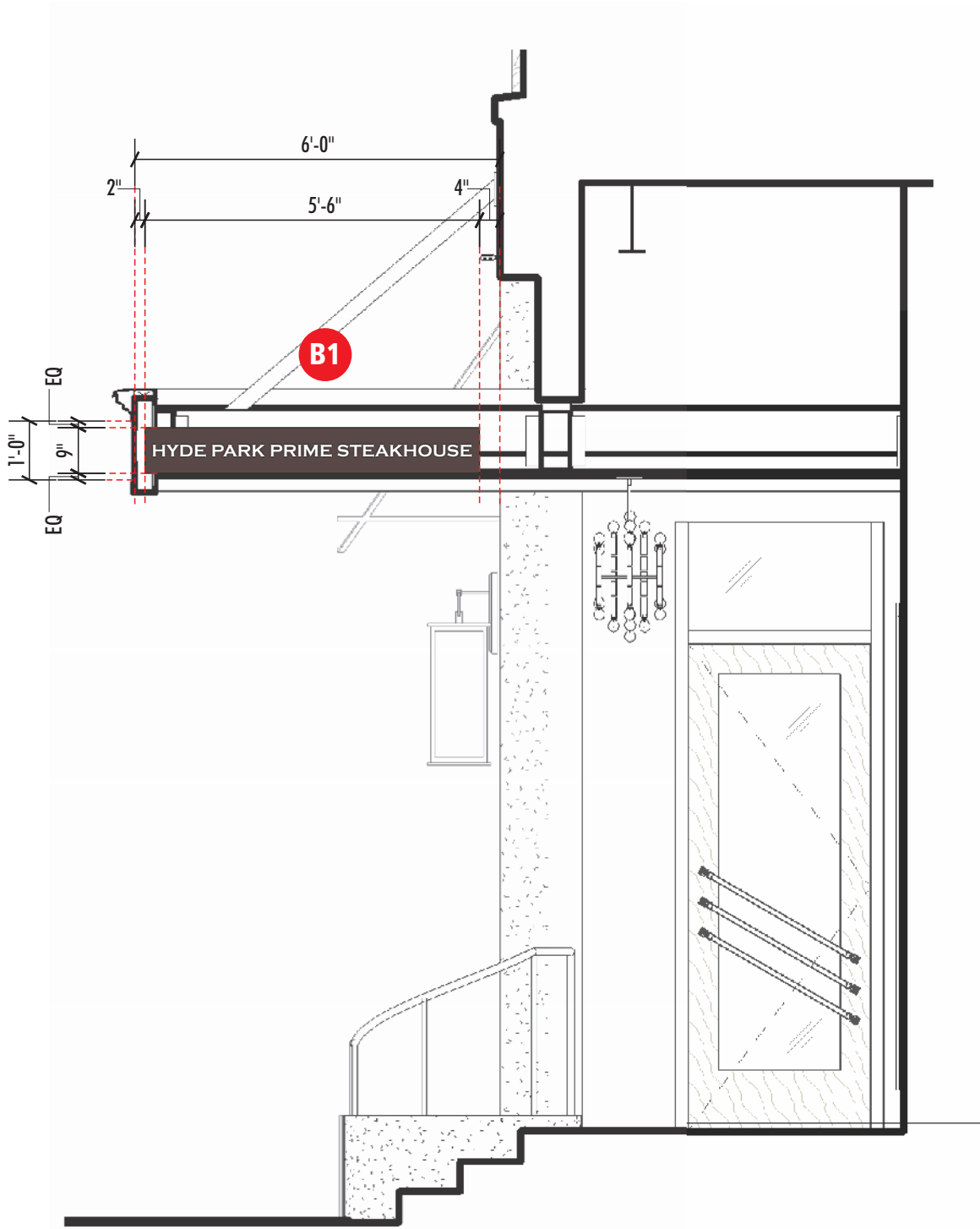
- ☐ Approved
- ☐ Approved as Noted
- ☐ Revise & Resubmit

Drawing No: 24-3218-R09 (PERMIT)

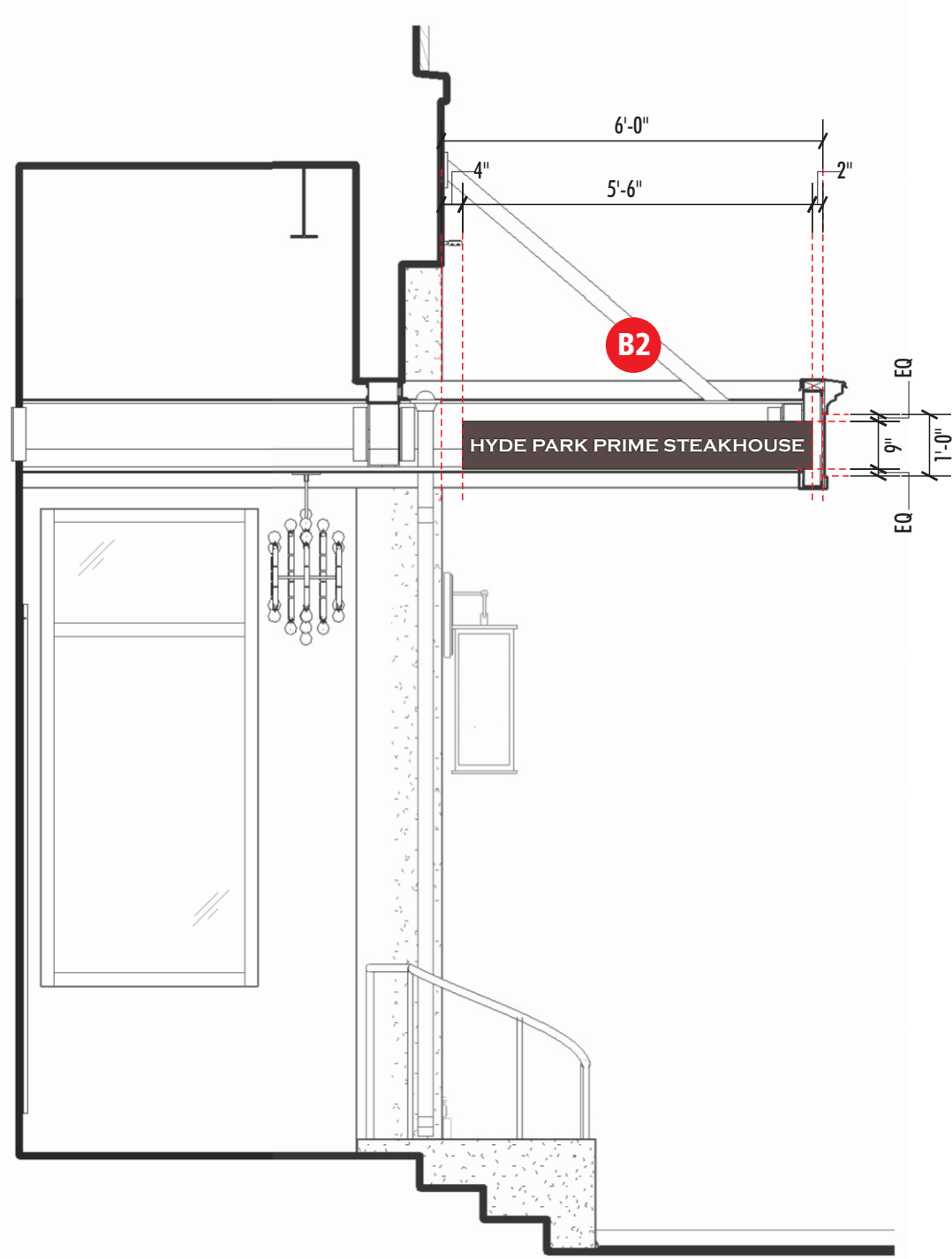
Date: 09.12.2024 BE

Page No: 8.00

This is an original unpublished drawing created by First & Main Signs. It is submitted for your personal use in conjunction with a project being planned for you by First & Main Signs. It is not to be shown to anyone outside your organization, nor is it to be used, reproduced, copied or exhibited in any fashion without written permission from First & Main Signs.



1 CANOPY NORTH ELEVATION
SCALE: 3/8" = 1'-0"



2 CANOPY SOUTH ELEVATION
SCALE: 3/8" = 1'-0"

2340 Shepler Church Ave SW
Canton, OH 44706
234.458.0990

OHIO • CALIFORNIA
COLORADO • INDIANA
OKLAHOMA

Location:
**HYDE PARK
PRIME STEAKHOUSE**
601 E. Atlantic Ave #109
Delray Beach, FL 33483

- Revision:
- 1)10.11.24 BE: omit C, rev D
 - 2)10.14.24 MG: Show the correct FCO's on awnings per arch dwg's
 - 3)10.21.24 BE: revise D locations, add F
 - 4)10.24.24 BE: updated awning specs; added detail 1.12
 - 5)12.2.24 BE: updated per survey
 - 6)12.9.24 BE: updated w/ provided vector art / font
 - 7)1.6.25 PM: approving Sign A1/2 for production
 - 8)1.16.25 MG: Modified tagline to meet 1 1/2" stroke width min. for production
 - 9)1.17.25 BE: rev. to show low electrical penetrations req'd

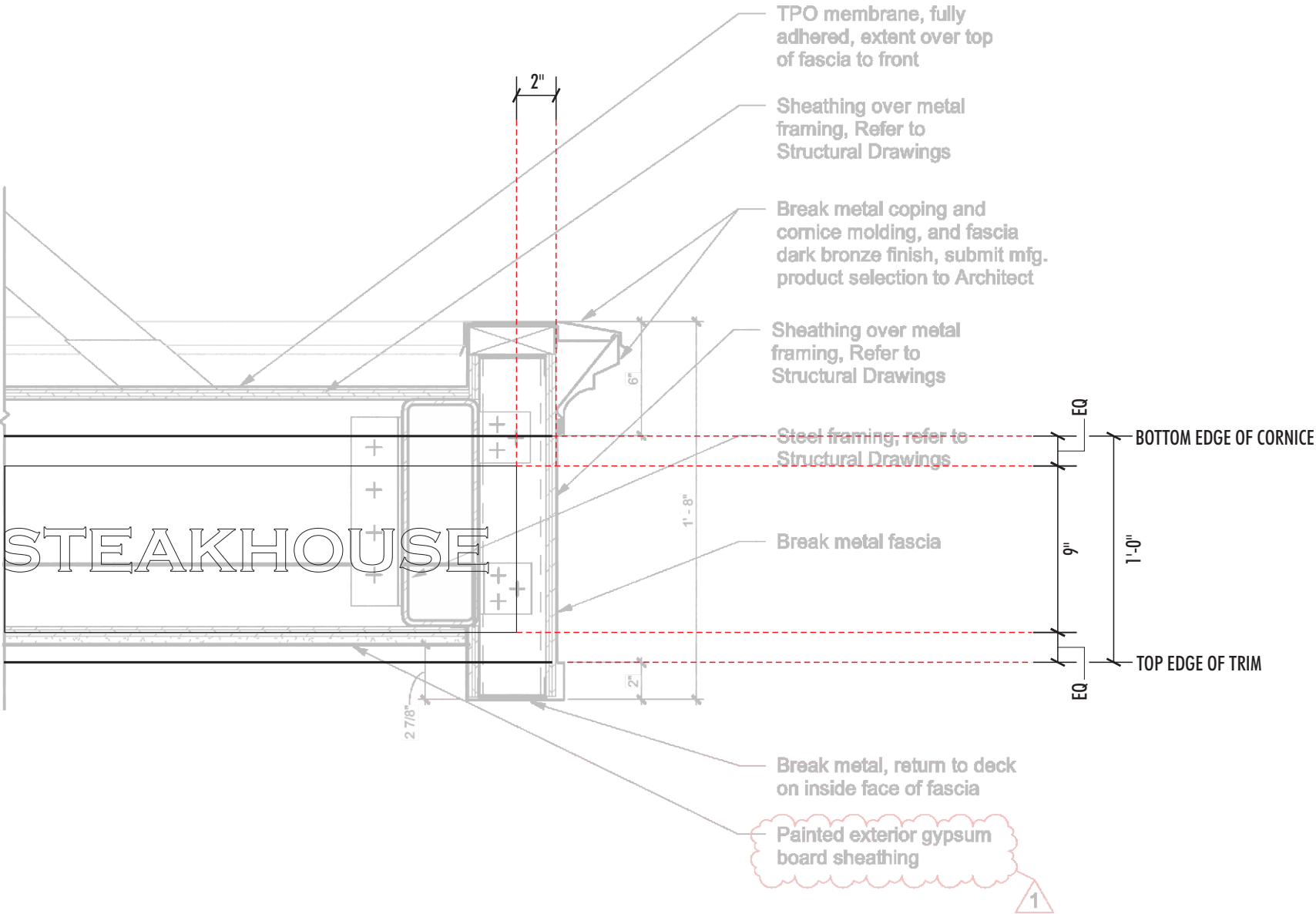
- ☐ Approved
- ☐ Approved as Noted
- ☐ Revise & Resubmit

Drawing No: 24-3218-R09 (PERMIT)

Date: 09.12.2024 BE

Page No: 9.00

This is an original unpublished drawing created by First & Main Signs. It is submitted for your personal use in conjunction with a project being planned for you by First & Main Signs. It is not to be shown to anyone outside your organization, nor is it to be used, reproduced, copied or exhibited in any fashion without written permission from First & Main Signs.



1 SIGN OVERLAY ON CANOPY DETAIL

SCALE: 1 1/2" = 1'-0"

Location:
**HYDE PARK
PRIME STEAKHOUSE**
601 E. Atlantic Ave #109
Delray Beach, FL 33483

- Revision:
- 1)10.11.24 BE: omit C, rev D
 - 2)10.14.24 MG: Show the correct FCO's on awnings per arch drwgs
 - 3)10.21.24 BE: revise D locations, add F
 - 4)10.24.24 BE: updated awning specs; added detail 1.12
 - 5)12.2.24 BE: updated per survey
 - 6)12.9.24 BE: updated w/ provided vector art / font
 - 7)1.6.25 PM: approving Sign A1/2 for production
 - 8)1.16.25 MG: Modified tagline to meet 1 1/2" stroke width min. for production
 - 9)1.17.25 BE: rev. to show low electrical penetrations req'd

- ☐ Approved
- ☐ Approved as Noted
- ☐ Revise & Resubmit

Drawing No: 24-3218-R09 (PERMIT)

Date: 09.12.2024 BE

Page No: 10.00

This is an original unpublished drawing created by First & Main Signs. It is submitted for your personal use in conjunction with a project being planned for you by First & Main Signs. It is not to be shown to anyone outside your organization, nor is it to be used, reproduced, copied or exhibited in any fashion without written permission from First & Main Signs.

