

LANDSCAPE NOTES

ALL LANDSCAPE MATERIAL TO BE FLA. #1 OR BETTER
FLORITAM OR BAHIA SOD AS REQUIRED
MALALEUCA OR EUCALYPTUS MULCH (NO CYRESS) AS REQUIRED TO 3" THICKNESS MINIMUM IN ALL PLANT BEDS
FULLY AUTOMATIC IRRIGATION SYSTEM TO PROVIDE 100% COVERAGE IN 15 MPH WIND
ALL PROHIBITED SPECIES SHALL BE REMOVED FROM SITE PRIOR TO ISSUANCE OF CERTIFICATE OF OCCUPANCY
(INCLUDING ALL "PLEPPC" LISTED SPECIES)

SOD AND IRRIGATION SHALL BE PROVIDED WITHIN THE UNPAVED PORTION OF THE RIGHT-OF-WAY
ADJACENT TO THE PROPERTY LINE

REINFORCED CONCRETE CURBING AT LEAST 6" IN HEIGHT SHALL BE PROVIDED AROUND ALL
LANDSCAPE ISLANDS AND AS A SEPARATOR BETWEEN ALL LANDSCAPED AREAS THAT ARE ADJACENT
TO VEHICULAR USE AREAS UNLESS SUCH CURBING WILL INTERFERE WITH THE DRAINAGE.

ALL NEW LANDSCAPING WITHIN UTILITY EASEMENTS AND WITHIN TEN (10) FEET OF
UNDERGROUND UTILITY INFRASTRUCTURE SHALL COMPLY WITH CHAPTER 155 OF THE
CITY'S CODE OF ORDINANCES AND PSUED UTILITY STANDARDS, DETAILS, AND POLICIES.
NO LANDSCAPING SHALL BE PLANTED IN SUCH A MANNER AS TO ADVERSELY AFFECT
UTILITY INSTALLATION, OPERATION OR MAINTENANCE.
NO LANDSCAPING OTHER THAN SOD GRASSES MAY BE PLANTED WITHIN A FIVE (5) FOOT
RADIUS MAINTENANCE AREA OF ANY UTILITY APPURTENANCES SUCH AS WATER METERS,
BACKFLOW DEVICES, FIRE HYDRANTS, SANITARY SEWER CLEANOUTS, AND MANHOLES, AIR
RELEASE VALVES, ETC. TREES SHALL NOT BE PLANTED WITHIN TEN (10) FEET OF ANY PSUED
INFRASTRUCTURE. ALL MEASUREMENTS ARE FROM OUTSIDE TO OUTSIDE, NOT CENTERLINE TO
CENTERLINE. EXAMPLE: OUTSIDE OF PIPE TO NEAREST POINT ON TREE TRUNK.
TREES SHALL NOT BE PLANTED WITHIN TEN (10) FEET OF ANY LEO MAIN OR APPURTENANCE.

PLANT & MATERIAL SCHEDULE

KEY	QUAN.	NATIVE	DROUGHT TOLERANCE	BOTANICAL NAME	COMMON NAME	SIZE (HT. x SPR.)	CONTAINER
ADO	7	N	MOD.	VEITCHIA MERRILLI	ADONIDIA PALM (DOUBLE)	12-14' O.A. DOUBLE	B & B
CE	22	Y	VERY	CONOCARPUS ERECTUS	GREEN BUTTWOOD	24" x 18"	#5
CI	67	Y	VERY	CHRYSOBALANUS ICAGO	COCOPLUM	24" x 18"	#5
CAT	6	N	MOD.	CHAMADOREA CATARACTARUM	CAT PALM	4' x 4'	#25
CLU	195	Y	MOD.	CLUSIA ROSEA	CLUSIA (PITCH APPLE)	24" x 18"	#5
-	-	-	-	-	-	-	-
-	-	-	-	-	-	-	-
IX	42	N	MOD.	IXORA 'NORA GRANT'	IXORA	24" x 18"	#5
-	-	-	-	-	-	-	-
OAK	4	Y	VERY	QUERCUS VIRGINIANA	LIVE OAK	12-14' O.A. 2-1/2" DBH	B & B
SM	14	Y	MOD.	SWEITENIA MAHAGONI	MAHOGANY	12-14' O.A. 2-1/2" DBH	B & B
SHV	26	N	MOD.	SCHEFFLERA ARBORICOLA 'VARIG.'	DWARF VARIEGATED SCHEFFLERA	24" x 18"	#5
SP	10	Y	VERY	SABAL PALMETTO	SABAL PALM (10' C.T. MIN.)	1/3 - 18, 20, 22' O.A.	B & B
-	-	-	-	-	-	-	-
-	-	-	-	-	-	-	-
-	-	-	-	-	-	-	-
-	-	-	-	-	-	-	-
-	-	-	-	-	-	-	-
-	-	-	-	-	-	-	-

THIS LANDSCAPE PLAN MEETS FDOT SIGHT DISTANCE AND CLEAR ZONE REQUIREMENTS
ALL GROUND MOUNTED MECHANICAL EQUIPMENT TO BE SCREENED WITH SHRUBS

NOTE: PROVIDE SLEEVES UNDER DRIVE FOR ALL IRRIGATION PIPING

811

KNOW WHAT'S BELOW
ALWAYS CALL 811
BEFORE YOU DIG

It's fast. It's free. It's the law.

www.callsunshine.com

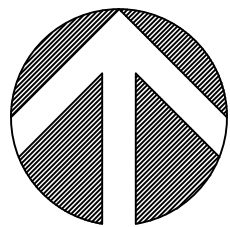
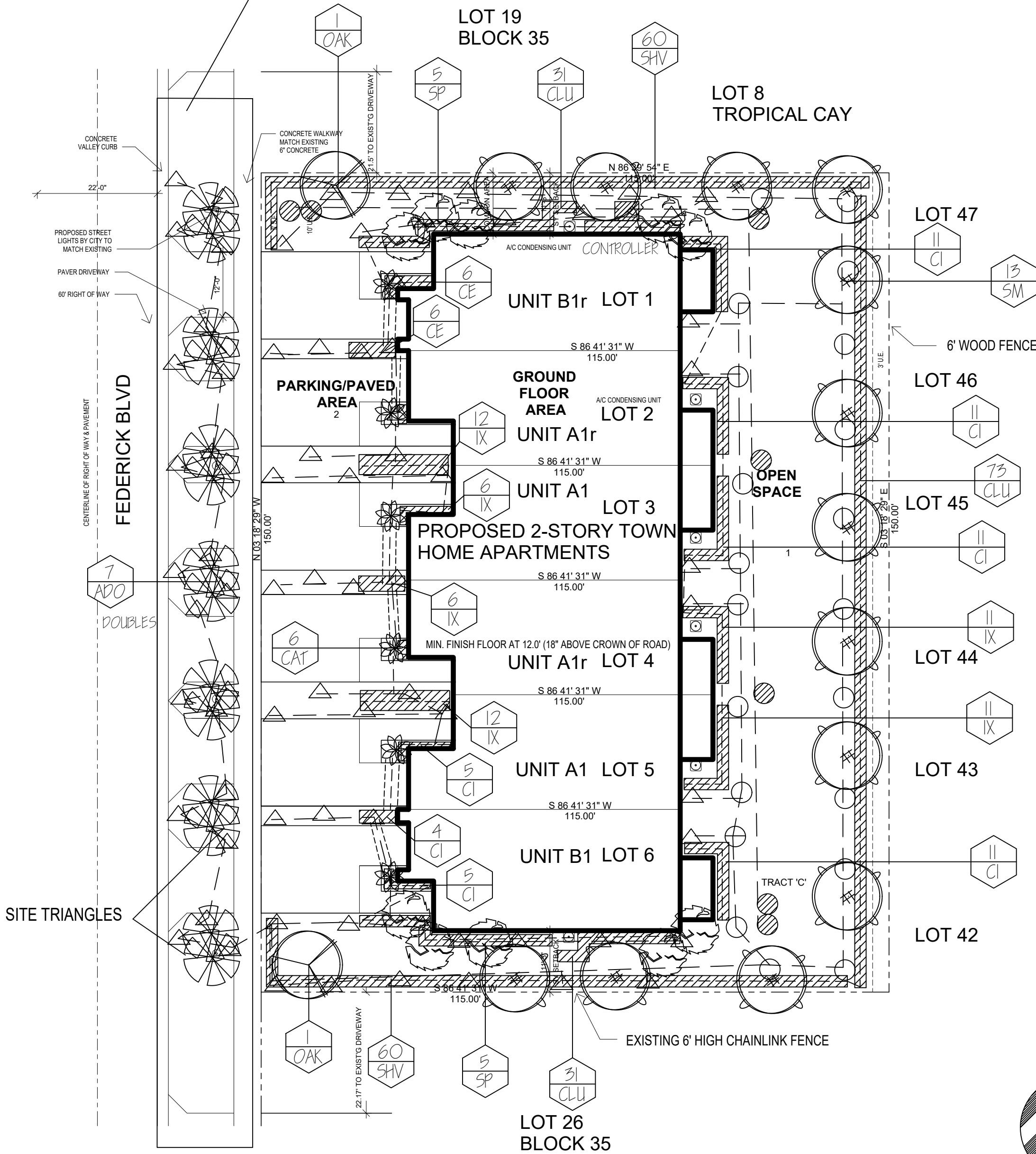
IRRIGATION NOTES

IRRIGATION NOTES
FULLY AUTO MATIC IRRIGATION SYSTEM SHALL PROVIDE 100%
COVERAGE IN 15 MPH WIND
INSTALL BUBBLERS ON ALL TREES AND PALMS
INSTALL DRIPLINE ON ALL HEDGE MATERIALS
INSTALL RAIN SENSOR OVER-RIDE DEVICE AT IRRIGATION TIME CLOCK
SOD AREAS TO BE ZONED SEPARATELY FROM TREE & SHRUB AREAS
IGGIGATION DEVICES SHALL NOT PUT WATER ON IMPERVIOUS SURFACES
IRRIGATION CONTRACTOR SHALL SUBMIT "AS BUILT" IRRIGATION PLAN
INDICATING REVISED ZONES AND REVISED VALVE LOCATIONS OR OTHER
NECESSARY CHANGES AT TIME OF COMPLETION.
NOTE: ANY REVISED IRRIGATION PLAN SHALL MEET OR EXCEED THE
MINIMUM COMPLIANCE SET FORTH WITHIN THE STANDARDS AND
SPECIFICATIONS FOR TURF AND LANDSCAPE IRRIGATION SYSTEMS
PUBLISHED BY THE FLORIDA IRRIGATION SOCIETY AS AMENDED

- IRRIGATION KEY
- INDICATES END STRIP OR SIDE STRIP MIST HEAD
 - △ INDICATES 60, 90, 120, 180, 210, 270, OR 360 DEGREE 4" MIST HEAD, 12' SPACING
 - INDICATES FULL OR PARTIAL CIRCLE GEAR HEAD
 - ⊗ INDICATES 2" ELECTRIC VALVE LOCATION
 - INDICATES DRIPLINE AT HEDGE OR FOUNDATION PLANTING
 - - - - - INDICATES 2" PVC SCHEDULE 40 MAINLINE
 - ===== INDICATES SLEEVE UNDER PAVEMENT FOR IRRIGATION LINE (TWICE PIPE SIZE)
 - ▨ INDICATES PUMP AND CONTROLLER LOCATION
- SPRAY PATTERN TO BE DETERMINED IN FIELD

EQUIPMENT:
RAINBIRD ESP-TM 2 CONTROLLER WITH WI-FI ENABLED RAIN SENSOR

STREET TREES INSIDE WINDOW



Date	Revision

William A. Flint, III

Landscape Architect

Stuart, FL

772.220.0424

FLA. Reg. #941

Fax 772.220.8915

IRRIGATION PLAN

FREDERICK BLVD. RESIDENTIAL BUILDING
2621 FREDERICK BLVD.
DELRAY BEACH, FL

DATE: 10.23.2020
DRAWN: WAF
CHECKED:
SCALE: 1" = 10'
PROJECT NO. 20-049

SEAL

SHEET 11 OF 1