

Arts WAREHOUSE

A Project of the Delray Beach CRA



DELRAY BEACH CRA
COMMUNITY REDEVELOPMENT AGENCY

DECEMBER - JANUARY 2025 REPORT

Exhibitions

Events

First Friday Art Walk - December 6 (100 Visitors)

First Friday Art Walk - Jan 3 (186 Visitors)

Co-Working Studio - Weekly

Art Education

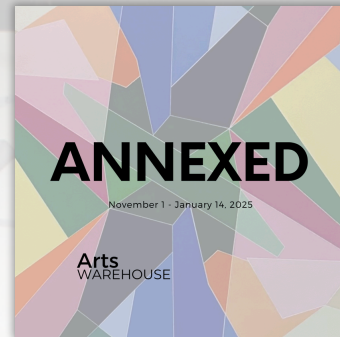


11 Workshops
held in December

29 Workshops
scheduled in
January

[Click Here for Event RSVP](#)

[Click Here for Workshop Registration](#)



**Satellite
exhibition at
the Creative
Art School
Building thru
January 15th**

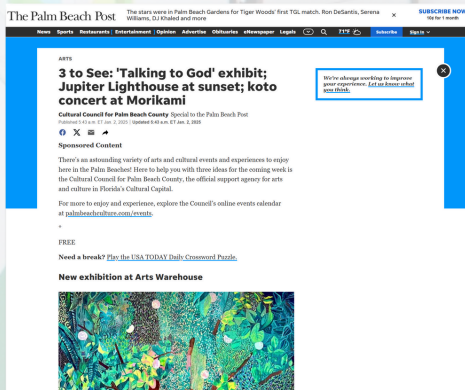


Extended thru January 25th!



New in the Back Room Gallery

In the Press



Latest Exhibition was featured in the "3 To See" segment in the Palm Beach Post (online & Print)

Artist News

18 applications were received for the 2024 Resident Artist Studio Program call for applicants. Reviews and selection will be taking place in late January.

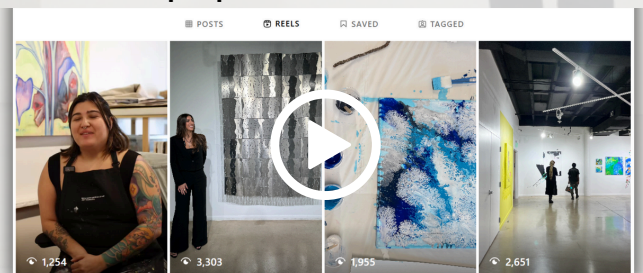


artswarehouse.org

[@artswarehousedelray](https://www.instagram.com/artswarehousedelray)

Social Media

New reels featuring artist talks and workshop clips! Click to view



December 14 - January 14

Instagram Insights:

Accounts Reached 11,670

Followers 7,183 +164

Views 35K

Arts Warehouse

Regular Business Hours for visitors are:

Wednesday - Friday 10am - 7pm,

Saturday 10am - 5pm, or by appointment



This Delray Beach Community Redevelopment Agency rehabilitated warehouse is located on Artist Alley in the Pineapple Grove district opened in late 2017. Arts Warehouse is an Art space that includes studio artists, holds gallery exhibitions, visual art workshops, professional development opportunities, talks, and special events. The 15,000 sq. ft. space is a catalyst for economic development and growth within the Pineapple Grove Arts District and the community as a whole, supporting artists as small businesses.

Click here to learn more about the CRA's Redevelopment Efforts