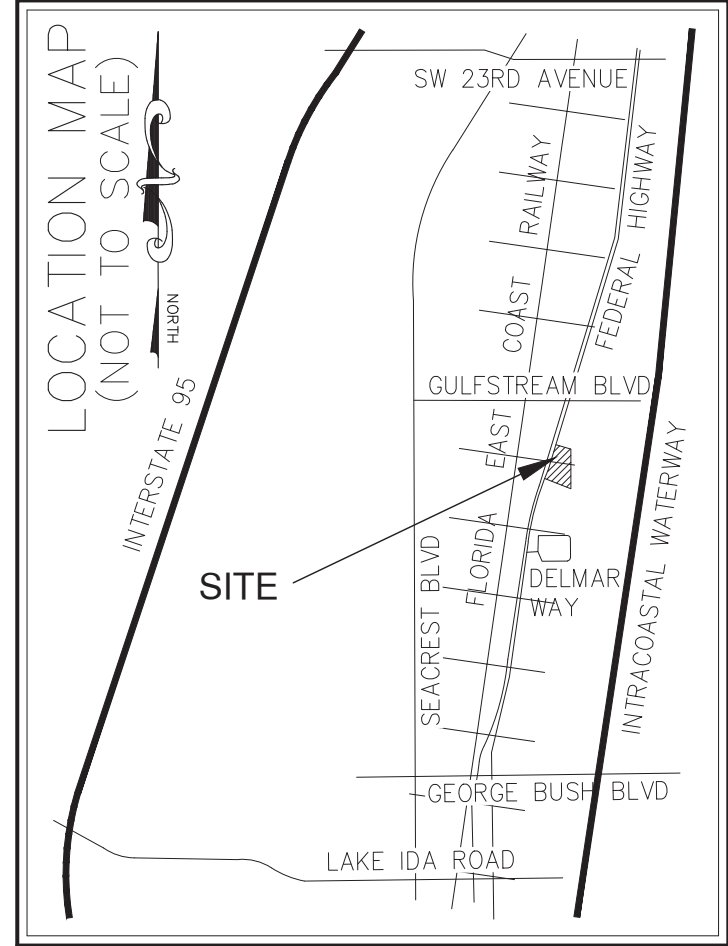




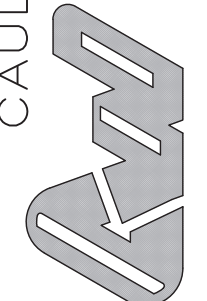
TD-2

TD-3



121102025	DATE	JEM	BY
09162025		JEM	
REVISIONS			
FILE NAME: 10905LAND			
City Comments - Oaks over 55% relocated			
City Comments - Delmar sign DBI revised			

CAULFIELD & WHEELER, INC.
 CIVIL ENGINEERING
 LANDSCAPE ARCHITECTURE - SURVEYING
 7000 GLADES ROAD - SUITE 100
 BOCA RATON, FLORIDA 33434
 PHONE (561) 392-1991 / FAX (561) 750-1452



2419 N. FEDERAL HWY
 TREE DISPOSITION PLAN
 DELRAY BEACH, FLORIDA

DATE 05/13/25
 DRAWN BY JEM
 F.B./ PG. --
 SCALE 1" = 30'

SUBMITTED BY:
 G. ALLAN HENDRICKS
 LANDSCAPE ARCHITECT
 No. LA6666974
 STATE OF FLORIDA
 -FOR THE FIRM-
 DATE

JOB # 10908
 SHEET NO.
TD-1
 OF 03 SHEETS



SEE SHEET TD-3

TREE DISPOSITION SCHEDULE

TREES										
TREE #	COMMON NAME	SCIENTIFIC NAME	HEIGHT	CRZ radius	DBH	CONDITION	NOTES	DISPOSITION	TREES	PALMS
1	Queen Palm	Syagrus ramonzoifciana	10	4	-	40%	Planted too deep	REMOVE		REMOVE
2	Christmas Palm (Double)	Adonidia merrilli	7	4	-	50%	2 trunks 7'14"	REMOVE		REMOVE
3	Alexander Palm (Double)	Ptychosperma elegans	14	4	-	30%	2 trunks 14'	REMOVE		REMOVE
4	Mango	Mangifera indica	24	12	12	30%	Power lines, main leader broken	REMOVE	REMOVE	
5	Mango	Mangifera indica	24	12	12	30%	Power lines, over lifted	REMOVE	REMOVE	
6	Sabal Palm	Sabal palmetto	21	4	-	80%	Planted too deep	REMOVE		REMOVE
7	Strangler Fig	Ficus aurea	40	43	43.5	40%	Large decaying 1st order branches and stubs, restricted root 1 side	REMOVE	REMOVE	
8	Sabal Palm	Sabal palmetto	11	4	-	50%		REMOVE		REMOVE
9	Laurel Oak	Quercus laurifolia	30	19	19	40%	Multi co-dom with inclusions, girdling root	REMOVE	REMOVE	
10	Live Oak	Quercus virginiana	25	16	16	55%	Deformed root plate	REMOVE	REMOVE	
11	Black Olive	Bucida buceras	14	5	5	20%	Co-canopy	REMOVE	REMOVE	
12	Black Olive	Bucida buceras	14	4	4	20%	Co-canopy	REMOVE	REMOVE	
13	Black Olive	Bucida buceras	14	6	6	30%	Co-canopy	REMOVE	REMOVE	
14	Live Oak	Quercus virginiana	30	17	17	70%	Co-dom	RELOCATE	RELOCATE	
15	Live Oak	Quercus virginiana	20	9	9	30%	Co-canopy	REMOVE	REMOVE	
16	Live Oak	Quercus virginiana	20	17	17.5	30%	Co-canopy, sweeping trunk	REMOVE	REMOVE	
17	Live Oak	Quercus virginiana	40	12	12	60%	-	RELOCATE	RELOCATE	
18	Sabal Palm	Sabal palmetto	6	4	-	70%	-	REMOVE		REMOVE
19	Gumbo Limbo	Bursera simaruba	14	9	9	60%	Poor structure	REMOVE	REMOVE	
20	Black Olive	Bucida buceras	50	18	18	30%	Non-symmetrical canopy, decay 1st order branch	REMOVE	REMOVE	
21	Laurel Oak	Quercus laurifolia	30	21	21	50%	Multi co-dom with inclusions, center leader dying	REMOVE	REMOVE	
22	Live Oak	Quercus virginiana	50	18	18	40%	Non symmetrical canopy	REMOVE	REMOVE	
23	Sabal Palm	Sabal palmetto	7	4	-	80%	-	REMOVE		REMOVE
24	Strangler Fig	Ficus aurea	50	120	120	40%	Non symmetrical canopy, past storm damage	REMOVE	REMOVE	
25	Sabal Palm	Sabal palmetto	7	4	-	70%	-	REMOVE		REMOVE
Total Palms/Trees Removed			Mitigation Required	Mitigation Provided						
2	Palms <50%	1:1	1:1	2 palms @ 18' HL.	mitigation	mitigation				
6	Palms <50%	59 Ft.	70 Ft.	5 palms @ 14' HL.	mitigation	mitigation				
12	Trees <50%	1:1	1:1	12 trees @ 3" CAL.	mitigation	mitigation				
5	Trees >50%	75" DBH	75" CAL.	15 trees @ 5" CAL.	mitigation	mitigation				

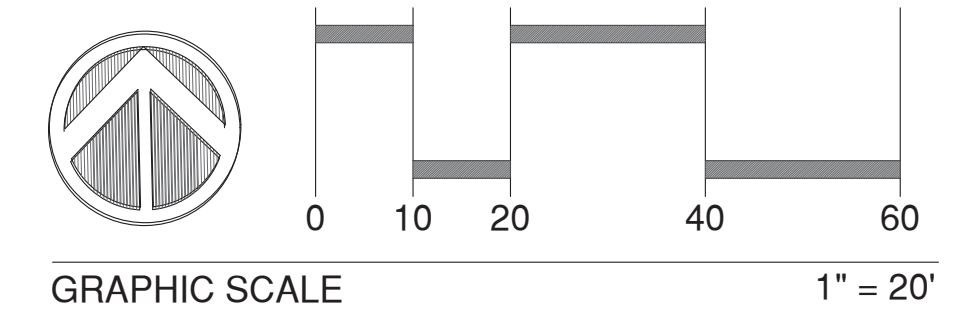
MITIGATION SCHEDULE

MITIGATED TREES AND PALMS TO BE PROVIDED ON SITE						
	QUANTITY	COMMON NAME	SCIENTIFIC NAME	SPEC.	NOTES	LOCATION
PALMS 1:1	2	Sabal Palm	Sabal palmetto	18' OA HT.	PALM FOR PALM	SHEET LP-2
PALMS 59 FL	5	Sabal Palm	Sabal palmetto	20' OA HT.	COMPARABLE PALM	SHEET LP-2
TREES 1:1	8	Bridal Veil	Caesalpinia grandillo	20' OA HT. 8" SPR x 6" CAL.	TREE FOR TREE	SHEET LP-2
TREES 1:1	9	Gumbo Limbo	Bursera simaruba	20' OA HT. 8" SPR x 6" CAL.	TREE FOR TREE	SHEET LP-3
TREES 1:1	1	Royal Poinsettia	Delonix regia	20' OA HT. 8" SPR X 6" CAL.	COMPARABLE TREE	SHEET LP-2
TREES 1:1	1	Mahogany	Swetania mahogany	20' OA HT. 8" SPR X 6" CAL.	COMPARABLE TREE	SHEET LP-2

Call 48 hours before you dig
1-800-432-4770

It's the law!
1-800-432-4770

sunshine state one call of florida, inc.



JEM	12/10/2025	BY
JEM	09/16/2025	DATE
REVISIONS		
FILE NAME: 10908.AXD		

CAULFIELD & WHEELER, INC.
CIVIL ENGINEERING
LANDSCAPE ARCHITECTURE - SURVEYING
7900 GLADES ROAD - SUITE 100
BOCA RATON, FLORIDA 33434
PHONE (561) 392-1991 / FAX (561) 750-1462

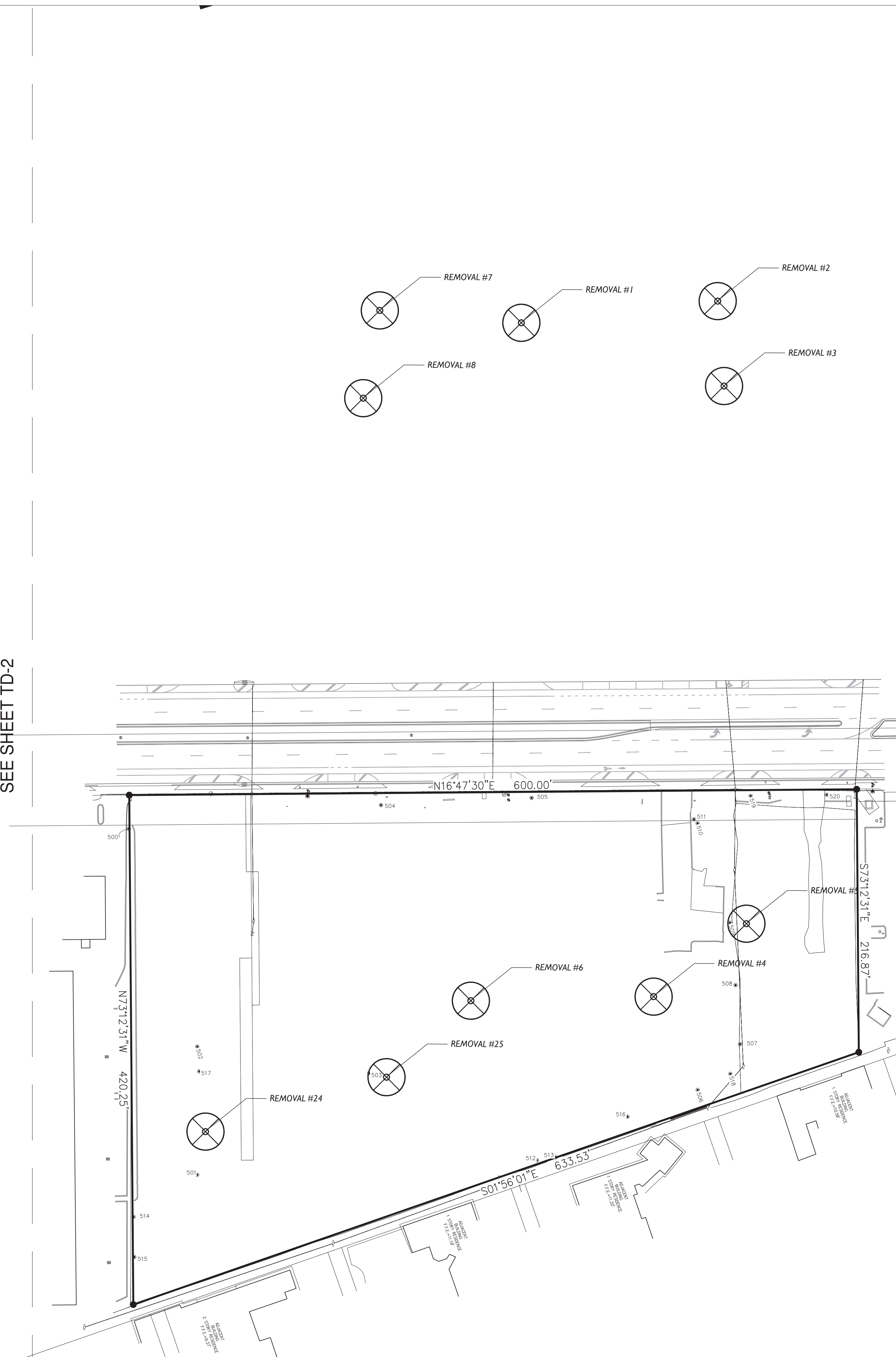
2419 N. FEDERAL HWY
FLORIDA
DELRAY BEACH
TREE DISPOSITION PLAN

DATE	05/13/25
DRAWN BY	JEM
F.B./ PG.	--
SCALE	1" = 20'

SUBMITTED BY:
G. ALLAN HENDRICKS
LANDSCAPE ARCHITECT
No. LA166974
STATE OF FLORIDA
-FOR THE FIRM-
DATE

JOB #	10908
SHT. NO.	TD-2
OF 03 SHEETS	

SEE SHEET TD-2



TREE DISPOSITION SCHEDULE

TREES										
TREE #	COMMON NAME	SCIENTIFIC NAME	HEIGHT	CRZ radius	DBH	CONDITION	NOTES	DISPOSITION	TREES	PALMS
1	Queen Palm	Syagrus ramonzoffiana	10	4	-	40%	Planted too deep	REMOVE		REMOVE
2	Christmas Palm (Double)	Adonidia merrillii	7	4	-	50%	2 trunks 7'14"	REMOVE		REMOVE
3	Alexander Palm (Double)	Ptychosperma elegans	14	4	-	30%	2 trunks 14"	REMOVE		REMOVE
4	Mango	Mangifera indica	24	12	12	30%	Power lines, main leader broken	REMOVE	REMOVE	
5	Mango	Mangifera indica	24	12	12	30%	Power lines, over lifted	REMOVE	REMOVE	
6	Sabal Palm	Sabal palmetto	21	4	-	80%	Planted too deep	REMOVE		REMOVE
7	Strangler Fig	Ficus aurea	40	43	43.5	40%	Large decaying 1st order branches and stubs, restricted root 1 side	REMOVE	REMOVE	
8	Sabal Palm	Sabal palmetto	11	4	-	50%		REMOVE		REMOVE
9	Laurel Oak	Quercus laurifolia	30	19	19	40%	Multi co-dom with inclusions, girdling root	REMOVE	REMOVE	
10	Live Oak	Quercus virginiana	25	16	16	55%	Deformed root plate	REMOVE	REMOVE	
11	Black Olive	Bucida buceras	14	5	5	20%	Co-canopy	REMOVE	REMOVE	
12	Black Olive	Bucida buceras	14	4	4	20%	Co-canopy	REMOVE	REMOVE	
13	Black Olive	Bucida buceras	14	6	6	30%	Co-canopy	REMOVE	REMOVE	
14	Live Oak	Quercus virginiana	30	17	17	70%	Co-dom	RELOCATE	RELOCATE	
15	Live Oak	Quercus virginiana	20	9	9	30%	Co-canopy	REMOVE	REMOVE	
16	Live Oak	Quercus virginiana	20	17	17.5	30%	Co-canopy, sweeping trunk	REMOVE	REMOVE	
17	Live Oak	Quercus virginiana	40	12	12	60%	-	RELOCATE	RELOCATE	
18	Sabal Palm	Sabal palmetto	6	4	-	70%	-	REMOVE		REMOVE
19	Gumbo Limbo	Bursera simaruba	14	9	9	60%	Poor structure	REMOVE	REMOVE	
20	Black Olive	Bucida buceras	50	18	18	30%	Non-symmetrical canopy, decay 1st order branch	REMOVE	REMOVE	
21	Laurel Oak	Quercus laurifolia	30	21	21	50%	Multi co-dom with inclusions, center leader dying	REMOVE	REMOVE	
22	Live Oak	Quercus virginiana	50	18	18	40%	Non symmetrical canopy	REMOVE	REMOVE	
23	Sabal Palm	Sabal palmetto	7	4	-	80%	-	REMOVE		REMOVE
24	Strangler Fig	Ficus aurea	50	120	120	40%	Non symmetrical canopy, past storm damage	REMOVE	REMOVE	
25	Sabal Palm	Sabal palmetto	7	4	-	70%	-	REMOVE		REMOVE

Total Palms/Trees Removed	Mitigation Required	Mitigation Provided
2 Palms <50%	1:1	1:1
6 Palms <50%	59 Ft.	70 Ft.
12 Trees <50%	1:1	1:1
5 Trees >50%	75" DBH	75" CAL

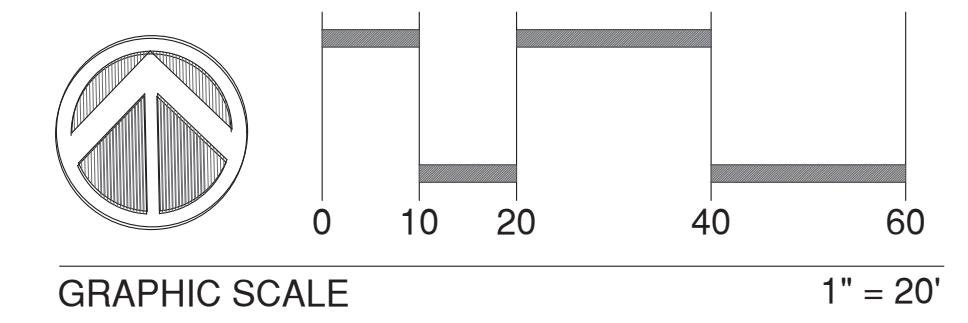
QUANTITY	COMMON NAME	SCIENTIFIC NAME	SPEC.	NOTES	LOCATION
2	Sabal Palm	Sabal palmetto	18' OA HT.	PALM FOR PALM	SHEET LP-2
5	Sabal Palm	Sabal palmetto	20' OA HT.	COMPARABLE PALM	SHEET LP-2
8	Bridal Veil	Caesalpinia grandillo	20' OA HT. 8' SPR x 6" CAL.	TREE FOR TREE	SHEET LP-2
9	Gumbo Limbo	Bursera simaruba	20' OA HT. 8' SPR x 6" CAL.	TREE FOR TREE	SHEET LP-3
1	Royal Poinsettia	Delonix regia	20' OA HT. 8' SPR X 6" CAL.	COMPARABLE TREE	SHEET LP-2
1	Mahogany	Swetlania mahoganii	20' OA HT. 8' SPR X 6" CAL.	COMPARABLE TREE	SHEET LP-2

MITIGATION SCHEDULE

MITIGATED TREES AND PALMS TO BE PROVIDED ON SITE

QUANTITY	COMMON NAME	SCIENTIFIC NAME	SPEC.	NOTES	LOCATION
2	Sabal Palm	Sabal palmetto	18' OA HT.	PALM FOR PALM	SHEET LP-2
5	Sabal Palm	Sabal palmetto	20' OA HT.	COMPARABLE PALM	SHEET LP-2
8	Bridal Veil	Caesalpinia grandillo	20' OA HT. 8' SPR x 6" CAL.	TREE FOR TREE	SHEET LP-2
9	Gumbo Limbo	Bursera simaruba	20' OA HT. 8' SPR x 6" CAL.	TREE FOR TREE	SHEET LP-3
1	Royal Poinsettia	Delonix regia	20' OA HT. 8' SPR X 6" CAL.	COMPARABLE TREE	SHEET LP-2
1	Mahogany	Swetlania mahoganii	20' OA HT. 8' SPR X 6" CAL.	COMPARABLE TREE	SHEET LP-2

Call 48 hours before you dig
It's the law!
1-800-432-4770
sunshine state one call of florida, inc.



12/10/2025	JEM	DATE	BY
09/16/2025	JEM	DATE	BY
REVISIONS			
FILE NAME: 10908.DWG			

CAULFIELD & WHEELER, INC.
CIVIL ENGINEERING
LANDSCAPE ARCHITECTURE - SURVEYING
7900 GADES ROAD - SUITE 100
BOCA RATON, FLORIDA 33434
PHONE (561) 392-1991 / FAX (561) 750-1452

2419 N. FEDERAL HWY
DELRAY BEACH, FLORIDA
TREE DISPOSITION PLAN

DATE	05/13/25
DRAWN BY	JEM
F.B./ PG.	--
SCALE	1"=20'

SUBMITTED BY:
G. ALLAN HENDRICKS
LANDSCAPE ARCHITECT
No. LA666974
STATE OF FLORIDA
-FOR THE FIRM-
DATE

JOB # 10908
SHT. NO.
TD-3
OF 03 SHEETS