

Exhibit 'A'

SKETCH OF DESCRIPTION

THIS IS NOT A SURVEY

THE SOUTH FIVE (5) FEET FOR GENERAL UTILITY PURPOSES OF THE FOLLOWING DESCRIBED PARCEL OF LAND:

PARCEL 1

LOT 1 AND THE EAST 3 FEET OF LOT 2, SUBDIVISION OF THE W. 170 FT OF THE N 1/2 OF BLOCK 164 LESS THE NORTH 17 FEET THEREOF, CITY OF DELRAY BEACH, FLORIDA, ACCORDING TO THE MAP OR PLAT THEREOF AS RECORDED IN PLAT BOOK 18, PAGE 47, PUBLIC RECORDS OF PALM BEACH COUNTY, FLORIDA.

PARCEL 2

THE NORTH 10 FEET OF THE EAST 53 FEET OF LOT 4, SUBDIVISION OF THE W. 170 FT OF THE N 1/2 OF BLOCK 164 LESS THE NORTH 17 FEET THEREOF, CITY OF DELRAY BEACH, FLORIDA, ACCORDING TO THE MAP OR PLAT THEREOF AS RECORDED IN PLAT BOOK 18, PAGE 47, PUBLIC RECORDS OF PALM BEACH COUNTY, FLORIDA.

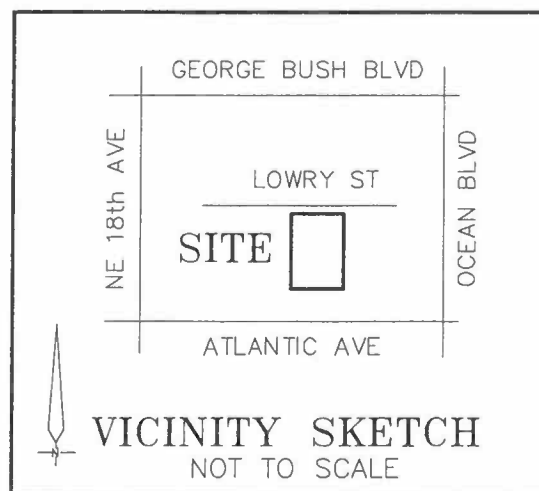
AND

PARCEL 1

THE NORTH 110 FEET OF THE WEST 170 FEET OF THE SUBDIVISION RECORDED AT PLAT BOOK 18, PAGE 47 OF THE PUBLIC RECORDS OF PALM BEACH COUNTY, FLORIDA (SAID PLAT DESIGNATED AS A SUBDIVISION OF THE WEST 170 FEET OF THE NORTH 1/2 OF BLOCK 164, LESS THE NORTH 17 FEET THEREOF), ACCORDING TO THE PLAT FILED IN PLAT BOOK 1, PAGE 25 OF THE PUBLIC RECORDS OF PALM BEACH COUNTY, FLORIDA, LESS THE WEST 55 FEET THEREOF AND LESS THE EAST 53 FEET THEREOF.

PARCEL 2

THE SOUTH 10 FEET OF THE NORTH 120 FEET OF THE EAST 115 FEET OF THE WEST 170 FEET, LESS THE EAST 53 FEET THEREOF, ACCORDING TO THE PLAT THEREOF ON FILE IN THE OFFICE OF THE CLERK OF THE CIRCUIT COURT IN AND FOR PALM BEACH COUNTY, FLORIDA, IN PLAT BOOK 18, PAGE 47.



I HEREBY CERTIFY THAT I MADE THIS SKETCH OF DESCRIPTION AND THAT IT IS TRUE AND CORRECT TO THE BEST OF MY KNOWLEDGE AND BELIEF.

BY

DATE: 07/21/22

ROBERT A. BUGGEE, PROFESSIONAL SURVEYOR AND MAPPER NO. 3302, STATE OF FLORIDA
233 E. GATEWAY BLVD., BOYNTON BEACH, FLORIDA, 33435

DWG # 1203221_UE 1 OF 2

PREPARED BY:
Bob Buggee, Inc.
the 'SURVEYOR'

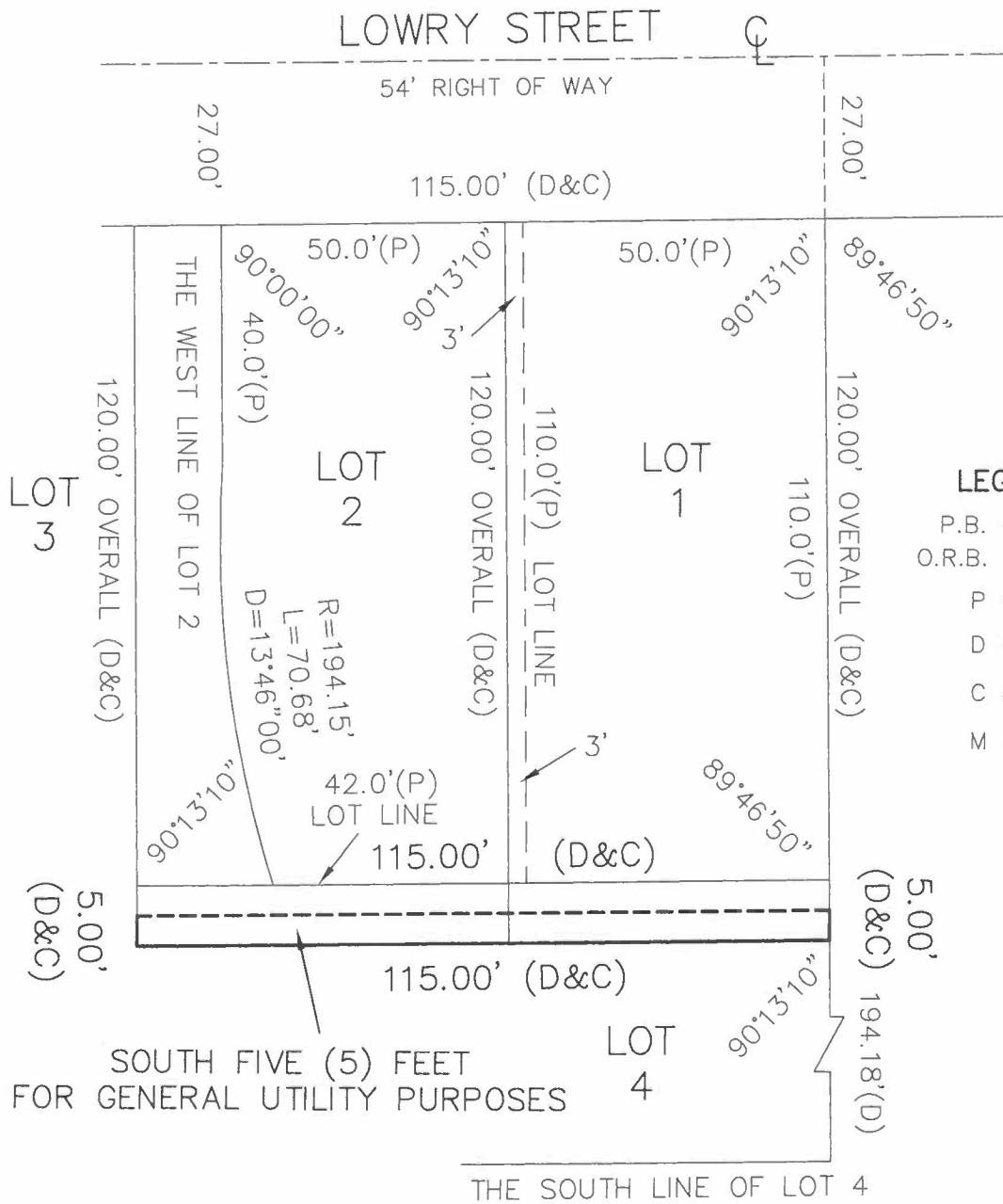
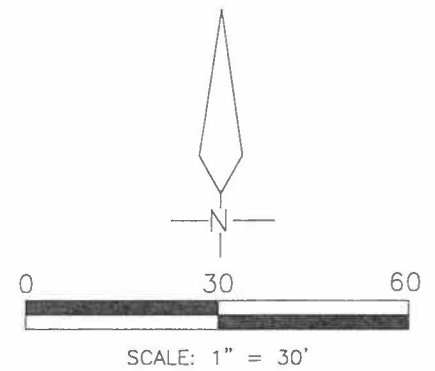
561-732-7877

SHEET 1 OF 2

Exhibit 'A'

SKETCH OF DESCRIPTION

THIS IS NOT A SURVEY



LEGEND

- P.B. = PLAT BOOK
- O.R.B. = OFFICIAL RECORD BOOK
- P = PLAT
- D = DEED
- C = CALCULATED
- M = MEASURED