



Development Services Department

BOARD ACTION REPORT – APPEALABLE ITEM

Project Name: Canal Point Way

Project Location: 435 Canal PT S 1420

Request: Color change

Board: Site Plan Review and Appearance Board

Meeting Date: March 11, 2020

PCN: 12-43-46-32-23-000-1420

Board Vote: Approved on a 5-0 vote (Roger Cope and John Brewer absent)

Board Action:

Approved (5 to 0 Roger Cope and John Brewer)

Project Description:

The subject property is located on the west side of Lindell Blvd and backs the C51 canal. The color change consists of main walls from yellow to “Gray Screen.” The window frames and railings are to be painted “Tricorn Black.” The doors are proposed to change from red to “Resolute Blue” and the ground is to be painted “African Gray.” The yard fences are to change from yellow to “Resolute Blue.” The pool house’s fascia and perimeter wall are to change from yellow to “Resolute Blue” while the columns change to “Tricorn Black” from red and the accent walls from yellow to “Gray Screen.” Lastly, the pavers around the pool are to change from yellow to “African Gray.”

Board Comments:

N/A

Public Comments:

N/A

Associated Actions:

Next Action:

The SPRAB action is final unless appealed by the City Commission.



SITE PLAN REVIEW AND APPEARANCE BOARD STAFF REPORT

DEVELOPMENT SERVICES DEPARTMENT

100 NW 1ST AVENUE, DELRAY BEACH, FLORIDA 33444

PLANNING & ZONING DIVISION: (561) 243-7040 • BUILDING DIVISION: (561) 243-7200

SITE PLAN REVIEW AND APPEARANCE BOARD

Meeting: March 11, 2020

File No.: 2020-122-COL-SPR

Application Type: Color Change

General Data

Agent: Tammy Tatum- President

Location: 243 Canal Point Way – Point at Delray

PCN: 12-43-46-32-23-000-1420

FLUM: Medium Density (MD 5-12 DU/Acre)

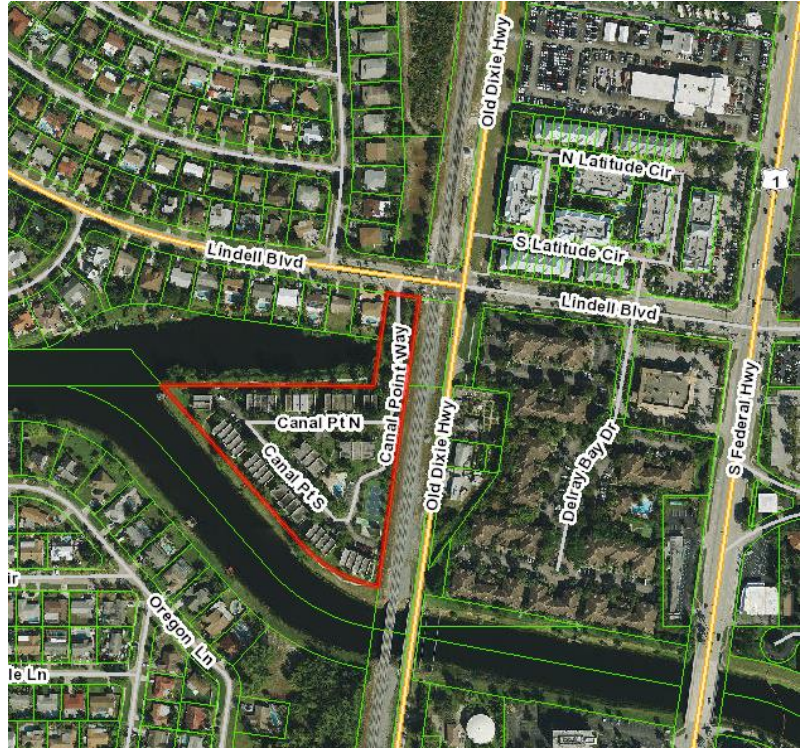
Zoning: Multiple Family Residential (RM)

Adjacent Zoning:

- North: R-1-AA
- South: Outside of Planning Area
- East: PC (Planned Commercial)
- West: Outside of Planning Area/R-1-AA (Single Family Residential)

Existing Land Use: Residential

Proposed Land Use: Residential



Item before the Board:

The item before the board is a color change to the body of the buildings and main walls from yellow to “Gray Screen.” The window frames and railings are to be painted “Tricorn Black.” The doors are proposed to change from red to “Resolute Blue” and the ground is to be painted “African Gray.” The yard fences are to change from yellow to “Resolute Blue.” The pool house’s fascia and perimeter wall are to change from yellow to “Resolute Blue” while the columns change to “Tricorn Black” from red and the accent walls from yellow to “Gray Screen.” Lastly, the pavers around the pool are to change from yellow to “African Gray.”

Project Planner:

Anne Clerisse Gaisha Volcy, Planner in Training;
volcya@mydelraybeach.com

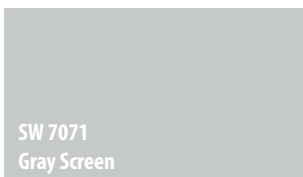
Review Dates:

SPRAB: March 11, 2020

Attachments:

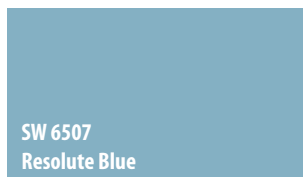
1. Elevations





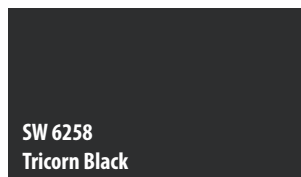
SW 7071
Gray Screen

Lower Body/Columns



SW 6507
Resolute Blue

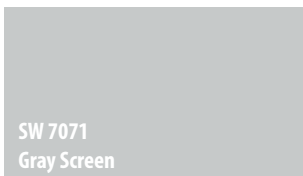
Upper Body/Doors



SW 6258
Tricorn Black

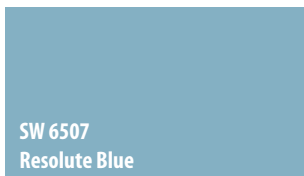
Rails/Window Trim





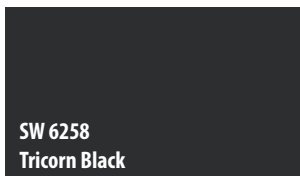
SW 7071
Gray Screen

Lower Body/Columns



SW 6507
Resolute Blue

Upper Body/Doors



SW 6258
Tricorn Black

Rails/Window Trim



125





ORIGINAL

SW 6246
North Star
Locator Number: 225-C1

SW 6796
Blue Plate
Locator Number: 168-C6

SW 9062
Bluebird Feather
Locator Number: 175-C4

SW 6258
Tricorn Black
Locator Number: 251-C1

✓ FEATURED IN SCENE

✓ FEATURED IN SCENE

SW 7071
Gray Screen
Locator Number: 235-C1

SW 6413
Restoration Ivory
Locator Number: 269-C1

✓ FEATURED IN SCENE

SW 6507
Resolute Blue
Locator Number: 175-C3



SHERWIN-WILLIAMS.

Actual color may vary from on-screen representation. To confirm your color choices prior to purchase, please view a physical color chip, color card, or painted sample.

Sherwin-Williams is not responsible for the content and photos shared by users of their color selection tools.







SW 6246
North Star
Locator Number: 225-C1

SW 6796
Blue Plate
Locator Number: 168-C6

SW 9062
Bluebird Feather
Locator Number: 175-C4

SW 6258
Tricorn Black
Locator Number: 251-C1

✓ FEATURED IN SCENE

SW 7071
Gray Screen
Locator Number: 235-C1

SW 6413
Restoration Ivory
Locator Number: 269-C1

✓ FEATURED IN SCENE

SW 6507
Resolute Blue
Locator Number: 175-C3



SHERWIN-WILLIAMS.

Actual color may vary from on-screen representation. To confirm your color choices prior to purchase, please view a physical color chip, color card, or painted sample.

Sherwin-Williams is not responsible for the content and photos shared by users of their color selection tools.



ORIGINAL

SW 6246
North Star
 Locator Number: 225-C1

SW 6796
Blue Plate
 Locator Number: 168-C6

SW 9062
Bluebird Feather
 Locator Number: 175-C4

SW 6258
Tricorn Black
 Locator Number: 251-C1

✓ FEATURED IN SCENE

SW 7071
Gray Screen
 Locator Number: 235-C1

SW 6413
Restoration Ivory
 Locator Number: 269-C1

✓ FEATURED IN SCENE

SW 6507
Resolute Blue
 Locator Number: 175-C3

✓ FEATURED IN SCENE

SW 9162
African Gray
 Locator Number: 235-C4



SHERWIN-WILLIAMS.

Actual color may vary from on-screen representation. To confirm your color choices prior to purchase, please view a physical color chip, color card, or painted sample.

Sherwin-Williams is not responsible for the content and photos shared by users of their color selection tools.



SW 6246
North Star
 Locator Number: 225-C1

SW 6796
Blue Plate
 Locator Number: 168-C6

SW 9062
Bluebird Feather
 Locator Number: 175-C4

SW 6258
Tricorn Black
 Locator Number: 251-C1

✓ FEATURED IN SCENE

✓ FEATURED IN SCENE

SW 7071
Gray Screen
 Locator Number: 235-C1

SW 6413
Restoration Ivory
 Locator Number: 269-C1

✓ FEATURED IN SCENE

SW 6507
Resolute Blue
 Locator Number: 175-C3

SW 9162
African Gray
 Locator Number: 235-C4



SHERWIN-WILLIAMS.

Actual color may vary from on-screen representation. To confirm your color choices prior to purchase, please view a physical color chip, color card, or painted sample.

Sherwin-Williams is not responsible for the content and photos shared by users of their color selection tools.