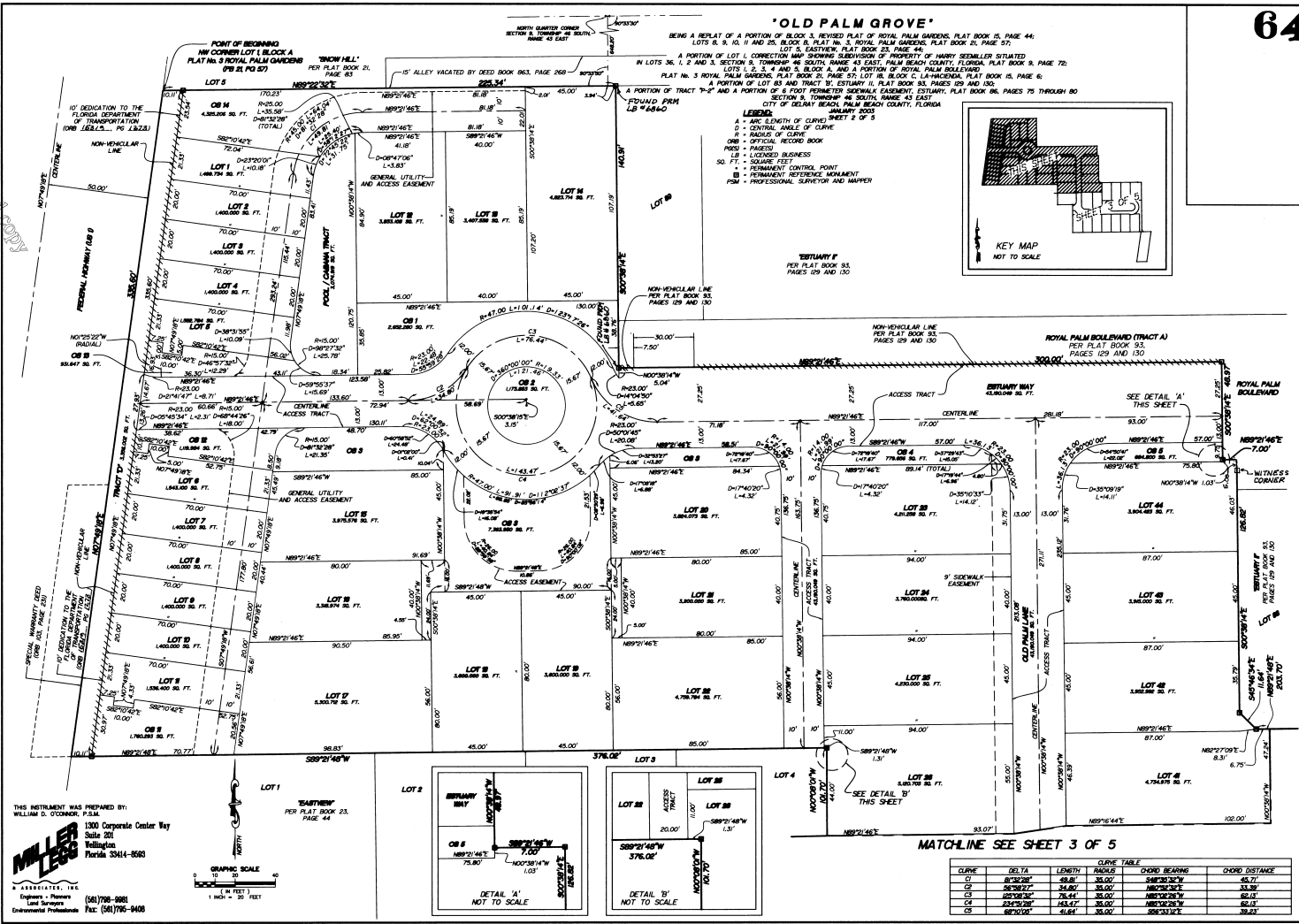


This is Not a Certified Copy

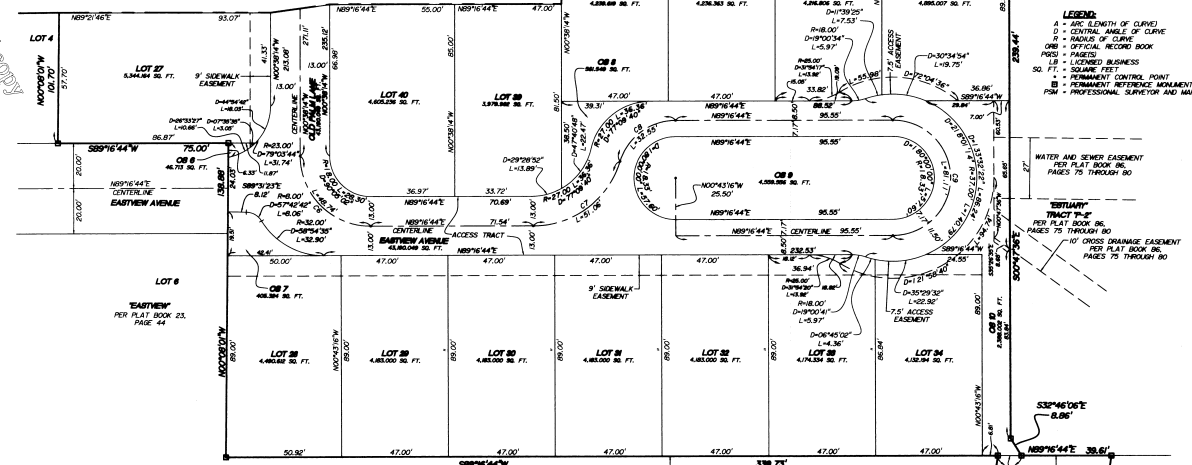


This is Not a Certified Copy

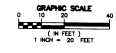
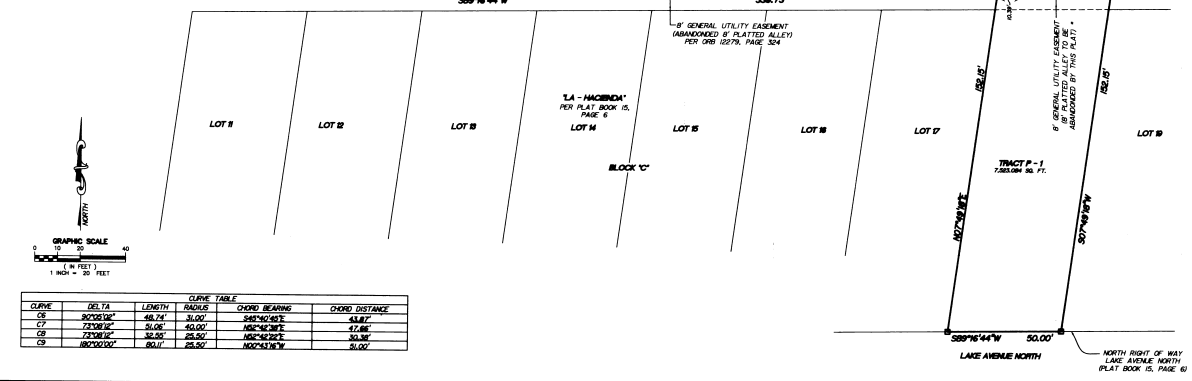
'OLD PALM GROVE'

BEING A REPLAT OF A PORTION OF BLOCK 3, REVISED PLAT OF ROYAL PALM GARDENS, PLAT BOOK 15, PAGE 44;
 LOTS 8, 9, 10, 11 AND 25, BLOCK 8, PLAT NO. 3, ROYAL PALM GARDENS, PLAT BOOK 21, PAGE 57;
 LOT 6, EASTVIEW, PLAT BOOK 23, PAGE 44;
 A PORTION OF LOT 1, CONNECTION MAP SHOWING SUBDIVISION OF PROPERTY OF HARRY REISZELLER SITUATED
 IN LOTS 36, 1, 2 AND 3, SECTION 8, TOWNSHIP 46 SOUTH, RANGE 43 EAST, PALM BEACH COUNTY, FLORIDA, PLAT BOOK 9, PAGE 72;
 LOTS 1, 2, 3, 4 AND 5, BLOCK A, AND A PORTION OF ROYAL PALM BOULEVARD,
 PLAT NO. 3 ROYAL PALM GARDENS, PLAT BOOK 20, PAGE 57; LOT 66, BLOCK C, LA-MACOMEN, PLAT BOOK 15, PAGE 6;
 A PORTION OF LOT 83 AND TRACT 9, ESTUARY II, PLAT BOOK 83, PAGES 29 AND 103;
 A PORTION OF TRACT 70-F AND A PORTION OF 6' DRAINAGE SEWERAL EASEMENT, ESTUARY, PLAT BOOK 86, PAGES 75 THROUGH 80
 SECTION 9, TOWNSHIP 46 SOUTH, RANGE 43 EAST,
 CITY OF DELRAY BEACH, PALM BEACH COUNTY, FLORIDA
 JANUARY 2003
 SHEET 3 OF 5

MATCHLINE SEE SHEET 2 OF 5

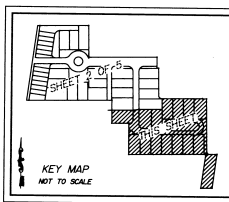


- LEGEND:**
- A - ARC LENGTH OF CURVE
 - CA - CENTRAL ANGLE OF CURVE
 - R - RADIUS OF CURVE
 - OR - OFFICIAL RECORD BOOK
 - PGS - PAGES
 - LB - LICENSED BUSINESS
 - 50 - SQUARE FEET
 - CP - PERMANENT CONTROL POINT
 - PM - PERMANENT REFERENCE MONUMENT
 - PSM - PROFESSIONAL SURVEYOR AND MAPPER



CURVE	DELTA	CURVE TABLE		CHORD BEARING	CHORD DISTANCE
		LENGTH	RADIUS		
C8	$NS09^{\circ}16'44''E$	48.74	81.00	$S49^{\circ}10'25''E$	41.87
C7	$NS09^{\circ}16'44''E$	51.06	84.00	$NS^{\circ}04'38''E$	47.86
C6	$NS09^{\circ}16'44''E$	52.87	85.50	$NS^{\circ}04'38''E$	50.86
C9	$NS09^{\circ}16'44''E$	50.11	82.50	$NS02^{\circ}43'16''W$	51.00

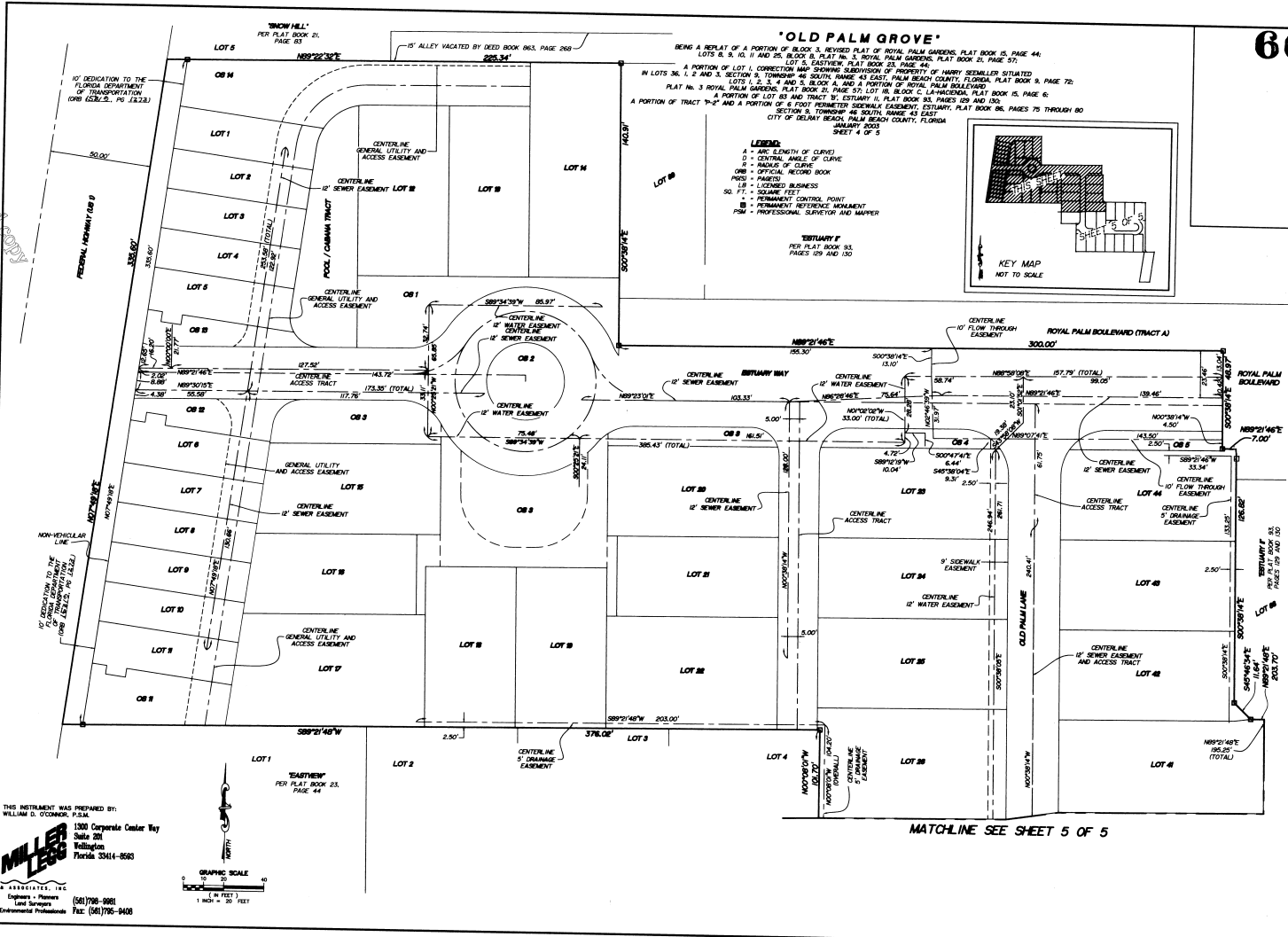
* NOTE: 8' PLATTED ALLEY SHOWN AS PART OF TRACT P-1 IS OWNED BY THE CITY OF DELRAY BEACH AND IS BEING ABANDONED BY THIS PLAT.



THIS INSTRUMENT WAS PREPARED BY:
 WILLIAM D. O'CONNOR, P.E.S.M.
 1300 Corporate Center Way
 Suite 201
 Wellington
 Florida 33414-8580

MILLER LEE
 ENGINEERS, PLANNERS
 Environmental Professionals
 (561)798-9881
 Fax: (561)795-9408

This is Not a Certified Copy

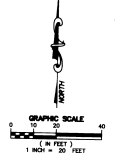


THIS INSTRUMENT WAS PREPARED BY:
WILLIAM D. O'CONNOR, P.S.M.

MILLER LEGG ASSOCIATES, INC.
1300 Corporate Center Way
Suite 200
Tallahassee, Florida 32314-8563

Engineers & Planners
Land Surveyors
Environmental Professionals

(904) 778-0981
FAX: (904) 778-9408



This is Not a Certified Copy

