

PLANT KEY

Quan.	Symbol	Botanic Name / Common Name Specification	Degree of Drought Tolerance
8	BRO	Alchmea Blancheliana / Big Red Raspberry Bromeliad 20" o.a., min. FULL	VERY
8	CAR	Crinum Asiaticum / Crinum Lily - RED 30" o.a., min. 2 plants per pot	VERY
129	CH	Calusia Rosea / Calusia Hedge 36" ht. x 24" spr., 24" o.c.	VERY
5	CO*	Quercus Virginiana / Cathedral Oaks 18' ht. x 8' spr., 8" c.t., 3" d.b.h.	VERY
28	CVR	Codiaeum Variegatum / Croton 24" ht. x 18" spr., 24" o.c., red, SMALL leaf variety	MOD.
13	DM	Duranta Repens / Goldmound 12" o.a., full, 15" o.c.	VERY
8	DWF	Wodyetia Bifurcata / Foxtail Palm 12' -16' C.T. ht., double trunk, stagger hts. in group	VERY
231	GIF	Ficus "Green Island" / Green Ficus 18" ht. x 12" spr., 24" o.c.	VERY
2	JFT	Filicium Decipiens / Japanese Fern Tree 16" ht. x 7" spr., 8" C.T.	MOD.
628	LM	Liriope Muscari "Evergreen Giant" / Lilyturf 12" o.a., full, 15" o.c.	VERY
10	OG*	Cordia Sebestena / Orange Geiger 16" ht. x 7" spr., 8" C.T.	VERY
85	PO	Podocarpus Gracillior / Fern Podocarpus 4" ht. 24" O.C., FULL	MOD.
37	SA	Schefflera Arboricola "Trinette" / Dwarf Schefflera 18" ht. x 12" spr., 24" o.c.	-
-	SOD	Stenotaphrum Secundatum / St. Augustine Grass Floratam or Palmetto solid sod	-
10	TE	Eugenia Topiary / Topiary 6' ht. 24" O.C., FULL SPIRAL SHAPE	MOD.
14	VM	Veitchia Modanielsii / Sunshine Palm c.t. ht. as noted on plans, 20' O.A. MIN.	VERY
1	VMD	Veitchia Modanielsii / Sunshine Palm (DOUBLE) c.t. ht. as noted on plans, 20' O.A. MIN.	VERY
2	ZP	Phoenix Dactylifera / Zahidi Date Palm Clear trunk ht. as noted on plan, 17' O.A.	VERY

Drought tolerance is per "SFVMD Xeriscape Plant Guide"

* = Native to Florida

Abbreviations:
 c.t. - clear trunk
 d.h. - diameter at breast height
 h.t. - height
 o.a. - overall
 o.c. - on-center spacing
 spr. - spread

EXISTING PLANT MATERIAL
 SEE SURVEY AND TP-1 FOR LOCATIONS
 AND MITIGATION / DISPOSITION

* Hedges must be allowed to attain height of 36 inches except where providing adequate and safe sight distance requires them to be maintained at a 30-inch height.

Landscape Tabulations

OFF STREET PARKING AREA CALCULATIONS
 TOTAL 2,805 SQ.FT.
 HARDSCAPE TOTAL 1,955 SQ.FT.
 LANDSCAPE REQUIRED 562 SQ.FT.
 LANDSCAPE PROVIDED 850 SQ.FT.

AREA	PROVIDED
FRONT FACADE LANDSCAPE TOTAL = 960 SQ.FT.	60 SHRUBS 10 ACCENT TREES
FRONT FOUNDATION LANDSCAPE AREA = 430 SQ.FT.	2 CANOPY TREES 4 Palms 2 LARGE Palms 65 SHRUBS 163 GROUND COVER
FRONT SETBACK LANDSCAPE AREA = 530 SQ.FT.	Canopy Trees 5 Palms 6 (2) SOLID HEDGE
NORTH BUFFER LANDSCAPE BARRIER AREA = 490 SQ.FT.	Canopy Trees 5 Palms 6 (2) SOLID HEDGE
SOUTH BUFFER LANDSCAPE BARRIER AREA = 525 SQ.FT.	Canopy Trees 5 Palms 6 (2) SOLID HEDGE



REVISIONS	DATE	BY
REVISOR COMMENTS, ONLINE MEETING	06/30/24	GAH
REVISOR COMMENTS, APRIL 18, 2024	05/09/24	GAH

CAULFIELD & WHEELER, INC.
 CIVIL ENGINEERING
 LANDSCAPE ARCHITECTURE - SURVEYING
 7500 GLADES ROAD - SUITE 100
 BOCA RATON, FLORIDA 33434
 PHONE (561) 392-1991 / FAX (561) 750-1452

5TH AVENUE TOWNHOMES
 DELRAY BEACH, FLORIDA 33483

FLORIDA

LANDSCAPE PLAN

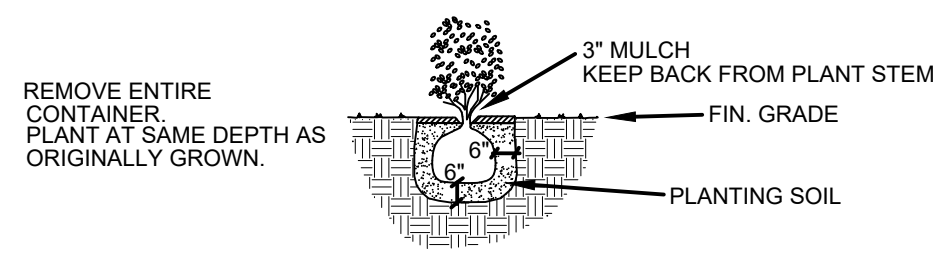
DELRAY BEACH

DATE	10/22/23
DRAWN BY	GAH
F.B. / PG.	--
SCALE	1"=10'

SUBMITTED BY:
 G. ALLAN HENDRICKS
 LANDSCAPE ARCHITECT
 No. LA666974
 STATE OF FLORIDA
 -FOR THE FIRM-
 DATE

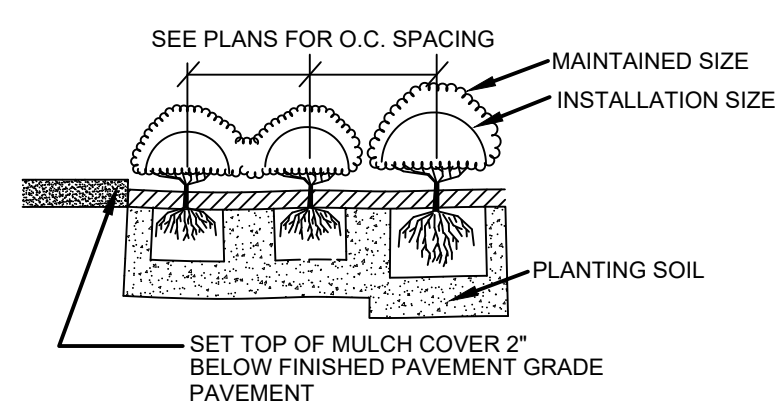
JOB # 10577
 SH.T. NO.
LP-1
 OF 2 SHEETS

NOTE:
INSTALL PLANTS WITH ADEQUATE SETBACK TO ALLOW FOR MATURE GROWTH WITHOUT INTERFERENCE BETWEEN PLANT GROWTH TYPES, AND WITHOUT OVERLAPPING PAVEMENT, STRUCTURES, ETC.

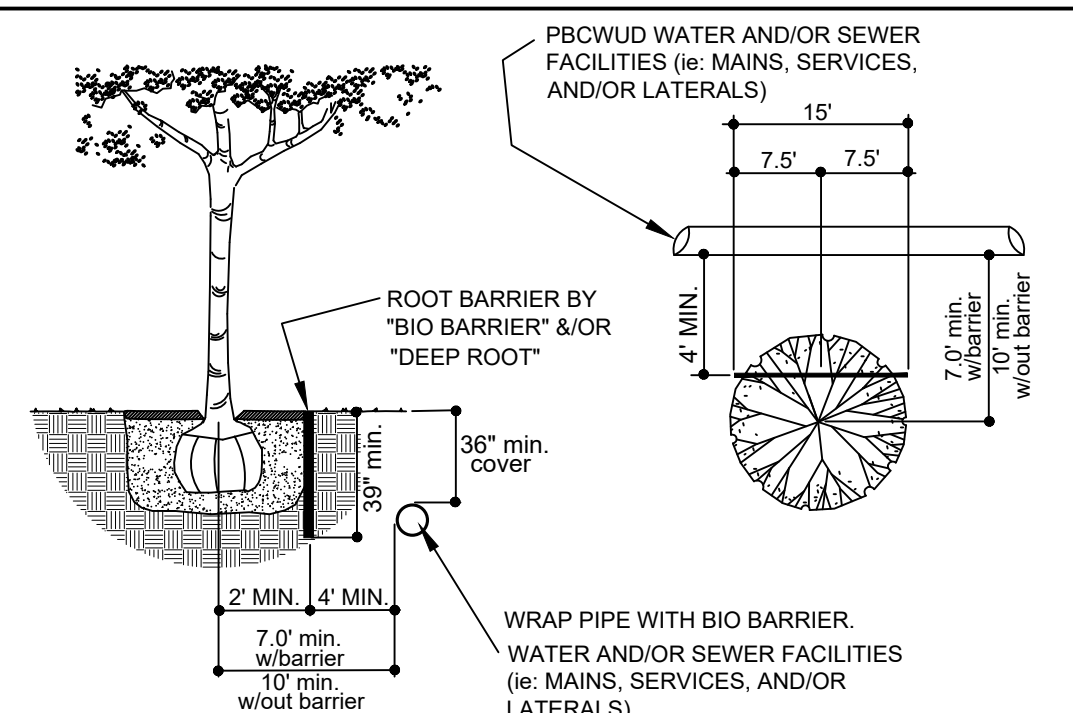


SHRUB PLANTING DETAIL
NOT TO SCALE

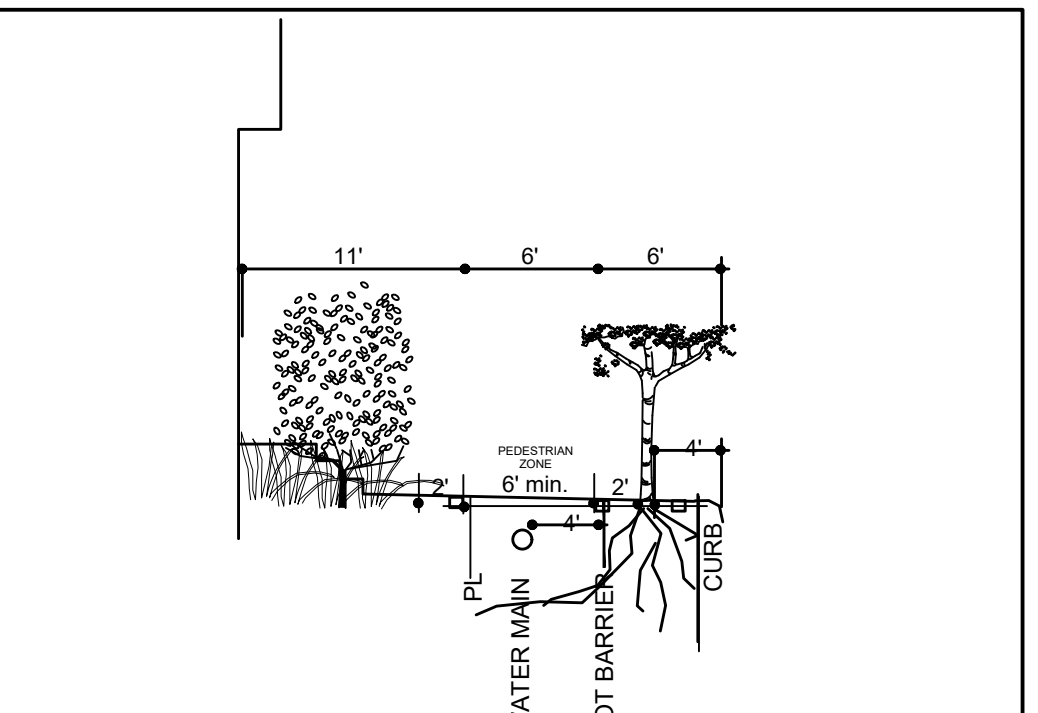
NOTES
1. INSTALL PLANTS WITH ADEQUATE SETBACK TO INSURE GROWTH WITHOUT INTERFERENCE BETWEEN PLANT GROWTH TYPES, AND WITHOUT OVERLAPPING PAVEMENT, STRUCTURES, ETC.
2. INSTALL PLANTS IN SHRUB MASSES USING TRIANGULAR SPACING UNLESS OTHERWISE NOTED.



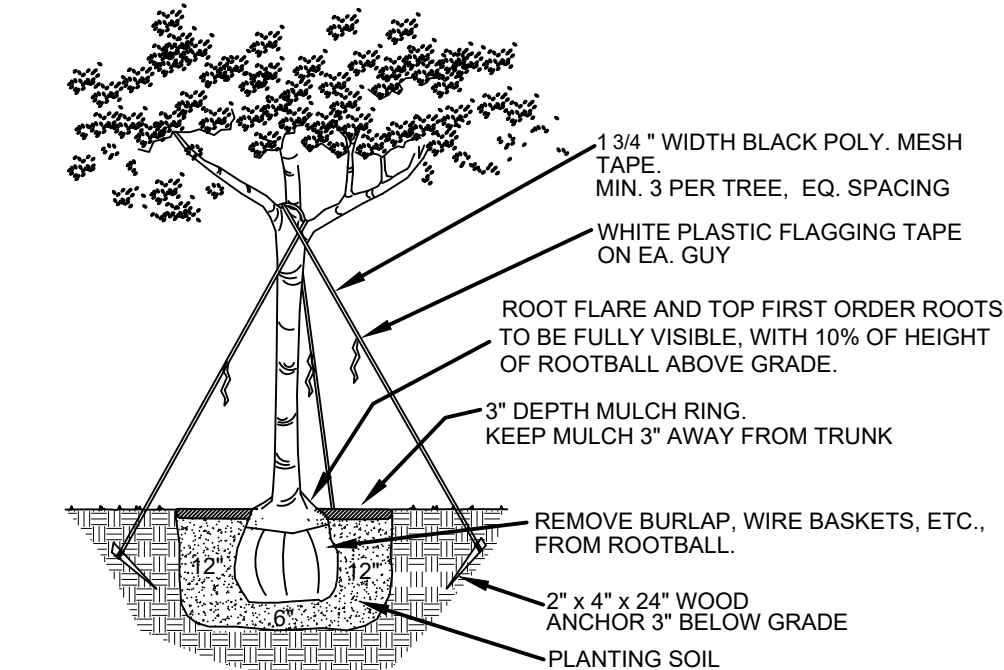
SHRUB SPACING
NOT TO SCALE



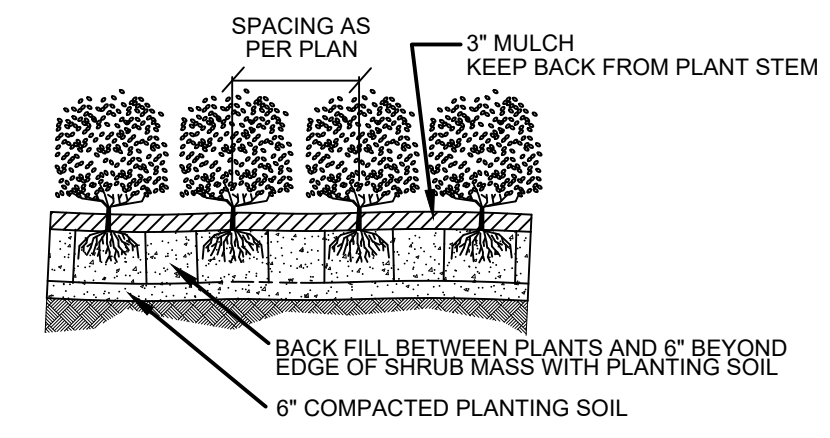
ROOT BARRIER DETAIL
NOT TO SCALE



SIDEWALK SECTION
NOT TO SCALE

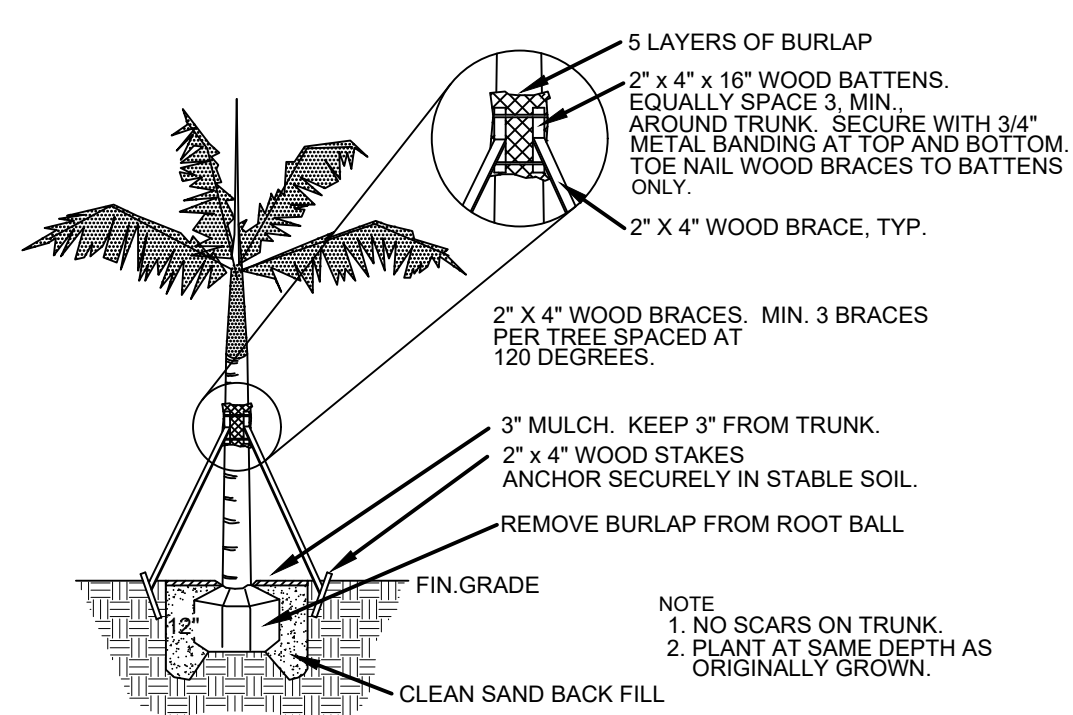


TREE PLANTING DETAIL
NOTE: MULTI-TRUNK TREE PLANTING SIMILAR N.T.S.



NOTE
PLANT AT SAME DEPTH AS ORIGINALLY GROWN

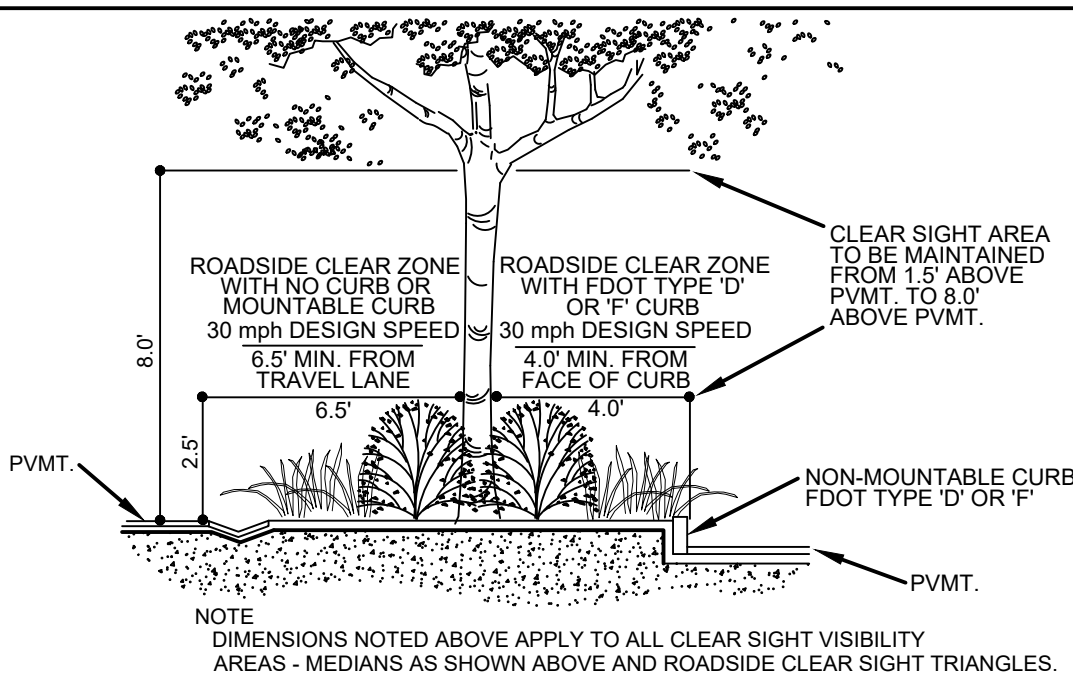
SHRUB MASS PLANTING
NOT TO SCALE



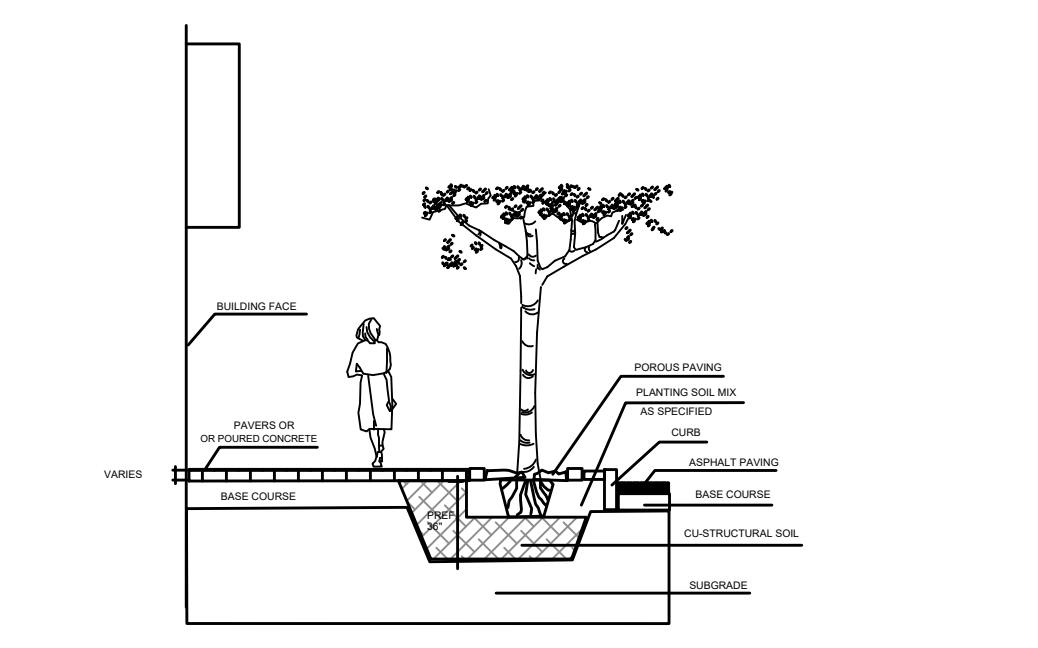
DATE PALM PLANTING DETAIL
NOT TO SCALE

Landscape & Root Barrier Note

- Trees shown on this plan are for graphic representation only. Tree spacing is based on design requirements and the trees shown on these plans attempt to accomplish that spacing while maintaining the required setbacks from utilities. Trees may be field adjusted to avoid conflicts with driveways and underground utilities. In any case the trees shall be located in the field in accordance with the planting details shown hereon.
- Additionally, trees are to be installed with a ten foot (10') separation from any water or sewer main and/or service, hydrants, and lift stations. If a ten foot (10') separation cannot be achieved, the tree can be installed with a root barrier system. Refer to the "Root Barrier Detail" for installation requirements.

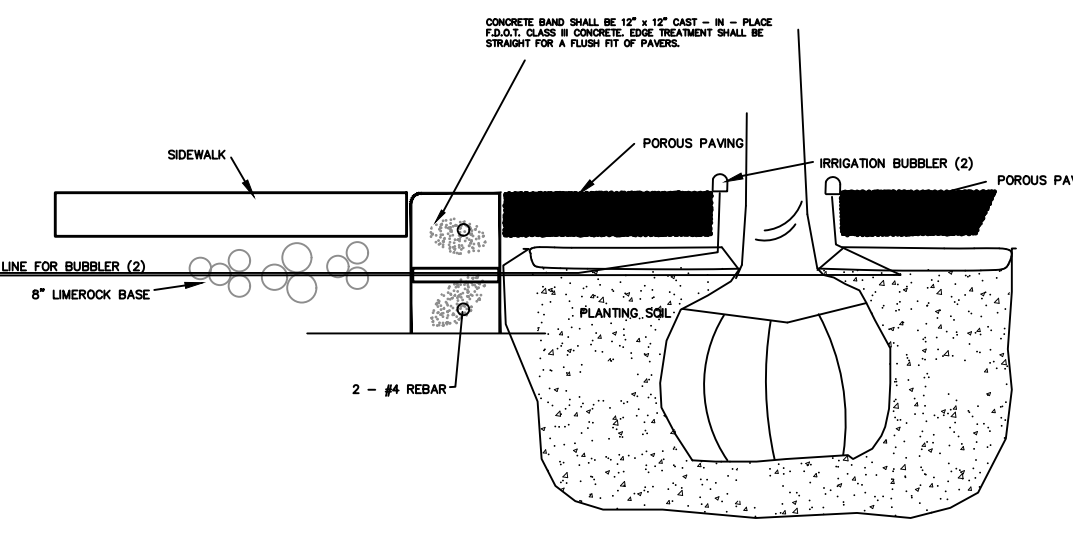


SECTION CLEAR SIGHT AREA WITHIN THE SAFE SIGHT DISTANCE TRIANGLE & ROADSIDE CLEAR ZONE
NOT TO SCALE

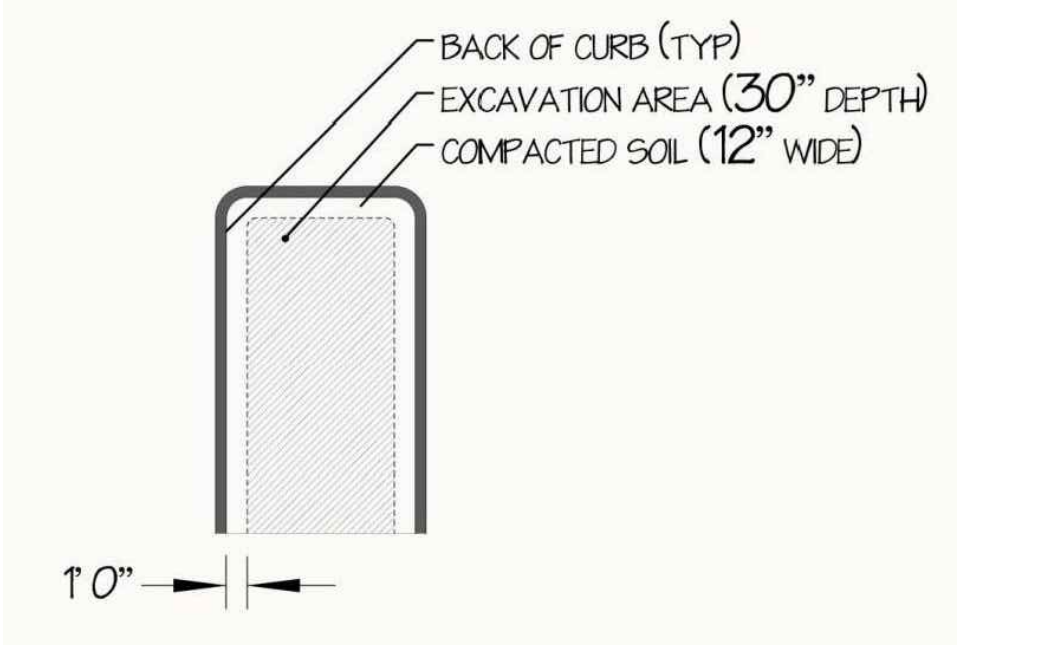


CROSS SECTION OF TYPICAL TREE INSTALLATION INTO CU- STRUCTURAL SOIL. NOTE: WHERE THE TREE PIT IS OPEN, TOPSOIL SHOULD BE PLACED AROUND THE TREE BALL. CU- STRUCTURAL SOIL SHOULD BE PLACED UNDER THE BALL TO PREVENT BALL SUBSIDENCE.

STRUCTURAL SOIL DETAIL
N.T.S.



STREET TREE PLANTING DETAIL
BRACE TREES WITH WOOD, PAINTED FOREST GREEN. N.T.S.



EXCAVATION DETAIL
N.T.S.

Porous Paving System
DESCRIPTION:
Cold applied, poured in place tree grate system that when hardened becomes a walkable surface that is porous up to a minimum of two gallons per second. Below are the standards required.
Cold applied, porous paving system designed to bind a selection of decorative aggregates, which provide a bonded, attractive and porous surface for tree pit. (ADDAPAVE TP or equivalent)
Resin-bonded porous surfacing consists of aggregate, fully coated with two-part chemically curing, UV stable, flexible, crystal clear resin, hand finished by trowel. (ADDAPAVE TP or equivalent). No loose stones are acceptable. Resin must be crystal-clear in nature.
SURFACE PREPARATION:
Areas to be filled with the ADDAPAVE TP or equivalent system should be clean and dry with a minimum infill depth available of 6 inches. City of Fort Lauderdale designee must approve exceptions.
Excavated area to receive the system must be properly compacted.
Specially designed fabric with slow release capsules of non-penetrating weed control material shall be installed, as the first thing to go into excavated tree pit. This will prevent fine dirt particles from migrating to the surface, prevent weed growth and help deflect root growth away from the ADDAPAVE TP or equivalent.
Next a minimum of 4 inches of compactable sub-base material shall be placed and compacted followed by 3 inches of washed #57 or #67 aggregate should be applied to the base of the treated area to a depth of 3 inches (75mm) below the finished grade. Aggregates must be compacted to achieve a level/level finish.
Finally, ADDAPAVE TP or equivalent mixtures are added which consist of two aggregate size choices 6-10mm or 8-15mm. Each aggregate size and type must meet a specific mix design, which is dependant on the application. Mix designs take into account the final color desired and anticipated traffic / pedestrian usage.
Aggregates are double washed, dried, and bagged by weight to the specific weight required to meet the
The contents of container labeled Part B (Hardener) should be added to container labeled Part A (Resin) and thoroughly mixed together using a forced action mixer or similar for a minimum of 2 minutes. Refer to the Catalyst Guidance Table to determine the proper amount of catalyst which must be added to the combined mixture of Part A and B. Mix for an additional 1 minute after the addition of the catalyst.
The pre weighed bags of aggregate should be placed in the suitable mechanical mixer just prior to the addition of the ADDAPAVE TP or equivalent resin. The mixed ADDAPAVE TP or equivalent resin should be immediately added to the pre-mixed aggregate in a suitable mechanical mixer. Mix for 1 minute then discharge into a suitable wheelbarrow and move immediately to the point of application.
Mixing equipment shall be a pan style mortar mixer of ample size to place pre-measured aggregates and resin. Mixer shall have ample power to thoroughly blend aggregates and resin into homogenous mixture within 1 minute.
The mixture should be spread evenly across the prepared surface at the required depth. The surface should then be hand troweled using sufficient downward pressure to compact and provide for a smooth finish. Lightly broadcast clear crushed glass grit grade 300 onto the finished surface to provide increased skid resistance.
APPLICATION TEMPERATURE:
Recommended temperature of application should be between 40°F and 85°F

Maintenance Note
Any portion of a tree or palm that overhangs a travel lane shall be maintained with a min. 13'6" vertical clearance.

CU-Structural Soil
DESCRIPTION:
The structural soil material is designed as follows. The three components of the structural soil are mixed in the following proportions by weight, crushed stone: 100; clay loam: 20; hydrogel: 0.03. Total moisture at mixing should be 10% (AASHTO T-99 optimum moisture).
Crushed stone (granite or limestone) should be narrowly graded from 3/4-1 1/2 inch, highly angular with no fines. The clay loam should conform to the USDA soil classification system (gravel <5%, sand 25-30%, silt 20-40%, clay 25-40%). Organic matter should range between 2% and 5%. The hydrogel, a potassium propionate-propenamide copolymer is added in a small amount to act as a tackifier, preventing separation of the stone and soil during mixing and installation. Mixing can be done on a paved surface using front end loaders. Typically the stone is spread in a layer, the dry hydrogel is spread evenly on top and the screened moist loam is the top layer. The entire pile is turned and mixed until a uniform blend is produced. The structural soil is then installed and compacted in 6 inch lifts.
In a street tree installation of such a structural soil, the potential rooting zone could extend from building face to curb, running the entire length of the street. This would ensure an adequate volume of soil to meet the long term needs of the tree. Where this entire excavation is not feasible, a trench, running continuous and parallel to the curb, eight feet wide and three feet deep would be minimally adequate for continuous street tree planting.
There will be a need to ensure moisture recharge and free gas exchange throughout the root zone. The challenge may be met by the installation of a three dimensional geo-composite (a geo-grid wrapped in textile one inch thick by eight inches wide) which could be laid above the structural soil as spokes radiating from the trunk fair opening. This is currently in the testing stage. Other previous surface treatments could also provide additional moisture recharge, as could traditional irrigation.

Call 48 hours before you dig
It's the law!
1-800-432-4770
sunshine state one call of florida, inc.

LANDSCAPE NOTES

- ALL LANDSCAPE AND SPECIFICATIONS SHALL MEET OR EXCEED THE MINIMUM REQUIREMENTS AS PROVIDED BY CITY OF DELRAY BEACH LAND DEVELOPMENT REGULATIONS.
- ALL PLANTING MATERIAL SHALL MEET OR EXCEED FLORIDA GRADE #1 AS SPECIFIED IN GRADES AND STANDARDS FOR NURSERY PLANTS, CURRENT EDITION.
- ALL SIZES SHOWN FOR PLANT MATERIAL ON THE PLAN ARE TO BE CONSIDERED AS MINIMUMS. ALL PLANT MATERIAL MUST MEET OR EXCEED THESE MINIMUM REQUIREMENTS FOR BOTH HEIGHT AND SPREAD. ANY OTHER REQUIREMENTS FOR SPECIFIC SHAPE OR EFFECT AS NOTED ON THE PLAN WILL ALSO BE REQUIRED FOR ACCEPTANCE.
- LANDSCAPE SHALL BE PLACED TO EDGE OF ABUTTING STREETS, CANALS, LAKES OR OTHER LANDS.
- ALL MECHANICAL EQUIPMENT, AIR CONDITIONING, IRRIGATION PUMP STATIONS AND EQUIPMENT, FPL TRANSFORMERS, POOL PUMPS, ETC. MUST BE SCREENED ON THREE (3) SIDES BY LANDSCAPE SHRUBS.
NOTE: THE QUANTITY OF SCREENING SHRUBS MAY BE IN ADDITION TO THE REQUIRED NUMBER OF SHRUBS AS PROVIDED IN THE CODE CALCULATION TABLE. ALL SCREENING SHRUBS SHALL BE PLANTED FOR PROPER OPERATION OF EQUIPMENT BEING SCREENED AND/OR PER THE REQUIREMENTS OF THE UTILITY AS NECESSARY.
- GUYING/STAKING PRACTICES SHALL NOT PERMIT NAILS, SCREWS, WIRES, ETC. TO PENETRATE OUTER SURFACES OF TREES, PALMS OR OTHER PLANTED MATERIAL. TREES, PALMS AND PLANT MATERIAL WILL BE REJECTED DUE TO THIS PRACTICE.
- BURLAP MATERIAL, WIRE CAGES, PLASTIC/CANVAS STRAPS, ETC. MUST BE CUT AND REMOVED FOR THE TOP ONE-HALF (1/2) DEPTH OF THE ROOT BALL. TREES AND SHRUBS GROWN IN GROW BAGS OR GROW BAG TYPE MATERIAL MUST HAVE SUCH MATERIAL REMOVED ENTIRELY PRIOR TO PLANTING THE TREE OR SHRUB.
- ALL PLANT MATERIAL SHALL BE FREE OF PESTS, INSECTS, DISEASE, WEEDS, ETC.
- ALL PLANT MATERIAL SHALL BE PLANTED AT THE PROPER DEPTHS, AS ORIGINALLY GROWN AND/OR SO THE TOP OF THE ROOT BALL IS FLUSH OR SLIGHTLY ABOVE FINISHED GRADE IMMEDIATELY AFTER PLANTING. ALL TREES SHOULD PROVIDE TRUNK TAPER WHEN PROPERLY PLANTED AT THE CORRECT PLANTING DEPTH.
- ALL PLANT MATERIAL SHALL BE WATERED IN AT TIME OF PLANTING TO ELIMINATE AIR POCKETS IN THE ROOT ZONE AREA.
- UPON COMPLETION OF WORK, THE SITE SHALL BE CLEARED OF ALL DEBRIS, SUPERFLUOUS MATERIALS, AND EQUIPMENT CAUSED BY THIS PERMIT.
- ALL LANDSCAPED AREAS SHALL BE PROVIDED WITH AN UNDERGROUND FULLY AUTOMATIC IRRIGATION SYSTEM USING POP-UP SPRINKLERS. SYSTEM SHALL PROVIDE 100% COVERAGE WITH A 50% OVERLAP (MINIMUM) USING RUST-FREE WATER, EXCEPT ANY PRESERVED AREAS REMAINING IN NATURAL STATE. A RAIN SENSOR DEVICE OR SWITCH SHALL BE INSTALLED THAT WILL OVERRIDE THE IRRIGATION SYSTEM WHEN ADEQUATE RAINFALL HAS OCCURRED. WATER SHALL NOT BE DIRECTED AND/OR PROVIDED ONTO IMPERVIOUS SURFACES AND/OR BE DESIGNED OR INSTALLED TO THROW WATER OVER AN IMPERVIOUS SURFACE SUCH AS A SIDEWALK, ETC. HOURS OF OPERATION FOR ALL IRRIGATION SYSTEMS SHALL BE LIMITED TO 5:00 P.M. TO 8:00 A.M. ONLY OR AS MAY BE FURTHER RESTRICTED BY SOUTH FLORIDA WATER MANAGEMENT DISTRICT OR OTHER JURISDICTIONAL AGENCY.
- ALL PLANT MATERIAL AND WORK SHALL BE GUARANTEED FOR ONE-YEAR FROM FULLY EXECUTED SUBSTANTIAL COMPLETION CERTIFICATE. DURING THE ONE YEAR GUARANTEE, ANY PLANT MATERIAL THAT DIES OR IS IN AN UNHEALTHY CONDITION SHALL BE REPLACED WITH THE SAME PLANT TYPE AT LEAST EQUAL TO THE SIZE AND QUALITY ORIGINALLY SPECIFIED. THE REPLACEMENT MATERIAL SHALL ALSO BE GUARANTEED FOR ONE YEAR FROM THE DATE OF ITS INSTALLATION. THE GUARANTEE WILL BE NULL AND VOID IF PLANT MATERIAL IS DAMAGED OR KILLED BY LIGHTNING, HURRICANE FORCE WINDS, HAIL OR FREEZE.
- THE LANDSCAPE CONTRACTOR IS RESPONSIBLE FOR VERIFYING THERE ARE NO CONFLICTS WITH ABOVE OR BELOW GROUND UTILITIES PRIOR TO COMMENCING LANDSCAPE INSTALLATION. NOTIFY OWNER IF CONFLICTS EXIST.
- ANY TREES TO REMAIN SHALL BE PRUNED IN SUCH A WAY TO PROMOTE PROPER HORTICULTURAL AND NATURAL TREE GROWTH.
- ALL TREES AND PALMS SHALL BE PLACED A MINIMUM OF 5' FROM UNDERGROUND UTILITIES.
- GROUND COVERS SHALL BE SPACED AS NOTED OR TO INSURE GROUND COVER WITHIN 6 MONTHS OF PLANTING.
- ALL EXISTING PLANTING BED SOILS SHALL BE REPLACED TO A DEPTH OF 30 INCHES.
- MULCH SHALL BE EUCALYPTUS OR MELALEUCA MULCH. ALL TREES ARE TO HAVE A 30" RING COVERED WITH A 3" LAYER OF COMPACTED MULCH. ALL SHRUB BEDS WITH A 3" LAYER OF COMPACTED MULCH.
- ALL PLANT MATERIAL SHALL BE FERTILIZED WITH A TABLET FORM BALANCED FERTILIZER CONTAINING MINOR ELEMENTS. FOLLOW MANUFACTURER'S RECOMMENDATIONS FOR RATES. SOD AREAS SHALL BE FERTILIZED WITH A GRANULAR FORM BALANCED FERTILIZER WITH MINOR ELEMENTS FOLLOWING MANUFACTURER'S RECOMMENDATIONS FOR RATES.
- PLANTING SOIL SHALL BE A MIX OF 1/3 NATIVE SOIL, 1/3 CLEAN SAND & 1/3 PEAT. IF NATIVE SOIL IS UNACCEPTABLE, CONTACT LANDSCAPE ARCHITECT.
- ALL LANDSCAPING SHALL BE INSTALLED IN A WORKMANLIKE MANNER, AND ACCORDING TO ACCEPTED GOOD PLANTING PROCEDURES WITH QUALITY PLANT MATERIALS AS HEREIN DESCRIBED.
- ALL PROHIBITED PLANT SPECIES SHALL BE REMOVED FROM THE SITE.
- ALL LANDSCAPE AREAS TO BE TREATED WITH PRE EMERGENT WEED CONTROL PRIOR TO MULCH INSTALLATION. ADDITIONAL WEED CONTROL SHALL BE THE RESPONSIBILITY OF THE LANDSCAPE CONTRACTOR UNTIL FINAL SIGN OFF BY THE CITY OF DELRAY BEACH.

REVISIONS	DATE	BY

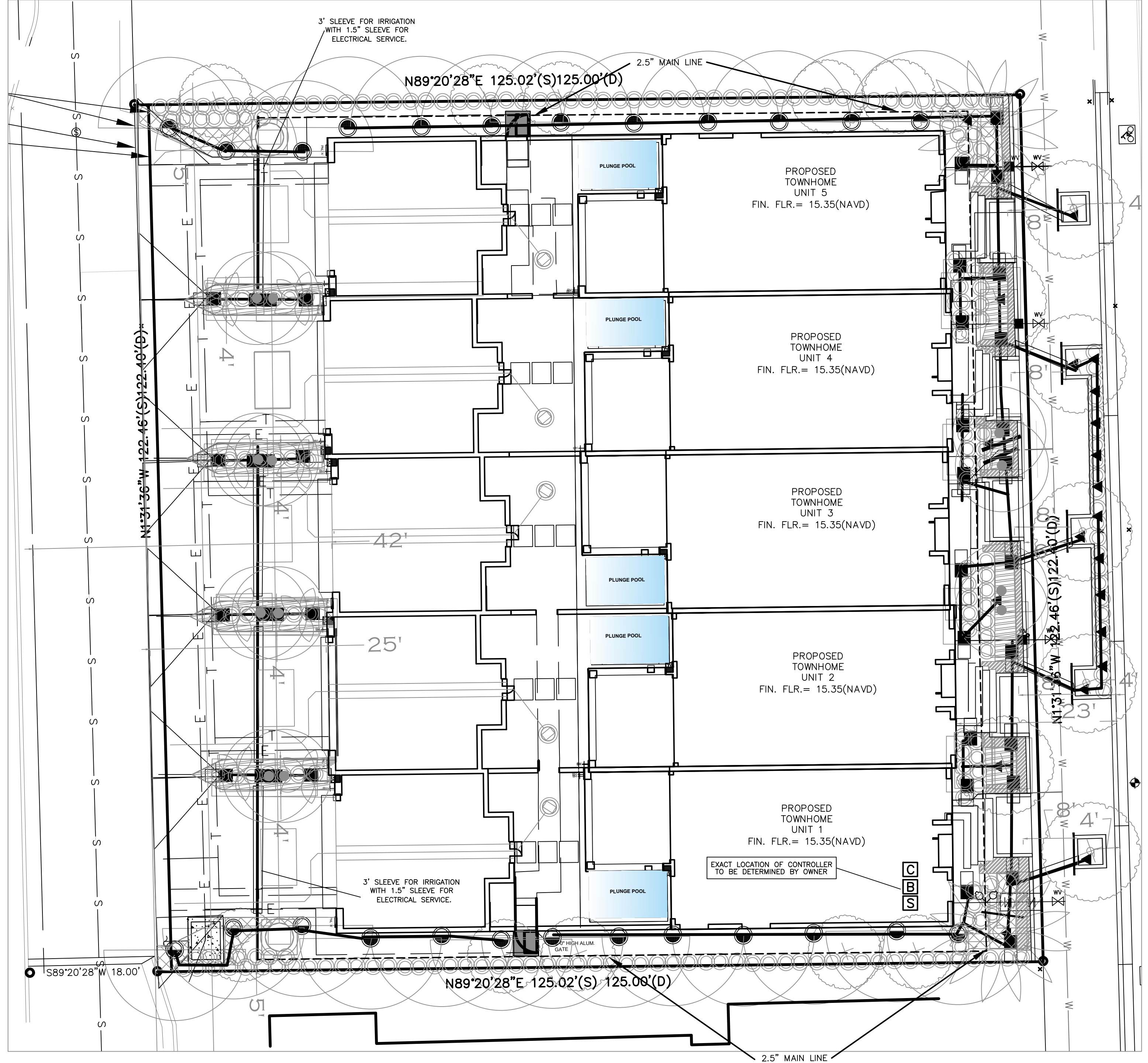
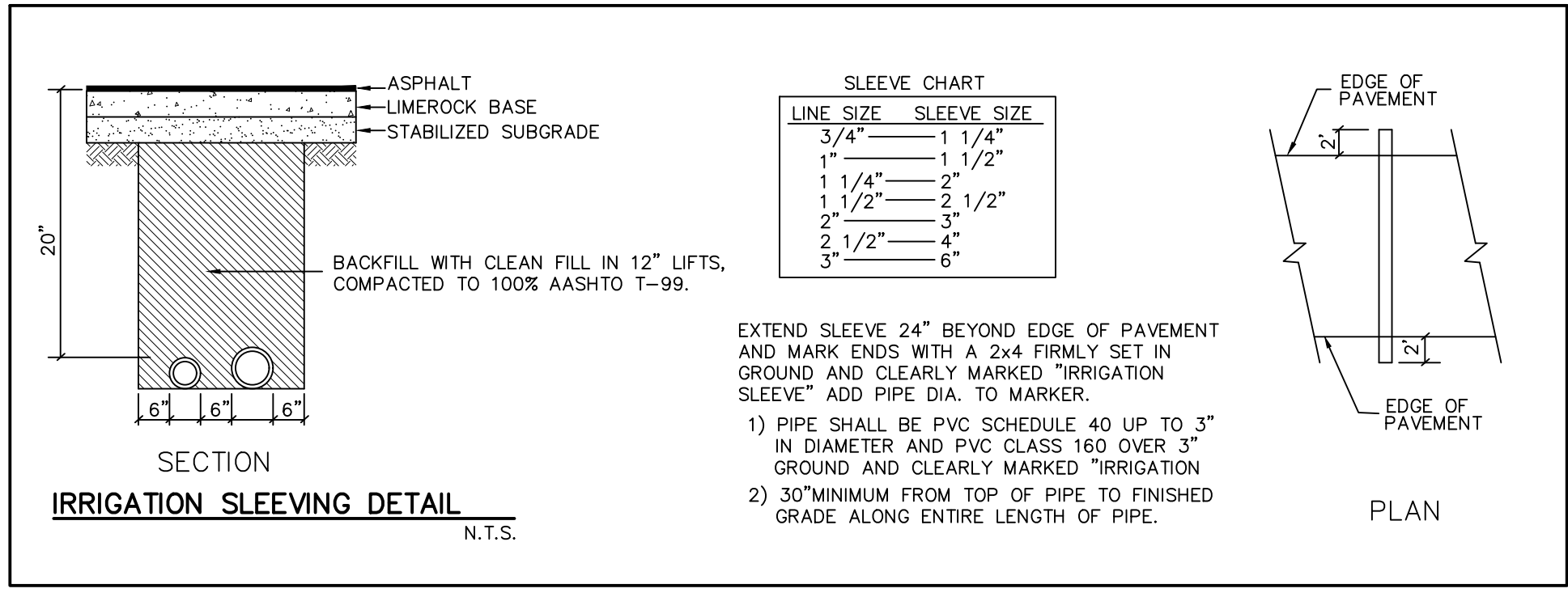
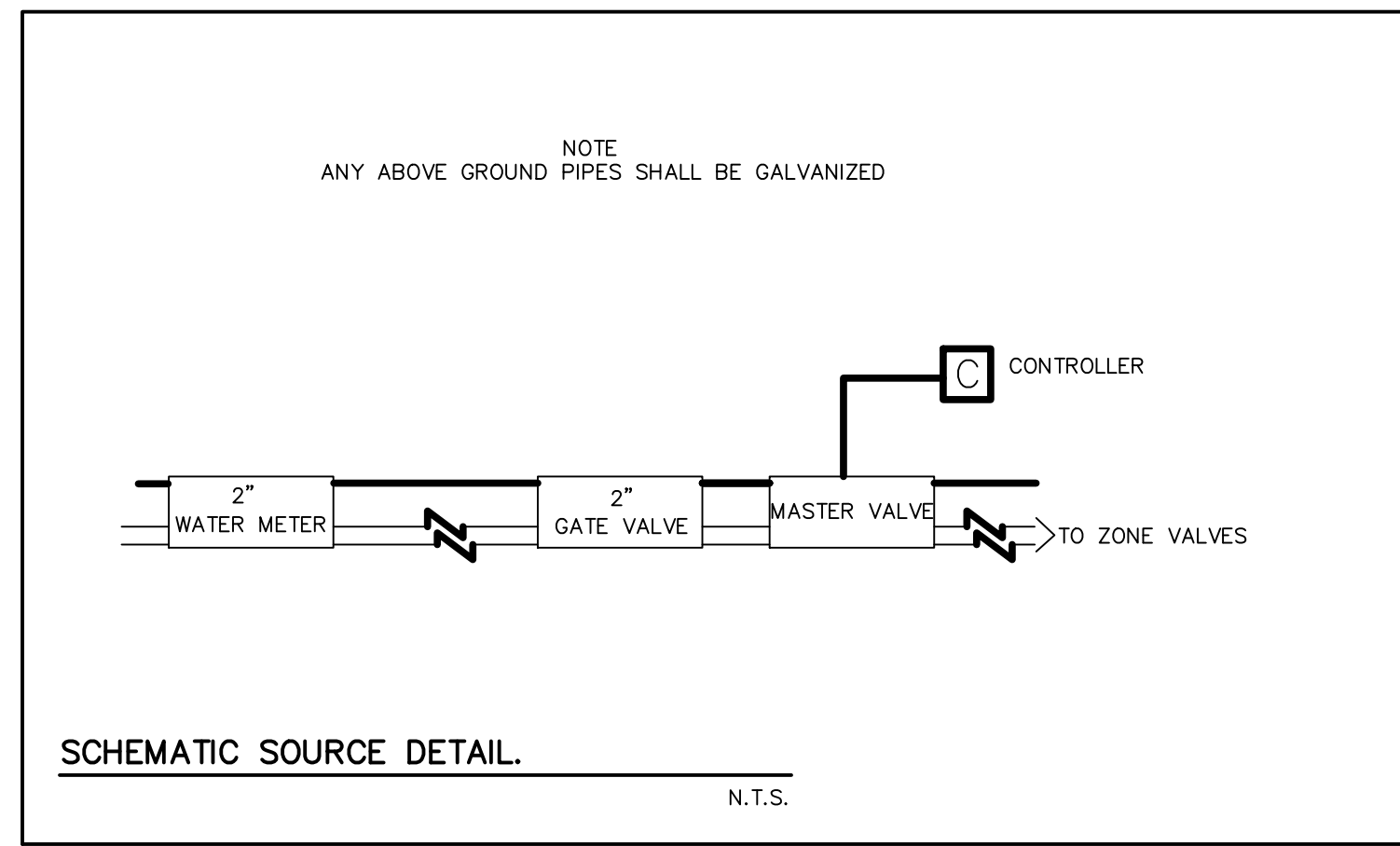
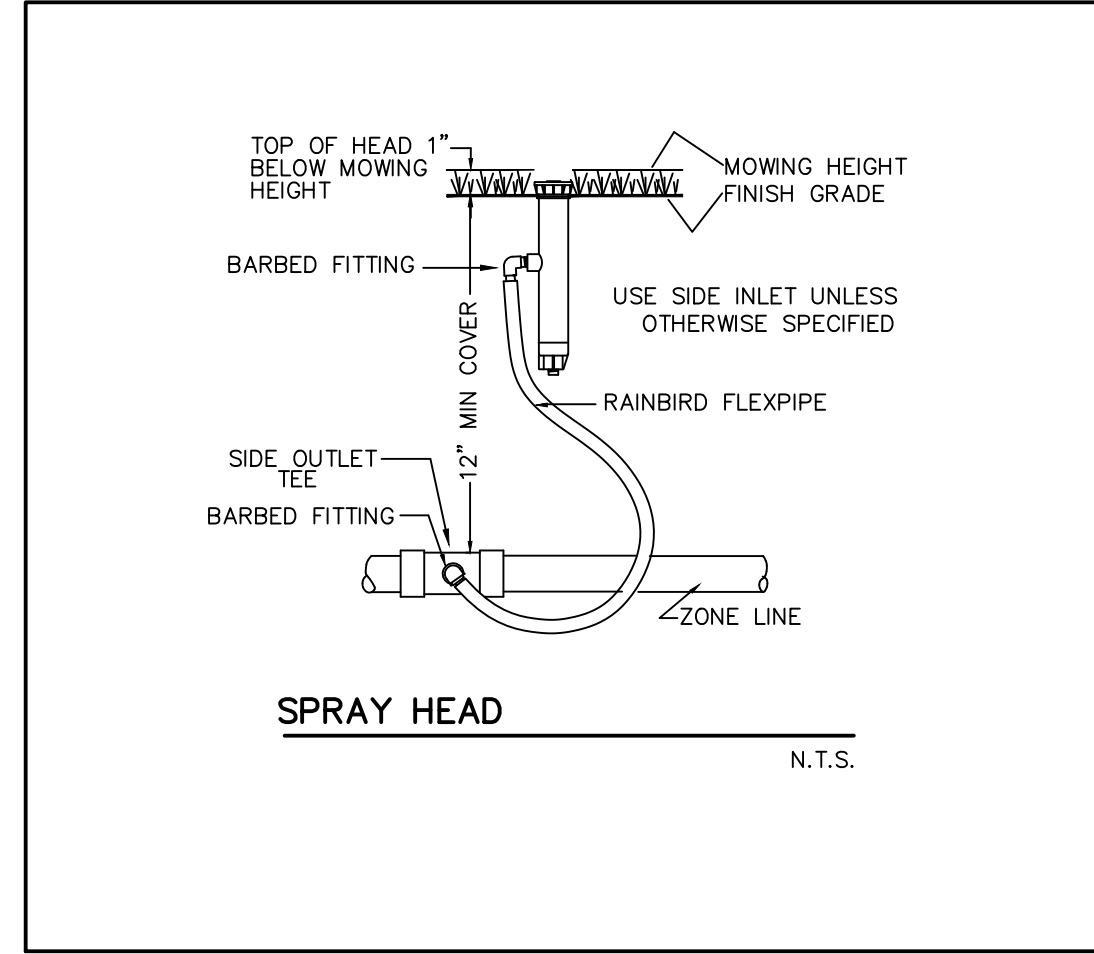
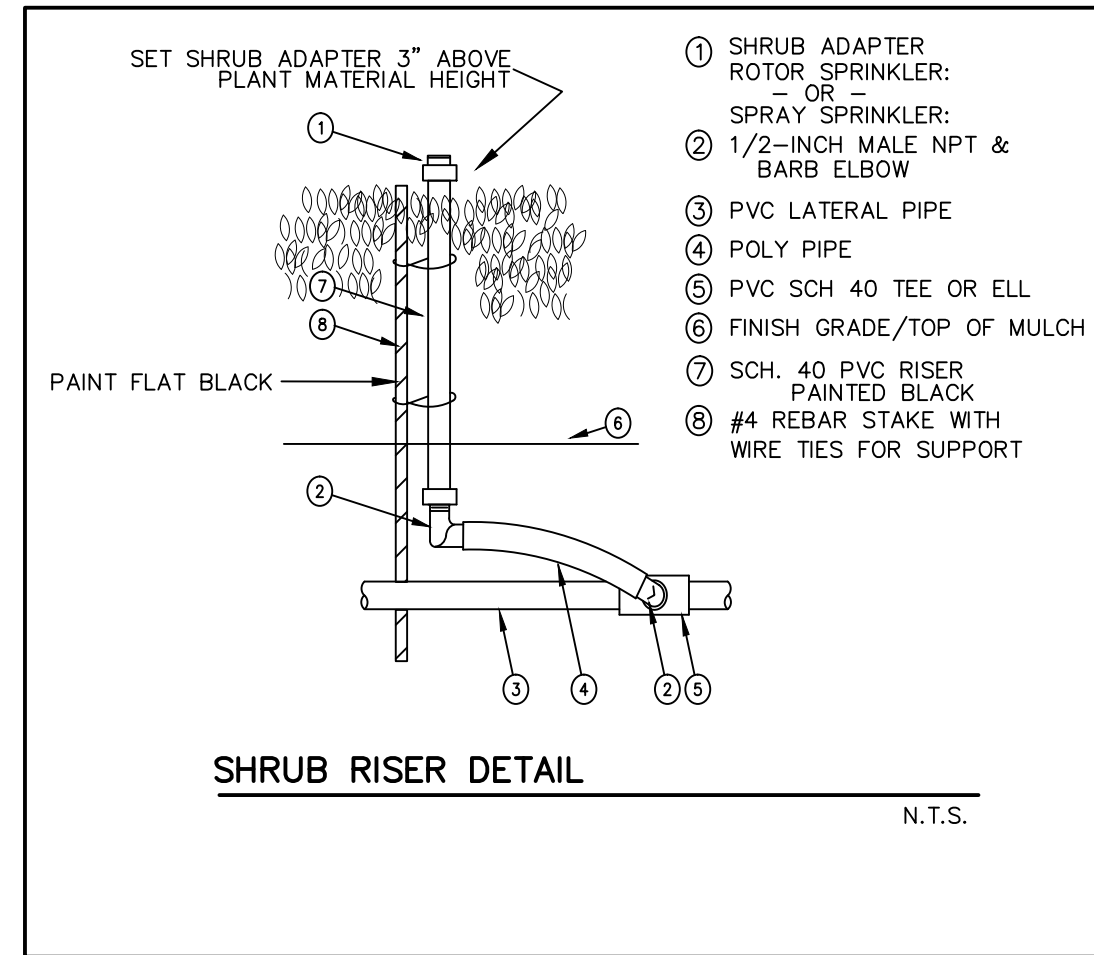
CAULFIELD & WHEELER, INC.
CIVIL ENGINEERING
LANDSCAPE ARCHITECTURE - SURVEYING
7600 GLADES ROAD - SUITE 100
BOCA RATON, FLORIDA 33434
PHONE (561) 382-1981 / FAX (561) 750-1452

5TH AVENUE TOWNHOMES
DELRAY BEACH, FLORIDA 33483
LANDSCAPE DETAILS
DELRAY BEACH FLORIDA

DATE	10/23/23
DRAWN BY	GAH
F.B./ PG.	--
SCALE	NA

SUBMITTED BY:
G. ALLAN HENDRICKS
LANDSCAPE ARCHITECT
No. LA666974
STATE OF FLORIDA
-FOR THE FIRM-
DATE

JOB # 10577
SHT. NO.
LP-2
OF 2 SHEETS



ZONE LINE / SLEEVE SIZING CHART

GALLONS/MINUTE	PIPE SIZE	SLEEVE SIZE
TO 10	3/4"	1 1/4"
11-16	1"	1 1/2"
17-26	1 1/4"	2"
27-35	1 1/2"	2 1/2"
36-55	2"	3"

*NOTE: ALL FIGURES ABOVE ARE RELATED TO SCHEDULE 40 IPS PURPLE PLASTIC PIPE, AND A MAXIMUM VELOCITY OF 5 FEET PER SECOND.

VALVE / ZONE SCHEDULE

VALVE	ZONE TYPE	APPROX. GPM
1	SPRAY	35
2	SPRAY	32
3	SPRAY	37
4	SPRAY	32
5	SPRAY	39

IRRIGATION KEY

MARK	ARC*	SPRAY HEAD / STANDARD TRAJECTORY*	PSI	GPM
▲	F	RAINBIRD 5F-B BUBBLER	25	1.5
●	Q	RAINBIRD 15 SERIES MPR	25	0.82
●	H	RAINBIRD 15 SERIES MPR	25	1.65
●	TQ	RAINBIRD 15 SERIES MPR	25	2.48
●	F	RAINBIRD 15 SERIES MPR	25	3.30
▬	F	RAINBIRD 15 SERIES END STRIP	25	0.56
☐	F	RAINBIRD 15 SERIES SIDE STRIP	25	1.11

- ☐ RAINBIRD RC-C 6 STATION ELECTRO MECHANICAL CONTROLLER COORDINATE LOCATION WITH CONTRACTOR
- SHOWN FOR CLARITY, ALL ZONE VALVES LOCATED AT CONTROLLER
- ☐ ADD RAINBIRD MODEL RSD-BEX RAIN SHUT-OFF DEVICE
- ☐ ADD Febco 765 PVB Backflow Preventer FPT | FE765-200 OR LIKE KIND.

- *NOTES**
1. THE IRRIGATION PLAN IS SCHEMATIC. IRRIGATION CONTRACTOR SHALL PROVIDE 100% COVERAGE WITH A MIN. 75% OVERLAP. HEADS SHALL BE PLACED TO MINIMIZE OVERSPRAY ON BUILDINGS AND PAVEMENT.
 2. SOME ADJUSTMENT TO THE SPRAY HEADS NOTED ABOVE MAY BE REQUIRED.
 3. SPRAY HEADS IN SHRUB AREAS THAT ARE ADJACENT TO WALKS SHALL BE RAINBIRD 15 SERIES 12" POP-UPS.
 4. SPRAY HEADS IN OTHER SHRUB AREAS SHALL BE ON A RISER WITH SHRUB ADAPTER AS NOTED IN THE DETAIL BELOW.
 5. SPRAY HEADS IN GRASS AREAS SHALL BE RAINBIRD 15 SERIES 6" POP-UPS.

REVISIONS	DATE	BY

REVISED PER SITE PLAN ADJUSTMENTS
FILE NAME: 9992LAND

CAULFIELD & WHEELER, INC.
CIVIL ENGINEERING
LANDSCAPE ARCHITECTURE - SURVEYING
7600 GLADES ROAD - SUITE 100
BOCA RATON, FLORIDA 33434
PHONE (561) 382-1891 / FAX (561) 750-1452

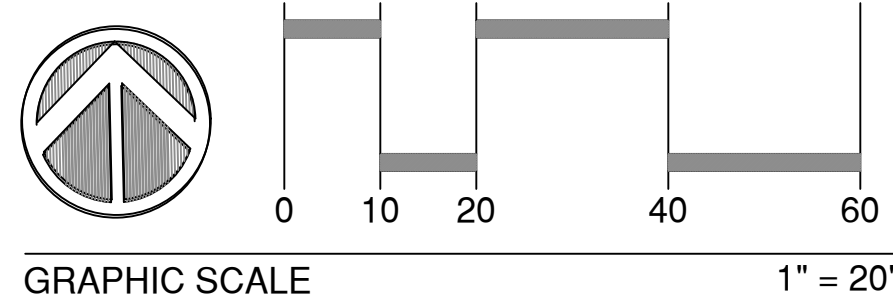
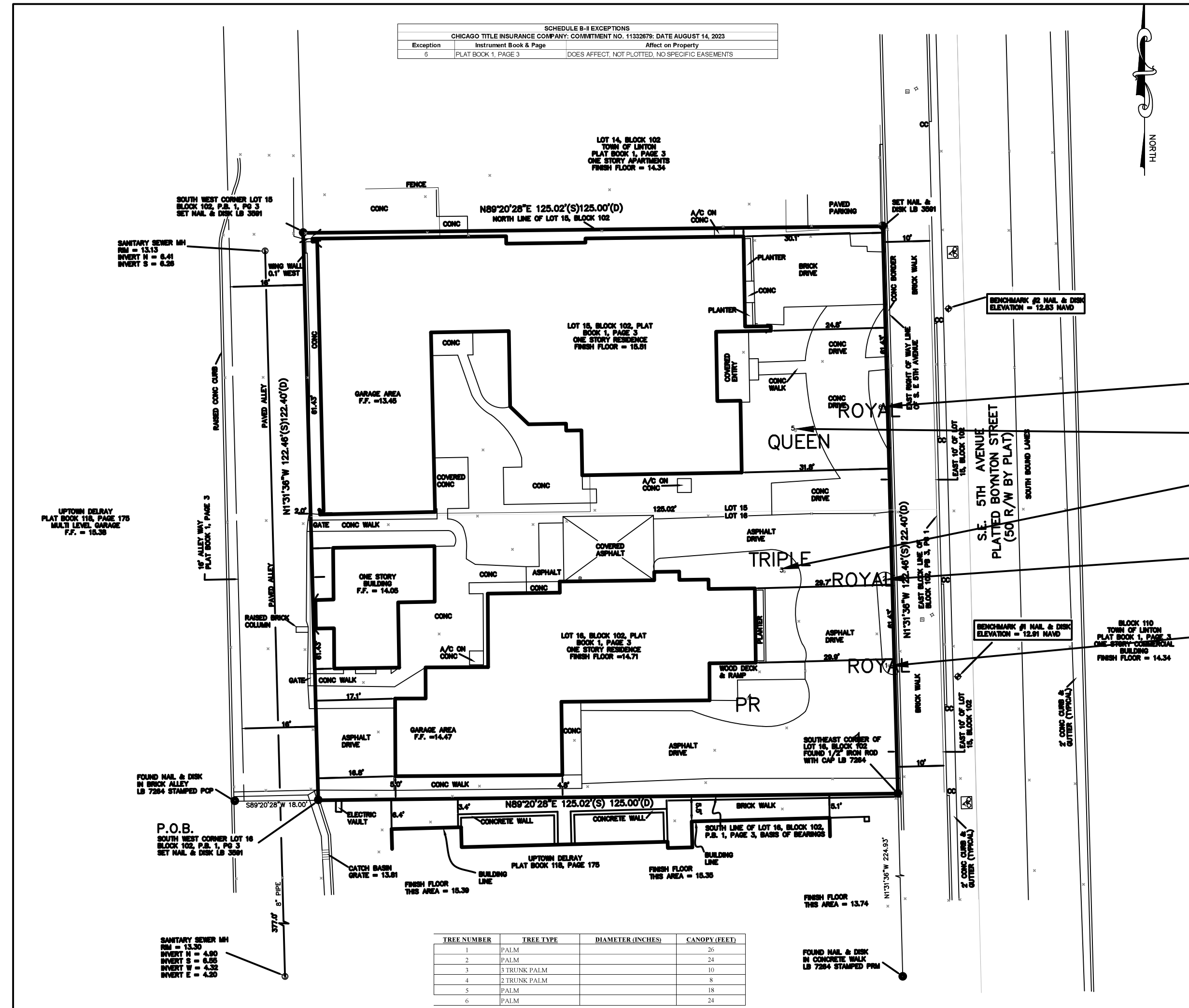
5TH AVENUE TOWNHOMES
DELRAY BEACH, FLORIDA 33483

FLORIDA
IRRIGATION PLAN
DELRAY BEACH

DATE 10/22/23
DRAWN BY GAH
F.B./ PG. --
SCALE 1"=10'

SUBMITTED BY:
G. ALLAN HENDRICKS
LANDSCAPE ARCHITECT
No. LA6658974
STATE OF FLORIDA
-FOR THE FIRM-
DATE

JOB # 10577
SHT. NO.
IR-1
OF 1 SHEETS



EXISTING PLANT MATERIAL

#	COMMON NAME	BOTANICAL NAME	O.A. HT.	C.T. HT.	COND. %	COMMENTS	MITT.
1	ROYAL PALM	ROYSTONEA REGIA	26'	20'	50	NUTRITIONAL DEFICIENT	1, DATE PALM 17' O.A.
2	ROYAL PALM	ROYSTONEA REGIA	24'	17'	40	NUTRITIONAL DEFICIENT	1, DATE PALM 17' O.A.
3	CHRISTMAS PALM (Triple)	ADONIDIA MERRILLI	10'	7'	70	HEALTHY	1, SUNSHINE PALM 18' O.A.
4	QUEEN PALM	SYAGRUS ROMANANZOFFIANA	18'	14'	60	FAIR	1, SUNSHINE PALM 16' O.A.
6	ROYAL PALM	ROYSTONEA REGIA	24'	18'	60	THIN, WEAK	1, SUNSHINE PALM 18' O.A.
			52'				52'

Palms with condition rating of $\geq 50\%$: Replaced with one palm of equal overall heights (OH) or 16 ft OH, whichever is greater

Palms with condition rating of $< 50\%$: Required to be mitigated on a palm-for-palm basis (16' OH X 8 CT for others & 12' OH X 6' CT for SF & Duplex)

ARBORIST REPORT SUBMITTED AS SEPARATE DOCUMENT.

REVISIONS	DATE	BY

CAULFIELD & WHEELER, INC.
 CIVIL ENGINEERING
 LANDSCAPE ARCHITECTURE - SURVEYING
 7500 GLADES ROAD - SUITE 100
 BOCA RATON, FLORIDA 33434
 PHONE (561) 392-1991 / FAX (561) 750-1452

5TH AVENUE TOWNHOMES
 DELRAY BEACH, FLORIDA 33483
 TREE PRESERVATION PLAN
 DELRAY BEACH, FLORIDA

DATE 10/22/23
 DRAWN BY GAH
 F.B./ PG. --
 SCALE 1"=10'

SUBMITTED BY:
 G. ALLAN HENDRICKS
 LANDSCAPE ARCHITECT
 No. LA666974
 STATE OF FLORIDA
 -FOR THE FIRM-
 DATE

JOB # 10577
 SH. NO.
TP-1
 OF 1 SHEETS