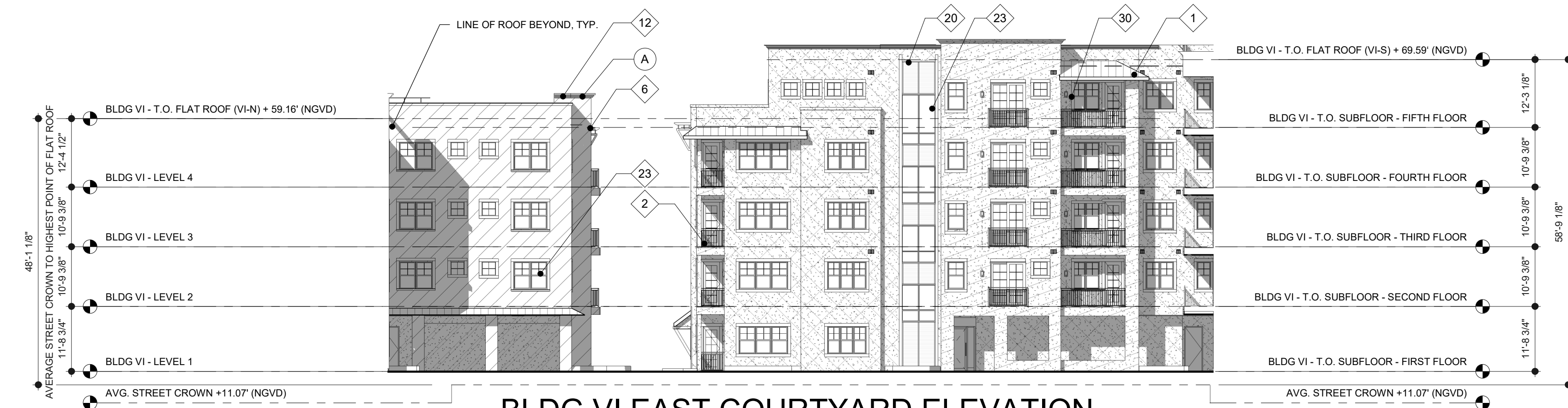


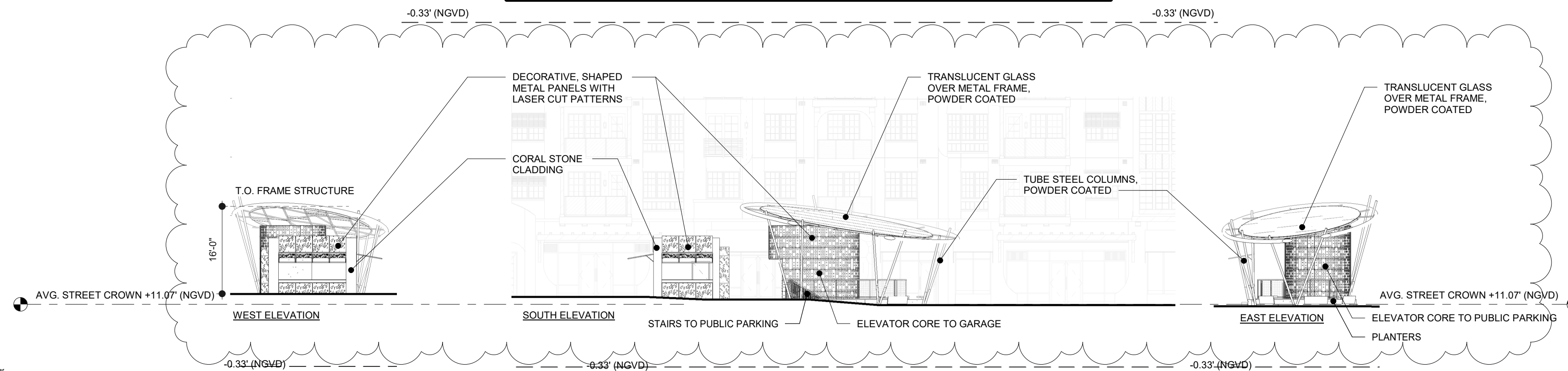
BLDG VI NORTH COURTYARD ELEVATION



BLDG VI SOUTH COURTYARD ELEVATION

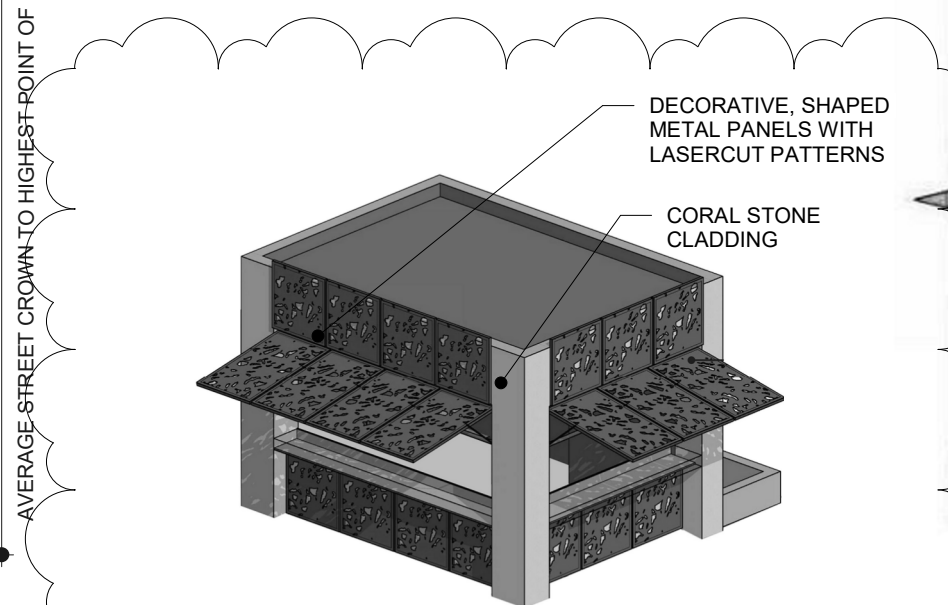


BLDG VI EAST COURTYARD ELEVATION

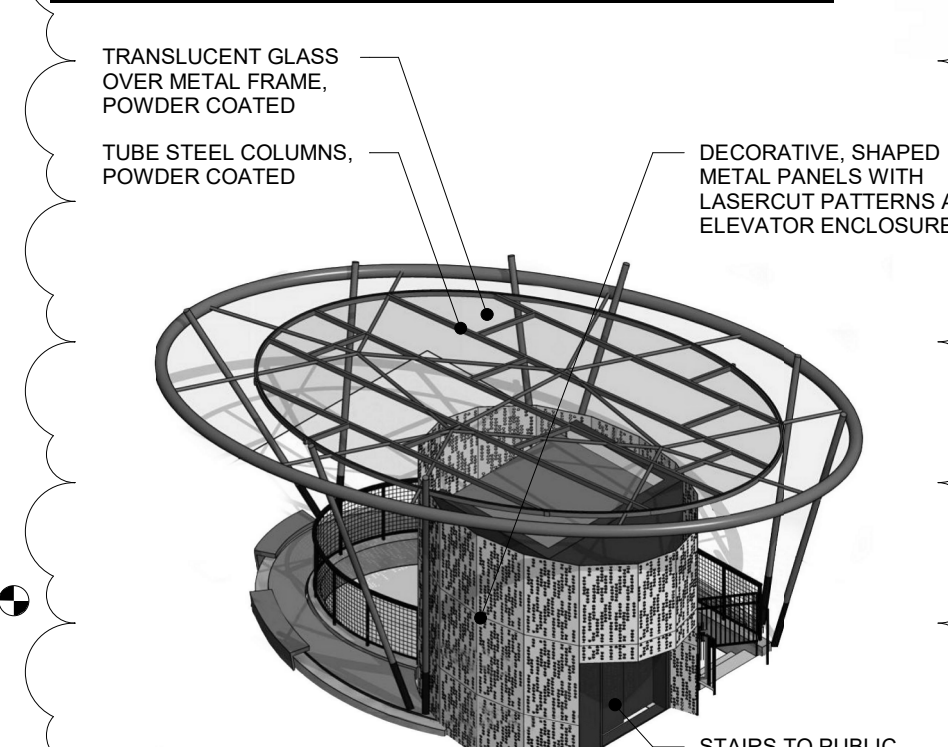


PLAZA ACCESS TO GARAGE

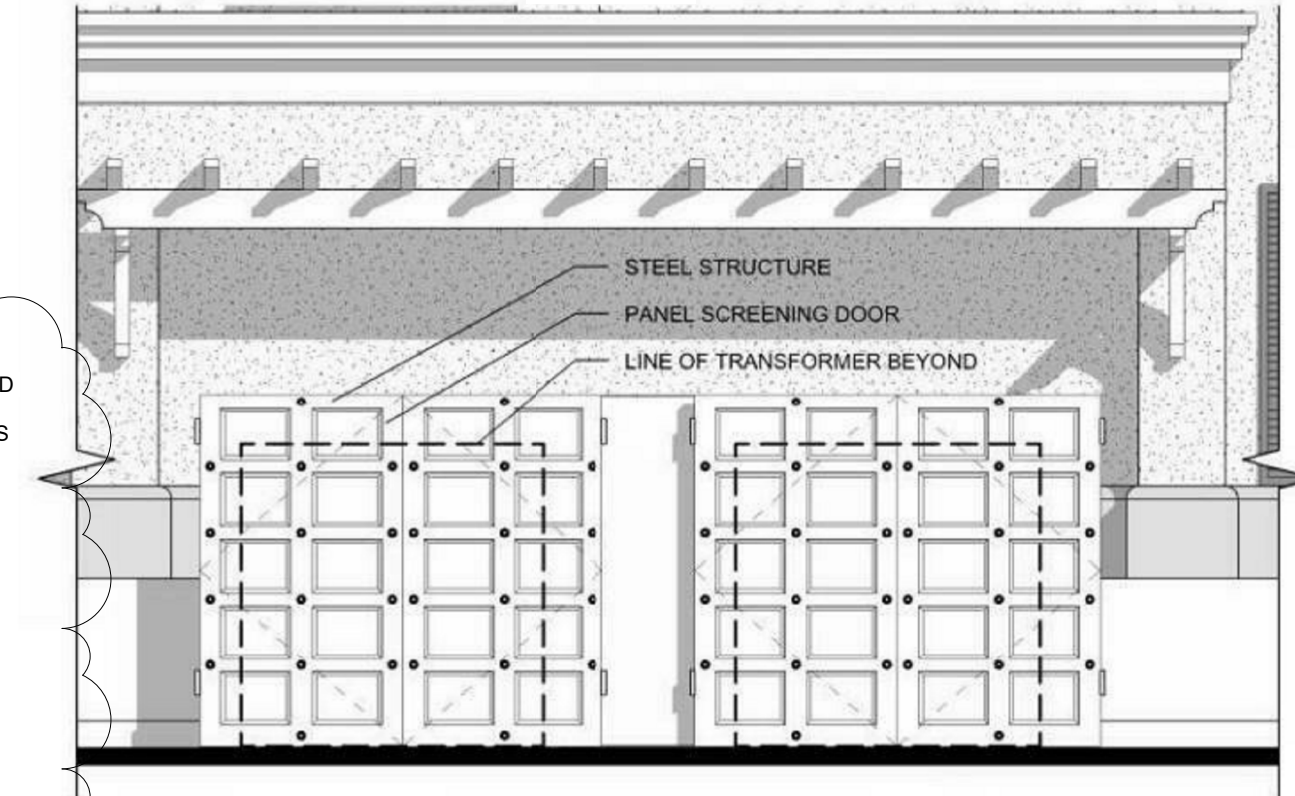
1/16" = 1'-0"



ARTWALK FACING EAST

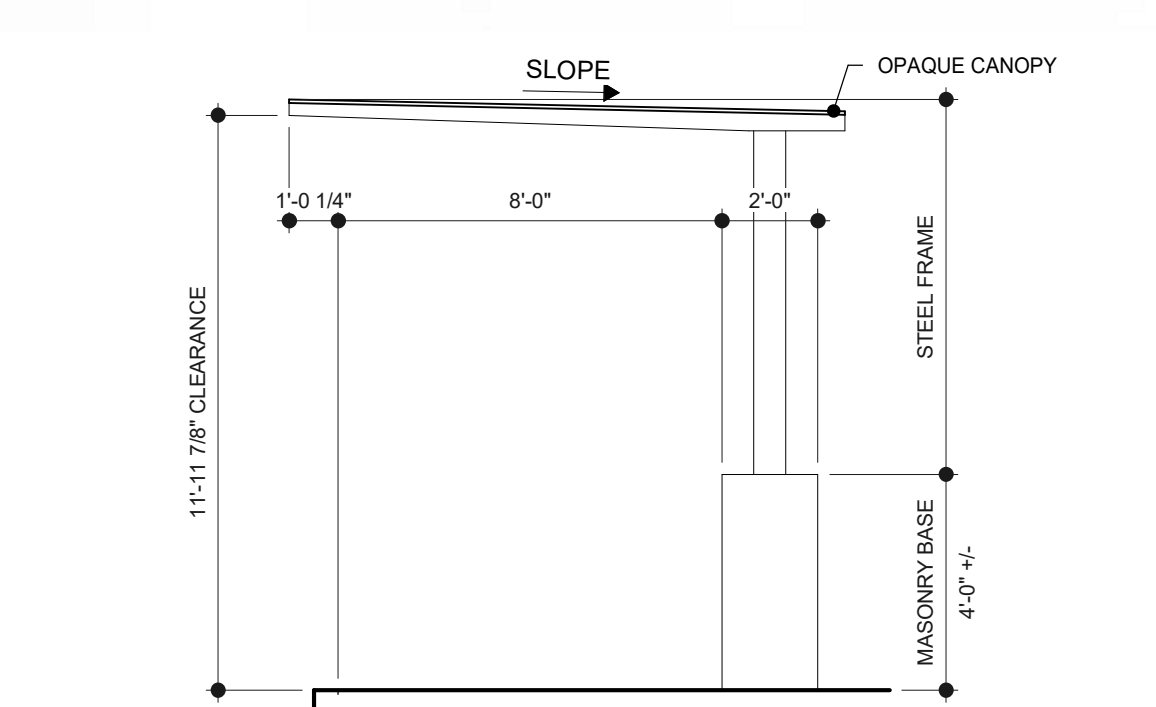


PLAZA ACCESS TO GARAGE



UTILITY SCREENING DOORS

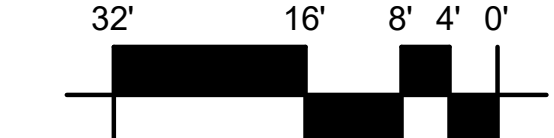
N.T.S.



COVERED WALKWAY AT VALET

BLDG VI COURTYARD ELEVATIONS

DRAWN BY: CS, BB, KK



As indicated

SHEET NUMBER

VOLUME 2

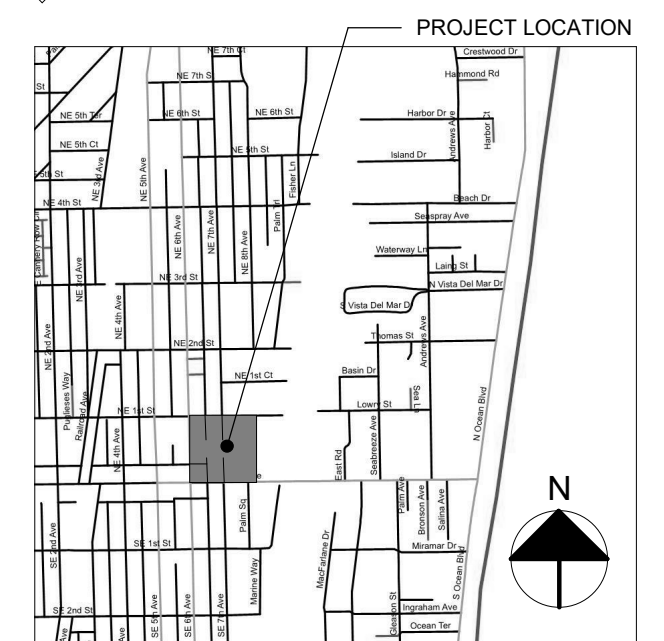
A6.5

DATE: 08.06.2019

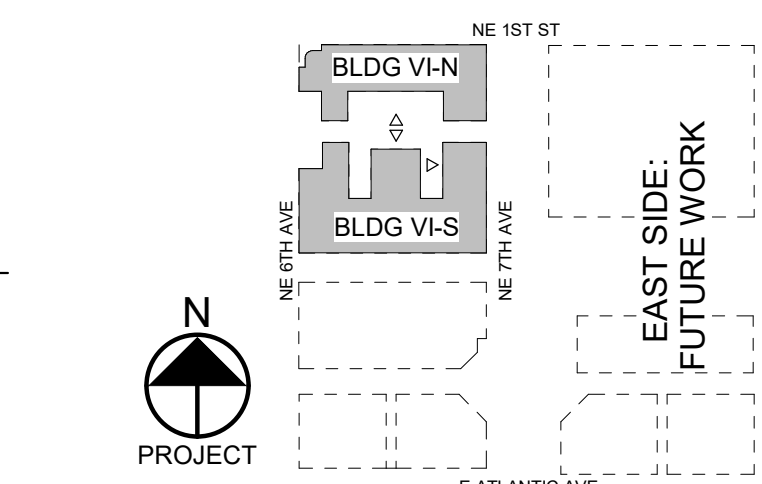
ELEVATION NOTES

NOTE: All wall cladding shall be stucco unless otherwise noted.

- Standing seam metal roof; galvalume
- Ornamental iron railing; powder coated
- Built-up parapet cap; stucco
- Embossed wood texture storefront system
- Storefront system
- Wood pergola & trellis
- Painted composite Bermuda shutters
- Painted composite shutters; fixed
- Fabric awning system
- Decorative corbel
- Built-up stucco sill
- Stucco parapet (6'-0" high max. from top of roof deck)
- Stucco with simulated stone texture base
- Overhead garage door - Glass
- Decorative arched louver panel; powder coated
- Wood boxed out detail
- "Living wall" - Plant material over stainless steel support. Considered a trellis and will be allowed within setback
- Perforated metal panel railing
- Wood panel railing
- Paneled wood accent
- Louvered panels; powder coated
- Steel Trellis
- Vinyl windows
- Decorative wood brackets
- 2" Reveal
- Decorative stucco inset
- Steel Cable Railing
- Fluted column cap; stucco
- Ornamental iron gates and screen; powder coated
- Exterior light fixtures



VICINITY MAP



KEY PLAN