

- 1) BEARINGS SHOWN HEREIN ARE ASSUMED
- 2) NO ABSTRACT OR TITLE SEARCH WAS PERFORMED TO DISCOVER THE EXISTENCE OF ANY EASEMENTS OR RESTRICTIONS OF RECORD.
- 3) ELEVATIONS SHOWN HEREIN ARE BASED ON NAVD 1988 ALL ELEVATION SHOWN HEREIN ARE RELATIVE THERETO
- 4) NO BELOW GROUND IMPROVEMENTS, FOOTERS, FOUNDATIONS OR UTILITIES HAVE BEEN LOCATED OR SHOWN IN THIS SURVEY.

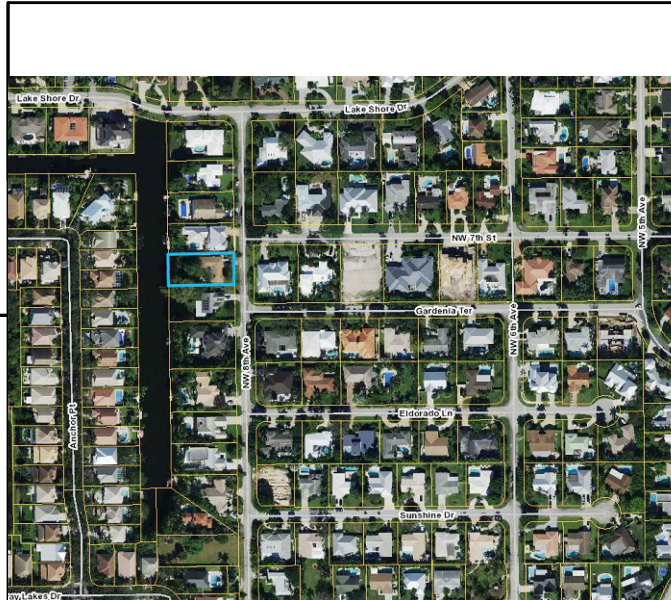
D.R.B. = official record book
C.B.S. = concrete block structure
P.C.C. = point of compound curve
P.C.P. = permanent control point
P.I.C. = point of commencement
P.B. = point of beginning
D/E = drainage easement
C.M.P. = corrugated metal pipe
R.L.S. = registered land surveyor
L.B. = licensed business

TRAN. = transformer pad
F.P.&L. = Florida power and light
C.M. = concrete monument
P.R.C. = point of reverse
P.I. = point of intersection
P.T. = point of tangency
= not field measured
CHATT = chattahoochee
ELEV = elevation

P.B. = plat book
TYP. = typical
R/W = right-of-way
Δ = central angle
@ = bearing basis line
ASPH = asphalt
M/H = manhole
U/E = utility easement
CLF = chain link fence
PRM. = permanent reference monument

P = plat
= power pole
N = MEASURED
IP. = IRON PIPE
R = radius point
L = ARC LENGTH
CL = centerline
P.C. = point of curvature

P.G. = page
I.R. = iron rod
R = radius
D/S = offset
CONC = concrete
ESMT. = easement
CALC. = calculated



NORTH
NOT TO SCALE
NORTH
VICINITY
MAP

801 S.E. 6th Ave., Suite 203
Delray Beach, FL 33483

Phone 561-243-4624

CERTIFIED TO:

AUTHORIZATION NUMBER LB6504

I HEREBY CERTIFY THAT THE SKETCH OF BOUNDARY SURVEY SHOWN HEREON MEETS THE STANDARDS OF PRACTICE SET FORTH IN CHAPTER SJ-17-050-052, FLORIDA ADMINISTRATIVE CODE PURSUANT TO SECTION 472.027, FLORIDA STATUTES.

HARRY A BURGESS PLS 5089

FLOOD ZONE: X

MAP NO: 12099C0977F

MAP DATE: 10-5-2017

DATE: 9-9-2024

JOB NO. 9-24-002

REVISED

NOT VALID
UNLESS SEALED
WITH EMBOSSED
SURVEYOR'S SEAL