

**A Building for:  
 Drutau Retail**  
 Northwest Corner of  
 Atlantic Ave & NW 18 Ave  
 Delray Beach, Florida

Symbol	Qty	Label	Arrangement	Manufacturer	Description	Luminaire Lumens	LLF	Luminaire Watts	Assembly Watts
	1	SA	SINGLE	Lithonia Lighting	DSXO LED P1 40K TFTM MVOLT HS MH: POLE MOUNT A.F.G	3678	0.903	38	38
	2	SL	SINGLE	Lithonia Lighting	DSXO LED P1 40K LCCO MVOLT MH: POLE MOUNT A.F.G	2875	0.903	38	38
	1	SR	SINGLE	Lithonia Lighting	DSXO LED P1 40K RCCO MVOLT MH: POLE MOUNT A.F.G	2875	0.903	38	38
	1	THE DELRAY	SINGLE	Spring City Electrical Manufacturing Co	DLR-LED95-202-40-CR3-GR18 MH: POST TOP MOUNT A.F.G	9294	0.855	95	95

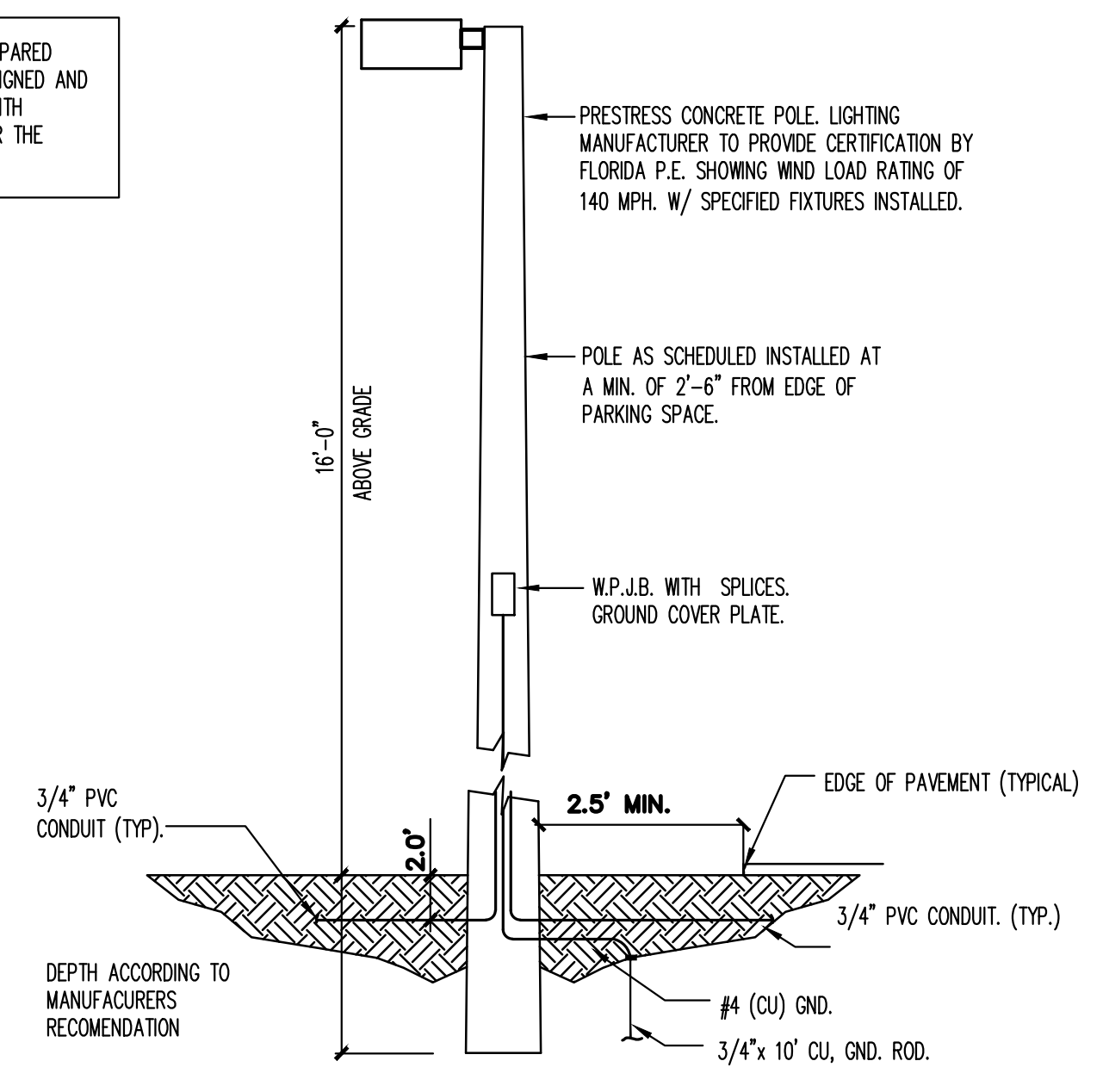
Label	CalcType	Units	Avg	Max	Min	Avg/Min	Max/Min
PARKING LOT Planar	Illuminance	Fc	2.40	4.2	1.0	2.40	4.20
BUILDING ENTRANCE Planar	Illuminance	Fc	1.35	1.5	1.2	1.35	1.5
PROPERTY LINE NORTH (horizontal 6' grade)	Illuminance	Fc	0.86	4.87	0.01	86.00	487.00
PROPERTY LINE NORTH (vertical 6' grade)	Illuminance	Fc	1.58	8.74	0.01	158.00	874.00
PROPERTY LINE WEST (horizontal 6' grade)	Illuminance	Fc	0.02	0.05	0.01	2.00	5.00
PROPERTY LINE WEST (vertical 6' grade)	Illuminance	Fc	0.12	0.28	0.04	3.00	7.00
SIDE WALK	Illuminance	Fc	1.13	1.9	0.8	1.41	2.38

"AS BUILT" PHOTOMETRY PLAN IS REQUIRED TO BE SUBMITTED TO THE ZONING DEPARTMENT PRIOR TO CERTIFICATE OF OCCUPANCY ISSUANCE.

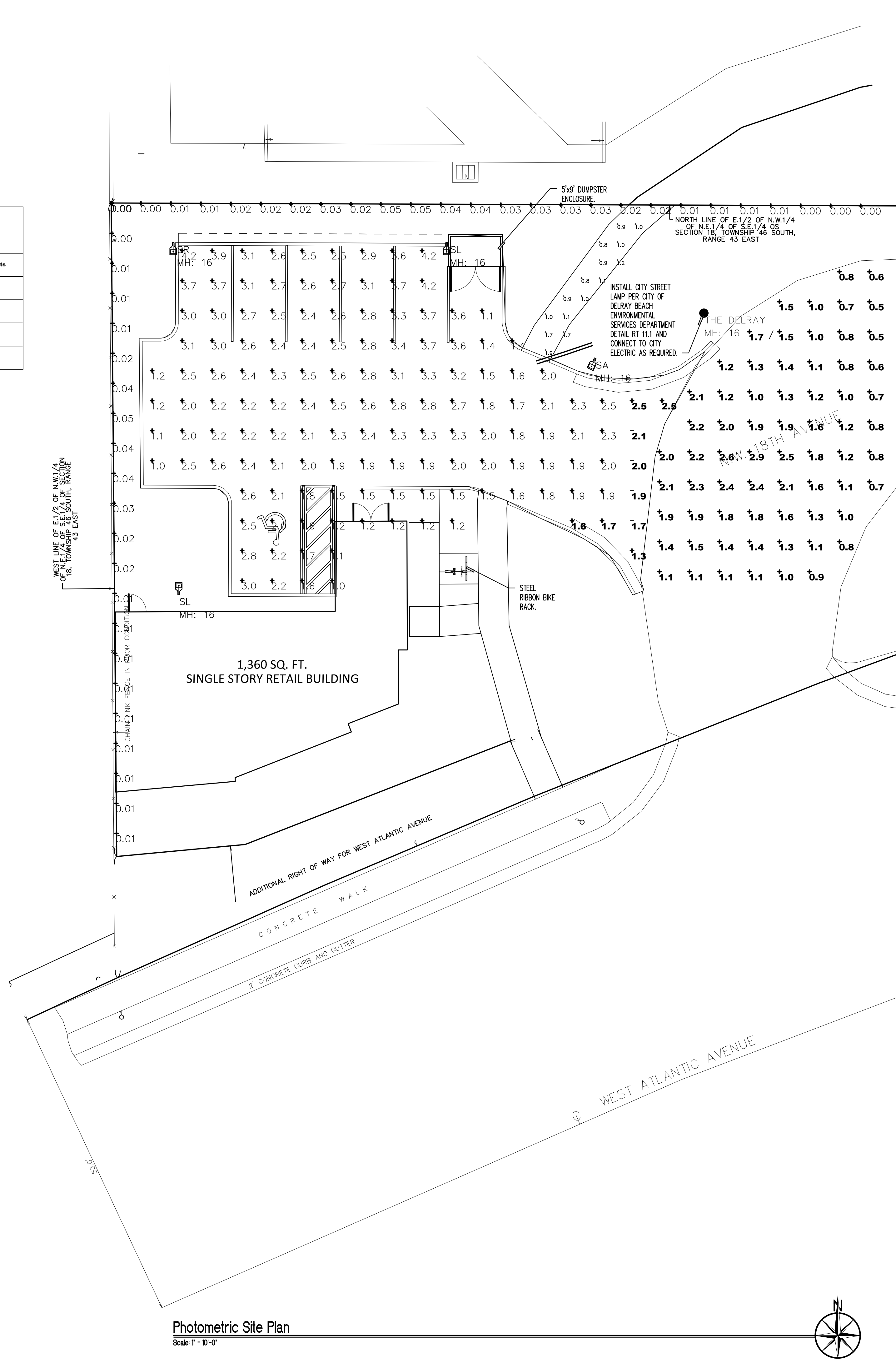
- NOTES:**
- THIS PHOTOMETRIC PLAN IS BASED ON NEW POLE MOUNTED LUMINAIRES AS SHOWN.
  - THE CONTRACTOR SHALL SUBMIT FIELD MEASURED ILLUMINATION LEVELS AS A PHOTOMETRIC AS BUILT. CROSS OFF LEVELS SHOWN AND WRITE MEASURED LEVELS ADJACENT THERE TO. MEASUREMENTS ARE ONLY REQUIRED IN AREAS OF MAXIMUM AND MINIMUM ILLUMINATION LEVELS.
  - SUBSTITUTION TO OTHER LIGHTING MANUFACTURER LUMINAIRES WILL NOT BE ACCEPTED WITHOUT SUBMITTING A NEW PHOTOMETRIC DRAWING FOR APPROVAL. THIS NEW PHOTOMETRIC DRAWING WILL EQUAL OR EXCEED THE LIGHTING LEVELS SHOWN HERE. ALL THE NOTES ON THIS DRAWING WILL APPLY TO ANY LUMINAIRES PROVIDED BY THE CONTRACTOR AND SHOWN AS AN ALTERNATE/ EQUAL PHOTOMETRIC PLAN.
  - ALL LUMINAIRES ARE FULL CUT OFF.

THE LIGHT LEVELS INDICATED ON THIS DRAWING REPRESENT THE PHOTOMETRIC CALCULATIONS AS PREPARED AND SUBMITTED BY USING THE LIGHTING VENDORS PROGRAM FOR THE SPECIFIED LUMINAIRES. THIS SIGNED AND SEALED PHOTOMETRIC PLAN ONLY SERVES TO VERIFY THAT THE LIGHT LEVELS AS SHOWN COMPLY WITH KNOWN LOCAL REQUIREMENTS. IT DOES NOT GUARANTEE THE PERFORMANCE OF THE LUMINAIRES NOR THE ACTUAL ILLUMINATION LEVELS.

POLE WEIGHT = 1200 LBS  
 EPA CAPACITY = 191.50' OR 300 LBS  
 WIND SPEED = 140 MPH  
 GUST FACTOR = 13  
 MIN-BRK STRENGTH = 2600  
 CONCRETE = 6,500 LBS @ 28 DAYS  
 GRD. WRES = 6 BR COOPER  
 STRAND = 500" @ 10% ULTIMATE  
 TENON = 2 - 3/8" OD X 5" HGT  
 COLOR = NATURAL CONCRETE



**Light Pole Detail**  
 Scale: NTS  
 1 PH-10



**Photometric Site Plan**  
 Scale: 1" = 10'-0"

ISSUANCE OF DOCUMENTATION:	
Description:	Date:
	6.24.2019
	8.5.2020
	8.5.2020

REVISIONS:		
Number:	Date:	Description:
1	12.7.2020	ZONING REVIEW
2	11.11.2021	ZONING REVIEW

**PHOTOMETRIC SITE PLAN**

Project Number: **19016**  
 Principal: RJS  
 Project Manager: RJS  
 Drawn by: RJS

STATE OF FLORIDA  
 REGISTERED ARCHITECT  
**Architecture**  
**A 100.2**  
 Total Sheets: **4**

All ideas, designs, arrangements and items included or represented by this drawing are owned, the property of and the copyright of Robert Jordan Sopoun III or ARJS Architects, Inc. This document is provided, revised and approved for the use on and in connection with the project identified in the title block. It is not to be used for any other project without the written consent of ARJS Architects, Inc. The user of this document is responsible for obtaining all necessary permits and approvals from the appropriate authorities. ARJS Architects, Inc. does not warrant, represent or guarantee the accuracy or completeness of the information contained herein, and no such warranty is made by ARJS Architects, Inc.