

SPECIFICATIONS

CABINET  
ALUMINUM CABINET HAS EXTRUDED ALUMINUM FRAME .  
CHICK-FIL-A ICON  
ACRYLIC FACES DECORATED WITH TRANSLUCENT VINYL  
FILM ON SURFACE OF ACRYLIC. FACES ARE BACKLIT BY  
HIGH OUTPUT FLUORESCENT LAMPS SPACED EVENLY  
ON 8” CENTERS.



FACES  
230-53 CARDINAL RED  
TRANSLUCENT VINYL FILM



7328 WHITE ACRYLIC

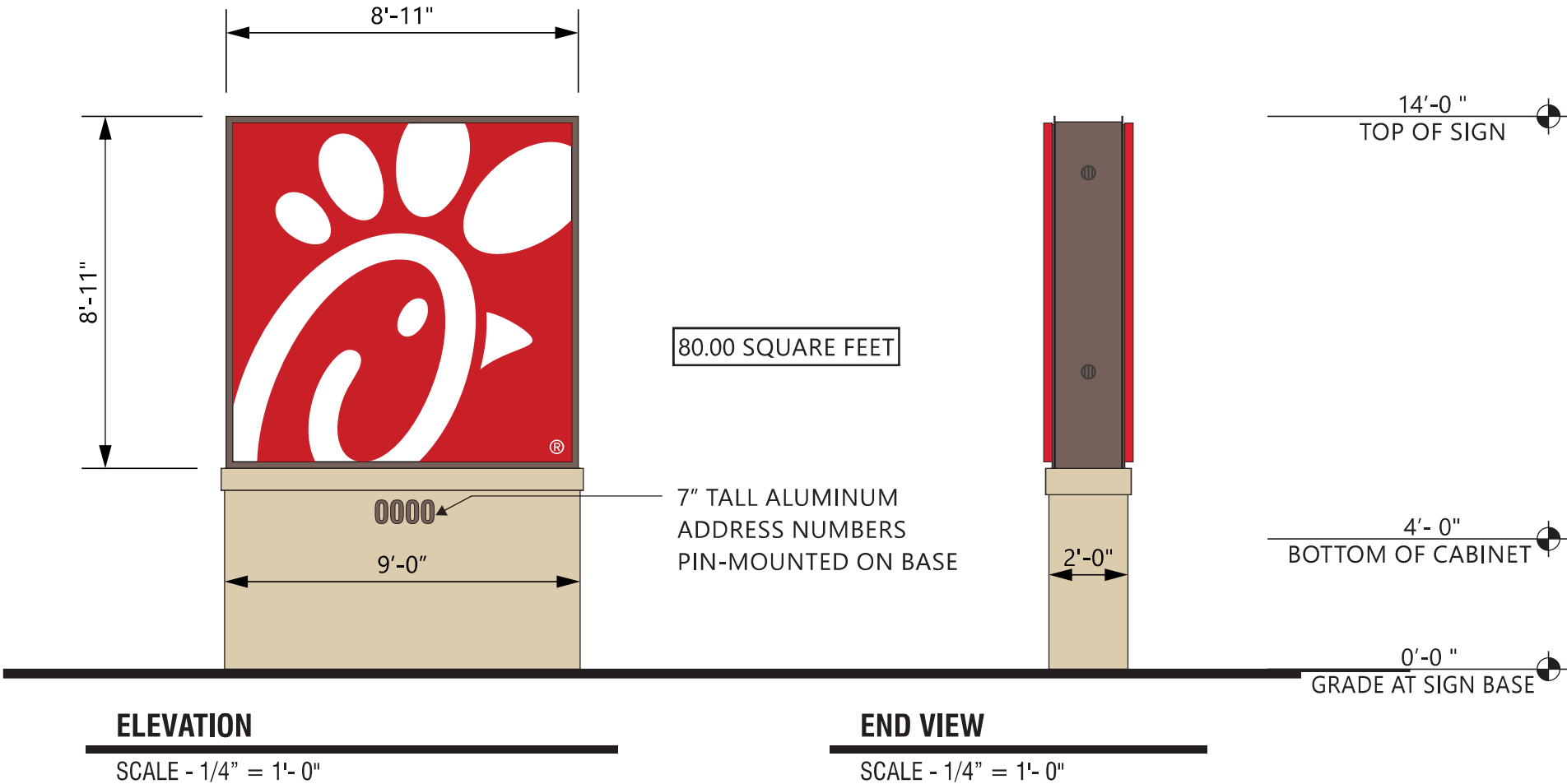




PAINTED DARK BRONZE  
TO MATCH BUILDING



PAINTED TO MATCH  
BUILDING WITH STUCCO FINISH

REFER TO  
ENGINEERS STAMPED  
DRAWING FOR FOUNDATION



**FLOURESCENT CABINET**

**LIGHTING**  
T8/HO/LAMPS  
**POWER SUPPLY**  
EESB ELECTRONIC BALLAST

CONNECT THE AC LINE TO THE BLACK (LINE) AND WHITE (NEUTRAL) INPUT WIRES OF THE POWER SUPPLY USING 18-14 AWG TWIST ON WIRE CONNECTORS. GROUND POWER SUPPLY GREEN WIRE TO GROUNDING SCREW.

WHITE

BLACK

YEL/GRN

BALLAST

BLUE

RED

WET LOCATION

THIS SIGN IS ITENDED TO BE INSTALLED IN ACCORDANCE WITH REQUIREMENTS OF ARTICLE 600 OF THE NATIONAL ELECTRICAL CODE AND/OR APPLICABLE LOCAL CODES. THIS INCLUDES PROPER GROUNDING & BONDING OF THE SIGN.



5198 North Lake Drive  
Lake City, GA 30260  
404.361.3800  
www.claytonsigns.com

MONUMENT SIGN

DRAWING FILE - CFA - DELRAY BEACH, FL (ATLANTIC & MILITARY) SIGNAGE.CDR

ALL ELECTRICAL  
SIGNS ARE  
120 VOLTS  
UNLESS  
OTHERWISE INDICATED

DRAWN BY	Ben Holliday
ACCOUNT REP.	Ben Holliday
DRAWING DATE	July 16, 2015
REVISION DATE	May 7, 2019

STORE NUMBER	STORE ADDRESS
L03707	Chick-fil-A at Delray Beach, FL (Atlantic) West Atlantic Avenue Delray Beach, Florida 33445

THIS DRAWING IS AN ORIGINAL, UNPUBLISHED DESIGN CREATED BY CLAYTON SIGNS, INC. IT IS NOT TO BE REPRODUCED, CHANGED, OR EXHIBITED TO ANYONE OUTSIDE OF YOUR COMPANY IN WHOLE OR IN PART WITHOUT WRITTEN PERMISSION FROM THE OWNER OF CLAYTON SIGNS, INC.. ANY SUCH ACTIONS MAY BE SUBJECT TO LEGAL ACTION IN A COURT OF LAW.

©2016 ALL RIGHTS RESERVED

LOCATION  
A

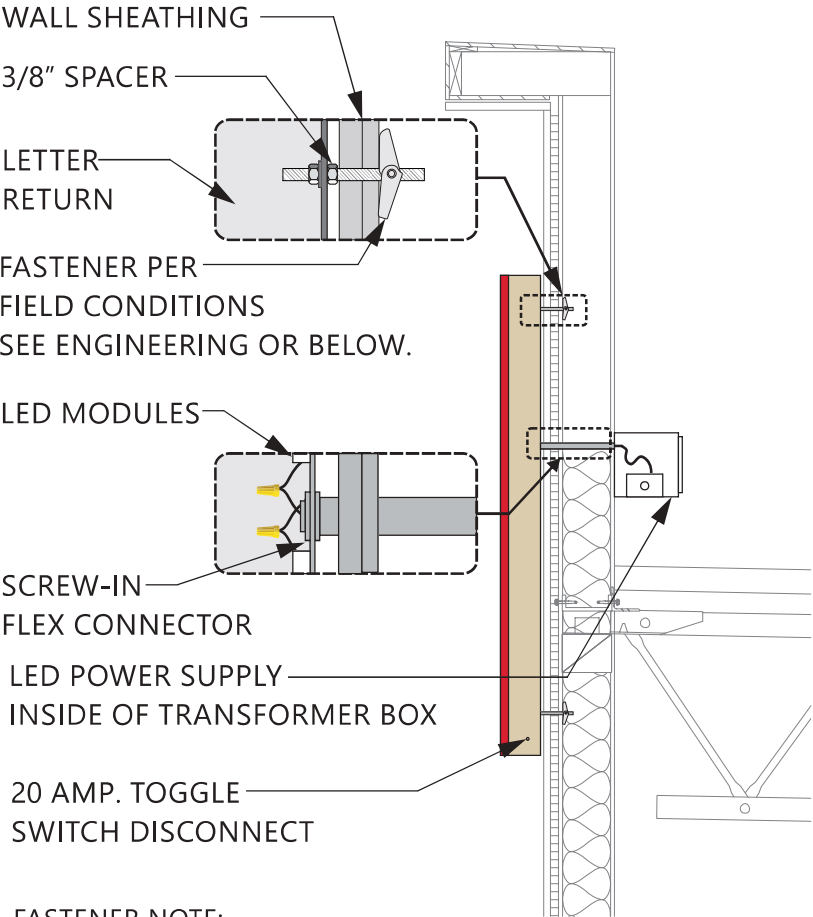
SPECIFICATIONS

CHICK-FIL-A SCRIPT LETTERS  
LETTERS ARE LED-ILLUMINATED  
CHANNEL LETTERS MOUNTED  
ON ALUMINUM SURFACE OF BUILDING  
WITH TRANSFORMERS REMOTELY  
LOCATED BEHIND THE WALL IN  
UL APPROVED TRANSFORMER BOXES.  
FACES ARE 3/16" ACRYLIC  
RETURNS ARE .063 ALUMINUM  
BACKS ARE .080 ALUMINUM  
ALL RETURNS ARE ARC-WELDED TO  
LETTER BACKS

- CHANNEL LETTER FACES  
2793 RED ACRYLIC  
TRIMCAP RETAINER-  
1" RED JEWELITE TRIMCAP
- ALUMINUM RETURNS  
PAINTED TO MATCH  
SHERWIN WILLIAMS  
SW6108 LATTE



ELEVATION  
SCALE - 1/2" = 1'- 0"



FASTENER NOTE:  
USE 18-8 STAINLESS STEEL BOLTS W/ SPACERS THRU EIFS.  
EXPANSION BOLTS IN CONCRETE OR BRICK WALLS.  
TOGGLE BOLTS IN CONCRETE BLOCK OR PANEL WALLS.  
TEK SCREWS IN METAL STUDS. LAG-BOLTS IN WOOD STUDS.  
ALL THREAD BOLTS WITH BLOCKING BETWEEN STUDS.

CROSS-SECTION  
SCALE - 1/2" = 1'- 0"

CLAYTON  
Signs

UL LISTED

CHANNEL LETTERS (RED ILLUMINATION)

LED's  
JTSL5016R-0.4 RED LED  
POWER SUPPLY  
BL-120-12-60 POWER SUPPLY

WET LOCATION

CONNECT THE AC LINE TO THE BLACK (LINE) AND WHITE (NEUTRAL) INPUT WIRES OF THE POWER SUPPLY USING 18-14 AWG TWIST ON WIRE CONNECTORS. GROUND POWER SUPPLY GREEN WIRE TO GROUNDING SCREW. REPLACE JUNCTION BOX COVER.

Green with yellow stripe (ground)  
White (neutral)  
Black (line)  
AC line

THIS SIGN IS ITENDED TO BE INSTALLED IN ACCORDANCE WITH REQUIREMENTS OF ARTICLE 600 OF THE NATIONAL ELECTRICAL CODE AND/OR APPLICABLE LOCAL CODES. THIS INCLUDES PROPER GROUNDING & BONDING OF THE SIGN.

SPECIFICATIONS

CHICK-FIL-A SCRIPT LETTERS  
LETTERS ARE LED-ILLUMINATED  
CHANNEL LETTERS MOUNTED  
ON ALUMINUM SURFACE OF BUILDING  
WITH TRANSFORMERS REMOTELY  
LOCATED BEHIND THE WALL IN  
UL APPROVED TRANSFORMER BOXES.  
FACES ARE 3/16" ACRYLIC  
RETURNS ARE .063 ALUMINUM  
BACKS ARE .080 ALUMINUM  
ALL RETURNS ARE ARC-WELDED TO  
LETTER BACKS



CHANNEL LETTER FACES  
2793 RED ACRYLIC  
TRIMCAP RETAINER-  
1" RED JEWELITE TRIMCAP

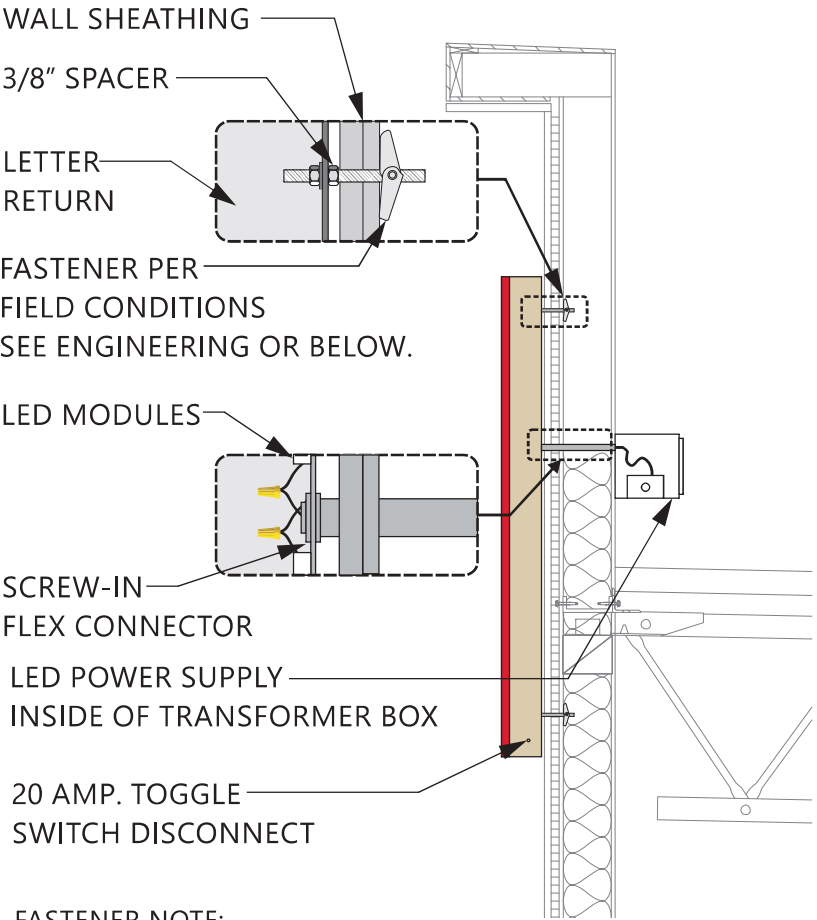


ALUMINUM RETURNS  
PAINTED TO MATCH  
SHERWIN WILLIAMS  
SW6108 LATTE



ELEVATION


SCALE - 1/2" = 1'- 0"



FASTENER NOTE:  
USE 18-8 STAINLESS STEEL BOLTS W/ SPACERS THRU EIFS.  
EXPANSION BOLTS IN CONCRETE OR BRICK WALLS.  
TOGGLE BOLTS IN CONCRETE BLOCK OR PANEL WALLS.  
TEK SCREWS IN METAL STUDS. LAG-BOLTS IN WOOD STUDS.  
ALL THREAD BOLTS WITH BLOCKING BETWEEN STUDS.

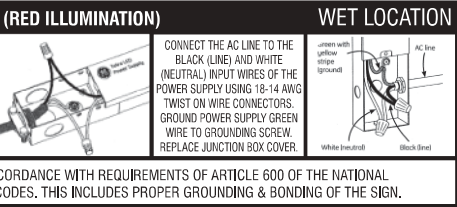
CROSS-SECTION

SCALE - 1/2" = 1'- 0"



**CHANNEL LETTERS (RED ILLUMINATION)**

LED's  
JTSL5016R-0.4 RED LED  
POWER SUPPLY  
BL-120-12-60 POWER SUPPLY



**WET LOCATION**

CONNECT THE AC LINE TO THE BLACK (LINE) AND WHITE (NEUTRAL) INPUT WIRES OF THE POWER SUPPLY USING 18-14 AWG TWIST ON WIRE CONNECTORS. GROUND POWER SUPPLY GREEN WIRE TO GROUNDING SCREW. REPLACE JUNCTION BOX COVER.

Green with yellow stripe (ground)  
White (neutral)  
Black (line)  
AC line

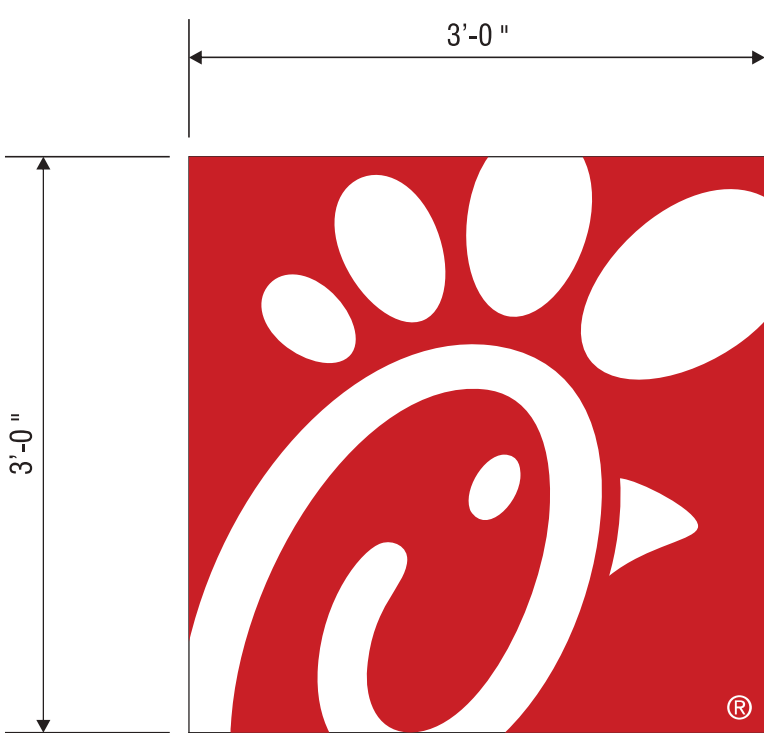
THIS SIGN IS ITENDED TO BE INSTALLED IN ACCORDANCE WITH REQUIREMENTS OF ARTICLE 600 OF THE NATIONAL ELECTRICAL CODE AND/OR APPLICABLE LOCAL CODES. THIS INCLUDES PROPER GROUNDING & BONDING OF THE SIGN.

SPECIFICATIONS

CHICK-FIL-A ICON  
ALUMINUM CABINET HAS STEEL FRAME WITH .080 ALUMINUM  
CLADDING, RETAINERS AND FILLER.  
ACRYLIC FACES DECORATED WITH TRANSLUCENT VINYL  
FILM ON SURFACE OF ACRYLIC. FACES ARE BACKLIT BY  
WHITE LED'S.

CHANNEL LETTER FACES  
2793 RED ACRYLIC  
TRIMCAP RETAINER-  
1" RED JEWELITE TRIMCAP

7328 WHITE ACRYLIC



9.00 SQUARE FEET



ELEVATION

SCALE - 1" = 1'- 0"

END VIEW

SCALE - 1" = 1'- 0"

CLAYTON Signs		SINGLE FACED CABINET		WET LOCATION	
UL LISTED	LED'S GEWHSSPS3 - 71K - SINGLED SID		CONNECT THE AC LINE TO THE BLACK (LINE) AND WHITE (NEUTRAL) INPUT WIRES OF THE POWER SUPPLY USING 18-14 AWG TWIST ON WIRE CONNECTORS. GROUND POWER SUPPLY GREEN WIRE TO GROUNDING SCREW. REPLACE JUNCTION BOX COVER.		Green with yellow stripe (ground) AC line White (neutral) Black (line)
	POWER SUPPLY GEPS12 - 12V POWER SUPPLY				
THIS SIGN IS ITENDED TO BE INSTALLED IN ACCORDANCE WITH REQUIREMENTS OF ARTICLE 600 OF THE NATIONAL ELECTRICAL CODE AND/OR APPLICABLE LOCAL CODES. THIS INCLUDES PROPER GROUNDING & BONDING OF THE SIGN.					



5198 North Lake Drive  
Lake City, GA 30260  
404.361.3800  
www.claytonsigns.com

WALL SIGN

DRAWING FILE - CFA - DELRAY BEACH, FL (ATLANTIC & MILITARY) SIGNAGE.CDR

ALL ELECTRICAL  
SIGNS ARE  
120 VOLTS  
UNLESS  
OTHERWISE INDICATED

DRAWN BY	Ben Holliday
ACCOUNT REP.	Ben Holliday
DRAWING DATE	July 16, 2015
REVISION DATE	May 7, 2019

STORE NUMBER	STORE ADDRESS
L03707	Chick-fil-A at Delray Beach, FL (Atlantic) West Atlantic Avenue Delray Beach, Florida 33445

THIS DRAWING IS AN ORIGINAL, UNPUBLISHED DESIGN CREATED BY CLAYTON SIGNS, INC. IT IS NOT TO BE REPRODUCED, CHANGED, OR EXHIBITED TO ANYONE OUTSIDE OF YOUR COMPANY IN WHOLE OR IN PART WITHOUT WRITTEN PERMISSION FROM THE OWNER OF CLAYTON SIGNS, INC.. ANY SUCH ACTIONS MAY BE SUBJECT TO LEGAL ACTION IN A COURT OF LAW.  
©2016 ALL RIGHTS RESERVED

LOCATION

E

SPECIFICATIONS

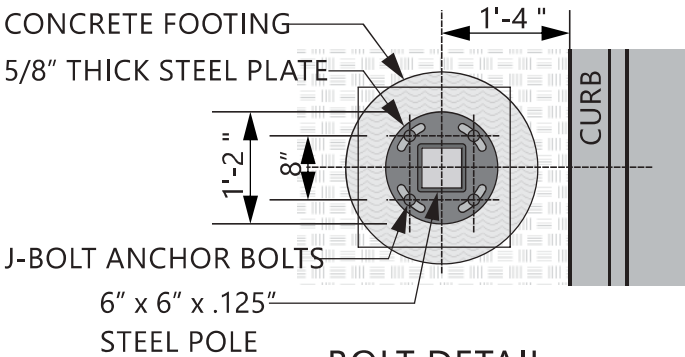
CANOPY TOP  
METAL TOP (OPAQUE) WITH COLOR TO MATCH BUILDING COLOR.

STRUCTURE  
6" X 6" STEEL SUPPORT POLE INSTALLED INTO CONCRETE FOOTING WITH ANCHOR BOLTS. 3" ALUMINUM TUBING FRAME ON CANOPY TOP.

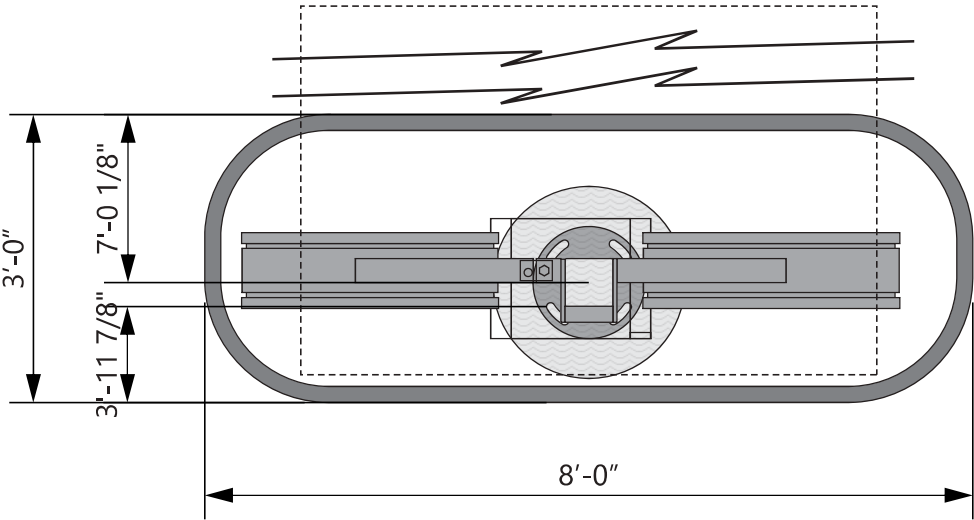
MENU BOARDS  
PIVOTING ALUMINUM CONSTRUCTION CABINETS INTERNALLY ILLUMINATED WITH OPENINGS TO FIT MENU GRAPHICS. BOARDS INFERNALLY ILLUMINATED BY LEDS.

DARK BRONZE

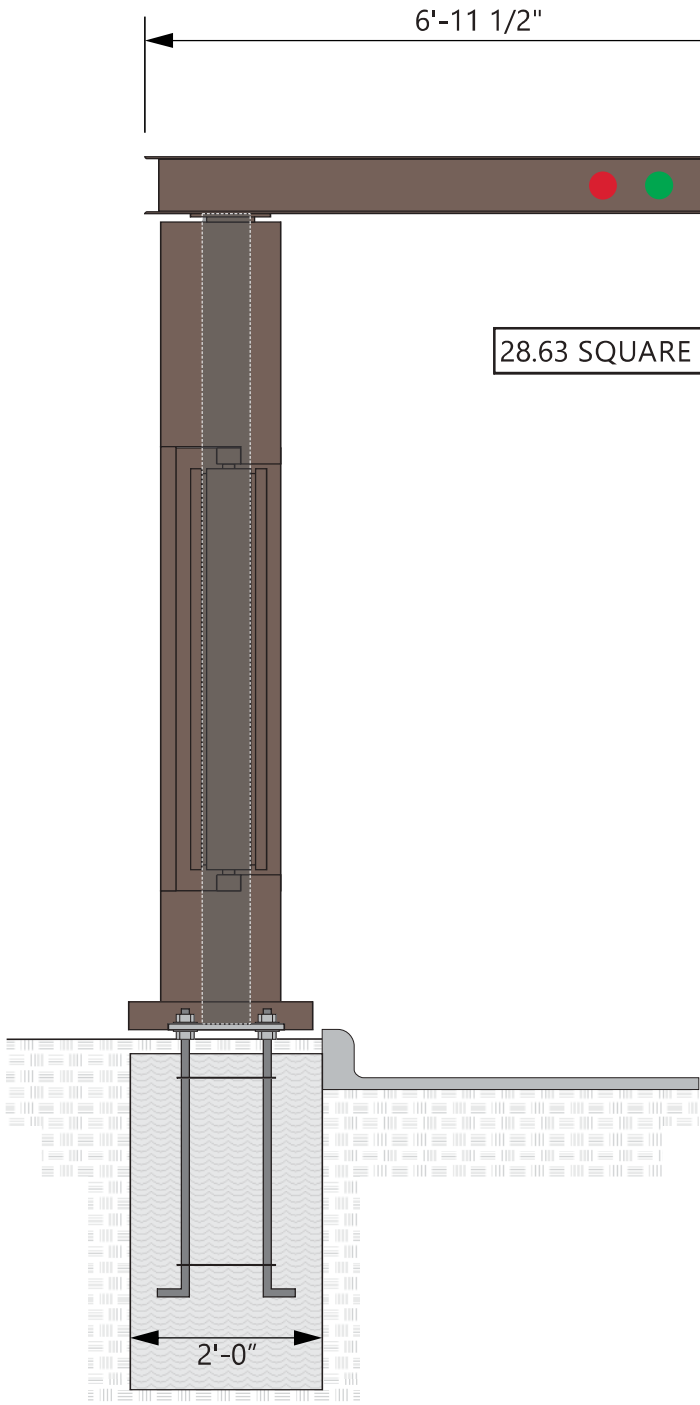
WHITE VINYL FILM



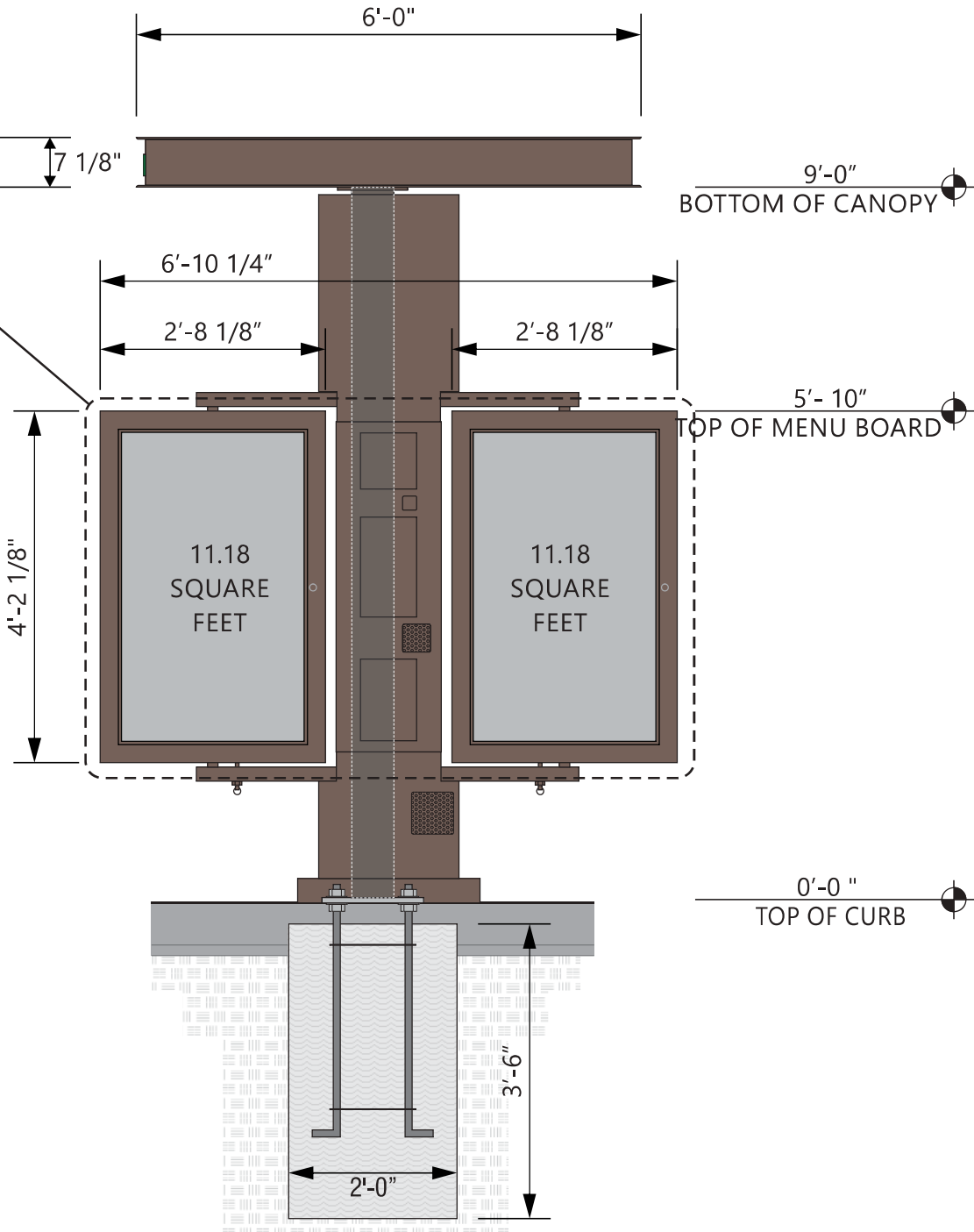
BOLT DETAIL  
SCALE - 1/2" = 1'- 0"



OUTER ISLAND PLAN VIEW  
SCALE - 1/2" = 1'- 0"



END VIEW  
SCALE - 1/2" = 1'- 0"



ELEVATION  
SCALE - 1/2" = 1'- 0"



5198 North Lake Drive  
Lake City, GA 30260  
404.361.3800  
www.claytonsigns.com

DRIVE-THRU MENU  
BOARDS / CANOPIES

DRAWING FILE - CFA - DELRAY BEACH, FL (ATLANTIC & MILITARY) SIGNAGE.CDR

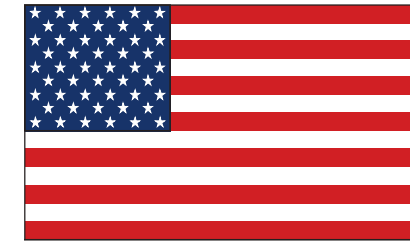
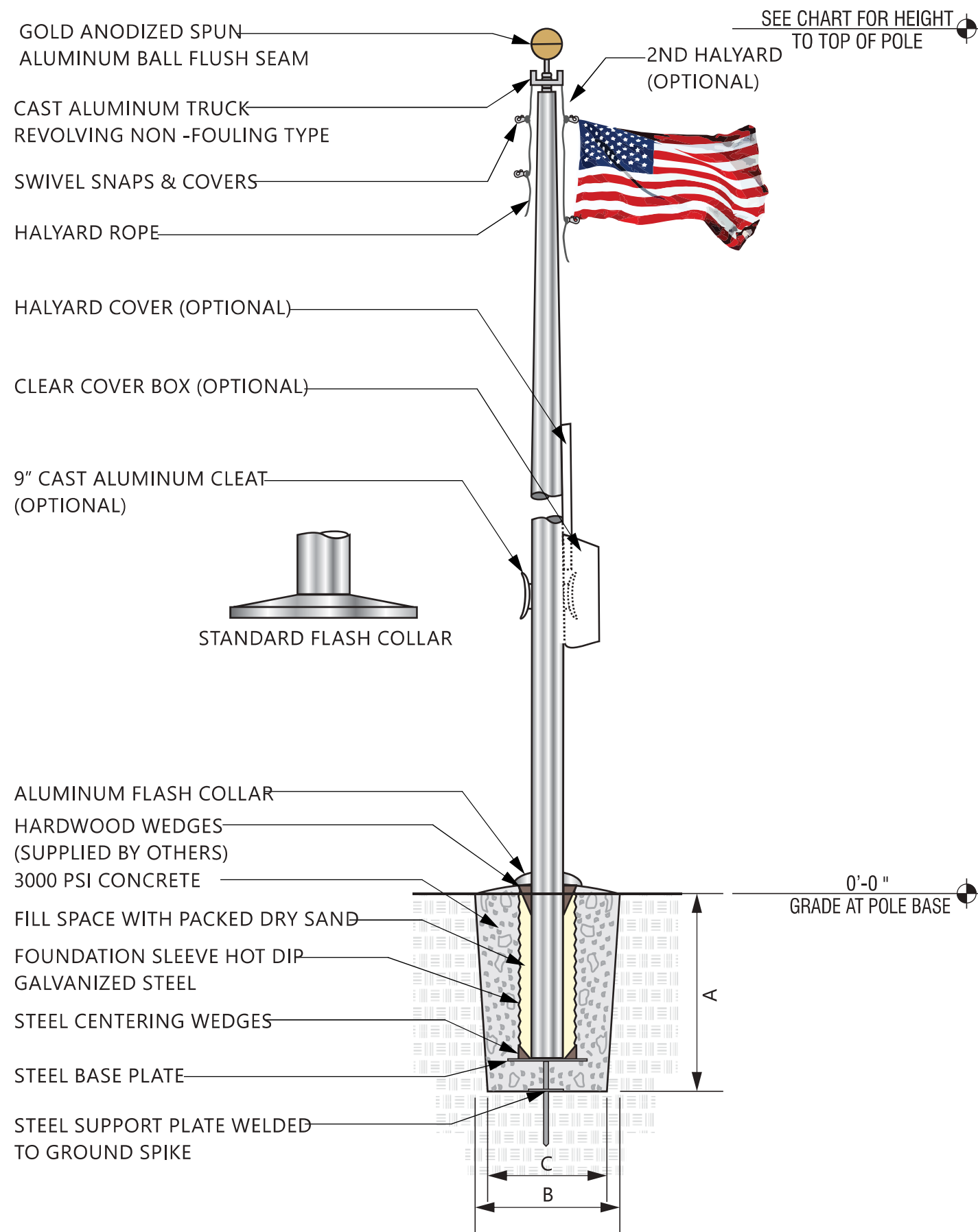
ALL ELECTRICAL  
SIGNS ARE  
120 VOLTS  
UNLESS  
OTHERWISE INDICATED

DRAWN BY Ben Holliday  
ACCOUNT REP. Ben Holliday  
DRAWING DATE July 16, 2015  
REVISION DATE May 7, 2019

STORE NUMBER	STORE ADDRESS
L03707	Chick-fil-A at Delray Beach, FL (Atlantic) West Atlantic Avenue Delray Beach, Florida 33445

THIS DRAWING IS AN ORIGINAL, UNPUBLISHED DESIGN CREATED BY CLAYTON SIGNS, INC. IT IS NOT TO BE REPRODUCED, CHANGED, OR EXHIBITED TO ANYONE OUTSIDE OF YOUR COMPANY IN WHOLE OR IN PART WITHOUT WRITTEN PERMISSION FROM THE OWNER OF CLAYTON SIGNS, INC. ANY SUCH ACTIONS MAY BE SUBJECT TO LEGAL ACTION IN A COURT OF LAW.  
©2016 ALL RIGHTS RESERVED

LOCATION  
H1/H2



## FLAG SIZES

POLE	A	B	MATERIAL
20'	3'0"	5'0"	POLYESTER
25'	4'0"	6'0"	POLYESTER
30'	5'0"	8'0"	POLYESTER
35'	6'0"	10'0"	POLYESTER
40'	8'0"	12'0"	POLYESTER
45'	8'0"	12'0"	POLYESTER
50'	12'0"	18'0"	POLYESTER

## FOUNDATION SIZES

HEIGHT	A	B	C
20'	3'6"	30"	24"
25'	3'6"	30"	24"
30'	3'6"	30"	24"
35'	4'0"	36"	30"
40'	4'6"	42"	36"
45'	5'0"	48"	42"
50'	5'6"	48"	42"

GROUND SLEEVE AND CONCRETE INSTALLED  
BY THE GENERAL CONTRACTOR  
POLE INSTALLED ON PRE-INSTALLED GROUND  
SLEEVE BY SIGN CONTRACTOR



5198 North Lake Drive  
Lake City, GA 30260  
404.361.3800  
www.claytonsigns.com

### FLAG POLE

DRAWING FILE - CFA - DELRAY BEACH, FL (ATLANTIC & MILITARY) SIGNAGE.CDR

ALL ELECTRICAL  
SIGNS ARE  
120 VOLTS  
UNLESS  
OTHERWISE INDICATED

DRAWN BY Ben Holliday  
ACCOUNT REP. Ben Holliday  
DRAWING DATE July 16, 2015  
REVISION DATE May 7, 2019

STORE NUMBER  
**L03707**

STORE ADDRESS  
Chick-fil-A at Delray Beach, FL (Atlantic)  
West Atlantic Avenue  
Delray Beach, Florida 33445

THIS DRAWING IS AN ORIGINAL, UNPUBLISHED DESIGN CREATED  
BY CLAYTON SIGNS, INC. IT IS NOT TO BE REPRODUCED,  
CHANGED, OR EXHIBITED TO ANYONE OUTSIDE OF YOUR  
COMPANY IN WHOLE OR IN PART WITHOUT WRITTEN PERMISSION  
FROM THE OWNER OF CLAYTON SIGNS, INC. ANY SUCH ACTIONS  
MAY BE SUBJECT TO LEGAL ACTION IN A COURT OF LAW.  
©2016 ALL RIGHTS RESERVED

LOCATION  
**FP**



SPECIFICATIONS

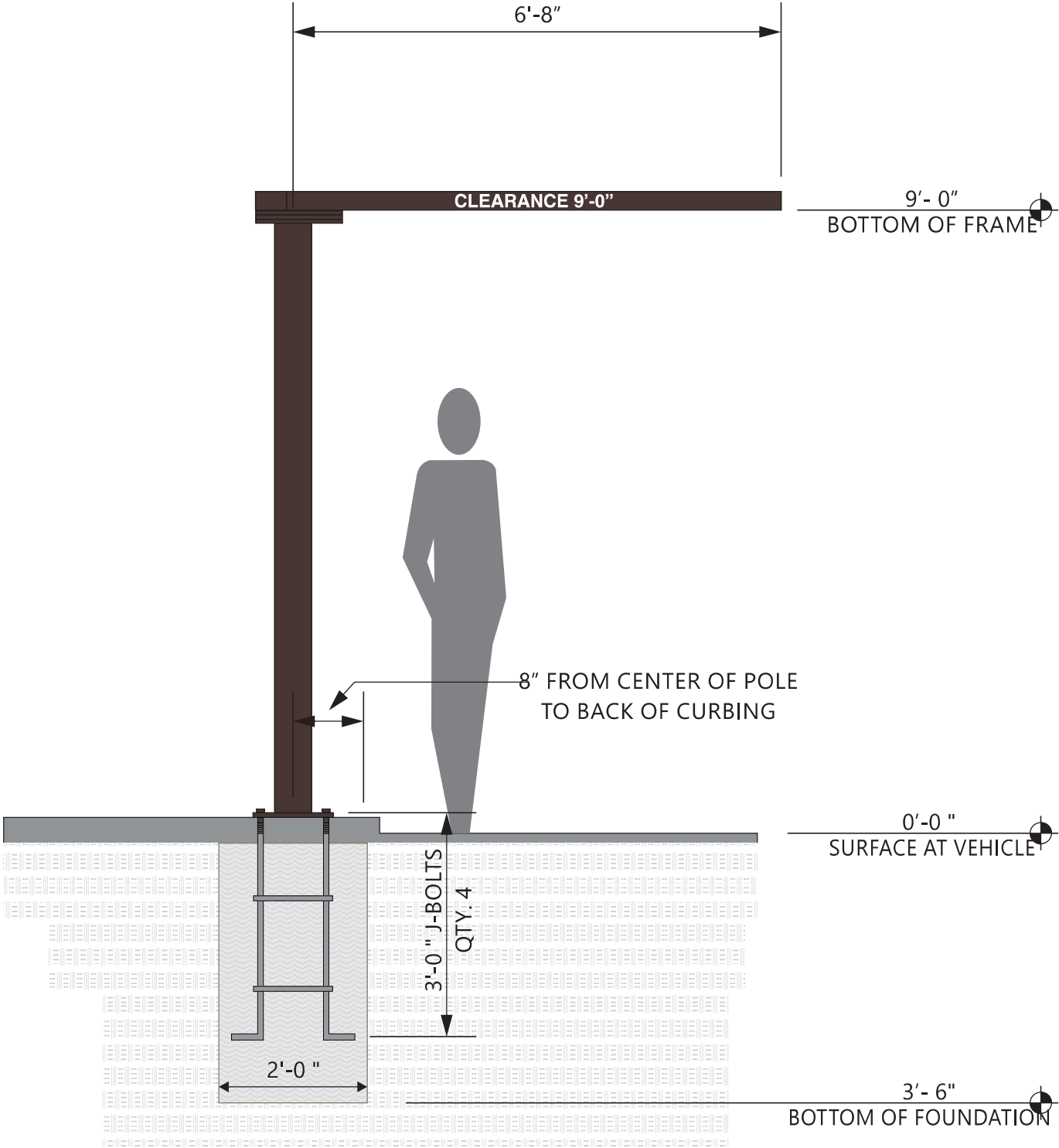
SUPPORT POLE  
POLE HAS 13" x 13" x 3/4" THICK STEEL  
PLATE WITH FOUR(4) 1" DIA. HOLES IN  
EACH CORNER 2" FROM EACH END  
AND FOUR (4) ANCHOR BOLTS



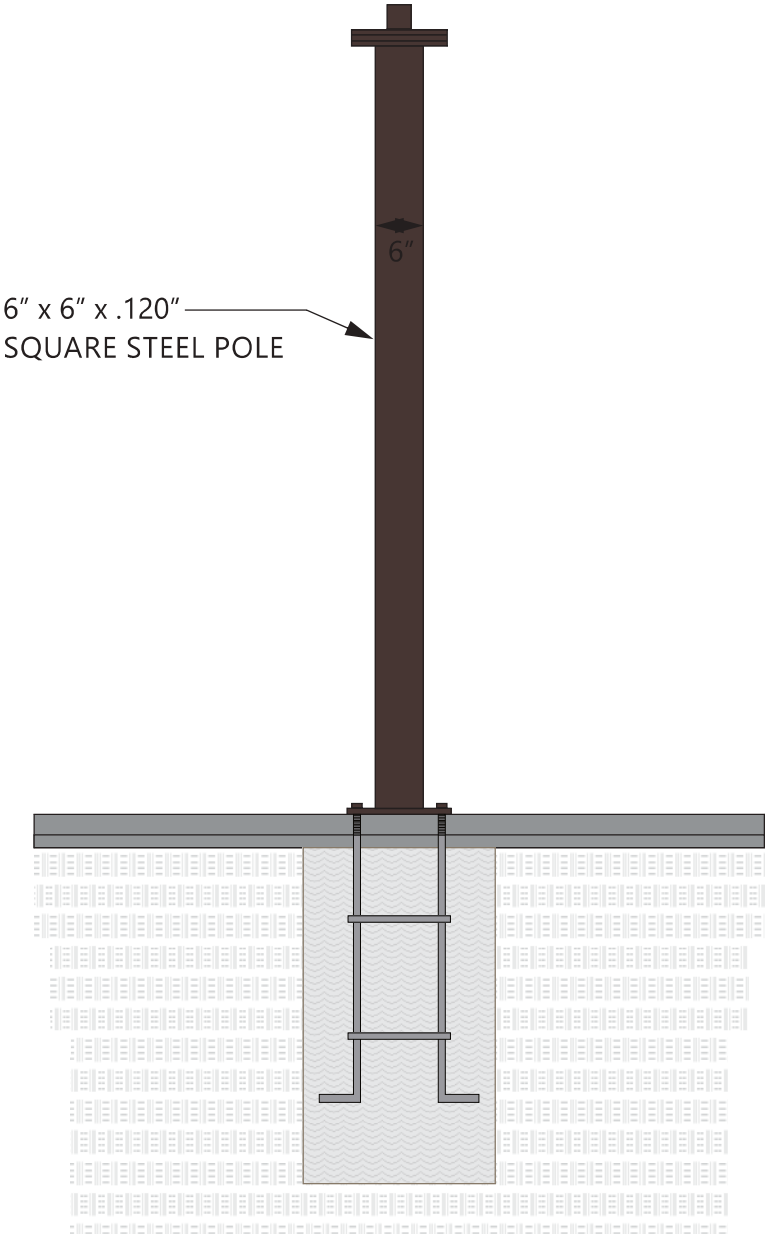
DARK BRONZE



GRAPHICS  
WHITE HIGH PERFORMANCE  
VINYL FILM GRAPHICS



ELEVATION  
SCALE - 1/2" = 1'- 0"



END VIEW  
SCALE - 1/2" = 1'- 0"



5198 North Lake Drive  
Lake City, GA 30260  
404.361.3800  
www.claytonsigns.com

DRIVE-THRU  
CLEARANCE BAR

DRAWING FILE - CFA - DELRAY BEACH, FL (ATLANTIC & MILITARY) SIGNAGE.CDR

ALL ELECTRICAL  
SIGNS ARE  
120 VOLTS  
UNLESS  
OTHERWISE INDICATED

DRAWN BY Ben Holliday  
ACCOUNT REP. Ben Holliday  
DRAWING DATE July 16, 2015  
REVISION DATE May 7, 2019

STORE NUMBER	STORE ADDRESS
L03707	Chick-fil-A at Delray Beach, FL (Atlantic) West Atlantic Avenue Delray Beach, Florida 33445

THIS DRAWING IS AN ORIGINAL, UNPUBLISHED DESIGN CREATED BY CLAYTON SIGNS, INC. IT IS NOT TO BE REPRODUCED, CHANGED, OR EXHIBITED TO ANYONE OUTSIDE OF YOUR COMPANY IN WHOLE OR IN PART WITHOUT WRITTEN PERMISSION FROM THE OWNER OF CLAYTON SIGNS, INC. ANY SUCH ACTIONS MAY BE SUBJECT TO LEGAL ACTION IN A COURT OF LAW.  
©2016 ALL RIGHTS RESERVED

LOCATION  
CB