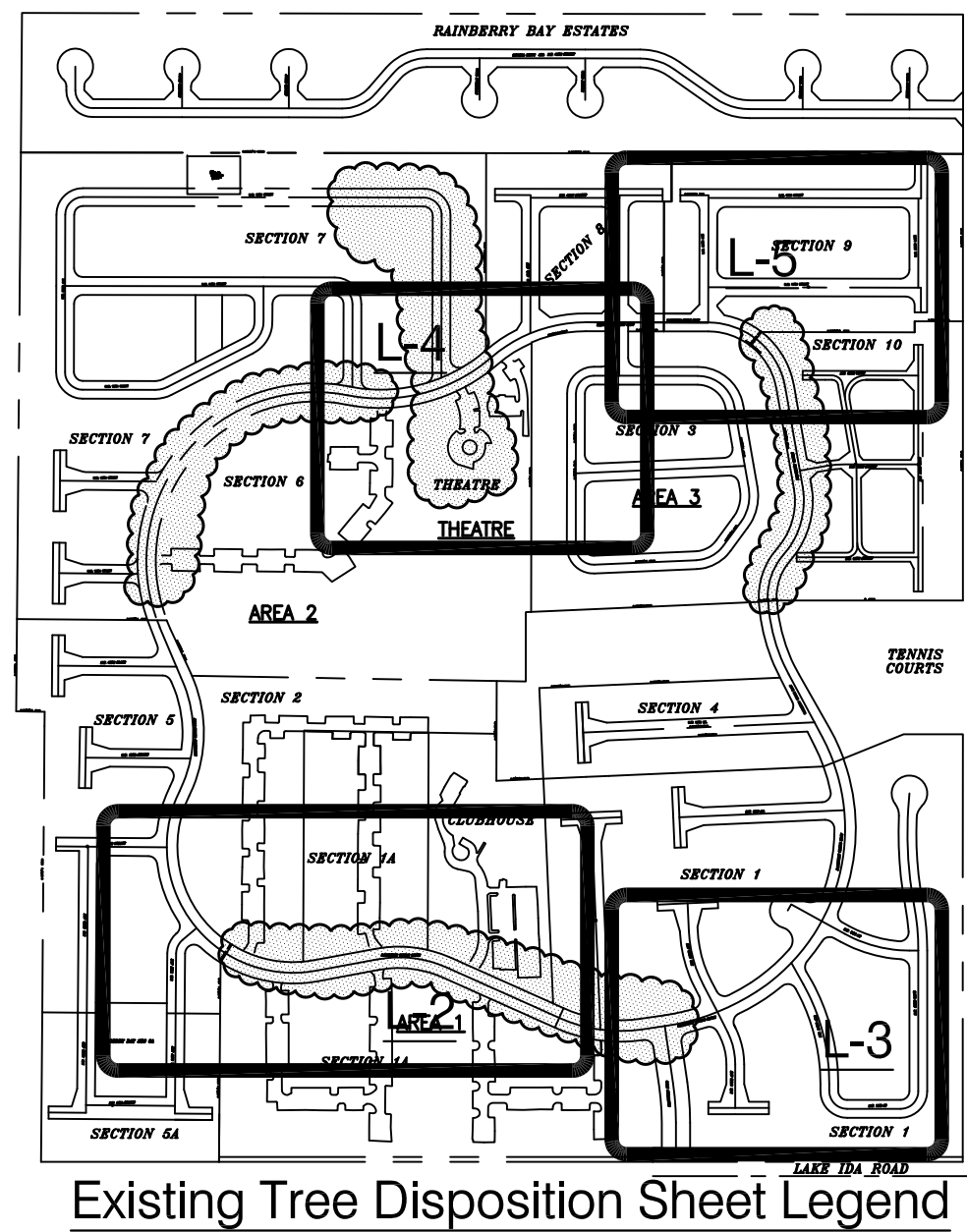


REVISIONS	BY
8/23/23 SPRAB SUBMITTAL SET	
REVISED PER REVISED SITE/CIVIL PLAN DATED 12.20.23	
REVISED 1.23.24 PER REVISED CIVIL BASE PLAN	
REVISED 3.28.24 PER CITY REVIEW	

DESIGNED BY:
CARTER & ASSOCIATES
LANDSCAPE ARCHITECTS INC.
74 N.E. 5th AVE. Delray Beach, FL 33483
L.A. 831
561-272-9621

Landscape for:
Rainberry Bay
Delray Beach, Florida

DRAWN	SKP
CHECKED	D.H.C.
DATE	08.01.2023
SCALE	1" = 40'-0"
JOB NO.	080123
SHEET	
	L-1
OF	9 SHEETS



REMOVAL NOTES:

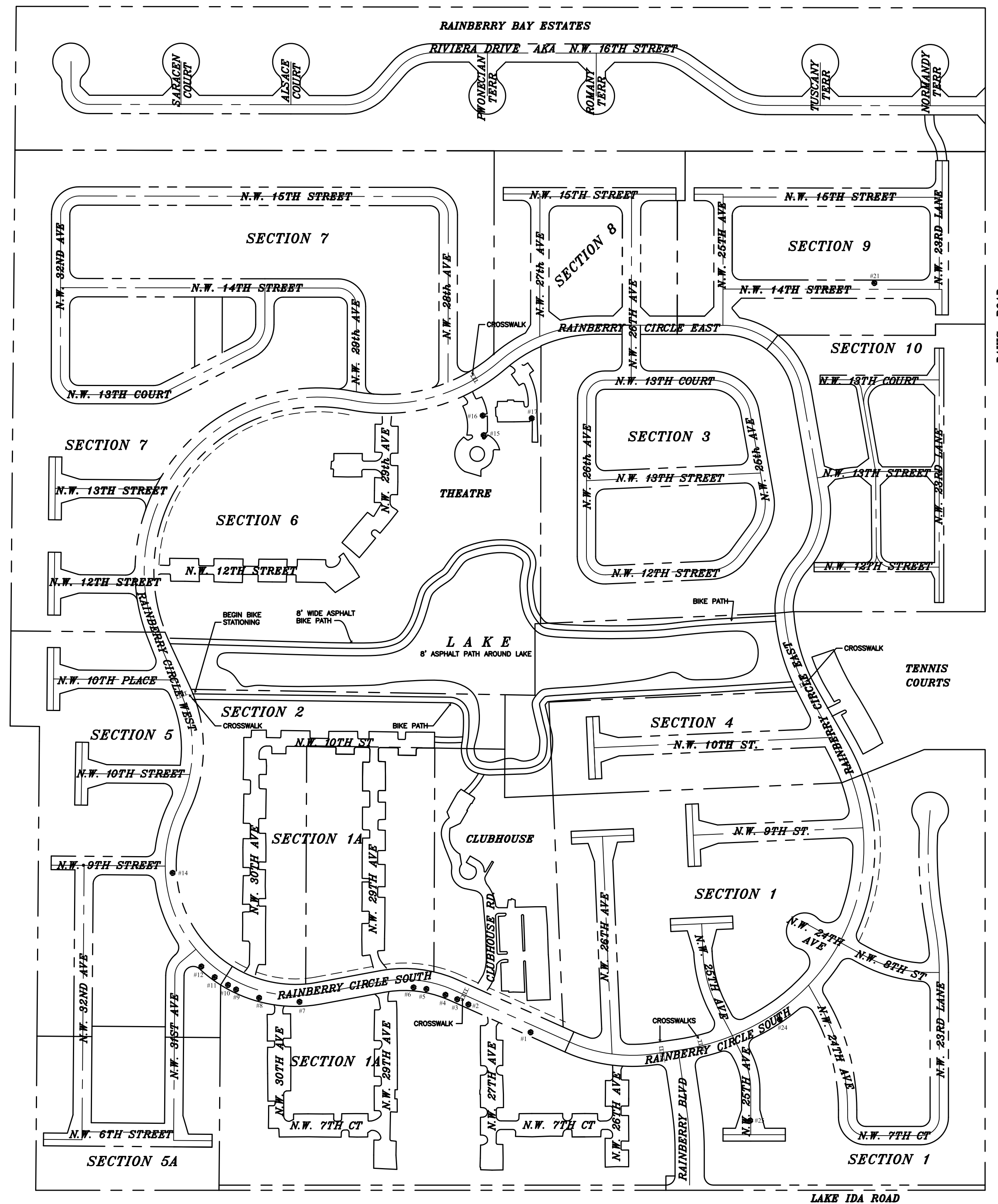
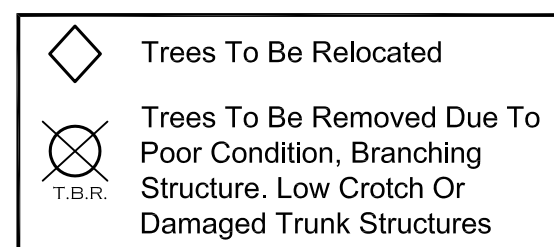
- All tree's to be removed shall be completely removed from the site.
 - The root systems, of the removals, shall be removed in such a manner to facilitate the installation of new tree's, or palms. Root system removal shall be a minimum of 24" depth, and a 6 foot diameter around the trunk.
 - TREE REMOVAL PERMITS WILL BE REQUIRED BY THE GOVERNING MUNICIPALITY, AND IT SHALL BE THE CONTRACTORS RESPONSIBILITY TO OBTAIN ALL NECESSARY PERMITS.
- ALL UNDERGROUND UTILITIES SHALL BE LOCATED PRIOR TO COMMENCING ANY WORK ON THE SITE, PER FLORIDA LAW.

TREE #	COMMON NAME	BOTANICAL NAME	CANOPY HEIGHT (ft)	CANOPY WIDTH (ft)	DIAMETER AT BREAST HEIGHT (in)	HEALTH CONDITION	HEALTH CONDITION RATING %	NOTES	MITIGATION
1	Black Olive	<i>Bucida buceras</i>	40	60	28	POOR	40%	See Arborist Report	1 - Tree
2	Black Olive	<i>Bucida buceras</i>	40	40	25	FAIR	45%	See Arborist Report	1 - Tree
3	Black Olive	<i>Bucida buceras</i>	40	45	22	POOR	40%	See Arborist Report	1 - Tree
4	Black Olive	<i>Bucida buceras</i>	45	52	31	FAIR	60%	See Arborist Report	8 - Trees
5	Black Olive	<i>Bucida buceras</i>	35	40	17	FAIR	45%	See Arborist Report	1 - Tree
6	Black Olive	<i>Bucida buceras</i>	40	50	19	FAIR	45%	See Arborist Report	1 - Tree
7	Black Olive	<i>Bucida buceras</i>	45	60	27	FAIR	45%	See Arborist Report	1 - Tree
8	Black Olive	<i>Bucida buceras</i>	45	48	26	POOR	40%	See Arborist Report	1 - Tree
9	Black Olive	<i>Bucida buceras</i>	40	40	19	FAIR	50%	See Arborist Report	5 - Trees
10	Black Olive	<i>Bucida buceras</i>	40	35	21	FAIR	45%	See Arborist Report	1 - Tree
11	Black Olive	<i>Bucida buceras</i>	45	40	25	POOR	40%	See Arborist Report	1 - Tree
12	Black Olive	<i>Bucida buceras</i>	40	35	23	FAIR	45%	See Arborist Report	1 - Tree
14	Black Olive	<i>Bucida buceras</i>	45	35	26	POOR	35%	See Arborist Report	1 - Tree
15	Black Olive	<i>Bucida buceras</i>	40	40	19	FAIR	50%	See Arborist Report	5 - Trees
16	Black Olive	<i>Bucida buceras</i>	45	35	21	FAIR	55%	See Arborist Report	5 - Trees
17	Black Olive	<i>Bucida buceras</i>	40	40	21	POOR	35%	RECOMMEND REMOVAL ASAP - See Arborist Report	1 - Tree
21	Black Olive	<i>Bucida buceras</i>	45	45	32	FAIR	45%	See Arborist Report	1 - Tree
24	Black Olive	<i>Bucida buceras</i>	40	45	32	FAIR	40%	See Arborist Report	1 - Tree
25	Bishopwood	<i>Bischofia javanica</i>	35	35	29	FAIR	45%	FLEPPC lists it as a Category I invasive species	1 - Tree
Total Mitigation Trees Required:									37 Trees
Total Mitigation Trees Provided:									37 Trees

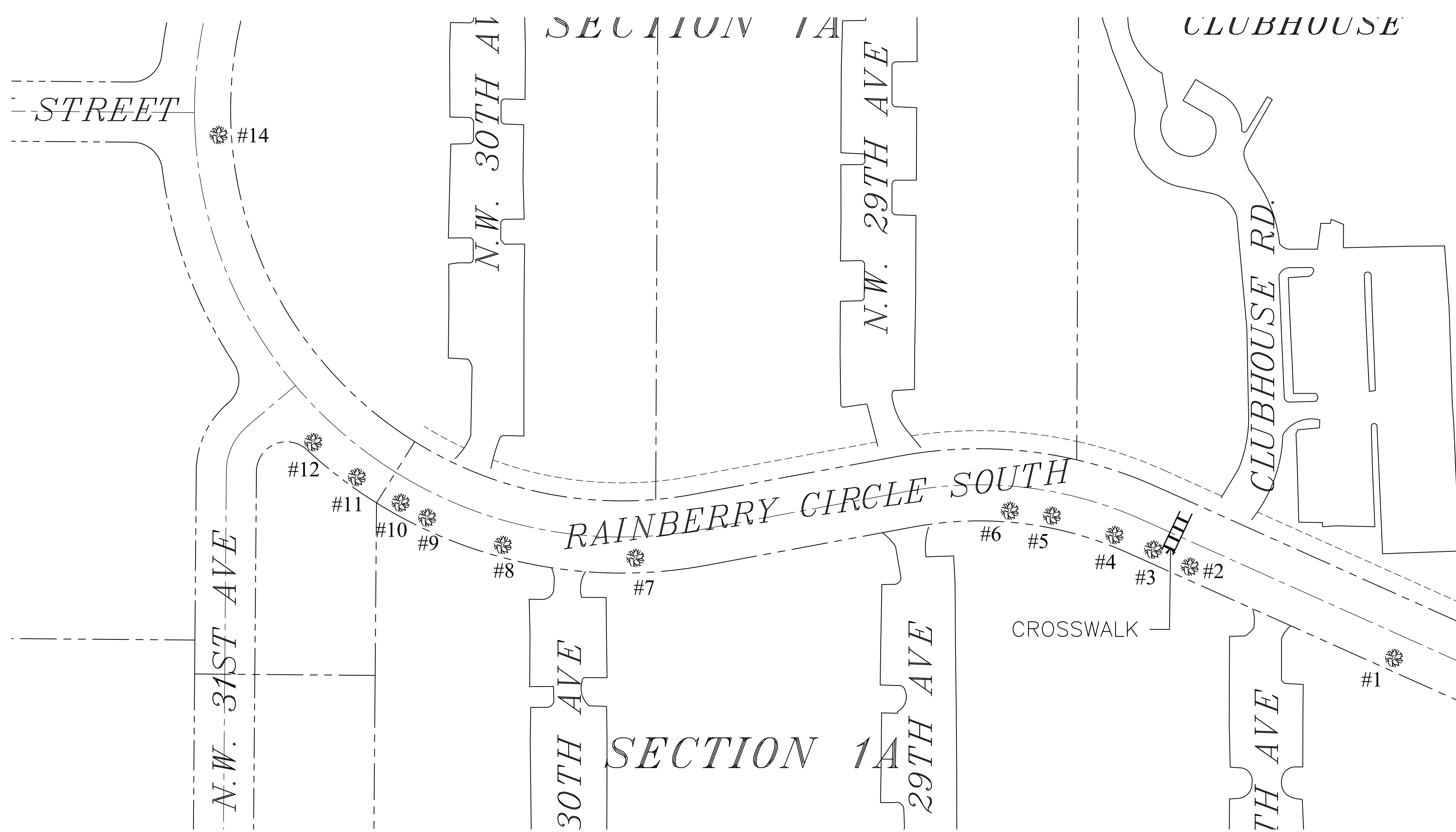
Tree & Palm Health Evaluation & Inventory By Arborist

NOTE:
Remove All Exotic Nuisance Species, Including But Not Limited To (Fl. Holly, Australian Pine, Melaleuca, etc.) Per State and Local Zoning & Landscape Code(s).

NOTE:
All undeveloped portions of a parcel of land shall be left undisturbed or planted with ground cover, or lawn, as to leave no exposed soils in order to prevent dust or soil erosion, as per ULDR 47-21.9.M



Overall Street Plan / Existing Tree Disposition Plan



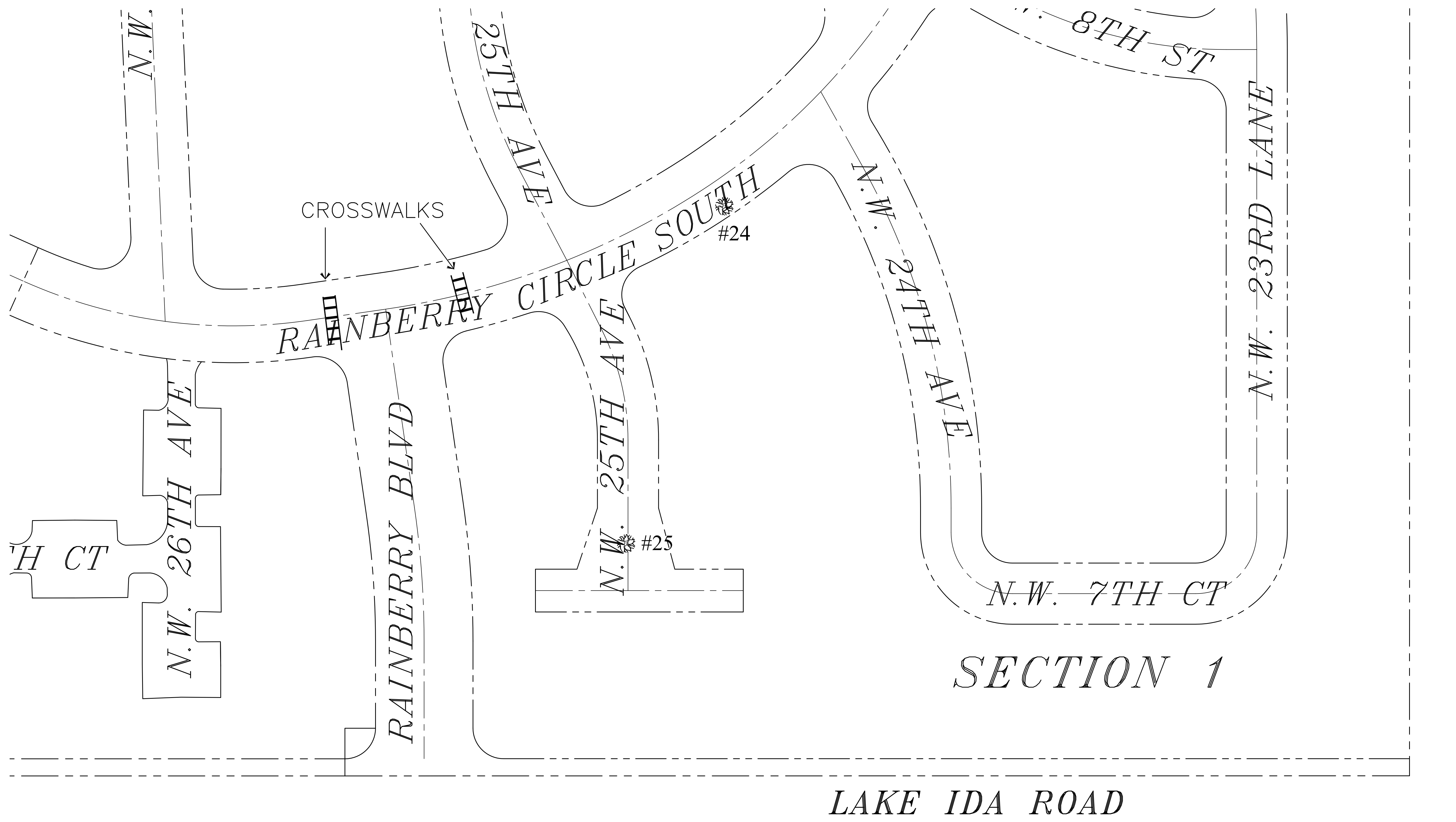
Existing Tree Disposition Plan "A"

REVISIONS	BY
8/23/23 SPRAB SUBMITTAL SET	
REVISED PER REVISION SITE/CIVIL PLAN DATED 12.20.23	
REVISED 1.23.24 PER REVISION CIVIL BASE PLAN	
REVISED 3.28.24 PER CITY REVIEW	

DESIGNED BY:
CARTER & ASSOCIATES
LANDSCAPE ARCHITECTS INC.
 74 N.E. 5th AVE. Delray Beach, FL 33483
 LA. 831
 561-272-9621

Landscape for:
Rainberry Bay
 Delray Beach, Florida

DRAWN	SKP
CHECKED	D.H.C.
DATE	08.01.2023
SCALE	1" = 40'-0"
JOB NO.	080123
SHEET	



SECTION 1

LAKE IDA ROAD

Existing Tree Disposition Plan "B"

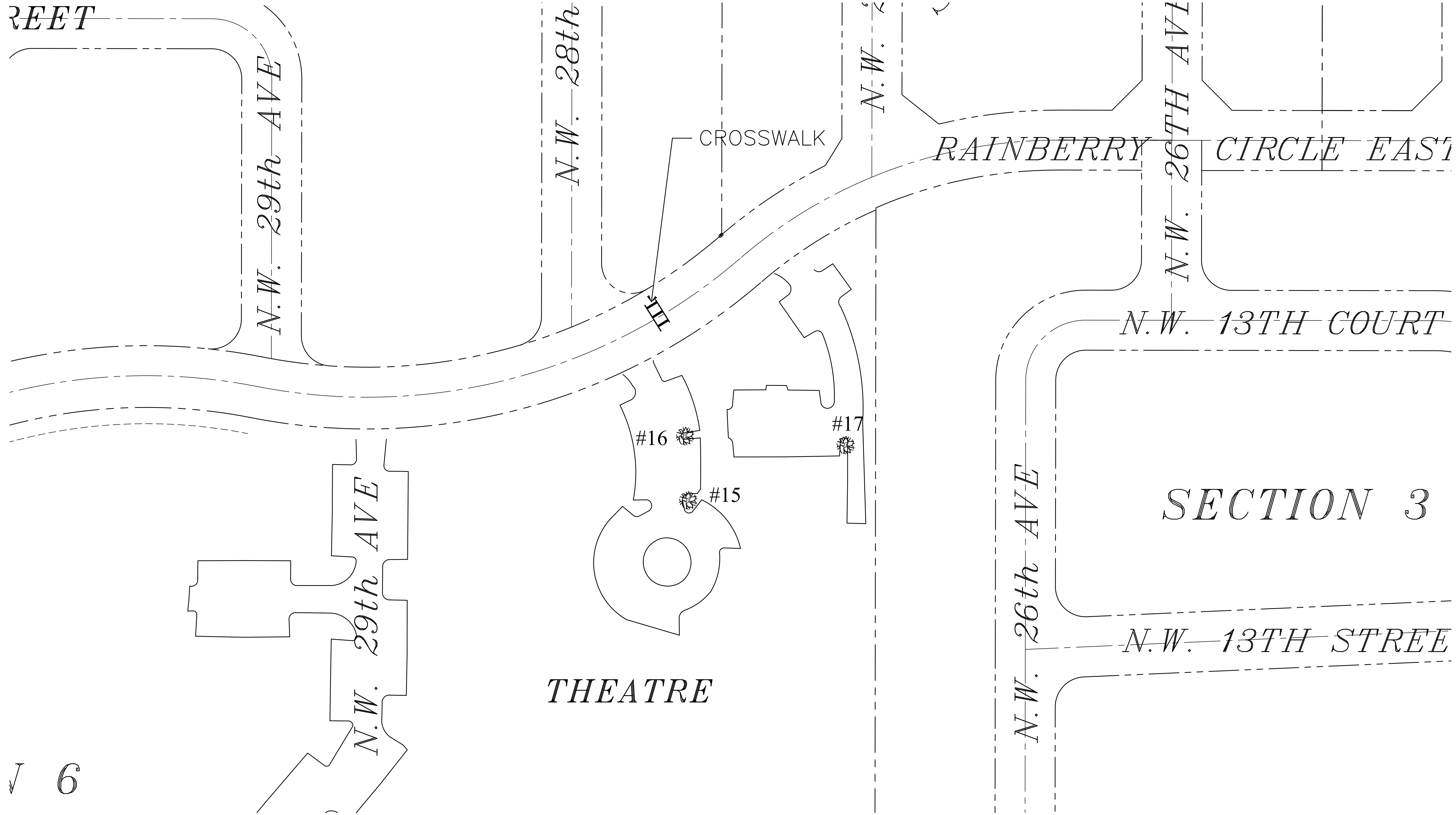
REVISIONS	BY
8/23/23 SPRAB SUBMITAL SET	
REVISED PER REVISOR SITE/CIVIL PLAN DATED 12.20.23	
REVISED 1.23.24 PER REVISOR CIVIL BASE PLAN	
REVISED 3.28.24 PER CITY REVIEW	

DESIGNED BY:
CARTER & ASSOCIATES
LANDSCAPE ARCHITECTS INC.
 74 N.E. 5th AVE. Delray Beach, FL 33483
 LA. 831
 561-272-9621

Landscape for:
Rainberry Bay
 Delray Beach, Florida

DRAWN	SKP
CHECKED	D.H.C.
DATE	08.01.2023
SCALE	1" = 40'-0"
JOB NO.	080123
SHEET	

HEET



6

THEATRE

CROSSWALK

RAINBERRY CIRCLE EAST

N.W. 13TH COURT

SECTION 3

N.W. 13TH STREET

N.W. 26th AVE

N.W. 29th AVE

N.W. 28th

N.W.

N.W. 26TH AVE

N.W. 29th AVE

#16

#15

#17

REVISIONS	BY
8/23/23 SPRAB SUBMITTAL SET	
REVISED PER SITE/CIVIL PLAN DATED 12.20.23	
REVISED 1.23.24 PER REVISED CIVIL BASE PLAN	
REVISED 3.28.24 PER CITY REVIEW	

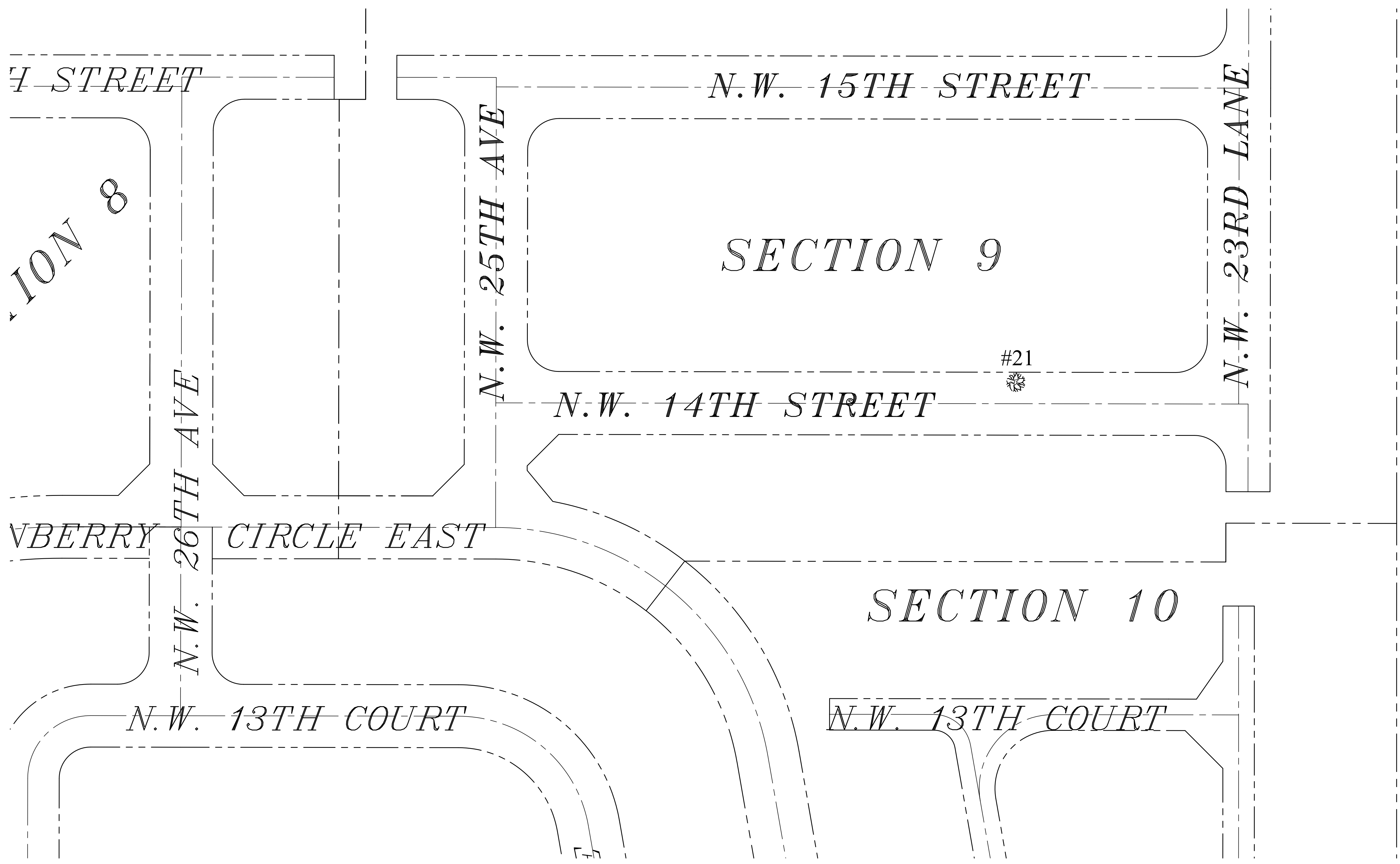
DESIGNED BY:
CARTER & ASSOCIATES
LANDSCAPE ARCHITECTS INC.
 74 N.E. 5th AVE. Delray Beach, FL 33483
 LA. 831
 561-272-9621

Landscape for:
Rainberry Bay
 Delray Beach, Florida

DRAWN	SKP
CHECKED	D.H.C.
DATE	08.01.2023
SCALE	1" = 40'-0"
JOB NO.	080123
SHEET	

Existing Tree Disposition Plan "C"

L-4
 OF 9 SHEETS



REVISIONS	BY
8/23/23 SPRAB SUBMITTAL SET	
REVISED PER REVISION SITE/CIVIL PLAN DATED 12.20.23	
REVISED 1.23.24 PER REVISION CIVIL BASE PLAN	
REVISED 3.28.24 PER CITY REVIEW	

DESIGNED BY:
**CARTER & ASSOCIATES
 LANDSCAPE ARCHITECTS INC.**
 74 N.E. 5th AVE. Delray Beach, FL 33483
 LA. 831
 561-272-9621

Landscape for:
Rainberry Bay
 Delray Beach, Florida

DRAWN SKP
CHECKED D.H.C.
DATE 08.01.2023
SCALE 1" = 40'-0"
JOB NO. 080123
SHEET

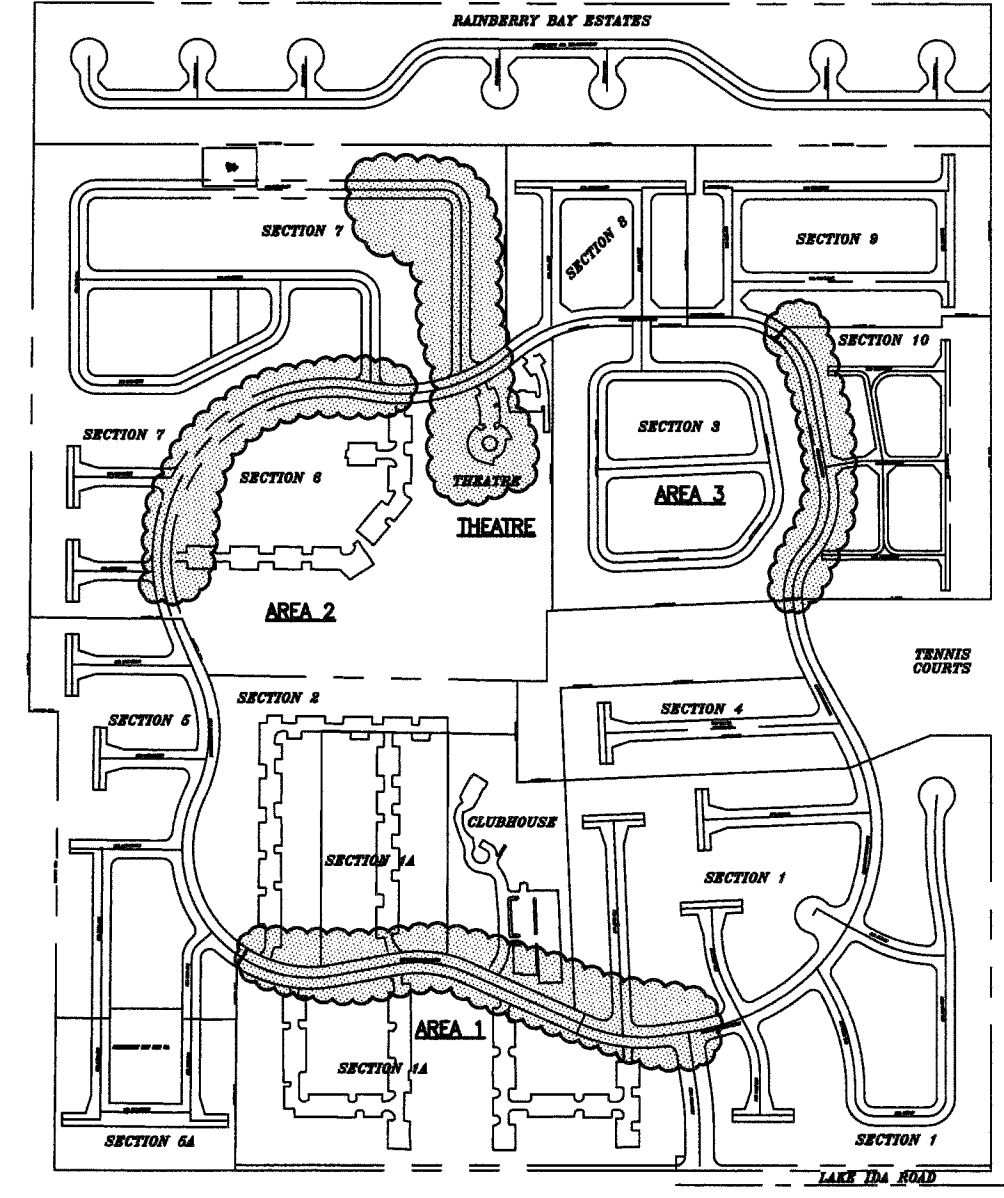
Existing Tree Disposition Plan "D"

REVISIONS	BY
8/23/23 SPRAB	
SUBMITTAL SET	
REVISED PER REVISED SITE/CIVIL PLAN DATED 12.20.23	
REVISED 1.23.24 PER REVISED CIVIL BASE PLAN	
REVISED 3.28.24 PER CITY REVIEW	
REVISED 4.30.24 PER CITY CMMNTS (Cat Lit)	DC

DESIGNED BY:
CARTER & ASSOCIATES
LANDSCAPE ARCHITECTS INC.
 74 N.E. 5th Ave. Delray Beach, FL 33483
 LA. 831
 561-272-9621

Landscape for:
Rainberry Bay
 Delray Beach, Florida

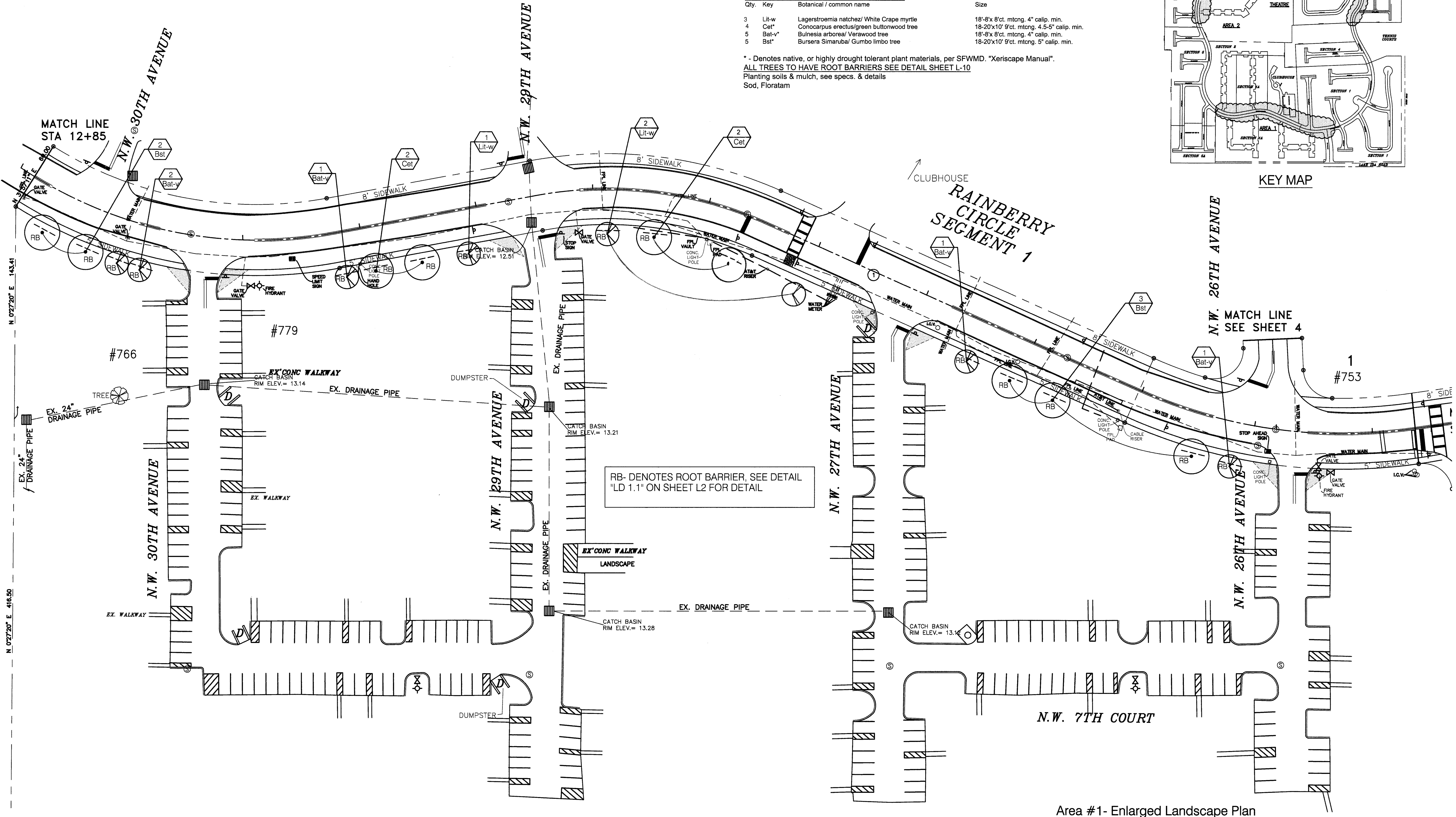
DRAWN	SKP
CHECKED	D.H.C.
DATE	08.01.2023
SCALE	1" = 40'-0"
JOB NO.	080123
SHEET	
L-6	
OF	9 SHEETS



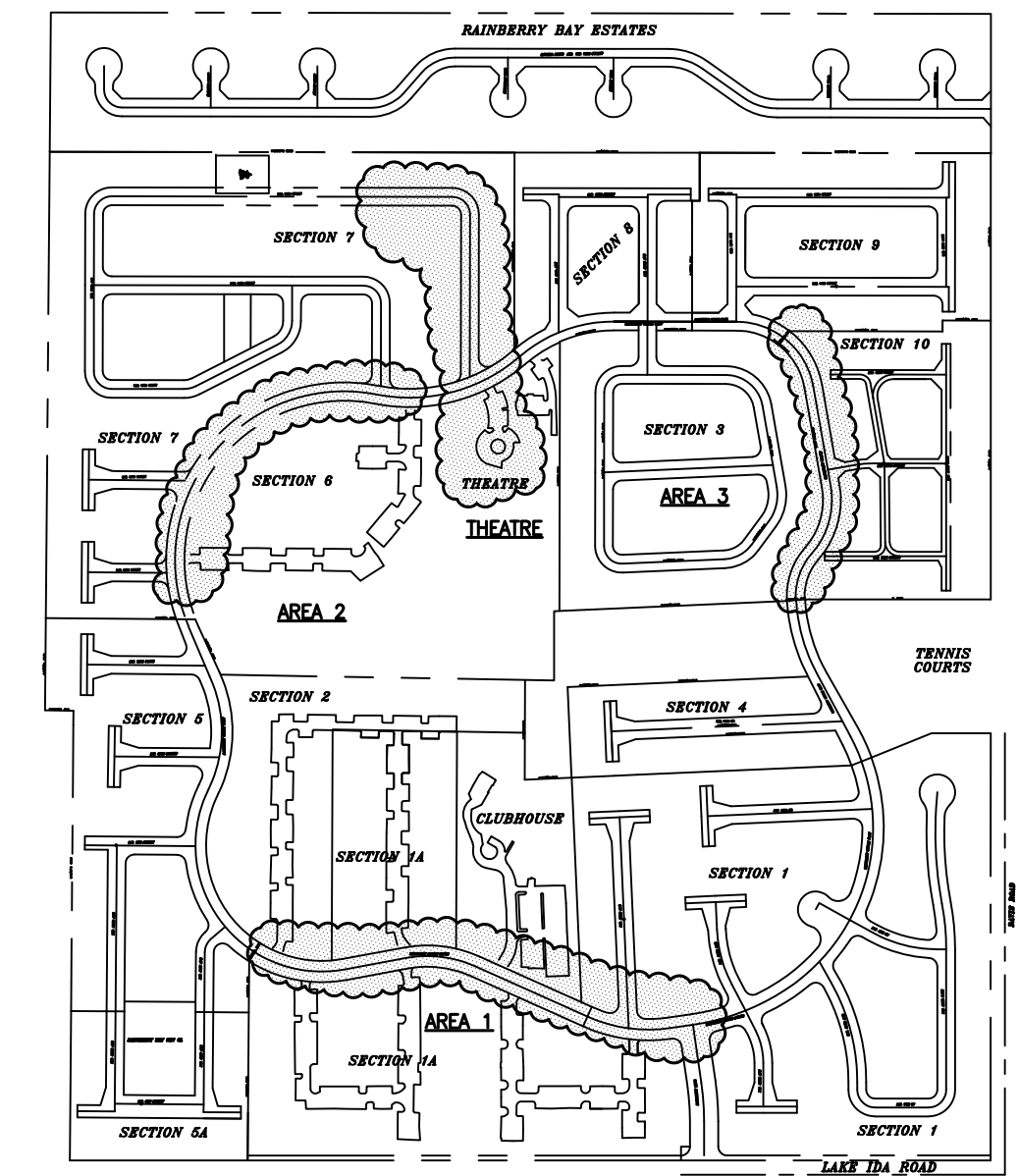
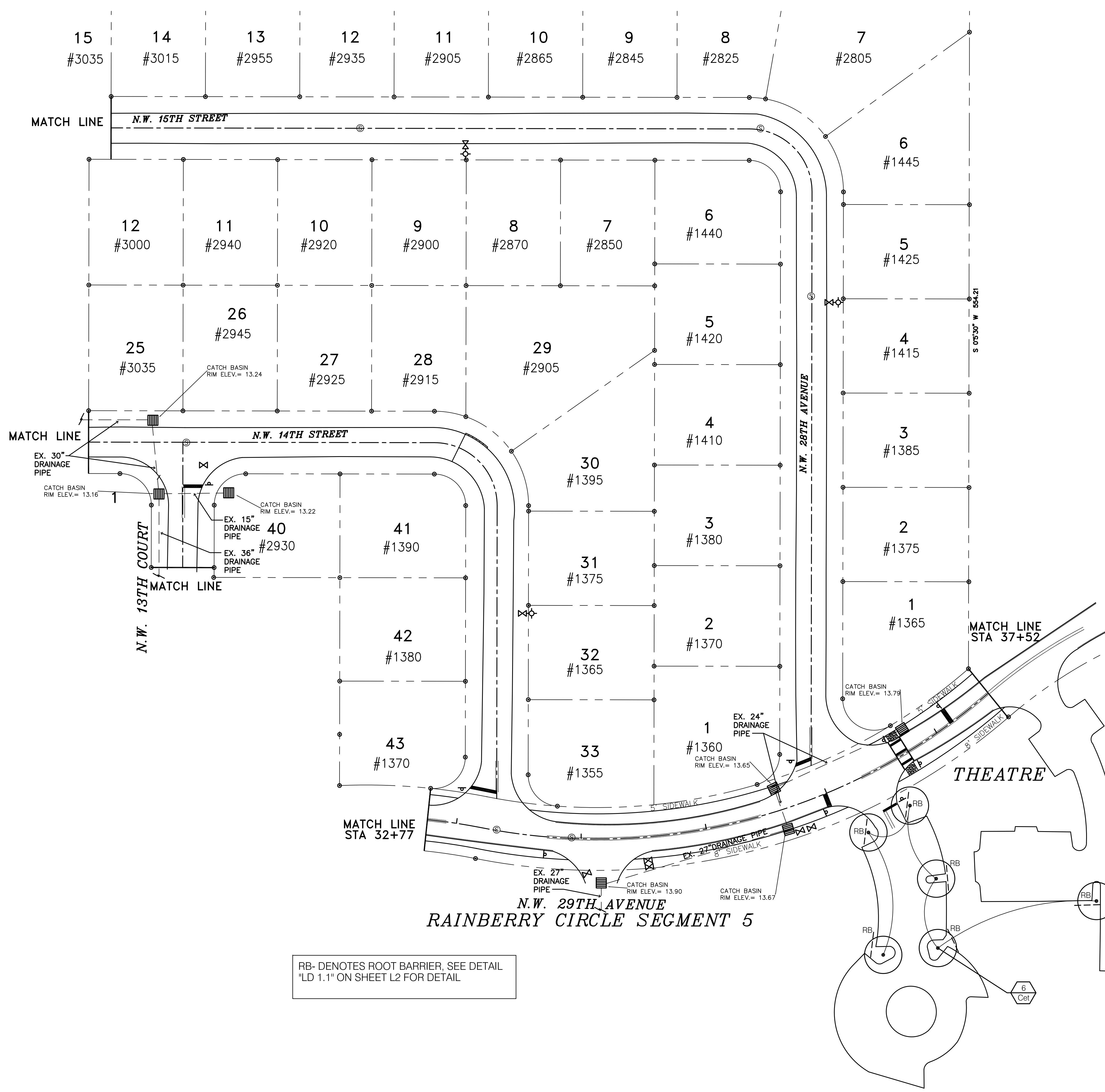
AREA 1- MATERIAL SCHEDULE-TREES & PALMS

Qty.	Key	Botanical / common name	Size
3	Lit-w	Lagerstroemia natchez/ White Crape myrtle	18'-8"x 8'ct. mtong. 4" calip. min.
4	Cet*	Conocarpus erectus/green buttonwood tree	18'-20"x10' 9'ct. mtong. 4.5-5" calip. min.
5	Bat-v*	Bulnesia arborea/ Vervewood tree	18'-9"x 8'ct. mtong. 4" calip. min.
5	Bst*	Bursera Simaruba/ Gumbo limbo tree	18'-20"x10' 9'ct. mtong. 5" calip. min.

* - Denotes native, or highly drought tolerant plant materials, per SFWMD. "Xeriscape Manual".
 ALL TREES TO HAVE ROOT BARRIERS SEE DETAIL SHEET L-10
 Planting soils & mulch, see specs. & details
 Sod, Floratam



Area #1- Enlarged Landscape Plan



KEY MAP

THEATRE AREA-MATERIAL SCHEDULE-TREES & PALMS

Qty.	Key	Botanical / common name	Size
6	Lil-w	Lagerstroemia natchez/ White Crape myrtle	18'-8"x 8'ct. mtng. 4" calip. min.
14	Cet*	Conocarpus erectus/green buttonwood tree	18-20'x10' 9'ct. mtng. 4.5-5" calip. min.
10	Bal-v*	Bulnesia arborea/ Verawood tree	18'-8"x 8'ct. mtng. 4" calip. min.
9	Bst*	Bursera Simaruba/ Gumbo limbo tree	18-20'x10' 9'ct. mtng. 5" calip. min.

* - Denotes native, or highly drought tolerant plant materials, per SFWMD. "Xeriscape Manual".
ALL TREES TO HAVE ROOT BARRIERS SEE DETAIL SHEET L-10
 Planting soils & mulch, see specs. & details
 Sod, Floratam

RB- DENOTES ROOT BARRIER, SEE DETAIL "LD 1.1" ON SHEET L2 FOR DETAIL

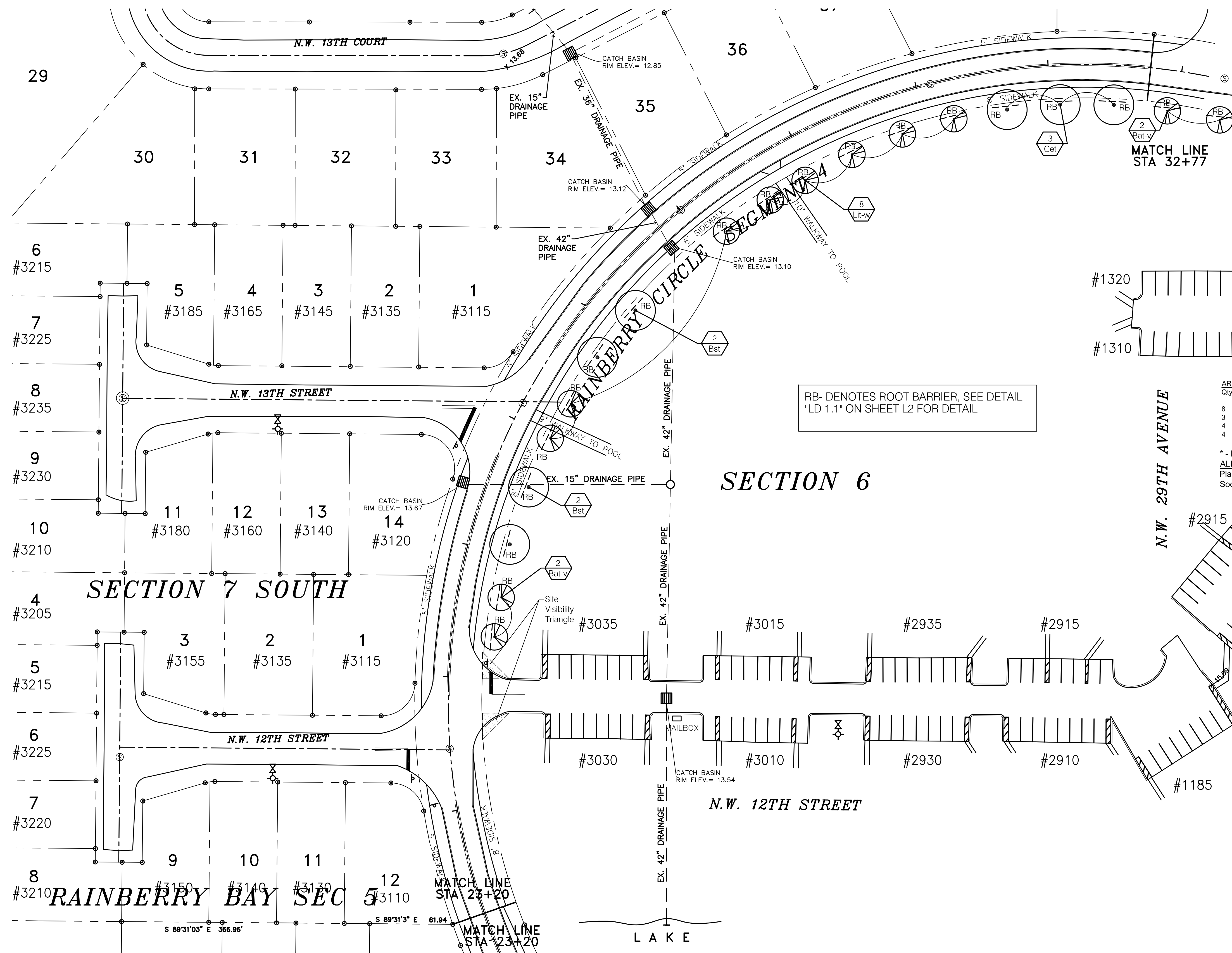
Theatre Area - Enlarged Landscape Plan

REVISIONS	BY
8/23/23 SPRAB SUBMITTAL SET	
REVISED PER REVISED SITE/CIVIL PLAN DATED 12.20.23	
REVISED 1.23.24 PER REVISED CIVIL BASE PLAN	
REVISED 3.28.24 PER CITY REVIEW	

DESIGNED BY:
CARTER & ASSOCIATES
LANDSCAPE ARCHITECTS INC.
 74 N.E. 5th AVE. Delray Beach, FL 33483
 LA. 831
 561-272-9621

Landscape for:
Rainberry Bay
 Delray Beach, Florida

DRAWN	SKP
CHECKED	D.H.C.
DATE	08.01.2023
SCALE	1" = 40'-0"
JOB NO.	080123
SHEET	

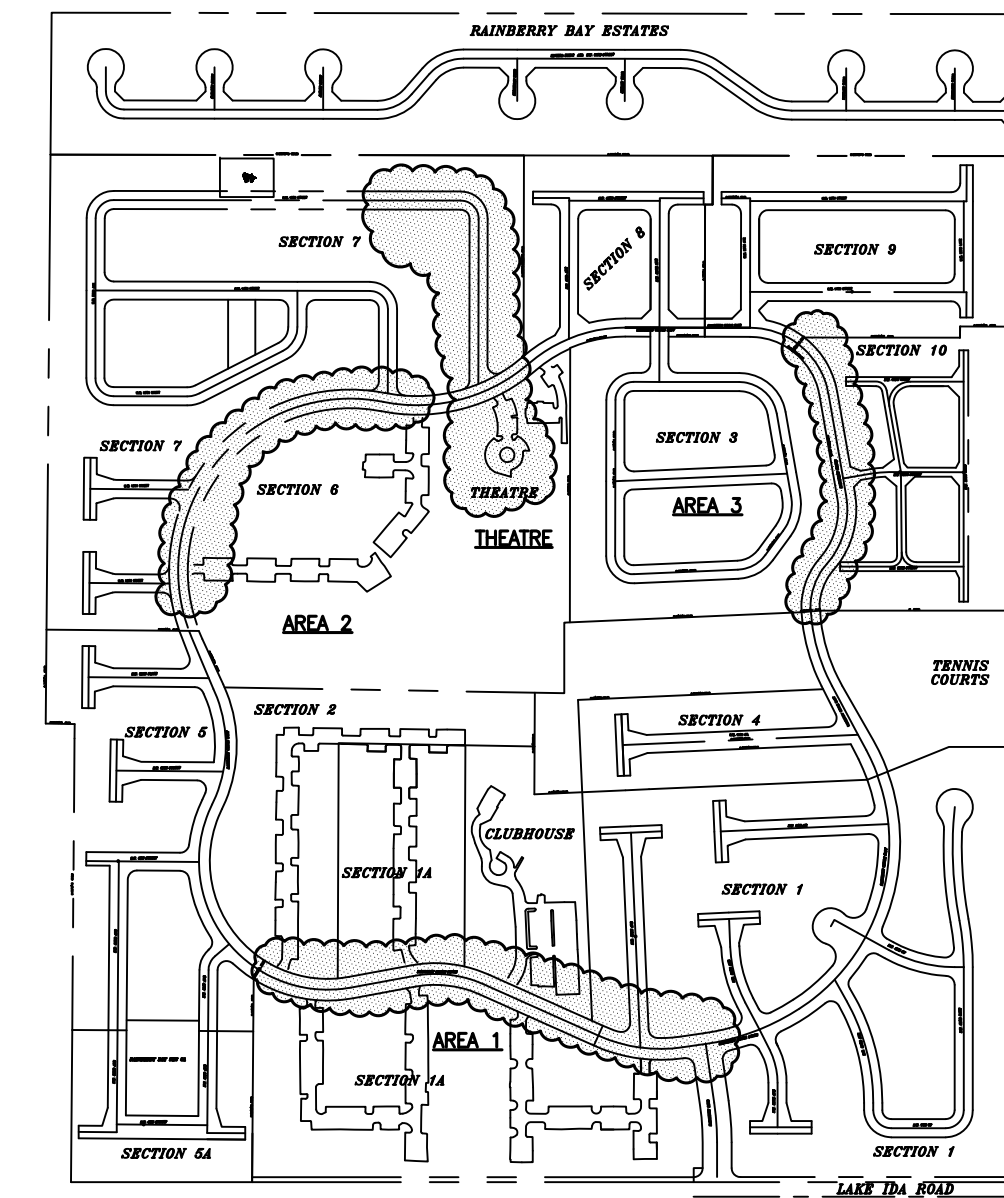


RB- DENOTES ROOT BARRIER, SEE DETAIL "LD 1.1" ON SHEET L2 FOR DETAIL.

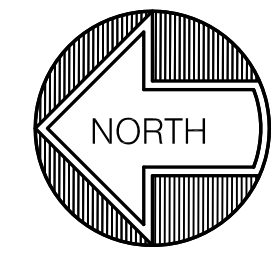
AREA 2-MATERIAL SCHEDULE-TREES & PALMS

Qty.	Key	Botanical / common name	Size
8	Lit-w	Lagerstroemia natchez/ White Crape myrtle	18'-8" x 8'ct. mtng. 4" calip. min.
3	Cet*	Conocarpus erectus/green buttonwood tree	18'-20" x 10' 9'ct. mtng. 4.5-5" calip. min.
4	Bat-v*	Bulnesia arborea/ Verawood tree	18'-8" x 8'ct. mtng. 4" calip. min.
4	Bst*	Bursera Simaruba/ Gumbo limbo tree	18'-20" x 10' 9'ct. mtng. 5" calip. min.

* - Denotes native, or highly drought tolerant plant materials, per SFWMD, "Xeriscape Manual".
 ALL TREES TO HAVE ROOT BARRIERS SEE DETAIL SHEET L-10
 Planting soils & mulch, see specs. & details
 Sod, Floratam



KEY MAP



Area #2- Enlarged Landscape Plan

REVISIONS	BY
8/23/23 SPRAB SUBMITTAL SET	
REVISED PER REVISED SITE/CIVIL PLAN DATED 12.20.23	
REVISED 1.23.24 PER REVISED CIVIL BASE PLAN	
REVISED 3.28.24 PER CITY REVIEW	
REVISED 4.13.24 PER C.E. COMMENTS	

DESIGNED BY:
CARTER & ASSOCIATES
LANDSCAPE ARCHITECTS INC.
 74 N.E. 5th AVE. Delray Beach, FL 33483
 LA. 831

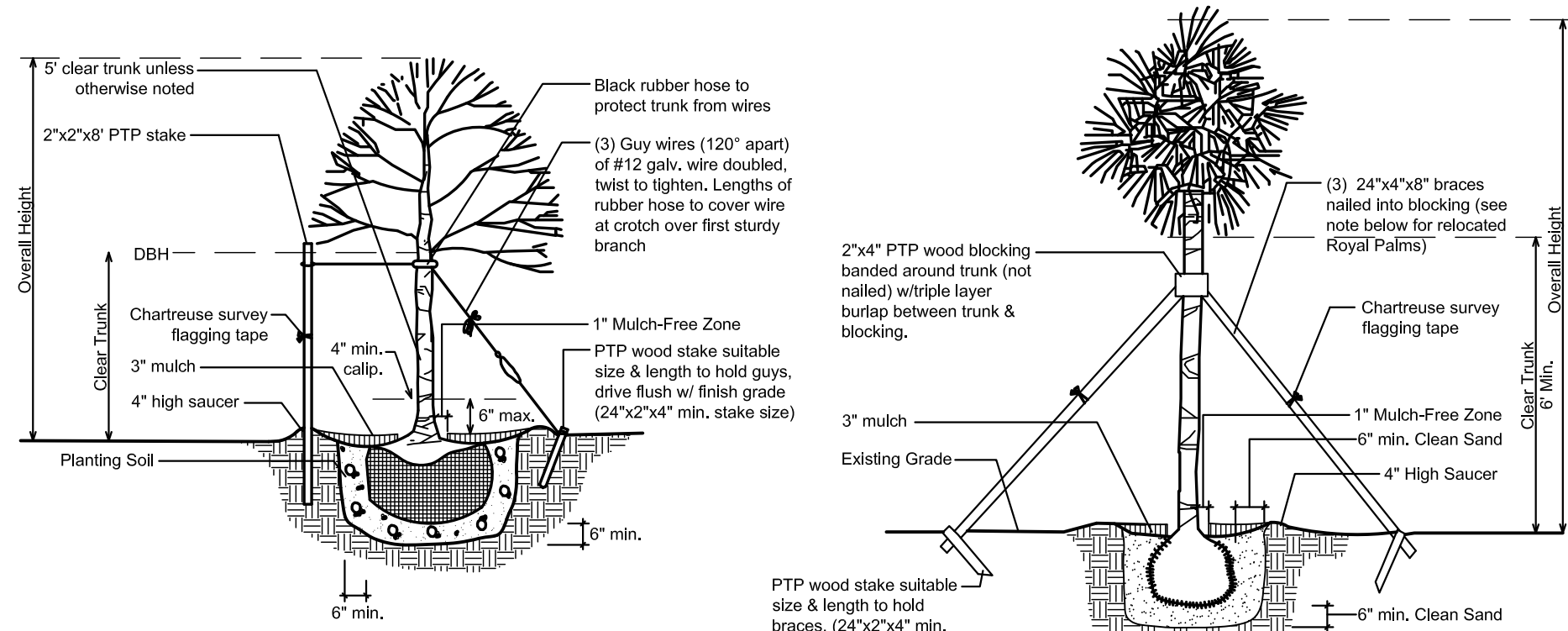
Landscape for:
Rainberry Bay
 Delray Beach, Florida

DRAWN	SKP
CHECKED	D.H.C.
DATE	08.01.2023
SCALE	1" = 40'-0"
JOB NO.	080123
SHEET	

L-8

GENERAL LANDSCAPE NOTES:

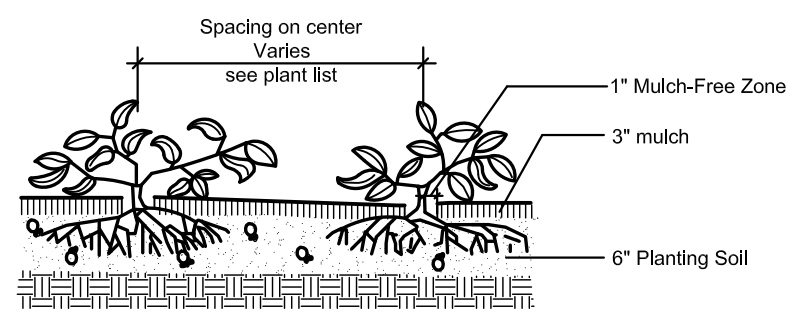
- All plant material shall be F1, #1, or better, as per the latest addition of F1, Grades & standards. All "specimen" quality materials shall be F, Fancy, and shall be pre-approved by the Landscape Architect.
- All plant materials shall be true to name & size, as per F1, Grades & Standards. Plant materials which do not meet, or exceed these standards will not be accepted.
- Quantities, sizes, and locations of plants will be determined by the plan and material schedule. Sizes of the specified plants shall take precedence over the container size. Spacing of the ground covers will be determined by the material schedule. Quantities shown on the material schedule are to be used as a guideline. The landscape contractor shall be responsible for the actual quantities shown on the plan. The plans will take precedence over the material schedule. Discrepancies shall be brought to the attention of the Landscape Architect, prior to commencing.
- No substitutions shall be accepted without the Landscape Architect's written approval. All substitution requests shall be made in writing.
- Planting soils shall be clean, sterile, and free of debris. Soil shall consist of 50% Fl. muck % 50% clean sand. Tree's shall be installed with a minimum of 12" on sides & bottom of root balls. Shrubs, plants & ground covers shall be installed with a minimum of 6" on sides & bottom of root balls. Rooted cuttings shall be installed with a minimum of 4" of planting soils worked into the top 6" of the existing soils. Sabal palms and Phoenix specie shall be installed with a clean well drained sand.
- Milargantite, or equal, fertilizer shall be applied to all plantings, per manufactures recommendations. In addition, "Agriform" tablets (20-10-5) shall also be applied to all plants 1 gal., and above, per manufactures recommendations.
- All tree's & palms shall be mulched with arsenic free mulch with a 3ft. diameter circle. 3" minimum depth. All planting beds shall receive 3" finished depth, mulch upon completion of planting process. Mulch shall "Eucalyptus", or approved equal. NO CYPRESS MULCH SHALL BE UTILIZED ON THE PROJECT.
- All plants shall be planted at soil levels which they were previously grown. Shrubs and hedges are to be planted 2ft. away from any wall, or structures. Materials with a six greater than overhangs shall be planted so as not to impede the natural growth habit of the plant.
- All materials are to be watered-in immediately after planting, so as to remove all air pockets. BIB materials are to be hand-watered for a minimum of 1 week after installation, and there-after as required. Contractor shall advise the owner of any additional hand-watering requirements.
- All tree's 8ft., or larger, are to be staked, or guyed, to provide ample support such that materials remain straight & true in an up-right position through the guarantee period. Staking & guying shall be performed at the option of the landscape contractor, except where required by code. However, the landscape contractor shall be responsible for all tree's & palms remaining straight & true through the guarantee period. In the event that a material shifts after it has been properly staked, or guyed, the landscape contractor shall not be held responsible.
- All sod shall be "Floratom", unless otherwise specified. Sod shall be dense, green, well-rooted, and free of debris, weeds, disease, or insects. A complete 6-6-6 fertilizer shall be applied at a rate of 10lbs. per 1,000sq. ft. Sod is to be watered to a depth of 3" immediately after installation. Grades are to be raked smooth, and all debris removed, prior to installation.
- All tree's, palms, plants & ground-covers shall be guaranteed for a period of 360 days, after the date of substantial completion. Phoenix canariensis & dactylifera palms are to be maintained, per growers/suppliers recommendations, by a qualified person, or firm. Said maintenance program shall be the responsibility of the owner. The landscape invoice will be deemed as rejection of the plant materials. The landscape contractor shall remove any, or all of the rejected materials from the site as their discretion.
- The removal of "base rock" is not included in the landscape contract.
- All grades are to be within 2" of finished grades, prior to the landscape contractor commencing work.



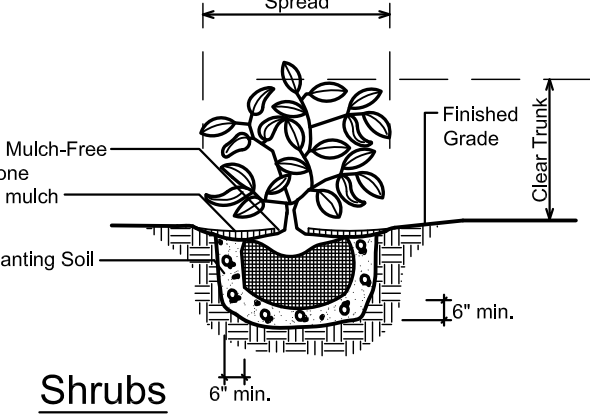
NOTE: Stake all trees up to 2" cal. @ 2 per tree. Guy all trees larger than 2" cal. Pull butrap from top of root ball. Remove all non-biodegradable materials such as wire, twine, etc. on rootball.

Trees

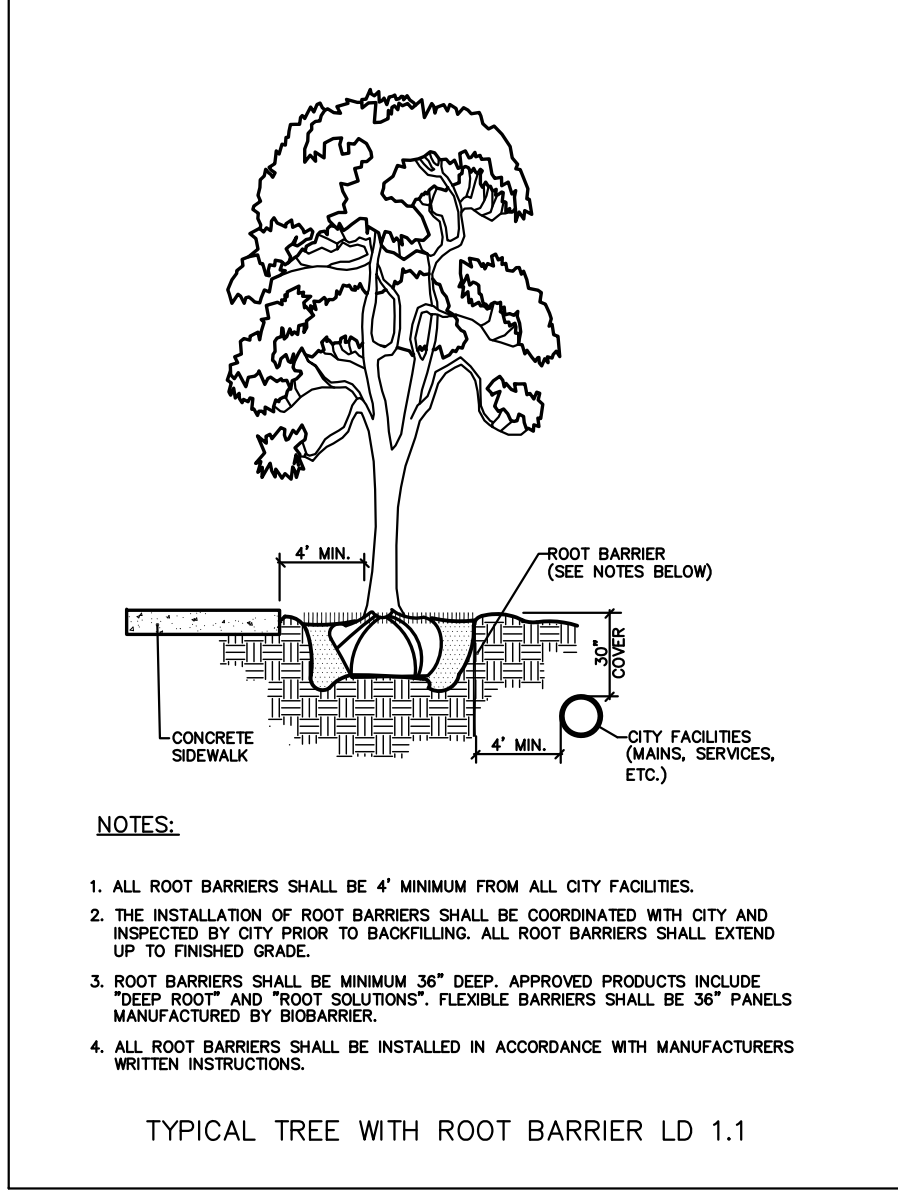
Straight Trunk Palms



Groundcovers



Shrubs



Any Trees or shrubs placed within water, sewer or drainage easements shall conform to Details L.D. 1.1 requirements. RB: Denotes Root Barrier

AREA 1- MATERIAL SCHEDULE-TREES & PALMS

Qty.	Key	Botanical / common name	Size
2	Lit-w	Lagerstroemia natchez/ White Crape myrtle	18'-8x 8'ct. mtng. 4" calip. min.
3	Cet*	Conocarpus erectus/green buttonwood tree	18-20'x10' 9'ct. mtng. 4.5-5" calip. min.
5	Bat-v*	Bulnesia arborea/ Verawood tree	18'-8x 8'ct. mtng. 4" calip. min.
4	Bst*	Bursera Simaruba/ Gumbo limbo tree	18-20'x10' 9'ct. mtng. 5" calip. min.

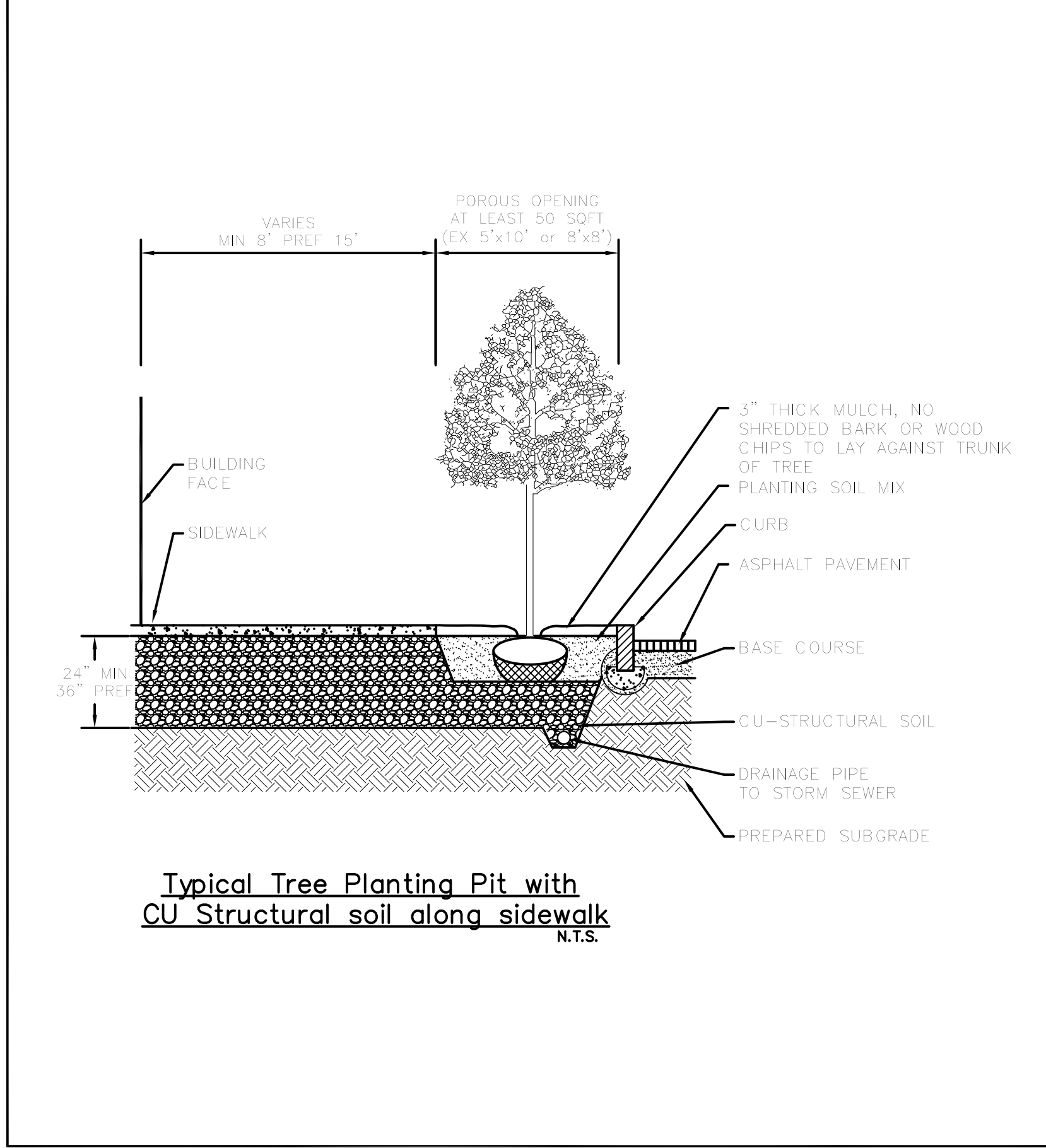
AREA 2-MATERIAL SCHEDULE-TREES & PALMS

Qty.	Key	Botanical / common name	Size
8	Lit-w	Lagerstroemia natchez/ White Crape myrtle	18'-8x 8'ct. mtng. 4" calip. min.
3	Cet*	Conocarpus erectus/green buttonwood tree	18-20'x10' 9'ct. mtng. 4.5-5" calip. min.
4	Bat-v*	Bulnesia arborea/ Verawood tree	18'-8x 8'ct. mtng. 4" calip. min.
4	Bst*	Bursera Simaruba/ Gumbo limbo tree	18-20'x10' 9'ct. mtng. 5" calip. min.

THEATRE AREA-MATERIAL SCHEDULE-TREES & PALMS

Qty.	Key	Botanical / common name	Size
6	Lit-w	Lagerstroemia natchez/ White Crape myrtle	18'-8x 8'ct. mtng. 4" calip. min.
14	Cet*	Conocarpus erectus/green buttonwood tree	18-20'x10' 9'ct. mtng. 4.5-5" calip. min.
10	Bat-v*	Bulnesia arborea/ Verawood tree	18'-8x 8'ct. mtng. 4" calip. min.
9	Bst*	Bursera Simaruba/ Gumbo limbo tree	18-20'x10' 9'ct. mtng. 5" calip. min.

* - Denotes native, or highly drought tolerant plant materials, per SFWMD, "Xeriscape Manual".
ALL TREES TO HAVE ROOT BARRIERS SEE DETAIL THIS SHEET
 Planting soils & mulch, see specs. & details
 Sod, Floratom



Typical Tree Planting Pit with CU Structural soil along sidewalk N.T.S.

IRRIGATION PLANS TO BE COMPLETED UPON SITE PLAN APPROVAL, AND PRIOR TO BUILDING PERMIT APPLICATION

Landscape Details

REVISIONS	BY
8/23/23 SPRAB SUBMITAL SET	
REVISED PER REVISED SITE/CIVIL PLAN DATED 12.20.23	
REVISED 1.23.24 PER REVISED CIVIL BASE PLAN	
REVISED 3.28.24 PER CITY REVIEW	
REVISED 4.13.24 PER C.E. COMMENTS	

DESIGNED BY:
CARTER & ASSOCIATES
LANDSCAPE ARCHITECTS INC.
 74 N.E. 5th AVE. Delray Beach, FL 33483
 L.A. 831
 561-272-9621

Landscape for:
Rainberry Bay
 Delray Beach, Florida

DRAWN	SKP
CHECKED	D.H.C.
DATE	08.01.2023
SCALE	1" = 40'-0"
JOB NO.	080123
SHEET	