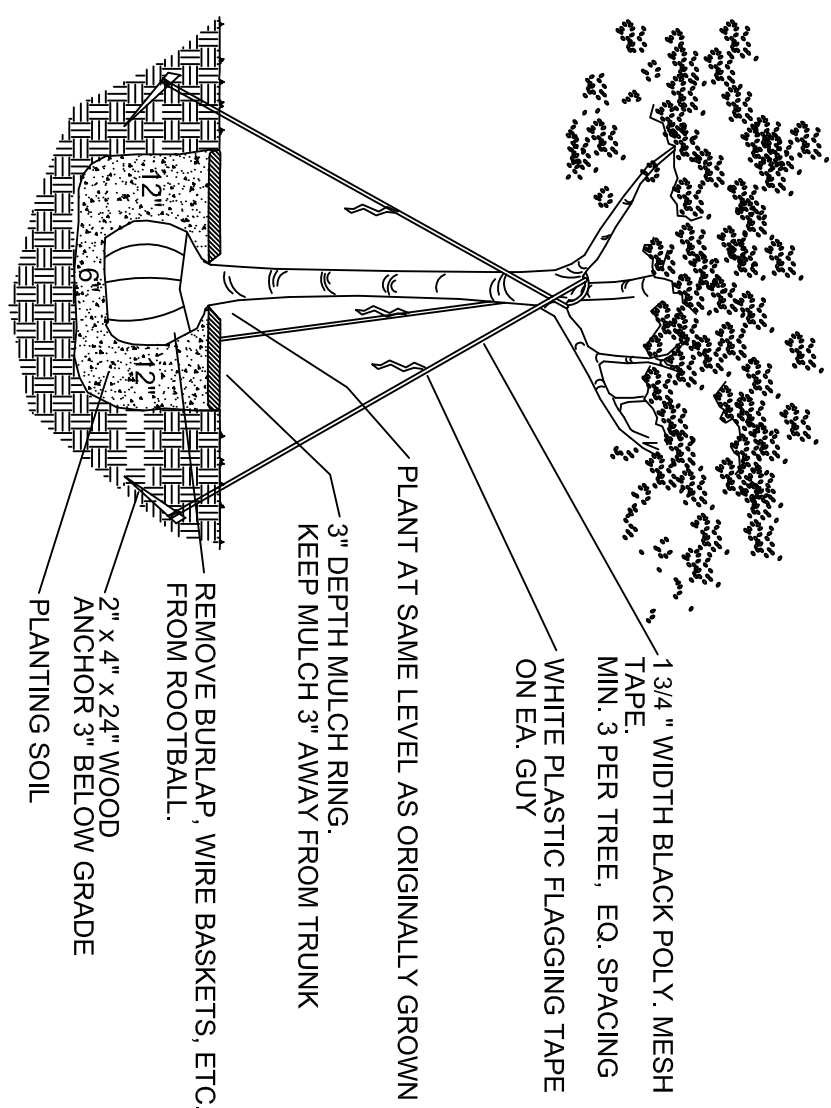


PLANTING DETAILS

NOT TO SCALE

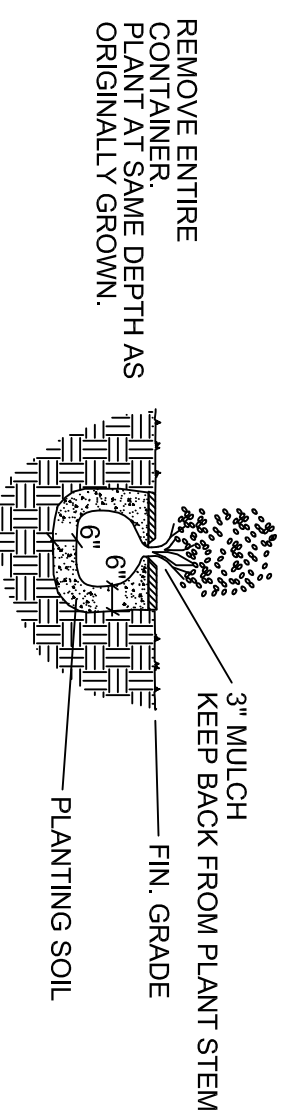


TREE PLANTING DETAIL

NOTE: MULTI-TRUNK TREE PLANTING SIMILAR

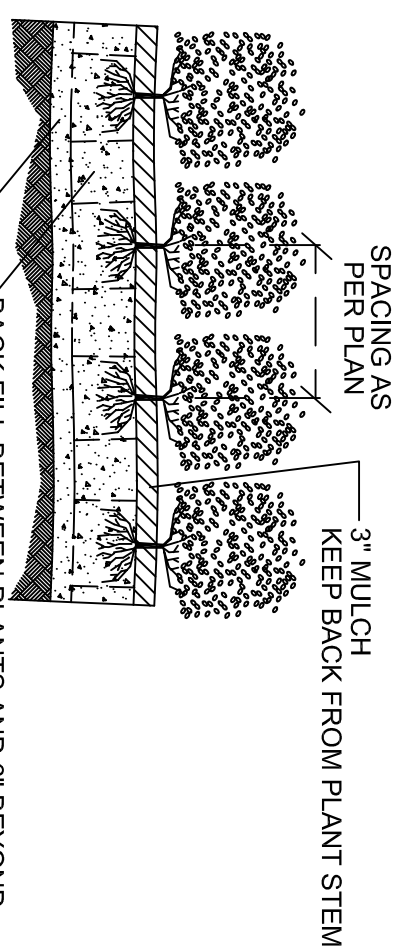
N.T.S.

NOTE:
INSTALL PLANTS WITH ADEQUATE SETBACK TO ALLOW FOR MATURE GROWTH WITH TYPICAL PAVEMENT FINISHES AND PLANT TYPES, AND WITHOUT OVERLAPPING PAVEMENT STRUCTURES, ETC.



SHRUB PLANTING DETAIL

NOT TO SCALE



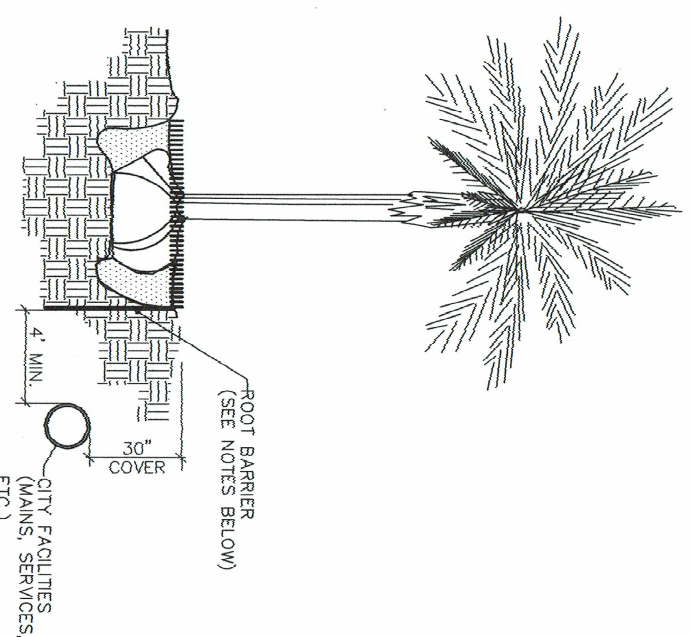
NOTE
PLANT AT SAME DEPTH AS ORIGINALLY GROWN

SHRUB MASS PLANTING

NOT TO SCALE

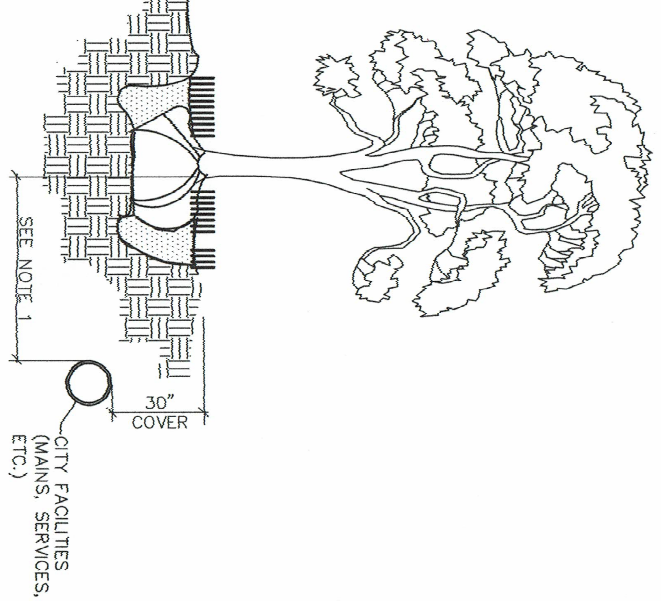
GENERAL NOTES

1. ALL PLANTS TO BE FLORIDA NO. 1 OR BETTER.
2. NO SUBSTITUTIONS WILL BE ACCEPTED WITHOUT PRIOR WRITTEN APPROVAL BY THE LANDSCAPE ARCHITECT.
3. AN IRRIGATION SYSTEM EXISTS WITH 100% COVERAGE AND IS AUTOMATICALLY OPERATED.
4. QUANTITIES ON PLANT MATERIALS ARE FOR CONVENIENCE ONLY. QUANTITIES IS TO BE DETERMINED BY THE CONTRACTOR WHEN DRIVEWAY ARE COMPLETED
5. CONTRACTOR IS RESPONSIBLE FOR LOCATING ALL UNDERGROUND UTILITIES TO AVOID DAMAGE.
6. LANDSCAPING MEETS P.L.S. LANDSCAPE PLANNING MANUAL, "PLANT THE RIGHT TREE IN THE RIGHT PLACE" REQUIREMENT. THERE ARE NO TREES TO BE PLANTED NEAR OVERHEAD UTILITIES.
7. ALL PLANTED AREAS ARE TO BE MULCHED WITH EUCALYPTUS MULCH, 50% SAND AND BE FERTILE, AND FRAGILE.
8. GROUNDCOVER AND SHRUBS TO BE LAID OUT IN A UNIFORM AND CONSISTENT PATTERN.
9. SHRUBS AND GROUNDCOVERS TO BE GUARANTEED FOR NINETY (90) DAYS AFTER FINAL WRITTEN ACCEPTANCE IS GIVEN BY OWNER OR LANDSCAPE ARCHITECT. CONTRACTOR IS RESPONSIBLE FOR PLANT MAINTENANCE UNTIL THE TIME OF WRITTEN ACCEPTANCE.
10. LANDSCAPING IN SAFE DISTANCE TRIANGLES SHALL BE MAINTAINED TO PROVIDE UNOBSTRUCTED VISIBILITY AT A LEVEL BETWEEN 2' AND 6' ABOVE FINISHED GRADE.
11. ALL NEWLY CREATED PLANTING BEDS TO BE CLEANED AND FREE OF WEEDS AND DEBRIS AND EXCAVATED AS REQUIRED TO FULFILL PLANTING SOIL REQUIREMENTS OF THE PLANTING DETAILS.
12. ALL NEWLY CREATED PLANTING BEDS TO BE CLEANED AND FREE OF WEEDS AND DEBRIS AND EXCAVATED AS REQUIRED TO FULFILL PLANTING SOIL REQUIREMENTS OF THE PLANTING DETAILS.



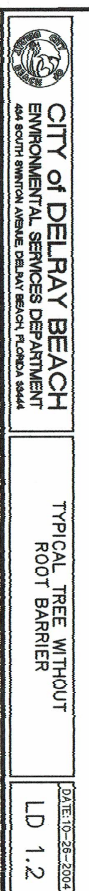
NOTES:

1. ALL ROOT BARRIERS SHALL BE 2' MINIMUM FROM ALL CITY FACILITIES.
2. THE INSTALLATION OF ROOT BARRIERS SHALL BE COORDINATED WITH CITY AND INSPECTED BY CITY PRIOR TO BACKFILLING. ALL ROOT BARRIERS SHALL EXTEND 3' DEEP FROM GRADE.
3. ROOT BARRIERS SHALL BE MINIMUM 3/8" RIBS. APPROVED PRODUCTS INCLUDE "DEEP ROOTS" AND "ROOT SOLUTIONS". FLEXIBLE BARRIERS SHALL BE 3/8" PANELS.
4. ALL ROOT BARRIERS SHALL BE INSTALLED IN ACCORDANCE WITH MANUFACTURER'S WRITTEN INSTRUCTIONS.



NOTES:

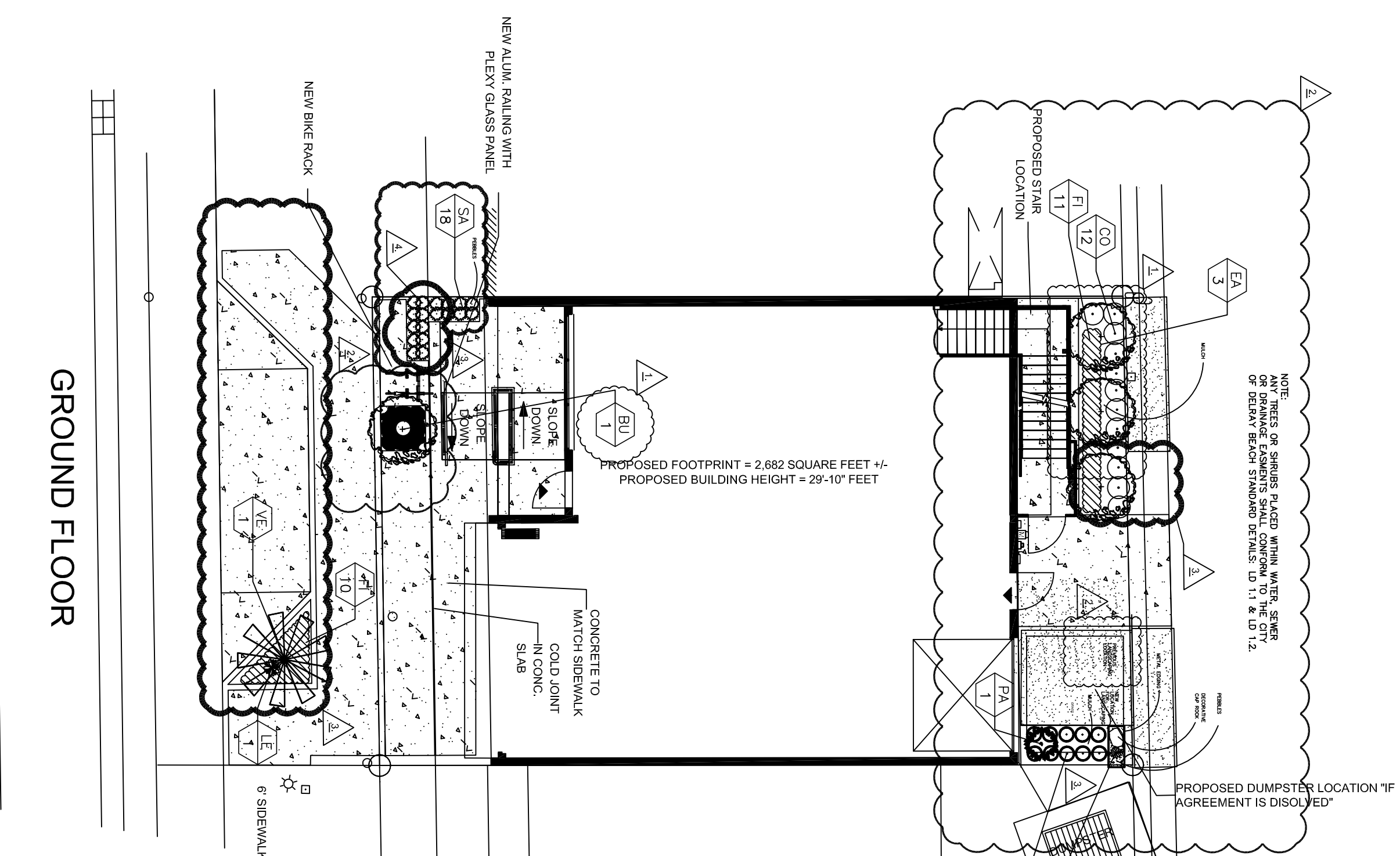
1. THIS DRAWING SHALL BE 1/2" MINIMUM FROM ALL CITY FACILITIES.
2. NO ROOT BARRIERS SHALL BE USED.



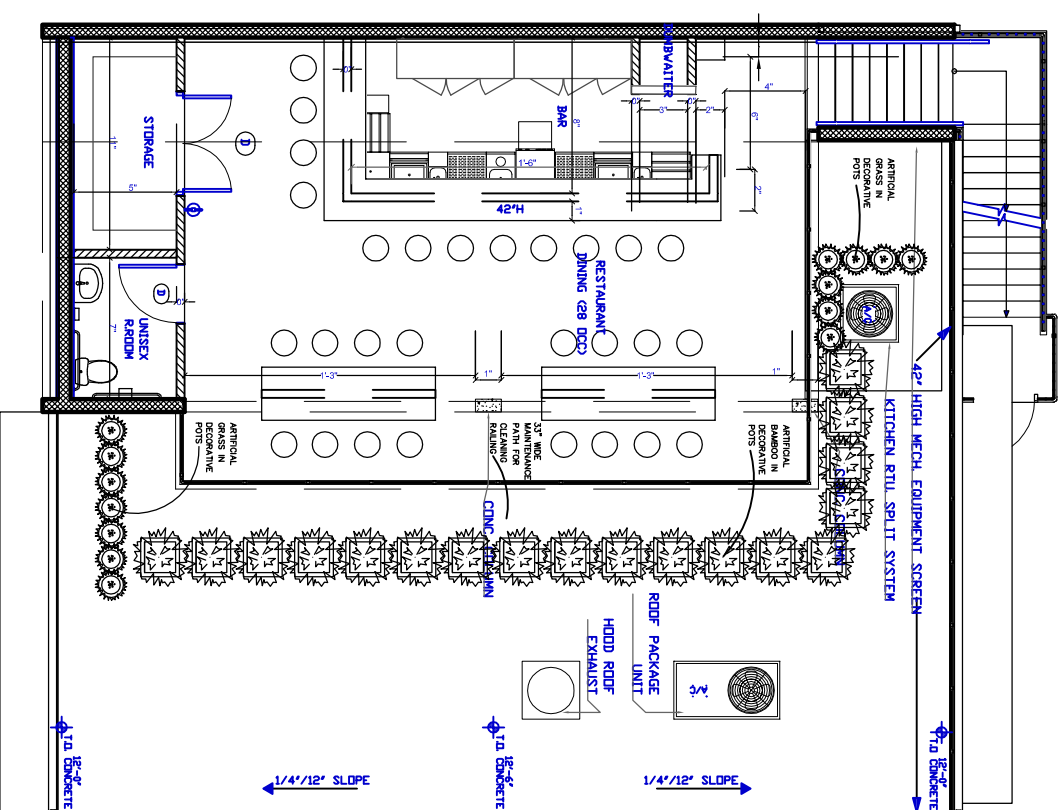
CITY OF DELRAY BEACH
SOUTH BEACH PLANNING DEPARTMENT
TYPICAL TREE AND ROOT BARRIERS
LD 1.1.2
REVISIONS

any trees or shrubs placed within water, sewer or drainage easements shall conform to the City of Delray Beach Standard Details, LD 1.1 & LD 1.2.

GROUND FLOOR



SECOND FLOOR



LANDSCAPE PLANS



SCALE - 1"=10'

PLANT LIST

KEY QTY.	DESCRIPTION	SIZE	NATIVE	DROUGHT TOL.
AG 1	Agave "Blue Flame"	3 gal, 10m off tips		YES
BU 1	Veranwood / Bulnesia Albionia	16H x 7" spr. Min. 8' c.t.	YES	YES
CO 12	Cocoplum "Red Tip" / Chrysobalanus icaco	3 gal., 24" o.c.	YES	YES
EA 3	East Pakia holly tree / Ilex attenuata	16 H x 7" spr. min., 8' c.t.	YES	YES
FI 21	Ficus Green Island / Ficus microcarpa	3 gal., 18" o.c.	YES	YES
LE 11	Lemon Grass / Cymbopogon citratus	3 gal., 18" H. min.		YES
PA 1	Giant Papaya / Carica papaya	7 gal.		
PO 18	Sanseveira "Laurentii" green with yellow edging	3 gal., 12" H. min., full in pot		
VE 14	Yuccita palmier / Yuccita montezumana	14" o.d. - single		

MISCELLANEOUS:

1. WHERE LABELED "PEBBLES" USE MEXICAN BEACH PABBLES, MEDIUM SIZE OVER SOIL SEPARATOR FABRIC.

THERE ARE NO EXISTING TREES ON SITE

DISCLAIMER

ALL IDEAS, DESIGNS, ARRANGEMENTS AND PLANS REQUESTED OR PRESENTED BY THE CLIENT ARE THE PROPERTY OF THE CLIENT. THE LANDSCAPE ARCHITECT AND DESIGNER SHALL NOT BE RESPONSIBLE FOR ANY ERRORS, OMISSIONS, OR VIOLATIONS FROM THE DIMENSIONS AND CONDITIONS SHOWN IN THESE DRAWINGS. WRITTEN DIMENSIONS OF THESE DRAWINGS SCALED SHOW DRAWINGS AND DETAILS SHALL HAVE PRECEDENCE OVER SCALED DIMENSIONS. THE LANDSCAPE ARCHITECT AND DESIGNER SHALL NOT BE RESPONSIBLE FOR ANY ERRORS, OMISSIONS, OR VIOLATIONS FROM THE DIMENSIONS AND CONDITIONS SHOWN IN THESE DRAWINGS. WRITTEN DIMENSIONS OF THESE DRAWINGS SCALED SHOW DRAWINGS AND DETAILS SHALL HAVE PRECEDENCE OVER SCALED DIMENSIONS. THE LANDSCAPE ARCHITECT AND DESIGNER SHALL NOT BE RESPONSIBLE FOR ANY ERRORS, OMISSIONS, OR VIOLATIONS FROM THE DIMENSIONS AND CONDITIONS SHOWN IN THESE DRAWINGS.

Project:

319 RESTAURANT
319 N.E. 3RD. AVENUE
DELRAY BEACH, FLORIDA 33444

PREPARED FOR:
BIG B INVESTMENTS, LLC.

Revisions:

1. RESPONSE TO TAC COMMENTS DATED 10/7/2022
2. RESPONSE TAC COMMENTS DATED 2/6/2023
3. RESPONSE TO TAC COMMENTS DATED 5/22/2023
4. RESPONSE TO TAC COMMENTS DATED 8.23.23. 3rd SUBMITTAL

Scale:

LD #14667068
Maurice S. Smith

DRAWING: LANDSCAPE PLAN
PROJECT NAME: SUSHI RESTAURANT
DATE: 8.3.2022

Scale: 1"=10'
Drawn by: M.R.S.
Sheet No.:

L-1