

Arts WAREHOUSE

A Project of the Delray Beach CRA  DELRAY BEACH CRA
COMMUNITY REDEVELOPMENT AGENCY

AUGUST-SEPTEMBER 2024 REPORT

EVENTS

First Friday Art Walk - August 2 (163 Visitors)

Co-Working Studio - Weekly

First Friday Art Walk - September 6 (185 Visitors)

Artist Talk and Program Tour - September 13



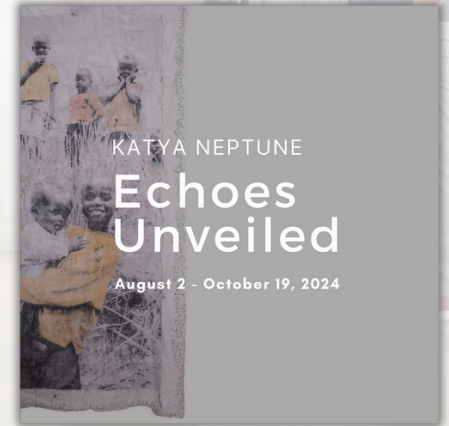
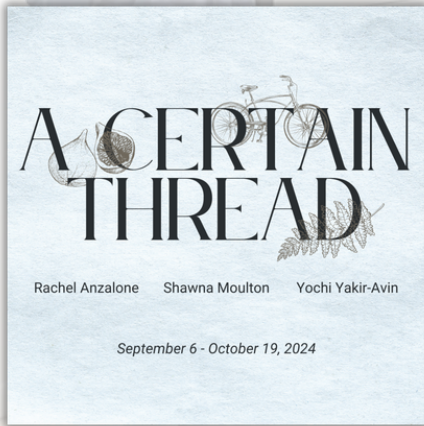
**17 WORKSHOPS
HELD IN AUGUST**

**14 WORKSHOPS
SCHEDULED IN
SEPTEMBER**

[Click Here](#) for Workshop & Event Registration



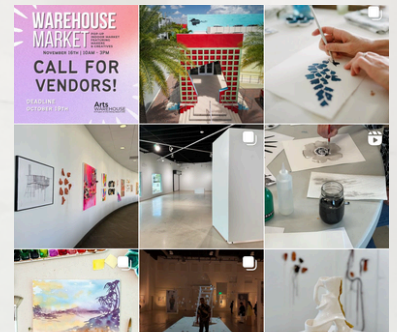
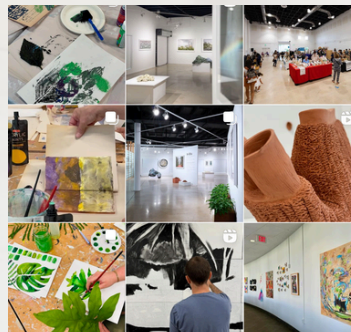
New & Current Exhibitions:





**Social Media
August 12th - September 13th**

Instagram Insights:

Accounts Reached 9,425
Total Followers 6,805 +144
Impressions 31K



 artswarehouse.org
 [@artswarehousedelray](https://www.instagram.com/artswarehousedelray)

Arts Warehouse

Regular Business Hours for visitors are:

**Wednesday - Friday 10am - 7pm,
Saturday 10am - 5pm, or by appointment**



This Delray Beach Community Redevelopment Agency rehabilitated warehouse is located on Artist Alley in the Pineapple Grove district opened in late 2017. Arts Warehouse is an Art space that includes studio artists, holds gallery exhibitions, visual art workshops, professional development opportunities, talks, and special events. The 15,000 sq. ft. space is a catalyst for economic development and growth within the Pineapple Grove Arts District and the community as a whole, supporting artists as small businesses.

[Click here](#) to learn more about the CRA's Redevelopment Efforts