

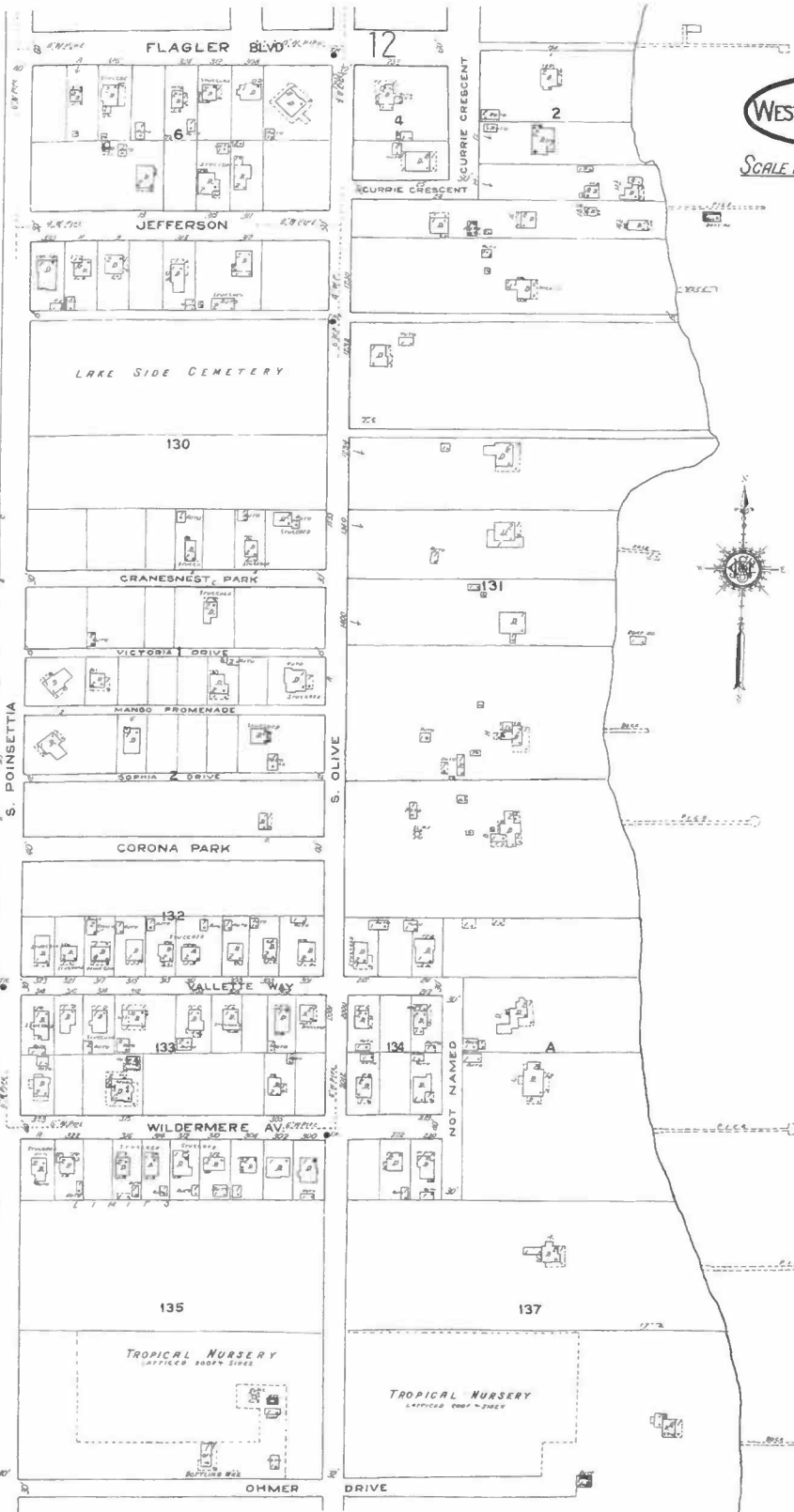


FEB. 1920  
WEST PALM BEACH  
FLA.

SCALE 100 FT. TO AN INCH

14

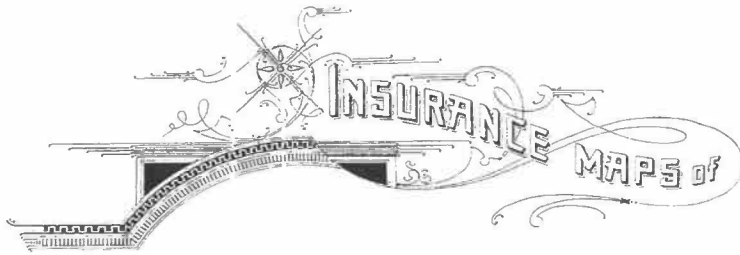
WOODLAWN CEMETERY



L a k e W o o d l a w n

Scale 100 Ft to One Inch  
Copyright 1920 by the Standard Map Co.

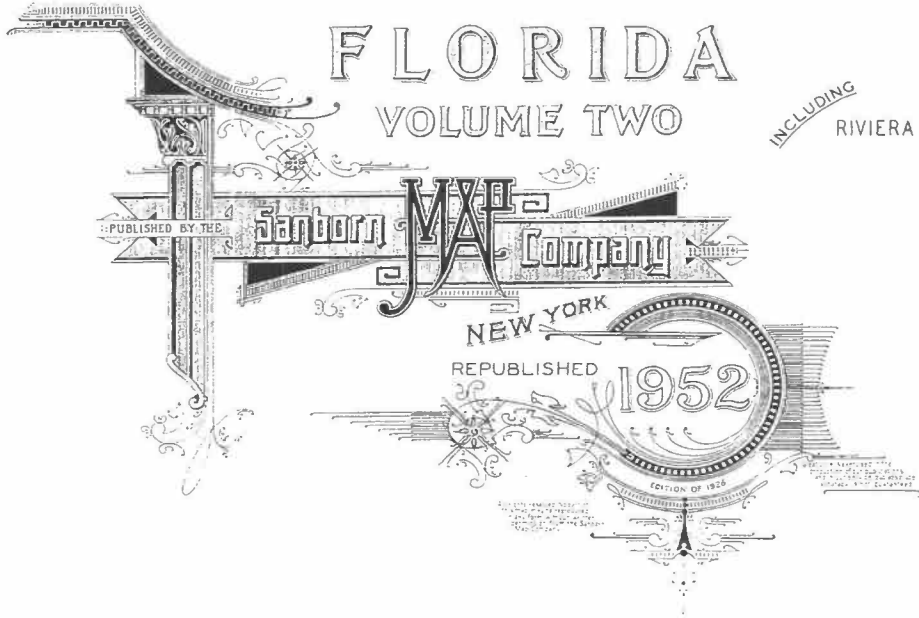
W. D. Bess  
Library of Congress



# WEST PALM BEACH

FLORIDA  
VOLUME TWO

INCLUDING RIVIERA BEACH



COPYRIGHT 1953

F 15170

LC

NEW INDEX, DECEMBER, 1952

GIBB  
W553  
1952  
v. 2

Table with columns for street names and sheet numbers. Streets listed include A Place, Aceria Road, Alabama Ave., Alameda Road, Albemarle Road, etc.

Table with columns for street names and sheet numbers. Streets listed include Court, Crane's West Way, Croton Way, Curric Crescent, Daves Ave., Delphic, etc.

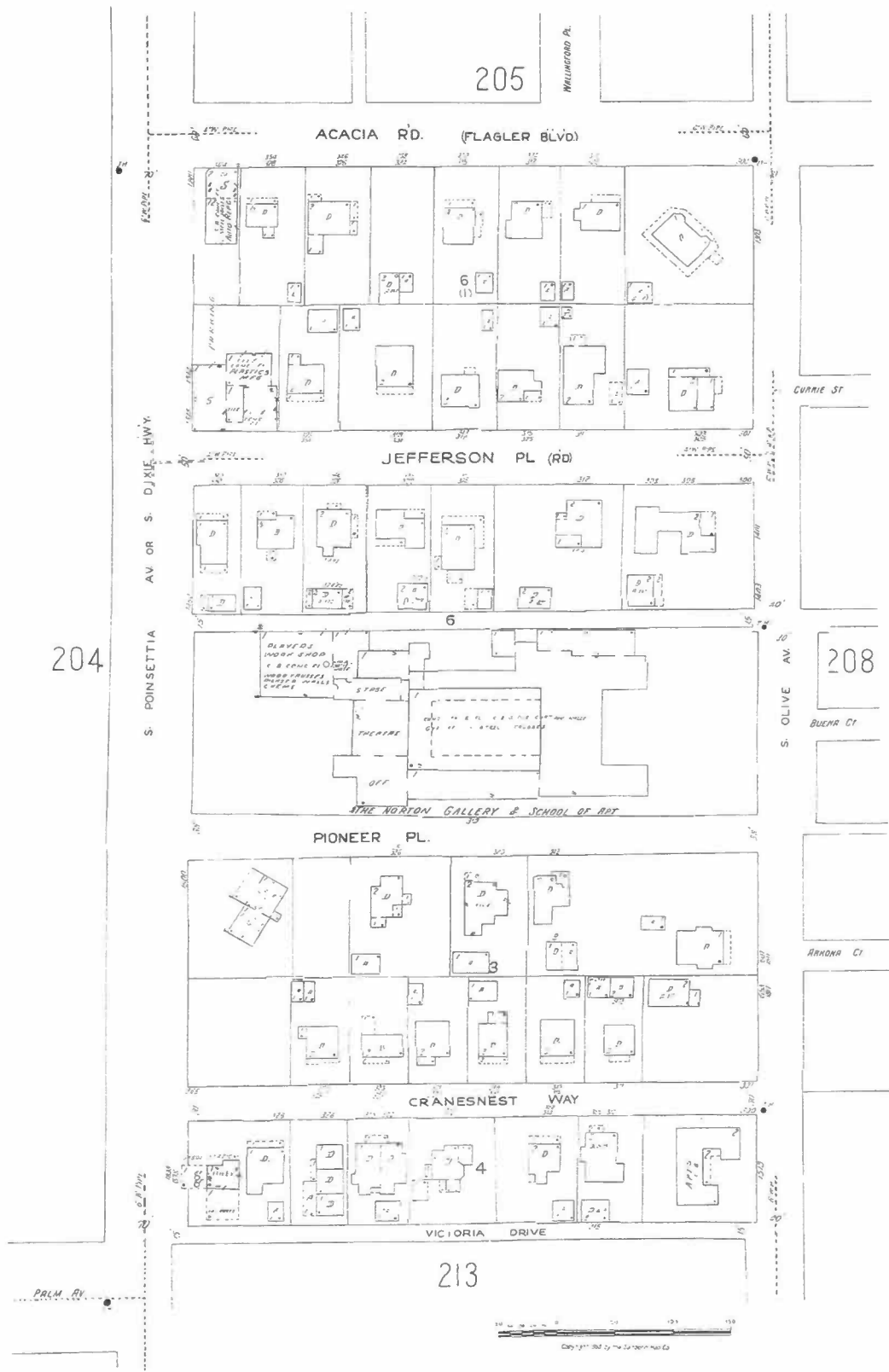
Table with columns for street names and sheet numbers. Streets listed include Garden Ave., Georgia Ave., Granada Road, Glasys Ave., Glenridge Drive, etc.

Table with columns for street names and sheet numbers. Streets listed include McKinosh, Macy, Maduck, Malvern Road, etc.

\* Indicates only one side of Street shown

Map Division  
7-OCT 1953  
Library of Congress





204

205

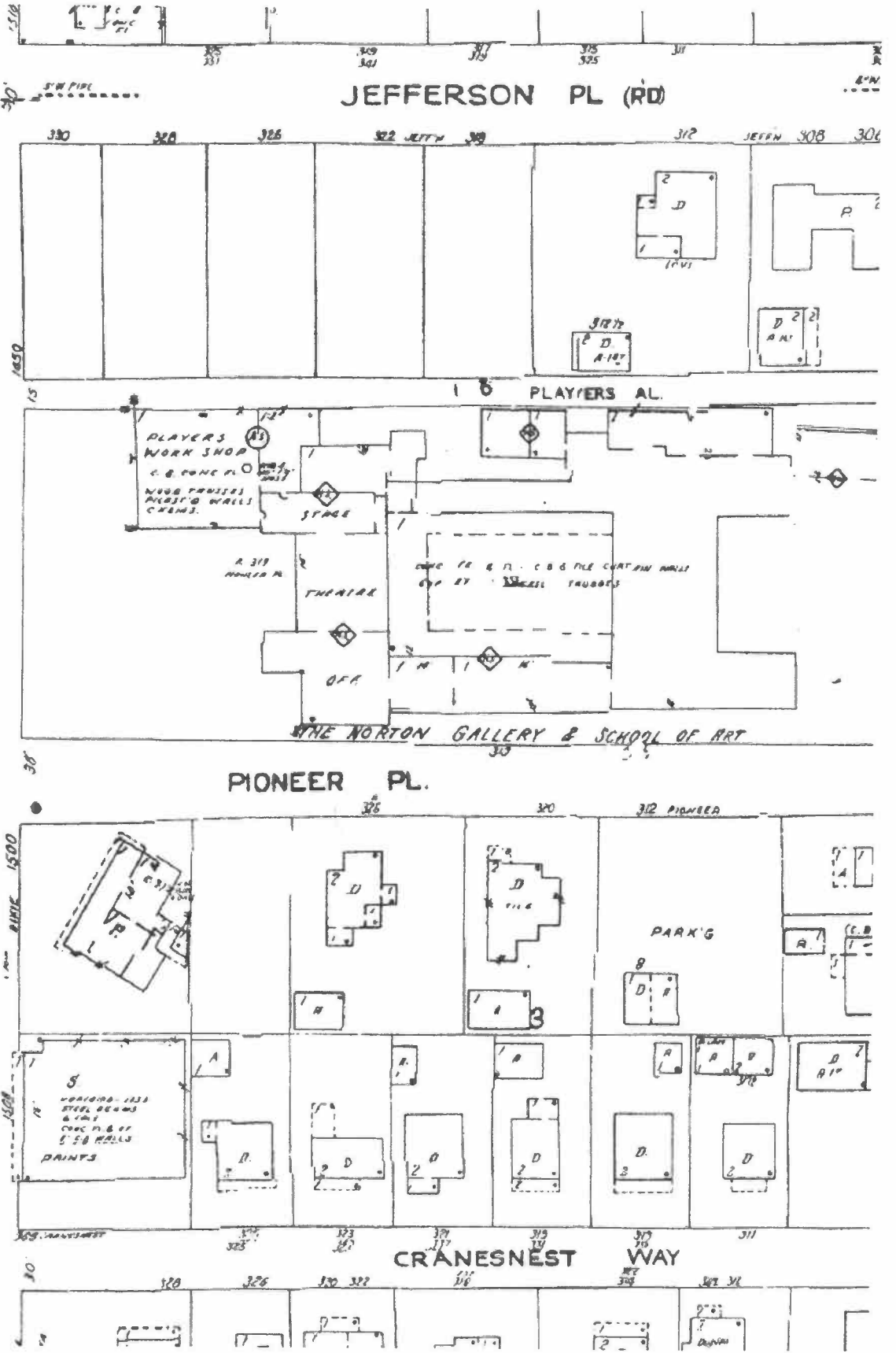
208

213

Copyright 1922 by The Standard Map Co.

204

S. DIXIE (HWY.) (S. POINSETTIA AVE.)



Friederike H. Mittner, AICP  
City Historic Preservation Planner