






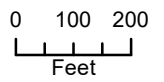


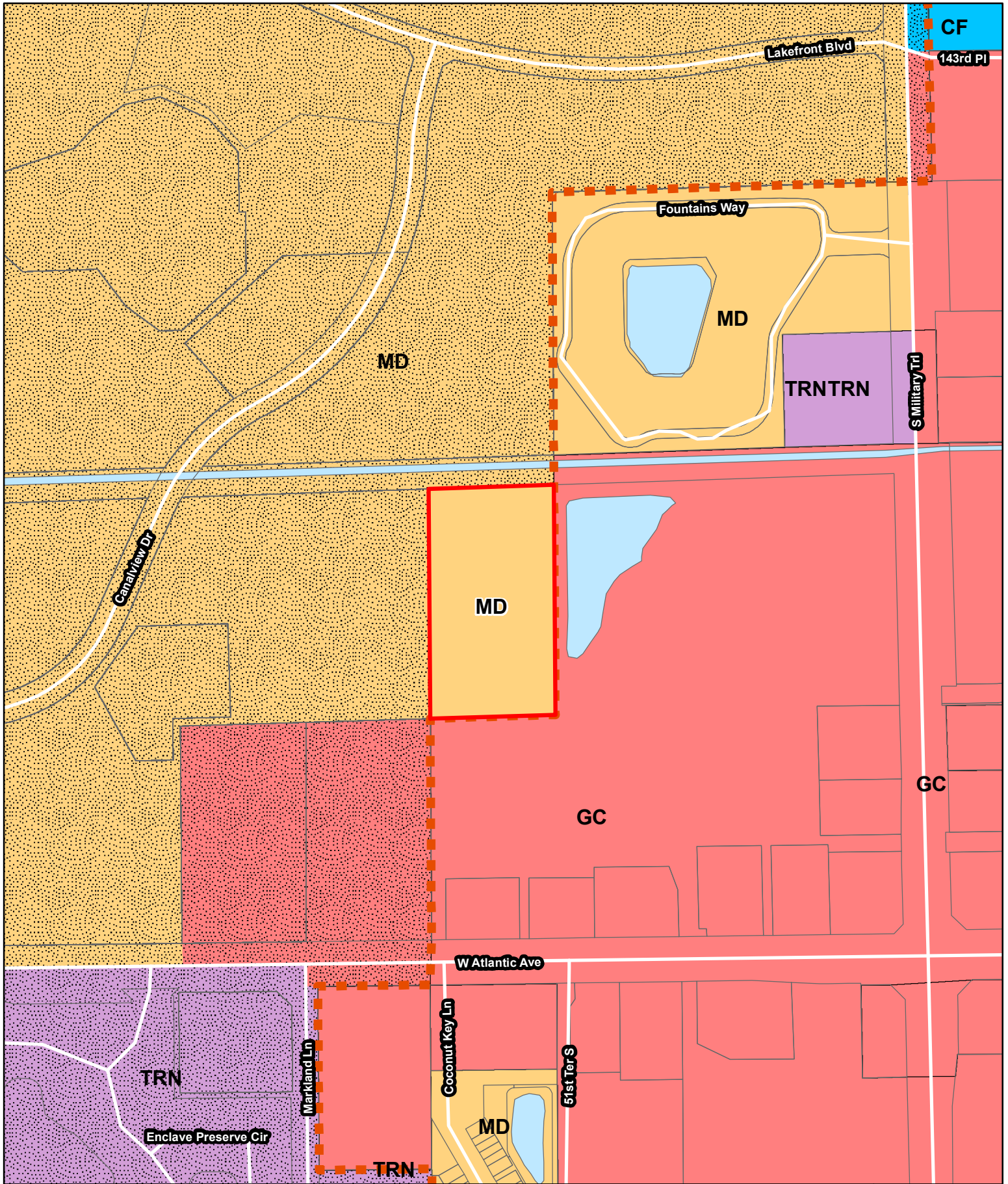
Existing Land Use

-  Subject Property*
-  Multiple Family Residential
-  Mixed Use
-  Municipal City Limits
-  Commercial
-  Institutional
-  Future Annexation Area

*PBC HR8 - Palm Beach County Residential High
 MD - Medium Density Residential
 TRN - Commercial and Residential

CF - Community Facilities
 GC - General Commercial





Proposed Land Use

- Subject Property
- Municipal City Limits
- Future Annexation Area
- Multiple Family Residential
- Commercial
- Mixed Use
- Institutional
- MD - Medium Density Residential
- TRN - Commercial and Residential
- GC - General Commercial
- CF - Community Facilities

