

ATLANTIC =CROSSING=

NE 1ST ST.

First two buildings take shape
above underground parking

Luxury Apartments

NE 6TH AVE -
FEDERAL HWY

Class A offices above shops and restaurants

ATLANTIC AVE.

Le Colonial

KNAUER

Le Colonial | Delray Beach



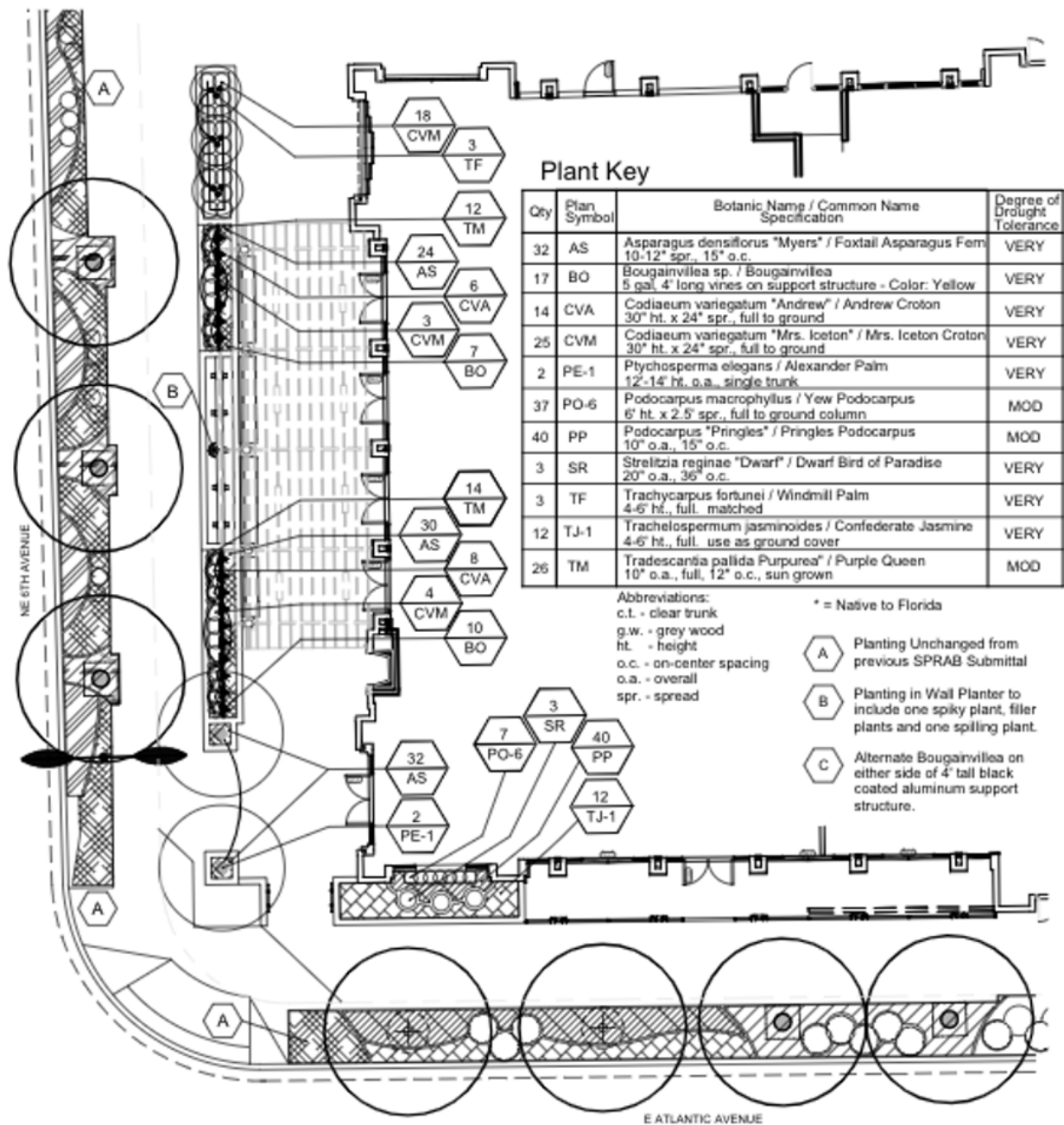
Le Colonial

**ATLANTIC
= CROSSING =**

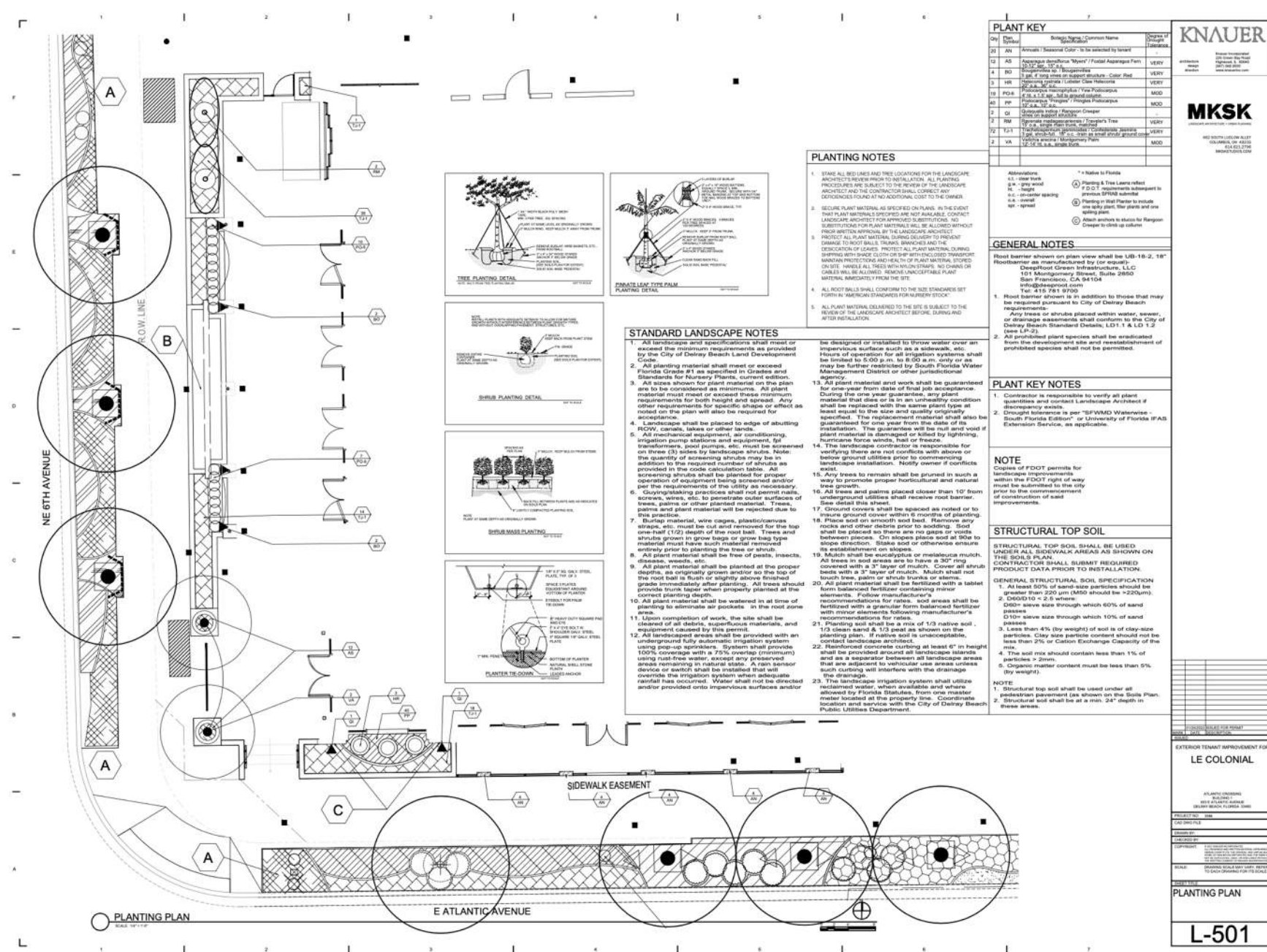
Recent Photos

Le Colonial | Delray Beach





Previously Approved



Proposed

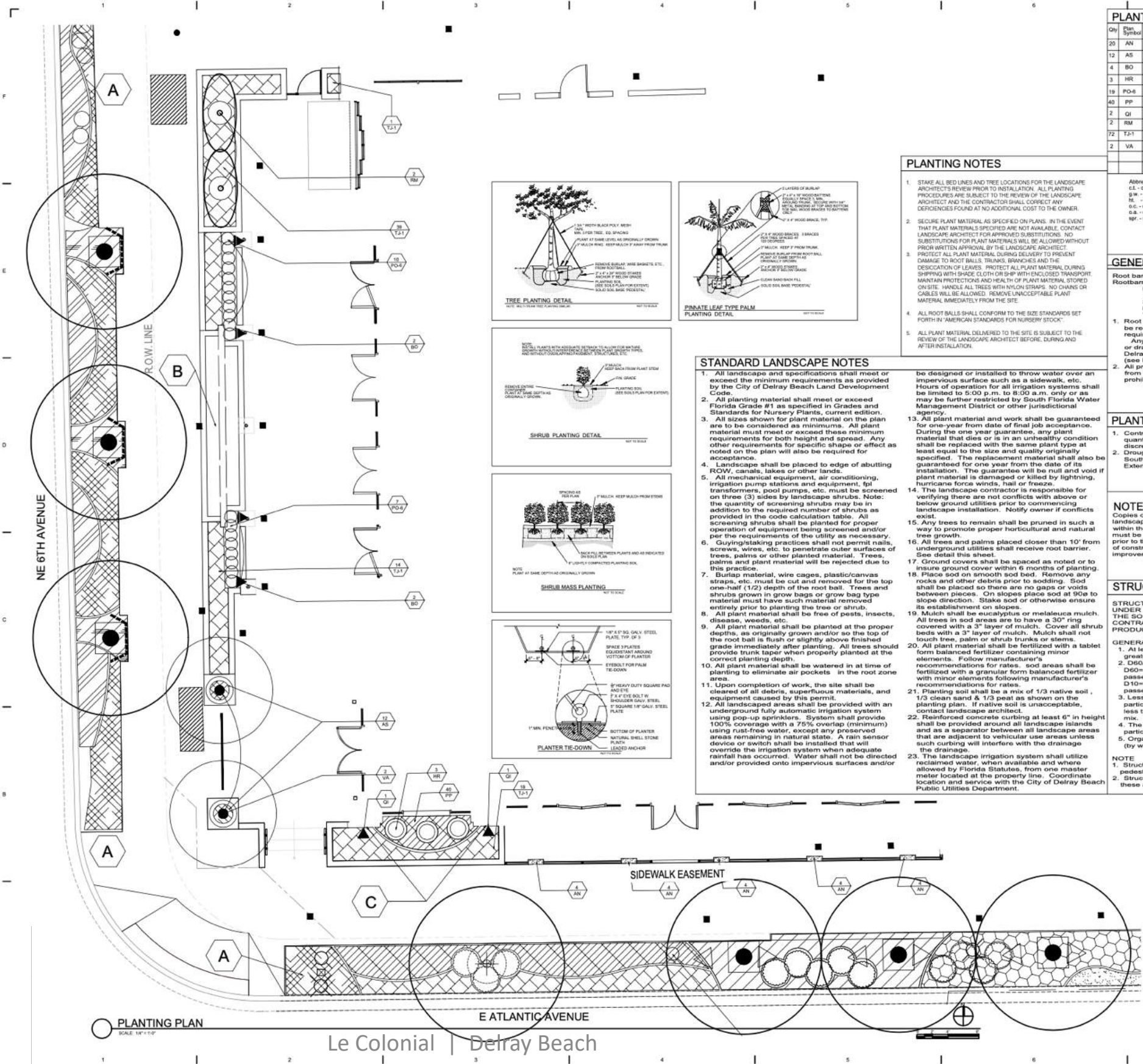
Planting Plan

Le Colonial | Delray Beach

MKSK

Enlarged
Proposed
Planting Plan

MKSK

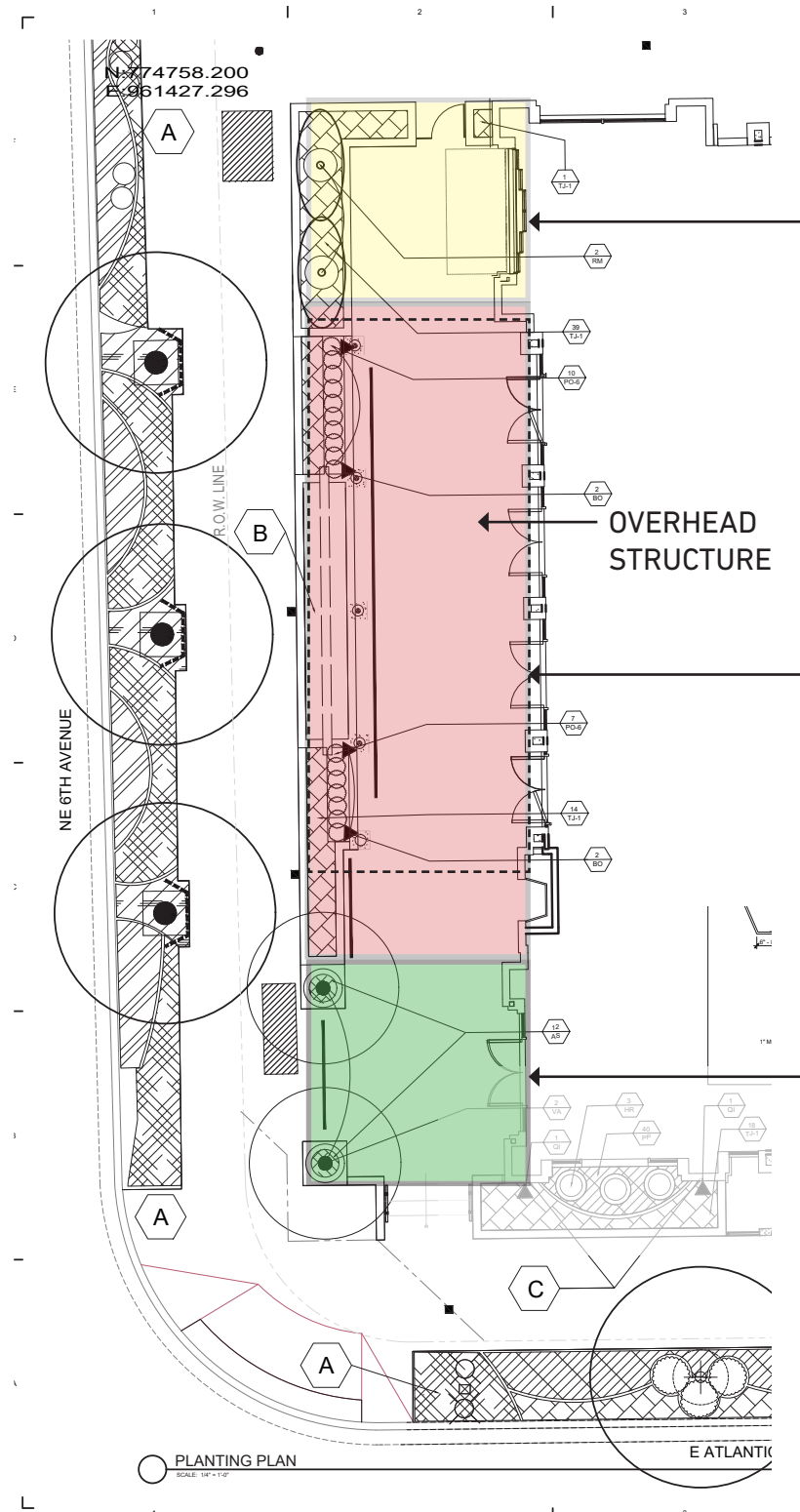


KNAUER

Knauf Incorporated
200 Green Bay Road
Highland, IL 60140
(815) 361-8000
www.knaufusa.com

MKSK

MKS Skanska
462 SOUTH LUDLOW ALLEY
COLUMBUS, OH 43225
614.623.2796
MKSSTUDIOS.COM



RM - TRAVELER'S PALM



TJ-1- STAR JASMINE



BO - RED BOUGAINVILLEA



PO-6 - PODOCARPUS TJ-1- STAR JASMINE



VA: MONTGOMERY PALM

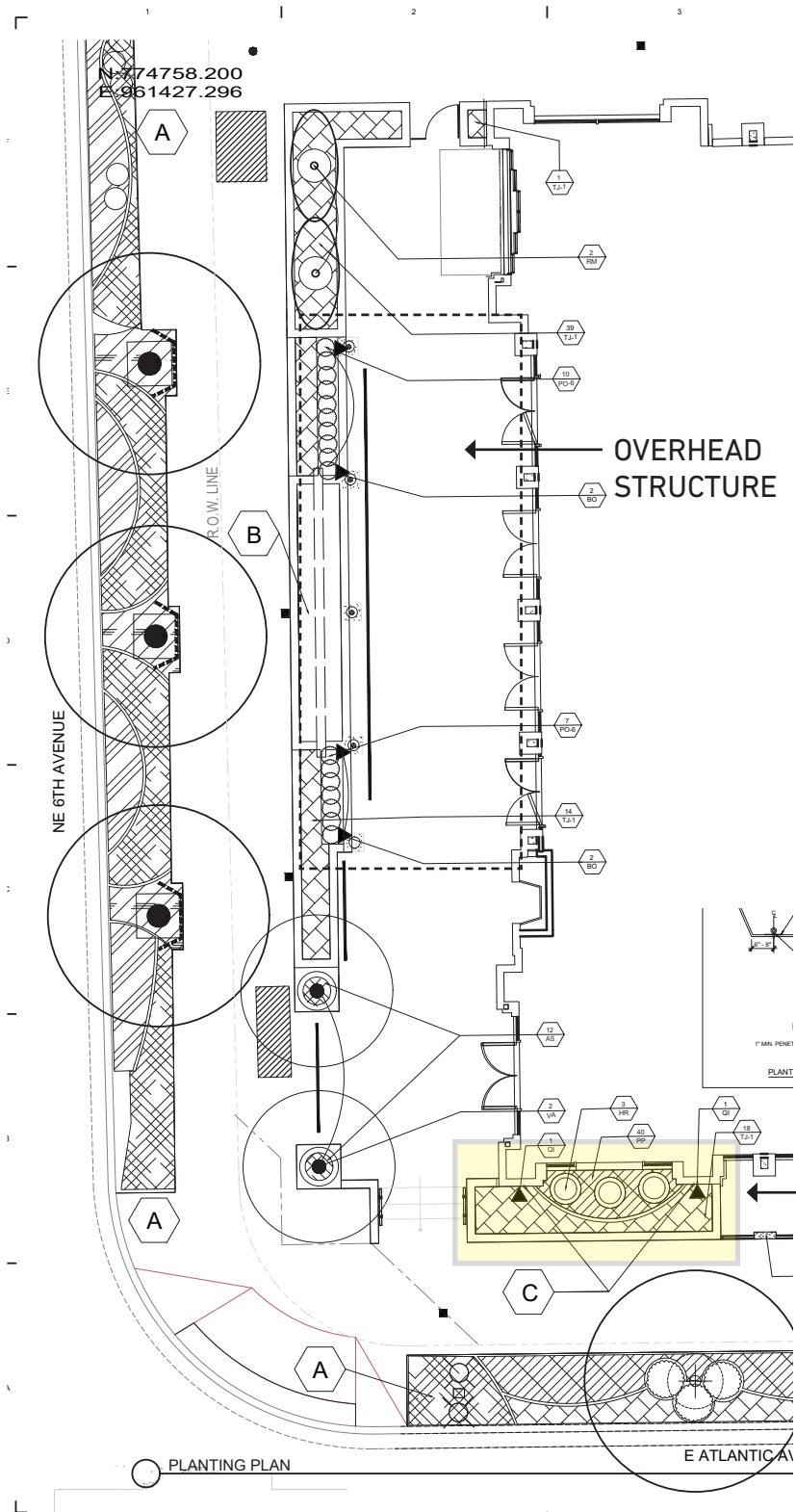


AS: ASPARAGUS FERN



Aqua Pots





QI- RANGOON CREEPER



SR- LOBSTER CLAW
HELECONIA



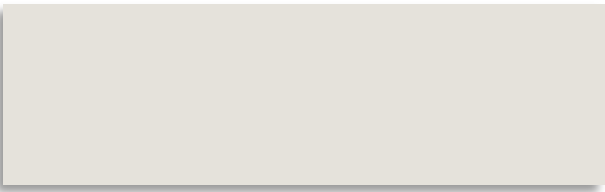
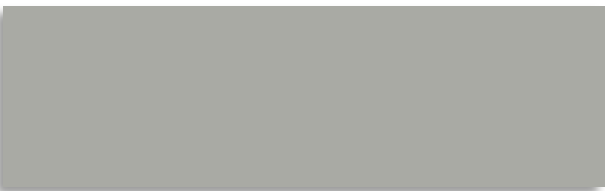

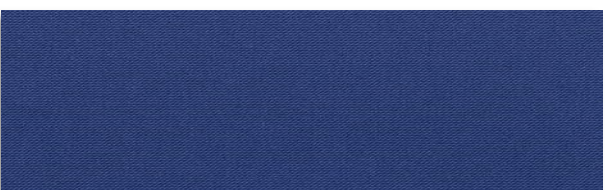
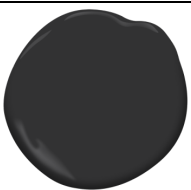
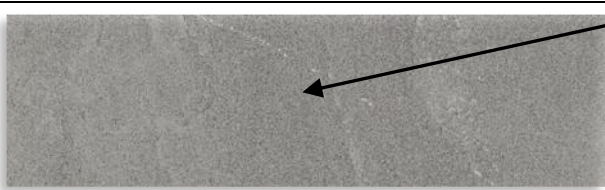


PP- PRINGLES PODOCARPUS



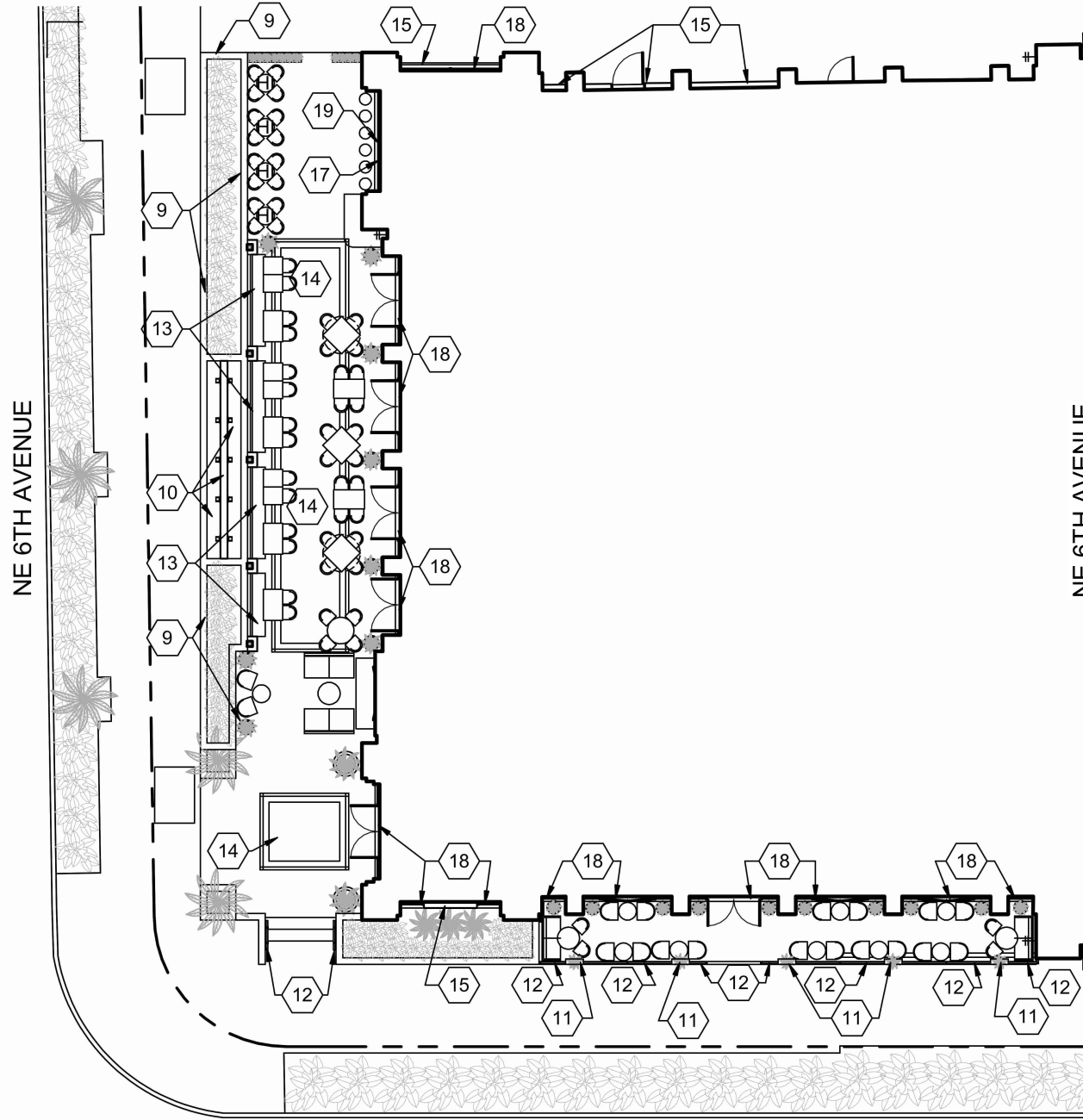
TJ-1- STAR JASMINE

Planting Materials

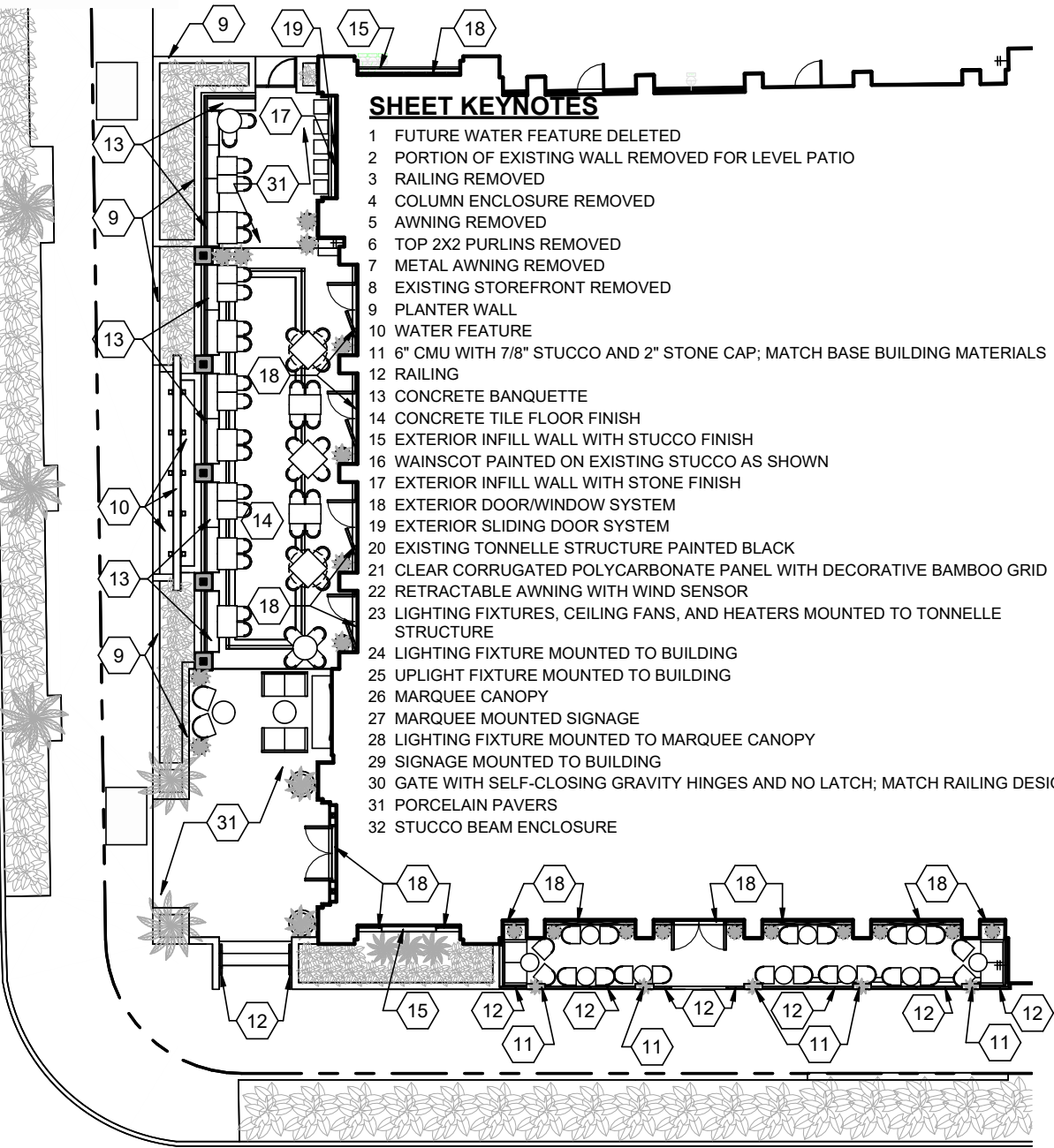
Le Colonial | Delray Beach

BUILDING MATERIALS AND COLOR SAMPLE FORM		
NOTE THE TYPE OF MATERIAL AND COLOR SPECIFICATION PROPOSED INCLUDING TYPES OF FINISHES. CAN ATTACH IMAGES OR PHOTOS OF MATERIALS. ATTACH ACTUAL PAINT COLOR SAMPLES WITH DETAILS OF MANUFACTURER		
ROOF	WALLS	
Existing No Change		Walls & Pergola Columns Sherwin Williams Origami White – SW 7636
FASCIA	TRIM/OTHER	
Existing No Change		Wainscoting Benjamin Moore Platinum Gray – HC 179
WINDOWS	SHUTTERS/AWNINGS	
Windows Benjamin Moore Black – 2132-10 		Navy Blue Awning Sunbrella Navy 5439-137
RAILINGS	PAVER SYSTEM	
Railings Benjamin Moore Black – 2132-10 		Enhanced Paving Porcelain Tile Floor Kronos Pennsylvania Bluestone True Blue
Pergola Framing	PAVER SYSTEM	
Pergola Framing Benjamin Moore Black – 2132-10 		Encaustic Tile Floor Carocim Custom Le Colonial Pattern

C:\Rvw\3588 Le Colonial Delray Beach_R22_jktrtdge@knauerinc.com.rvt
3/21/2022 11:54:53 PM



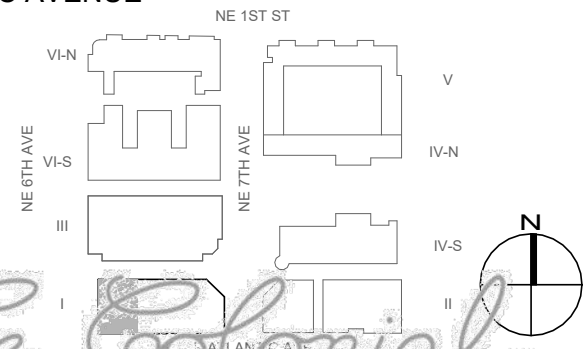
E ATLANTIC AVENUE
PREVIOUSLY APPROVED
SCALE: 1/16" = 1'-0"



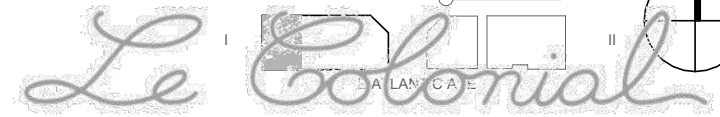
E ATLANTIC AVENUE
PROPOSED
SCALE: 1/16" = 1'-0"

SHEET KEYNOTES

- 1 FUTURE WATER FEATURE DELETED
- 2 PORTION OF EXISTING WALL REMOVED FOR LEVEL PATIO
- 3 RAILING REMOVED
- 4 COLUMN ENCLOSURE REMOVED
- 5 AWNING REMOVED
- 6 TOP 2X2 PURLINS REMOVED
- 7 METAL AWNING REMOVED
- 8 EXISTING STOREFRONT REMOVED
- 9 PLANTER WALL
- 10 WATER FEATURE
- 11 6" CMU WITH 7/8" STUCCO AND 2" STONE CAP; MATCH BASE BUILDING MATERIALS
- 12 RAILING
- 13 CONCRETE BANQUETTE
- 14 CONCRETE TILE FLOOR FINISH
- 15 EXTERIOR INFILL WALL WITH STUCCO FINISH
- 16 WAINSCOT PAINTED ON EXISTING STUCCO AS SHOWN
- 17 EXTERIOR INFILL WALL WITH STONE FINISH
- 18 EXTERIOR DOOR/WINDOW SYSTEM
- 19 EXTERIOR SLIDING DOOR SYSTEM
- 20 EXISTING TONNELLE STRUCTURE PAINTED BLACK
- 21 CLEAR CORRUGATED POLYCARBONATE PANEL WITH DECORATIVE BAMBOO GRID
- 22 RETRACTABLE AWNING WITH WIND SENSOR
- 23 LIGHTING FIXTURES, CEILING FANS, AND HEATERS MOUNTED TO TONNELLE STRUCTURE
- 24 LIGHTING FIXTURE MOUNTED TO BUILDING
- 25 UPLIGHT FIXTURE MOUNTED TO BUILDING
- 26 MARQUEE CANOPY
- 27 MARQUEE MOUNTED SIGNAGE
- 28 LIGHTING FIXTURE MOUNTED TO MARQUEE CANOPY
- 29 SIGNAGE MOUNTED TO BUILDING
- 30 GATE WITH SELF-CLOSING GRAVITY HINGES AND NO LATCH; MATCH RAILING DESIGN
- 31 PORCELAIN PAVERS
- 32 STUCCO BEAM ENCLOSURE



Floor Plan
Le Colonial | Delray Beach

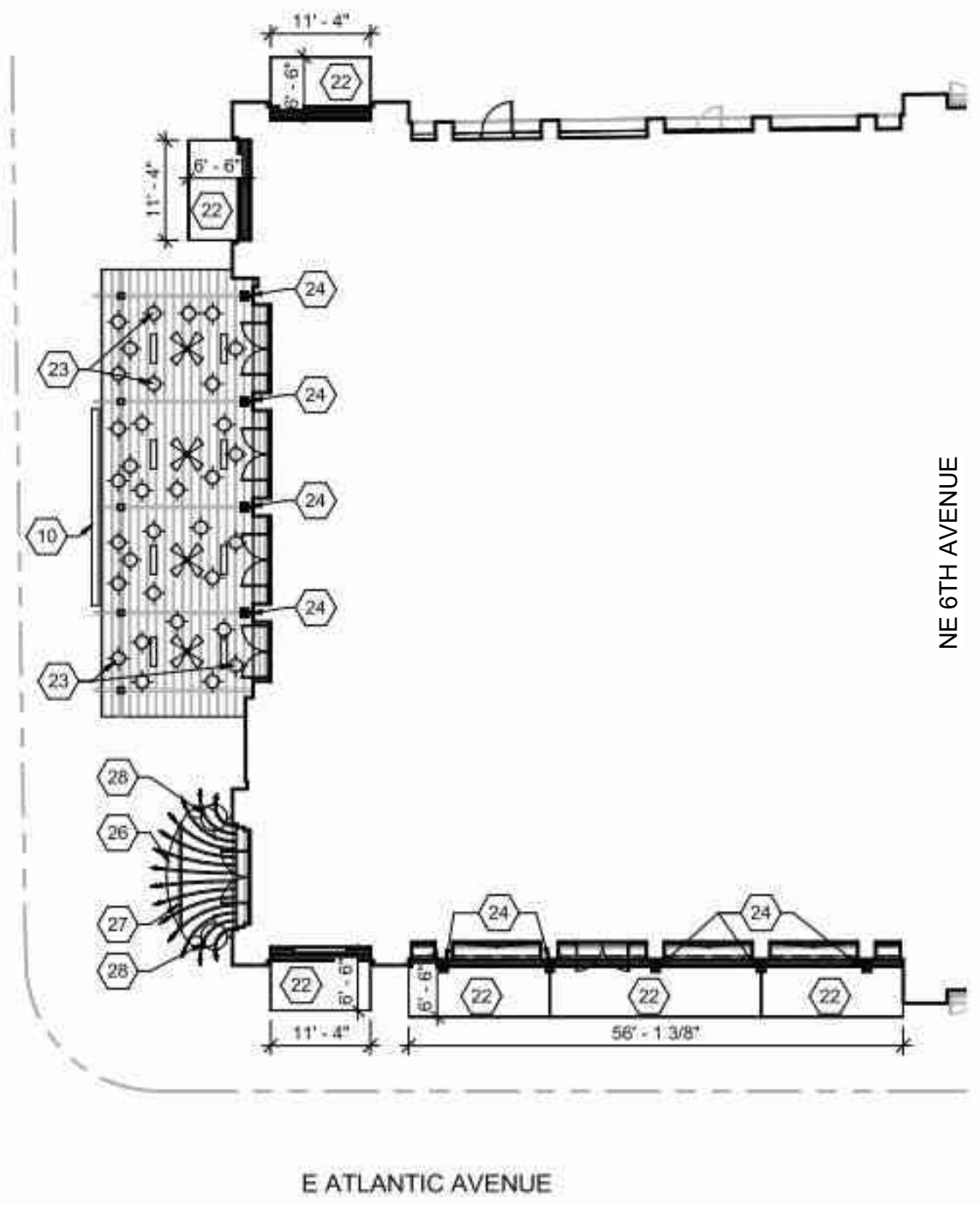


KNAUER <small>Knauer Incorporated 226 Green Bay Road Highwood, IL 60040 (847) 948-9900 www.knauerinc.com</small>		03/22/2022		03/22/2022	
SPRAB SUBMITTAL LE COLONIAL ATLANTIC CROSSING BUILDING 1 603 E ATLANTIC AVENUE DELRAY BEACH, FLORIDA 33483		DATE		DESCRIPTION	
PROJECT NO: 3588		DRAWN BY: JK		CHECKED BY: SO	
FLOOR PLANS		© 2022 KNAUER INCORPORATED		1.1	

c:\rvt\3588 Le Colonial Delray Beach_r22_kittrdge@knauerinc.com.rvt
3/21/2022 11:54:59 PM



NE 6TH AVENUE

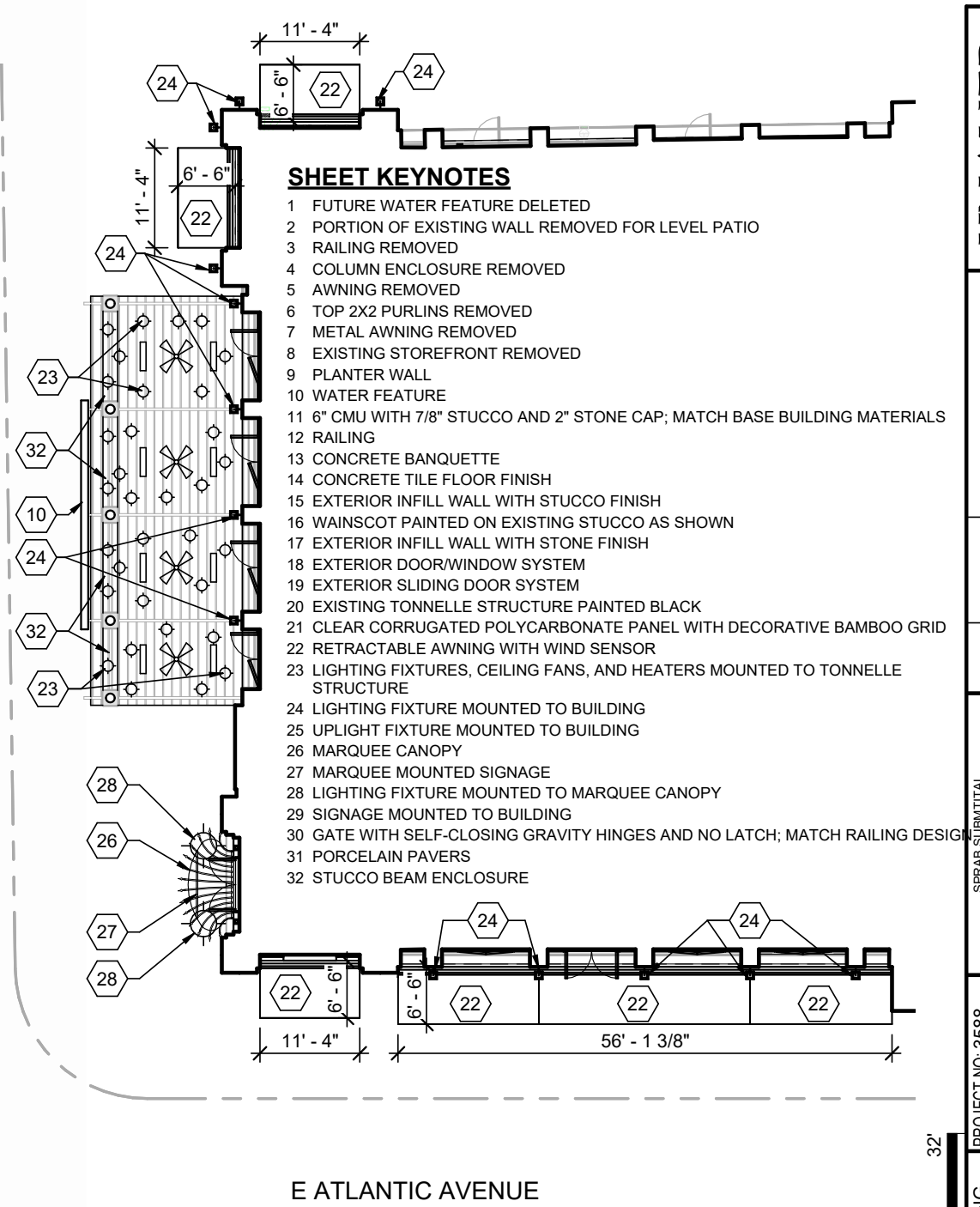


PREVIOUSLY APPROVED

SCALE: 1/16" = 1'-0"

Reflected Ceiling Plan

Le Colonial | Delray Beach



PROPOSED

SCALE: 1/16" = 1'-0"



SHEET KEYNOTES

- 1 FUTURE WATER FEATURE DELETED
- 2 PORTION OF EXISTING WALL REMOVED FOR LEVEL PATIO
- 3 RAILING REMOVED
- 4 COLUMN ENCLOSURE REMOVED
- 5 AWNING REMOVED
- 6 TOP 2X2 PURLINS REMOVED
- 7 METAL AWNING REMOVED
- 8 EXISTING STOREFRONT REMOVED
- 9 PLANTER WALL
- 10 WATER FEATURE
- 11 6" CMU WITH 7/8" STUCCO AND 2" STONE CAP; MATCH BASE BUILDING MATERIALS
- 12 RAILING
- 13 CONCRETE BANQUETTE
- 14 CONCRETE TILE FLOOR FINISH
- 15 EXTERIOR INFILL WALL WITH STUCCO FINISH
- 16 WAINSCOT PAINTED ON EXISTING STUCCO AS SHOWN
- 17 EXTERIOR INFILL WALL WITH STONE FINISH
- 18 EXTERIOR DOOR/WINDOW SYSTEM
- 19 EXTERIOR SLIDING DOOR SYSTEM
- 20 EXISTING TONNELLE STRUCTURE PAINTED BLACK
- 21 CLEAR CORRUGATED POLYCARBONATE PANEL WITH DECORATIVE BAMBOO GRID
- 22 RETRACTABLE AWNING WITH WIND SENSOR
- 23 LIGHTING FIXTURES, CEILING FANS, AND HEATERS MOUNTED TO TONNELLE STRUCTURE
- 24 LIGHTING FIXTURE MOUNTED TO BUILDING
- 25 UPLIGHT FIXTURE MOUNTED TO BUILDING
- 26 MARQUEE CANOPY
- 27 MARQUEE MOUNTED SIGNAGE
- 28 LIGHTING FIXTURE MOUNTED TO MARQUEE CANOPY
- 29 SIGNAGE MOUNTED TO BUILDING
- 30 GATE WITH SELF-CLOSING GRAVITY HINGES AND NO LATCH; MATCH RAILING DESIGN
- 31 PORCELAIN PAVERS
- 32 STUCCO BEAM ENCLOSURE

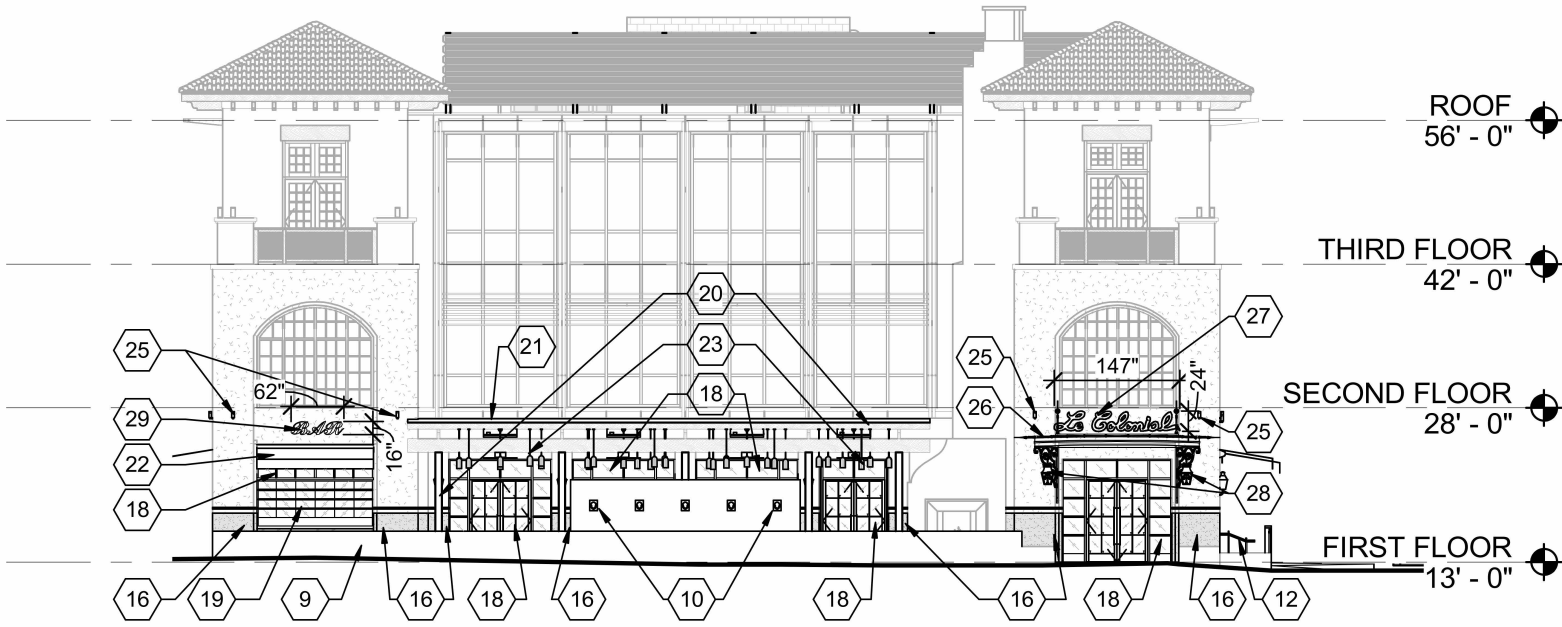


REFLECTED CEILING
PLANS
1.2

KNAUER Knauf Incorporated 2500 Knauf Drive Highwood, IL 60040 (630) 948-8889 www.knaufinc.com		DESCRIPTION	
DATE		03/22/2022	
MARK		DATE	
PROJECT NO: 3588		SPRAB SUBMITTAL	
DRAWN BY: JK		LE COLONIAL	
CHECKED BY: SO		ATLANTIC CROSSING	
© 2022 KNAUF INCORPORATED		BUILDING 1	
		603 E ATLANTIC AVENUE	
		DELRAY BEACH, FLORIDA 33483	

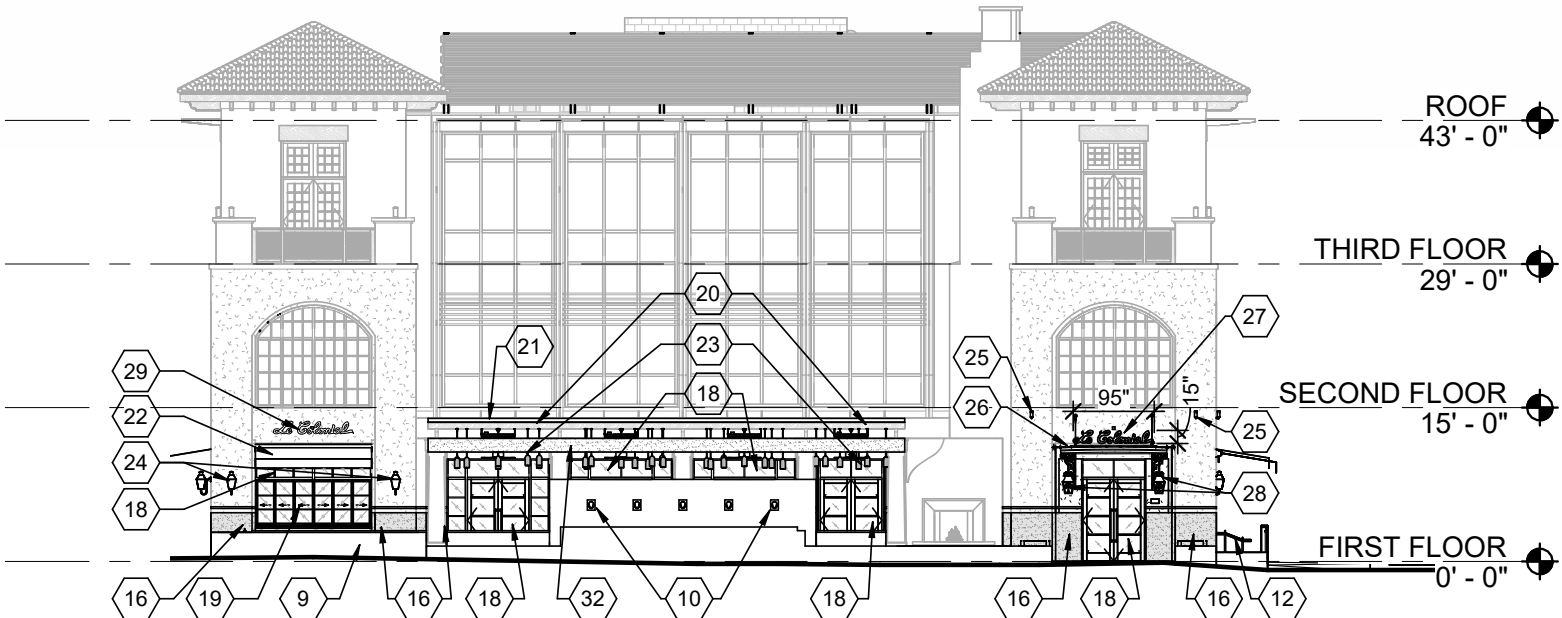
SHEET KEYNOTES

- 1 FUTURE WATER FEATURE DELETED
- 2 PORTION OF EXISTING WALL REMOVED FOR LEVEL PATIO
- 3 RAILING REMOVED
- 4 COLUMN ENCLOSURE REMOVED
- 5 AWNING REMOVED
- 6 TOP 2X2 PURLINS REMOVED
- 7 METAL AWNING REMOVED
- 8 EXISTING STOREFRONT REMOVED
- 9 PLANTER WALL
- 10 WATER FEATURE
- 11 6" CMU WITH 7/8" STUCCO AND 2" STONE CAP; MATCH BASE BUILDING MATERIALS
- 12 RAILING
- 13 CONCRETE BANQUETTE
- 14 CONCRETE TILE FLOOR FINISH
- 15 EXTERIOR INFILL WALL WITH STUCCO FINISH
- 16 WAINSCOT PAINTED ON EXISTING STUCCO AS SHOWN
- 17 EXTERIOR INFILL WALL WITH STONE FINISH
- 18 EXTERIOR DOOR/WINDOW SYSTEM
- 19 EXTERIOR SLIDING DOOR SYSTEM
- 20 EXISTING TONNELLE STRUCTURE PAINTED BLACK
- 21 CLEAR CORRUGATED POLYCARBONATE PANEL WITH DECORATIVE BAMBOO GRID
- 22 RETRACTABLE AWNING WITH WIND SENSOR
- 23 LIGHTING FIXTURES, CEILING FANS, AND HEATERS MOUNTED TO TONNELLE STRUCTURE
- 24 LIGHTING FIXTURE MOUNTED TO BUILDING
- 25 UPLIGHT FIXTURE MOUNTED TO BUILDING
- 26 MARQUEE CANOPY
- 27 MARQUEE MOUNTED SIGNAGE
- 28 LIGHTING FIXTURE MOUNTED TO MARQUEE CANOPY
- 29 SIGNAGE MOUNTED TO BUILDING
- 30 GATE WITH SELF-CLOSING GRAVITY HINGES AND NO LATCH; MATCH RAILING DESIGN
- 31 PORCELAIN PAVERS
- 32 STUCCO BEAM ENCLOSURE



PREVIOUSLY APPROVED

SCALE: 1/16" = 1'-0"



PROPOSED

SCALE: 1/16" = 1'-0"

West Elevations

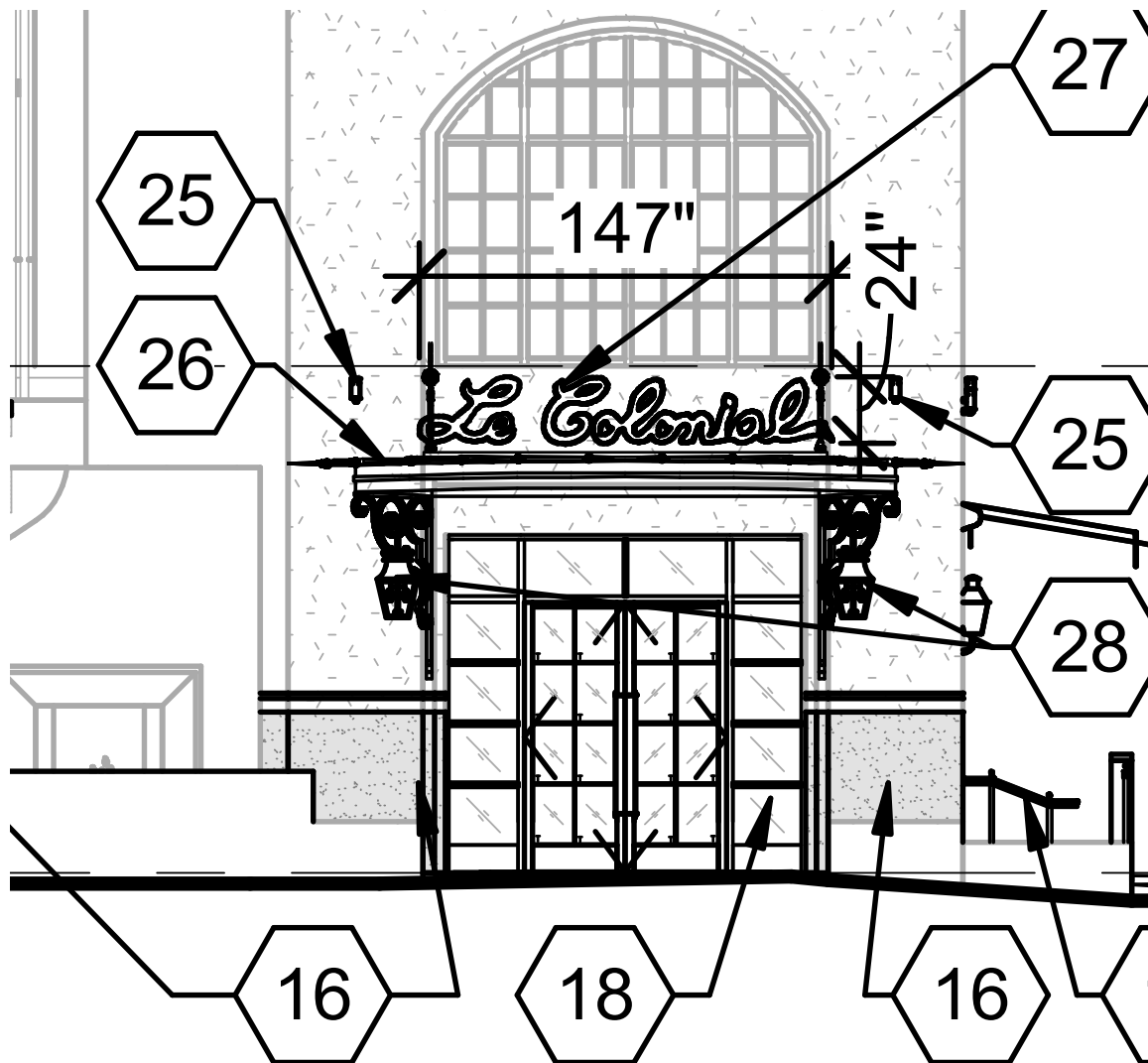
Le Colonial | Delray Beach

Le Colonial

C:\Rev\13588 Le Colonial Delray Beach_R22_kittridge@knauerinc.com.rvt
03/22/2022 11:55:15 PM

KNAUER

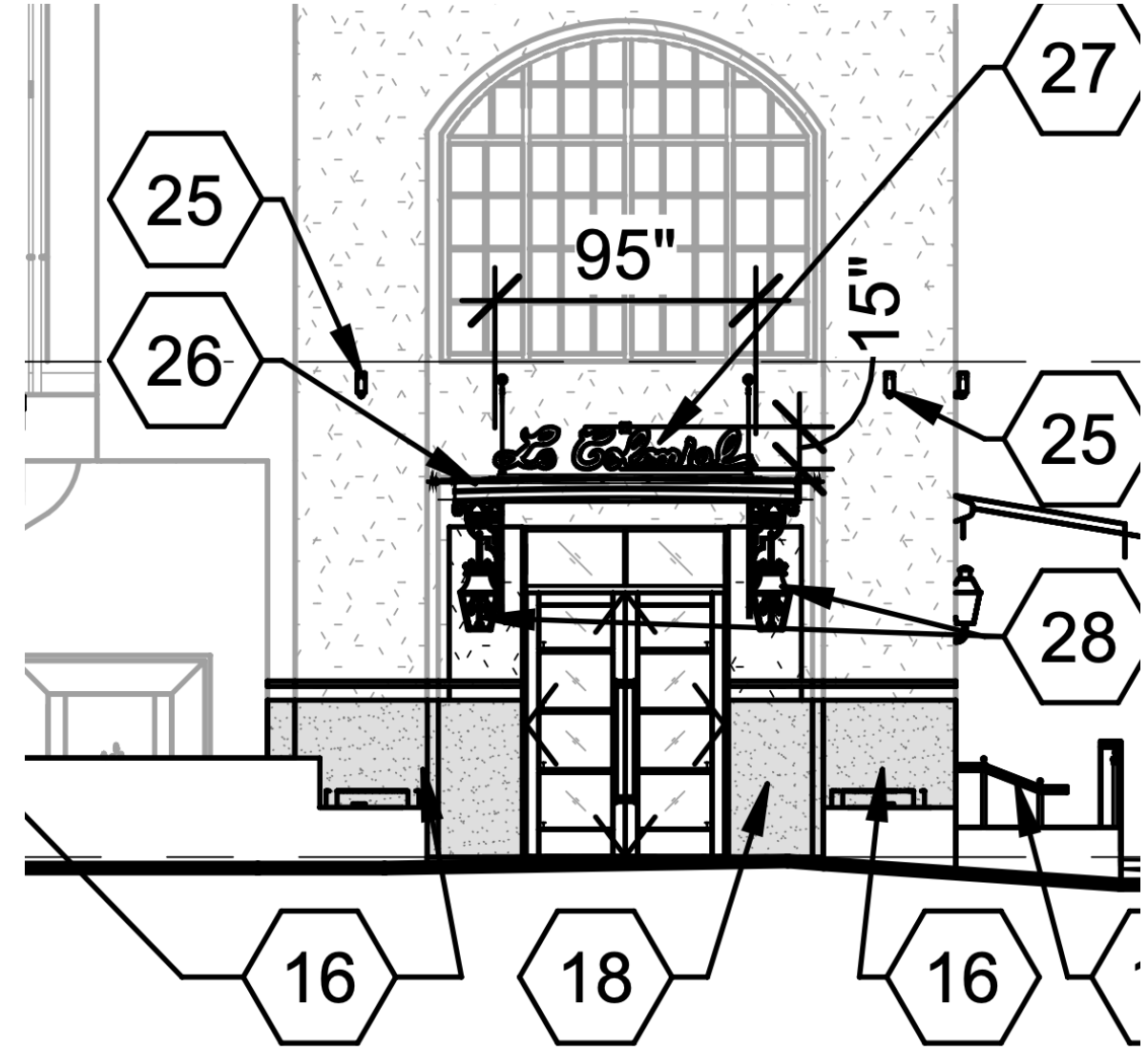
KNAUER <small>Knaue Incorporated 226 Green Bay Road Highwood, IL 60040 (847) 948-9500 www.knauerinc.com</small>		03/22/2022		03/22/2022	
SPRAB SUBMITTAL LE COLONIAL ATLANTIC CROSSING BUILDING 1 603 E ATLANTIC AVENUE DELRAY BEACH, FLORIDA 33483		DATE		DESCRIPTION	
PROJECT NO: 3588 DRAWN BY: JK CHECKED BY: SO © 2022 KNAUER INCORPORATED		MARK		DATE	
WEST ELEVATIONS		21		55	



Previously Approved



Brand Entrance



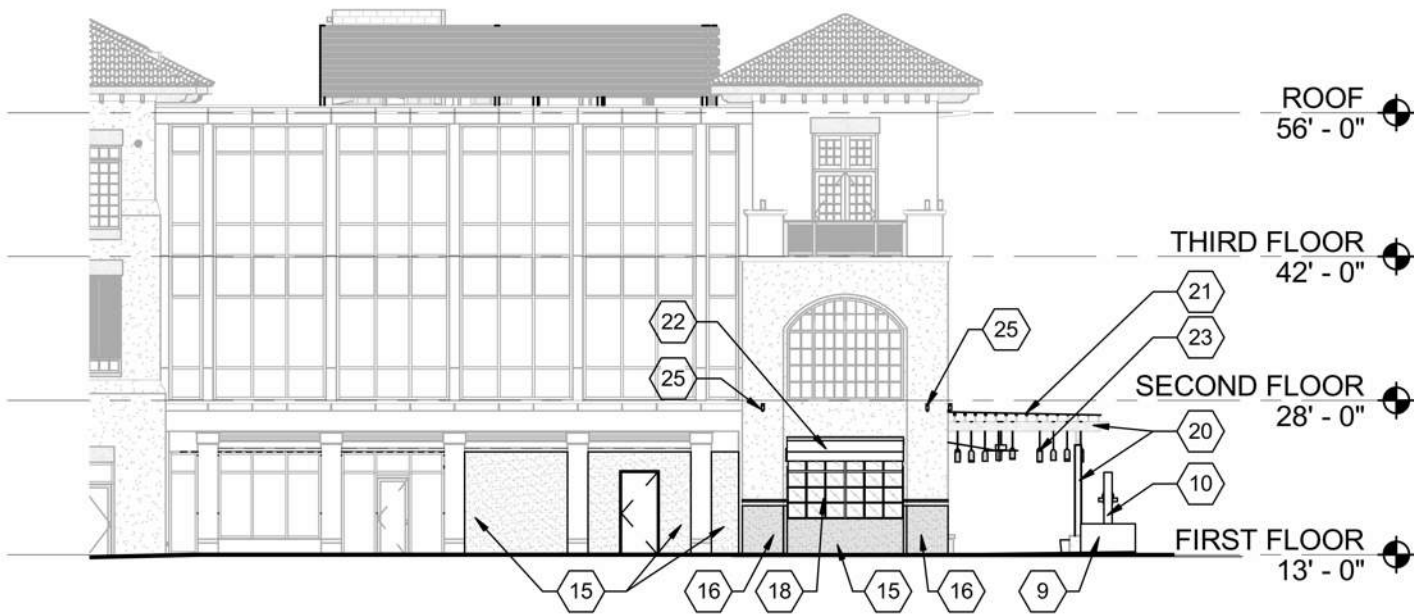
Proposed Smaller Marquee & Signage
No Sidelites

3588 Le Colonial Delray Beach_R22_jktridg@knauerinc.com.rvt
3/21/2022 11:55:36 PM

KNAUER

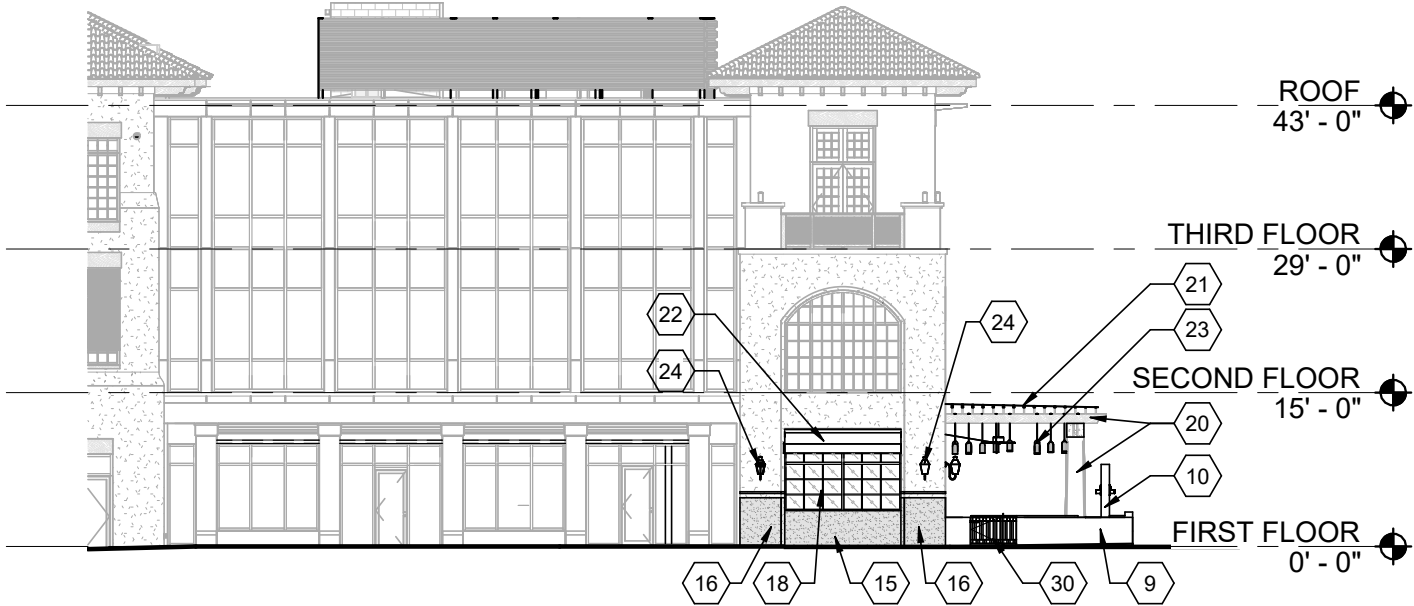
SHEET KEYNOTES

- 1 FUTURE WATER FEATURE DELETED
- 2 PORTION OF EXISTING WALL REMOVED FOR LEVEL PATIO
- 3 RAILING REMOVED
- 4 COLUMN ENCLOSURE REMOVED
- 5 AWNING REMOVED
- 6 TOP 2X2 PURLINS REMOVED
- 7 METAL AWNING REMOVED
- 8 EXISTING STOREFRONT REMOVED
- 9 PLANTER WALL
- 10 WATER FEATURE
- 11 6" CMU WITH 7/8" STUCCO AND 2" STONE CAP; MATCH BASE BUILDING MATERIALS
- 12 RAILING
- 13 CONCRETE BANQUETTE
- 14 CONCRETE TILE FLOOR FINISH
- 15 EXTERIOR INFILL WALL WITH STUCCO FINISH
- 16 WAINSCOT PAINTED ON EXISTING STUCCO AS SHOWN
- 17 EXTERIOR INFILL WALL WITH STONE FINISH
- 18 EXTERIOR DOOR/WINDOW SYSTEM
- 19 EXTERIOR SLIDING DOOR SYSTEM
- 20 EXISTING TONNELLE STRUCTURE PAINTED BLACK
- 21 CLEAR CORRUGATED POLYCARBONATE PANEL WITH DECORATIVE BAMBOO GRID
- 22 RETRACTABLE AWNING WITH WIND SENSOR
- 23 LIGHTING FIXTURES, CEILING FANS, AND HEATERS MOUNTED TO TONNELLE STRUCTURE
- 24 LIGHTING FIXTURE MOUNTED TO BUILDING
- 25 UPLIGHT FIXTURE MOUNTED TO BUILDING
- 26 MARQUEE CANOPY
- 27 MARQUEE MOUNTED SIGNAGE
- 28 LIGHTING FIXTURE MOUNTED TO MARQUEE CANOPY
- 29 SIGNAGE MOUNTED TO BUILDING
- 30 GATE WITH SELF-CLOSING GRAVITY HINGES AND NO LATCH; MATCH RAILING DESIGN
- 31 PORCELAIN PAVERS
- 32 STUCCO BEAM ENCLOSURE



PREVIOUSLY APPROVED

SCALE: 1/16" = 1'-0"



PROPOSED

SCALE: 1/16" = 1'-0"

West Elevations

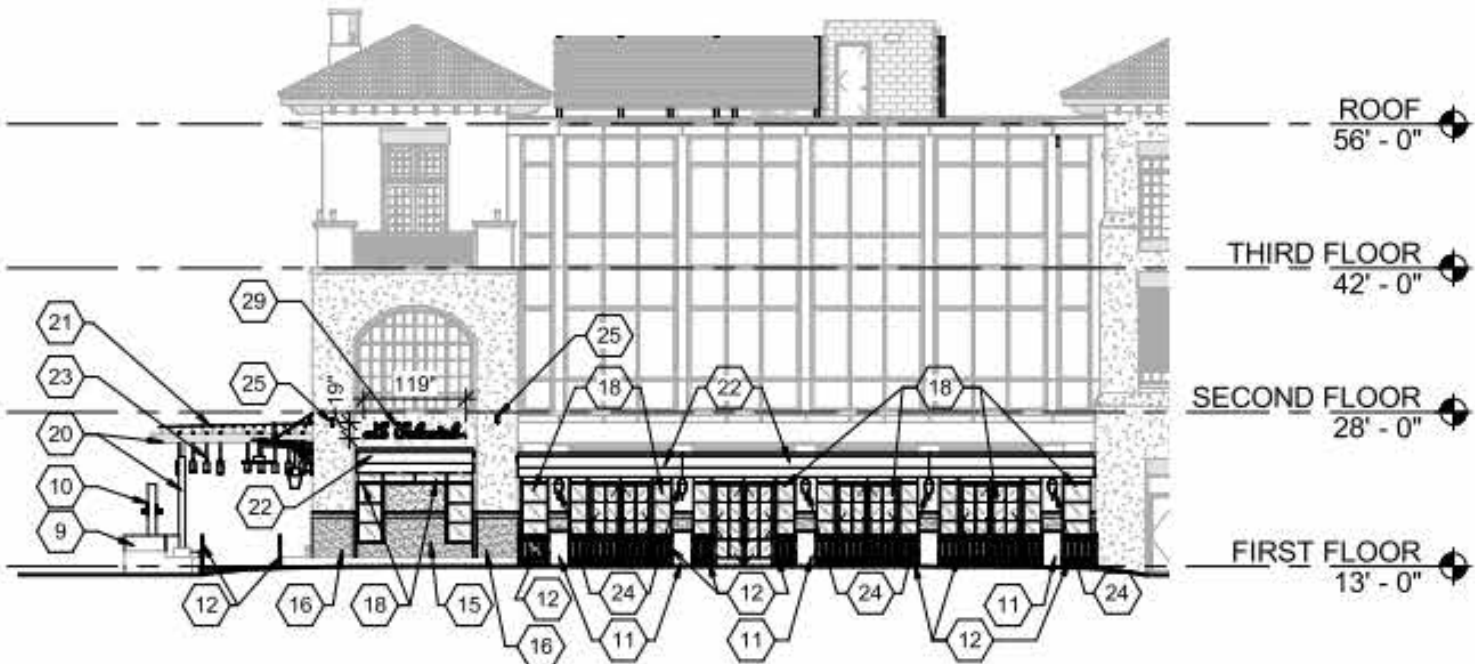
Le Colonial | Delray Beach

Le Colonial

KNAUER		Knauer Incorporated 2205 Green Bay Road Ft. Lauderdale, FL 33304 (847) 948-9500 www.knauerinc.com	
SPRAB SUBMITTAL		03/22/2022	DESCRIPTION
LE COLONIAL		DATE	MARK
ATLANTIC CROSSING			
BUILDING 1			
603 E ATLANTIC AVENUE			
DELRAY BEACH, FLORIDA 33483			
PROJECT NO: 3588		© 2022 KNAUER INCORPORATED	
DRAWN BY: JK			
CHECKED BY: SO			
NORTH ELEVATIONS		2.2	

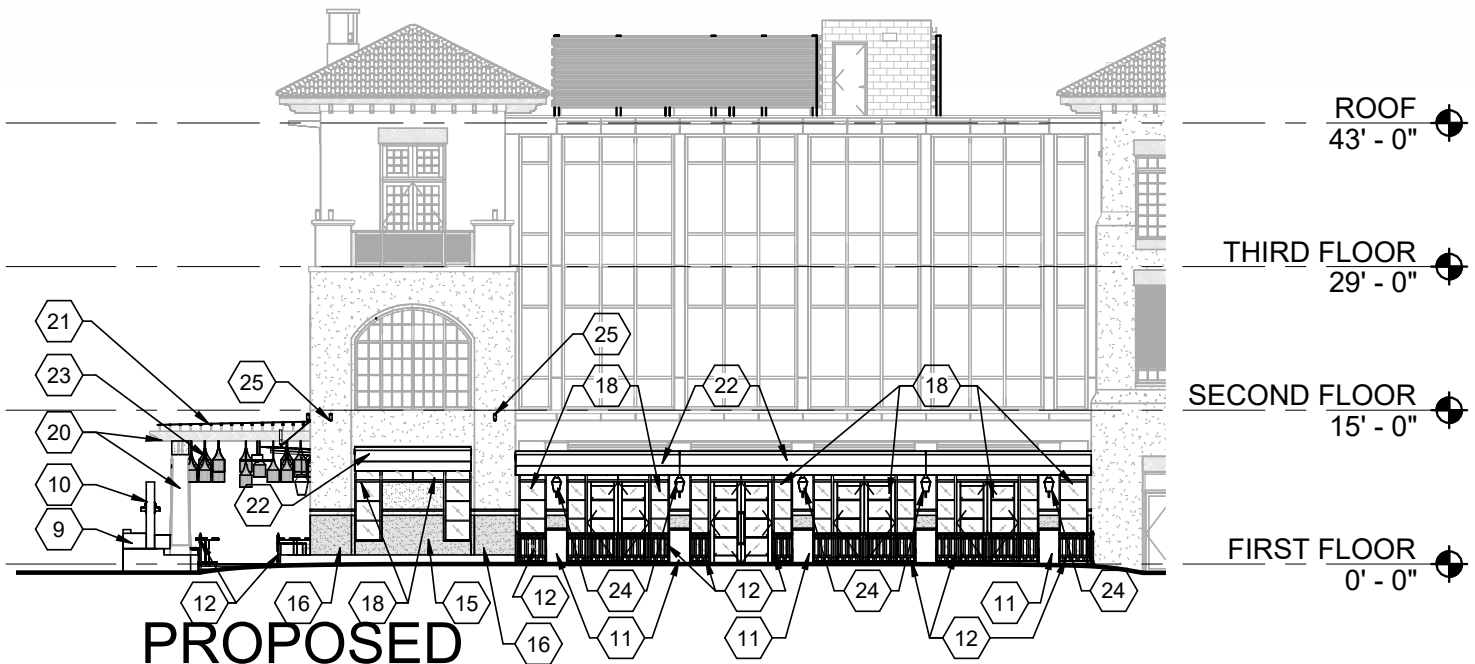
SHEET KEYNOTES

- 1 FUTURE WATER FEATURE DELETED
- 2 PORTION OF EXISTING WALL REMOVED FOR LEVEL PATIO
- 3 RAILING REMOVED
- 4 COLUMN ENCLOSURE REMOVED
- 5 AWNING REMOVED
- 6 TOP 2X2 PURLINS REMOVED
- 7 METAL AWNING REMOVED
- 8 EXISTING STOREFRONT REMOVED
- 9 PLANTER WALL
- 10 WATER FEATURE
- 11 6" CMU WITH 7/8" STUCCO AND 2" STONE CAP; MATCH BASE BUILDING MATERIALS
- 12 RAILING
- 13 CONCRETE BANQUETTE
- 14 CONCRETE TILE FLOOR FINISH
- 15 EXTERIOR INFILL WALL WITH STUCCO FINISH
- 16 WAINSCOT PAINTED ON EXISTING STUCCO AS SHOWN
- 17 EXTERIOR INFILL WALL WITH STONE FINISH
- 18 EXTERIOR DOOR/WINDOW SYSTEM
- 19 EXTERIOR SLIDING DOOR SYSTEM
- 20 EXISTING TONNELLE STRUCTURE PAINTED BLACK
- 21 CLEAR CORRUGATED POLYCARBONATE PANEL WITH DECORATIVE BAMBOO GRID
- 22 RETRACTABLE AWNING WITH WIND SENSOR
- 23 LIGHTING FIXTURES, CEILING FANS, AND HEATERS MOUNTED TO TONNELLE STRUCTURE
- 24 LIGHTING FIXTURE MOUNTED TO BUILDING
- 25 UPLIGHT FIXTURE MOUNTED TO BUILDING
- 26 MARQUEE CANOPY
- 27 MARQUEE MOUNTED SIGNAGE
- 28 LIGHTING FIXTURE MOUNTED TO MARQUEE CANOPY
- 29 SIGNAGE MOUNTED TO BUILDING
- 30 GATE WITH SELF-CLOSING GRAVITY HINGES AND NO LATCH; MATCH RAILING DESIGN
- 31 PORCELAIN PAVERS
- 32 STUCCO BEAM ENCLOSURE



PREVIOUSLY APPROVED

SCALE: 1/16" = 1'-0"



PROPOSED

SCALE: 1/16" = 1'-0"

South Elevation

Le Colonial | Delray Beach

Le Colonial

KNAUER		(847) 948-9500 www.knaufinc.com	
Knauf Incorporated 10000 Highway 100 Highwood, IL 60040			
		03/22/2022	DESCRIPTION
		DATE	MARK
SPRAB SUBMITTAL LE COLONIAL ATLANTIC CROSSING BUILDING 603 E ATLANTIC AVENUE DELRAY BEACH, FLORIDA 33483			
PROJECT NO: 3588			
DRAWN BY: JK			
CHECKED BY: SO			
© 2022 KNAUF INCORPORATED			
SOUTH ELEVATIONS			
		23	



Signage Change

Smaller Marquee + Signage

Enhanced Landscaping

Pergola – Existing Columns + Add White Stucco Beam

Enhanced Landscaping

KNAUER

Le Colonial | Delray Beach

Le Colonial 59



Lower Bamboo Ceiling

Smaller Marquee + Signage

No Sidelites

Pergola - Add White Stucco Beam

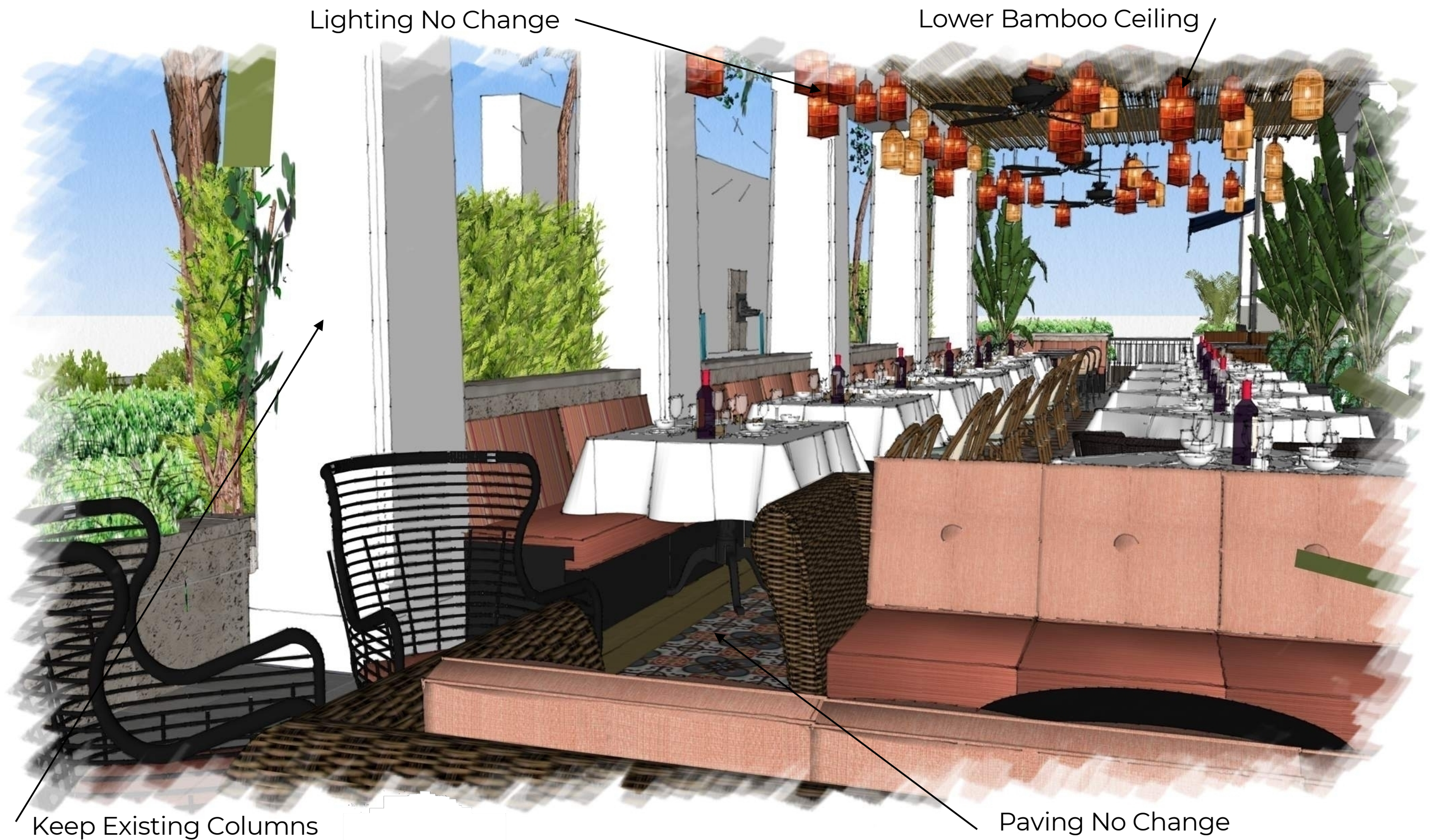
Enhanced Paving

Enhanced Landscaping

KNAUER

Le Colonial | Delray Beach

Le Colonial



Keep Existing Columns

KNAUER

Le Colonial | Delray Beach

Paving No Change

Le Colonial 61



Previously Approved



Signage Change

Lower Bamboo Ceiling

Built-In Planters

Proposed