
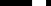
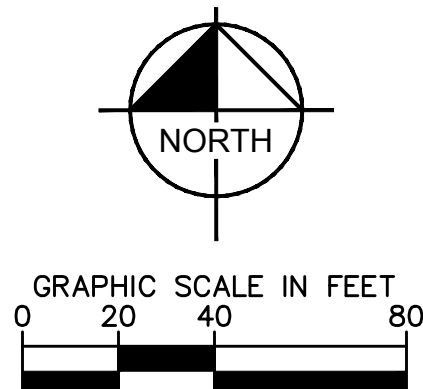


[illegible]

 LEASE LINE/AFFECTED AREA
 PROPOSED PARKING STALL COUNT
 PROPOSED CONCRETE



SITE DATA

PROJECT INFORMATION		
PROJECT NAME	BED BATH AND BEYOND PLAZA	
PBC PCN#	12-42-46-13-00-000-7070	
ZONING DESIGNATION	12-42-46-13-30-001-0000 (SEE NOTE #1)	
FUTURE LAND USE	PC AND GC (FOUR CORNERS OVERLAY)	
LAND AREA	COMMERCIAL	
	404,301 SF / 9.2815 AC	
	CODE PROVISION	EXISTING
GROSS BUILDING AREA (SF)	N/A	89,373
AUTO RENTAL FACILITY	MAX 5%	1,983 (2.3%)
LOT COVERAGE	75% MAXIMUM	87.92%
OPEN SPACE	25% MINIMUM	48,801 (12%)
PC ZONING DISTRICT CRITERIA		
PC	REQUIRED	EXISTING
MINIMUM LOT SIZE (SF)	10,000	404,301
MINIMUM LOT WIDTH (FT)	50	621
MINIMUM LOT DEPTH (FT)	100	657
MINIMUM LOT FRONTAGE (FT)	50	1,243
MINIMUM OPEN SPACE (SF & %)	25	48,801 (12%)
* EXISTING NONCONFORMITY REDUCED, AFFECTED AREA IS IN EXCESS OF 25%		
SETBACKS (FT)	REQUIRED	PROVIDED
FRONT	N/A*	36'
STREET	10	34.7'
SIDE INTERIOR	10	50.1'
REAR	10	35'
*PER SECTION 4.4.9(G)(3)E USE FOUR CORNERS OVERLAY PROVISION WHERE IN CONFLICT		
MAXIMUM BUILDING HEIGHT	± 29' MAX (MEASURED FROM CROWN OF ADJACENT ROAD)	
PARKING	PARKING RATIO	REQUIRED PARKING
SHOPPING CENTER (76,158 SF)	4/1,000 (4.6.9(C)(3)(e.))	305
CVS (13,215 SF)	4.5/1,000 (4.6.9(C)(3)(g))	60
TOTAL REQUIRED PARKING		365
TOTAL PROVIDED PARKING		374*

* PER ARTICLE 4.4 SECTION 4.4.12 IN REGARDS TO AN AUTOMOTIVE RENTAL FACILITY – VEHICLE STORAGE IS LIMITED TO NO MORE THAN 10 PERCENT OF THE OFF-STREET PARKING SPACES, AND IN NO EVENT SHALL EXCEED 20 OFF-STREET PARKING SPACES FOR EACH ESTABLISHMENT

NOTE:

1. NO DRIVEWAYS OR POINTS OF ACCESS ON MILITARY TRAIL FOR ADJACENT PROPERTIES WITHIN 50' OF SUBJECT SITE.

Kimley»»Horn

1615 S CONGRESS AVE, SUITE 201, DELRAY BEACH, FL 33445
PHONE: 561-330-2345 FAX: 561-863-8175
WWW.KIMLEY-HORN.COM CA 00000696

CLASS III SITE PLAN

BED, BATH AND
BEYOND PLAZA
PREPARED FOR
ENTERPRISE RENT-A-CAR
FURRAY BEACH

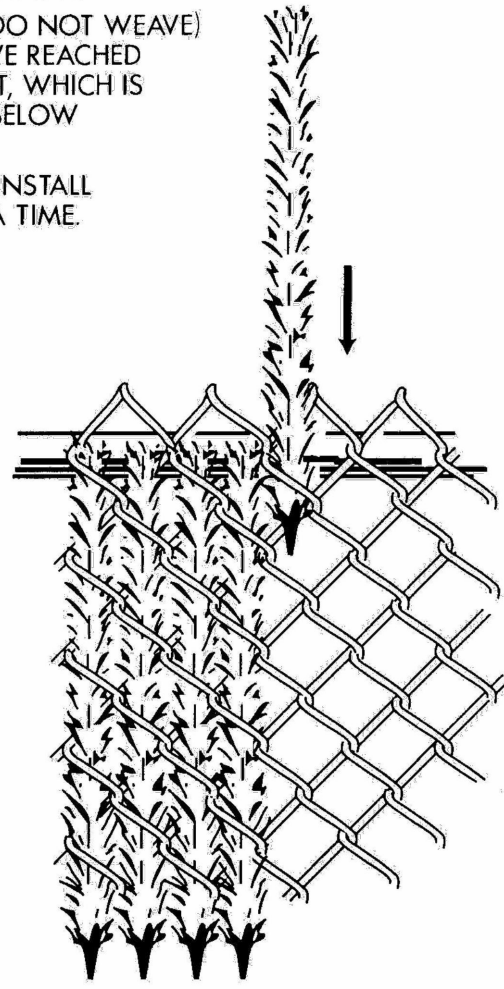
SHEET NUMBER
C1.00

This document, together with the concepts and designs presented herein, as an instrument of service, is intended only for the specific purpose and client for which it was prepared. Reuse of and improper reliance on this document without written authorization and adaptation by Kimley-Horn and Associates, Inc. shall be without liability to Kimley-Horn and Associates, Inc.

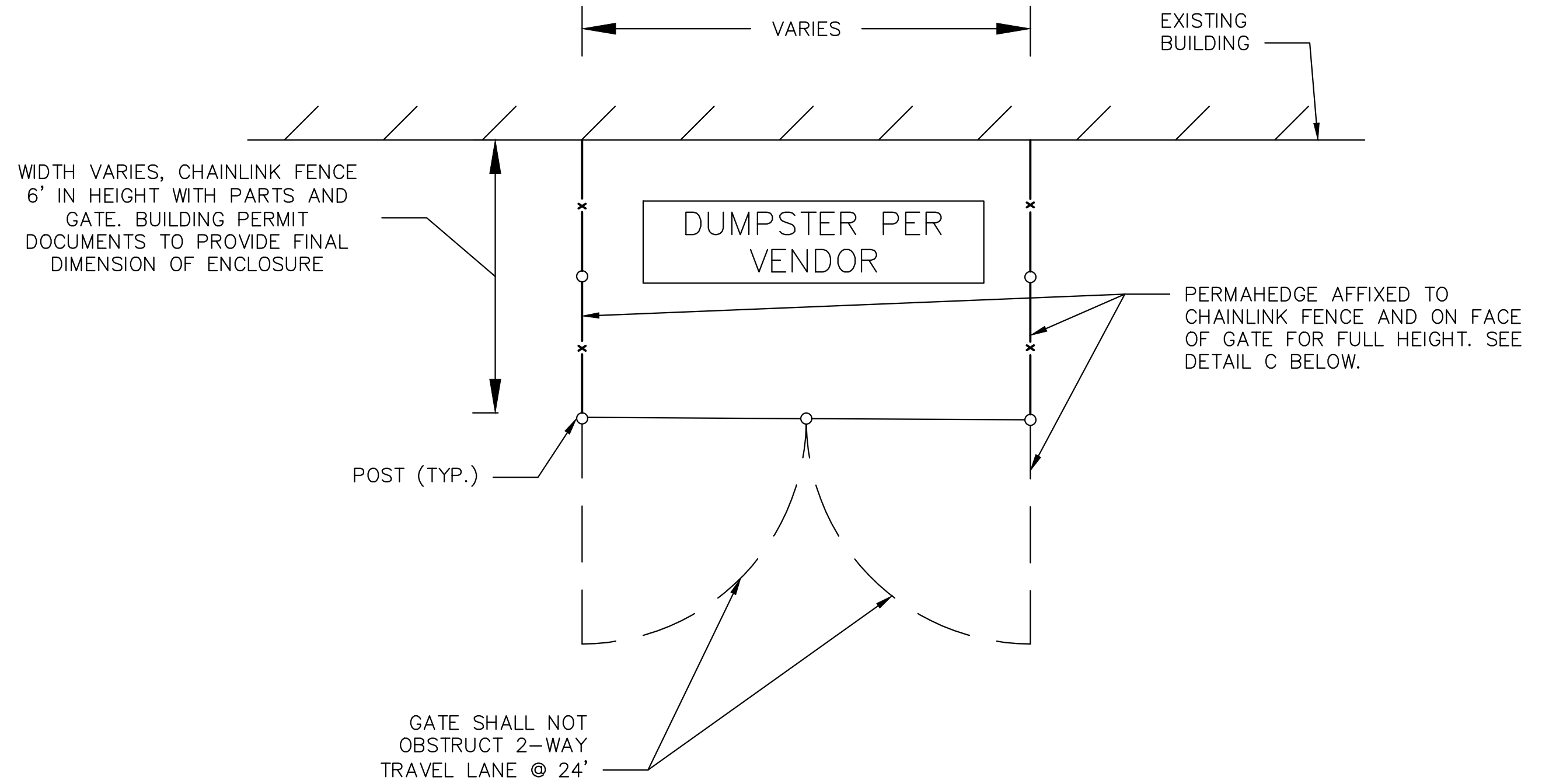
AMERICAN PERMAHEDGE™

INSTALLATION INSTRUCTIONS

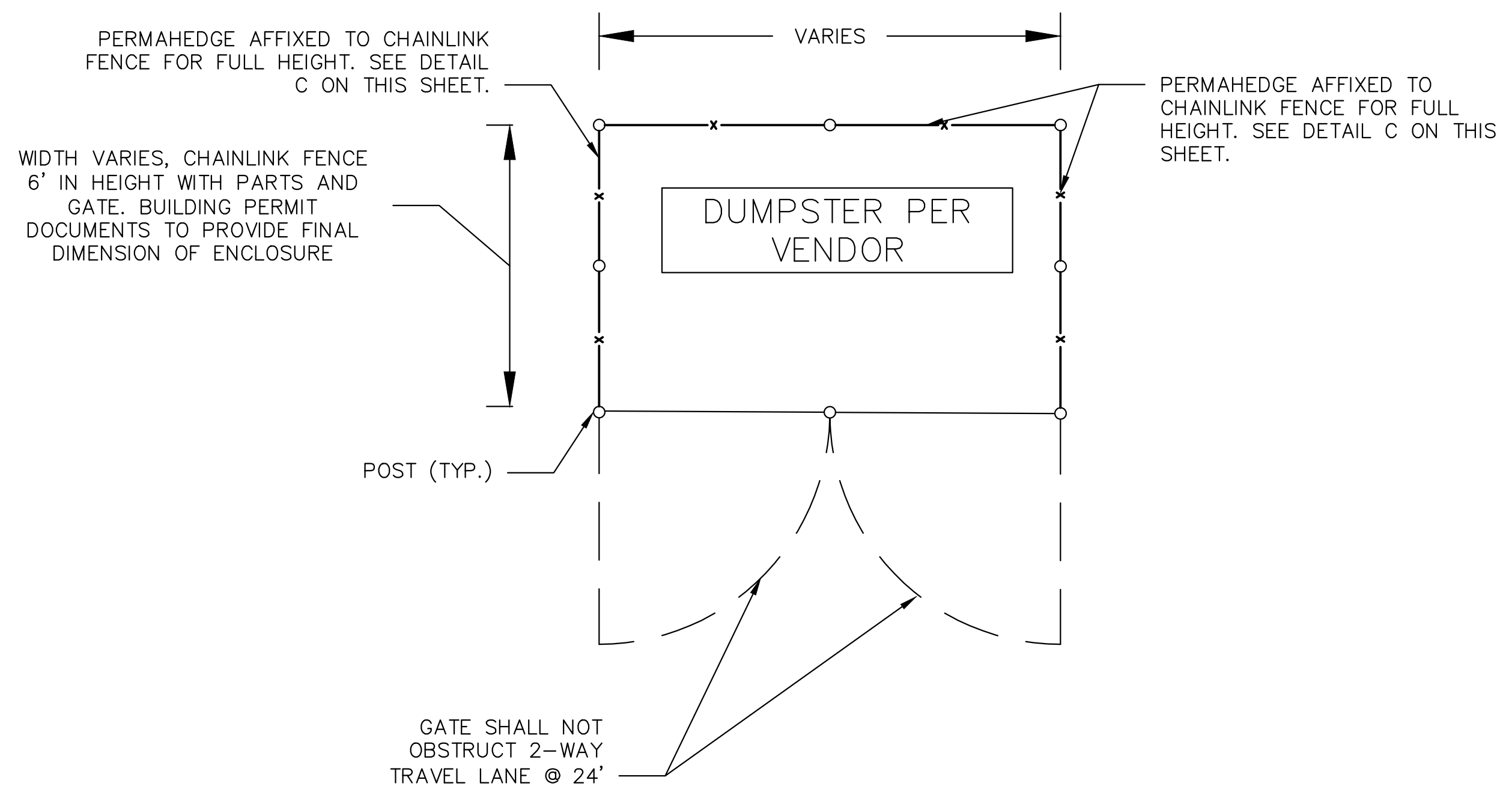
1. START AT ONE END, AT THE TOP OF THE FENCE
2. SLIDE ONE PIECE DOWN VERTICALLY, WITH POINTED END DOWN.
3. SLIDE DOWN (DO NOT WEAVE) UNTIL YOU HAVE REACHED DESIRED HEIGHT, WHICH IS USUALLY JUST BELOW TOP OF FENCE.
4. CONTINUE TO INSTALL ONE PIECE AT A TIME.




 AMERICAN PERMAHEDGE
 DETAIL
 NOT TO SCALE

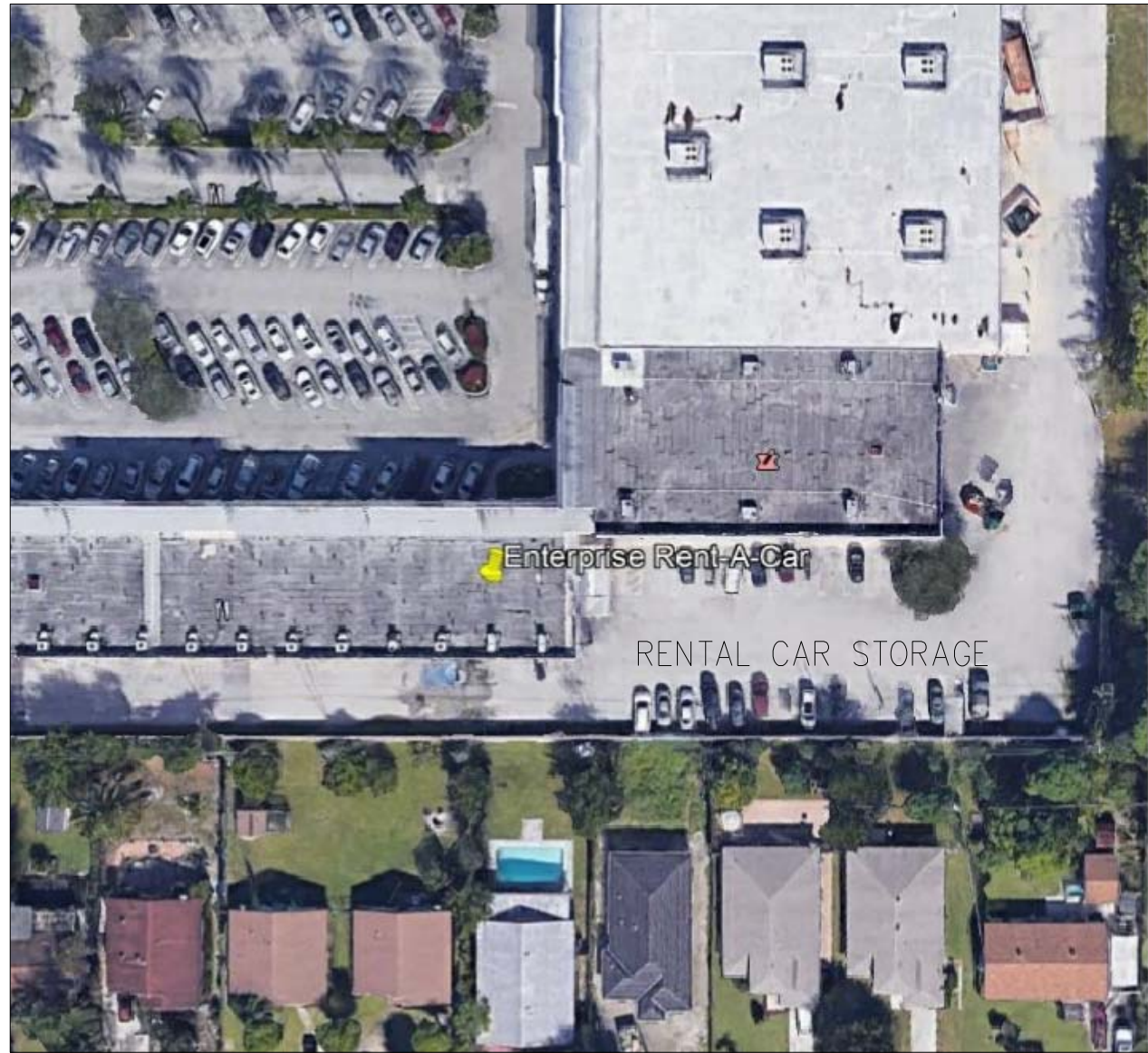


(A) DUMPSTER ENCLOSURE DETAIL
ADJACENT TO BUILDING
NOT TO SCALE



B DUMPSTER ENCLOSURE DETAIL
FREESTANDING
NOT TO SCALE

SHEET NUMBER C1.10	BED, BATH AND BEYOND PLAZA PREPARED FOR ENTERPRISE RENT-A-CAR FL DELRAY BEACH	CLASS III SITE PLAN	KHA PROJECT DATE _____ SCALE AS SHOWN DESIGNED BY _____ DRAWN BY _____ CHECKED BY _____ DATE: _____	LICENSED PROFESSIONAL _____	Kimley»Horn 1615 S CONGRESS AVE., SUITE 201, DELRAY BEACH, FL 33445 PHONE: 781-961-7500 FAX: 781-961-7501 WWW.KIMLEY-HORN.COM CA 00006696	No.	REVISIONS	DATE	BY
------------------------------	--	----------------------------	---	--------------------------------	---	-----	-----------	------	----



SITE

AUTOMOTIVE RENTAL FACILITY SITE DATA	
ZONING DISTRICT / OVERLAY	PC AND GC (FOUR CORNERS OVERLAT)
FUTURE LAND USE DESIGNATION	COMMERCIAL
PROPOSED USE	CAR RENTAL AGENCY
MAXIMUM VEHICLE STORAGE SPACES PERMITTED	20 - 10 PER LEASE
MAXIMUM PERMITTED NUMBER OF WASH BAYS	1
PERCENT OF TOTAL BUILDING AREA OCCUPIED BY CAR RENTAL FACILITY = 1983 SF DIVIDED BY 89,373 SF =	2.3%
NOTES:	
1) VACUUMING AND WASHING BY HAND ONLY	
2) THE ACCESS OVERHEAD BAY DOOR TO THE WASHING AND VACUUMING AREA SHALL REMAIN CLOSED DURING THE OPERATION OF ALL MAINTENANCE ACTIVITIES	
3) RUN-OFF FROM THE WASHING OPERATIONS SHALL BE COLLECTED AND CONTAINED ON SITE	
4) ALL OTHER VEHICLE SERVICES, INCLUDING REPAIR, MAINTENANCE, OIL CHANGE AND FUELING SHALL NOT BE PERMITTED ONSITE	
5) "CUSTOMER PICK UP AND DROP OFF TO BE CONDUCTED AT THE FRONT OF THE BUILDING ONLY". CUSTOMERS ARE NOT TO PICK UP OR DROP OFF VEHICLES AT THE REAR OF THE BUILDING AS PART OF CONDITIONS OF CITY APPROVAL. SIGN TO BE POSTED IN CUSTOMER LOBBY.	
BUILDING AREAS (GROSS)	
OFFICE:	1129 SF
CARWASH:	854 SF
TOTAL:	1983 SF

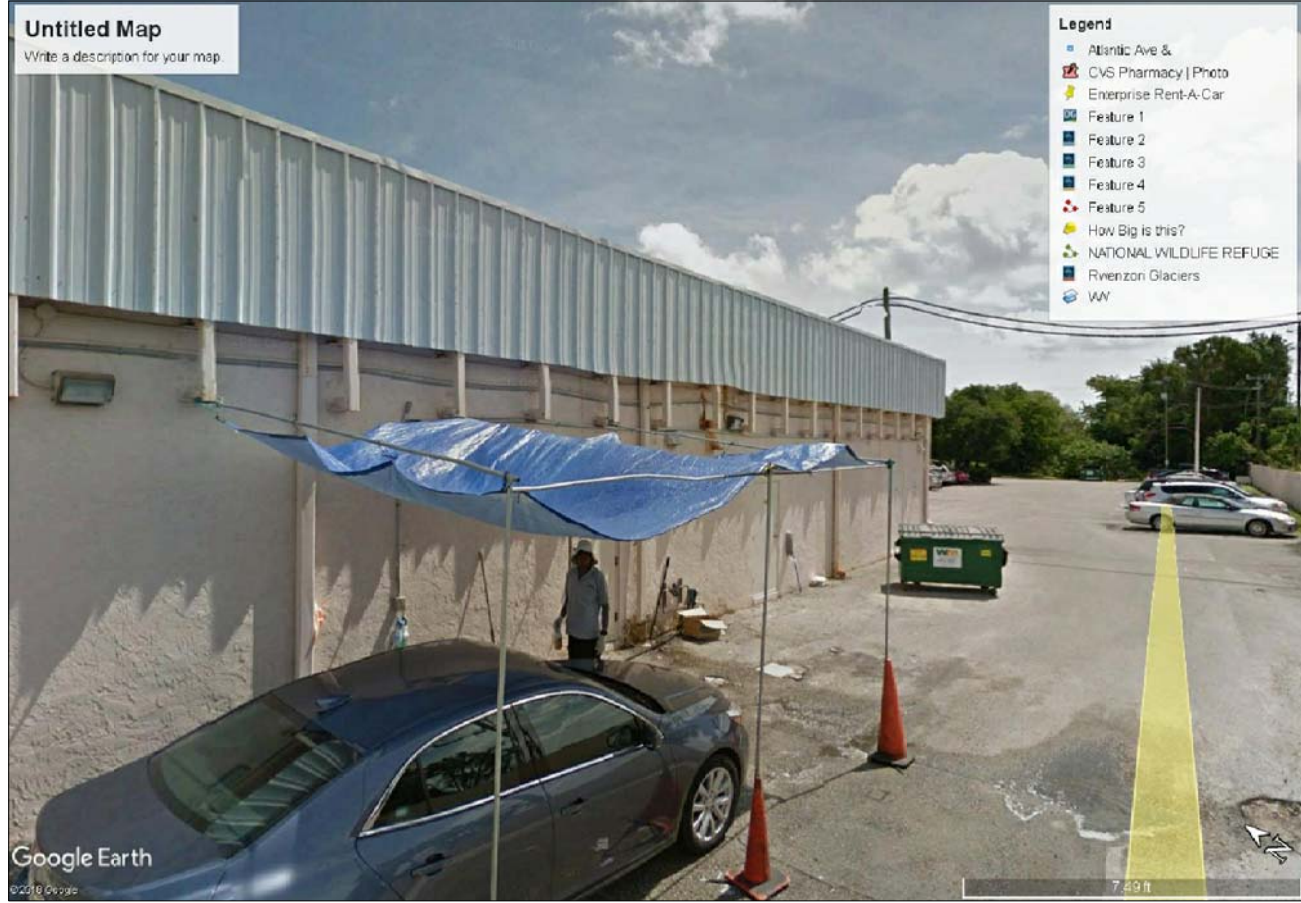
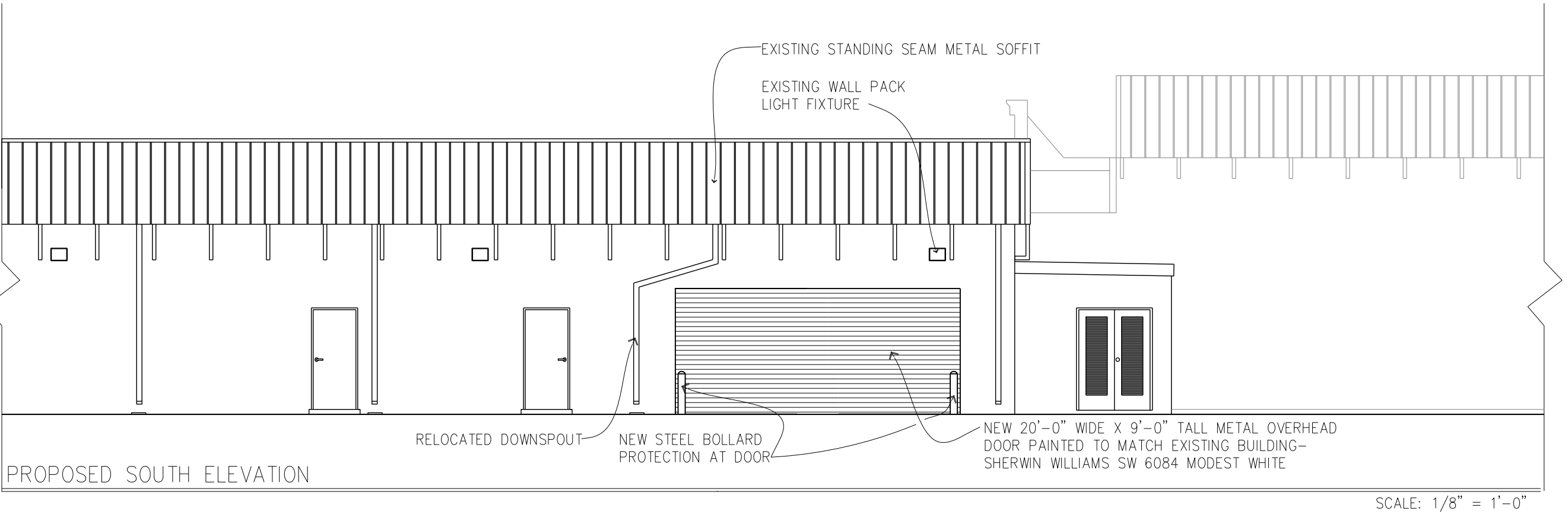
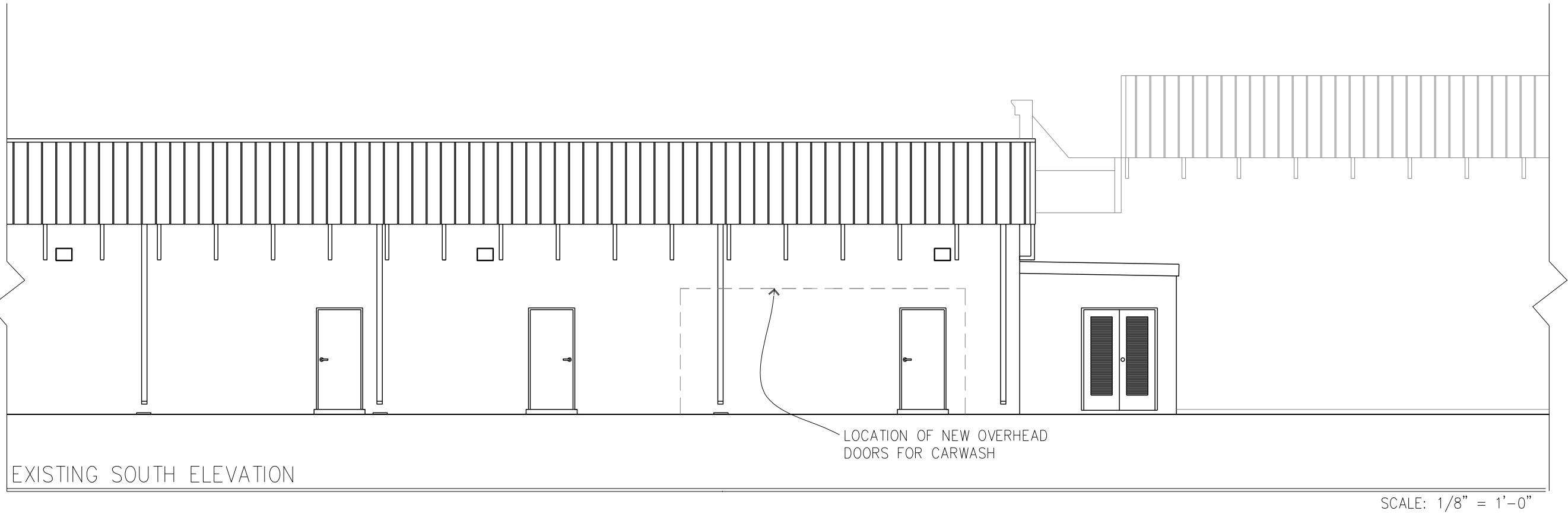


PHOTO 1

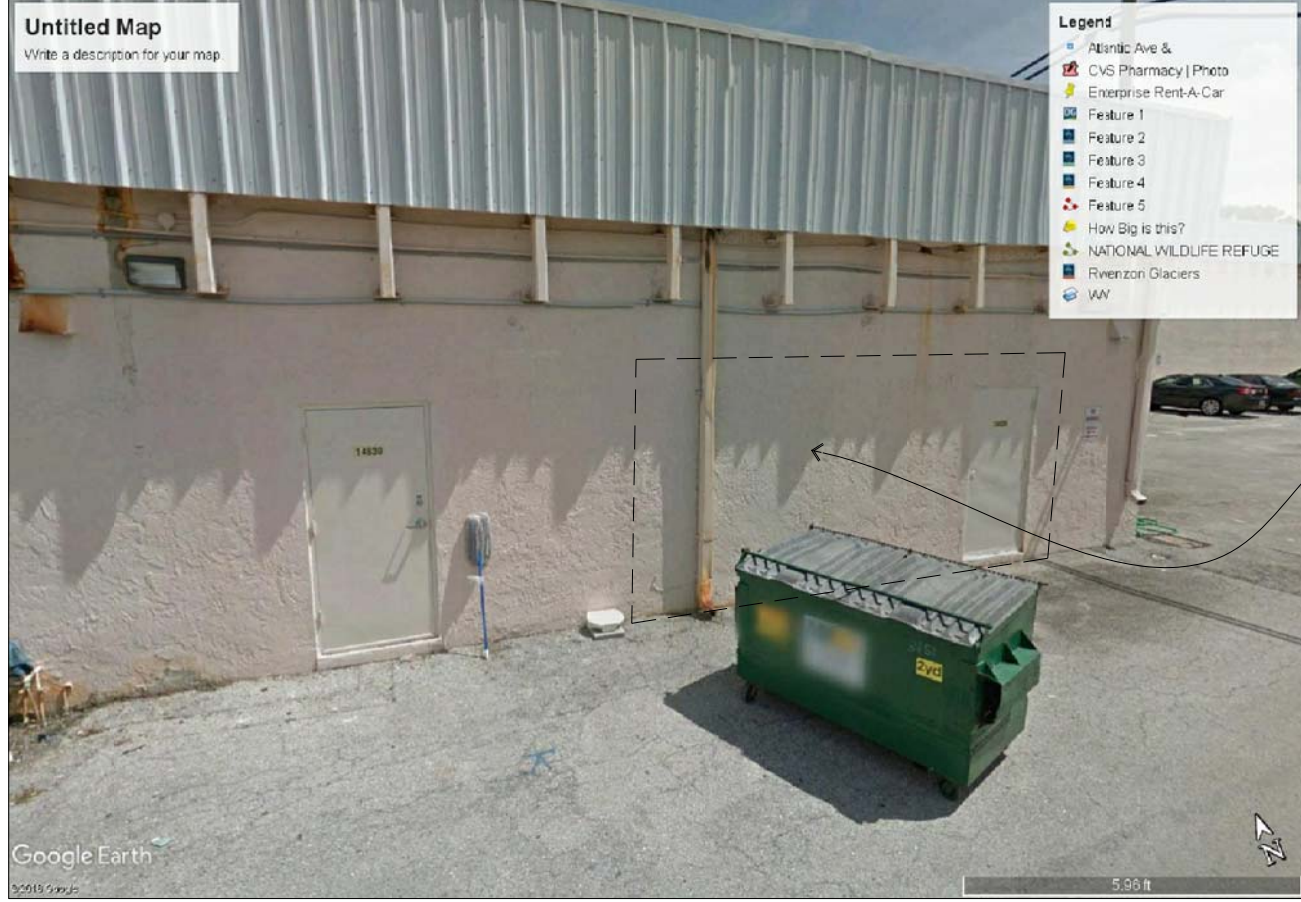
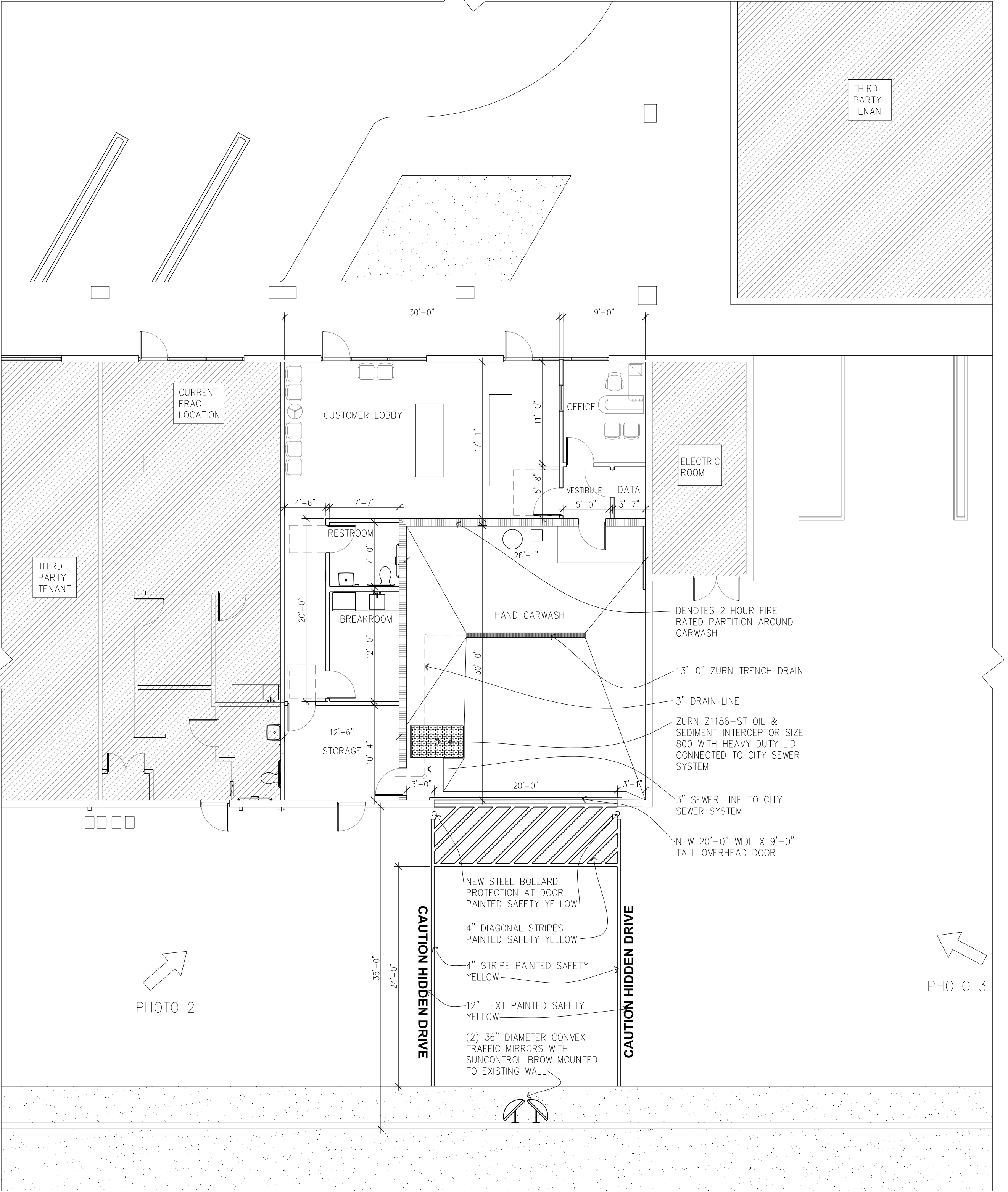
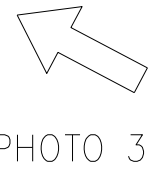
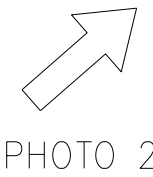
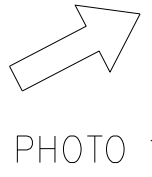


PHOTO 2



PHOTO 3



ERAC DELRAY BEACH – PROPOSED FLOOR PLAN

OIL, SAND, and SEDIMENT INTERCEPTORS



Z1186-ST and Z1188-ST SERIES Zurn Engineered Oil Interceptors with Integral Storage Tank

Zurn Z1186-ST and Z1188-ST Series are designed to incorporate an integral oil storage tank within them. The same practices, as with the standard Z1186 and Z1188 oil interceptors, should be followed with regard to sizing, installation, and flow control usage.

VENTING

The Zurn Z1186-ST and Z1188-ST Series oil interceptor with integral storage tank is furnished with 1-1/2" IPS vent connections located on all sides of the unit to accommodate the installation of the vent piping. Three of the vent connections are located on the oil storage tank, and one vent connection is located on the interceptor body upstream of the double wall trap seal. It is important that the unit be vented using any one of the vent connections provided. This will allow any of the volatile gases rising from the intercepted substances to be carried from the interceptor and storage tank to the atmosphere.

ADJUSTABLE DRAW-OFF

The Zurn oil interceptor with integral storage tank is furnished with an adjustable oil draw-off gate plate. This draw-off creates a passageway for intercepted oils to travel from the main separation chamber to the oil storage tank. The oil draw-off consists of an adjustable gate plate on the inside of the intercepting chamber. The adjustable gate plate can be raised or lowered inside of the interceptor chamber to the proper height for draining off the separated oils and similar light density substances that have separated and floated to the surface of the interceptor chamber.

Thus, after the oils and other substances have accumulated inside the interceptor, they will drain from the interceptor chamber by gravity flow over the internal gate plate. The gate plate shall be adjusted so that its top edge is above the operating water flow level in the interceptor chamber. There is no need to manually skim or dip out the oil, since the oil will drain off by gravity flow over the draw-off gate plate after it has been properly adjusted and tightened.

HOW TO SET ADJUSTABLE DRAW-OFF

The Zurn oil interceptor with integral storage tank should be completely installed and all connections made, including the adjustable draw-off gate plate. Loosen all bolts securing the gate plate as well as those above the gate plate. Slide the gate plate up to its highest position and tighten in place.

Clean water is then run through the oil interceptor at the flow the interceptor is rated for. This establishes the operating water level. The operating water level is marked on the inside of the intercepting chamber. The marking of the operating water level must be done while there is water flowing through the interceptor. If the mark is established at the static water level, excess amounts of water will pass over the draw-off gate plate when the flow rate through the interceptor increases to its rated capacity. In this case, the draw-off gate plate would become submerged.

Loosen the bolts securing the gate plate and slide the gate plate down so that the top edge is 1/8" above the operating water level mark. Tighten bolts securing the gate plate at this level. After the oil interceptor is put into operation and a film of oil and low density substances has accumulated at the surface, the adjustable draw-off setting should be checked by taking samples while the oil interceptor is in operation. If the gate plate is properly set to the correct height, the drawn-off oil should have no water in it. If it is apparent that water is present in the drawn-off oil, the adjustable gate plate should be moved up until only oil travels over the draw-off gate plate.

OIL, SAND, and SEDIMENT INTERCEPTORS



Z1186-ST and Z1188-ST SERIES Zurn Engineered Oil Interceptors with Integral Storage Tank

OPERATION

Figure 1 below shows the conditions inside the interceptor in a "non-operating" mode. It can be seen that the oil has separated itself from the water. The oil is floating on the surface of the water in the main separation compartment and the top of the oil is below the top of the adjustable oil draw-off gate plate (see "How To Set Adjustable Draw-off" section).

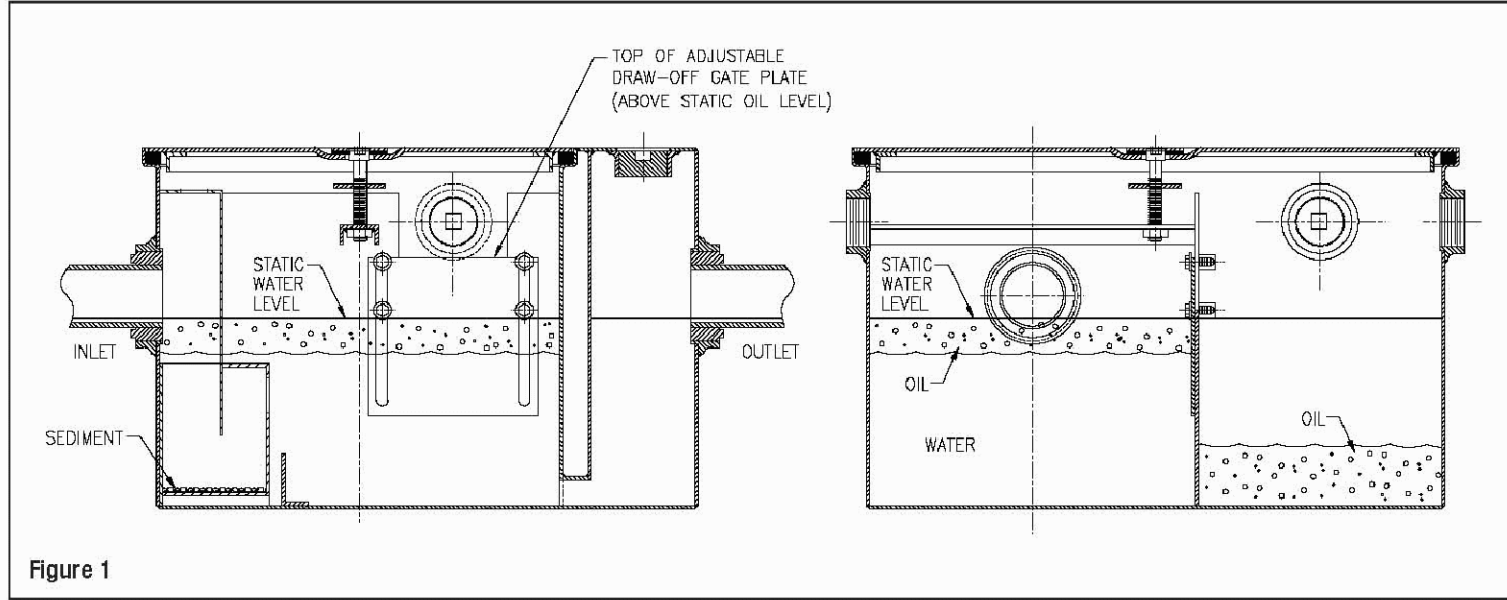


Figure 1

Figure 2 below shows the conditions inside the interceptor in an "operating" or "flowing" mode. The oil/water mixture flows from the inlet piping into the interceptor and causes the oil/water level to rise. The mixture is directed downward into and through a removable sediment bucket. Heavier particles and sediment are collected in the bucket while the oil/water mixture continues through the bucket and is directed into the main separation compartment. The oil separates from the water by rising to the top and is now on the surface of the water. The oil/water level inside the interceptor has risen to a level which puts the layer of oil above the top of the adjustable draw-off gate plate allowing the oil to "spill" over the top of the gate plate and into the oil storage compartment. The water exits the main separation compartment through the outlet opening at the bottom of the unit passing through the outlet trap and into the discharge waste system plumbing.

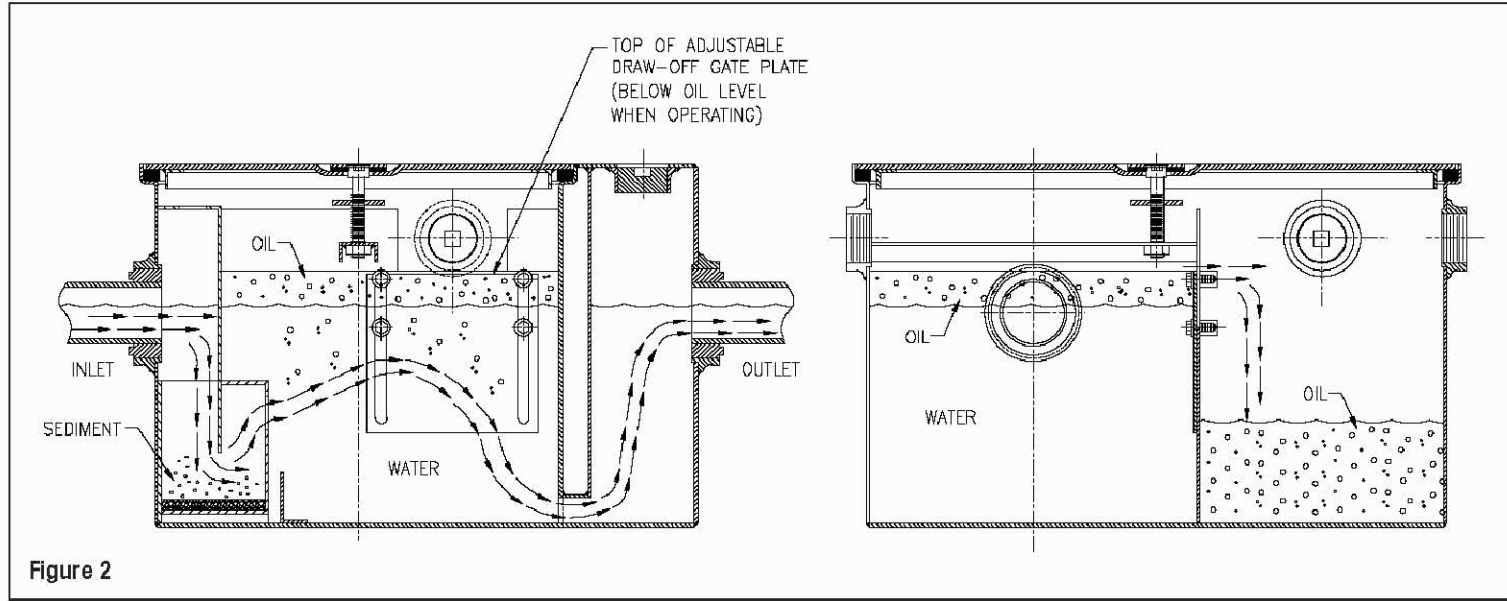


Figure 2

OIL, SAND, and SEDIMENT INTERCEPTORS

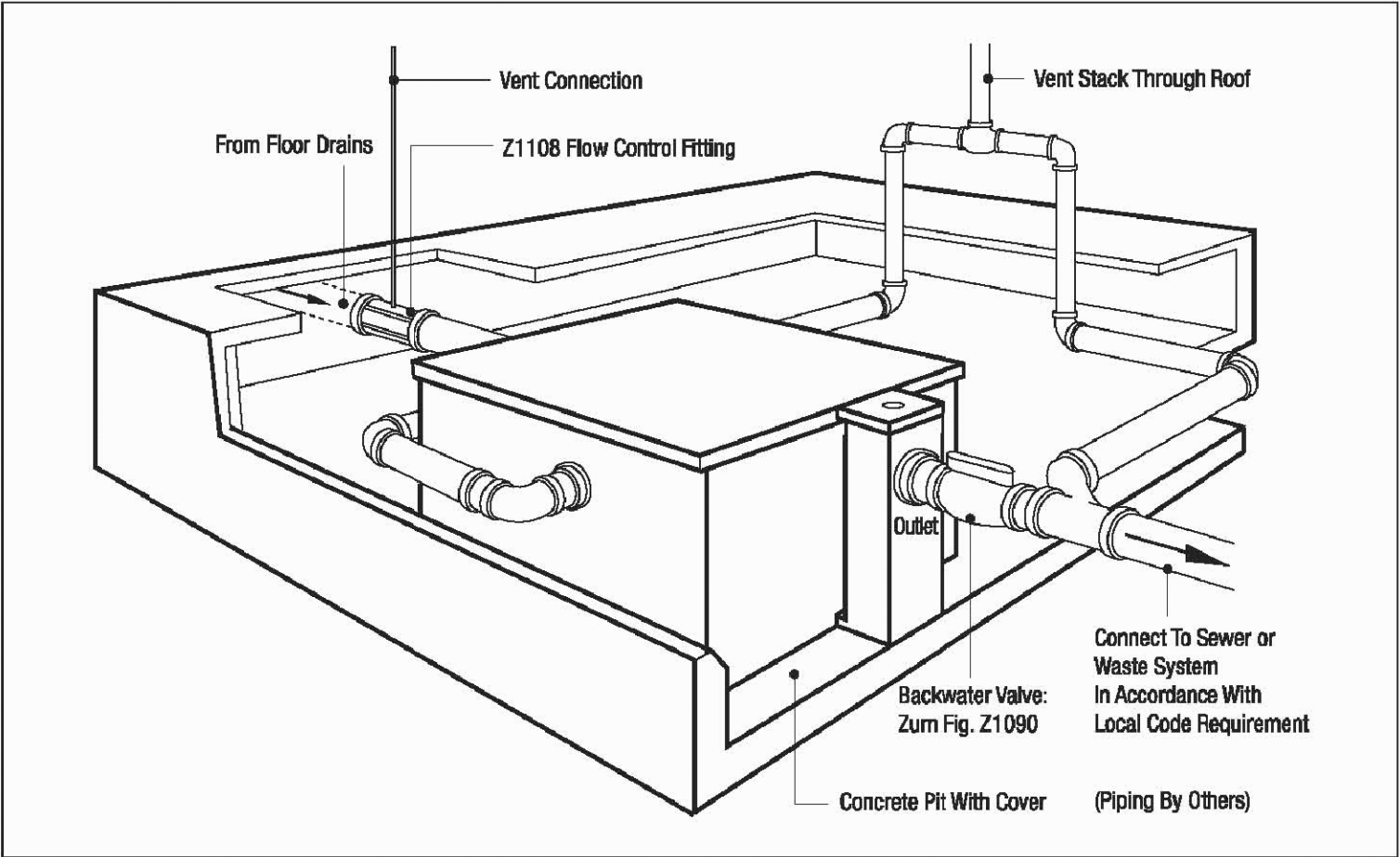


Z1186-ST and Z1188-ST SERIES Zurn Engineered Oil Interceptors with Integral Storage Tank

MAINTENANCE

Periodic checks of the oil storage compartment is recommended. The accumulated oil in the storage compartment should be pumped out before the oil level has risen to the gate plate height. As these periodic checks are made, a general inspection of the interceptor, plumbing connections, and gasketing should be made. Any required maintenance needed should be performed at this time.

Pictured is a Zurn oil interceptor with integral storage tank installed in a pit with vent connections. It is installed with a Z1108 flow control fitting and a Z1090 backwater valve.



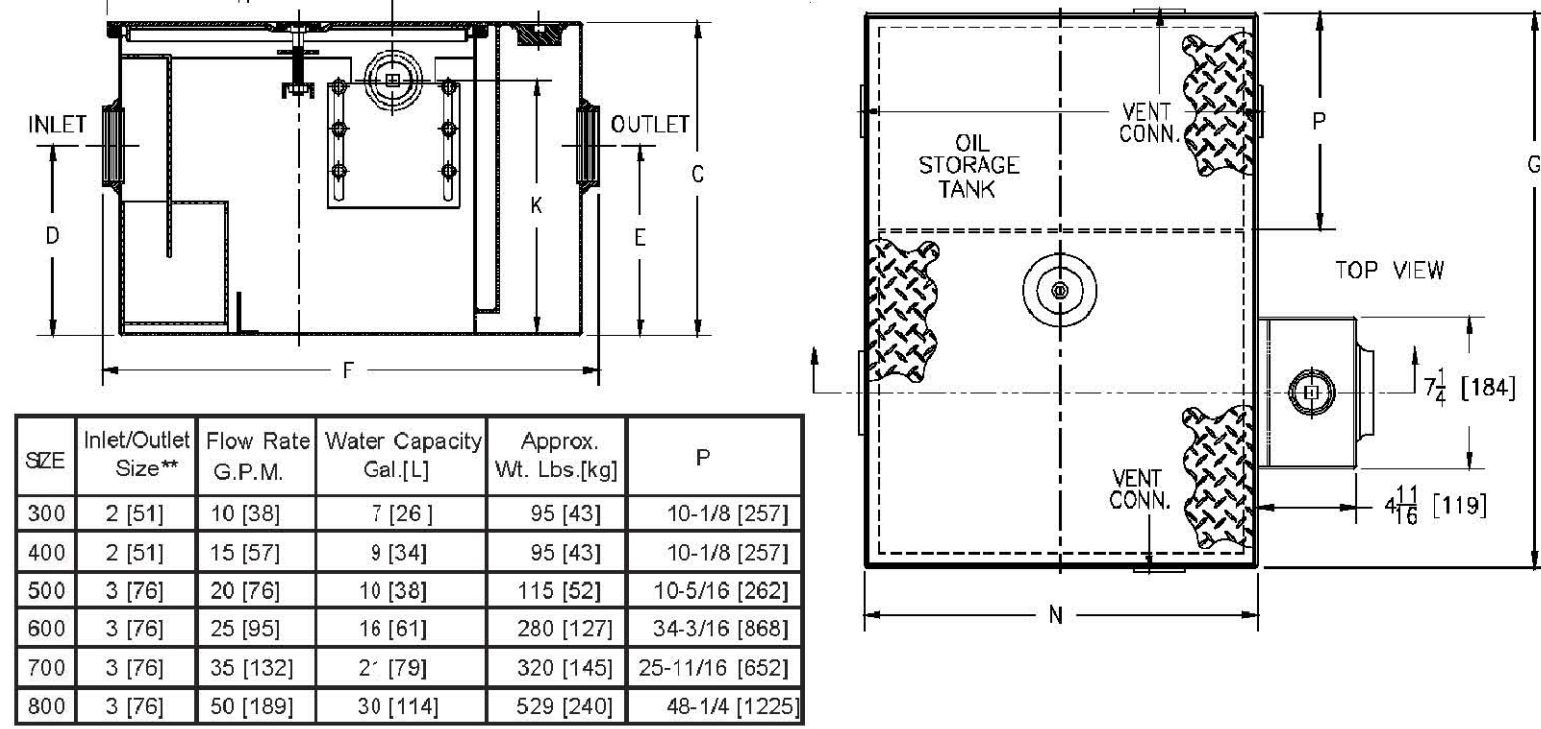
Z1186-ST

OIL INTERCEPTOR W/ INTEGRAL STORAGE TANK

SPECIFICATION SHEET

TAG

Dimensional Data (inches and [mm]) are Subject to Manufacturing Tolerances and Change Without Notice



SIZE	Inlet/Outlet Size**	Flow Rate G.P.M.	Water Capacity Gal [L]	Approx. Vt. Lbs [kg]	P
300	2 [51]	10 [38]	7 [26]	95 [43]	10-1/8 [257]
400	2 [51]	15 [57]	9 [34]	95 [43]	10-1/8 [257]
500	3 [76]	20 [76]	10 [38]	115 [52]	10-5/16 [262]
600	3 [76]	25 [95]	16 [61]	280 [127]	34-3/16 [868]
700	3 [76]	35 [132]	2' [78]	320 [145]	25-11/16 [652]
800	3 [76]	50 [189]	38 [114]	529 [240]	48-1/4 [1225]

Dimensions in inches [mm]								Oil Storage Tank Capacity Gal [L]	No. of Covers
SIZE	C	DE	F	G	H	K	N		
300	13-7/8 [352]	8-1/8 [206]	23-1/16 [586]	23-9/16 [598]	12-1/16 [306]	11 [279]	16-7/8 [429]	6 [22]	1
400	14 [356]	8-1/4 [210]	23-1/16 [586]	23-9/16 [598]	12-1/16 [306]	11 [279]	16-7/8 [429]	6 [22]	1
500	15-1/2 [394]	9-3/8 [238]	25-1/16 [637]	26-1/2 [673]	14-3/16 [360]	12-1/2 [318]	18-7/8 [479]	8 [30]	1
600	18-1/4 [464]	11-3/4 [298]	35-7/32 [895]	50-7/8 [1292]	19-1/4 [489]	15-1/4 [387]	29 [737]	55 [208]	2
700	19-3/4 [502]	12-7/16 [316]	43-7/16 [1103]	45 [1143]	23-1/4 [591]	16-3/4 [425]	37 [940]	55 [208]	2
800	24-1/4 [616]	14-3/16 [360]	49-7/16 [1256]	70-1/8 [1781]	28-1/4 [697]	21-1/4 [540]	43 [1092]	125 [473]	3

ENGINEERING SPECIFICATION: ZURN Z1186-ST

Acid Resistant Coated interior and exterior fabricated steel oil interceptor, with bronze cleanout plug and visible double wall trap seal, removable combination pressure equalizing/flow diffusing baffle and sediment bucket, oil drawoff, vent connections, secured gasketed non-skid cover, complete with flow control fitting and left hand integral storage tank. Regularly furnished with inlet and outlet in high position. Note: location of outlet from bottom of interceptor cannot be changed.

OPTIONS (check/specify appropriate options)

PREFIXES

___ Z Acid Resistant Coated Fabricated Steel*

SUFFIXES

___ E Acid Resistant Coated interior and exterior fabricated steel section. (Specify 'C' Dim. required) for recessed installation
___ +HD Heavy duty traffic cover rated at 10,000 lbs. maximum safe live load.
___ -K Anchor flange 1-3/4 [44] down from top and 2 [51] wide. A 3 [76] minimum extension height is required when anchor flange (-K) option is specified. (Specify 'C' Dim. height required.)
___ -KC Anchor flange 1-3/4 [44] down from top and 2 [51] wide with clamp collar.
___ -STR Storage tank on right hand side when facing the inlet.

** Inlet and outlet sizes shown indicate standard operating sizes and flow control settings. Size #300 and #400 will have 3 [76] connections reduced to 2 [51] as standard. Size #700 and #800 will have 4 [100] connections reduced to 3 [76] as standard.

REV. D	DATE: 10/22/10	C.N. NO. 111959
DWG NO. 66797	PRODUCT NO. Z1186-ST	



Demattei Wong architecture

ARCHITECT
DEMATTEI WONG ARCHITECTURE
3965 NORTH WEST 126TH AVE.
#CORAL SPRINGS, FL 33065
T (954) 341-1800
F (954) 341-1813

Architect: Dale T. Derby
Arch. Reg. No.: AR 93216
CA No.: AA26001040

6-5-19 ZONING COMMENTS

REVISION

TENANT IMPROVEMENTS FOR:

ENTERPRISE
RENT A CAR

14828 & 14830 S. MILITARY TRAIL
DELRAY BEACH, FLORIDA

ZONING REVIEW

ZURN OIL, SAND AND

SEDIMENT INTERCEPTOR

21847

DRAWING PROJECT NUMBER

6-5-2019

DATE

ZONING
REVIEW

ISSUE

A-2

SHEET NO.
SHEET 2 OF 2



CODE NOTES:
CODE IN EFFECT: FBC 2017 6TH EDITION
NEC 2014

SCOPE OF WORK:
NO ACTUAL WORK REQUIRED.
DOCUMENTING EXISTING CONDITIONS.

EXISTING PHOTOMETRIC / ELECTRICAL SITE PLAN

SCALE: 3/32" = 1'-0"

Schedule

Symbol	Label	Quantity	Manufacturer	Catalog Number	DESCRIPTION	Lamp	Number Lamps	Lumens Per Lamp	Light Loss Factor	Wattage
	A	7	Lithonia Lighting	DSX0 LED P3 30K T3M MVOLT	EXISTING FIXTURES TO REMAIN	LED	1	8308.904	1	71

Statistics

Description	Symbol	Avg	Max	Min	Max/Min	
DRIVE WAY & PARKING		3.3 fc	14.1 fc	0.1 fc	141.0:1	
OFF-SITE		0.0 fc	0.0 fc	0.0 fc	N/A	

YAHYA CONSULTANTS, INC.

QUALITY & PRIDE
IN EVERY SERVICE

5516 NW 58TH AVE
CORAL SPRINGS FL 33067
TEL. (954) 263-9318
RYEHIA@MYACC.NET
RAMZI R. YEHIA
FLORIDA LICENSE #64893
CERT. OF AUTH. #27115
PROJECT #19-077

REVISION

TENANT IMPROVEMENTS FOR:
**ENTERPRISE
RENT A CAR**
MILITARY TRAIL
DELRAY BEACH, FLORIDA

PHOTOMETRIC & ELECTRICAL SITE PLAN EXISTING CONDITIONS

SHEET TITLE

XXXXXX

DWA PROJECT NUMBER

7-8-2019

DATE

PERMIT
DOCUMENTS

ISSUE

S-1

SHEET NO.

SHEET 1 OF 1