

REVISIONS:

11/17/23	CITY COMMENTS
05/15/24	CITY COMMENTS
08/20/24	CITY COMMENTS
10/20/24	CITY COMMENTS
02/10/25	CITY COMMENTS

No.	Date	Description
-----	------	-------------

SEAL:
LANDSCAPE ARCHITECT: Christopher Cabezas

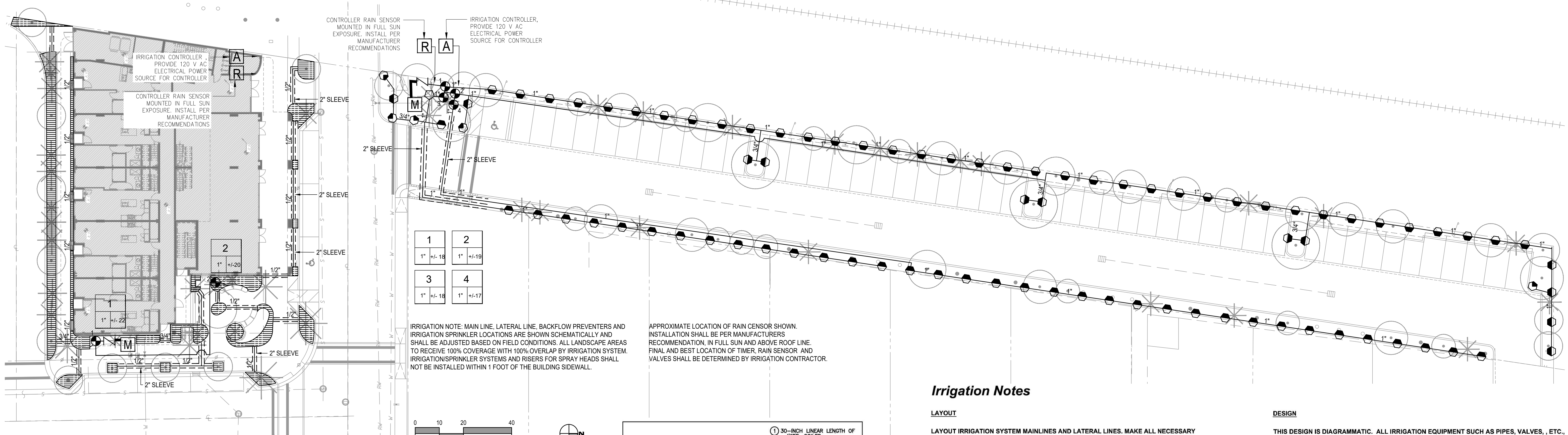
REGISTRATION NO. RLA 666747

SHEET TITLE:

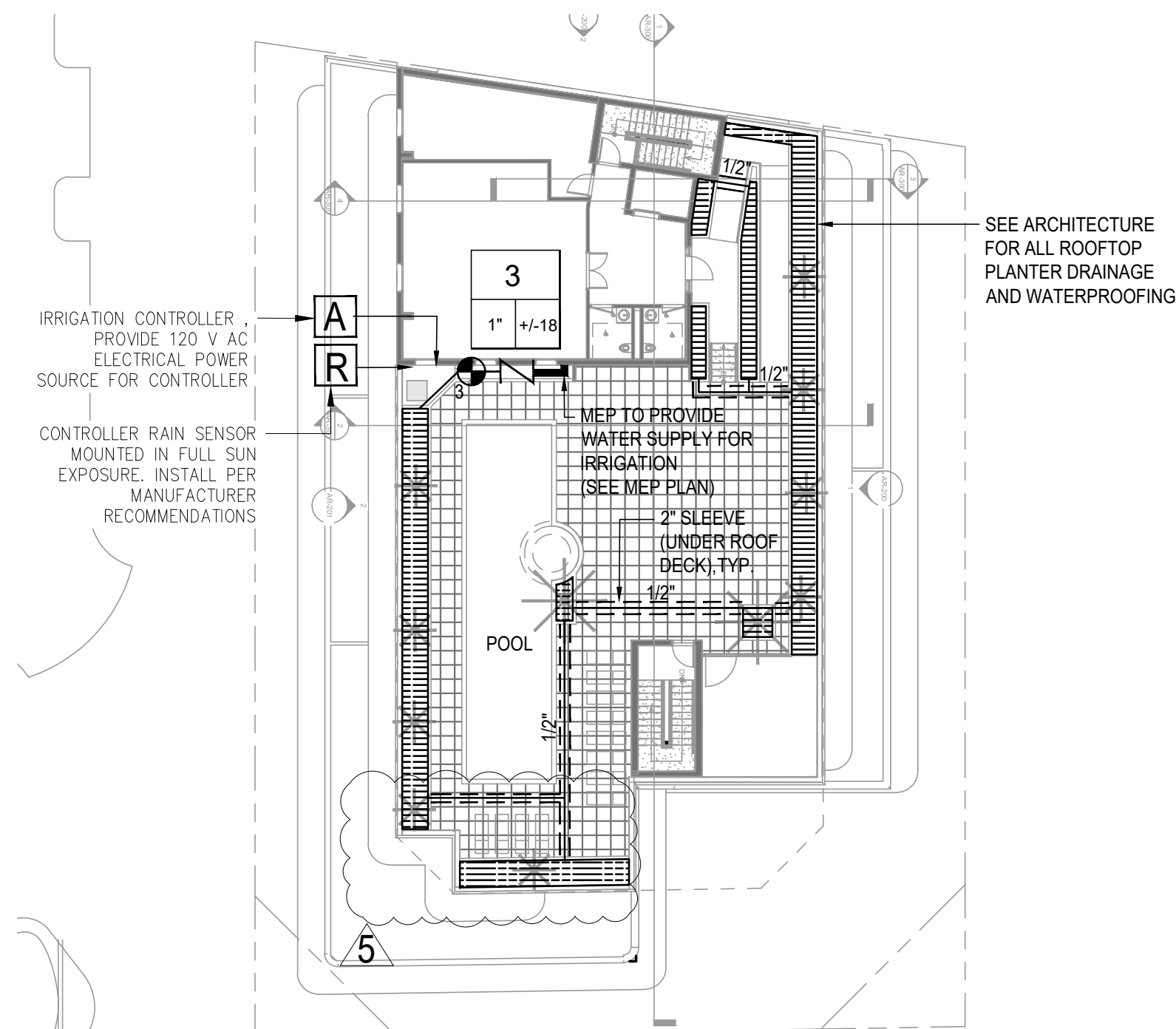
IRRIGATION PLAN

Scale: 1" = 20' - 0"
Drawn By: CC
Checked By: CC
Date: 05/10/2023
SHEET NUMBER:

IR-1



GROUND LEVEL IRRIGATION PLAN

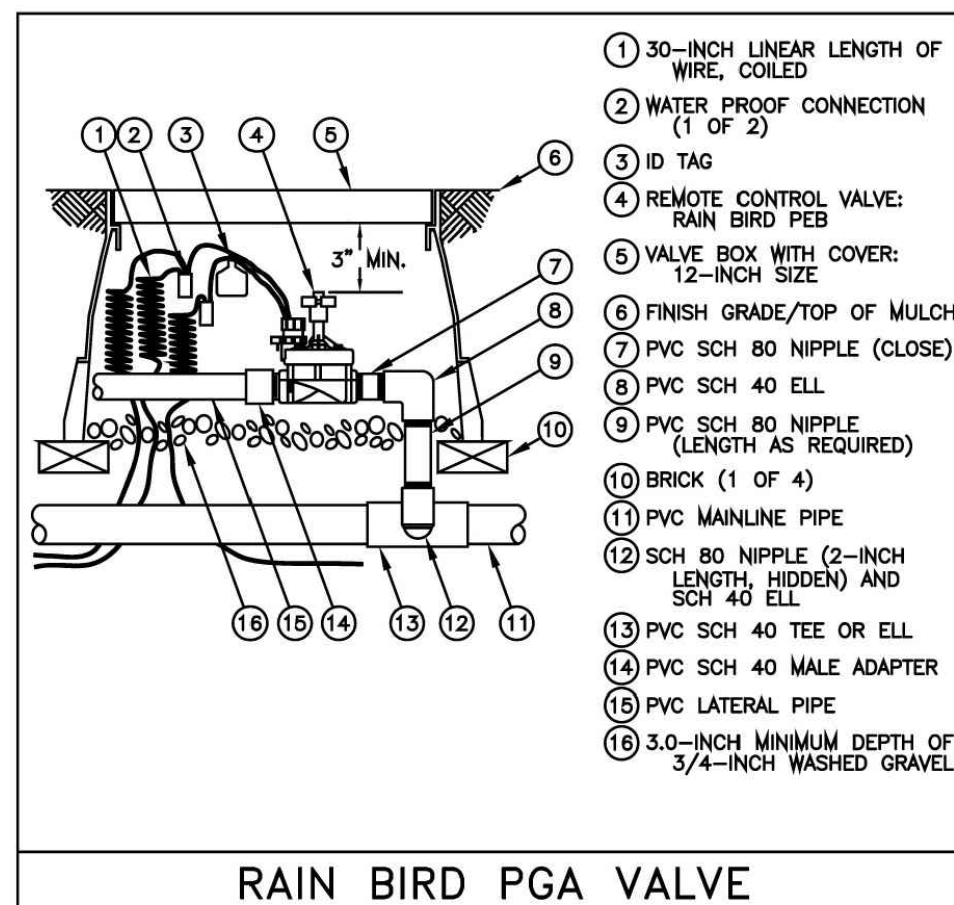
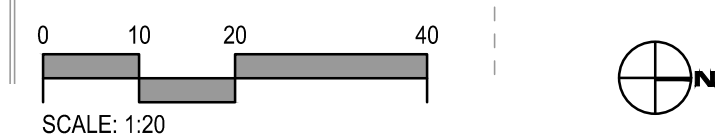


ROOFTOP IRRIGATION PLAN

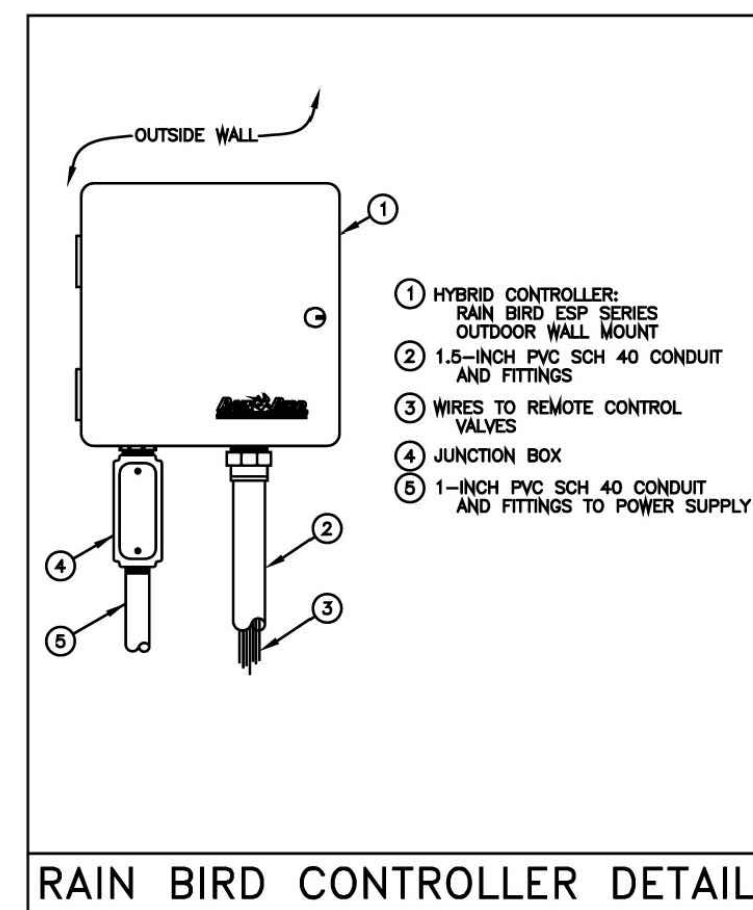
1	1" +/- 18
2	1" +/- 19
3	1" +/- 18
4	1" +/- 17

IRRIGATION NOTE: MAIN LINE, LATERAL LINE, BACKFLOW PREVENTERS AND IRRIGATION SPRINKLER LOCATIONS ARE SHOWN SCHEMATICALLY AND SHALL BE ADJUSTED BASED ON FIELD CONDITIONS. ALL LANDSCAPE AREAS TO RECEIVE 100% COVERAGE WITH 100% OVERLAP BY IRRIGATION SYSTEM. IRRIGATION/SPRINKLER SYSTEMS AND RISERS FOR SPRAY HEADS SHALL NOT BE INSTALLED WITHIN 1 FOOT OF THE BUILDING SIDEWALL.

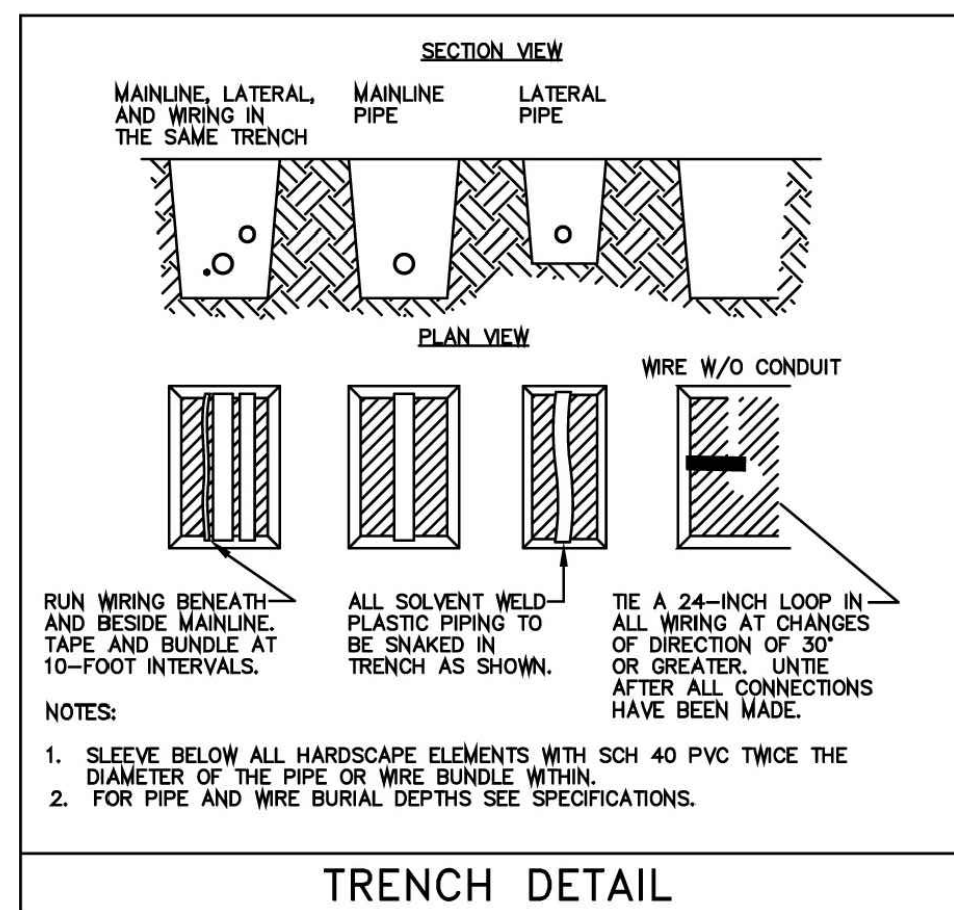
APPROXIMATE LOCATION OF RAIN SENSOR SHOWN. INSTALLATION SHALL BE PER MANUFACTURERS RECOMMENDATION, IN FULL SUN AND ABOVE ROOF LINE. FINAL AND BEST LOCATION OF TIMER, RAIN SENSOR AND VALVES SHALL BE DETERMINED BY IRRIGATION CONTRACTOR.



RAIN BIRD PGA VALVE



RAIN BIRD CONTROLLER DETAIL



TRENCH DETAIL

Irrigation Notes

LAYOUT

LAYOUT IRRIGATION SYSTEM MAINLINES AND LATERAL LINES. MAKE ALL NECESSARY ADJUSTMENTS AS REQUIRED TO TAKE INTO ACCOUNT ALL SITE OBSTRUCTIONS AND LIMITATIONS PRIOR TO EXCAVATING TRENCHES.

FLAG ALL SPRINKLER HEAD LOCATIONS. ADJUST LOCATION AND MAKE THE NECESSARY MODIFICATIONS TO NOZZLE TYPES ETC. AS REQUIRED TO INSURE 100% COVERAGE AND 50% OVERLAP.

LOW ANGLE TRAJECTORY NOZZLES SHALL BE USED WHEN ALL SPRINKLERS AND ROTORS ARE LOCATED WITHIN 100' OF POOLS OR PUBLIC GATHERING AREAS.

PIPE

PIPE LOCATIONS SHOWN ON PLAN ARE SCHEMATIC ONLY AND SHALL BE ADJUSTED IN THE FIELD. WHEN LAYING-OUT MAINS AND LATERALS, LOCATE PIPE NEAR EDGES OF PAVEMENT OR AGAINST BUILDINGS WHEREVER POSSIBLE TO ALLOW SPACE FOR PLANT ROOT BALLS.

PIPING UNDER HARDSCAPES SUCH AS ROADS, WALKS, AND PATIOS ARE TO BE SLEEVED USING SCH. 40 PIPE.

PIPES 4" AND UNDER TO BE SOLVENT WELD. LARGER PIPES TO BE GASKETED 'O' RING PIPES AND USE THRUST BLOCKS OR MEGA LUGS AND DUCTILE IRON FITTINGS AT TURNING LOCATIONS.

*SIZE ALL PIPE SO NOT TO EXCEED 5" PER SECOND
*INSTALL RAIN SENSOR AS PER LOCAL CODE

PIPES CONVEYING RECLAIM WATER SHALL HAVE A 3' HORIZONTAL DISTANCE SEPARATION FROM OTHER PIPING OR UTILITY SERVICES. AN 18" VERTICAL SEPARATION SHALL BE MAINTAINED WHEN APPLICABLE.

AIR RELEASE VALVES TO BE USED AT THE END OF ALL MAINLINE RUNS.

WIRES

LOW VOLTAGE WIRE TO BE INSTALLED ALONG MAINLINE INSTALLATION. USE 2" SCH. 40 PVC WITH SWEEP ELBOWS AT TURNING LOCATIONS WHEN SLEEVEING IS REQUIRED. ALL SPLICES SHALL BE ENCLOSED WITHIN A VALVE/SPLICE BOX.

WIRE SIZED AND COLORED AS FOLLOWS:

- #12 WHITE FOR COMMON
 - #12 SPARE BLACK COMMON (1 SPARE NEEDED PER 10 HOT WIRES)
 - #14 RED HOT WIRES
 - #14 SPARE YELLOW HOT WIRE (1 SPARES NEEDED PER 10 HOT WIRES, 3 SPARE MINIMUM)
- WHEN WIRE RUNS EXCEEDS 3,500 LINEAR FEET, USE #10 FOR COMMON WIRES AND #12 FOR HOT/SPARE WIRES.

ALL IRRIGATION CONTROLLERS TO BE PROPERLY GROUNDED IN ACCORDANCE WITH MANUFACTURE'S RECOMMENDATIONS.

FLUSHING

PRIOR TO PLACEMENT OF HEADS FLUSH ALL LINES UNTIL LINES ARE COMPLETELY CLEAN OF DEBRIS.

TRENCHING

TRENCH BOTTOM TO BE UNIFORM AND FREE OF DEBRIS. NATIVE EXCAVATED MATERIAL USED TO BACKFILL TRENCH SHALL BE FREE FROM ROCKS OR STONES LARGER THAN 1" IN DIAMETER.

MISC.

PRESSURE TEST MAINLINE AS PER FLORIDA BUILDING CODE. INSTALL IRRIGATION SYSTEM AS PER LATEST EDITION OF THE FLORIDA BUILDING CODE, APPENDIX F, AND ALL PERTINENT LOCAL CODES.

SPRAY HEADS INSTALLED IN SHRUB AREAS TO BE 12 INCH POP-UPS OR INSTALLED ON RISERS.

DESIGN

THIS DESIGN IS DIAGRAMMATIC. ALL IRRIGATION EQUIPMENT SUCH AS PIPES, VALVES, , ETC., SHOWN WITHIN PERVIOUS AREAS ARE FOR DESIGN CLARIFICATION ONLY. THE IRRIGATION CONTRACTOR SHALL INSTALL IRRIGATION EQUIPMENT IN PLANTING AREAS WHEREVER POSSIBLE.

THE IRRIGATION CONTRACTOR IS RESPONSIBLE TO FAMILIARIZE741 THEMSELVES WITH THE SCOPE OF WORK, INCLUDING BUT NOT LIMITED TO GRADE DIFFERENCES, LOCATION OF WALL STRUCTURES, UTILITIES AND EXISTING IRRIGATION EQUIPMENT. THE IRRIGATION CONTRACTOR IS RESPONSIBLE SHALL REPAIR AND/OR REPLACE ANY DAMAGE CREATED BY THEIR WORK. THEY SHALL COORDINATE HIS WORK WITH OTHER CONTRACTOR OR MUNICIPAL AUTHORITIES FOR THE LOCATION AND INSTALLATION OF IRRIGATION EQUIPMENT UNDER ROADWAYS AND PAVING, SLEEVES THROUGH WALLS AND FLOORS, ETC.

INSTALL ALL IRRIGATION EQUIPMENT PER MANUFACTURER'S RECOMMENDATIONS AND SPECIFICATIONS. SUBSTITUTIONS FOR IRRIGATION EQUIPMENT TO BE APPROVED BY THE IRRIGATION DESIGNER. EQUIPMENT CHANGES TO INCLUDE BUT NOT LIMITED TO PUMP, CONTROLLER, SPRAY HEADS, ROTORS, AND VALVES.

DO NOT INSTALL IRRIGATION EQUIPMENT AS SHOWN ON THE DRAWINGS WHEN FIELD CONDITIONS DIFFER. OBSTRUCTIONS OR DIFFERENCES TO BE BROUGHT TO THE ATTENTION OF THE ARCHITECT. IN THE EVENT THIS NOTIFICATION IS NOT PERFORMED, THE IRRIGATION CONTRACTOR TO ASSUME FULL RESPONSIBILITY.

EQUIPMENT TABLE

Backflow Preventers	
Symbol	Description
	Pressure Vacuum Breaker

Controllers	
Symbol	Description
	Rainbird ESP-Me
	Rain Sensor

Irrigation Heads	
Symbol	Description
	RAINBIRD 1800 SERIES 15 Strip Series trajectory 30 deg EST*
	RAINBIRD 1800 SERIES 15 Strip Series trajectory 30 deg SST*
	RAINBIRD 1800 SERIES HE-VAN 08 Series 90°
	RAINBIRD 1800 SERIES HE-VAN 10 Series 90°
	RAINBIRD 1800 SERIES HE-VAN 10 Series 180°
	RAINBIRD 1800 SERIES HE-VAN 12 Series 90°
	RAINBIRD 1800 SERIES HE-VAN 12 Series 180°
	RAINBIRD 1800 SERIES HE-VAN 12 Series 360°
	RAINBIRD 1800 SERIES HE-VAN 15 Series 90°
	RAINBIRD 5000 SERIES ROTARY FULL CIRCLE
	RAINBIRD 5000 SERIES ROTARY PART CIRCLE

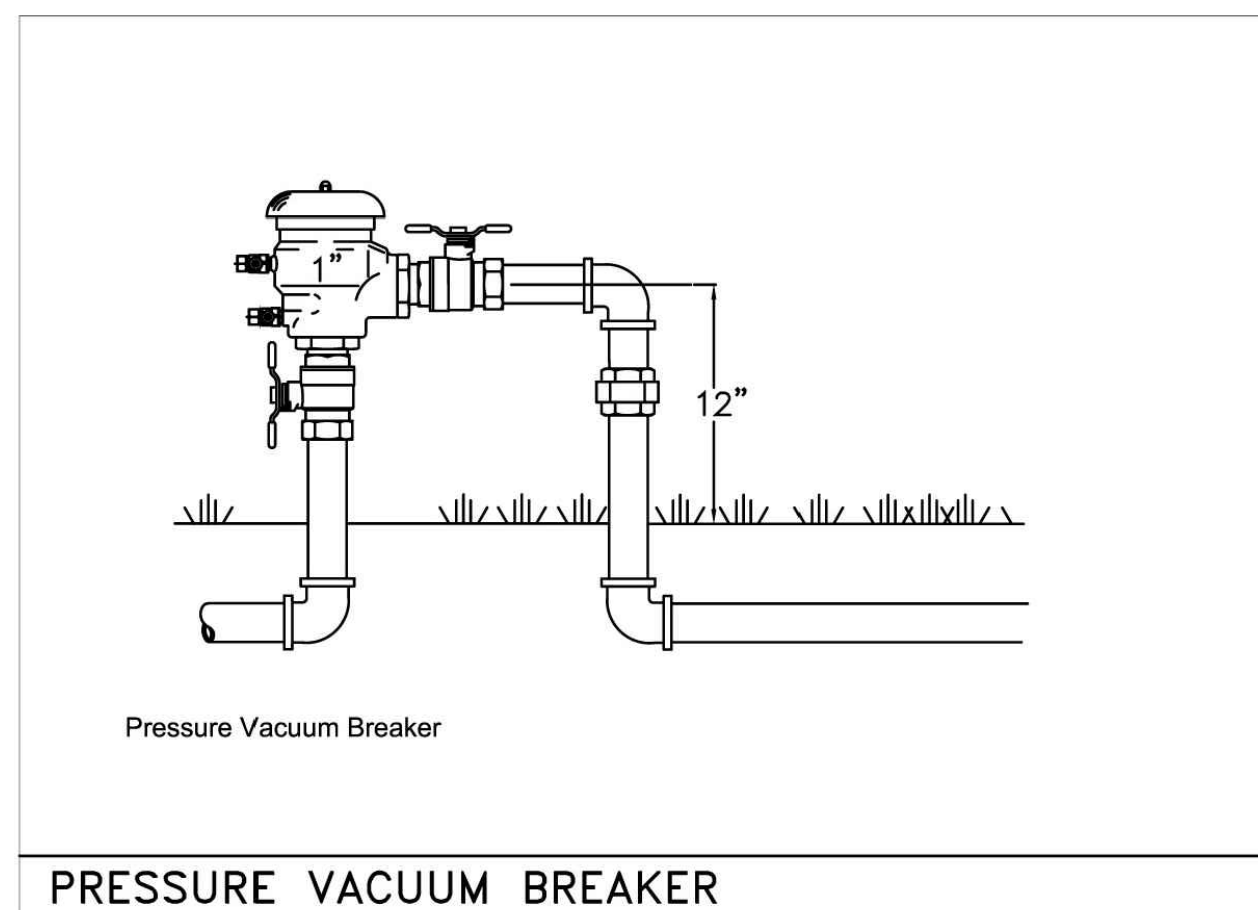
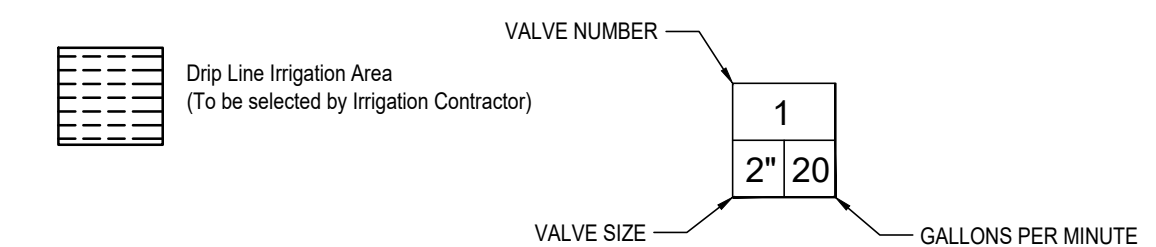
Pipe (Lateral)	
Symbol	Description
	Class 160 PVC (Lateral)

Pipe (Mainline)	
Symbol	Description
	Schedule 40 PVC Pipe

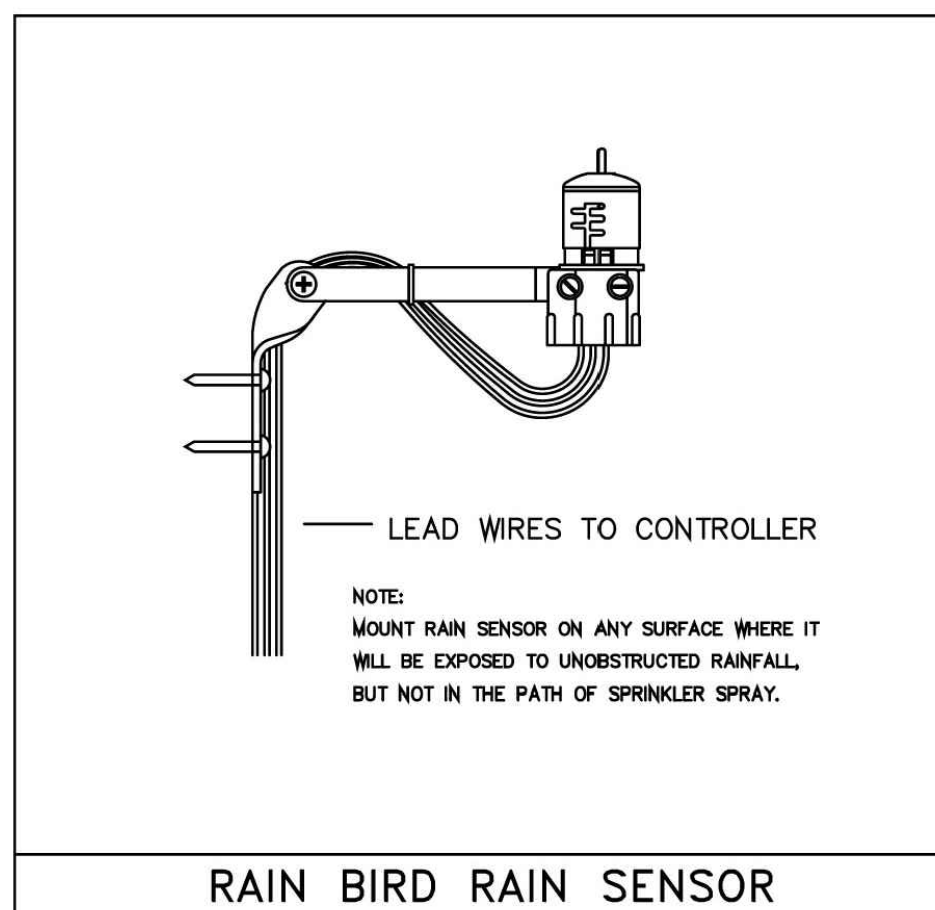
Pipe (Sleeve)	
Symbol	Description
	Schedule 40 PVC Pipe

Valves	
Symbol	Description
	Rainbird PGA Valve

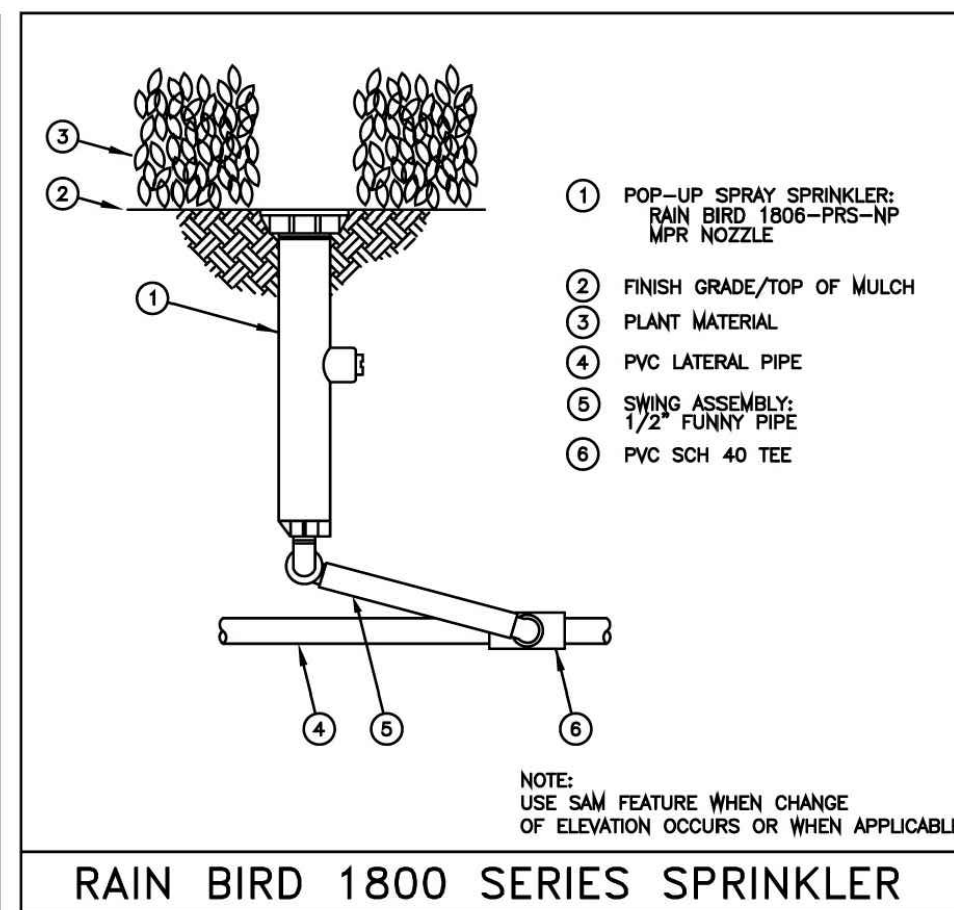
Water Meters	
Symbol	Description
	1" Water Meter



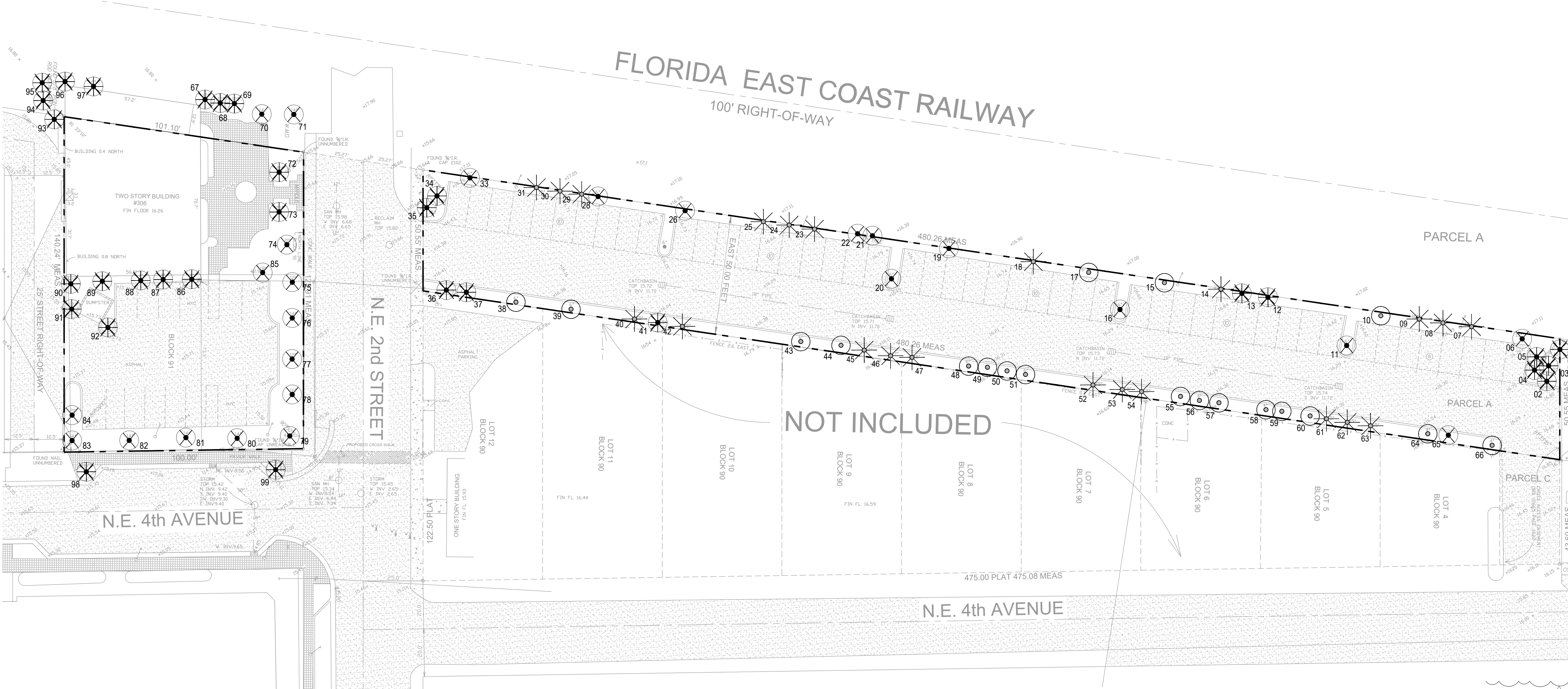
PRESSURE VACUUM BREAKER



RAIN BIRD RAIN SENSOR



RAIN BIRD 1800 SERIES SPRINKLER



TREE DISPOSITION

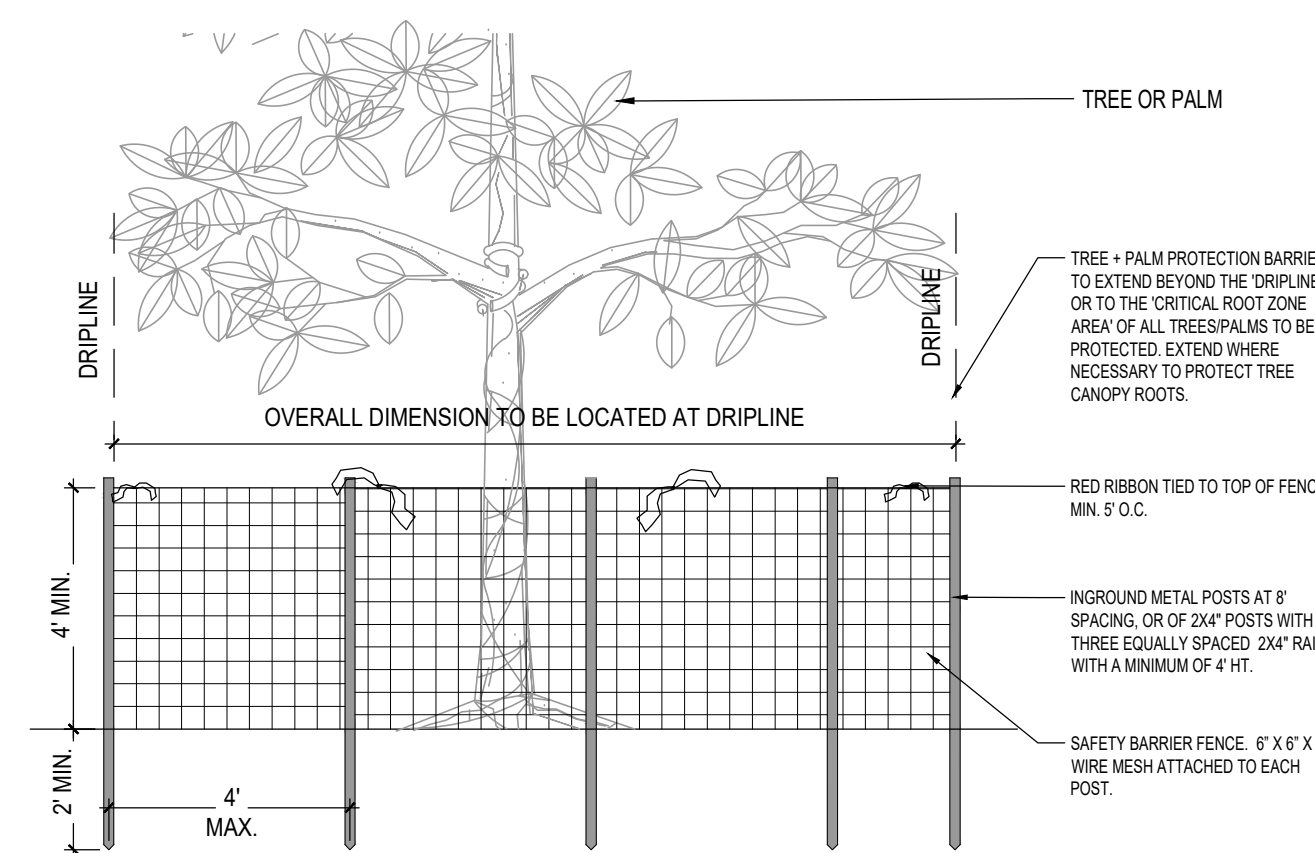
Tree Number	Botanical Name	Common Name	DBH (Inches)	Height (FT)	Canopy (FT)	Condition $\geq 60\%$	Disposition	Mitigation Required
10	Cordia alliodora	Orange Geiger	6	21'	10'	Fair 58%	Remain	-
20	Quercus virginiana	Live Oak	9	23'	22'	Fair 56%	Remove	9" DBH
26	Quercus virginiana	Live Oak	10	22'	20'	Fair 60%	Remove	10" DBH
33	Swietenia mahagoni	Mahogany	9	22'	12'	Fair 55%	Remove	9" DBH
38	Quercus virginiana	Live Oak	10	22'	24'	Fair 58%	Remain	-
39	Quercus virginiana	Live Oak	13	19'	16'	Fair 60%	Remain	-
49	Quercus virginiana	Live Oak	7	23'	25'	Fair 50%	Remain	-
71	Swietenia mahagoni	Mahogany	20	25'	24'	Fair 50%	Remove	20" DBH
74	Swietenia mahagoni	Mahogany	22	29'	26'	Fair 53%	Remove	22" DBH
76	Swietenia mahagoni	Mahogany	15	28'	25'	Fair 54%	Remove	15" DBH
78	Swietenia mahagoni	Mahogany	20	28'	25'	Fair 54%	Remove	20" DBH
84	Swietenia mahagoni	Mahogany	30	32'	32'	Good 65%	Remove	30" DBH
85	Swietenia mahagoni	Mahogany	19	28'	34'	Good 62%	Remove	19" DBH
Total Mitigation DBH - 154"								

Palm Number	Botanical Name	Common Name	DBH (Inches)	Height (FT)	Canopy (FT)	Condition $\geq 60\%$	Disposition	Mitigation Required
1	Sabal palmetto	Sabal Palm	12	22'	16'	Fair 55%	Remove	22
2	Sabal palmetto	Sabal Palm	12	24'	16'	Fair 55%	Remove	24
3	Sabal palmetto	Sabal Palm	12	24'	16'	Fair 55%	Remove	24
4	Sabal palmetto	Sabal Palm	12	25'	16'	Fair 55%	Remove	25
5	Sabal palmetto	Sabal Palm	12	24'	16'	Fair 55%	Remove	24
36	Sabal palmetto	Sabal Palm	11	13'	16'	Fair 53%	Remove	13
37	Sabal palmetto	Sabal Palm	12	20'	16'	Fair 55%	Remove	20
72	Bismarckia nobilis	Bismarck Palm	19	28'	20'	Good 63%	Remove	28
73	Bismarckia nobilis	Bismarck Palm	18	30'	20'	Fair 60%	Remove	30
91	Sabal palmetto	Sabal Palm	12	14'	18'	Fair 58%	Remove	14
92	Sabal palmetto	Sabal Palm	12	17'	16'	Fair 60%	Remove	17
93	Sabal palmetto	Sabal Palm	13	21'	16'	Fair 60%	Remove	21
94	Sabal palmetto	Sabal Palm	14	21'	16'	Fair 55%	Remove	21
95	Sabal palmetto	Sabal Palm	14	20'	16'	Fair 58%	Remove	20
96	Sabal palmetto	Sabal Palm	14	15'	16'	Fair 60%	Remove	16
98	Veitchia arocin	Montgomery Palm	6	12'	12'	Fair 60%	Remove	12
99	Veitchia arocin	Montgomery Palm	6	12'	12'	Fair 60%	Remove	12
Total Palm Mitigation: 343" HT (22 Palms)								

Tree Number	Botanical Name	Common Name	DBH (Inches)	Height (FT)	Canopy (FT)	Condition < 60%	Disposition	Mitigation Required
6	Schinus terebinthifolia	Brazilian Pepper	24	23'	35'	NA	Remove	-
11	Quercus virginiana	Live Oak	8	21'	16'	Poor 38%	Remove	1 Tree @ 16'
15	Swietenia mahagoni	Mahogany Tree	8	20'	15'	Fair 47%	Remain	-
16	Quercus virginiana	Live Oak	6	16'	15'	Poor 32%	Remove	1 Tree @ 16'
17	Bursera simaruba	Gumbo Limbo	9	17'	14'	Fair 40%	Remain	-
19	Bursera simaruba	Gumbo Limbo	8	17'	15'	Fair 40%	Remove	1 Tree @ 16'
21	Swietenia mahagoni	Mahogany Tree	9	25'	11'	Fair 45%	Remove	1 Tree @ 16'
22	Cordia alliodora	Orange Geiger	6	15'	14'	Fair 43%	Remove	1 Tree @ 16'
28	Swietenia mahagoni	Mahogany	6	20'	10'	Fair 43%	Remove	1 Tree @ 16'
43	Quercus virginiana	Live Oak	9	22'	18'	Fair 44%	Remain	-
44	Coccoloba uvifera	Seagrape	12	20'	15'	Poor 37%	Remain	-
48	Coccoloba uvifera	Seagrape	9	20'	18'	Poor 35%	Remain	-
50	Swietenia mahagoni	Mahogany	3	17'	8'	Poor 34%	Remain	-
51	Quercus virginiana	Live Oak	8	23'	20'	Poor 37%	Remain	-
55	Coccoloba uvifera	Seagrape	7	16'	12'	Poor 35%	Remain	-
56	Coccoloba uvifera	Seagrape	7	16'	12'	Poor 35%	Remain	-
57	Quercus virginiana	Live Oak	6	12'	10'	Poor 33%	Remain	-
58	Coccoloba uvifera	Seagrape	6	13'	10'	Poor 36%	Remain	-
59	Quercus virginiana	Live Oak	12	13'	15'	Poor 32%	Remain	-
60	Coccoloba uvifera	Seagrape	12	13'	15'	Poor 35%	Remain	-
64	Quercus virginiana	Live Oak	5	12'	13'	Poor 28%	Remain	-
65	Schinus terebinthifolia	Brazilian Pepper	4	10'	8'	NA	Remove	-
66	Quercus virginiana	Live Oak	8	24'	15'	Poor 40%	Remain	-
70	Swietenia mahagoni	Mahogany	19	25'	25'	Fair 48%	Remove	1 Tree @ 16'
75	Swietenia mahagoni	Mahogany	14	29'	24'	Fair 48%	Remove	1 Tree @ 16'
77	Swietenia mahagoni	Mahogany	14	28'	27'	Fair 47%	Remove	1 Tree @ 16'
79	Swietenia mahagoni	Mahogany	16	29'	26'	Fair 49%	Remove	1 Tree @ 16'
80	Swietenia mahagoni	Mahogany	18	30'	26'	Fair 48%	Remove	1 Tree @ 16'
81	Swietenia mahagoni	Mahogany	20	31'	24'	Fair 47%	Remove	1 Tree @ 16'
82	Swietenia mahagoni	Mahogany	32	22'	28'	Fair 47%	Remove	1 Tree @ 16'
83	Swietenia mahagoni	Mahogany	20	27'	28'	Fair 48%	Remove	1 Tree @ 16'
Total Tree Mitigation: 14 Trees @ 16' HT								

Palm Number	Botanical Name	Common Name	DBH (Inches)	Height (FT)	Canopy (FT)	Condition < 60%	Disposition	Mitigation Required
7	Sabal palmetto	Sabal Palm	24	24'	16'	Fair 43%	Remain	-
8	Sabal palmetto	Sabal Palm	13	23'	16'	Fair 45%	Remain	-
9	Sabal palmetto	Sabal Palm	10	14'	16'	Fair 45%	Remain	-
12	Sabal palmetto	Sabal Palm	12	19'	16'	Poor 36%	Remove	1 Palm @ 16'
13	Sabal palmetto	Sabal Palm	12	18'	16'	Poor 34%	Remove	1 Palm @ 16'
14	Sabal palmetto	Sabal Palm	10	18'	16'	Poor 34%	Remain	-
18	Sabal palmetto	Sabal Palm	11	19'	16'	Poor 34%	Remain	-
23	Sabal palmetto	Sabal Palm	10	17'	16'	Poor 33%	Remain	-
24	Sabal palmetto	Sabal Palm	12	18'	16'	Poor 34%	Remain	-
25	Sabal palmetto	Sabal Palm	12	16'	16'	Poor 30%	Remain	-
29	Sabal palmetto	Sabal Palm	10	20'	16'	Poor 37%	Remain	-
30	Sabal palmetto	Sabal Palm	12	20'	16'	Poor 40%	Remain	-
31	Sabal palmetto	Sabal Palm	12	20'	16'	Poor 40%	Remain	-
34	Sabal palmetto	Sabal Palm	11	27'	16'	Poor 38%	Remove	1 Palm @ 16'
35	Sabal palmetto	Sabal Palm	11	22'	16'	Poor 40%	Remove	1 Palm @ 16'
40	Sabal palmetto	Sabal Palm	13	19'	16'	Fair 43%	Remain	-
41	Sabal palmetto	Sabal Palm	13	23'	16'	Poor 27%	Remove	1 Palm @ 16'
42	Sabal palmetto	Sabal Palm	14	21'	16'	Poor 35%	Remain	-
45	Sabal palmetto	Sabal Palm	12	23'	16'	Poor 39%	Remain	-
46	Sabal palmetto	Sabal Palm	14	21'	16'	Poor 36%	Remain	-
47	Sabal palmetto	Sabal Palm	12	20'	16'	Poor 34%	Remain	-
52	Sabal palmetto	Sabal Palm	14	22'	16'	Poor 30%	Remain	-
53	Sabal palmetto	Sabal Palm	13	20'	16'	Poor 23%	Remain	-
54	Sabal palmetto	Sabal Palm	13	20'	16'	Poor 24%	Remain	-
61	Sabal palmetto	Sabal Palm	12	18'	16'	Poor 25%	Remain	-
62	Sabal palmetto	Sabal Palm	14	20'	16'	Poor 30%	Remain	-
63	Sabal palmetto	Sabal Palm	14	19'	16'	Poor 30%	Remain	-
67	Sabal palmetto	Sabal Palm	13	20'	16'	Poor 35%	Remove	1 Palm @ 16'
68	Sabal palmetto	Sabal Palm	13	21'	16'	Poor 40%	Remove	1 Palm @ 16'
69	Sabal palmetto	Sabal Palm	12	21'	16'	Poor 33%	Remove	1 Palm @ 16'
86	Phycosperma elegans	Solitaire Palm	5	28'	8'	Poor 34%	Remove	1 Palm @ 16'
87	Phycosperma elegans	Solitaire Palm	9	28'	20'	Poor 35%	Remove	1 Palm @ 16'
88	Phycosperma elegans	Solitaire Palm	9	28'	20'	Poor 37%	Remove	1 Palm @ 16'
89	Phycosperma elegans	Solitaire Palm	9	28'	20'	Poor 37%	Remove	1 Palm @ 16'
90	Phycosperma elegans	Solitaire Palm	4	28'	10'	Poor 34%	Remove	1 Palm @ 16'
97	Sabal palmetto	Sabal Palm	14	10'	16'	Poor 28%	Remove	1 Palm @ 16'
Total Palm Mitigation: 14 Palms @ 16' HT								

Total DBH of Trees with Condition Rating $\geq 60\%$ to be Removed	154 inches Required
Total Palms with Condition Rating $\geq 60\%$ to be Removed	22 Palms @ 16' HT Required
Total Trees with Condition Rating < 60% to be Removed	14 Trees @ 16' HT Required
Total Palms with Condition Rating < 60% to be Removed	14 Palms @ 16' HT Required



NOTE: BARRIER TO BE CONTINUOUS AROUND THE TREE OR GROUP OF TREES. SEE LANDSCAPE PLAN FOR LOCATION OF TREES TO REMAIN.

TREE PROTECTION DETAIL
SCALE: N/A

PLANT SYMBOLS

TREES: EXISTING TO REMAIN

TREES: EXISTING TO BE REMOVED

PALMS: EXISTING TO REMAIN

PALMS: EXISTING TO BE REMOVED

811
Know what's below.
Call before you dig.

SCALE: 1" = 20'-0"
SCALE: 1:20

REVISIONS:

▲ 11/17/23	CITY COMMENTS
▲ 5/15/24	CITY COMMENTS
▲ 8/29/24	CITY COMMENTS
▲ 10/20/24	CITY COMMENTS
▲ 02/10/25	CITY COMMENTS
▲ 04/08/25	CITY COMMENTS

SCALE:
LANDSCAPE ARCHITECT: Christopher Cabezas

REGISTRATION NO. RLA 6667347

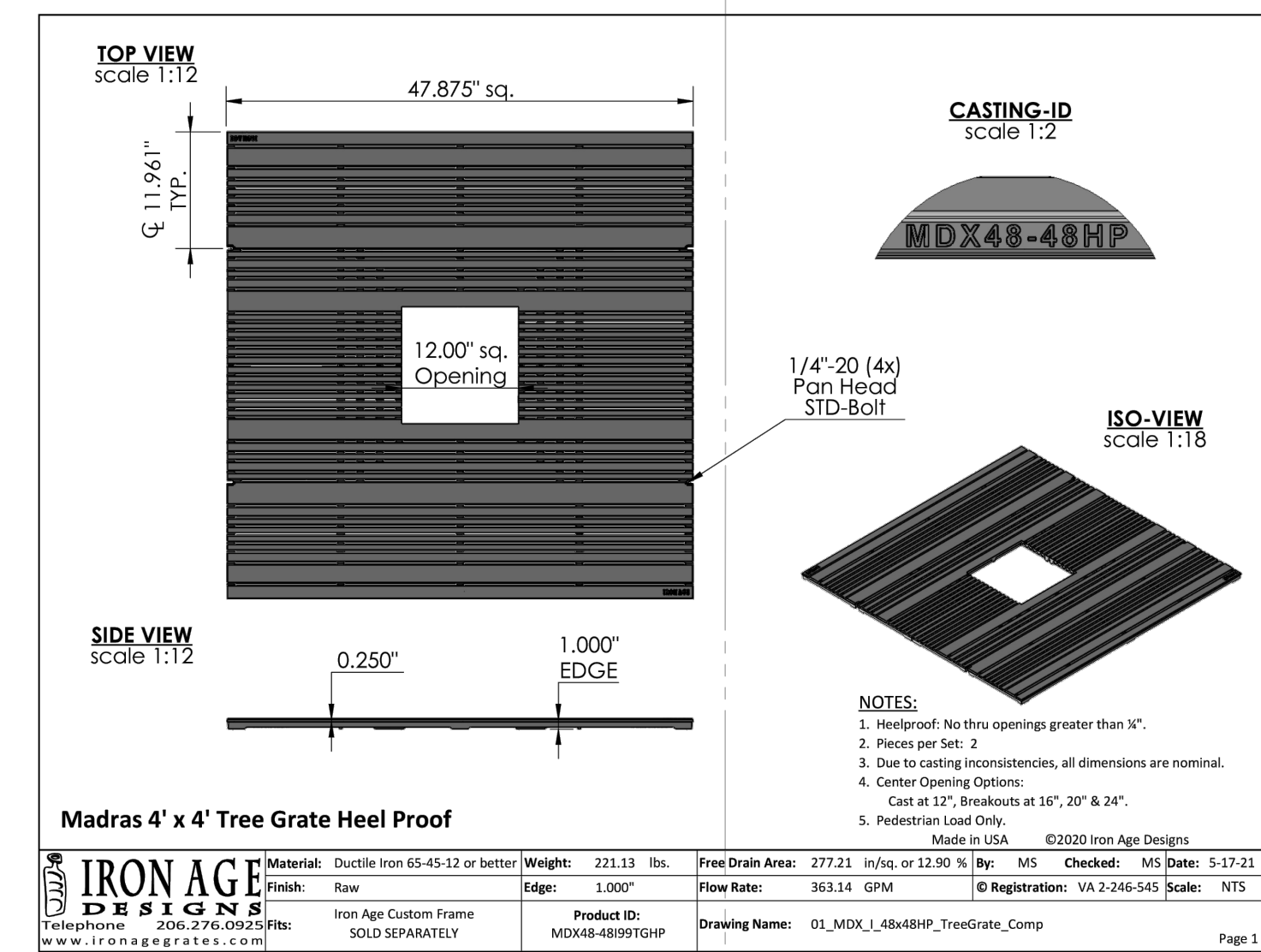
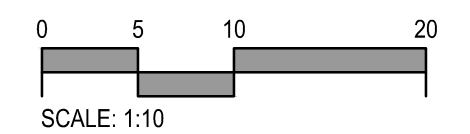
SHEET TITLE:
LANDSCAPE PLAN
ENLARGEMENT

Scale: 1" = 10'-0"
Drawn By: CC
Checked By: CC
Date: 05/10/2023
SHEET NUMBER:

L-2.1



Know what's below.
Call before you dig.



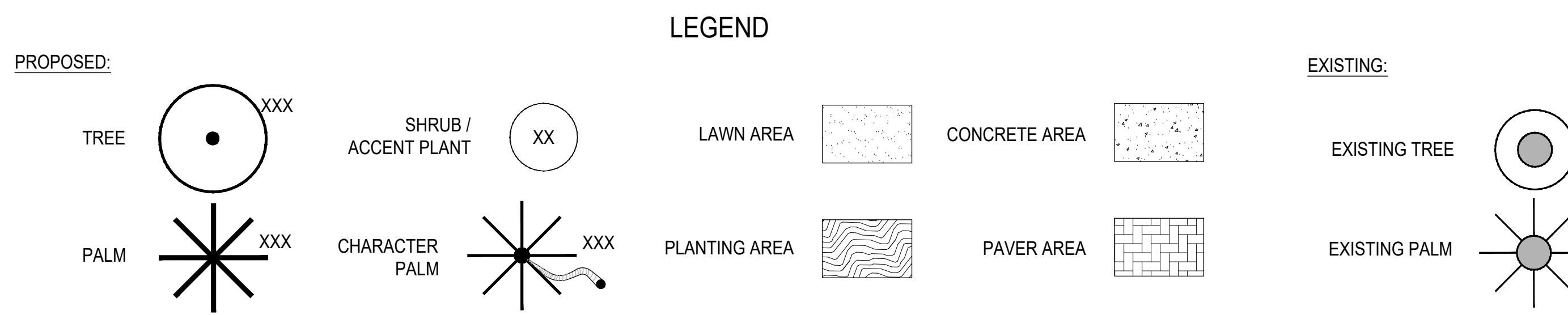
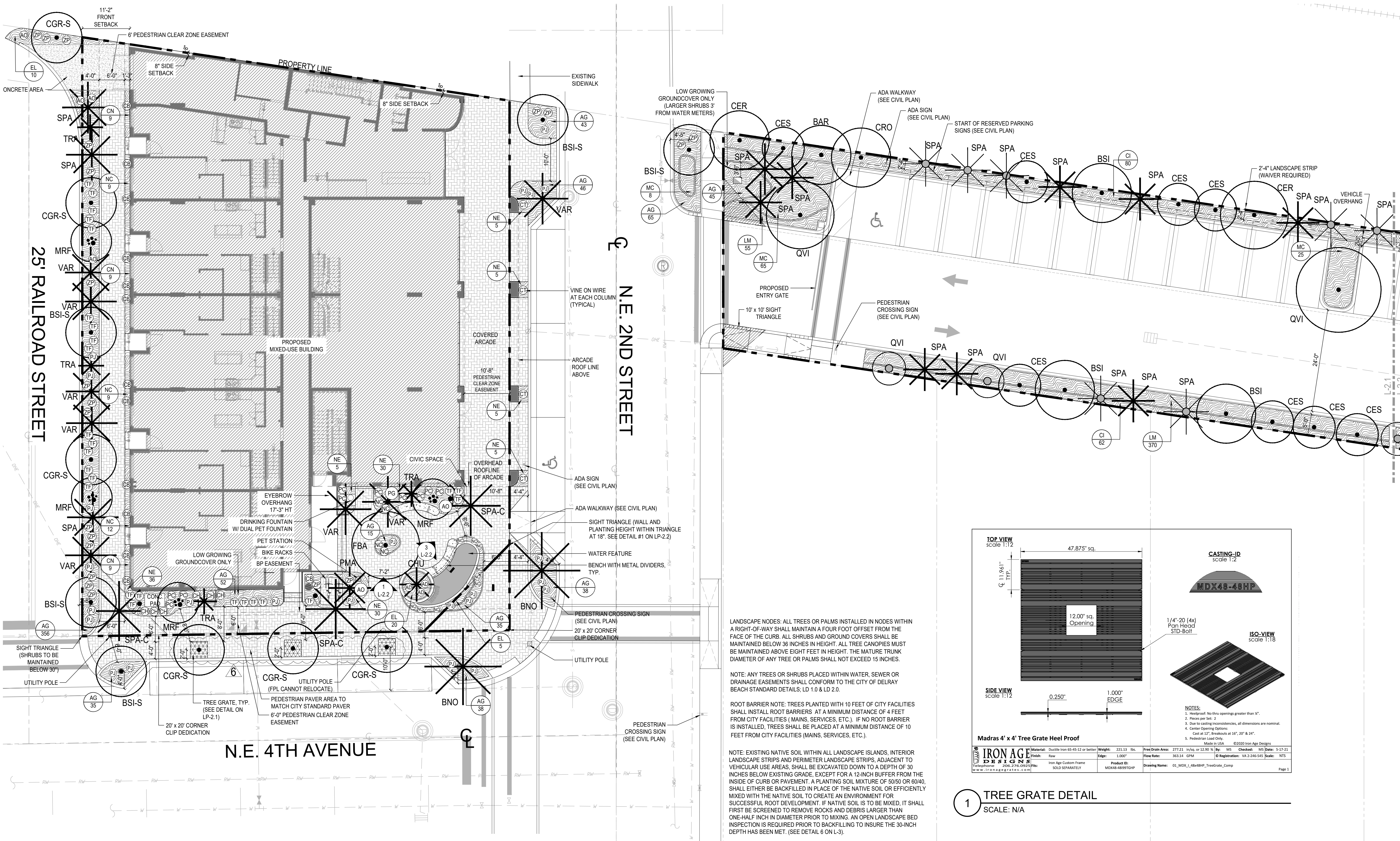
1 TREE GRATE DETAIL
SCALE: N/A

LANDSCAPE NODES: ALL TREES OR PALMS INSTALLED IN NODES WITHIN A RIGHT-OF-WAY SHALL MAINTAIN A FOUR FOOT OFFSET FROM THE FACE OF THE CURB. ALL SHRUBS AND GROUND COVERS SHALL BE MAINTAINED BELOW 36 INCHES IN HEIGHT. ALL TREE CANOPIES MUST BE MAINTAINED ABOVE EIGHT FEET IN HEIGHT. THE MATURE TRUNK DIAMETER OF ANY TREE OR PALMS SHALL NOT EXCEED 15 INCHES.

NOTE: ANY TREES OR SHRUBS PLACED WITHIN WATER, SEWER OR DRAINAGE EASEMENTS SHALL CONFORM TO THE CITY OF DELRAY BEACH STANDARD DETAILS: LD 1.0 & LD 2.0.

ROOT BARRIER NOTE: TREES PLANTED WITH 10 FEET OF CITY FACILITIES SHALL INSTALL ROOT BARRIERS AT A MINIMUM DISTANCE OF 4 FEET FROM CITY FACILITIES (MANS, SERVICES, ETC.). IF NO ROOT BARRIER IS INSTALLED, TREES SHALL BE PLACED AT A MINIMUM DISTANCE OF 10 FEET FROM CITY FACILITIES (MANS, SERVICES, ETC.).

NOTE: EXISTING NATIVE SOIL WITHIN ALL LANDSCAPE ISLANDS, INTERIOR LANDSCAPE STRIPS AND PERIMETER LANDSCAPE STRIPS, ADJACENT TO VEHICULAR USE AREAS, SHALL BE EXCAVATED DOWN TO A DEPTH OF 30 INCHES BELOW EXISTING GRADE, EXCEPT FOR A 12-INCH BUFFER FROM THE INSIDE OF CURB OR PAVEMENT. A PLANTING SOIL MIXTURE OF 50/50 OR 80/40, SHALL EITHER BE BACKFILLED IN PLACE OF THE NATIVE SOIL OR EFFICIENTLY MIXED WITH THE NATIVE SOIL TO CREATE AN ENVIRONMENT FOR SUCCESSFUL ROOT DEVELOPMENT. IF NATIVE SOIL IS TO BE MIXED, IT SHALL FIRST BE SCREENED TO REMOVE ROCKS AND DEBRIS LARGER THAN ONE-HALF INCH IN DIAMETER PRIOR TO MIXING. AN OPEN LANDSCAPE BED INSPECTION IS REQUIRED PRIOR TO BACKFILLING TO INSURE THE 30-INCH DEPTH HAS BEEN MET. (SEE DETAIL 6 ON L-3).



REVISIONS:

▲	11/17/23	CITY COMMENTS
▲	5/15/24	CITY COMMENTS
▲	8/29/24	CITY COMMENTS
▲	10/29/24	CITY COMMENTS

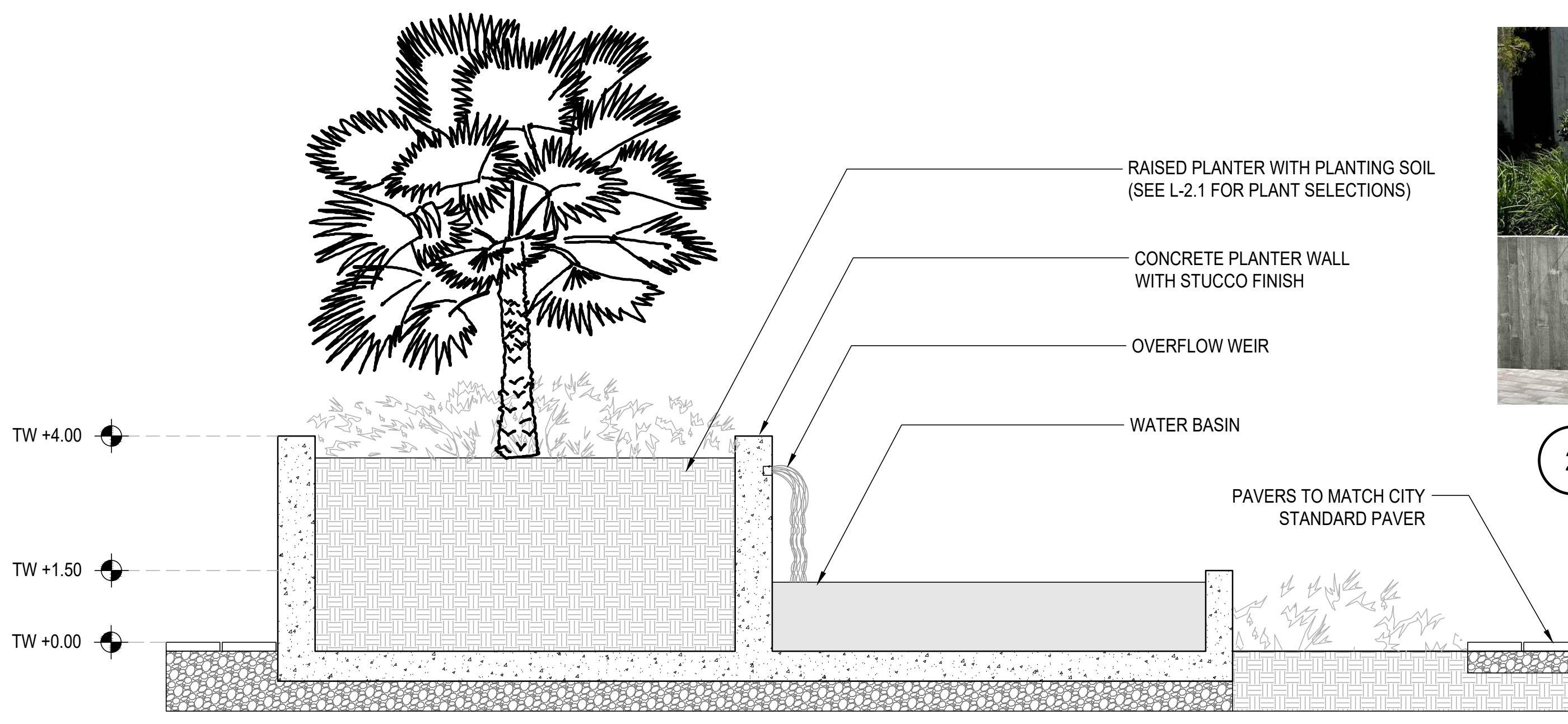
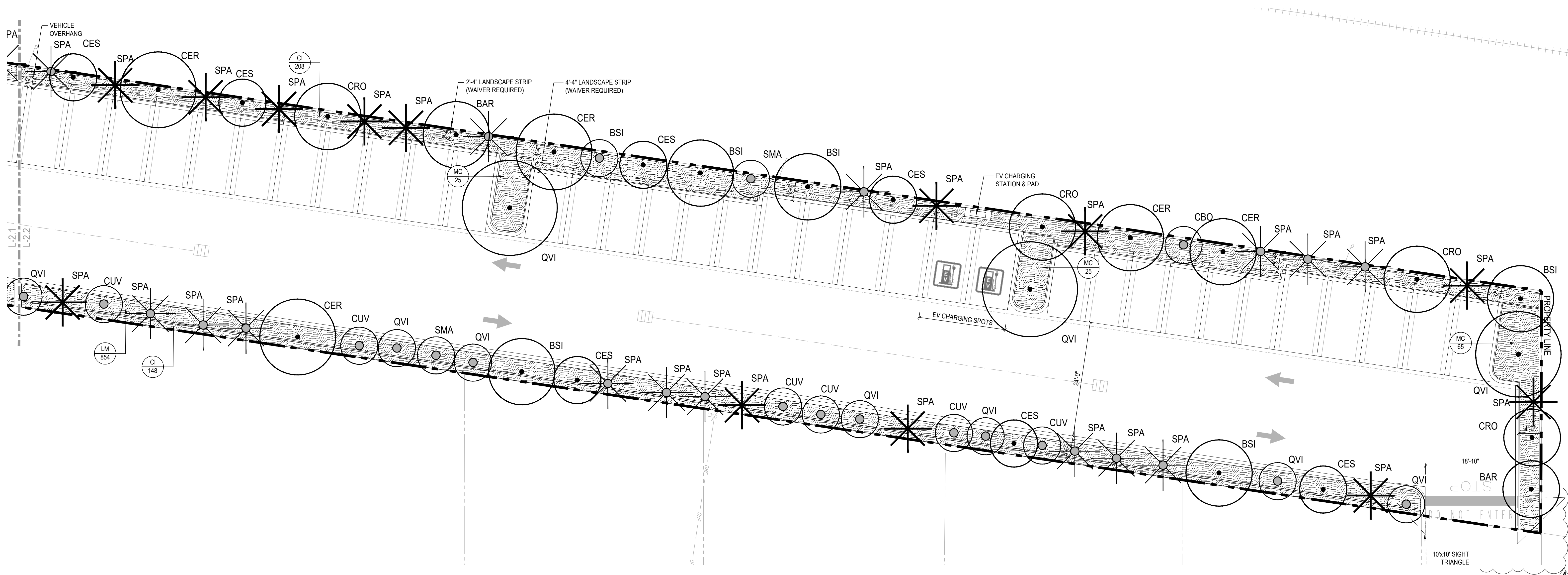
SEAL:
LANDSCAPE ARCHITECT: Christopher Cabezas

REGISTRATION NO. RLA 6667347

SHEET TITLE:
LANDSCAPE PLAN
ENLARGEMENT

Scale: 1" = 10'-0"
Drawn By: CC
Checked By: CC
Date: 05/10/2023
SHEET NUMBER:

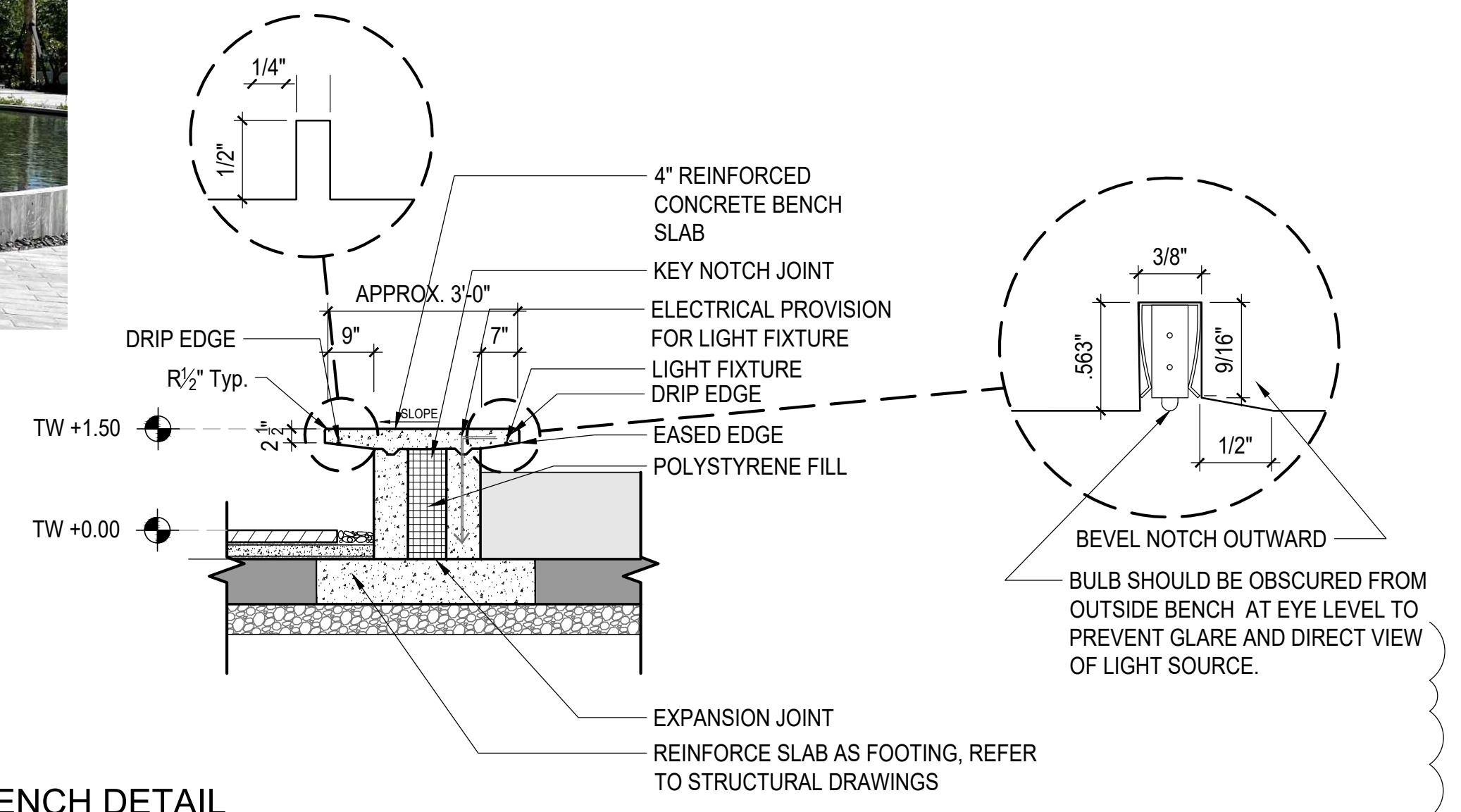
L-2.2



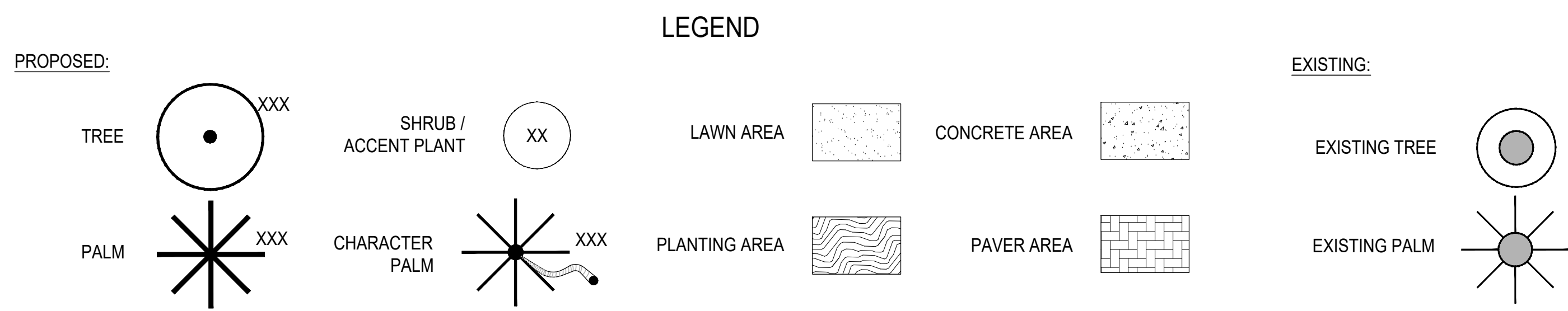
1 WATER FEATURE SECTION
Scale: 1/2" = 1'-0"

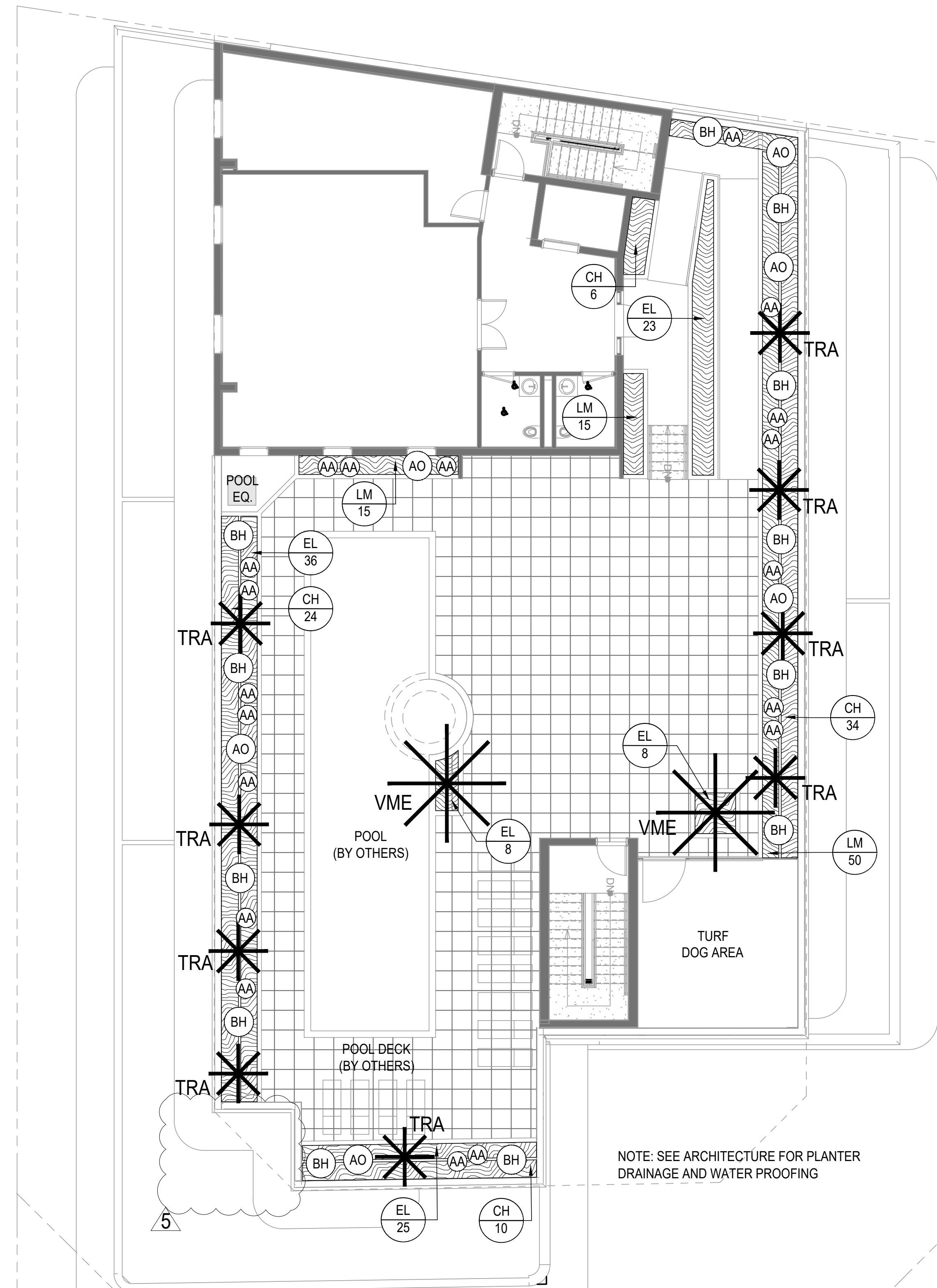


2 WATER FEATURE REFERENCE IMAGE
Scale: NTS



3 BENCH DETAIL
Scale: 1/2" = 1'-0"





PLANT SCHEDULE - ROOFTOP							
PALMS	QTY	Scientific Name	Common Name	Specs	Native	Drought Tolerant	Notes
TRA	9	Thrinax radiata	Florida Thatch Palm	5' CT, 8' HT Min.	✓	✓	Single trunk
VME	2	Veitchia merillii	Christmas Palm	16' HT, 8' CT		✓	Single trunk
SHRUBS	QTY	Scientific Name	Common Name	Specs	Native	Drought Tolerant	Notes
CH	74	Chrysobalanus icaco 'Horizontal'	Horizontal Cocoplum	7 Gallon, Full	✓	✓	30" O.C.
GROUND COVERS	QTY	Scientific Name	Common Name	Specs	Native	Drought Tolerant	Notes
EL	100	Eriosea littoralis	Golden Beach Creeper	1 Gallon, Full	✓	✓	12" O.C.
LM	80	Liriope Muscari 'Super Blue'	Lilyturf	1 Gallon, Full		✓	12" O.C.
ACCENTS	QTY	Scientific Name	Common Name	Specs	Native	Drought Tolerant	Notes
AA	19	Agave attenuata	Same	7 Gallon		✓	Per Plan
AO	6	Alcantarea odorata	Same	7 Gallon		✓	Per Plan
BH	11	Bougainville 'Hawaiian Torch'	Same	15 Gallon		✓	Per Plan

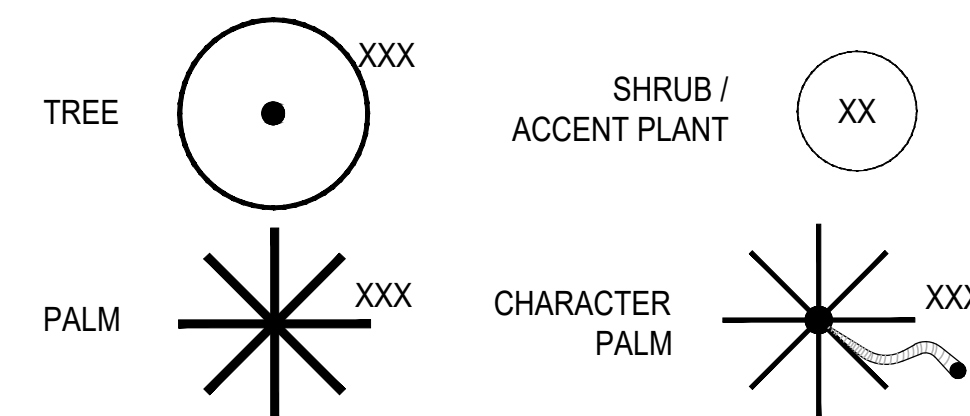
PROJECT:
THE MAXWELL - 306 NE 2ND STREET DELRAY BEACH, FL 33483
LANDSCAPE PERMIT DRAWINGS
CLIENT:
THE MAXWELL

REVISIONS:	
▲	11/17/23 CITY COMMENTS
▲	5/15/24 CITY COMMENTS
▲	8/29/24 CITY COMMENTS
▲	10/20/24 CITY COMMENTS
▲	02/19/25 CITY COMMENTS

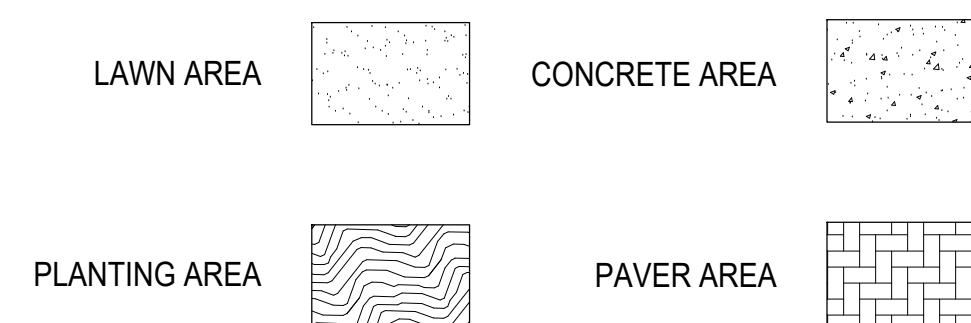
No. Date Description

SEAL:
LANDSCAPE ARCHITECT: Christopher Cabezas

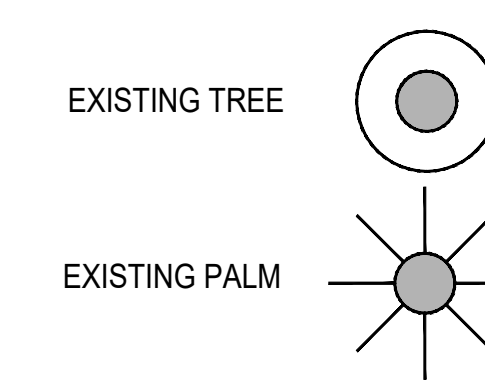
PROPOSED:



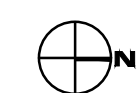
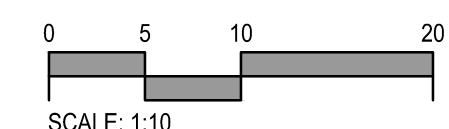
LEGEND



EXISTING:



Know what's below.
Call before you dig.



REGISTRATION NO. RLA 6667347

SHEET TITLE:

ROOFTOP
LANDSCAPE PLAN

Scale: 1" = 10'-0"
Drawn By: CC
Checked By: CC
Date: 05/10/2023
SHEET NUMBER:

L-2.3

