

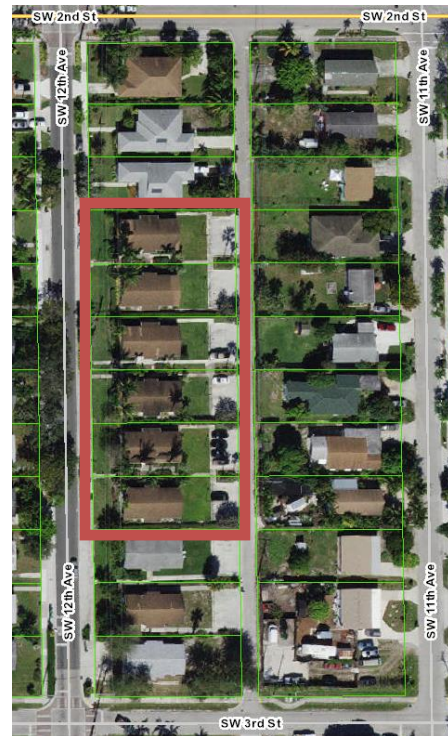
## Exhibit A

### Property Map

**Courtyards on 12<sup>th</sup>** consists of six (6) duplexes (two (2) individual units within each duplex for a total of 12 units) that are located south of Atlantic Avenue on the east side of Southwest 12<sup>th</sup> Avenue, between Southwest 2<sup>nd</sup> Street and Southwest 3<sup>rd</sup> Street. Each duplex is approximately 1,352 square feet (each unit within each duplex is approximately 676 square feet). Each duplex has four (4) parking spaces that back-out onto the adjacent alley. Along Southwest 12<sup>th</sup> Avenue, streetscape improvements adjacent to the properties include on-street (parallel) parking with landscape nodes and sidewalks.

Aerial Overview:

Properties are outlined in red.



**Property Addresses, Parcel Control Numbers (PCN), and Legal Descriptions:**

1. **213-215 SW 12<sup>th</sup> Avenue**  
PCN: 12434617230070040  
Legal Description:  
ATLANTIC GARDENS DELRAY LOT 4 BLK 7
  
2. **217-219 SW 12<sup>th</sup> Avenue**  
PCN: 12434617230070050  
Legal Description:  
ATLANTIC GARDENS DELRAY LOT 5 BLK 7
  
3. **221-223 SW 12<sup>th</sup> Avenue**  
PCN: 12434617230070060  
Legal Description:  
ATLANTIC GARDENS DELRAY LOT 6 BLK 7
  
4. **225-227 SW 12<sup>th</sup> Avenue**  
PCN: 12434617230070070  
Legal Description:  
ATLANTIC GARDENS DELRAY LOT 7 BLK 7
  
5. **229-231 SW 12<sup>th</sup> Avenue**  
PCN: 12434617230070080  
Legal Description:  
ATLANTIC GARDENS DELRAY LOT 8 BLK 7
  
6. **233-235 SW 12<sup>th</sup> Avenue**  
PCN: 12434617230070090  
Legal Description:  
ATLANTIC GARDENS DELRAY LOT 9 BLK 7