

Arts WAREHOUSE

A Project of the Delray Beach CRA



DELRAY BEACH CRA
COMMUNITY REDEVELOPMENT AGENCY

JULY - AUGUST 2025 REPORT

Events

Summer Openings Event - July 10 (180 Visitors)

First Friday Art Walk - August 1 (159 visitors)

Co-Working Studio - Weekly

Artist & Curator Talk - August 16th 11am

Art Education



**20 Workshops
scheduled in August**

**19 Workshops
scheduled in July**

[Click Here](#) for Workshop Registration

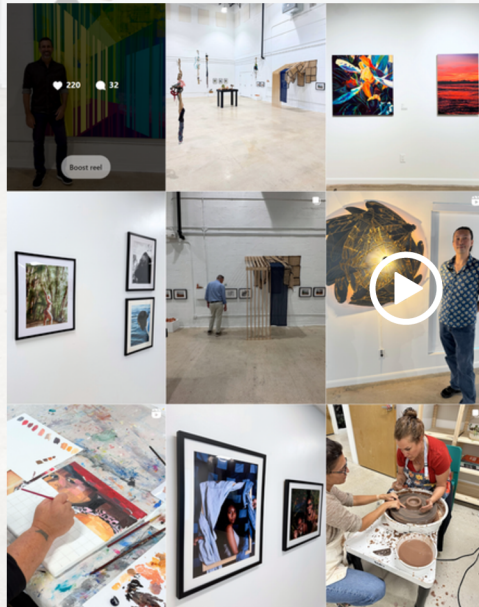
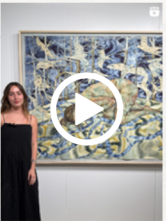
Media Outreach

July 15th - August 10th:

Accounts Reached 9.5k

Followers 7,947 +207

Views 53.8k



Current Exhibitions

Front Gallery



summer heat
Reflecting on the multifaceted nature of the season when days are longest and darkness is shortest.

July 10th - August 23rd, 2025

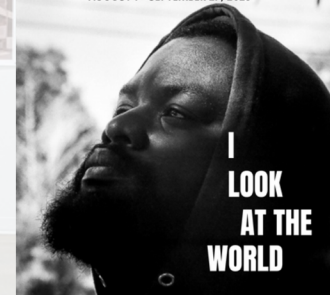
Back Room Gallery

**Beyond
Art &
Architecture**

July 10 - Sep 5, 2025

East Gallery

AUGUST 1 - SEPTEMBER 27, 2025



Resident Artist Program

13 Current Resident Artists



**Newsletter
sent monthly**



artswarehouse.org



[@artswarehousedelray](https://www.instagram.com/artswarehousedelray)

Arts Warehouse

Regular Business Hours for visitors are:

Wednesday - Friday 10am - 7pm,

Saturday 10am - 5pm, or by appointment



This Delray Beach Community Redevelopment Agency rehabilitated warehouse is located on Artist Alley in the Pineapple Grove district opened in late 2017. Arts Warehouse is an Art space that includes studio artists, holds gallery exhibitions, visual art workshops, professional development opportunities, talks, and special events. The 15,000 sq. ft. space is a catalyst for economic development and growth within the Pineapple Grove Arts District and the community as a whole, supporting artists as small businesses.

Click here to learn more about the CRA's Redevelopment Efforts