

# **DELRAY BEACH**

## **DOWNTOWN EMPLOYEE PARKING PROGRAM**



# PARTNERSHIP



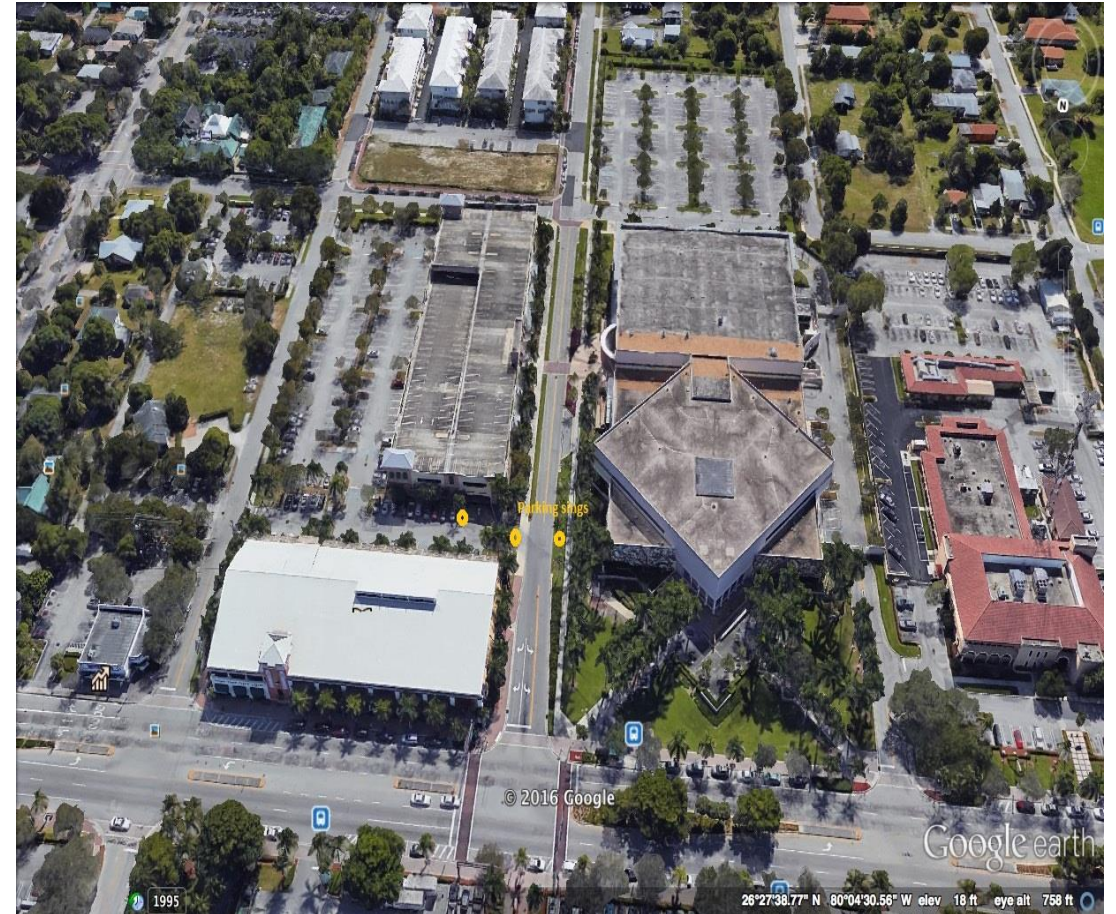
## **GOAL:**

- Provide more parking for customers and guest to downtown Delray Beach
- Help with the traffic congestion
- Provide convenient safe parking for downtown employees working in downtown area restaurants, bars and retail
- 350 parking spaces available for employee parking program and special events
- Operate a parking facility that is currently underutilized during peak hours for the downtown core



# ***PROGRAM DETAILS:***

- Downtown employee parking will be available at the South County Courthouse garage
- Available 7 days a week at 3 PM to 3 AM
- \$20 per month per employee, \$5 per vehicle for special events
- Garage will be stocked by the City during operational hours
- Forms for permits will be available at City Hall or Delray Beach website



# ***HOURS & PARKING SPACES***

DAY	HOURS	TOTAL PERMITTED GARAGE SPACES
Weekdays	3:00 PM – 6:00 PM	200 spaces
Weekdays	6:01 PM – 3:00 AM	350 spaces
Weekends/Holidays (Only if Courthouse Closed to Public)	11:00 AM – 3:00 AM	350 spaces
New Year's Eve thru New Year's Day	See Weekdays or Weekends Hours for start time depending on day of the week. New Year's Eve use will continue to 5:00 AM New Year's Day.	Weekdays or Weekends Total Permitted Garage Spaces apply depending on day of the week.
Other Closures	Variable	Variable



# ***SIGNAGE***

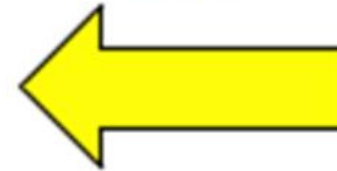
**ATTENTION**

\*\*\*\*\*

**Parking Garage  
closes at 3 AM  
Vehicles remaining  
will be towed**



**Delray Beach  
Downtown  
Employee  
Parking**





# ***IMPLEMENTATION PLAN:***

- Soft Launch August 2016
- Communication: meetings, letters/mailings, host a “Registration Day” downtown
- Operations will be 3 PM to 3 AM, Monday - Sunday
- Garage will have security and parking enforcement
- DDA is working on partnering for employee transportation to/from downtown
- After 90 days, will evaluate on compliance, usage, turnover, ease of the administration, messaging and awareness
- Work closely with DDA step by step
- Full launch in November 2016



# QUESTIONS?

