

Exhibit 2
Item (b) Portion of Plat to
be vacated
(follows this page)

This is not a certified copy

DEDICATION

KNOW ALL MEN BY THESE PRESENTS THAT ATLANTIC GROVE PARTNERS, L.L.C., A FLORIDA LIMITED LIABILITY COMPANY...

PARCELS 1

LOTS 16 THROUGH 21, INCLUSIVE, BLOCK 36, REVISED PLAT OF BLOCK 36, TOWN OF DELRAY, ACCORDING TO THE MAP...

TOGETHER WITH

THAT PORTION OF THE WEST HALF OF THE 16 FOOT ALLEY RIGHT OF WAY, BLOCK 36, MAP OF LINTON (NEW DELRAY BEACH)...

TOGETHER WITH

THAT PORTION OF TRACT "R - 2", ATLANTIC GROVE, PLAT BOOK 96, PAGES 55 THROUGH 58 AND A PORTION OF TRACT "R - 2", ATLANTIC GROVE...

TOGETHER WITH

THAT PORTION OF TRACT "R - 2", ATLANTIC GROVE, PLAT BOOK 96, PAGES 55 THROUGH 58 AND A PORTION OF TRACT "R - 2", ATLANTIC GROVE...

TOGETHER WITH

THAT PORTION OF THE EAST HALF OF THE 16 FOOT ALLEY RIGHT OF WAY, BLOCK 36, MAP OF LINTON (NEW DELRAY BEACH)...

TOGETHER WITH

THAT PORTION OF THE EAST HALF OF THE 16 FOOT ALLEY RIGHT OF WAY, BLOCK 36, MAP OF LINTON (NEW DELRAY BEACH)...

TOGETHER WITH

TRACTS 05-1, 05-2, 05-3 AND 05-4 ARE HEREBY REVEALED TO ATLANTIC GROVE TOWNSHIP ASSOCIATION, INC. A FLORIDA CORPORATION...

TOGETHER WITH

TRACTS 05-1, 05-2, 05-3 AND 05-4 ARE HEREBY REVEALED TO ATLANTIC GROVE TOWNSHIP ASSOCIATION, INC. A FLORIDA CORPORATION...

ATLANTIC GROVE PLAT NO. 2

BEING A REPLAT OF LOTS 16 THROUGH 21, BLOCK 36, REVISED PLAT OF BLOCK 36, TOWN OF DELRAY, PLAT BOOK 5, PAGE 38

AND A PORTION OF THE ALLEY IN BLOCK 36, TOWN OF LINTON, PLAT BOOK 1, PAGE 3

AND A PORTION OF LOT 2, MT. OLIVE BAPTIST CHURCH PROPERTY, PLAT BOOK 69, PAGE 20

AND A PORTION OF THE ALLEY IN BLOCK 28, TOWN OF LINTON, PLAT BOOK 1, PAGE 3

ALL IN THE PUBLIC RECORDS OF PALM BEACH COUNTY, FLORIDA.

LYING IN SECTION 17, TOWNSHIP 46 SOUTH, RANGE 43 EAST, CITY OF DELRAY BEACH, PALM BEACH COUNTY, FLORIDA.

ACKNOWLEDGMENT

IN WITNESS WHEREOF, ATLANTIC GROVE PARTNERS, L.L.C., A FLORIDA LIMITED LIABILITY COMPANY...

ATLANTIC GROVE PARTNERS, L.L.C. A FLORIDA LIMITED LIABILITY COMPANY BY: [Signature]

NEW URBAN ATLANTIC GROVE, L.L.C. A FLORIDA LIMITED LIABILITY COMPANY BY: [Signature]

NEW URBAN COMMITTEE CORPORATION A FLORIDA CORPORATION BY: [Signature]

ATLANTIC GROVE TOWNSHIP ASSOCIATION, INC. A FLORIDA CORPORATION, NOT FOR PROFIT BY: [Signature]

ATLANTIC GROVE TOWNSHIP ASSOCIATION, INC. A FLORIDA CORPORATION, NOT FOR PROFIT BY: [Signature]

ATLANTIC GROVE TOWNSHIP ASSOCIATION, INC. A FLORIDA CORPORATION, NOT FOR PROFIT BY: [Signature]

ATLANTIC GROVE TOWNSHIP ASSOCIATION, INC. A FLORIDA CORPORATION, NOT FOR PROFIT BY: [Signature]

ATLANTIC GROVE TOWNSHIP ASSOCIATION, INC. A FLORIDA CORPORATION, NOT FOR PROFIT BY: [Signature]

ATLANTIC GROVE TOWNSHIP ASSOCIATION, INC. A FLORIDA CORPORATION, NOT FOR PROFIT BY: [Signature]

ATLANTIC GROVE TOWNSHIP ASSOCIATION, INC. A FLORIDA CORPORATION, NOT FOR PROFIT BY: [Signature]

ATLANTIC GROVE TOWNSHIP ASSOCIATION, INC. A FLORIDA CORPORATION, NOT FOR PROFIT BY: [Signature]

ATLANTIC GROVE TOWNSHIP ASSOCIATION, INC. A FLORIDA CORPORATION, NOT FOR PROFIT BY: [Signature]

ATLANTIC GROVE TOWNSHIP ASSOCIATION, INC. A FLORIDA CORPORATION, NOT FOR PROFIT BY: [Signature]

ATLANTIC GROVE TOWNSHIP ASSOCIATION, INC. A FLORIDA CORPORATION, NOT FOR PROFIT BY: [Signature]

ATLANTIC GROVE TOWNSHIP ASSOCIATION, INC. A FLORIDA CORPORATION, NOT FOR PROFIT BY: [Signature]

ATLANTIC GROVE TOWNSHIP ASSOCIATION, INC. A FLORIDA CORPORATION, NOT FOR PROFIT BY: [Signature]

ATLANTIC GROVE TOWNSHIP ASSOCIATION, INC. A FLORIDA CORPORATION, NOT FOR PROFIT BY: [Signature]

ATLANTIC GROVE TOWNSHIP ASSOCIATION, INC. A FLORIDA CORPORATION, NOT FOR PROFIT BY: [Signature]

ATLANTIC GROVE TOWNSHIP ASSOCIATION, INC. A FLORIDA CORPORATION, NOT FOR PROFIT BY: [Signature]

THE FOREGOING INSTRUMENT WAS ACKNOWLEDGED BEFORE ME BY MEANS OF MY PHYSICAL PRESENCE OR BY ONLINE NOTARIZATION...

BY: [Signature] CHRISTI FRENCH (PRINTED NAME) - NOTARY PUBLIC

BY: [Signature] KEVIN E. RICKARD (PRINTED NAME) - NOTARY PUBLIC

BY: [Signature] KEVIN E. RICKARD (PRINTED NAME) - NOTARY PUBLIC

BY: [Signature] KEVIN E. RICKARD (PRINTED NAME) - NOTARY PUBLIC

BY: [Signature] KEVIN E. RICKARD (PRINTED NAME) - NOTARY PUBLIC

BY: [Signature] KEVIN E. RICKARD (PRINTED NAME) - NOTARY PUBLIC

BY: [Signature] KEVIN E. RICKARD (PRINTED NAME) - NOTARY PUBLIC

BY: [Signature] KEVIN E. RICKARD (PRINTED NAME) - NOTARY PUBLIC

BY: [Signature] KEVIN E. RICKARD (PRINTED NAME) - NOTARY PUBLIC

BY: [Signature] KEVIN E. RICKARD (PRINTED NAME) - NOTARY PUBLIC

BY: [Signature] KEVIN E. RICKARD (PRINTED NAME) - NOTARY PUBLIC

BY: [Signature] KEVIN E. RICKARD (PRINTED NAME) - NOTARY PUBLIC

BY: [Signature] KEVIN E. RICKARD (PRINTED NAME) - NOTARY PUBLIC

BY: [Signature] KEVIN E. RICKARD (PRINTED NAME) - NOTARY PUBLIC

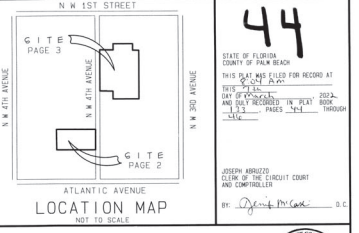
BY: [Signature] KEVIN E. RICKARD (PRINTED NAME) - NOTARY PUBLIC

BY: [Signature] KEVIN E. RICKARD (PRINTED NAME) - NOTARY PUBLIC

BY: [Signature] KEVIN E. RICKARD (PRINTED NAME) - NOTARY PUBLIC

BY: [Signature] KEVIN E. RICKARD (PRINTED NAME) - NOTARY PUBLIC

BY: [Signature] KEVIN E. RICKARD (PRINTED NAME) - NOTARY PUBLIC



CITY OF DELRAY BEACH CITY APPROVAL AND ACCEPTANCE OF DEDICATIONS CITY OF DELRAY BEACH, FLORIDA, A MUNICIPAL CORPORATION...

REVIEWING SURVEYOR'S STATEMENT I AM ACCORDING WITH SECTION 175.001(1), FLORIDA STATUTES, THIS PLAT WAS BEING REVIEWED FOR CONFORMANCE WITH CHAPTER 177, PART 1, FLORIDA STATUTES...

SURVEYOR'S CERTIFICATE THIS IS TO CERTIFY THAT THE PLAT SHOWN HEREON IS A TRUE AND CORRECT REPRESENTATION OF A SURVEY MADE UNDER MY SUPERVISOR'S DIRECTION AND SUPERVISION...

NOTES 1. BEARING SHOWN HEREON ARE BASED ON A GRID BEARING OF NORTH 01°31'28" WEST ALONG THE EAST RIGHT OF WAY LINE OF N.W. 4TH AVENUE...

TITLE CERTIFICATION I HEREBY CERTIFY THAT I HAVE EXAMINED THE TITLE TO THE HEREIN DESCRIBED PROPERTY AND THAT THE PROPERTY IS VESTED IN ATLANTIC GROVE PARTNERS, L.L.C. A FLORIDA LIMITED LIABILITY COMPANY...

ATLANTIC GROVE PLAT NO. 2 THIS INSTRUMENT WAS PREPARED BY RICHARD H. SMITH PROFESSIONAL SURVEYOR AND MAPPER...

Professional information for RICHARD H. SMITH, INC. SURVEYING AND MAPPING, including contact details and a small map of the project area.

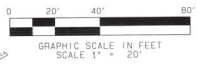
This is not a certified copy

ATLANTIC GROVE PLAT NO. 2

BEING A REPLAT OF
 LOTS 16 THROUGH 21, BLOCK 36, REVISED PLAT OF BLOCK 36, TOWN OF DELRAY,
 PLAT BOOK 5, PAGE 38

A PORTION OF THE ALLEY IN BLOCK 36, TOWN OF LINTON, PLAT BOOK 1, PAGE 3
 AND
 A PORTION OF TRACT "R - 2", ATLANTIC GROVE, PLAT BOOK 96, PAGES 55 THROUGH 58
 AND
 A PORTION OF LOT 2, MT. OLIVE BAPTIST CHURCH PROPERTY, PLAT BOOK 69, PAGE 20
 AND
 A PORTION OF THE ALLEY IN BLOCK 28, TOWN OF LINTON, PLAT BOOK 1, PAGE 3
 ALL IN THE PUBLIC RECORDS OF PALM BEACH COUNTY, FLORIDA.

LYING IN SECTION 17, TOWNSHIP 46 SOUTH, RANGE 43 EAST,
 CITY OF DELRAY BEACH, PALM BEACH COUNTY, FLORIDA.



LEGEND
 ○ CENTERLINE

- PERMANENT REFERENCE MONUMENT SET 50" FROM END AND CAP STAMPED FROM L.B. 1067
- PERMANENT REFERENCE MONUMENT SET 50" FROM END AND STAMPED FROM L.B. 1067

ACCEPTANCE OF RESERVATIONS

STATE OF FLORIDA
 COUNTY OF PALM BEACH
 ATLANTIC GROVE TOWNHOME ASSOCIATION, INC. A FLORIDA CORPORATION, NOT FOR PROFIT,
 HEREBY ACCEPTS THE RESERVATIONS TO THIS ASSOCIATION AS STATED AND
 SHOWN HEREON, AND HEREBY ACCEPTS ITS MAINTENANCE OBLIGATIONS FOR THE SAME AS
 STATED HEREON, DATED THIS 18 DAY OF December, 2021.

ATLANTIC GROVE TOWNHOME ASSOCIATION, INC. A FLORIDA CORPORATION, NOT FOR PROFIT
 BY: Chris New
 EDWIN WINTZ, PRESIDENT
 WITNESS: Maria M. Huck
 PRINT NAME: Maria M. Huck
 WITNESS: Saveria Chavez
 PRINT NAME: Saveria Chavez
 ACKNOWLEDGMENT

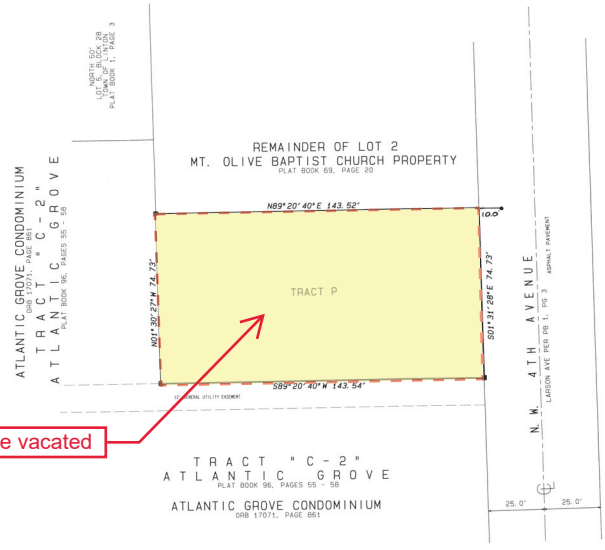
STATE OF FLORIDA
 COUNTY OF PALM BEACH
 THE FOREGOING INSTRUMENT WAS ACKNOWLEDGED BEFORE ME BY MEANS OF X PHYSICAL
 PRESENCE OR ONLINE NOTARIZATION, THIS 18 DAY OF December, 2021,
 BY CHRIS NEW AS PRESIDENT OF ATLANTIC GROVE TOWNHOME ASSOCIATION, INC., A
 FLORIDA CORPORATION, NOT FOR PROFIT, WHO IS PERSONALLY KNOWN TO ME, OR HAS
 PRODUCED POWER OF ATTORNEY (TYPE OF IDENTIFICATION AUTHORITY)
 MY COMMISSION EXPIRES: 12/31/2024
 SIGNATURE: Kevin E. Rickard
 (PRINTED NAME) - SECRETARY PUBLIC

ACCEPTANCE OF RESERVATIONS

STATE OF FLORIDA
 COUNTY OF PALM BEACH
 ATLANTIC GROVE CONDOMINIUM ASSOCIATION, INC. A FLORIDA CORPORATION, NOT FOR
 PROFIT, HEREBY ACCEPTS THE RESERVATIONS OR RESERVATIONS TO THIS ASSOCIATION AS
 STATED AND SHOWN HEREON, AND HEREBY ACCEPTS ITS MAINTENANCE OBLIGATIONS FOR THE
 SAME AS STATED HEREON, DATED THIS 18 DAY OF December, 2021.

ATLANTIC GROVE CONDOMINIUM ASSOCIATION, INC. A FLORIDA CORPORATION, NOT FOR PROFIT
 BY: Kevin E. Rickard
 MICHAEL TORRES, PRESIDENT
 WITNESS: Saveria Chavez
 PRINT NAME: Saveria Chavez
 WITNESS: Kevin E. Rickard
 PRINT NAME: Kevin E. Rickard
 ACKNOWLEDGMENT

STATE OF FLORIDA
 COUNTY OF PALM BEACH
 THE FOREGOING INSTRUMENT WAS ACKNOWLEDGED BEFORE ME BY MEANS OF X PHYSICAL
 PRESENCE OR ONLINE NOTARIZATION, THIS 18 DAY OF December, 2021,
 BY KEVIN E. RICKARD AS PRESIDENT OF ATLANTIC GROVE CONDOMINIUM ASSOCIATION, INC., A
 FLORIDA CORPORATION, NOT FOR PROFIT, WHO IS PERSONALLY KNOWN TO ME, OR HAS
 PRODUCED POWER OF ATTORNEY (TYPE OF IDENTIFICATION AUTHORITY)
 MY COMMISSION EXPIRES: 12/31/2024
 SIGNATURE: Kevin E. Rickard
 (PRINTED NAME) - SECRETARY PUBLIC



Portion of Plat to be vacated

45

ATLANTIC GROVE TOWNHOME ASSOCIATION, INC. ATLANTIC GROVE CONDOMINIUM ASSOCIATION, INC.



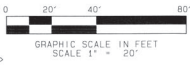
ATLANTIC GROVE PLAT NO. 2	
THIS INSTRUMENT WAS PREPARED BY RICHARD H. SMITH, PROFESSIONAL SURVEYOR AND MAPPER, FLORIDA LICENSE NUMBER 11,50239.	
RICHARD H. SMITH, INC. SURVEYING AND MAPPING FLORIDA LICENSE NUMBER 11,50239 6905 FOREST DALE GROVE LAKE WORTH, FL 33469 (561) 536-8181	PROJECT NUMBER 5700
	SHEET 2 OF 3

This is not a certified copy of a

ATLANTIC GROVE PLAT NO. 2

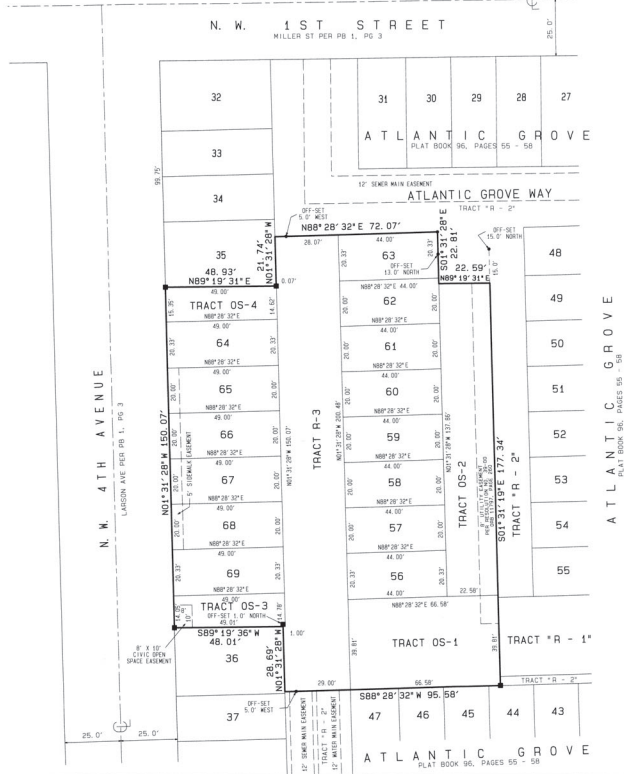
BEING A REPLAT OF
 LOTS 16 THROUGH 21, BLOCK 36, REVISED PLAT OF BLOCK 36, TOWN OF DELRAY,
 PLAT BOOK 5, PAGE 38
 AND
 A PORTION OF THE ALLEY IN BLOCK 36, TOWN OF LINTON, PLAT BOOK 1, PAGE 3
 AND
 A PORTION OF TRACT "R - 2", ATLANTIC GROVE, PLAT BOOK 96, PAGES 55 THROUGH 58
 AND
 A PORTION OF LOT 2, MT. OLIVE BAPTIST CHURCH PROPERTY, PLAT BOOK 69, PAGE 20
 AND
 A PORTION OF THE ALLEY IN BLOCK 28, TOWN OF LINTON, PLAT BOOK 1, PAGE 3
 ALL IN THE PUBLIC RECORDS OF PALM BEACH COUNTY, FLORIDA.
 LYING IN SECTION 17, TOWNSHIP 46 SOUTH, RANGE 43 EAST,
 CITY OF DELRAY BEACH, PALM BEACH COUNTY, FLORIDA.


46



LEGEND

- CENTERLINE
- PERMANENT REFERENCE MONUMENT SET BY F.P. 1504, P.D. AND C.P. STAMER, P.M. 12-19-07
- PERMANENT REFERENCE MONUMENT SET BY W.C. WILLIAMS AND D.P. STAMER, P.M. 12-19-07



ATLANTIC GROVE PLAT NO. 2	
THIS INSTRUMENT WAS PREPARED BY RICHARD H. SMITH, PROFESSIONAL SURVEYOR AND MAPPING FLORIDA LICENSE NUMBER 12,529	
	PROJECT NUMBER 57002
RICHARD H. SMITH, INC. SURVEYING AND MAPPING FLORIDA LICENSE NUMBER 12,529 RHS@rsmth.com 4500 FOREST PALM DRIVE LAKE WORTH, FL 33448 (561) 536-1924	SHEET 3 OF 3