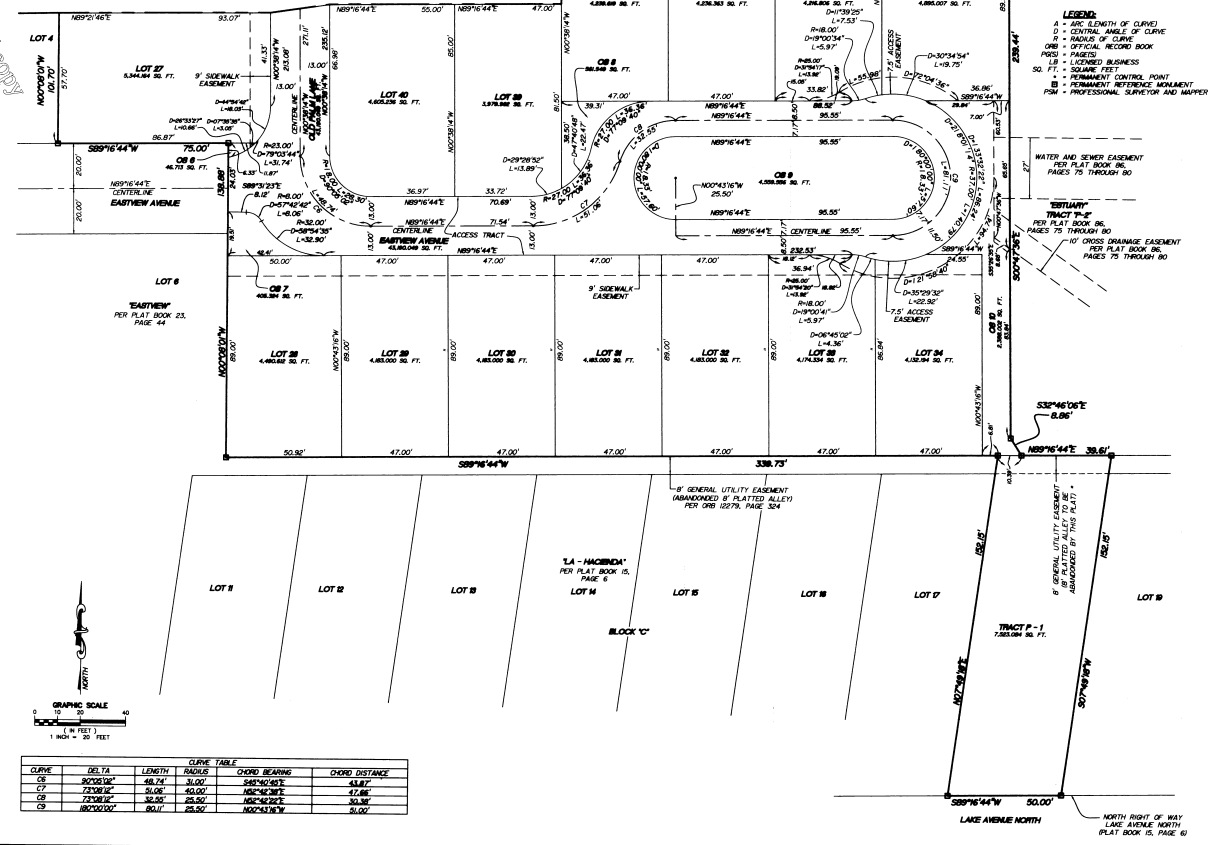


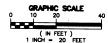
'OLD PALM GROVE'

BEING A REPLAT OF A PORTION OF BLOCK 3, REVISED PLAT OF ROYAL PALM GARDENS, PLAT BOOK 15, PAGE 44;
 LOTS 8, 9, 10, 11 AND 25, BLOCK 8, PLAT NO. 3, ROYAL PALM GARDENS, PLAT BOOK 21, PAGE 57;
 LOT 8, EASTVIEW, PLAT BOOK 23, PAGE 44;
 A PORTION OF LOT 1, CONNECTION MAP SHOWING SUBDIVISION OF PROPERTY OF HARRY REISERLIER SITUATED
 IN LOTS 36, 1, 2 AND 3, SECTION 8, TOWNSHIP 46 SOUTH, RANGE 43 EAST, PALM BEACH COUNTY, FLORIDA, PLAT BOOK 9, PAGE 72;
 LOTS 1, 2, 3, 4 AND 5, BLOCK A, AND A PORTION OF ROYAL PALM BOULEVARD;
 PLAT NO. 3, ROYAL PALM GARDENS, PLAT BOOK 10, PAGE 57; LOT 86, BLOCK C, LA-HACIENDA, PLAT BOOK 15, PAGE 6;
 A PORTION OF LOT 83 AND TRACT 19, ESTUARY II, PLAT BOOK 85, PAGES 29 AND 103;
 SECTION 9, TOWNSHIP 46 SOUTH, RANGE 43 EAST,
 CITY OF DELRAY BEACH, PALM BEACH COUNTY, FLORIDA
 JANUARY 2003
 SHEET 2 OF 5

MATCHLINE SEE SHEET 2 OF 5

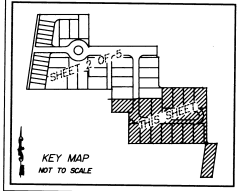


LEGEND:
 A = ARC LENGTH OF CURVE
 C = CENTRAL ANGLE OF CURVE
 R = RADIUS OF CURVE
 OMB = OFFICIAL RECORD BOOK
 PMS = PAGES
 LBS = LICENSED BUSINESS
 S.F. = SQUARE FEET
 P.M. = PERMANENT CONTROL POINT
 P.M. = PERMANENT REFERENCE MONUMENT
 P.M. = PROFESSIONAL SURVEYOR AND MAPPER



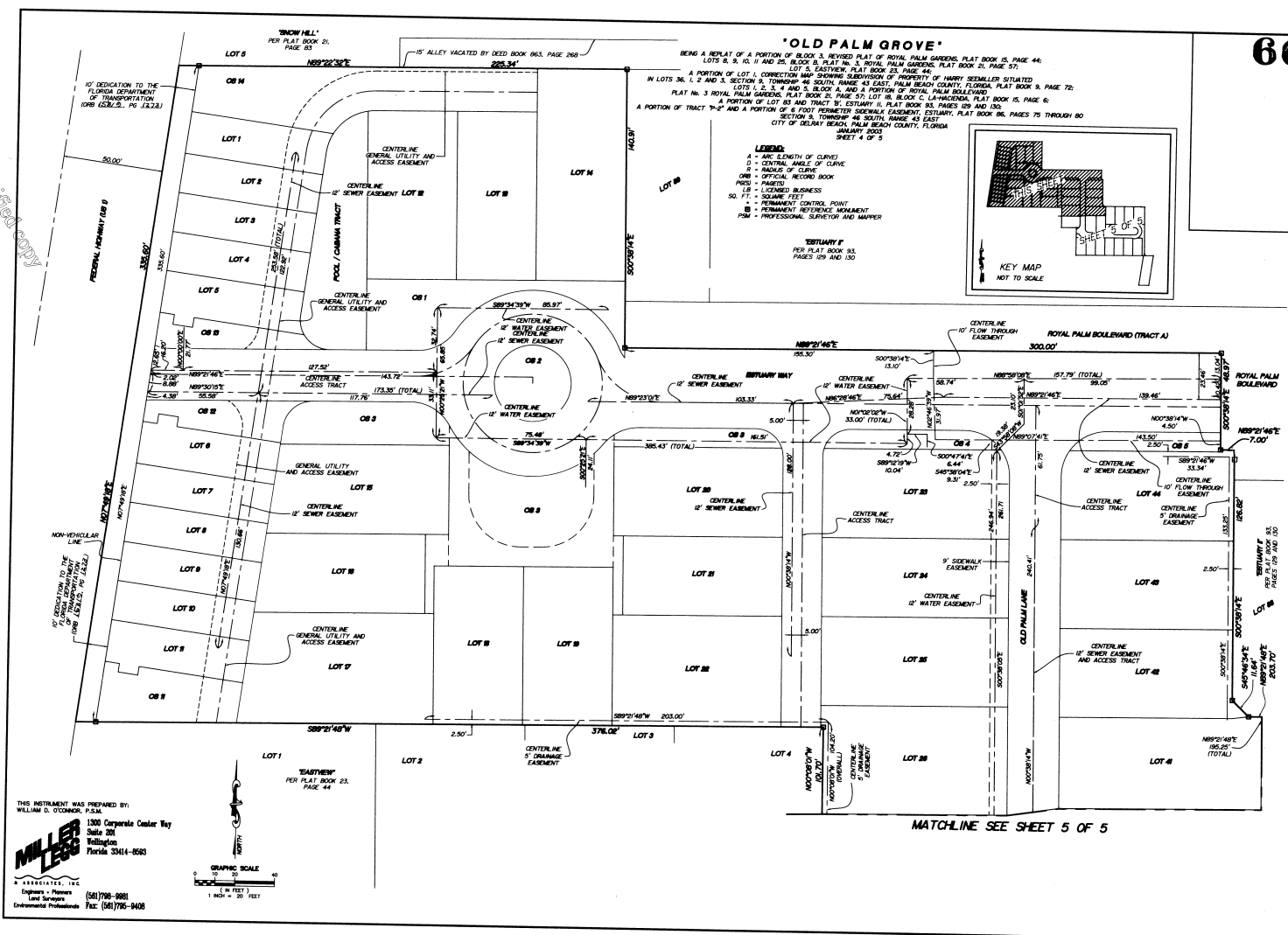
CURVE	DELTA	LENGTH	RADIUS	CHORD BEARING	CHORD DISTANCE
C1	107°05'14"	68.74'	51.00'	S44°10'03"	43.81'
C2	73°06'10"	51.06'	40.00'	N82°42'38"	31.88'
C3	73°06'10"	51.06'	40.00'	N82°42'38"	31.88'
C4	180°00'00"	80.00'	25.00'	N00°43'16"	51.00'

* NOTE: 8' PLATTED ALLEY SHOWN AS PART OF TRACT P-1 IS OWNED BY THE CITY OF DELRAY BEACH AND IS BEING ABANDONED BY THIS PLAT.

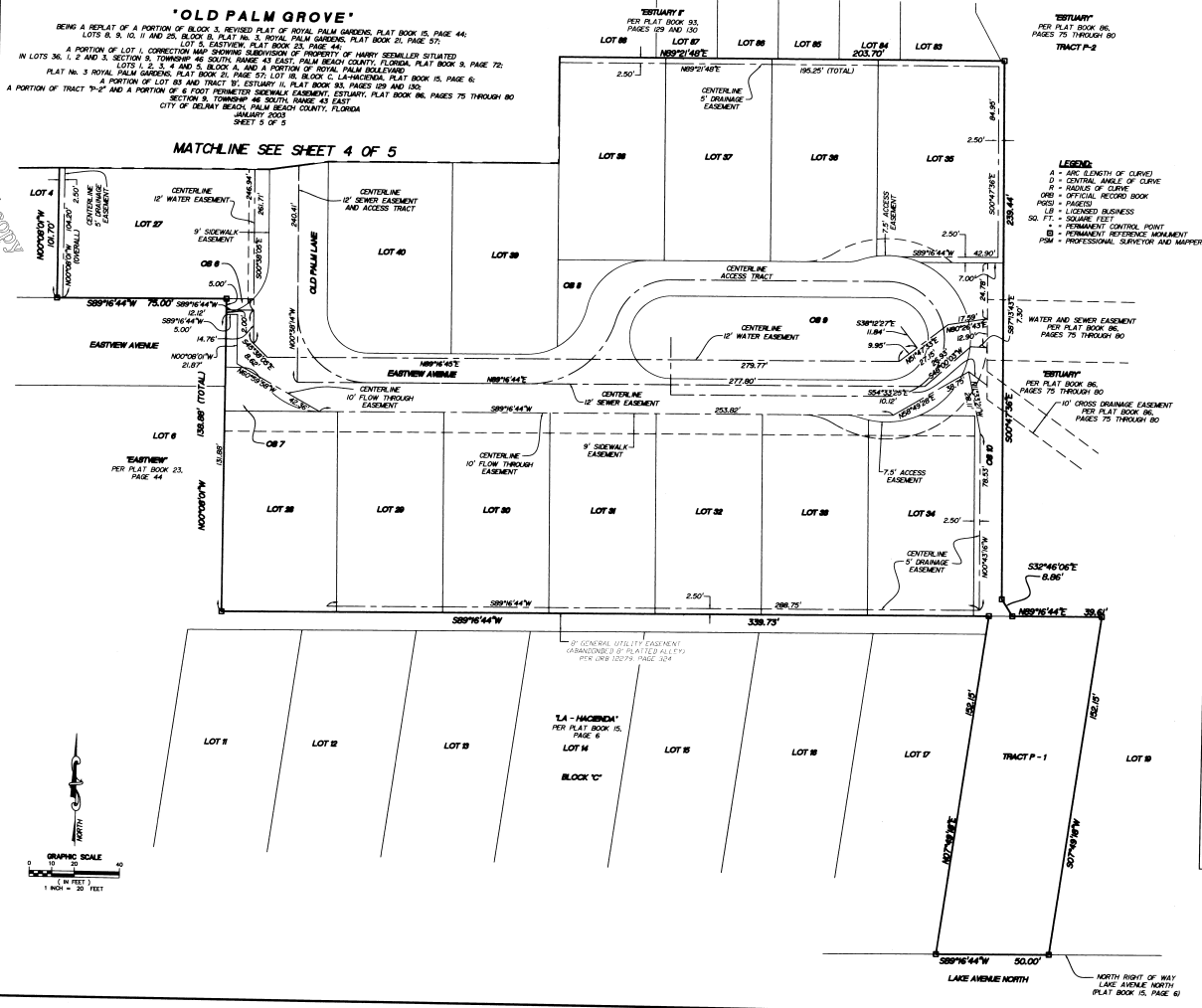


THIS INSTRUMENT WAS PREPARED BY:
 WILLIAM D. O'CONNOR, P.E.S.
 1300 Corporate Center Way
 Suite 201
 Wellington
 Florida 33414-6503
 (561) 798-9900
 Fax: (561) 798-9408

This is not a certified copy



This is not a certified copy



THIS INSTRUMENT WAS PREPARED BY:
WILLIAM D. O'CONNOR, P.S.M.

MILLER LEGG
A ASSOCIATES, INC.
Engineers & Planners
Land Surveyors
Environmental Professionals

1300 Corporate Center Way
Suite 201
Willingboro
Florida 33414-8563

(561) 796-9061
Fax: (561) 796-9408