



BRANCH OUT CONSULTING

2635 SE 10th Street, Pompano Beach FL 33062

Kirstie@branchoutconsultingllc.com

(954)-621-6324

TO: Attention: John DaGrosa
Hodgen Construction & Dev.
1900 N ANDREWS AVE EXT SUITE C
POMPANO BEACH, FL 33069

RE: ISA Certified Arborist Report
2255 S Federal Hwy
Delray Beach, FL 33483

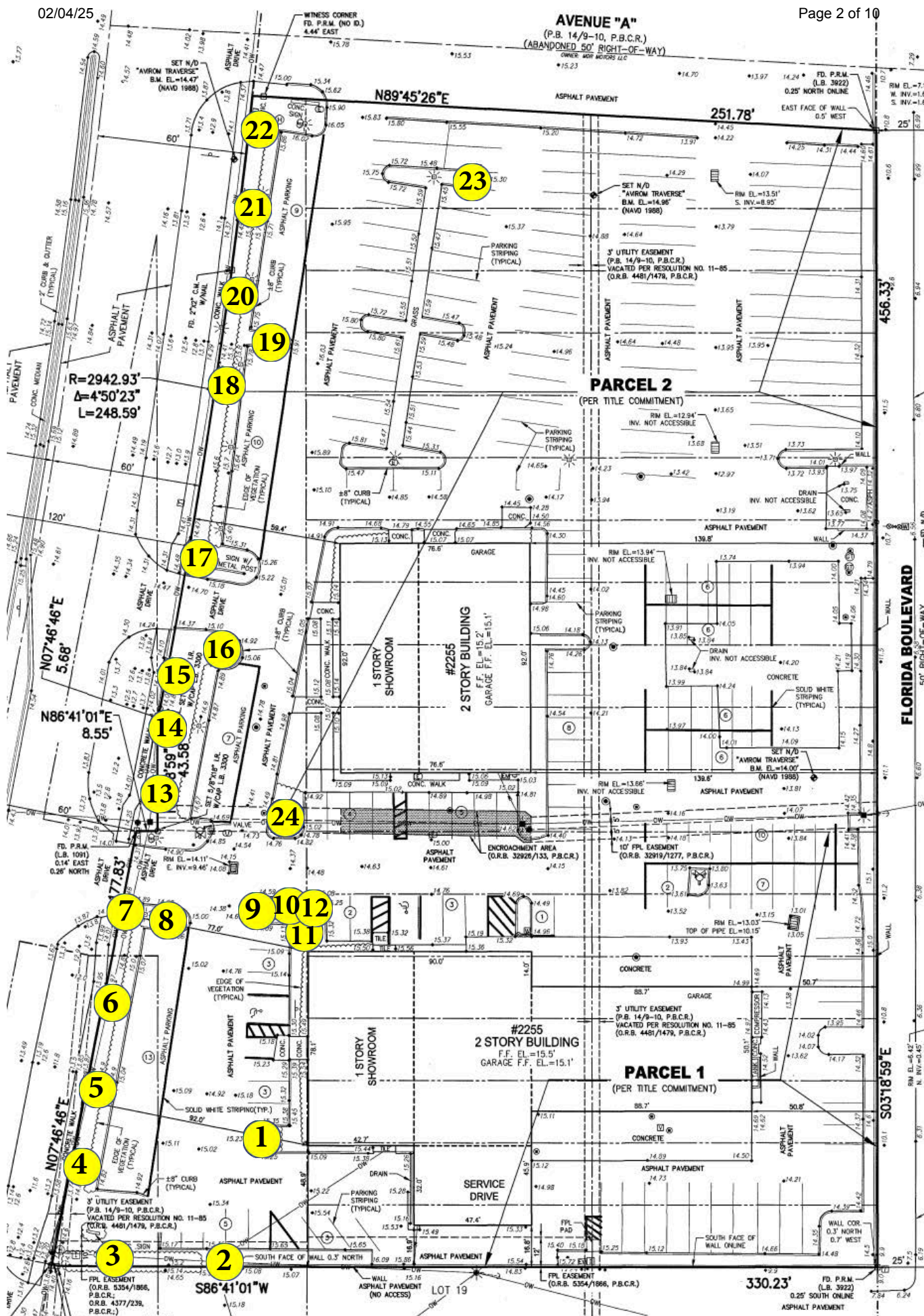
This document is an evaluation of the location, size, and condition of all trees onsite and within the right-of-way at 2255 S Federal Hwy on January 30, 2025. All observations are visual from the ground. Tree locations were mapped as an overlay on existing survey. Existing property survey was cropped to depict tree locations and is not to scale. Palms are single trunk unless otherwise noted. DBH was measured below codominant branches where applicable. This report is not a risk assessment. This report may be utilized for permitting purposes. Tree dispositions determined by others.

Thank you for the opportunity to help resolve your tree issues.

ISA Certified Arborist FL-9601A

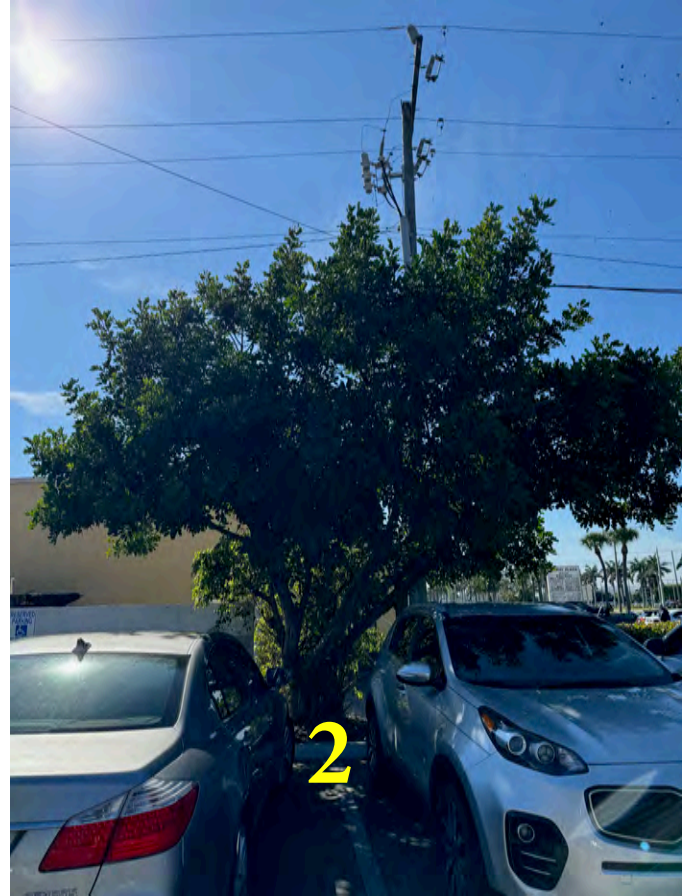
Tree Risk Assessment Qualified (TRAQ)

ASCA Professional Member

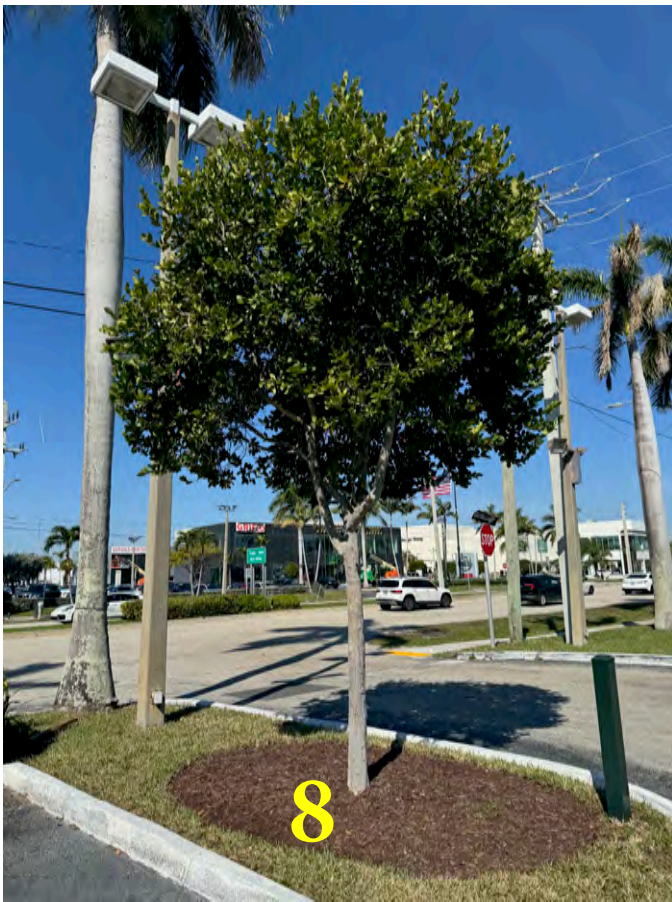


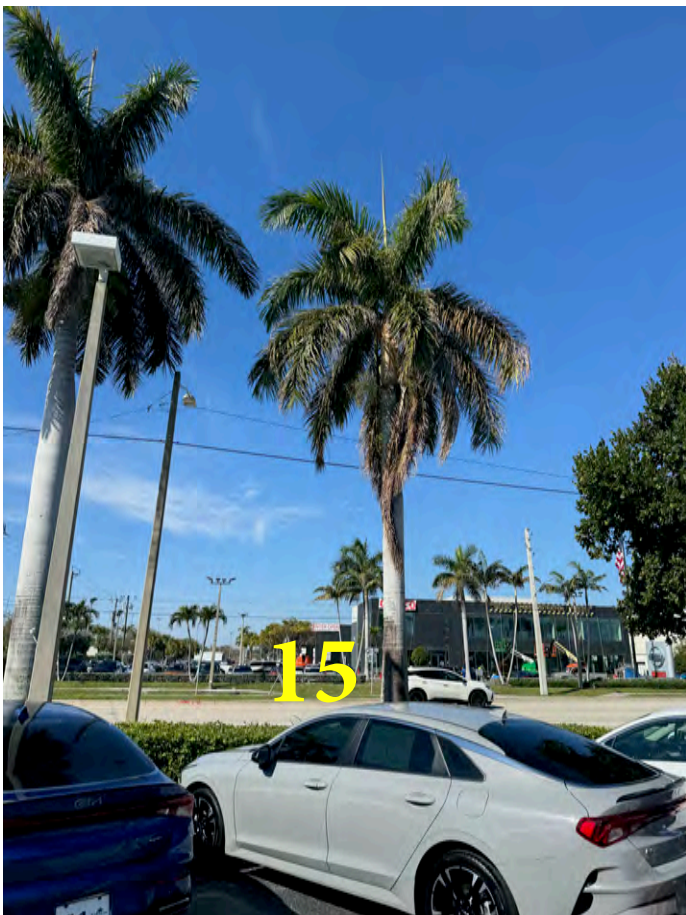
Tree #	Common Name	Botanical Name	DBH (in)	Condition (%)	Height (ft)	Width (ft)	Clear Trunk (ft)	Canopy Coverage (sq ft)	Notes	Disposition
1	Christmas Palm	<i>Adonidia merrillii</i>	1	0	20	15	15	1	Triple trunk. Limited root zone. Chlorotic.	remove
2	Arrowwood	<i>Cupaniopsis anacardioides</i>	22	0	20	20		31	F S category invasive species.	remove
3	Coconut Palm	<i>Cocos nucifera</i>	10	0	20	22	12	3.0		maintain
	Royal Palm	<i>Roystonea regia</i>	20	50	30	1	2	15	Severe penciling.	maintain
5	Royal Palm	<i>Roystonea regia</i>	16	50	0	15	3	1	Penciling, necrotic fronds.	maintain
6	Royal Palm	<i>Roystonea regia</i>	15	60	30	15	2	1	Some penciling.	maintain
	Royal Palm	<i>Roystonea regia</i>	25	60	35	15	1	1	Some penciling.	maintain
	Pigeon Plum	<i>Coccoloba diversifolia</i>	5	0	13			6	Limited root zone. Good structure, health and vigor.	relocate
	Christmas Palm	<i>Adonidia merrillii</i>	12	0	16	10	10		Double trunk. Limited root zone. Chlorotic.	remove
10	Sabal Palm	<i>Sabal palmetto</i>	1	0	15		20	50		relocate
11	Sabal Palm	<i>Sabal palmetto</i>	1	0	25		20	50		relocate
12	Sabal Palm	<i>Sabal palmetto</i>	1	0	20		15	50		relocate
13	Royal Palm	<i>Roystonea regia</i>	21	30	32	10	16		Recently pruned. Chlorotic. Severe penciling in upper half.	remove
1	Royal Palm	<i>Roystonea regia</i>	25	50	25	25	20	1	Some penciling. Necrotic fronds.	relocate

Tree #	Common Name	Botanical Name	DBH (in)	Condition (%)	Height (ft)	Width (ft)	Clear Trunk (ft)	Canopy Coverage (sq ft)	Notes	Disposition
15	oyal Palm	<i>Roystonea regia</i>	22	50	31	15	2	1	Some penciling. ecrotic fronds.	elocate
16	Pigeon Plum	<i>Coccoloba diversifolia</i>	6	55	1			50	ecrotic foliage. ater and or wind stress. ood structure.	elocate
1	oyal Palm	<i>Roystonea regia</i>	1	60	0	15	3	1	Some penciling and chlorosis.	emain
1	oyal Palm	<i>Roystonea regia</i>	15	60	35	15	2	1	Some penciling and chlorosis.	emain
1	Pigeon Plum	<i>Coccoloba diversifolia</i>	6	0	1			50	Limited root zone.	elocate
20	oyal Palm	<i>Roystonea regia</i>	2	60	0	15	32	1	Some penciling and chlorosis.	emain
21	oyal Palm	<i>Roystonea regia</i>	22	60	3	1	30	22	Some penciling and chlorosis.	emain
22	oyal Palm	<i>Roystonea regia</i>	1	60		10	3		Some penciling and chlorosis.	emain
23	Silver Buttonwood	<i>Conocarpus erectus</i>		0	16	12		113	Limited root zone.	elocate
2	hristmas Palm	<i>Adonidia merrillii</i>	1	0	20	15	15	1	Triple trunk.	emove









02/04/25



Page 9 of 10

