

Master Sign Program Atlantic Crossing, Delray Beach, Fla 11/12/21



Created By:
Mark Gregory
Sign Specialist
ES 12-001050
561-716-4531
MGreg01@comcast.net



For the Edwards Companies

Context

The program will be implemented in stages.

Phases as follows:

Phase One South West side of the site. Currently for board review.

- Building 1 - East, South, North and West elevations (North being the internal to the mall)
- Building 3 - East, West and South and Elevations (South being internal to the mall)
- Building 6 South - East elevation Parking Garage Sign

Phase Two To follow

Before the board today we are requesting the following.

Tenant signs for the west and south elevations, the interior mall walk way tenants and a Parking Garage entrance identification

Tenant Signs

Building 1

Naming rights for Building 1 for Bank of American or future tenant

Retail tenants on the first floor.

- Le Colonial, Chico's and others

Building 3

Retail tenants on the first floor

- Hampton Social

Hampton Social Has been removed from the program

Building 6 South

- Center use Parking sign

Program outline

Analysis

(1) site specific sign program unique for the hallmark tenants.

Le Colonial

Hampton Social Removed

Naming rights for Building 1 to Bank or America (Or other future tenant)

External (Road Facing) Tenant signs shall comply with the sizing and placement of existing sign code.

Allowing unique tenant logo and colors

Tenants on corner locations allowed a sign on each frontage. Tenants with front and rear exposure to be allowed signs on both frontages.

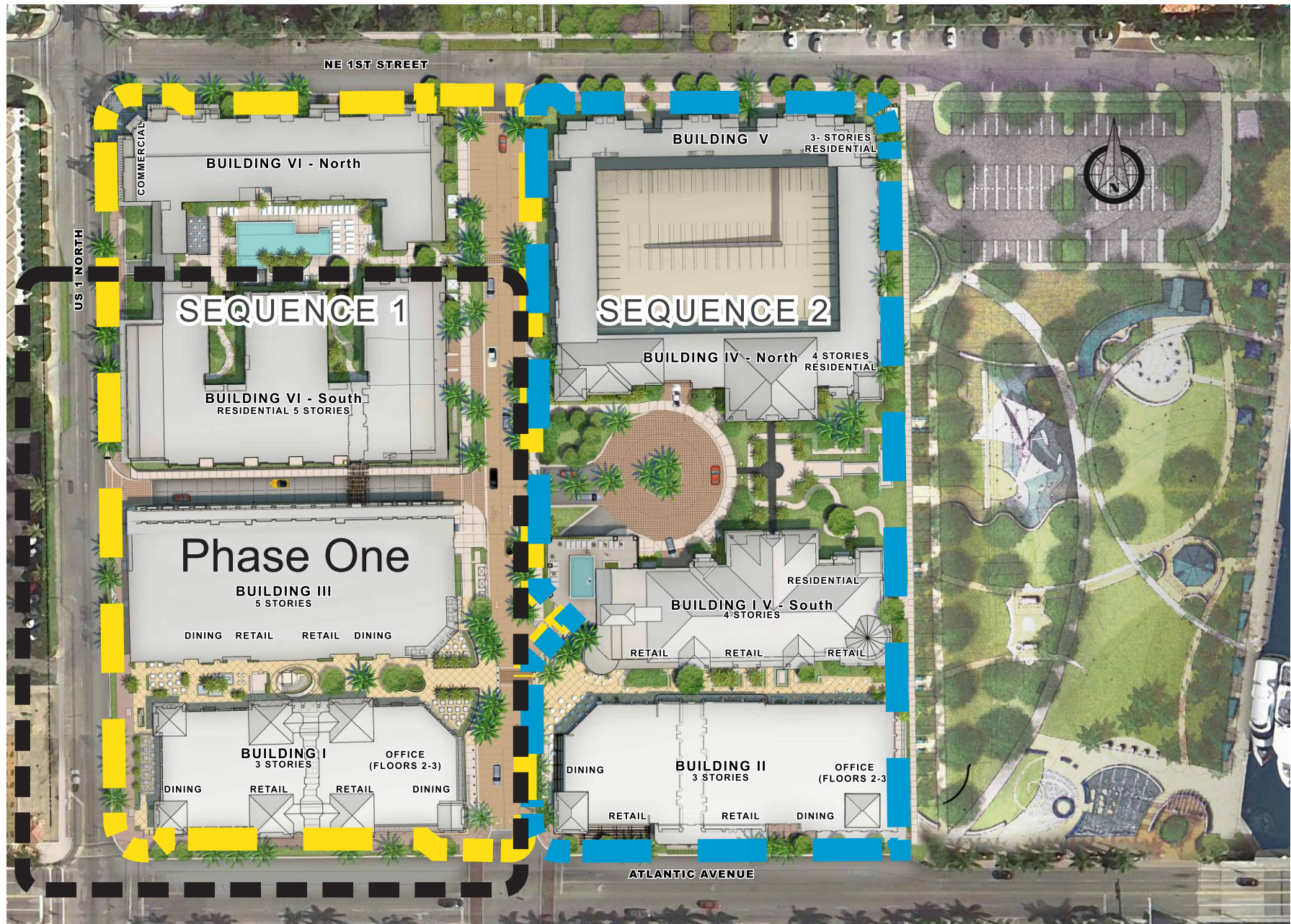
Smaller retail tenants with internal exposure to be allowed a flat wall sign or a projecting sign with window lettering.

Allowing unique shapes with tenant logo and colors

Window lettering to comply with existing city regulations

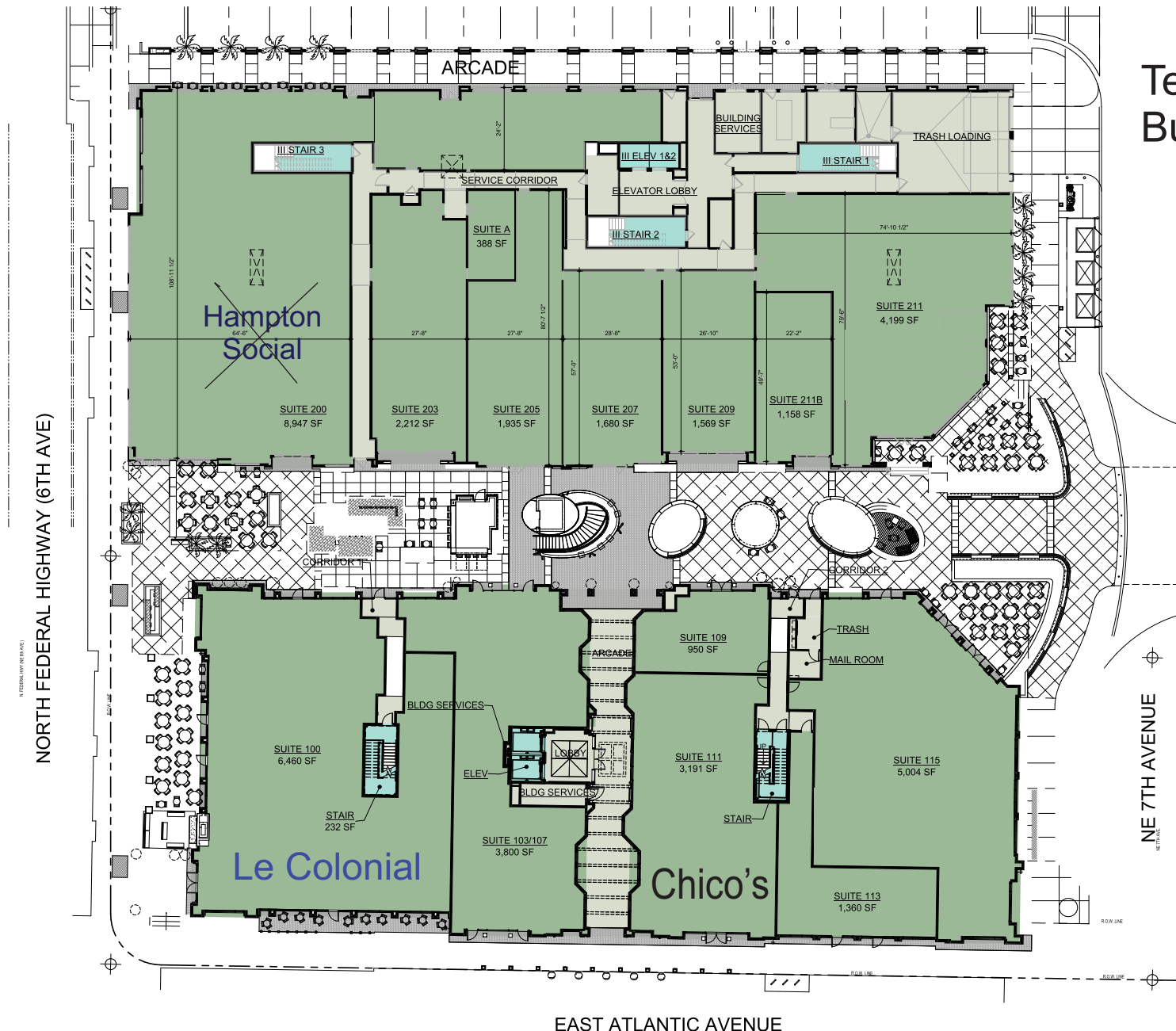
All signs require landlords approved graphic with written approval.

Illustrated Site Plan First Phase program area


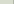
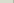


This includes Building 1, Building 3 (for retail Tenants) and the southern part of Building 6 South (for parking garage for ID)

Tenant Placement Building One & Three



MERCHANDISING PLAN LEGEND

-  BUILDING SERVICE AREAS
-  MAJOR VERTICAL PENETRATIONS
-  OCCUPANT AREAS

BUILDING I & BUILDING III - FIRST FLOOR
1/16" = 1'-0"

ATLANTIC CROSSING - BIII

217093
MERCHANDISING PLAN
A001



KEPHART
community planning architecture

Illustration of building mall area



Illustration of building mall area





Corner of Atlantic and 6th Avenues

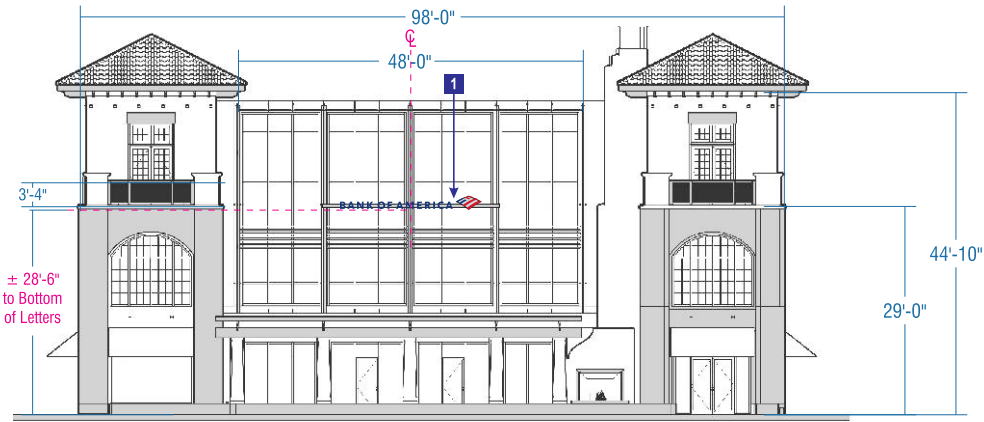


South Side



BUILDING 1 ELEVATIONS

Scale: 1/16" = 1'-0"



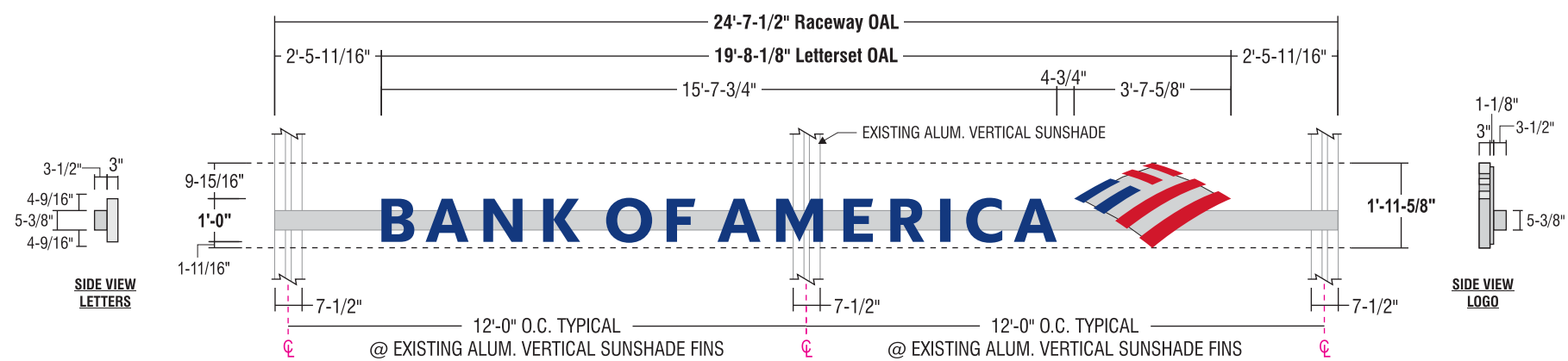
West Elevation



South Elevation








Letter construction detail



- FACES:** 1/2" thick Plaskolite 2406 LD acrylic w/ routed back 5/16" from back leaving a 3/16" thick x 5/32" flange for drop in faces secured thru returns (see detail)
Surface applied vinyl overlays to match colors shown w/ 3M overlamine
- RETURNS:** 3" deep .040 alum returns - aluminum Coil Bright Brushed Clear by Alumet Supply
- BACKS:** .090" alum. backs - insides painted w/ White Light Enhancement paint
- ILLUM.:** Agilight White LED illumination as required by manufacturer or approved equivalent
Remote power supplies
- RACEWAY:** Signcomp aluminum extrusion raceway, painted to match sunshade.
- WALL MATERIAL:** To be provided from survey
- INSTALL:** Raceway is mounted to 1/8" thick formed alum. brackets w/ 3/8"-16 hex head bolts. Formed alum. brackets are attached to the existing vertical sunshade w/ 3/8" dia. threaded rods and 1/4" thick alum. mounting plates.
(2) 3" x 3" x 1/4" Alum. structural angles 11'-2-1/2" long to span in between attachments to vertical sunshade structures.
Paint to match sunshade.
- QUANTITY:** (2) Two lettersets required

COLOR PALETTE

 ALL FACES: Plaskolite 2406 LD	 LOGO FACES: 3M 3630-2413 Red w/ Overlam 3M 3660M
 RETURNS: Brite Brushed Alum. Coil -Alumet Supply	 COPY & LOGO FACES: 3M 3630-8530 Blue w/ Overlam 3M 3660M
	 RACEWAY ATTACHMENTS Paint to Match Sunshade

Building 1 One First Floor

Le Colonial



6th Avenue View

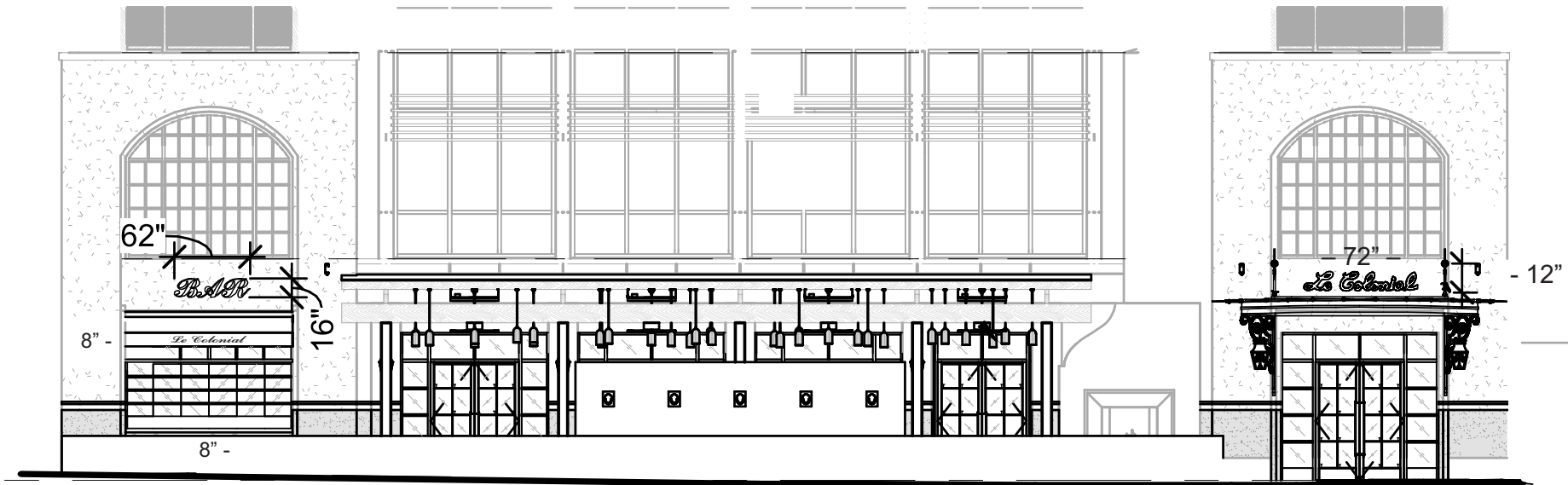


Corner of Atlantic and 6th Avenues

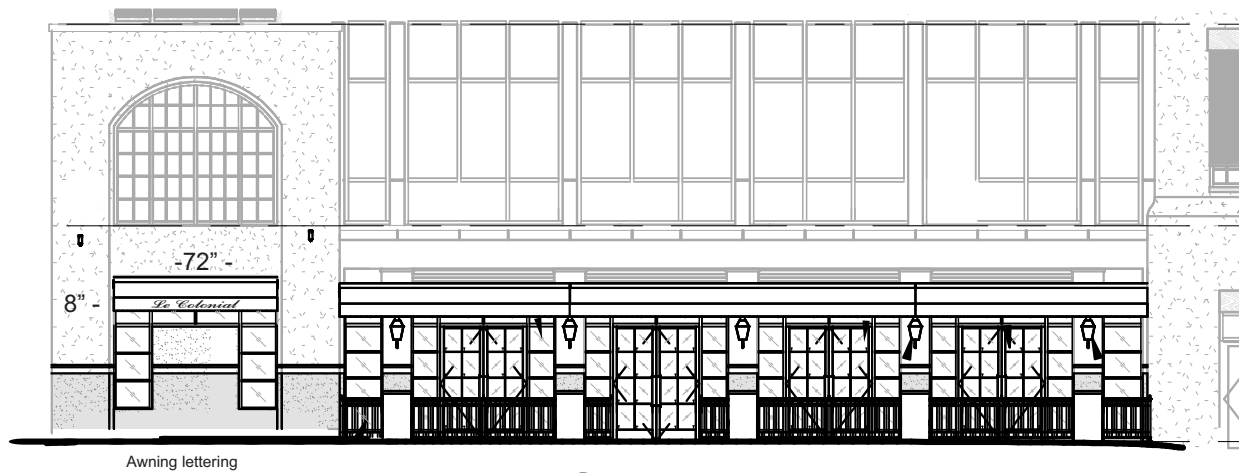


Atlantic Avenue View

Sign locations



West Elevation



South Elevation

Le Colonial
North & West facing sign
Awning Lettering Only

Le Colonial site sign placement

Bar

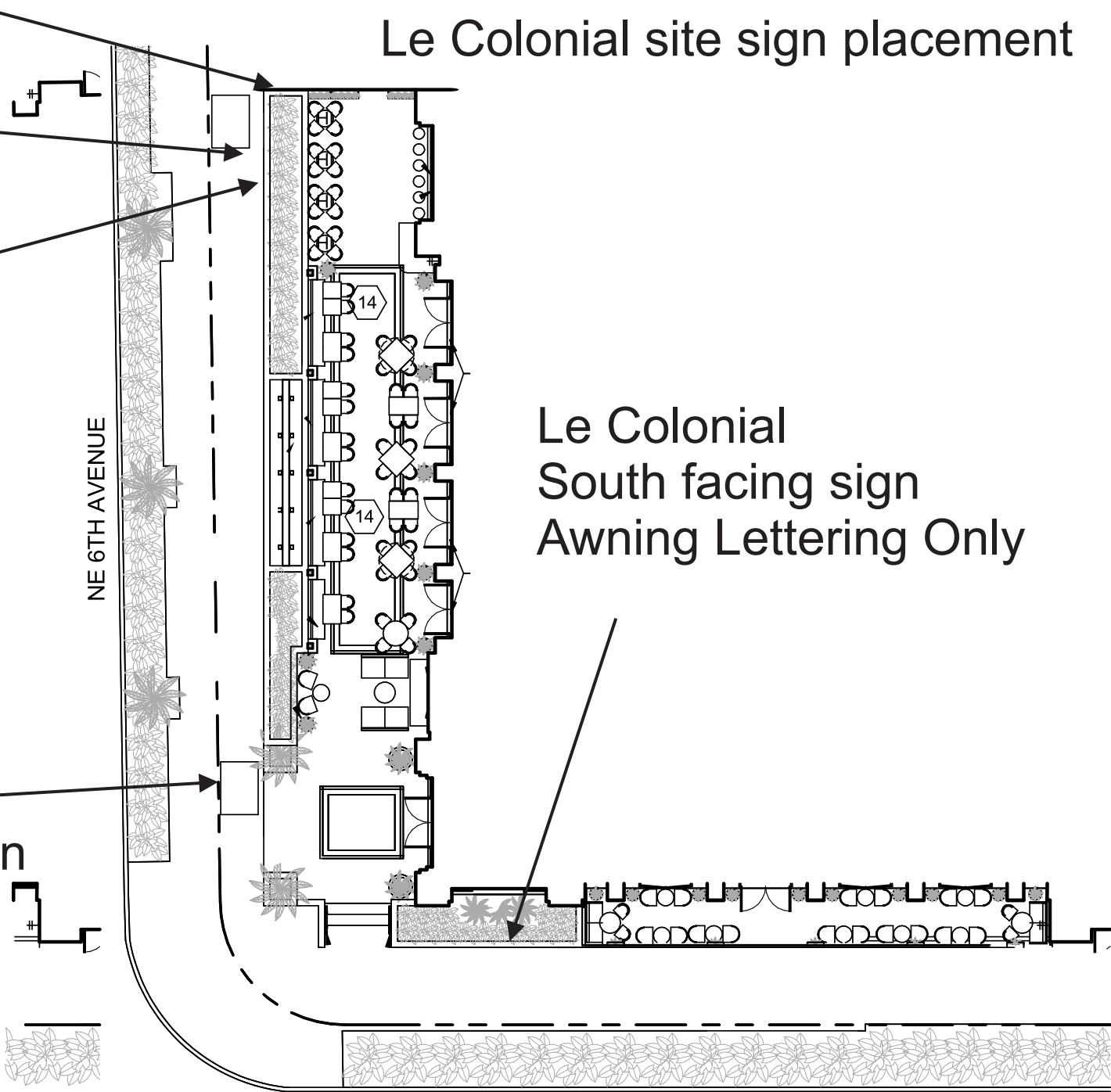
Le Colonial
South facing sign
Awning Lettering Only

Le Colonial
West facing sign

NE 6TH AVENUE

E ATLANTIC AVENUE

PROPOSED

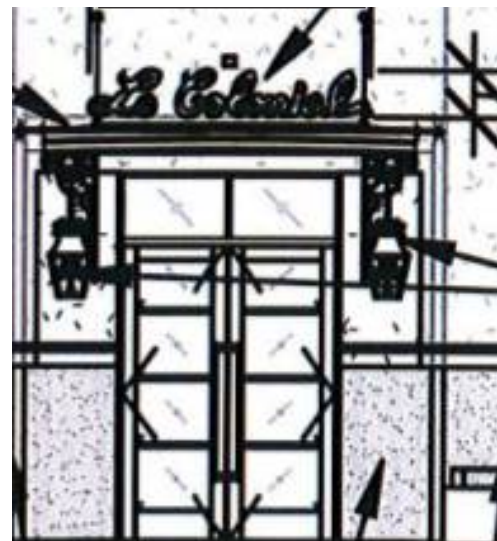
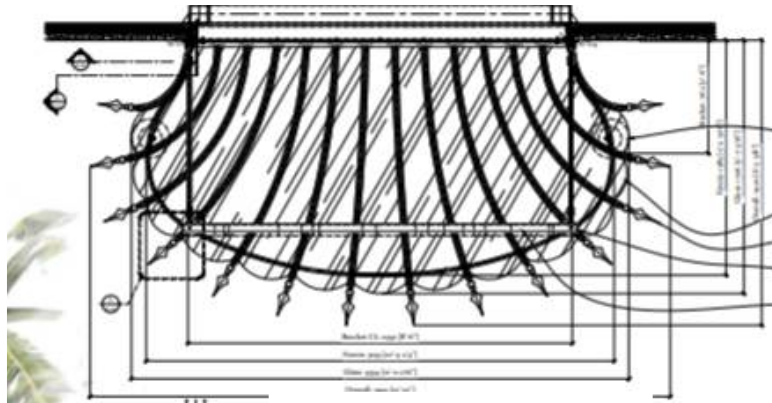
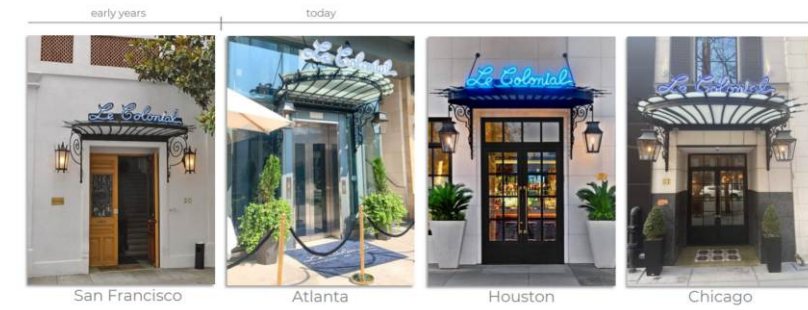


Awnings with one name facing south and the awning with outlining



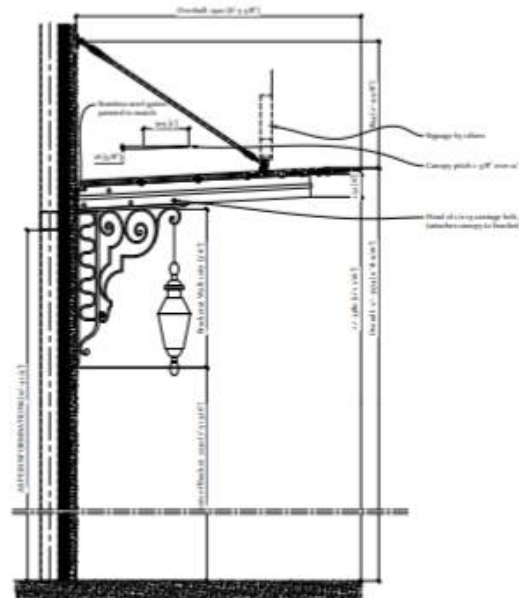
Atlantic Avenue View

The Le Colonial Brand Identity



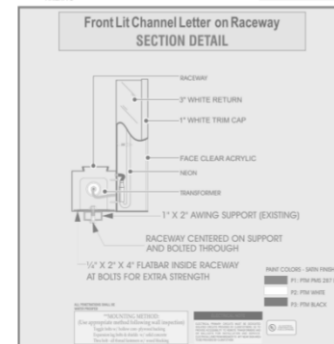
Front Entry Reduced Size

- 12"



SCOPE OF WORK FABRICATE AND INSTALL ONE SET OF ILLUMINATED CHANNEL LETTERS ON A RACEWAY

- RETURN: 1" DEEP .040 ALUMINUM
- BACKING: .040 ALUMINUM
- ILLUMINATION: ONE SOURCE
- TRANSFORMER: 30W INSIDE RACEWAY
- INCREASE IF 1/2" RACEWAY EXISTING ALUMINUM
- RACEWAY MOUNTED DIRECTLY TO A CUSTOM AWNING
- INTERIOR FINISH: F1
- EXTERIOR FINISH: F2
- FINISH: F3



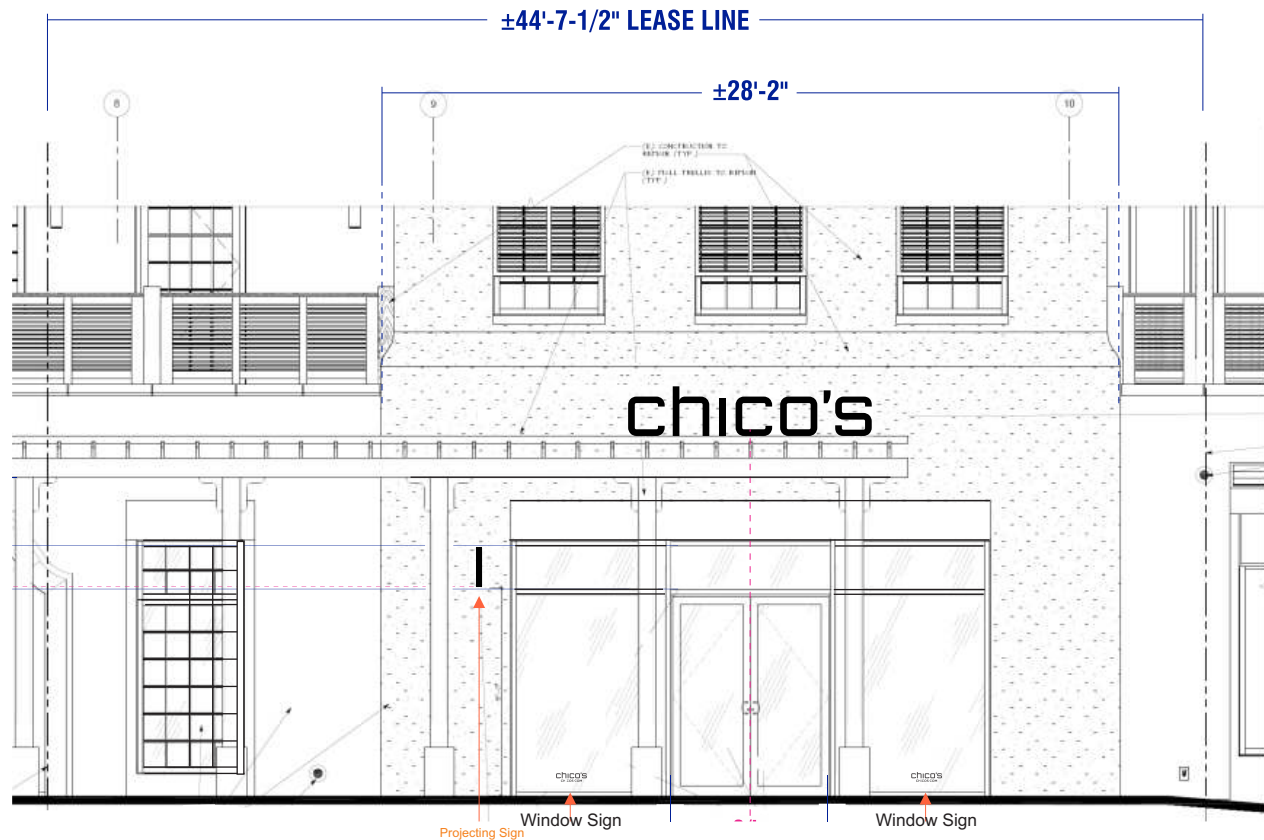
Channel letter General Specifications	
Sign Type	Front Lit Channel Letters
Illumination Type	12mm NEON
LED Color	HORIZON BLUE NEON
Face Material Gauge	3/16"
Face Color	Acrylic / Clear
Return depth Gauge/Color	3" Wide Alum .040 / White
Back Material Gauge	Aluminum .063
Tube Support Type	Glass 10T3 Standard
Transformer Type / mA / volt	15k W / 30mA / 120V Inside Raceway
Retainer screw	#4 x 0.5" lg Hex hd
Wire Type	UL Silicone GTO-15
Electrical Connectors	1/2" Greenfield

Sign Details

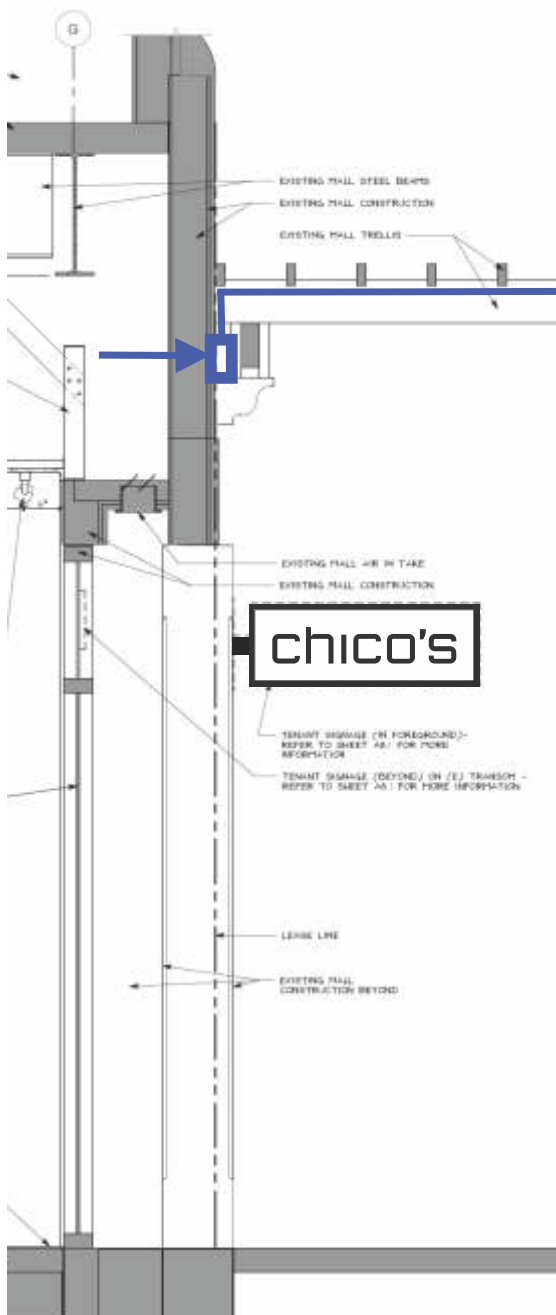
90" wide

18" tall

chico's



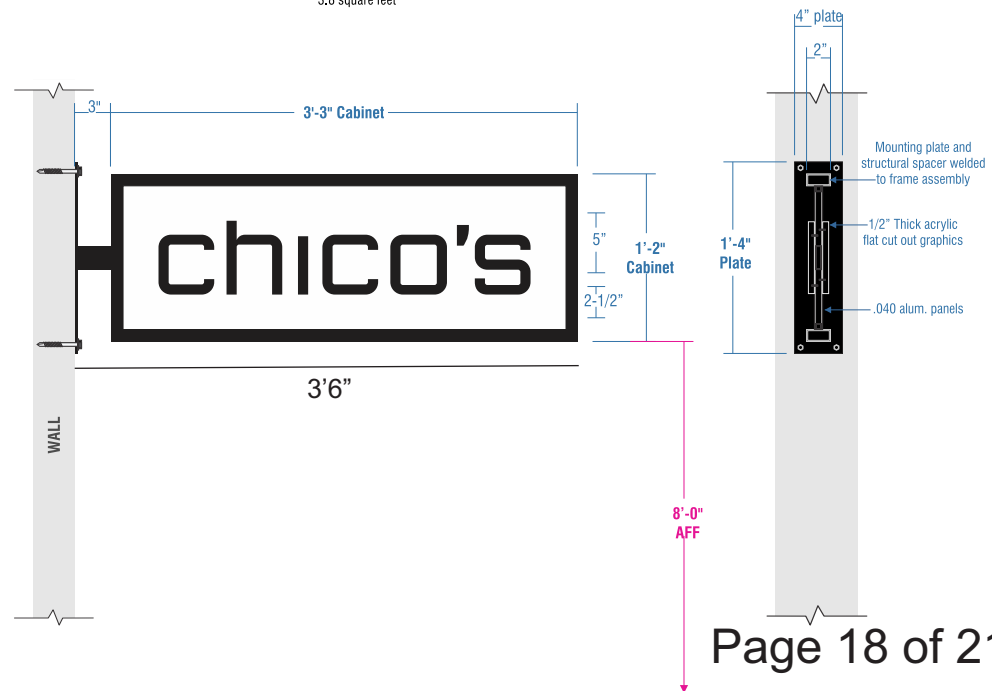
Projecting sign



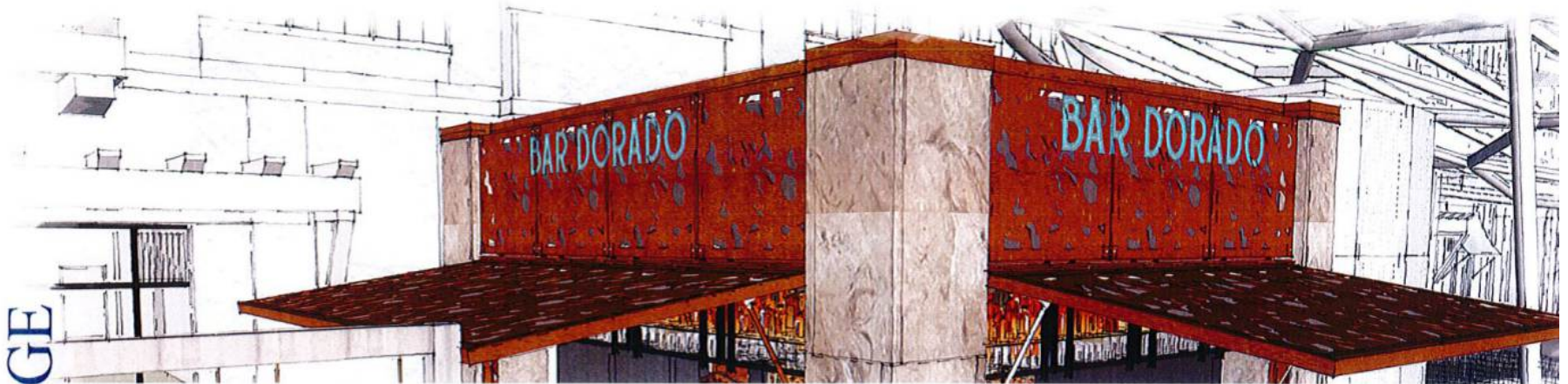
D/F NON-ILLUM. BLADE SIGN

Scale: 1" = 1'-0"

3.8 square feet



SIGNAGE



10" **BAR DORADO**
6'-0"

PIN MOUNTED BACK LIT LETTERS

Rough Cut Out Steel Letters

Turquoise Powder Coated

Benjamin Moore | Mexicali Turquoise | 662 | PMS 2342C

White LED – 3000° K

Two Signs – South + West sides of existing bar structure

See Elevations on previous page for locations

KNAUER

The Hampton Social | Delray Beach FL



PARKER
RESTAURANT GROUP 28

Bar Dorado interior to the mall
West and south side of mall kiosk

Based on a 42" projection

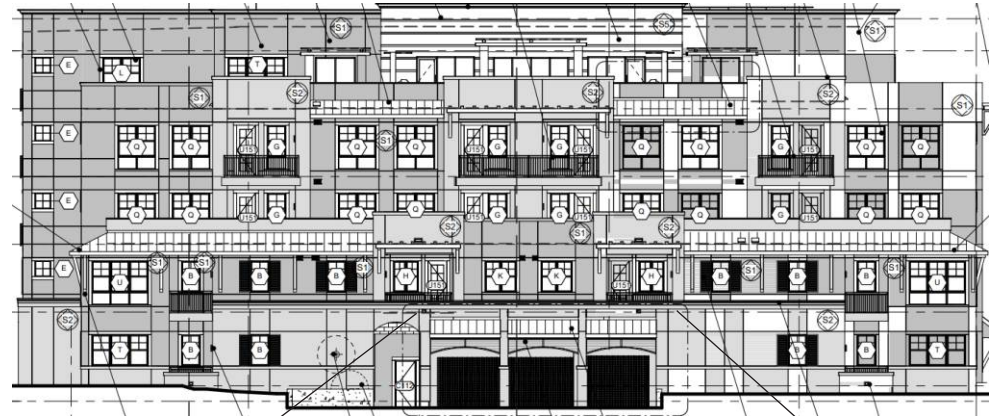


40"

Parking Garage Sign

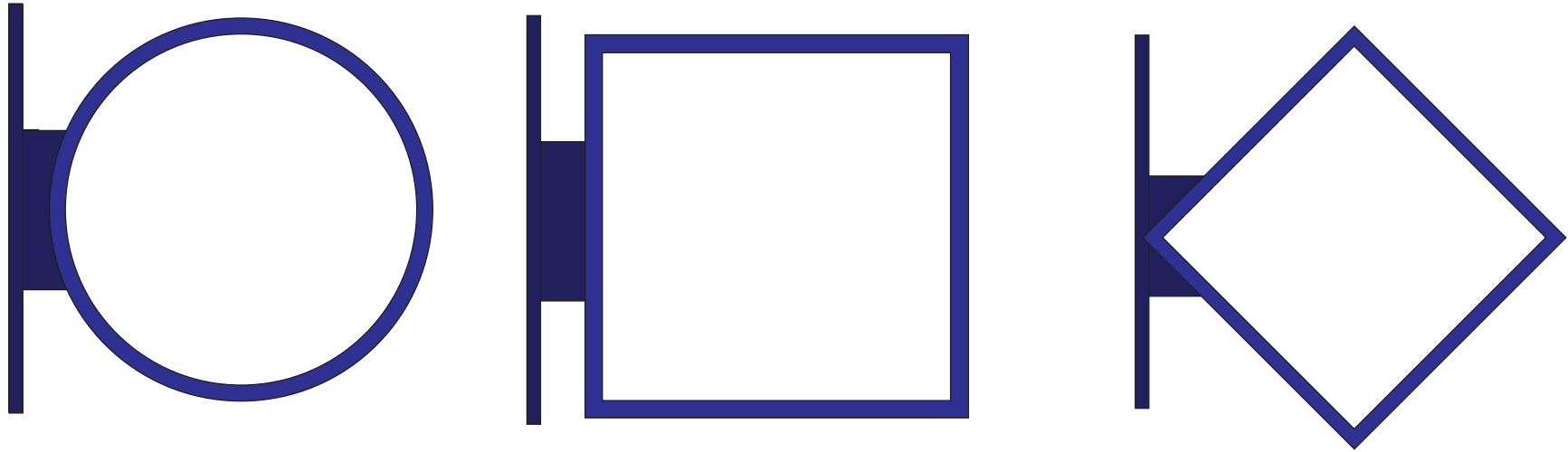
Projecting sign
Internally illuminated

BLDG 6 East Elevation



Sign placement

Typical Tenant Projecting signs Unique Shapes encouraged Up to a 42" projection from the wall surface
Face area based on a 39" width by 39" height or less
Unique color and graphic presentations allowed with landlords approval



Typical Tenant Projecting sign placement to be on the units demising store front center or adjacent to front entrance