

project:  
**delray beach**  
**club entrance**  
2001 s. ocean blvd.  
delray beach, fl.

**dave bodker**  
landscape architecture/planning inc.  
601 n. congress ave., suite 105-a  
delray beach, florida 33445  
561-276-6311

#LA0000999

sheet title:  
**overall**  
**plan**

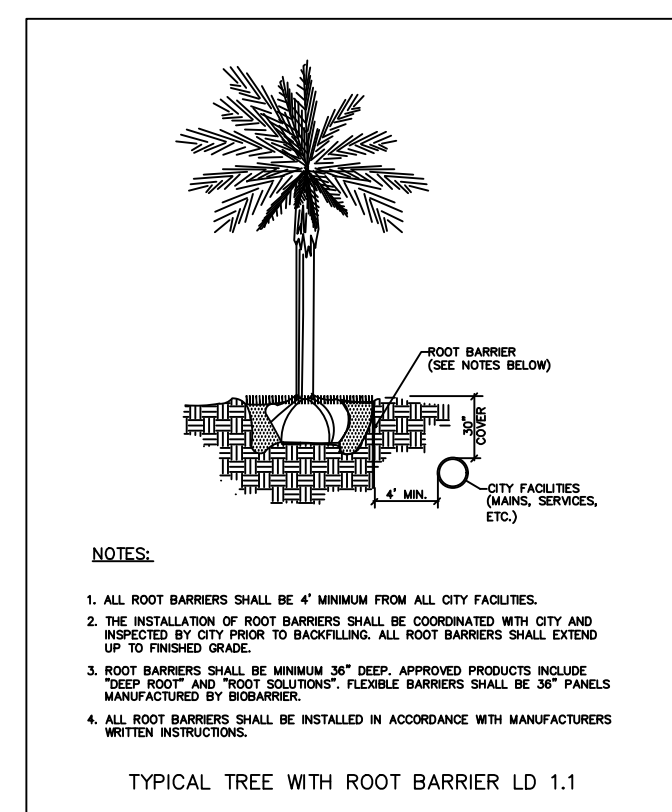
project number:  
10121  
date: 08/02/2021  
scale: 1" = 20'  
drawn by: lmb

revisions:  
Δ12/7/21-extg. sabal palms  
Δ12/10/21-add phase 3  
Δ12/21/21-rev. phase lines, SG  
Δ2/14/22  
Δ5/3/22-comments  
Δ

sheet:

**L-1**

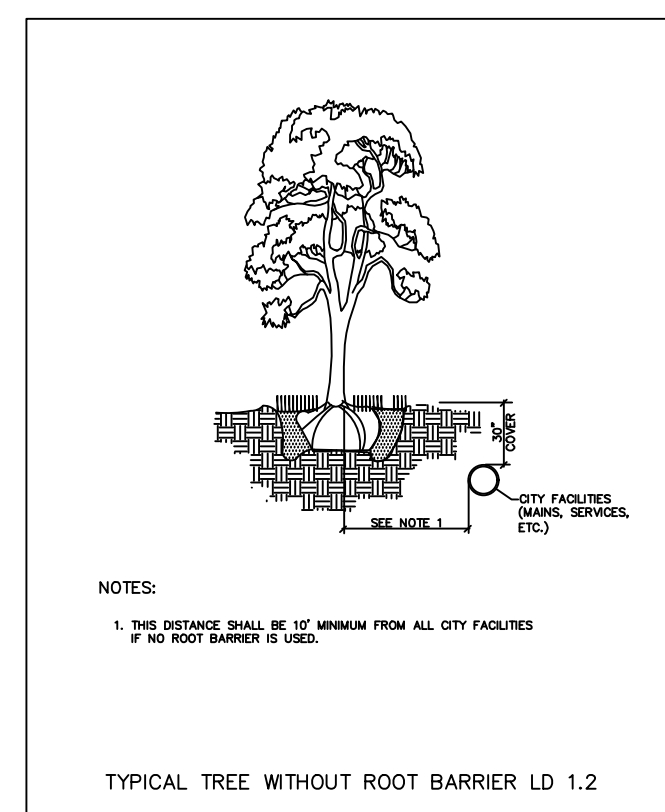
1 of 6 sheets



NOTES:

1. ALL ROOT BARRIERS SHALL BE 4" MINIMUM FROM ALL CITY FACILITIES.
2. THE INSTALLATION OF ROOT BARRIERS SHALL BE COORDINATED WITH CITY AND REFLECTED BY CITY TO BACKFILLING. ALL ROOT BARRIERS SHALL EXTEND UP TO FINISHED GRADE.
3. ROOT BARRIERS SHALL BE MINIMUM 36" DEEP. APPROVED PRODUCTS INCLUDE: "TODD ROOT" AND "TODD SOLUTIONS". FLEXIBLE BARRIERS SHALL BE 36" PANELS MANUFACTURED BY TARRANT.
4. ALL ROOT BARRIERS SHALL BE INSTALLED IN ACCORDANCE WITH MANUFACTURERS' WRITTEN INSTRUCTIONS.

TYPICAL TREE WITH ROOT BARRIER LD 1.1



NOTES:

1. THIS DISTANCE SHALL BE 12" MINIMUM FROM ALL CITY FACILITIES IF NO ROOT BARRIER IS USED.

TYPICAL TREE WITHOUT ROOT BARRIER LD 1.2

## CODE DATA

PHASE 1:  
TOTAL VUA: 9,012 SQ. FT.

INTERIOR LANDSCAPE: 902 SQ. FT. REQUIRED  
1,421 SQ. FT. PROVIDED

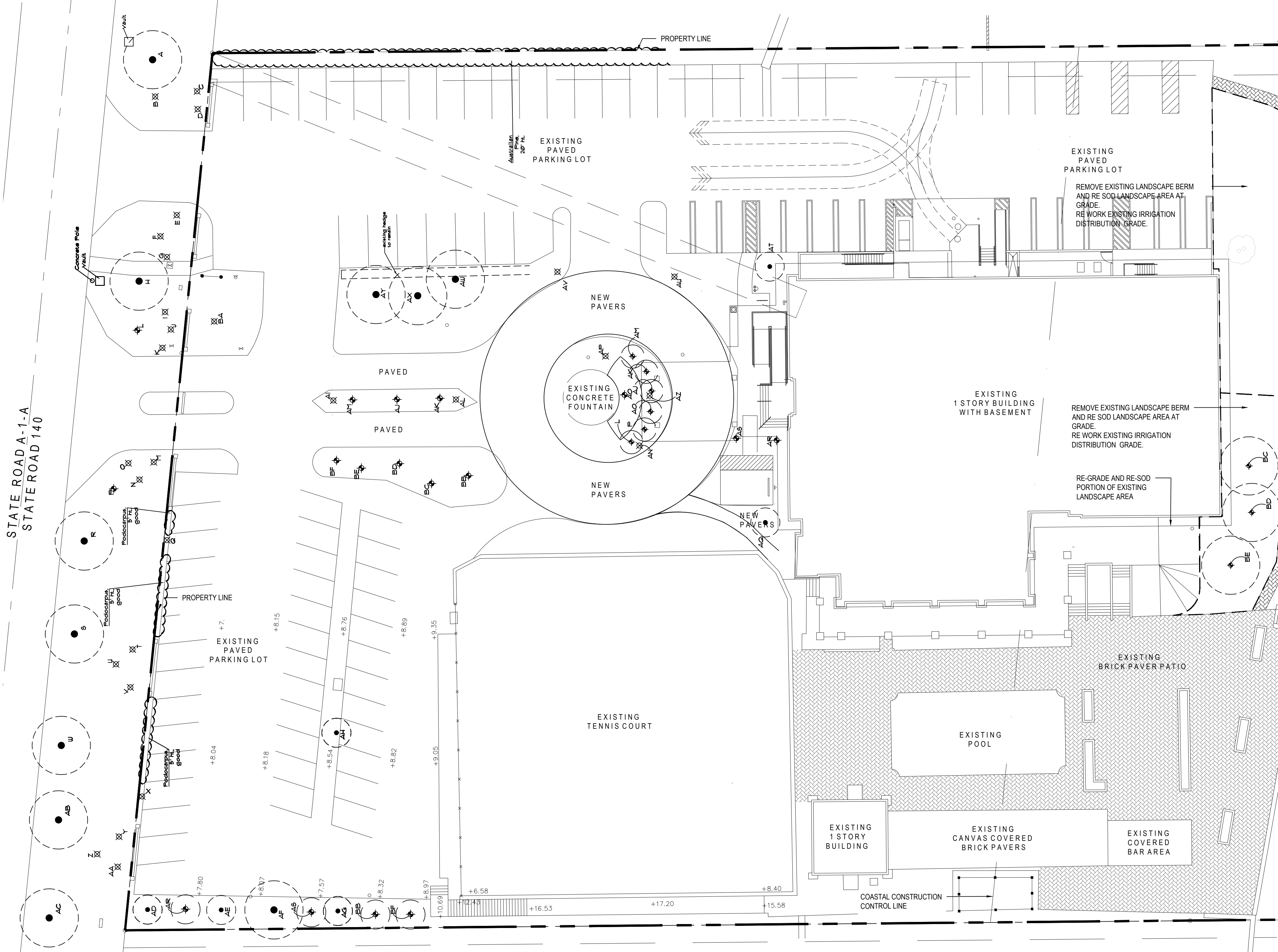
902 SQ. FT. INTERIOR VUA LANDSCAPE REQUIRED / 125 = 8 TREES REQUIRED  
2 PALMS ALLOWED 4 PROVIDED  
6 PARADISE TREES PROVIDED

NOTE: LANDSCAPING AT ALL INTERNAL DRIVE, WALKWAY, INTERSECTION MUST BE MAINTAINED AT 3' OR LESS.





STATE ROAD 1-A  
STATE ROAD 140



## LEGEND

- EXISTING TREES TO BE REMOVED
- EXISTING TREES TO REMAIN
- EXISTING PALMS TO REMAIN
- EXISTING TREES TO BE RELOCATED
- NEW LOCATION OF RELOCATED TREES

### Tree Disposition and Mitigation

Project Address: Delray Beach Club Parcel ID (for multiple IDs, use one for the common area):

Tree #	Common Name	Scientific Name	Height	Spread	DBH	Condition Rating	Comments
A	Coconut Palm	<i>Coccothrinax</i>	45'	20'	32"	65%	Minor trunk damage
H	Coconut Palm	<i>Coccothrinax</i>	45'	20'	30"	65%	Trunk damage
R	Coconut Palm	<i>Coccothrinax</i>	50'	20'	30"	70%	Spiked
S	Coconut Palm	<i>Coccothrinax</i>	50'	20'	30"	65%	Trunk damage
W	Coconut Palm	<i>Coccothrinax</i>	45'	20'	28"	65%	Trunk damage
AB	Coconut Palm	<i>Coccothrinax</i>	50'	20'	30"	65%	Trunk damage
AD	Cabbage Palm	<i>Sabal palmetto</i>	50'	20'	30"	60%	Trunk damage
AE	Cabbage Palm	<i>Sabal palmetto</i>	24'	10'	14"	40%	Trunk damage
AG	Cabbage Palm	<i>Sabal palmetto</i>	20'	8'	11"	40%	Undersized crown, trunk damage
AH	Cabbage Palm	<i>Sabal palmetto</i>	24'	8'	13"	60%	Trunk damage, poor taper, nutritional deficiencies
AJ	Christmas Palm	<i>Adonis merillii</i>	20'	8'	10"	65%	Nutritional deficiencies
AK	Christmas Palm	<i>Adonis merillii</i>	22'	8'	11"	45%	Trunk damage, shaved at base, insects, taper
AL	Coconut Palm	<i>Coccothrinax</i>	45'	20'	25"	65%	double trunk
AM	Coconut Palm	<i>Coccothrinax</i>	45'	20'	25"	65%	single trunk
AN	Coconut Palm	<i>Coccothrinax</i>	45'	20'	25"	65%	Trunk damage
AO	Coconut Palm	<i>Coccothrinax</i>	45'	20'	25"	65%	Minor trunk damage
AP	Coconut Palm	<i>Coccothrinax</i>	30'	20'	15"	70%	Spiked, minor trunk damage

Tree #	Common Name	Scientific Name	Height	Spread	DBH	Condition Rating	Comments
L	Palm	<i>Phoenix roebelenii</i>	10'	6'	7"	65%	triple trunk
P	Palm	<i>Phoenix roebelenii</i>	10'	6'	6"	70%	triple trunk
AJ	Palm	<i>Phoenix roebelenii</i>	4'	2'	2"	70%	triple trunk
AK	Palm	<i>Phoenix roebelenii</i>	5'	2'	3"	70%	triple trunk
AM	Palm	<i>Phoenix roebelenii</i>	5'	2'	3"	70%	triple trunk
AO	Palm	<i>Phoenix roebelenii</i>	8'	6'	6"	70%	(2) four and three trunks side by side
AR	Christmas Palm	<i>Adonis merillii</i>	22'	8'	11"	65%	double trunk
AS	Christmas Palm	<i>Adonis merillii</i>	14'	6'	6"	70%	single trunk
BB	Cabbage Palm	<i>Sabal palmetto</i>	20'	10'	12"	70%	Spiked
BC	Coconut Palm	<i>Coccothrinax</i>	30'	20'	20"	65%	Pencil-like, fewer fronds, spiked
BD	Coconut Palm	<i>Coccothrinax</i>	30'	20'	20"	65%	Spiked
BE	Coconut Palm	<i>Coccothrinax</i>	30'	20'	22"	70%	Spiked
BF	Cabbage Palm	<i>Sabal palmetto</i>	18'	10'	11"	70%	

Tree #	Common Name	Scientific Name	Height	Spread	DBH	Condition Rating	Comments
G	Removal	<i>Calophyllum thymocladum</i>	25'	30'	20"	25%	See Arborist Report

Tree #	Common Name	Scientific Name	Height	Spread	Clear Trunk	Condition Rating	Comments
B	Cabbage Palm	<i>Sabal palmetto</i>	20'	8'	14"	60%	Undersized crown
C	Cabbage Palm	<i>Sabal palmetto</i>	20'	8'	16"	60%	Minor trunk damage
D	Cabbage Palm	<i>Sabal palmetto</i>	18'	7'	14"	10%	Declining, overmatured
E	Cabbage Palm	<i>Sabal palmetto</i>	20'	10'	16"	65%	Insects
F	Cabbage Palm	<i>Sabal palmetto</i>	20'	10'	11"	65%	Insects
G	Cabbage Palm	<i>Sabal palmetto</i>	22'	10'	12"	65%	Minor trunk damage
I	Cabbage Palm	<i>Sabal palmetto</i>	18'	10'	11"	45%	Taper, trunk damage, insects
J	Cabbage Palm	<i>Sabal palmetto</i>	28'	8'	20"	55%	Insects, trunk damage
K	Cabbage Palm	<i>Sabal palmetto</i>	22'	8'	13"	65%	Thin trunk, insects
M	Cabbage Palm	<i>Sabal palmetto</i>	18'	6'	12"	45%	Thin trunk, nutritional deficiencies
N	Cabbage Palm	<i>Sabal palmetto</i>	20'	10'	16"	60%	Nutritional deficiencies, thin trunk with damage
O	Cabbage Palm	<i>Sabal palmetto</i>	20'	10'	16"	60%	Nutritional deficiencies, thin trunk with damage
P	Cabbage Palm	<i>Sabal palmetto</i>	20'	10'	11"	65%	Trunk damage at base > 50% decay
U	Cabbage Palm	<i>Sabal palmetto</i>	24'	10'	16"	70%	Minor trunk damage
V	Cabbage Palm	<i>Sabal palmetto</i>	28'	10'	16"	65%	Trunk damage
X	Arceuthobium	<i>Dryopteris</i>	20'	15'	10"	65%	Salt spray damage
Y	Cabbage Palm	<i>Sabal palmetto</i>	20'	10'	16"	65%	Minor trunk damage
Z	Cabbage Palm	<i>Sabal palmetto</i>	24'	10'	10"	65%	Poor trunk taper
AA	Cabbage Palm	<i>Sabal palmetto</i>	22'	10'	13"	45%	Trunk damage on North side
AB	Cabbage Palm	<i>Sabal palmetto</i>	18'	11"	11"	60%	Minor trunk damage
AL	Cabbage Palm	<i>Sabal palmetto</i>	24'	6'	15"	60%	Undersized crown
AM	Cabbage Palm	<i>Sabal palmetto</i>	24'	6'	16"	60%	Trunk damage, insects
AP	Cabbage Palm	<i>Sabal palmetto</i>	24'	6'	14"	65%	Minor trunk damage
AU	Cabbage Palm	<i>Sabal palmetto</i>	24'	6'	16"	60%	Nutritional deficiencies, minor trunk damage
AV	Cabbage Palm	<i>Sabal palmetto</i>	22'	6'	16"	60%	Insects, nutritional deficiencies
AZ	Cabbage Palm	<i>Sabal palmetto</i>	18'	12"	12"	60%	
BA	Cabbage Palm	<i>Sabal palmetto</i>	20'	10'	16"	65%	

Number of Palms with Condition > 50%: 22 Palms (492 ft.)  
Number of Palms with Condition < 50%: 5 Palms

Mitigation		
Tree Replacement Calculations*		
New Trees	Caliper Provided	Caliper (CAL) Provided
1 Paradise Tree	1 X 3 inch CAL	3 inches

Replacement for Trees with condition rating of > 50%: 0 Trees  
Replacement for Tree-for-Tree basis: 1 Tree

Palm Replacement Calculations **		
New Palms	Overall Height of Palms	Overall Height of Palms
6 Sylvester Date Palms	20' o.a. ht.	120' o.a. ht.
20 Royal Palms	24' o.a. ht.	360' o.a. ht.
3 Coconut Palms	30' o.a. ht.	90' o.a. ht.
		Total: 570' o.a. ht. provided

Replacement for Palms with condition rating of > 50%: 34 Palms  
Replacement for Palm-for-Palm basis: 5 Palms

### Requirements of Vegetation Removal (Sec. 4.6.19 (E)(5))

- \* TREE
- \*\* TREES
- \*\*\* TREES

In Lieu Fee for TREE (Sec. 4.6.19.(E)(5)(d))	
DBH 0 to 8"	\$450
DBH 9" to 12"	\$650
DBH 13" to 18"	\$850
DBH 19" and greater	\$1,000

Example: In-lieu fee for a 21" DBH tree: (\$450 x 8") + (\$600 x 4") + (\$850 x 6") + (\$1,000 x 3") = \$3,600 + \$2,400 + \$5,100 + \$3,000 = \$14,100

For trees with a condition rating of between 25 percent and 50 percent, the in-lieu fee shall be calculated at 50 percent of the above escalating scale.

In-lieu fee for a palm: \$75 per one foot gray trunk or clear trunk

Jeremy T. Chaney  
JTC is a Registered Consulting Arborist (RCA)  
JTC is a Certified Arborist (C.A.) (DNR 2A)  
JTC is a Tree Risk Assessment Qualified (TRAQ) Certified Landscape Inspector  
JTC is a member of the International Society of Arboriculture (ISA)  
JTC is a member of the Florida Arboricultural Society (FAS)



project:  
**delray beach  
club entrance**  
2001 s. ocean blvd.  
delray beach, fl.

dave bodker  
landscape architecture/planning inc.  
601 n. congress ave., suite 105-a  
delray beach, florida 33445  
561-276-6311

#LA0000999  
sheet title:  
**overall existing  
tree plan**

project number:  
10121  
date: 08/02/2021  
scale: 1" = 20'  
drawn by: lmb

revisions:  
Δ 12/7/21-extg. sabal palms  
Δ 12/10/21-add phase 3  
Δ 12/21/21-rev. phase lines, SG  
Δ 2/14/22  
Δ 5/3/22-comments  
Δ 5/25/22-comments

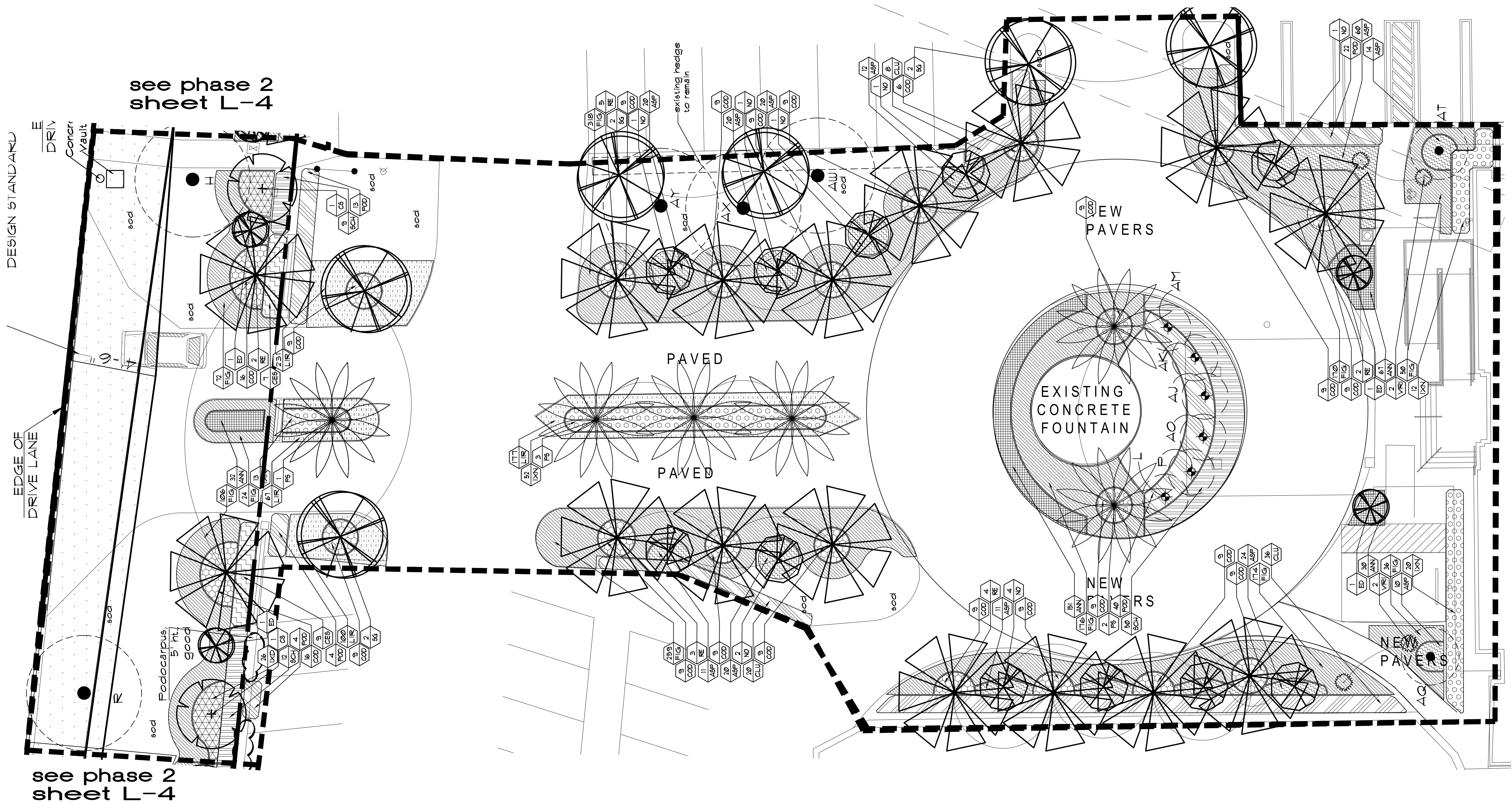
sheet:

L-2



PLANT LIST LEGEND-PHASE 1

SYM	BOTANICAL/COMMON NAME	SPECIFICATIONS	QTY
SOD	Stenotaphrum secundatum St. Augustine Sod	full, fresh sod	as req'd



Plant Schedule

Project Address: Delray Beach Club-PHASE 1				Parcel ID (for multiple IDs, use one for the common area):					
TREES									
Quantity	SYM (Symbol)	Common Name	Scientific Name	Height	Spread	Caliper (CAL)	Condition/Note	Ornamental	Remarks
2	CS	Silver Buttonwood	Conocarpus erectus 'Sericeus'	12'	5'	2"		X	
6	SG	Paradise Tree	Simarouba glauca	10'	6'	3"			8' c.t.
PALMS									
Quantity	SYM	Common Name	Scientific Name	Height	Single/Multi Trunk	Clear Trunk	Condition/Note	Ornamental	Remarks
6	PS	Sylvester Date Palm	Phoenix sylvestris	20' ca.	single	10' c.t.		X	Matched
16	RE	Royal Palm	Roystonea regia	24' ca.	single			X	4' g.w., matched, alternate is Coconut Palm (same spec.)
SHRUBS									
Quantity	SYM	Common Name	Scientific Name	Height	Width	Spacing	Condition/Note	Ornamental	Remarks
4	ED	Japanese Blueberry	Eleocharis decipiens	6'	3'			X	2' cal, 2' c.t., conical
11	NO	Calypso Cleander	Neurum olander 'Calypso'	10'	5'			X	2' cal, standard
23	CES	Silver Buttonwood	Conocarpus erectus 'Sericeus'	24"	24"	24"		X	
64	CLU	Small Leaf Clusia	Clusia flava	4'	30"	30"		X	
97	HN	Nora Giant Isora	Isora coccinea 'Nora Giant'	24"	18"	24"		X	
83	POD	Podocarpus	Podocarpus macrophyllus	4'	24"	24"		X	
4	VRI	Vriesea Imperialis	Imperial Bromeliad	3'	3'			X	
GROUND COVERS									
Quantity	SYM	Common Name	Scientific Name	Height	Width	Spacing	Condition/Note	Ornamental	Remarks
289	ANN	Annals	Annals	4' pos.	12"	12"		X	
222	ASP	Footall Fern	Asparagus densiflorus 'Meyersii'	12"	12"	18"		X	
207	COD	Mammey Croton	Croton variegatum 'Mammey'	18"	18"	24"		X	
1385	FIG	Green Island Ficus	Ficus microcarpa	10"	10"	18"		X	
26	DO	Mau Sunset Isora	Isora coccinea 'Mau Sunset'	18"	18"	18"		X	
375	LR	Evergreen Giant Liriope	Liriope muscari 'Evergreen Giant'	12"	12"	12"		X	
71	SCH	Trinette	Schefflera arboricola 'Trinette'	18"	18"	24"		X	

Sec. 4.6.16 (E) Landscape design standards.

(5) Trees shall be a species having an average mature spread of crown greater than 20 ft and having trunks which can be maintained in a clean condition with over 6 ft of clear mature wood. Trees having an average mature spread of crown less than 20 ft may be substituted by grouping the same so as to create the equivalent of a 20 ft spread of crown. Tree species shall be a minimum of 16 ft in overall height at the time of planting, with a minimum of 6 ft of single straight trunk with 8 ft of clear trunk, and a 7 ft spread of canopy.

Trees for single family homes and duplexes shall be a minimum of 12 ft in overall height at the time of planting, with a minimum of 4 ft of single straight trunk with 6 ft of clear trunk, and a 6 ft spread of canopy.

(6) Palms must have an overall height of a minimum of 16 ft and a minimum of 8 ft of clear trunk at the time of planting. Minimum overall palm height may be increased if palms are of a nature that the fronds hang below an 8 ft clearance, and are further, located in an area where pedestrians may be adversely affected by the fronds. No more than 50 percent of the required trees shall be Palms. Palm species which do not have a mature spread of crown of at least 15 ft shall be grouped in 3, and 3 palms shall equal 1 shade tree. Coconut Palms and Royal Palms may be credited on a one for one basis with shade trees.

Palms used for single family homes and duplexes must have an overall height of a minimum of 12 ft and a minimum of 6 ft of clear trunk at the time of planting.

(7) Shrubs and hedges shall be a minimum of 2 ft in height when measured immediately after planting. Hedges where required shall be planted and maintained so as to form a continuous, unbroken, solid, visual screen within a maximum of one year after planting. To this end, shrubs shall be spaced a maximum of 2 ft OC. Shrubs shall be permitted to be planted up to a maximum of 2.5 ft OC, if shrubs are touching at the time of planting and exceptionally full. Hedges must be allowed to attain height of 36 inch except where providing adequate and safe sight distance requires them to be maintained at a 30 inch height. Hedges that are required for screening purposes shall have their height specified as follows: Hedges shall fully screen equipment that is 5 ft above grade or less. Equipment 5 - 15 ft above grade shall be screened with hedges that are half of the height of the item to be screened. In such instances, the required hedge shall not be any less than 5 ft in height. Anything higher than 15 ft shall be screened with shrubbery that is a minimum of 8 ft in height.

(8) Lawn Grass: For commercial, industrial and multi-family developments, no more than 70 percent of the combination of the required interior greenspace and the required perimeter landscape buffers, shall be planted in lawn grass.

For the development of single family and duplex residences, no more than 80 percent of the previous lot area shall be planted in lawn grass. A minimum of 20 percent of the previous lot area shall be planted in shrubs and ground covers.

Solid sod must be used in swales, canal banks, rights-of-way and other areas subject to erosion.

(4) All plant materials used in conformance with provisions of this ordinance shall conform to the Standards for Florida No. 1, or better as given in "Grades and Standards for Nursery Plants" Part I, 1963 and Part II, State of Florida Department of Agriculture, Tallahassee, or the most current revised edition.

project:  
delray beach  
club entrance  
2001 s. ocean blvd.  
delray beach, fl.

dave bodker  
landscape architecture/planning inc.

601 n. congress ave., suite 105-a  
delray beach, florida 33445  
561-276-6311

#LA0000999

sheet title:

phase 1  
planting plan

project number:

10121

date: 08/02/2021

scale: 1" = 10'

drawn by: lmb

revisions:

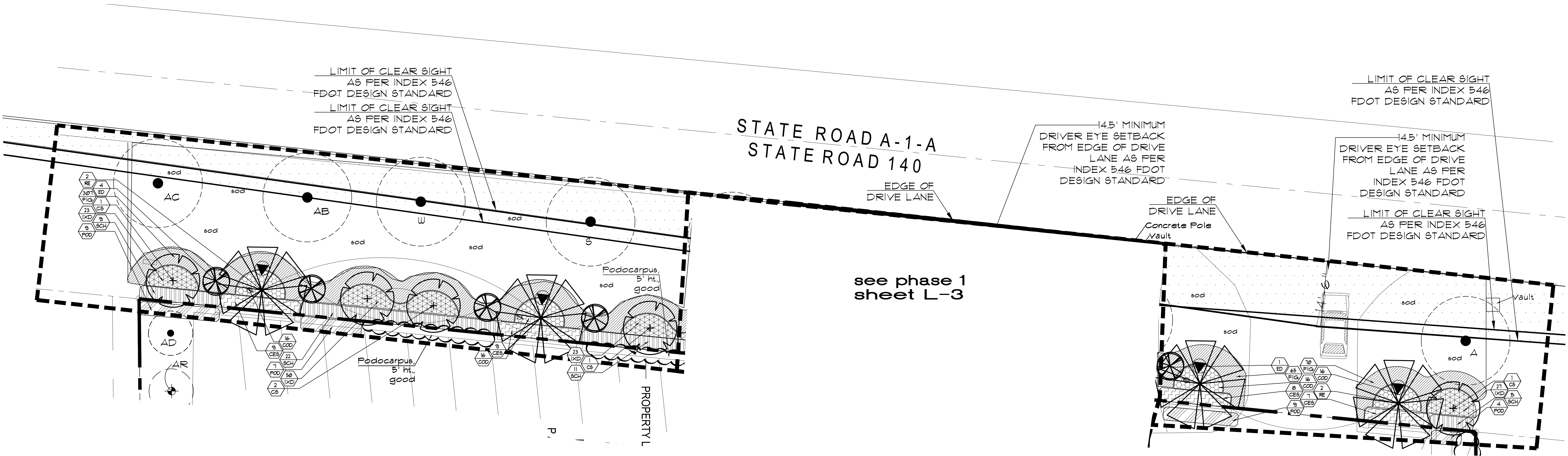
Δ 12/7/21-ext. sabal palms  
Δ 12/10/21-odd phase 3  
Δ 12/21/21-rev. phase lines, SG  
Δ 2/14/22  
Δ 5/3/22-comments  
Δ

sheet:

L-3

3 of 6 sheets





Plant Schedule

Project Address: Delray Beach Club-PHASE 2									
Parcel ID (for multiple IDs, use one for the common area):									
TREES									
Quantity	SYM (Symbol)	Common Name	Scientific Name	Height	Spread	Caliper (CAL)	Condition/Note	Ornamental	Remarks
5	CS	Silver Buttonwood	Conocarpus erectus 'Sericeus'	12'	5'	2"		X	
PALMS									
Quantity	SYM	Common Name	Scientific Name	Height	Single/Multi Trunk	Clear Trunk	Condition/Note		Remarks
4	RE	Royal Palm	Roystonea regia	24' oa.	single			X	4' g.w., matched, alternate is Coconut Palm (same spec.)
SHRUBS									
Quantity	SYM	Common Name	Scientific Name	Height	Width	Spacing	Condition/Note		Remarks
5	ED	Japanese Blueberry	Elaeocarpus decipiens	6'	3'			X	2" cal, 2' c.t., conical
33	CS	Silver Buttonwood	Conocarpus erectus 'Sericeus'	24"	24"	24"		X	
29	POD	Podocarpus	Podocarpus macrophyllus	4"	24"	24"		X	
GROUND COVERS									
Quantity	SYM	Common Name	Scientific Name	Height	Width	Spacing	Condition/Note		Remarks
64	COO	Mammey Croton	Codiaeum variegatum 'Mammey'	18"	18"	24"		X	
442	FIG	Green Island Ficus	Ficus microcarpa	10"	10"	18"		X	
123	MO	Masi Sunset Inara	Inra coccinea 'Masi Sunset'	18"	18"	18"		X	
47	SCH	Trinette	Schefflera arboricola 'Trinette'	18"	18"	24"		X	

See 4.6.16 (F)landscape design standards.

(5) Trees shall be a species having an average mature spread of crown greater than 20 ft and having trunks which can be maintained in a clean condition with over 6 ft of clear mature wood. Trees having an average mature spread of crown less than 20 ft may be substituted by grouping the same so as to create the equivalent of a 20 ft spread of crown. Tree species shall be a minimum of 16 ft in overall height at the time of planting, with a minimum of 6 ft of single straight trunk with 8 ft of clear trunk, and a 7 ft spread of canopy.

Trees for single family homes and duplexes shall be a minimum of 12 ft in overall height at the time of planting, with a minimum of 4 ft of single straight trunk with 6 ft of clear trunk, and a 6 ft spread of canopy.

(6) Palms must have an overall height of a minimum of 16 ft and a minimum of 8 ft of clear trunk at the time of planting. Minimum overall palm height may be increased if palms are of a nature that the fronds hang below an 8 ft clearance, and are further, located in an area where pedestrians may be adversely affected by the fronds. No more than 50 percent of the required trees shall be Palms. Palm species which do not have a mature spread of crown of at least 15 ft shall be grouped in 3, and 3 palms shall equal 1 shade tree. Coconut Palms and Royal Palms may be credited on a one for one basis with shade trees.

Palms used for single family homes and duplexes must have an overall height of a minimum of 12 ft and a minimum of 6 ft of clear trunk at the time of planting.

(7) Shrubs and hedges shall be a minimum of 2 ft in height when measured immediately after planting. Hedges where required shall be planted and maintained so as to form a continuous, unbroken, solid, visual screen within a maximum of one year after planting. To this end, shrubs shall be spaced a maximum of 2 ft OC. Shrubs shall be permitted to be planted up to a maximum of 2.5 ft OC, if branches are touching at the time of planting and exceptionally full. Hedges must be allowed to attain height of 36-inch except where providing adequate and safe sight distance requires them to be maintained at a 30-inch height. Hedges that are required for screening purposes shall have their height specified as follows: Hedges shall fully screen equipment that is 5 ft above grade or less. Equipment 5 ~ 16 ft above grade shall be screened with hedges that are half of the height of the item to be screened. In such instances, the required hedge shall not be any less than 5 ft in height. Anything higher than 16 ft shall be screened with alnaberry that is a minimum of 8 ft in height.

(8) Lawn Grass: For commercial, industrial and multi-family developments, no more than 70 percent of the combination of the required interior greenspace and the required perimeter landscape buffers, shall be planted in lawn grass.

For the development of single family and duplex residences, no more than 80 percent of the previous lot area shall be planted in lawn grass. A minimum of 20 percent of the previous lot area shall be planted in shrubs and ground covers.

Solid sod must be used in swales, canal banks, rights-of-way and other areas subject to erosion.

(4) All plant materials used in conformance with provisions of this ordinance shall conform to the Standards for Florida No. 1 or better as given in "Grades and Standards for Nursery Plants" Part I, 1963 and Part II, State of Florida Department of Agriculture, Tallahassee, or the most current revised edition.

PLANT LIST LEGEND-PHASE 2

SYM	BOTANICAL/COMMON NAME	SPECIFICATIONS	QTY
SOD	Stenotaphrum secundatum St. Augustine Sod	full, fresh sod	as req'd

project:  
**delray beach  
club entrance**  
2001 s. ocean blvd.  
delray beach, fl.

**dave bodker**  
**landscape architecture/planning inc.**  
601 n. congress ave., suite 105-a  
delray beach, florida 33445  
561-276-6311

#A0000999  
sheet title:  
**phase 2  
planting plan**

project number:  
10121  
date: 08/02/2021  
scale: 1" = 10'  
drawn by: lmb

revisions:  
Δ12/7/21-extg. sabal palms  
Δ12/10/21-add phase 3  
Δ12/21/21-rev. phase lines, SG  
Δ2/14/22  
Δ5/3/22-comments  
Δ

sheet:

**L-4**



[illegible]

(5) Trees shall be a species having an average mature spread of crown greater than 20 ft and having trunks which can be maintained in a clean condition with over 6 ft of clear mature wood. Trees having an average mature spread of crown less than 20 ft may be substituted by grouping the same so as to create the equivalent of a 20 ft spread of crown. Tree species shall be a minimum of 16 ft in overall height at the time of planting, with a minimum of 6 ft of single straight trunk with 8ft of clear trunk, and a 7 ft spread of canopy.

Trees for single family homes and duplexes shall be a minimum of 12 ft in overall height at the time of planting, with a minimum of 4 ft of single straight trunk with 6 ft of clear trunk, and a 6 ft spread of canopy.

(6) Palms must have an overall height of a minimum of 16 ft and a minimum of 8 ft of clear trunk at the time of planting. Minimum overall palm height may be increased if palms are of a nature that the fronds hang below an 8 ft clearance, and are further, located in an area where pedestrians may be adversely affected by the fronds. No more than 50 percent of the required trees shall be Palms. Palm species which do not have a mature spread of crown of at least 15 ft shall be grouped in 3, and 3 palms shall equal 1 shade tree. Coconut Palms and Royal Palms may be credited on a one for one basis with shade trees.

Palms used for single family homes and duplexes must have an overall height of a minimum of 12 ft and a minimum of 6 ft of clear trunk at the time of planting.

(7) Shrubs and hedges shall be a minimum of 2 ft in height when permitted immediately after planting. Hedges where branches shall be planted and maintained so as to form a continuous, unbroken, solid, visual screen within a maximum of one year after planting. To this end, shrubs shall be spaced a maximum of 2 ft OC. Shrubs shall be permitted to be planted up to a maximum of 2.5 ft OC, if branches are touching at the time of planting and exceptionally full. Hedges must be allowed to attain height of 36-inch except where providing adequate and safe sight distance requires them to be maintained at a 30-inch height. Hedges that are required for screening purposes shall have their height specified as follows: Hedges shall full screen equipment that is 5 ft above grade or less. Equipment 5 - 16 ft above grade shall be screened with hedges that are half of the height of the item to be screened. In such instances, the required hedge shall not be any less than 5 ft in height. Anything higher than 16 ft shall be screened with shrubbery that is a minimum of 8 ft in height.

(8) Lawn Grass: For commercial, industrial and multi-family developments, no more than 70 percent of the combination of the required interior greenspace and the required perimeter landscape buffers, shall be planted in lawn grass.

For the development of single family and duplex residences, no more than 80 percent of the pervious lot area shall be planted in lawn grass. A minimum of 20 percent of the pervious lot area shall be planted in shrubs and ground covers.

Solid sod must be used in swales, canal banks, rights-of-way and other areas subject to erosion

(4) All plant materials used in conformance with provisions of this ordinance shall conform to the Standards for Florida No. 1 or better as given in "Grades and Standards for Nursery Plants" Part I, 1963 and Part II, State of Florida Department of Agriculture, Tallahassee, or the most current revised edition.

**dave bodker**  
**landscape architecture/planning inc.**  
 101 n. congress ave., suite 105-a  
 delray beach, florida 33445  
 561-276-6311

#LA0000999

sheet title:

## phase 3

### planting plan

project number:	10121
date:	08/02/2021
scale:	1" = 10'
drawn by:	lmb

revisions:  
 12/7/21-extg. sabal palms  
 12/10/21-add phase 3  
 12/21/21-rev. phase lines, SG  
 2/14/22  
 5/3/22-comments

sheet:

L-5

5 of 6 sheets





[illegible]

sheet

**L-6**