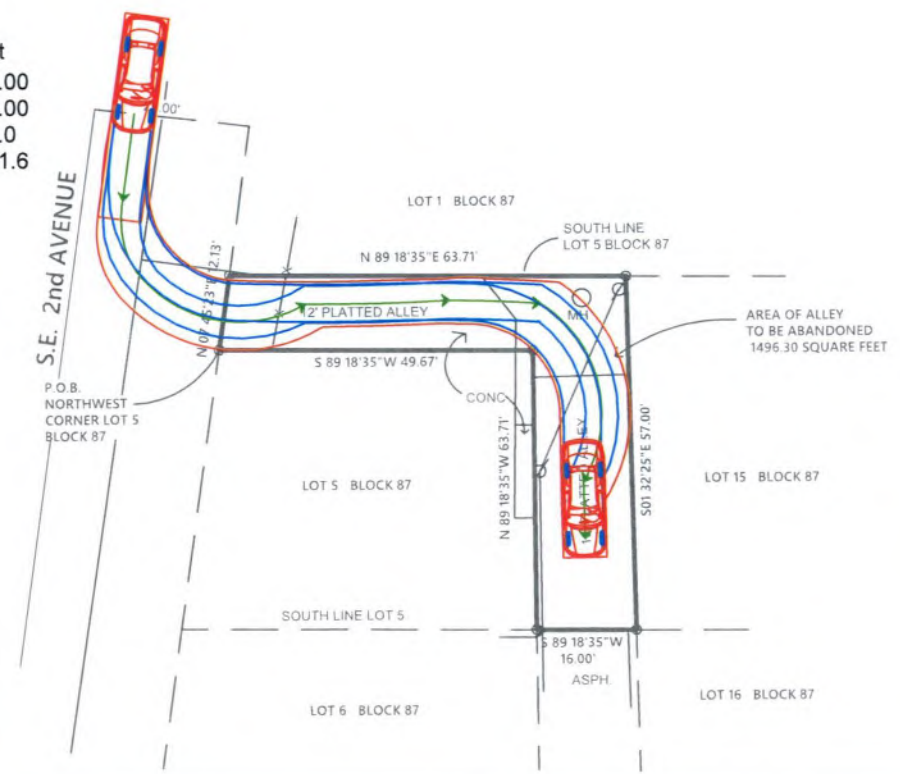
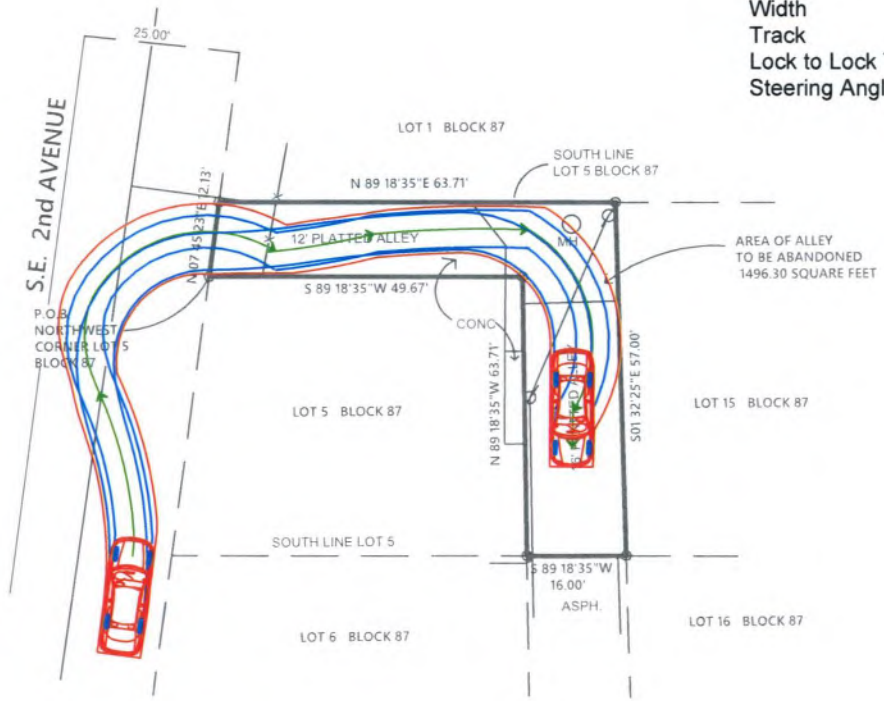


RECEIVED BY
 SEP 22 2021
 City of Deiray Beach
 Development Services Dept.
 Planning & Zoning Div.

P
 Width : 7.00 feet
 Track : 6.00 feet
 Lock to Lock Time : 6.0
 Steering Angle : 31.6

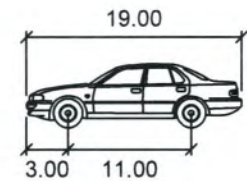
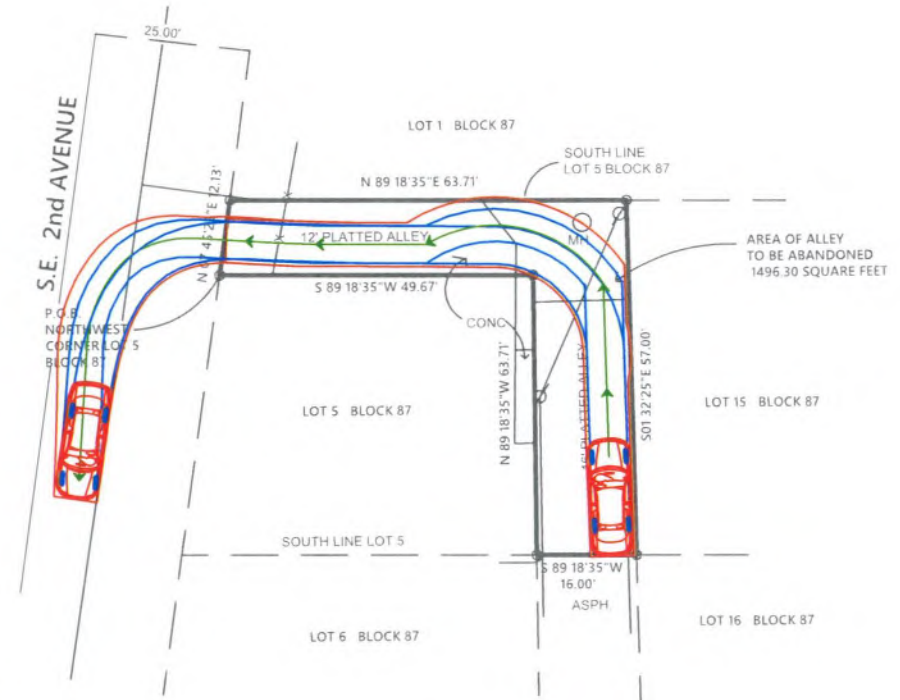
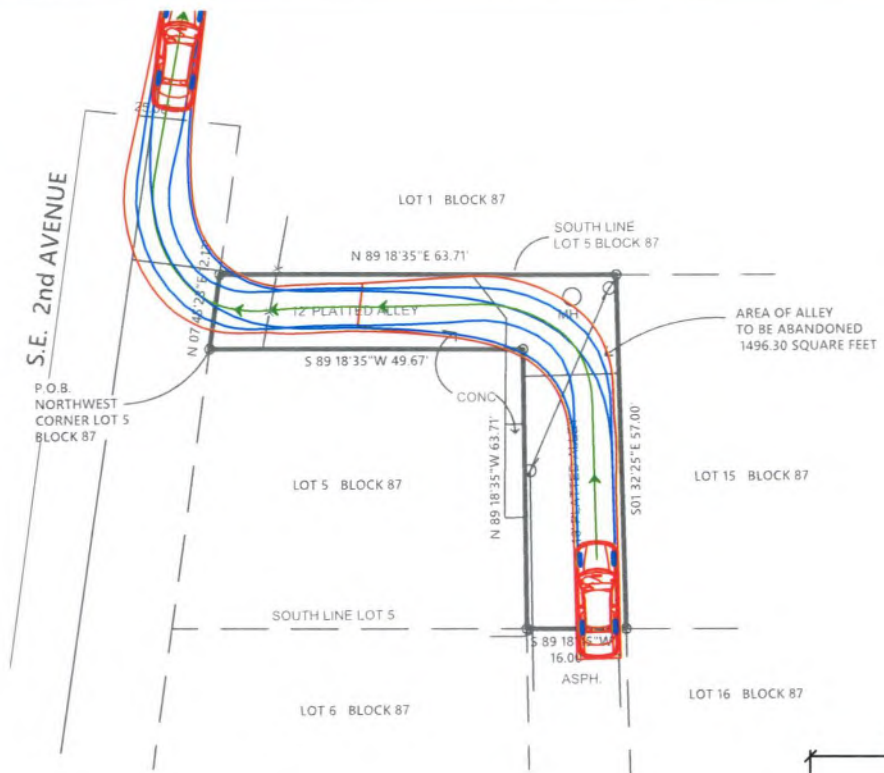


BRYAN G. KELLEY
 LICENSE
 No. 74005
 SEP 22 2021
 STATE OF
 FLORIDA
 PROFESSIONAL ENGINEER



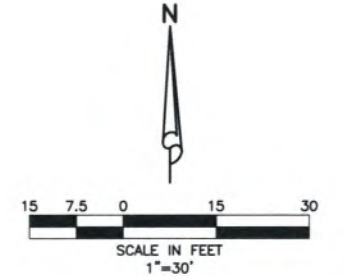
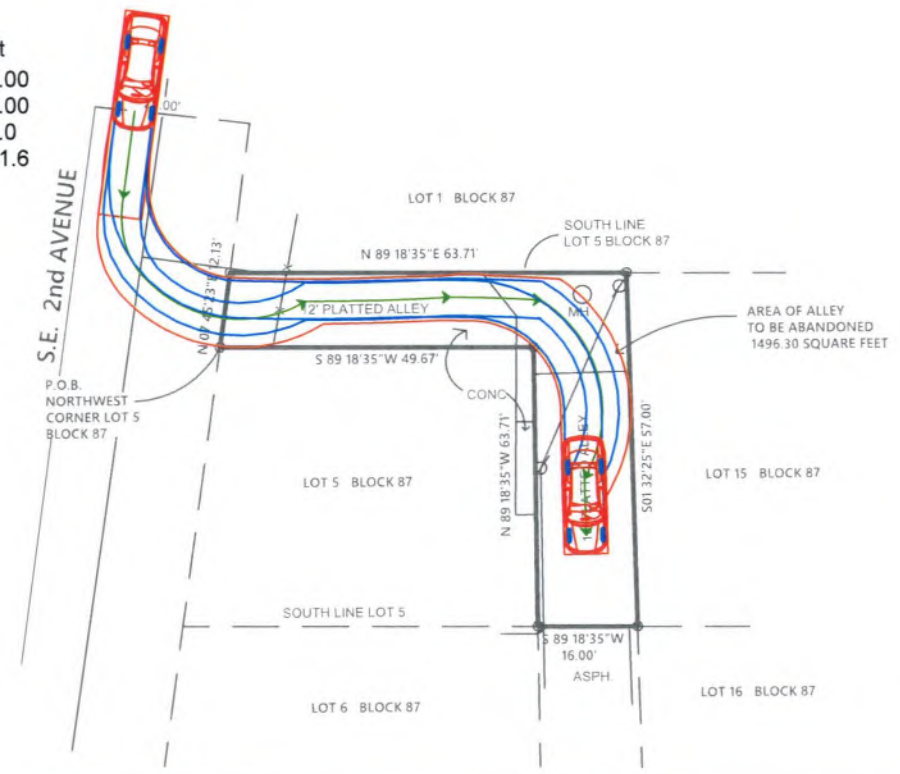
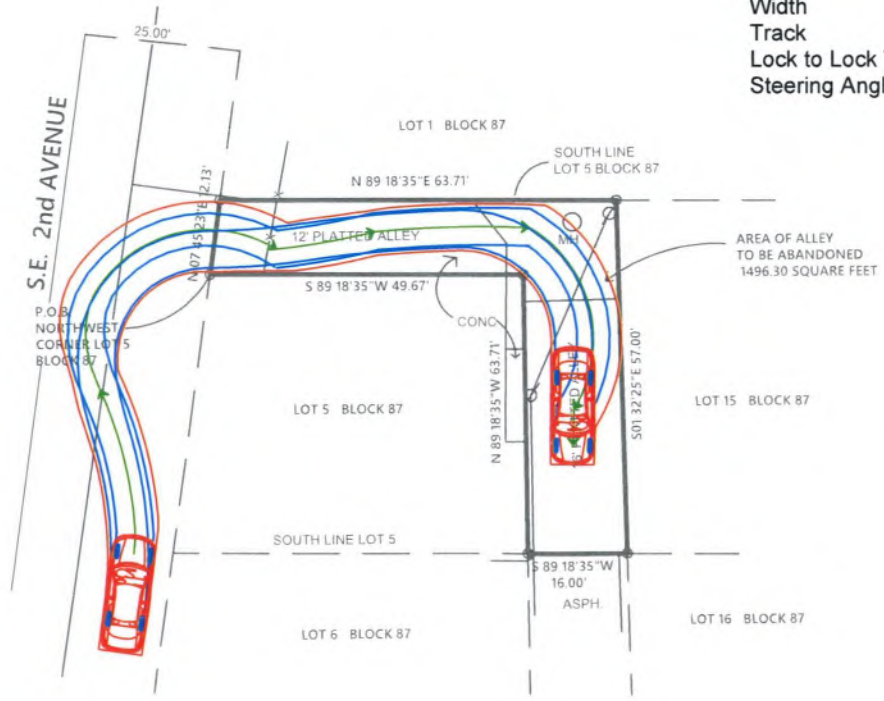
ALLEYWAY
 PASSENGER CAR AUTOTURN

DESIGN	DRAWN	CHECKED	APPROVED	DATE	JOB NO.	DRAWING NO.	SHEET OF
K.D.	R.W.				21-002	21002AT01	1 OF 2



P

	feet
Width	: 7.00
Track	: 6.00
Lock to Lock Time	: 6.0
Steering Angle	: 31.6



RECEIVED BY
 SEP 22 2021
 City of Deiray Beach
 Development Services Dept.
 Planning & Zoning Div.



 ENGINEERING PLANNING CONSULTING SINCE 1922 2581 Metropole Blvd. Suite 3 • West Palm Beach, Florida 33407 • (561) 478-7846					ALLEYWAY PASSENGER CAR AUTOTURN		
							DESIGN
REVISIONS					JOB NO.	DRAWING NO.	SHEET OF
					21-002	21002AT01	1 2