

This is not a certified copy

KNOW ALL MEN BY THESE PRESENTS that Lina S Bossert has caused to be surveyed and plotted this map of the subdivision of Block 32 of DELRAY Part of Sec 17 T 46 S R 43 E Palm Beach County Florida And that she does hereby dedicate the perpetual use of the alleys, the roads and highways shown thereon, reserving to herself, her successors or assigns, the reversion or reversions thereof whenever discontinued by law.

In Witness whereof The said Lina S Bossert has signed these presents signed sealed and delivered
 Lina S Bossert
 in presence of:
 Geo. A. Long
 Harry H. Hest

STATE OF FLORIDA
 County of Palm Beach
 On this 30th day of May 1917. Personally appeared before me Lina S. Bossert who acknowledged this to be her signature, signed for the purposes aforesaid written ~~and~~



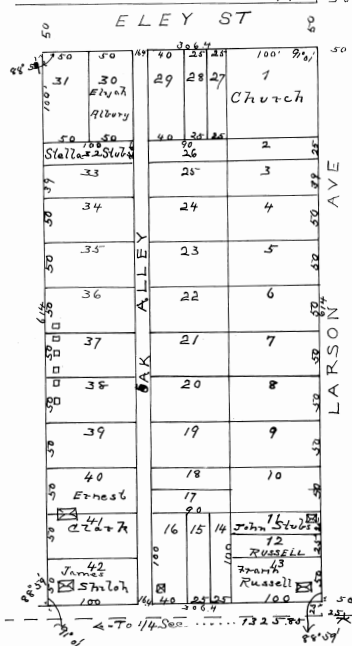
STATE OF FLORIDA
 County of Palm Beach
 I hereby certify, that the measurements of lots and Roads shown on this Map, conform to actual measurements taken on this tract by me, and that they are correct and true, to the best of my knowledge and belief.

Geo. A. Long
 sworn to before me, this 30th Day of May 1917. ~~ENSAULT~~



BLOCK 32, DELRAY
 PALM BEACH CO. FLA.
 Part of Sec 17, T 46, R 43 E.

SCALE 50' = 1" INCH.
 Geo. A. Long, May 1917



James I. Long
 97
 1917