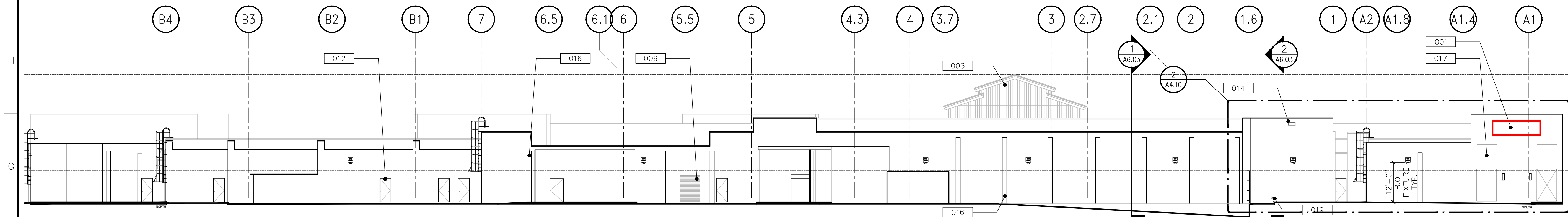


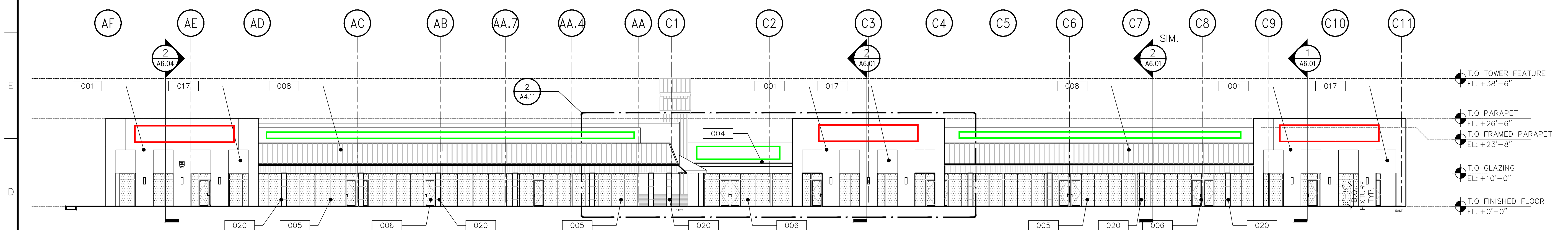
4 PROPOSED EXTERIOR ELEVATION – WEST

A3.00 SCALE: 1/16" = 1'-0"



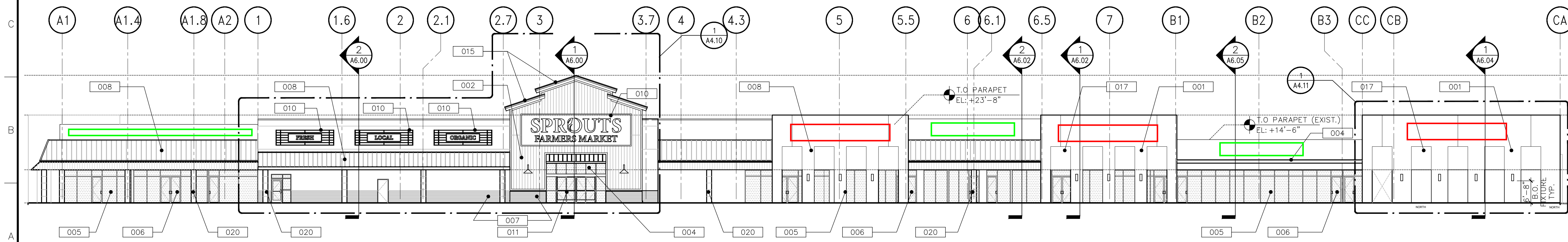
3 PROPOSED EXTERIOR ELEVATION – SOUTH

A3.00 SCALE: 1/16" = 1'-0"



2 PROPOSED EXTERIOR ELEVATION – EAST

A3.00 SCALE: 1/16" = 1'-0"



1 PROPOSED EXTERIOR ELEVATION – NORTH

A3.00 SCALE: 1/16" = 1'-0"

LEGEND

- 001 TEXTURE STUCCO FINISH
- 002 CORRUGATED METAL PANEL SYSTEM (NOA 20-0128.03)
- 003 STUCCO REVEAL
- 004 PREFABRICATED METAL ENTRANCE CANOPY
- 005 IMPACT RESISTANT GLASS IN ALUMINUM STORE-FRONT SYSTEM
- 006 IMPACT RESISTANT GLASS DOOR ON ALUMINUM STORE-FRONT SYSTEM
- 007 SCORED STUCCO FINISH (BASE)
- 008 STANDING SEAM METAL ROOF
- 009 OVERHEAD LOADING DOOR
- 010 DECORATIVE GRILLAGE / BUILDING SIGNAGE (BY OTHERS)
- 011 IMPACT RESISTANT GLASS SLIDING DOOR
- 012 EXISTING MAN DOOR
- 013 PREFINISHED ALUMINUM RAINWATER DOWNSPOUT
- 014 OVERFLOW WALL SCUPPER
- 015 STANDING SEAM METAL ROOF DORMER ELEMENT
- 016 EXISTING CMU PILASTER
- 017 2" WALL RECESS
- 018 STUCCO COLUMN BUILD-OUT
- 019 RAINWATER LEADER DRAIN (ZURN)
- 020 WOOD COMPOSITE WALL PANEL SYSTEM

GENERAL NOTES

- G.C. TO REVIEW COLORED ELEVATIONS BY THE ARCHITECT FOR VERIFICATION OF PAINT COLOR AND LOCATION. G.C. TO PAINT SWATCHES ON PORTION OF THE WALL FOR OWNER AND ARCHITECTS TO APPROVE PRIOR TO COMMENCEMENT OF PAINTING
- ACCENT COLORS TO HAVE TWO COATS OF COMMERCIAL QUALITY GRADE LATEX PAINT. MISCELLANEOUS METALS TO HAVE THREE COATS OF COMMERCIAL QUALITY GRADE ENAMEL PAINT.
- RETURN ALL HORIZONTAL REVEALS AND RECESSES AT ENDS OF WALL
- SUBMIT ALL COLOR SAMPLES TO ARCHITECT FOR APPROVAL PRIOR TO PROCUREMENT AND INSTALLATION
- PROVIDE MIN. 3'x3' PAINT SAMPLES ON SITE FOR ARCHITECT'S APPROVAL

COLOR SCHEME

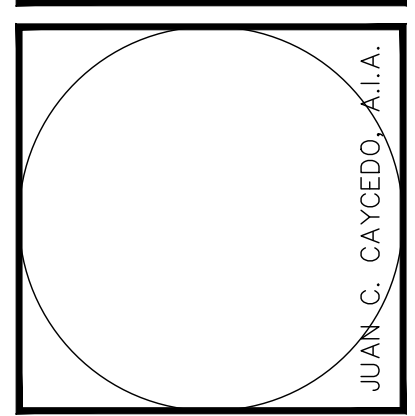
- PT-1 SHERWIN WILLIAMS (TO BE DETERMINED)
- PT-2 SHERWIN WILLIAMS (TO BE DETERMINED)
- PT-3 SHERWIN WILLIAMS (TO BE DETERMINED)

- T.O. TOWER ELEMENT EL: +38'-6"
- T.O. PARAPET EL: +26'-6"
- T.O. EXISTING PARAPET EL: +19'-6"
- T.O. GLAZING EL: +10'-0"
- T.O. FINISHED FLOOR EL: +0'-0"

DESIGN DEVELOPMENT 07.12.2021

RLC Architects
14500 S. Dixie Hwy., Suite 100, Fort Lauderdale, FL 33309
Tel: 954.393.6555 Fax: 954.393.0007
www.rlcarchitects.com

COPYRIGHT RLC ARCHITECTS, P.A., 2021
ALL RIGHTS RESERVED. NO PART OF THESE DRAWINGS OR ANY INFORMATION CONTAINED HEREIN IS TO BE REPRODUCED OR TRANSMITTED IN ANY FORM OR BY ANY MEANS, ELECTRONIC OR MECHANICAL, WITHOUT THE WRITTEN PERMISSION OF RLC ARCHITECTS, P.A.



DELRAY COMMONS RETAIL
EXTERIOR SHELL & SITE RENOVATION
PEBB ENTERPRISES
5024 WEST ATLANTIC AVENUE
DELRAY BEACH, FLORIDA

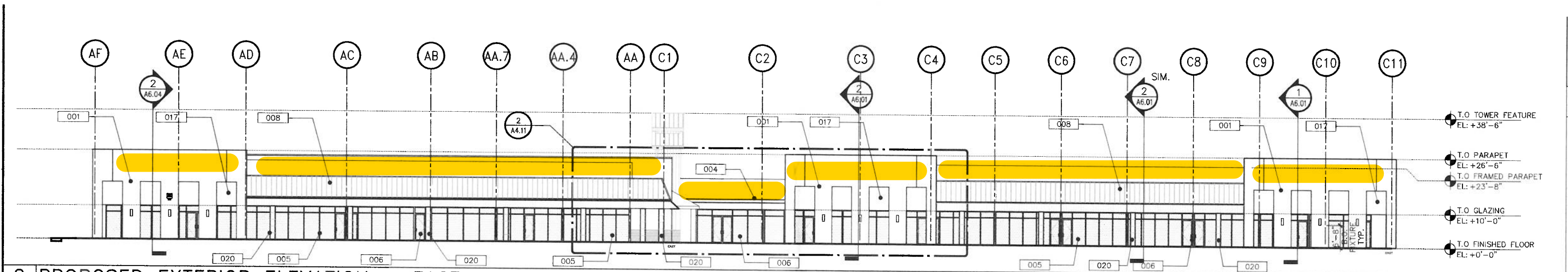
REVISIONS

Drawing Title
PROPOSED EXTERIOR ELEVATIONS

Scale
Project No. 20121.01
Date 07.12.2021

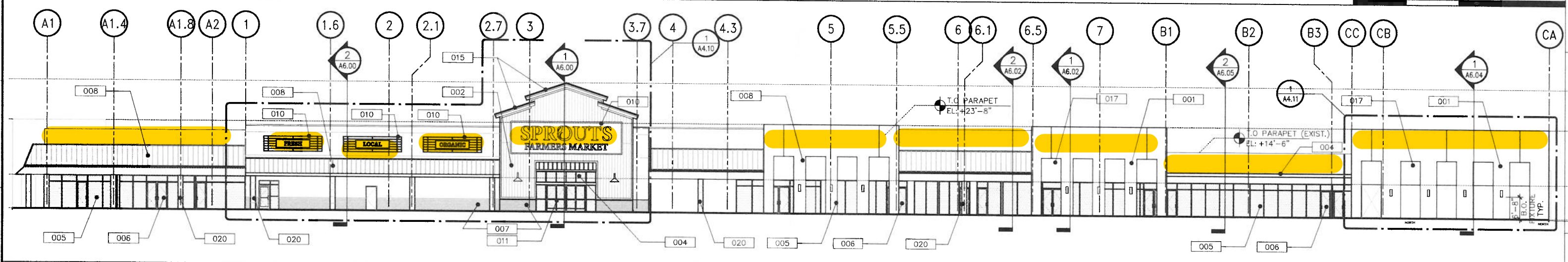
Principal: JCO
Project Director: MB
Project Manager: BE
Drafted by: BE
Checked by: ---

Sheet No.
A3.00



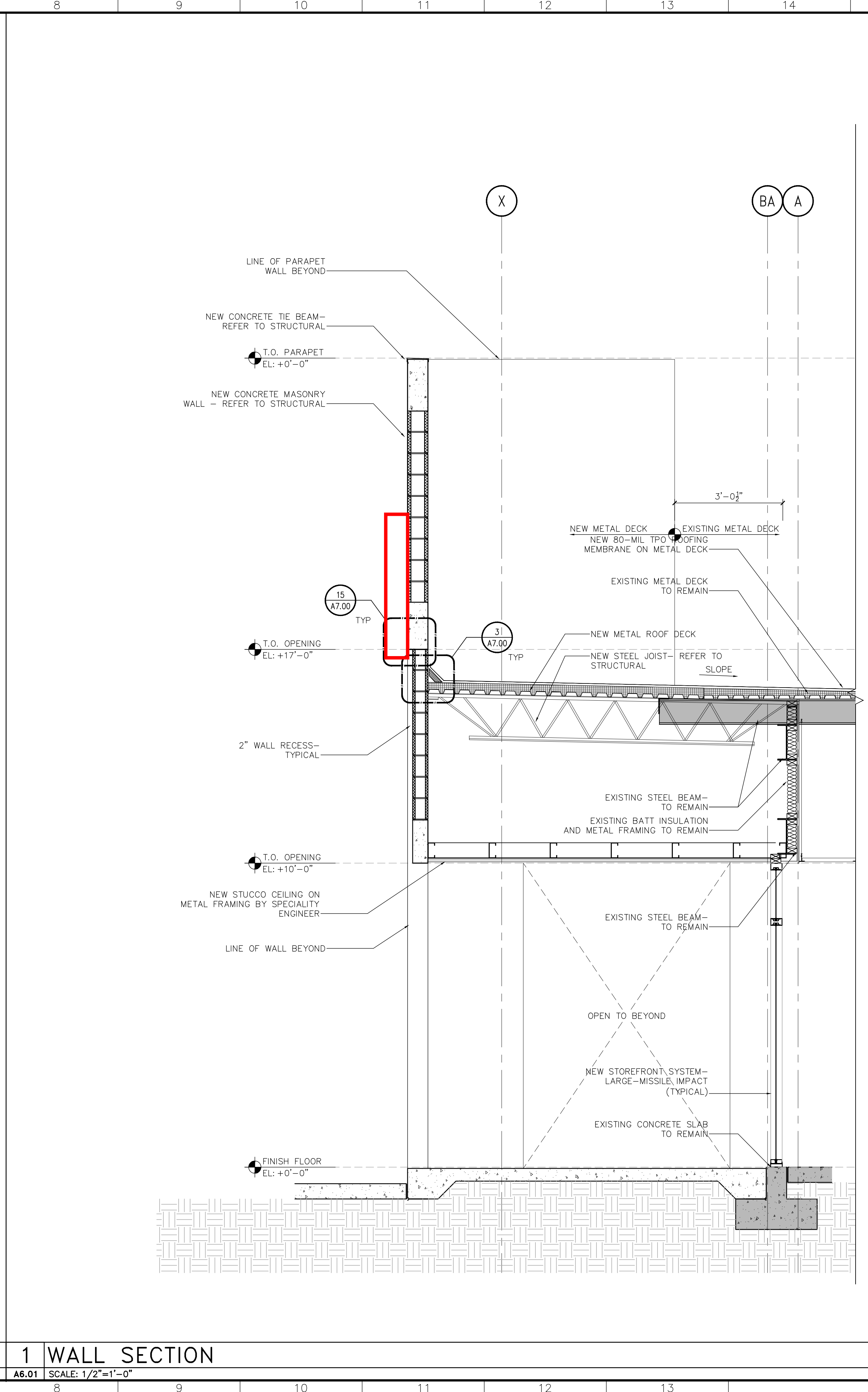
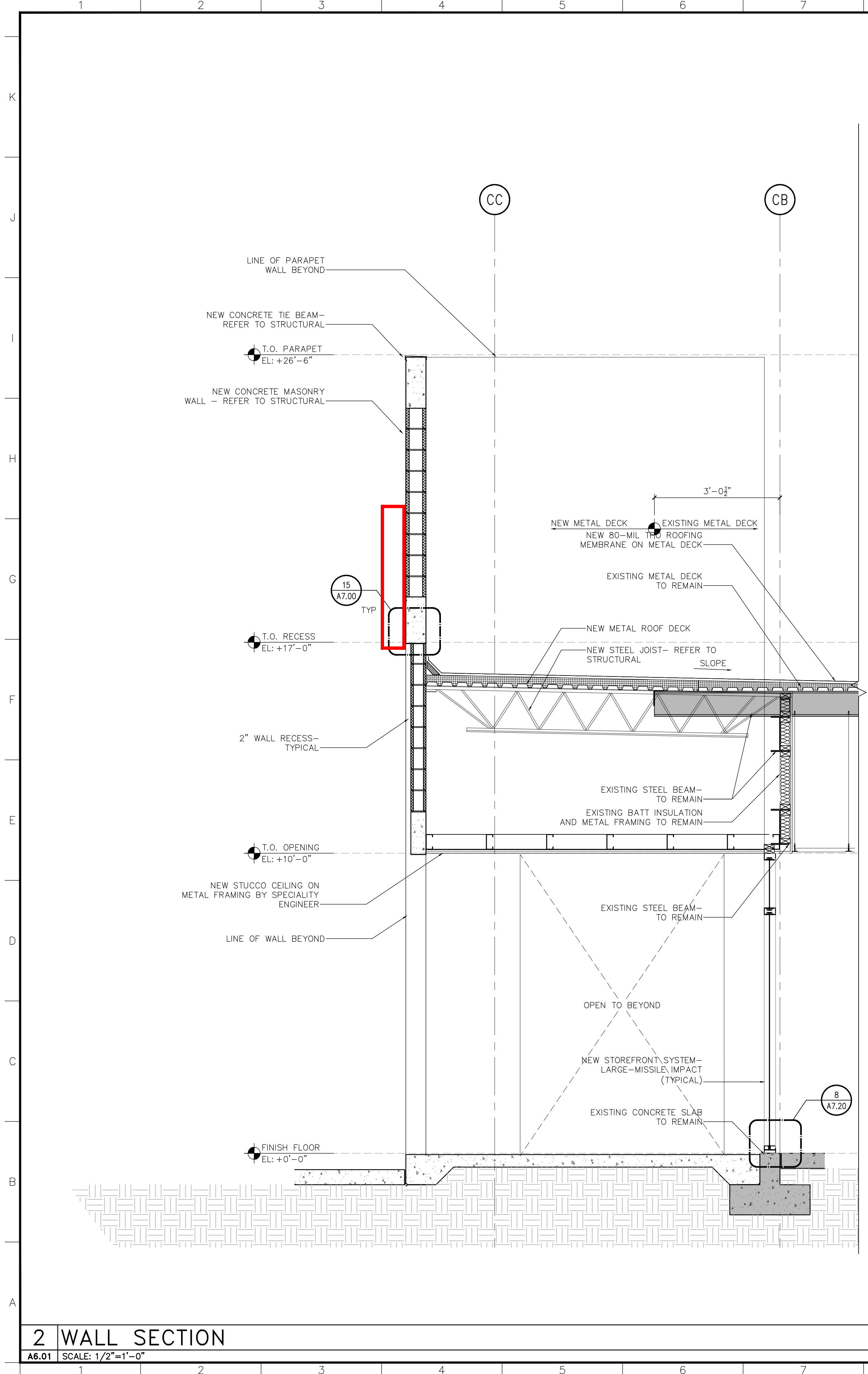
2 PROPOSED EXTERIOR ELEVATION – EAST

A3.00 SCALE: 1/16" = 1'-0"



1 PROPOSED EXTERIOR ELEVATION – NORTH

A3.00 SCALE: 1/16" = 1'-0"



GENERAL WALL SECTION NOTES:

1. ELEVATION TARGET SYMBOLS ARE TO TOP OF SLAB, AND OTHER ELEMENTS AS INDICATED.

2. REFER TO STRUCTURAL DRAWINGS FOR INFORMATION RELATED TO FOUNDATION, BUILDING STRUCTURE, AND LAYOUT OF SUCH.

3. REFER TO GRAPHIC SYMBOLS LEGEND FOR TYPICAL AND CONVENTIONAL MATERIAL DELINEATION. THESE MATERIALS MAY NOT BE NOTED.

4. EXCEPT FOR SPECIAL CONDITIONS THAT VARY FROM THE TYPICAL, REFER TO THE MANUFACTURER SPECIFICATIONS FOR INFORMATION RELATED TO MATERIAL ATTACHMENTS, ANCHORAGE, REFERENCE STANDARDS, AND OTHER RELEVANT INSTALLATION INFORMATION.

5. REFER TO THE EXTERIOR ELEVATIONS AND FLOOR PLANS FOR LOUVER, DOOR, AND WINDOW SYMBOLS, AND THE REFERENCED MATERIAL INFORMATION.

6. REFER TO PARTITION TYPE SCHEDULE FOR INTERIOR PARTITION CONSTRUCTION AND RELATED NOTES.

FLASHING / WATERPROOFING NOTES:

MEMBRANE WATERPROOFING SHALL BE PROVIDED AT THE FOLLOWING LOCATIONS:

1. CONTROL JOINTS IN CMU OR CONCRETE BACKUP

2. JOINTS WHERE CMU OR CONCRETE BACKUP ABUTTS A DISSIMILAR MATERIAL

3. STEEL ELEMENTS EXPOSED IN WALL CAVITIES

4. WINDOW JAMBS (RE: GENERAL WINDOW NOTES)

5. METAL PANEL COLUMN ENCLOSURES

6. OTHER LOCATIONS AS INDICATED ON DWGS.

7. MEMBRANE TO LAP OVER VENEER / CLADDING SUBSTRATE MIN. 12"

RLCArchitects

14501 N. Shoreline Blvd. Suite 100, Boca Raton, FL 33432
Tel: 561.393.6555 Fax: 561.395.0007
Web: www.rlcarchitects.com

COPYRIGHT RLC ARCHITECTS, P.A., 2021
ALL RIGHTS RESERVED. NO PART OF THIS DRAWING OR ANY INFORMATION CONTAINED HEREIN MAY BE REPRODUCED OR TRANSMITTED IN ANY FORM OR BY ANY MEANS, ELECTRONIC OR MECHANICAL, INCLUDING PHOTOCOPYING, RECORDING, OR BY ANY INFORMATION STORAGE AND RETRIEVAL SYSTEM, WITHOUT THE WRITTEN PERMISSION OF RLC ARCHITECTS, P.A.

BRUCE W. RETZSCH, A.I.A.

DELRAY COMMONS RETAIL

EXTERIOR SHELL RENOVATION

5024 WEST ATLANTIC AVENUE

DELRAY BEACH, FLORIDA 33484

PEBB ENTERPRISES / TOPVALCO, INC.

REVISIONS

Drawing Title

WALL SECTIONS

Scale

Project No. 20121.00

Date 09.01.2021

Principal: JCC

Project Director: MB

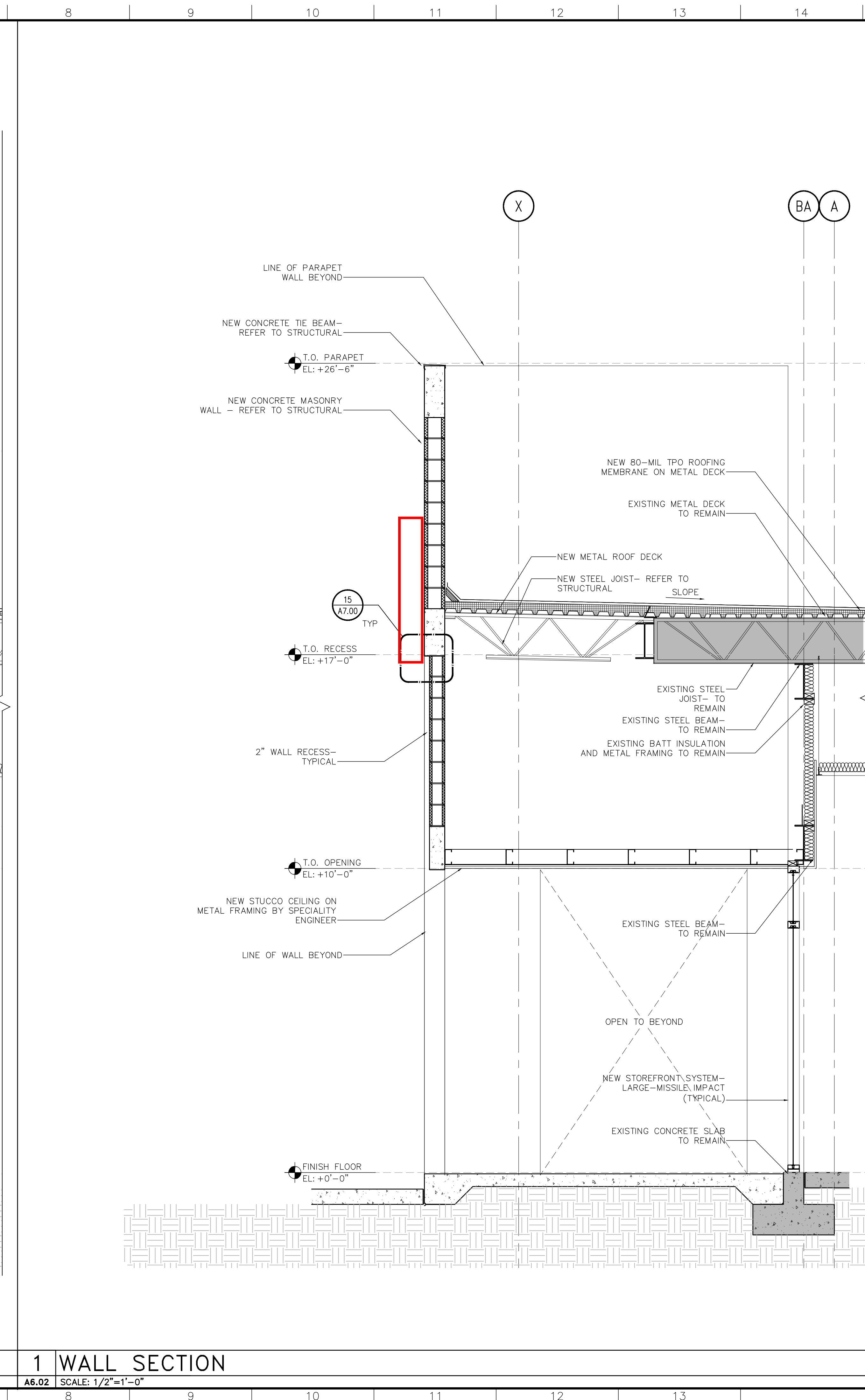
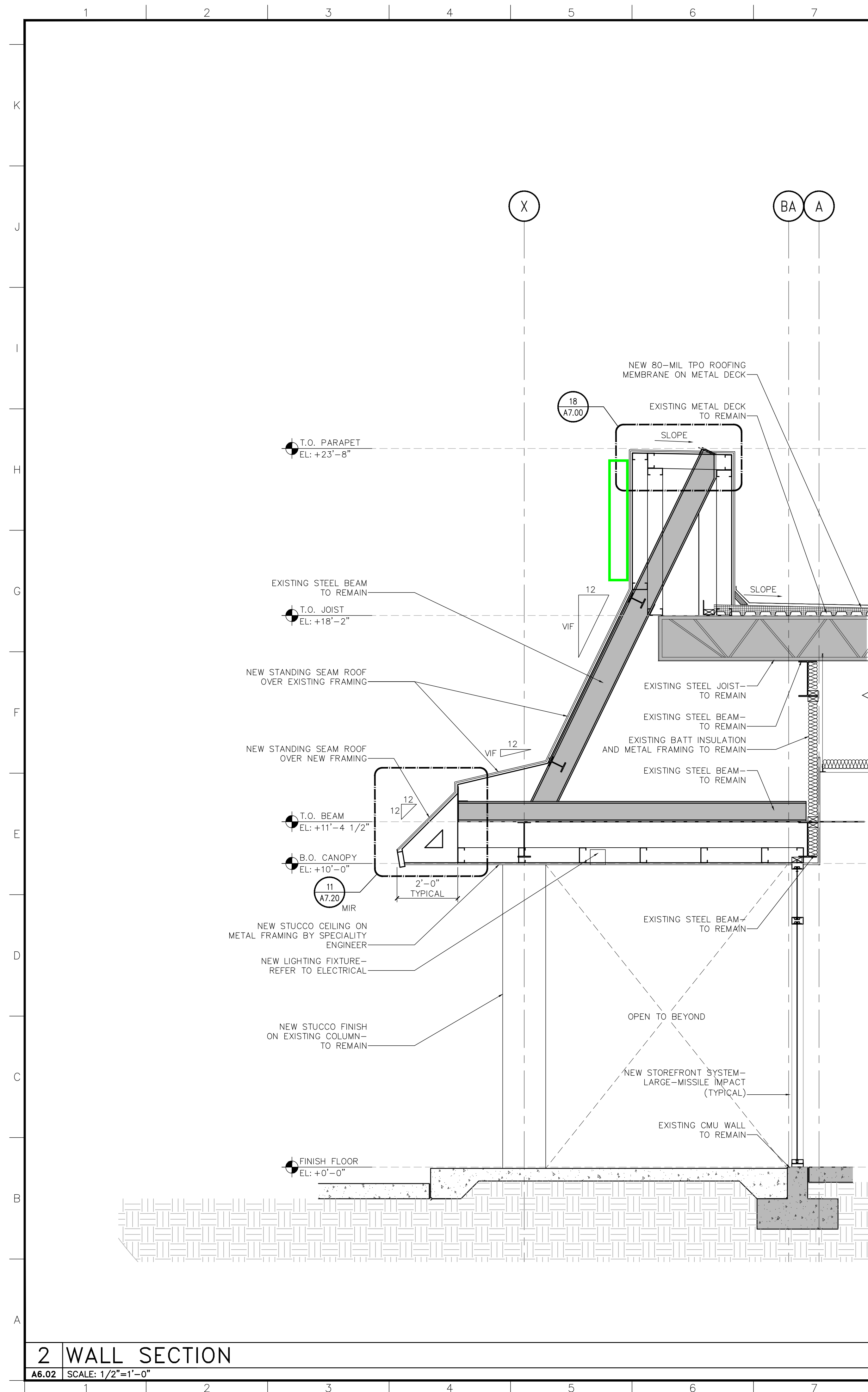
Project Manager: BRE

Drafted by: JAB

Checked by: JCC

Sheet No.

A6.01



GENERAL WALL SECTION NOTES:

1. ELEVATION TARGET SYMBOLS ARE TO TOP OF SLAB, AND OTHER ELEMENTS AS INDICATED.
2. REFER TO STRUCTURAL DRAWINGS FOR INFORMATION RELATED TO FOUNDATION, BUILDING STRUCTURE, AND LAYOUT OF SUCH.
3. REFER TO GRAPHIC SYMBOLS LEGEND FOR TYPICAL AND CONVENTIONAL MATERIAL DELINEATION; THESE MATERIALS MAY NOT BE NOTED.
4. EXCEPT FOR SPECIAL CONDITIONS THAT VARY FROM THE TYPICAL, REFER TO THE MANUFACTURER SPECIFICATIONS FOR INFORMATION RELATED TO MATERIAL ATTACHMENTS, ANCHORAGE, REFERENCE STANDARDS, AND OTHER RELEVANT INSTALLATION INFORMATION.
5. REFER TO THE EXTERIOR ELEVATIONS AND FLOOR PLANS FOR LOUVER, DOOR, AND WINDOW SYMBOLS, AND THE REFERENCED MATERIAL INFORMATION.
6. REFER TO PARTITION TYPE SCHEDULE FOR INTERIOR PARTITION CONSTRUCTION AND RELATED NOTES.

FLASHING / WATERPROOFING NOTES:

MEMBRANE WATERPROOFING SHALL BE PROVIDED AT THE FOLLOWING LOCATIONS:

1. CONTROL JOINTS IN CMU OR CONCRETE BACKUP
2. JOINTS WHERE CMU OR CONCRETE BACKUP ABUTS A DISSIMILAR MATERIAL
3. STEEL ELEMENTS EXPOSED IN WALL CAVITIES
4. WINDOW JAMBS (RE: GENERAL WINDOW NOTES)
5. METAL PANEL COLUMN ENCLOSURES
6. OTHER LOCATIONS AS INDICATED ON DWGS.
7. MEMBRANE TO LAP OVER VENEER / CLADDING SUBSTRATE MIN. 12"

RLC Architects
14 SE 4th Street, Boca Raton, FL 33432
Tel 561 393 6555 Fax 561 395 0007
Web www.rlcarchitects.com

COPYRIGHT RLC ARCHITECTS, P.A., 2021
STATE OF FLORIDA REGISTERED ARCHITECTS No. AA266001060

THE DRAWINGS AND ALL THE IDEAS, ARRANGEMENTS, DESIGNS AND PLANS
INDICATED THEREON OR REPRESENTED THEREBY ARE OWNED BY AND
ARE THE PROPERTY OF RLC ARCHITECTS, P.A. NO PART OF THE DRAWINGS
SHALL BE UTILIZED BY ANY PERSON OR FIRM OR CORPORATION FOR ANY
PURPOSE WHATSOEVER EXCEPT WITH THE SPECIFIC WRITTEN PERMISSION OF
RLC ARCHITECTS, P.A.

BRUCE W. RETZSCH, A.I.A.

DELRAY COMMONS RETAIL
EXTERIOR SHELL RENOVATION
5024 WEST ATLANTIC AVENUE
DELRAY BEACH, FLORIDA 33484
PEBB ENTERPRISES / TOPVALCO, INC.

WALL SECTIONS

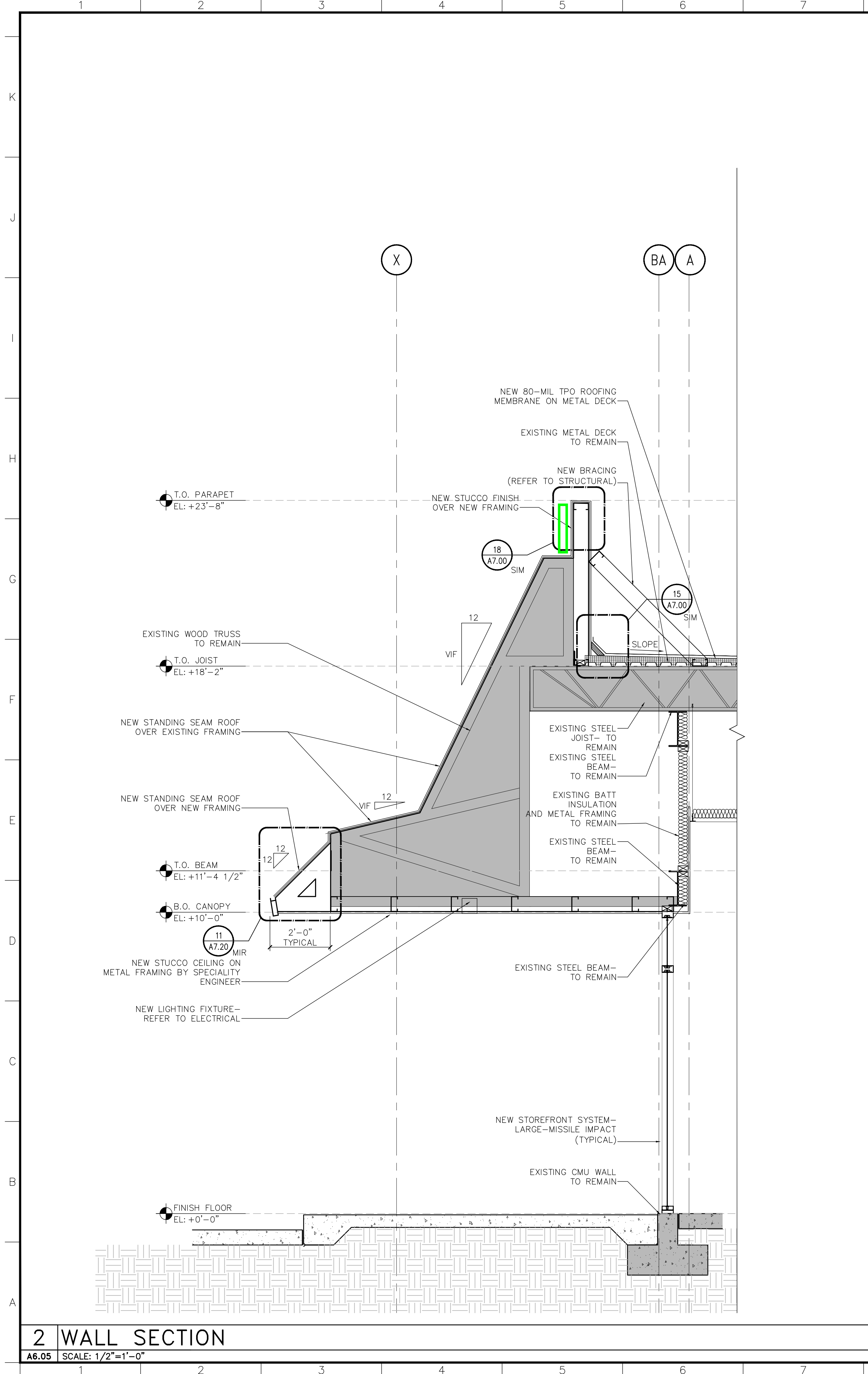
scale	
project No.	20121.00
date	09.01.2021

Principal:	JCC
Project Director:	MB
Project Manager:	BRE
Drafted by:	JAB
Checked by:	JCC

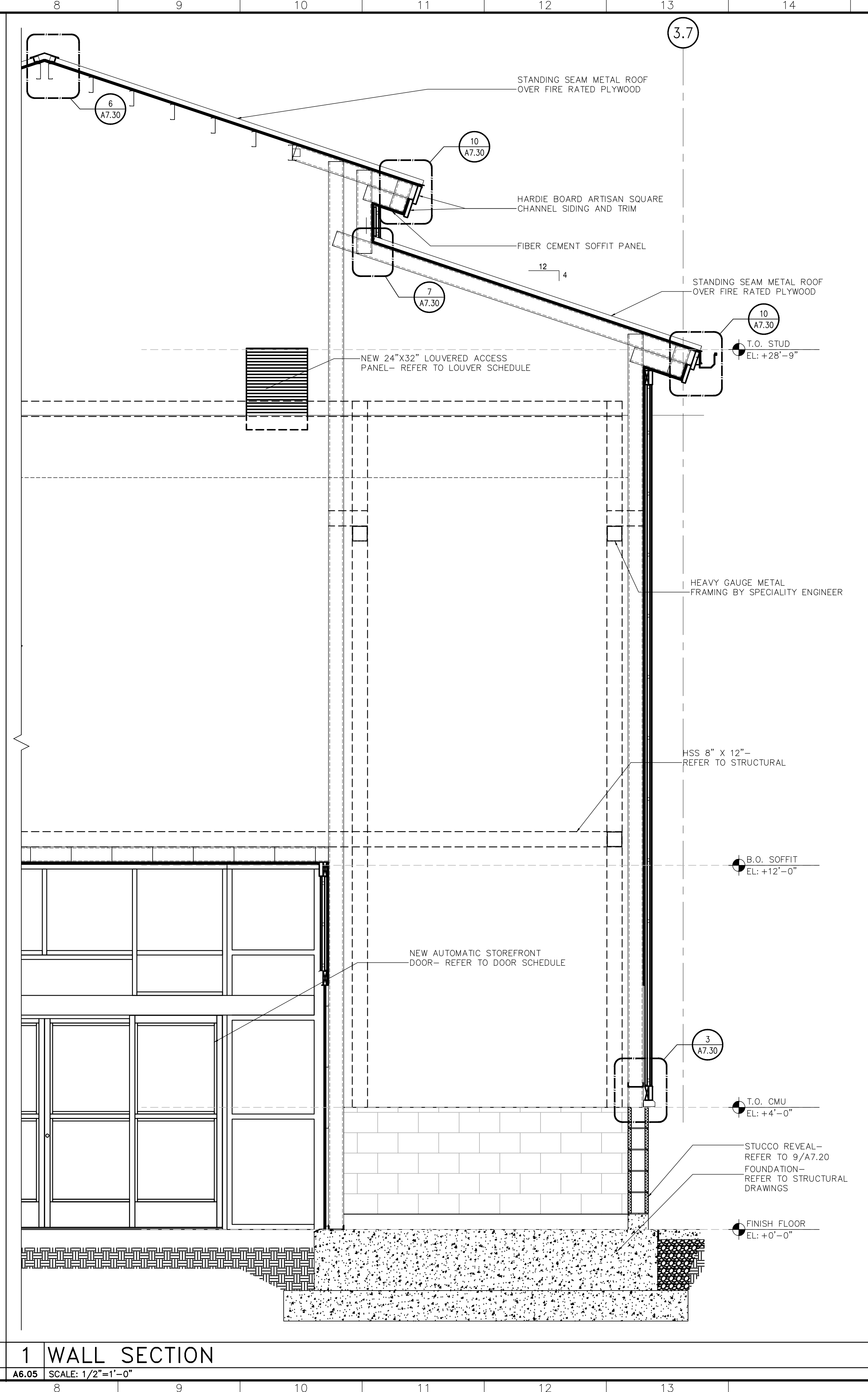
Sheet No.

A6.02

ISSUE FOR
PERMIT
09/01/2021



2 WALL SECTION
A6.05 SCALE: 1/2"=1'-0"



1 WALL SECTION
A6.05 SCALE: 1/2"=1'-0"

GENERAL WALL SECTION NOTES:

1. ELEVATION TARGET SYMBOLS ARE TO TOP OF SLAB, AND OTHER ELEMENTS AS INDICATED.

2. REFER TO STRUCTURAL DRAWINGS FOR INFORMATION RELATED TO FOUNDATION, BUILDING STRUCTURE, AND LAYOUT OF SUCH.

3. REFER TO GRAPHIC SYMBOLS LEGEND FOR TYPICAL AND CONVENTIONAL MATERIAL DELINEATION. THESE MATERIALS MAY NOT BE NOTED.

4. EXCEPT FOR SPECIAL CONDITIONS THAT VARY FROM THE TYPICAL, REFER TO THE MANUFACTURER SPECIFICATIONS FOR INFORMATION RELATED TO MATERIAL ATTACHMENTS, ANCHORAGE, REFERENCE STANDARDS, AND OTHER RELEVANT INSTALLATION INFORMATION.

5. REFER TO THE EXTERIOR ELEVATIONS AND FLOOR PLANS FOR LOUVER, DOOR, AND WINDOW SYMBOLS, AND THE REFERENCED MATERIAL INFORMATION.

6. REFER TO PARTITION TYPE SCHEDULE FOR INTERIOR PARTITION CONSTRUCTION AND RELATED NOTES.

FLASHING / WATERPROOFING NOTES:

MEMBRANE WATERPROOFING SHALL BE PROVIDED AT THE FOLLOWING LOCATIONS:

1. CONTROL JOINTS IN CMU OR CONCRETE BACKUP

2. JOINTS WHERE CMU OR CONCRETE BACKUP ABUTTS A DISSIMILAR MATERIAL

3. STEEL ELEMENTS EXPOSED IN WALL CAVITIES

4. WINDOW JAMBS (RE: GENERAL WINDOW NOTES)

5. METAL PANEL COLUMN ENCLOSURES

6. OTHER LOCATIONS AS INDICATED ON DWGS.

7. MEMBRANE TO LAP OVER VENEER / CLADDING SUBSTRATE MIN. 12"

ISSUE FOR PERMIT
09/01/2021

RLC Architects
14501 N. Shoreline Blvd., Suite 100, Boca Raton, FL 33432
Tel: 561.393.6555 Fax: 561.395.0007
www.rlcarchitects.com

COPYRIGHT RLC ARCHITECTS, P.A. © 2021
ALL RIGHTS RESERVED. NO PART OF THIS DRAWING OR ANY INFORMATION CONTAINED HEREIN MAY BE REPRODUCED OR TRANSMITTED IN ANY FORM OR BY ANY MEANS, ELECTRONIC OR MECHANICAL, WITHOUT PERMISSION IN WRITING FROM RLC ARCHITECTS, P.A.

BRUCE W. RETZSCH, AIA

DELRAY COMMONS RETAIL
EXTERIOR SHELL RENOVATION
5024 WEST ATLANTIC AVENUE
DELRAY BEACH, FLORIDA 33484
PEBB ENTERPRISES / TOPVALCO, INC.

REVISIONS

Drawing Title
WALL SECTIONS

Scale
Project No. 20121.00
Date 09.01.2021

Principal: JCC
Project Director: MB
Project Manager: BRE
Drafted by: JAB
Checked by: JCC

Sheet No.
A6.05