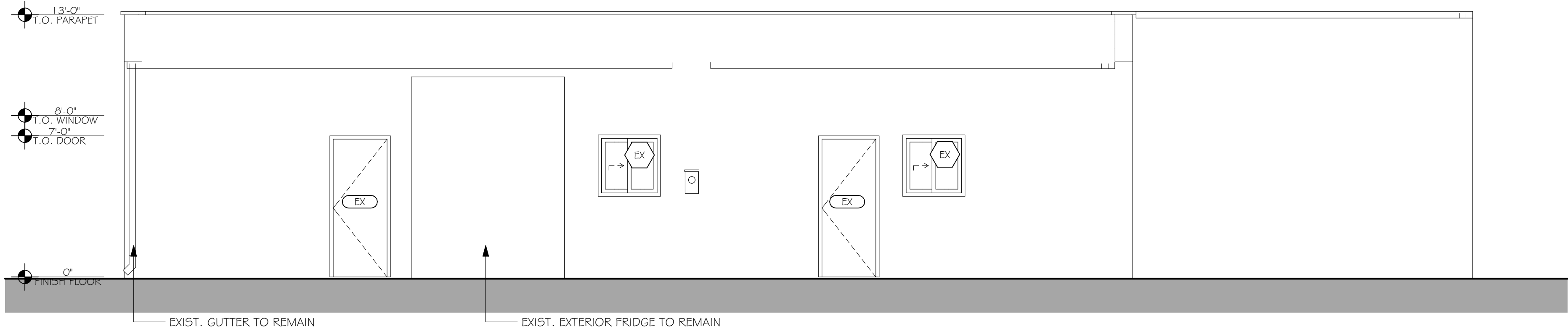


Volumes/SSA Projects/Active Projects/22-458 301 NE 3rd Ave, Delray Beach, FL 33444 (Charles Monticello)/22-458 301 NE 3rd Ave, Delray Beach, FL 33444.pln



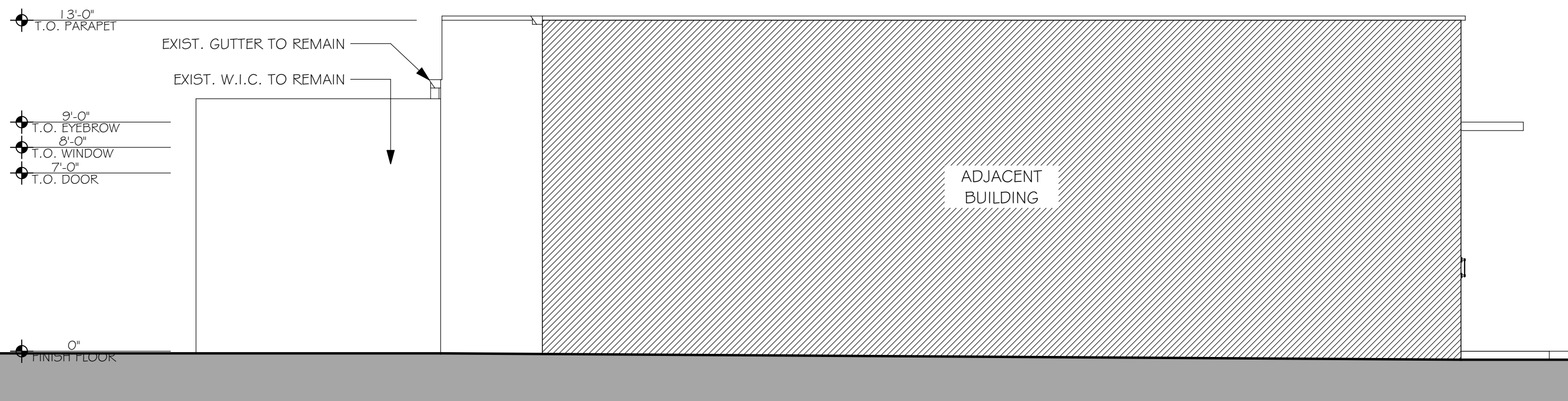
WEST ELEVATION

SCALE: 1/4" = 1'-0"



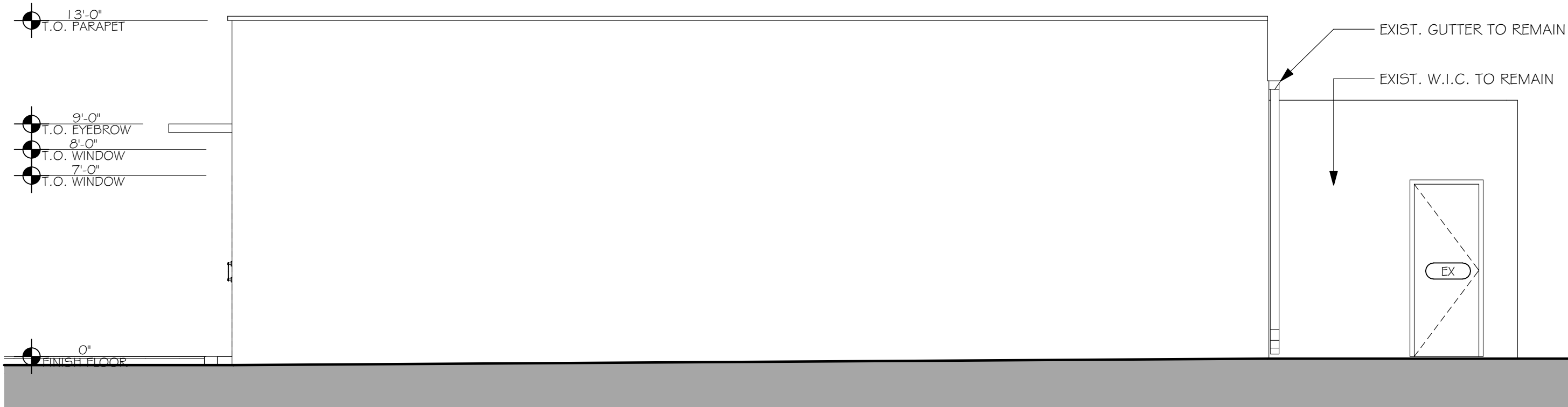
EAST ELEVATION

SCALE: 1/4" = 1'-0"



NORTH ELEVATION

SCALE: 1/4" = 1'-0"



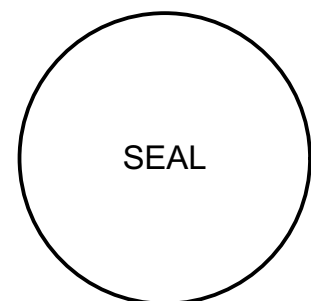
SOUTH ELEVATION

SCALE: 1/4" = 1'-0"



STEVE SIEBERT  
ARCHITECTURE

1010 GATEWAY BLVD, SUITE 103  
BOYNTON BEACH, FL 33426  
PH. 561.880.7544  
Steve@stevesiebert.com  
www.stevesiebert.com



STEVEN W. SIEBERT  
FLORIDA AR0017834  
NEW JERSEY 21A101517500  
TEXAS 26934

3RD & 3RD  
301 NE 3RD AVE  
DELRAY BEACH, FL 33444

SHEMATIC DESIGN

THE WRITTEN DIMENSIONS ON THESE DRAWINGS SHALL TAKE PRECEDENCE OVER SCALED DIMENSIONS. THE CONTRACTOR SHALL VERIFY AND BE RESPONSIBLE FOR ALL DIMENSIONS AND CONDITIONS ON THE JOB, AND THIS OFFICE MUST BE NOTIFIED OF ANY VARIATION FROM THE DIMENSIONS. COPYRIGHT STEVE SIEBERT ARCHITECTURE-UNAUTHORIZED REPRODUCTION OR ANY OTHER USE OF THIS DRAWING IS PROHIBITED.

PROJECT NO: 22-458  
DATE: 09/27/22  
DRAWN BY: JC  
CHECKED BY: S.S.  
REVISIONS:  
CITY COMMENTS (12.5.22)

ELEVATIONS

A4.1